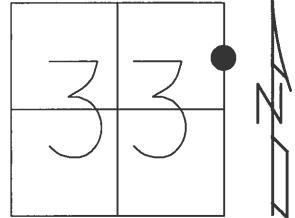


O.D.O.T. DISTRICT 2 SURVEY OFFICE (USE ONLY)

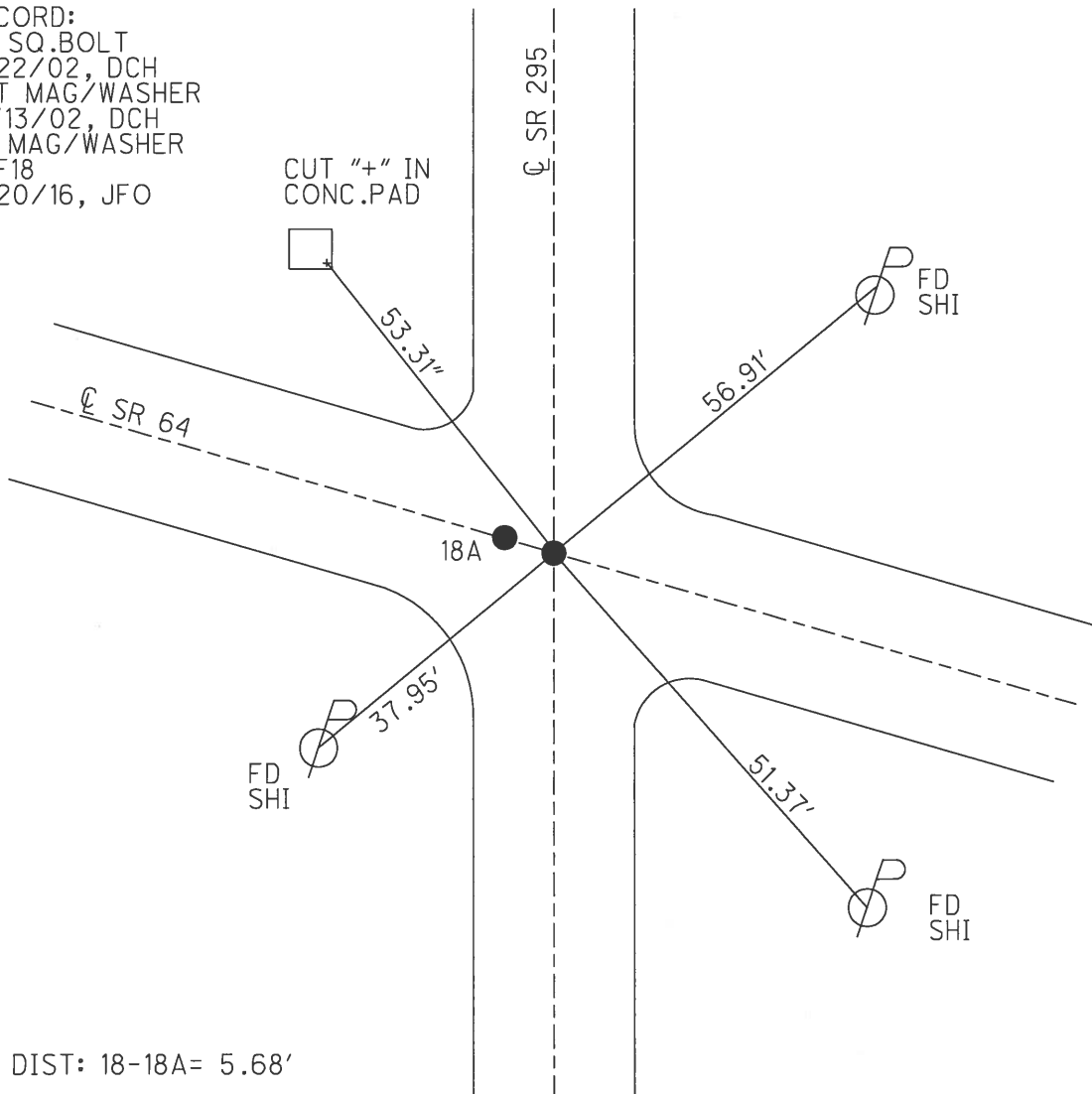
PERSONNEL _____ REFERENCE NO. 18 SHEET 20 OF 45
 NOTES HOMAN DATE 3/22/17 ROUTE SR 295
 H.C. HOMAN WEATHER SUNNY COUNTY LUCAS
 R.C. HELDMAN TEMP. 26° TOWNSHIP SWANTON
 _____ SECTION 33
 _____ T 7 N R 5 E

TYPE MONUMENT MAG/WASHER
 ON SURFACE - ~~BELOW~~ ON
 LEFT - ☉ PAV'T - RIGHT ON
11.6' TO RT EDGE PAVEMENT
 S.L.M. 469+99.53



GRID: NORTHING: 680699.543 EASTING: 1605738.594

RECORD:
 FD SQ.BOLT
 5/22/02, DCH
 SET MAG/WASHER
 12/13/02, DCH
 FD MAG/WASHER
 REF18
 6/20/16, JFO



DIST: 18-18A= 5.68'

O.D.O.T. DISTRICT 2 SURVEY OFFICE

PERSONNEL

REFERENCE NO. 41

18 ON SR 295

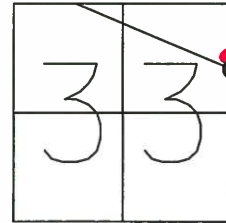
SHEET 18 OF 40

NOTES ROUSOS
 H.C. HOMAN
 R.C. MICHALAK

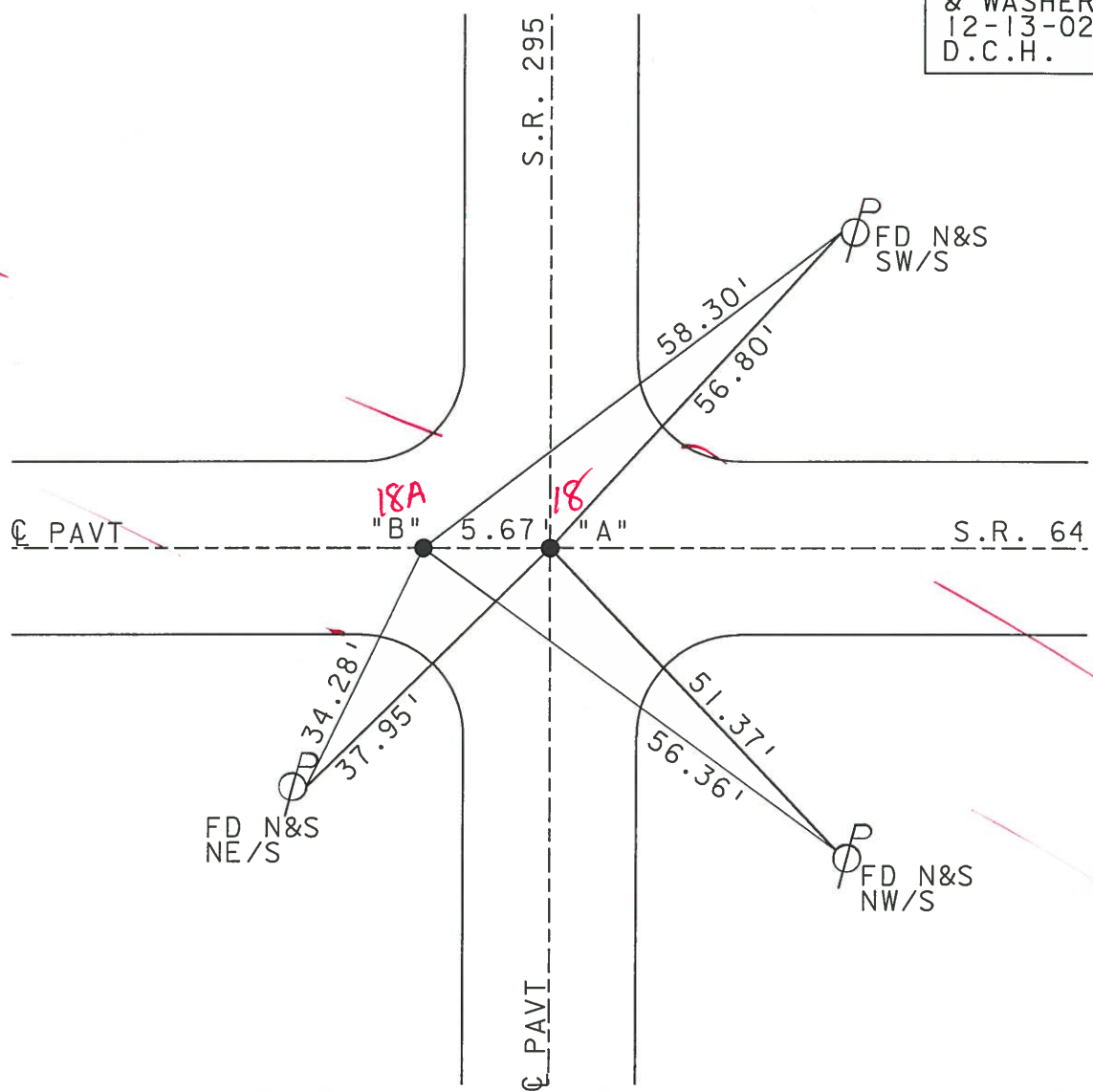
DATE 5-22-02
 WEATHER SUNNY
 TEMP. 52

ROUTE S.R. 64
 COUNTY LUCAS
 TOWNSHIP SWANTON
 SECTION 33
 T 7 N R 5 E

TYPE MONUMENT A=SQ BOLT B=RR SPIKE
 ON SURFACE - ~~BELOW~~ YES
~~LEFT - C PAVT - RIGHT~~ YES
11.6' TO RT. EDGE PAVEMENT
 S.L.M. A=336+84 B=336+90
18 18A



SET MAG NAILS
 & WASHERS
 12-13-02
 D.C.H.



O.D.O.T. DISTRICT 2 SURVEY OFFICE

PERSONNEL

REFERENCE NO. 18

SHEET 15 OF 35

NOTES LOGHRKE

H.C. CURTIS

R.C. Luce

DATE 8-7-91

WEATHER Nice

TEMP. +80

ROUTE S.R. 295

COUNTY LUCAS

TOWNSHIP WATERVILLE

SECTION _____

T7 N R 9 E

TYPE MONUMENT "A" Sm. Bolt "B" Sm. R.R. Spike

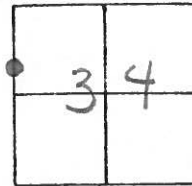
ON SURFACE - BELOW Yes

LEFT - & PAV'T. - RIGHT Yes

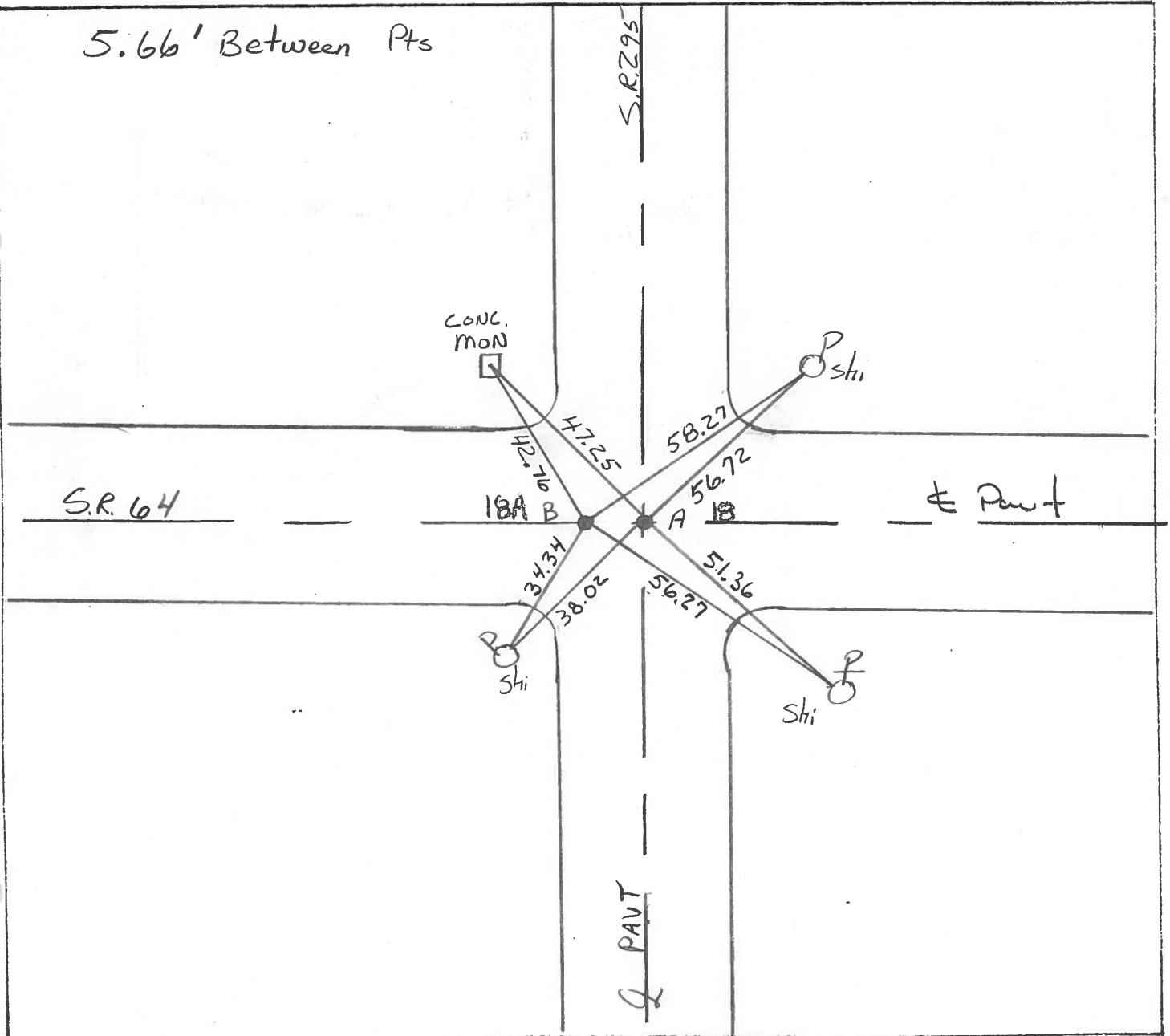
TO EDGE PAVEMENT

S.L.M. 339+64

Set P.K./WASHER



5.66' Between Pts



PERSONNEL	TITLE	PERSONNEL	TITLE
<u>Stone</u>	<u>Notes</u>		
<u>Beck</u>	<u>Flag</u>		
<u>Michalak</u>	<u>Tape</u>		
<u>Schroeder</u>	<u>Tape</u>		

COUNTY Lucas DATE 12 June 68
 S. R. #295 WEATHER Fair
 SEC. _____ TEMP. 73°

DESCRIPTION References to Control Points JOB NO. _____
 LEFT CENTER LINE RIGHT

