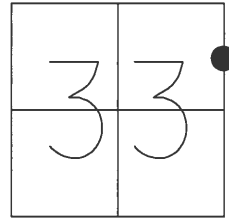


O.D.O.T. DISTRICT 2 SURVEY OFFICE (USE ONLY)

PERSONNEL _____ REFERENCE NO. 18 A SHEET 21 OF 45

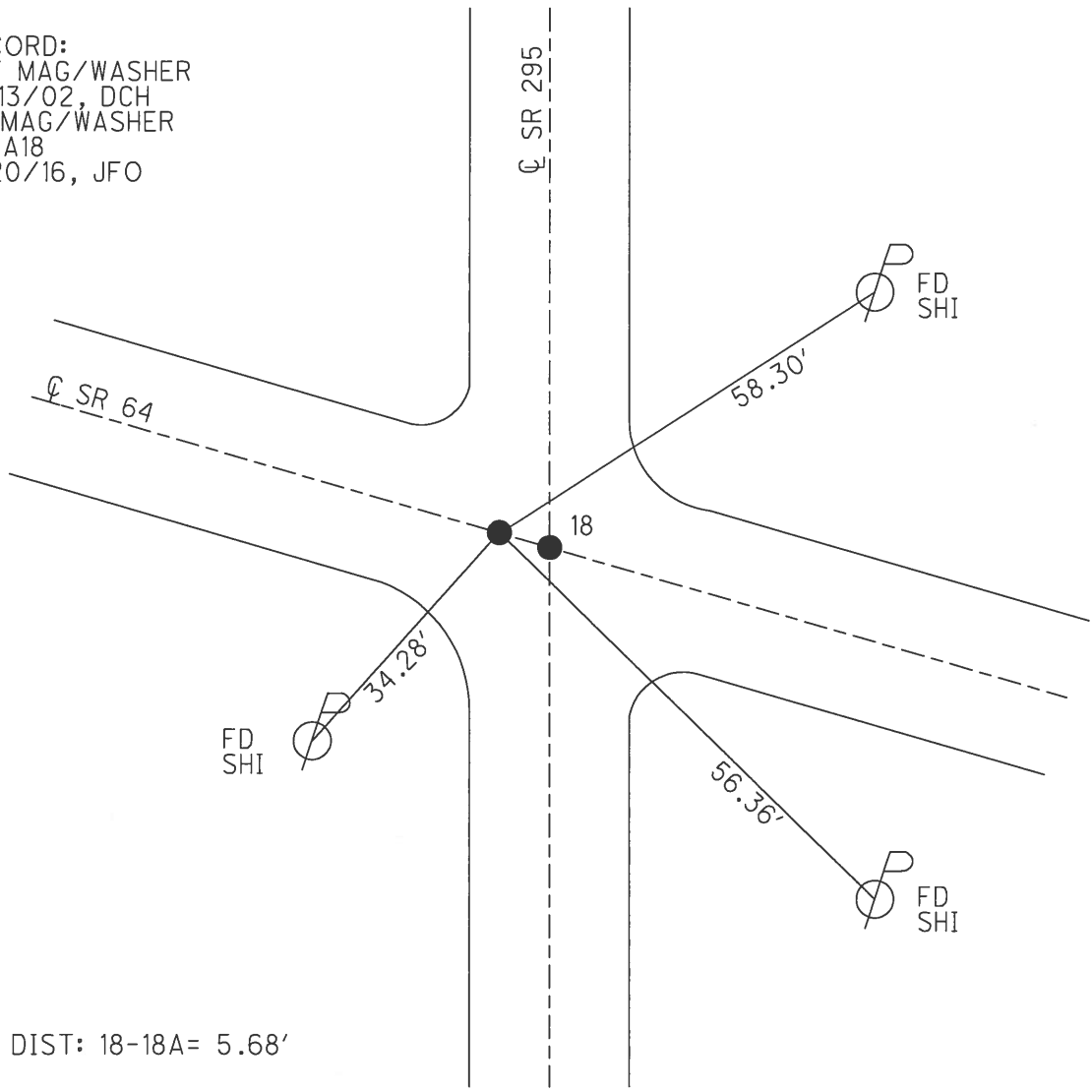
NOTES _____ DATE 5/22/02 ROUTE SR 295
 H.C. HOMAN WEATHER SUNNY COUNTY LUCAS
 R.C. MICHALAK TEMP. 52° TOWNSHIP SWANTON
 _____ SECTION 33
 _____ T 7 N R 5 E

TYPE MONUMENT _____ RR SPIKE
 ON SURFACE - ~~BELOW~~ _____ ON _____
 LEFT - ☉ PAV'T - ~~RIGHT~~ 5.67'
11.6' TO RT EDGE PAVEMENT
 S.L.M. 336+90



GRID: NORTHING: 680701.188 EASTING: 1605733.149

RECORD:
 SET MAG/WASHER
 12/13/02, DCH
 FD MAG/WASHER
 REFA18
 6/20/16, JFO



DIST: 18-18A= 5.68'

O.D.O.T. DISTRICT 2 SURVEY OFFICE

PERSONNEL

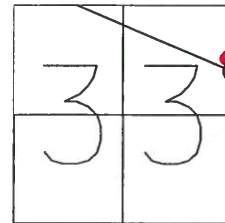
NOTES ROUSOS
 H.C. HOMAN
 R.C. MICHALAK

REFERENCE NO. 4118A
 DATE 5-22-02
 WEATHER SUNNY
 TEMP. 52

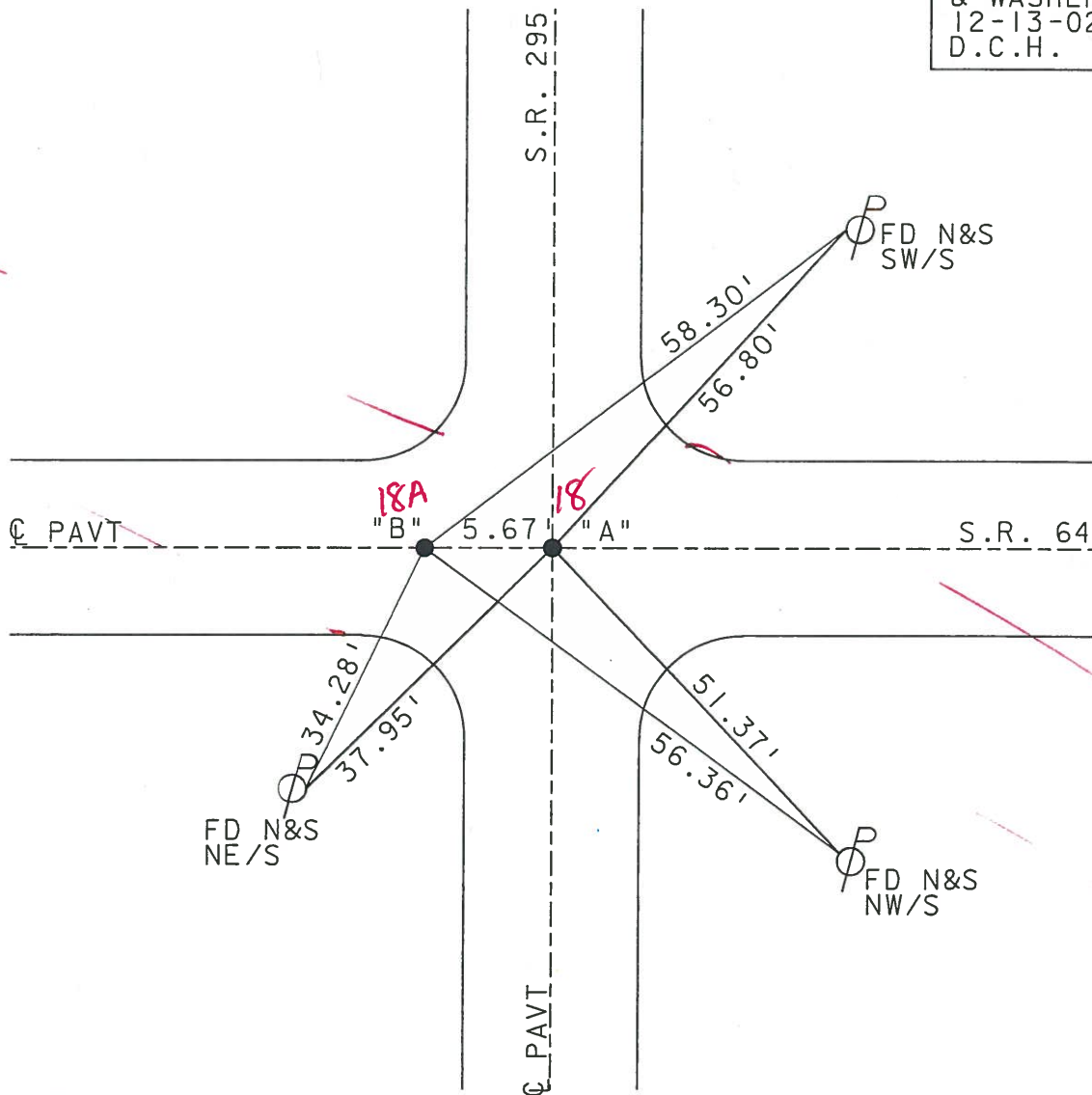
18 on SR 295
 SHEET 18 OF 40
 ROUTE S.R. 64
 COUNTY LUCAS
 TOWNSHIP SWANTON
 SECTION 33
T 7 N R 5 E

TYPE MONUMENT A=SQ BOLT B=RR SPIKE
 ON SURFACE - ~~BELOW~~ YES
~~LEFT - C PAVT - RIGHT~~ YES
11.6' TO RT. EDGE PAVEMENT
 S.L.M. A=336+84 B=336+90

18 18A



SET MAG NAILS
 & WASHERS
 12-13-02
 D.C.H.



O.D.O.T. DISTRICT 2 SURVEY OFFICE

PERSONNEL _____

REFERENCE NO. 18

SHEET 15 OF 35

NOTES LOSHRKE

H.C. CURTIS

R.C. Luce

DATE 8-7-91

WEATHER Nice

TEMP. +80

ROUTE S.R. 295

COUNTY LUCAS

TOWNSHIP WATERVILLE

SECTION _____

T 7 N R 9 E

TYPE MONUMENT "A" Sq. Bolt "B" Sm. R.R. Spike

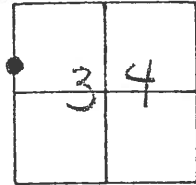
ON SURFACE - BELOW Yes

LEFT - & PAV'T. - RIGHT Yes

TO EDGE PAVEMENT

S.L.M. 339+64

Set P.K. / WASHER



5.66' Between Pts

