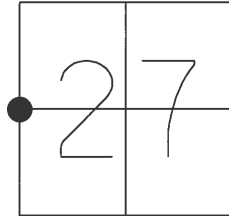


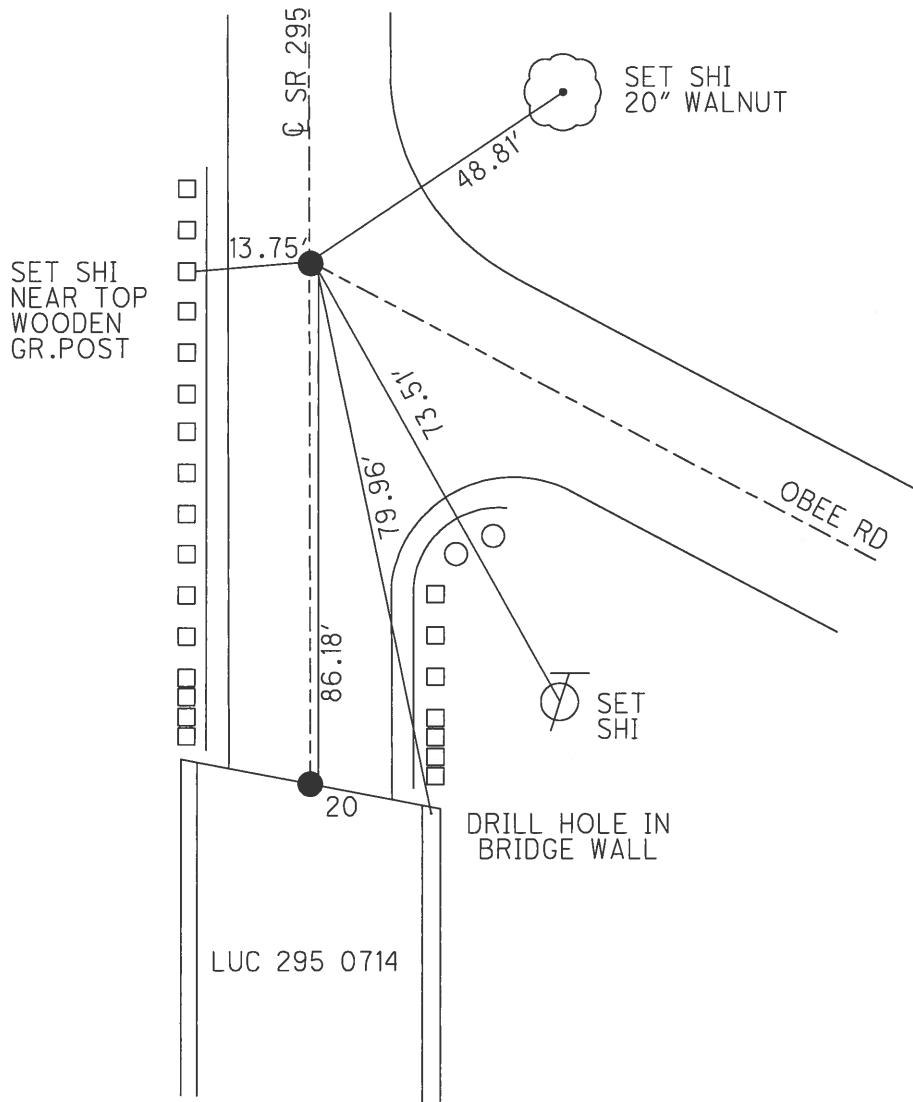
O.D.O.T. DISTRICT 2 SURVEY OFFICE (USE ONLY)

PERSONNEL	REFERENCE NO.	20 A	SHEET	24	OF	45
NOTES	LOEHRKE	DATE	8/6/91	ROUTE	SR 295	
H.C.	CURTIS	WEATHER	CLOUDY	COUNTY	LUCAS	
R.C.	LUCE	TEMP.	75°	TOWNSHIP	SWANTON	
				SECTION	27	
				T	7	N
				R	9	E

TYPE MONUMENT SQ HEADED SPIKE  
 ON SURFACE - ~~BELOW~~ ON  
 LEFT - ☉ PAV'T - ~~RIGHT~~ 1.0'  
7.9' TO LT EDGE PAVEMENT  
 S.L.M. 379+53  
 GRID: NORTHING: \_\_\_\_\_ EASTING: \_\_\_\_\_



RECORD:  
 SET P.K.NAILS  
 3/14/92  
 DNF  
 8/20/01, BC  
 NEEDS TO BE RESET  
 11/25/02, DCH  
 D.N.F.  
 TIES ARE NOT GOOD  
 AND ALL RECORD  
 6/21/19, JFO



LUC 295 0714

O.D.O.T. DISTRICT 2 SURVEY OFFICE

PERSONNEL

REFERENCE NO. 20 A

SHEET 24 OF 45

NOTES LOEHRKE

DATE 8/6/91

ROUTE SR 295

H.C. CURTIS

WEATHER CLOUDY

COUNTY LUCAS

R.C. LUCE

TEMP. 75°

TOWNSHIP SWANTON

SECTION 27

T 7 N R 9 E

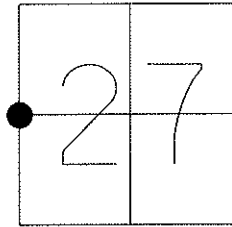
TYPE MONUMENT SQ. HEADED SPIKE

ON SURFACE - ~~BELOW~~ ON

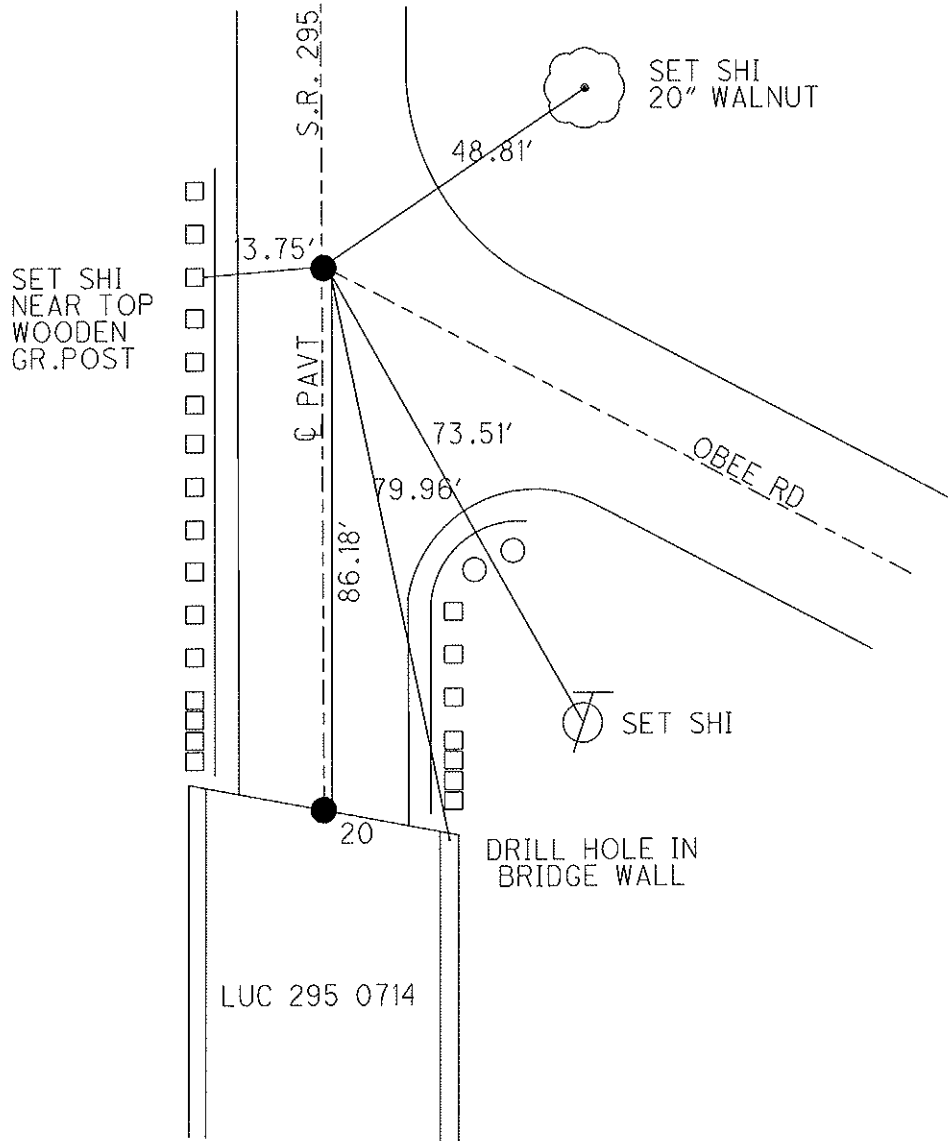
LEFT - Q PAV'T - ~~RIGHT~~ 1.0'

7.9' TO LT EDGE PAVEMENT

S.L.M. 379+53



NOTE:  
SET P.K. NAILS  
3/14/92  
DNF, BC 8/20/01  
NEEDS TO BE RESET  
DCH, 11/25/02



# O.D.O.T. DISTRICT 2 SURVEY OFFICE

PERSONNEL

REFERENCE NO. 20-20A SHEET 17 OF 35

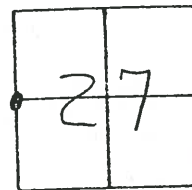
NOTES LOZHRKE  
 H.C. CURTIS  
 R.C. Luce

DATE 8-6-91  
 WEATHER Cloudy  
 TEMP. +75

ROUTE S.R. 295  
 COUNTY LUCAS  
 TOWNSHIP SWANTON  
 SECTION 27  
T 7 N R 9 E

TYPE MONUMENT Sq. HEADED Spikes  
 ON SURFACE - BELOW Yes  
 LEFT - C PAV'T. - RIGHT 1.0 Lt  
7A TO Lt EDGE PAVEMENT  
 S.L.M. 379+53 (to #20-A)

P.K Nails  
 As of  
3-24-92



DID NOT FIND  
 DIG AFTER GRINDING

7-3-02

#20-A

DNF  
8-20-01

Near Top  
 WOODEN GUARD  
 Rail Post

S.R. 295

20' WALNUT  
 Shi

Needs to be  
 reset 11-25-02  
 DIT

#20

Fd. IRON PIN IN  
 CONC. BRIDGE DECK

Fd.  
8-20-01

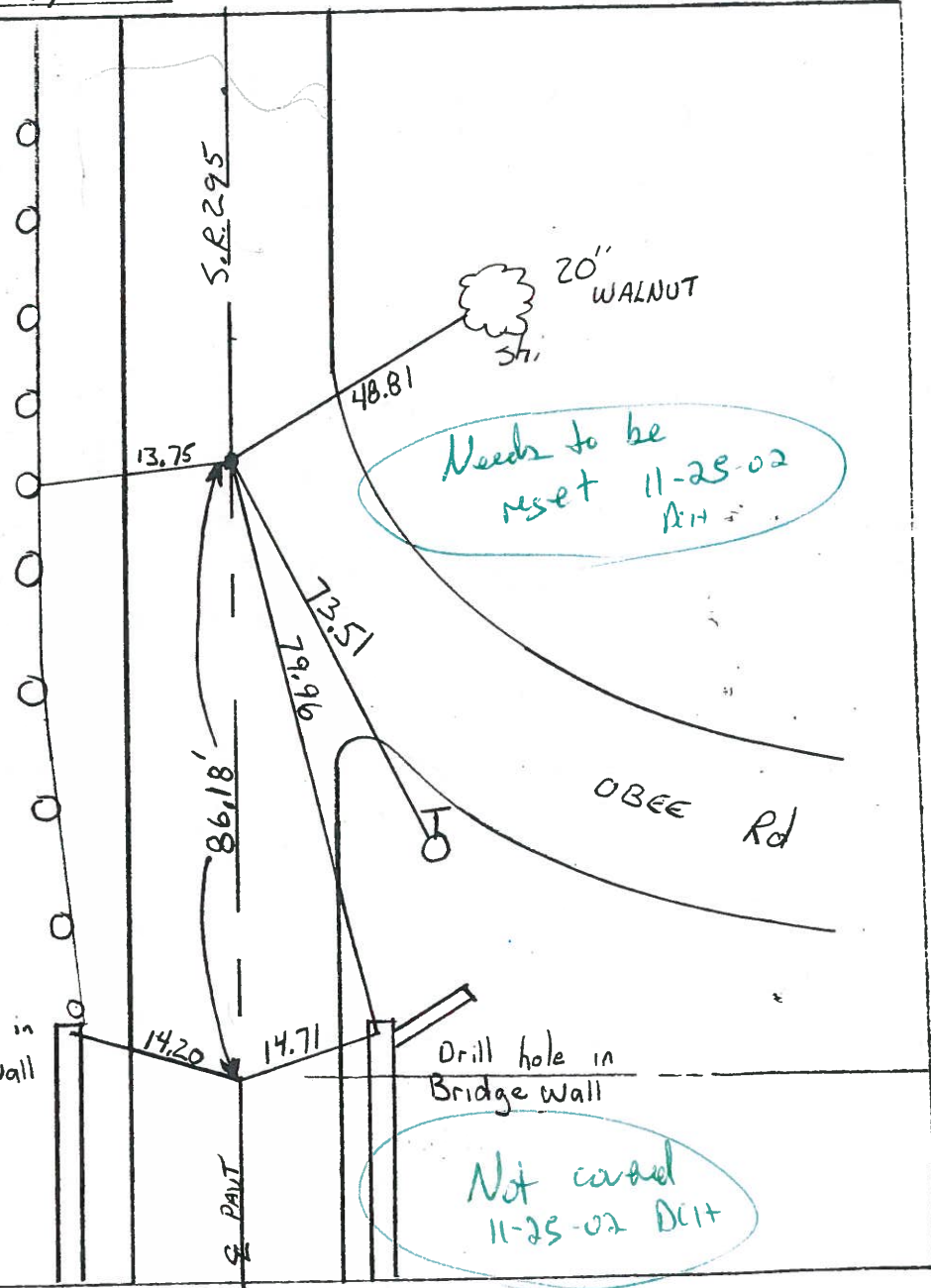
Drill hole in  
 Bridge wall

14.20

14.71

Drill hole in  
 Bridge wall

Not covered  
 11-25-02 DIT



O.D.O.T. DISTRICT 2 SURVEY OFFICE 21 of 40

PERSONNEL

REFERENCE NO. 20-20A

SHEET 17 OF 35

NOTES LOEHRKE

H.C. Curris

R.C. Luce

DATE 8-6-91

WEATHER Cloudy

TEMP. +75

ROUTE S.R. 295

COUNTY LUCAS

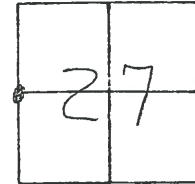
TOWNSHIP SWANTON

SECTION 27

T.7 N R. 9 E

TYPE MONUMENT Sq. HEADED Spikes  
 ON SURFACE - BELOW Yes  
 LEFT - C PAV'T. - RIGHT 1.0 Lt  
7.9 TO Lt EDGE PAVEMENT  
 S.L.M. 379+53 (to #20-A)

FK Nails  
 As of  
3-24-92



Note:  
 a) Did Not Find  
 8-20-91 B.C.  
 b) Needs to be Reset  
 11-25-92 DCH

#20-A

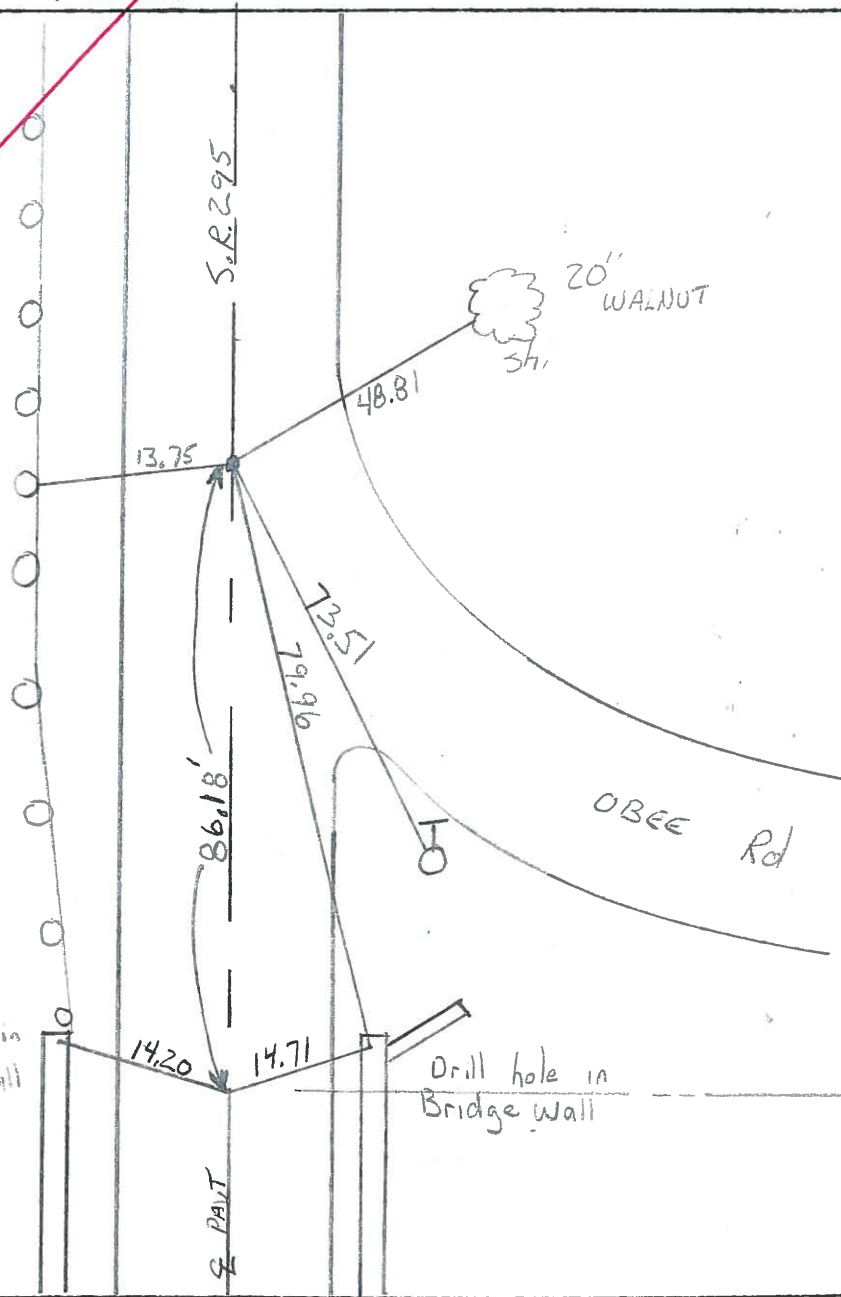
Sh  
 Near Top  
 WOODEN GUARD  
 Rail Post

#20

Fd. IRON PIN in  
 CONC. Bridge Deck

Drill hole in  
 Bridge wall

Drill hole in  
 Bridge wall



County Lucas S.R. 295

Date 26 April 82

Township Swanton

Weather Cloudy

Section 27-28

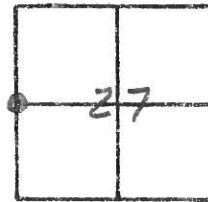
Temp. 63°

T, N, R, E

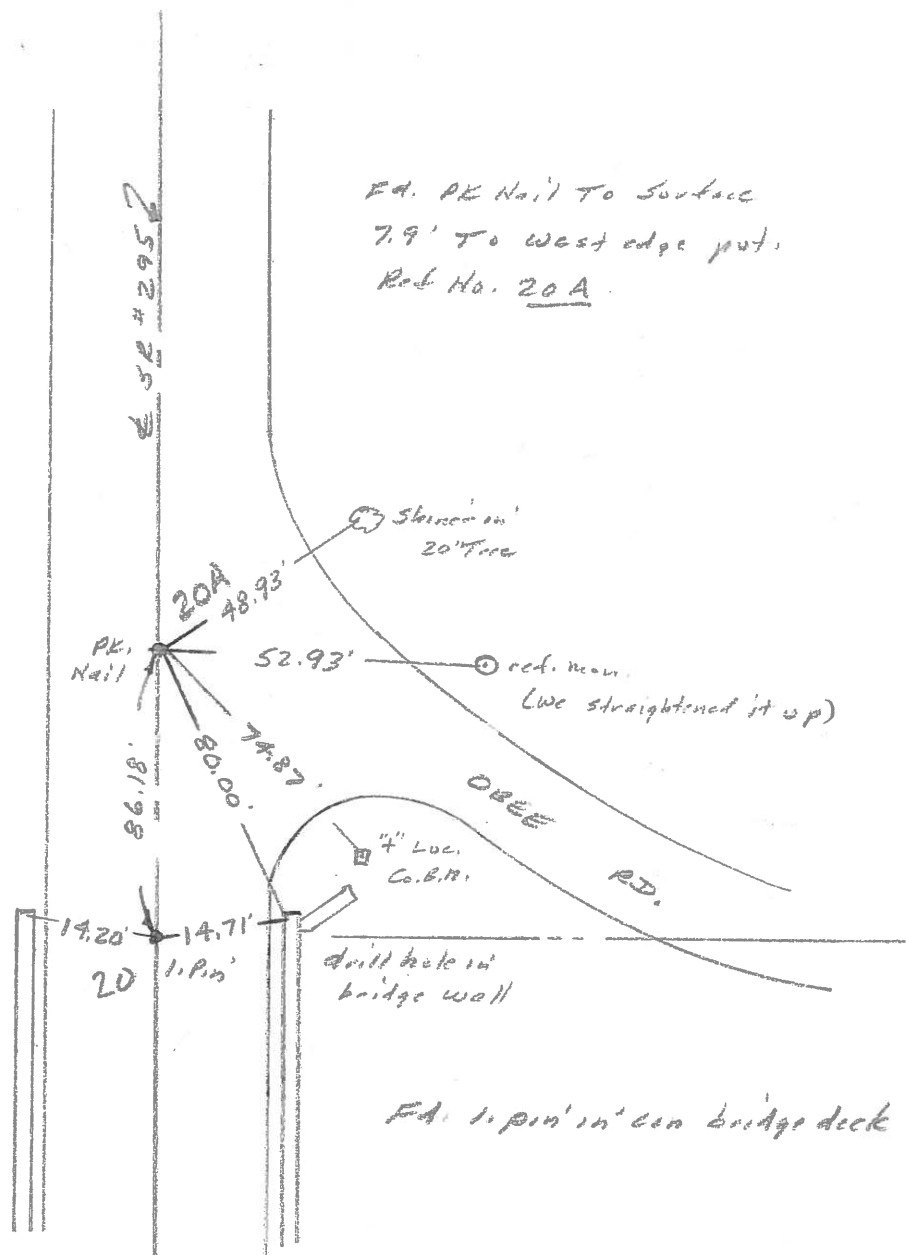
Personnel I. Stone

P. Neuse

R. Michalak



REF. NO. 20



Ed. PK Nail To Surface  
7.9' To West edge put.  
Ref No. 20 A

drill hole  
in bridge wall

drill hole in  
bridge wall

Ed. 1 pin in cen bridge deck

PERSONNEL	TITLE	PERSONNEL	TITLE	COUNTY	DATE
Stone	Notes			Lucee	12 June 68
Beak	Flag			S. R. # 295	WEATHER Fair
Michalak	Tape				
Schroder	Tape			SEC.	TEMP. 71°

DESCRIPTION References to Control Points JOB NO. \_\_\_\_\_  
 LEFT CENTER LINE RIGHT

