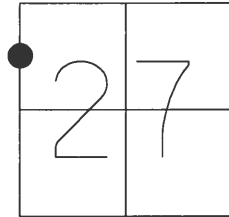


O.D.O.T. DISTRICT 2 SURVEY OFFICE (USE ONLY)

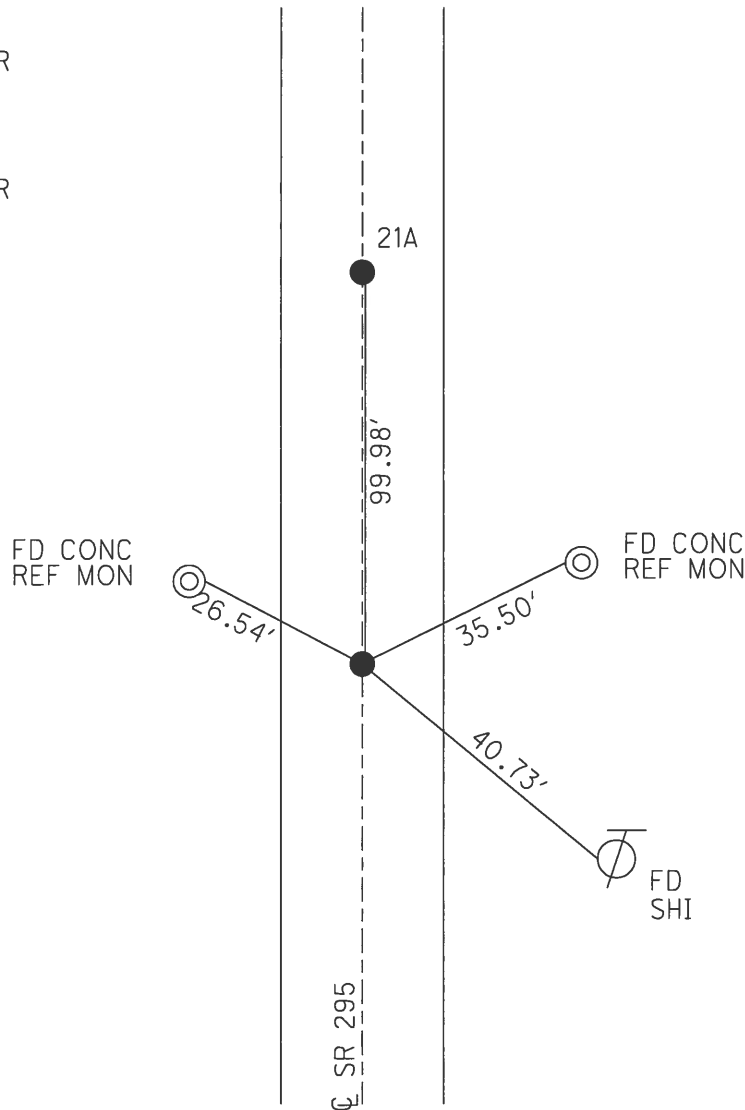
PERSONNEL _____ REFERENCE NO. 21 SHEET 25 OF 45
 NOTES BEAUMONT DATE 9/3/02 ROUTE SR 295
 H.C. HOMAN WEATHER P CLOUDY COUNTY LUCAS
 R.C. BEUMONT TEMP. 80° TOWNSHIP SWANTON
 _____ SECTION 27
 _____ T 7 N R 9 E

TYPE MONUMENT P.K. NAIL
 ON SURFACE - ~~BELOW~~ _____ ON _____
 LEFT - ☉ PAV'T - RIGHT _____ ON _____
9.8 TO LT _____ EDGE PAVEMENT
 S.L.M. 386+79



GRID: NORTHING: 685410.948 EASTING: 1605847.981

RECORD:
 SET MAG/WASHER
 11/25/02, DCH
 FD MAG NAIL
 REF21
 6/20/16, JFO
 SET MAG/WASHER
 1 1/2" DOWN
 NEWREF21
 7/27/17, JFO



O.D.O.T. DISTRICT 2 SURVEY OFFICE

PERSONNEL

REFERENCE NO. 21

SHEET 25 OF 45

NOTES BEAUMONT

DATE 9-3-02

ROUTE S.R. 295

H.C. HOMAN

WEATHER P. CLOUDY

COUNTY LUCAS

R.C. BEAUMONT

TEMP. 80°

TOWNSHIP SWANTON

SECTION 27

T 7 N R 9 E

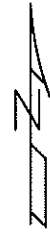
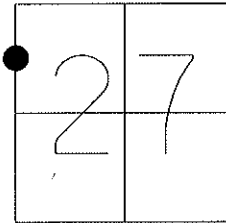
TYPE MONUMENT PK NAIL

ON SURFACE - ~~BELOW~~ ON

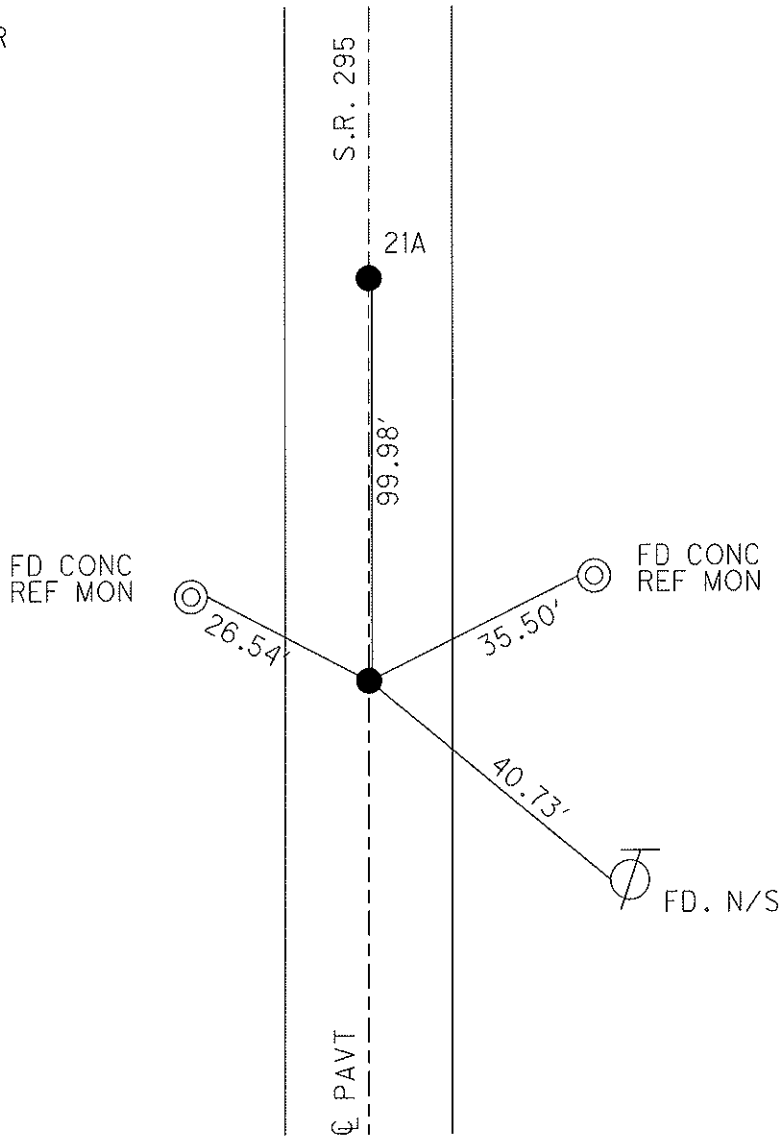
LEFT - Q PAV'T - RIGHT ON

9.8 TO LT EDGE PAVEMENT

S.L.M. 386+79



SET MAG/WASHER
DCH, 11/25/02



O.D.O.T. DISTRICT 2 SURVEY OFFICE

PERSONNEL

REFERENCE NO. 21 / ^{21A}

SHEET 22 OF 40

NOTES BEAUMONT

DATE 9-3-02

ROUTE S.R. 295

H.C. HOMAN

WEATHER P. CLOUDY

COUNTY LUCAS

R.C. BEAUMONT

TEMP. 80

TOWNSHIP SWANTON

SECTION 27

T 7 N R 9 E

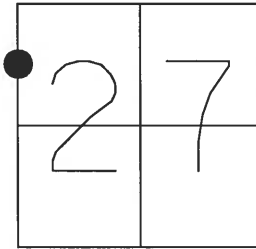
TYPE MONUMENT PK NAIL

ON SURFACE - ~~BELOW~~ YES

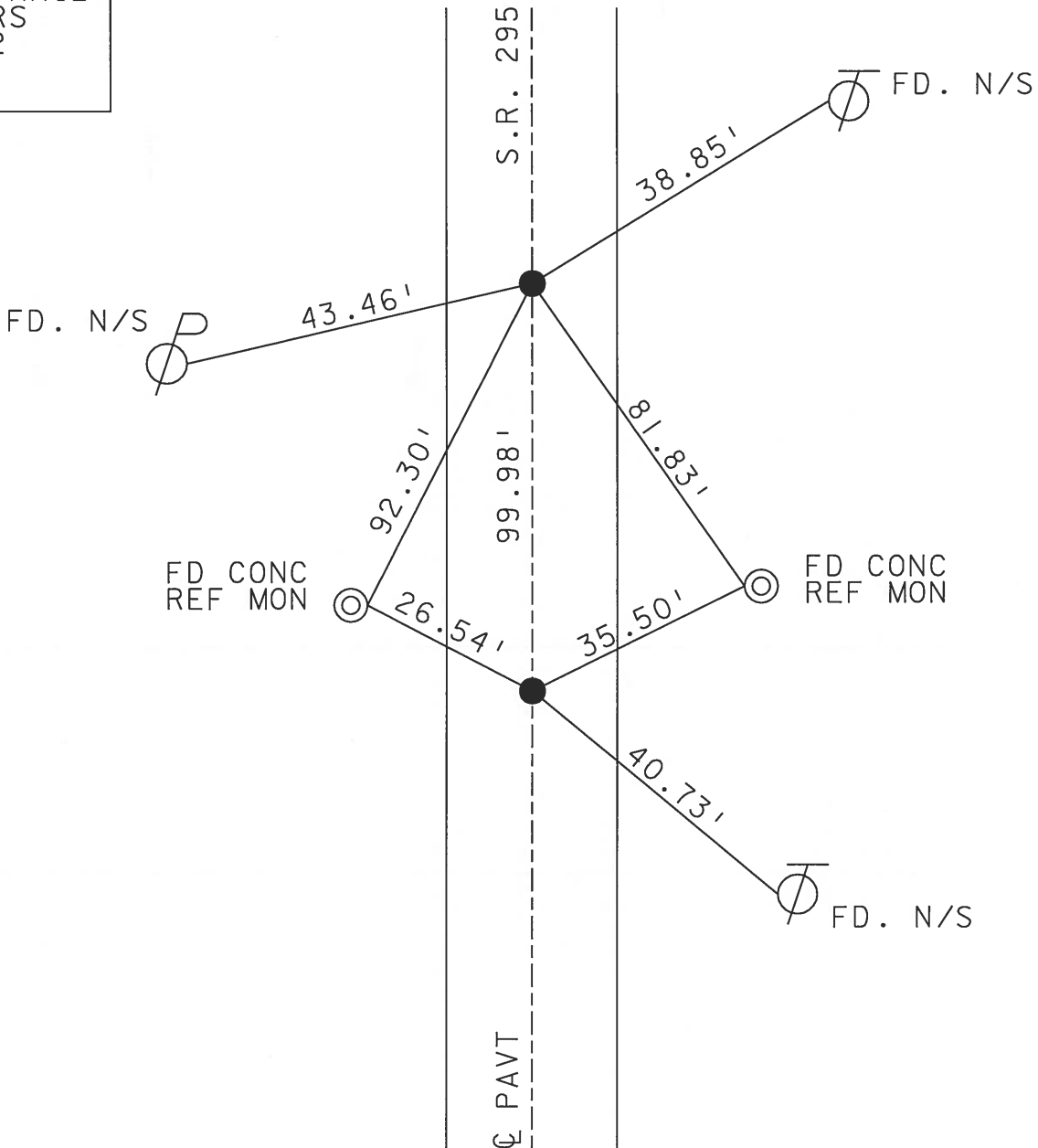
~~LEFT - C PAV'T - RIGHT~~ YES

9.8 TO LT EDGE PAVEMENT

S.L.M. 386+79



SET MAG NAIL
& WASHERS
11-25-02
D.C.H.



O.D.O.T. DISTRICT 2 SURVEY OFFICE

PERSONNEL

REFERENCE NO. 21 & 21-A

SHEET 18 OF 35

NOTES LOHRKE

H.C. CURTIS

R.C. Luce

DATE 8-6-91

WEATHER CLoudy

TEMP. +75

ROUTE S.R. 295

COUNTY LUCAS

TOWNSHIP SWANTON

SECTION 27

T 7 N R 9 E

TYPE MONUMENT RR Spike

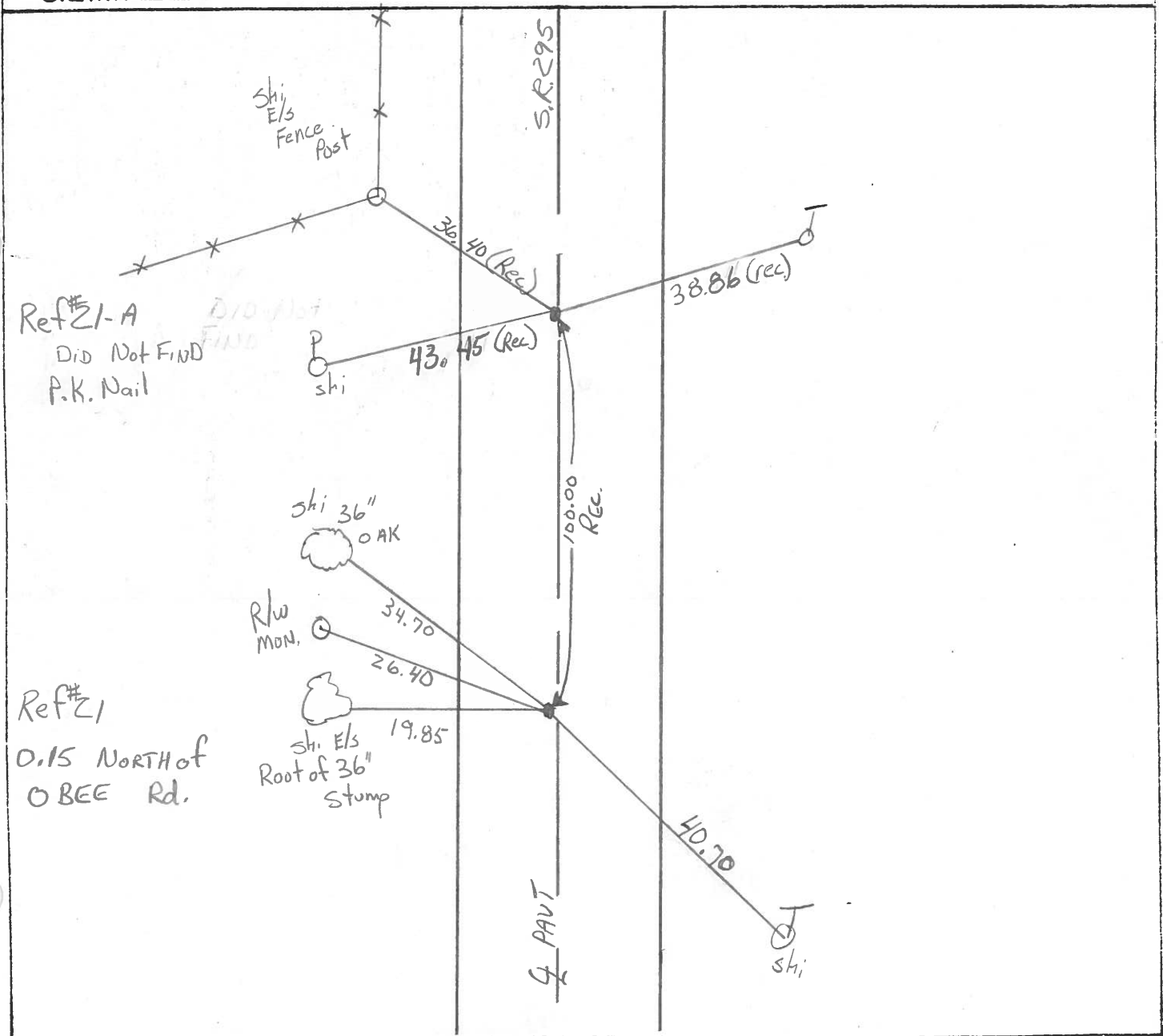
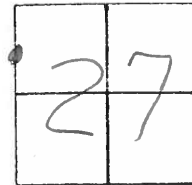
ON SURFACE - BELOW Yes

LEFT- & PAV'T. - RIGHT Yes

9.8 TO R EDGE PAVEMENT

S.L.M. 386+79

P.K. Nails
As of
3-24-92



O.D.O.T. DISTRICT 2 SURVEY OFFICE

SHEET _____ OF _____

County Lucas S.R. 295

Date 26 April 82

Township Swanston

Weather Cloudy

Section 27

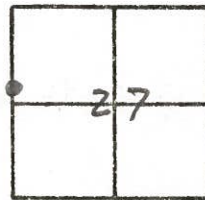
Temp. 62°

T N, R E

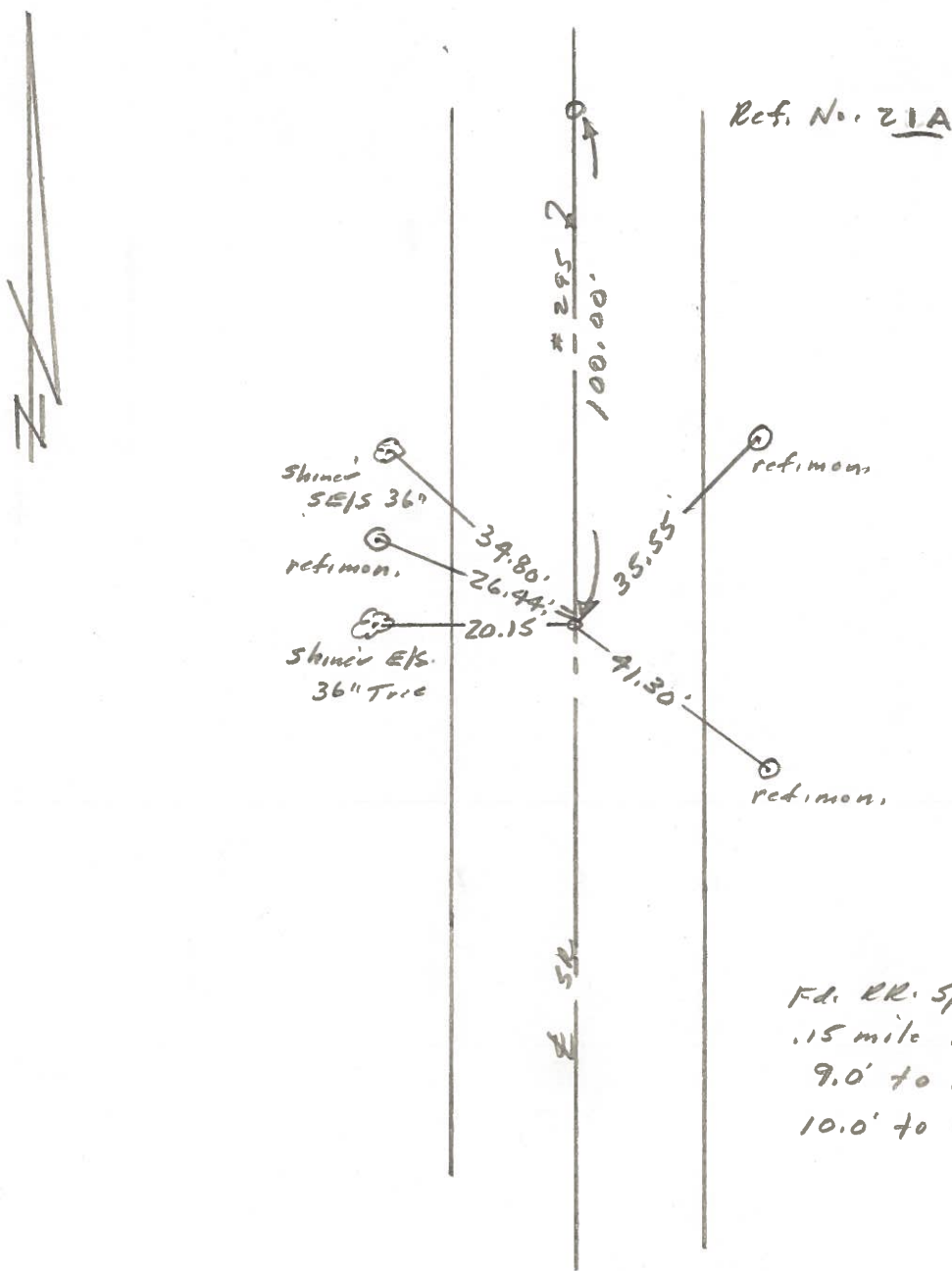
Personnel I. Stone

P. Newson

R. Michalok



REF. NO. 21



Fd. RR. Spk. To Surface
 .15 mile N. of Obcc Rd,
 9.0' to W. edge post
 10.0' to E. edge post.

| PERSONNEL | TITLE | PERSONNEL | TITLE | COUNTY | DATE |
|-----------|-------|-----------|-------|-------------|--------------|
| Stone | Notes | | | Lucas | 12 June 68 |
| Beck | Flag | | | S. R. # 295 | WEATHER Fair |
| Michalak | Tape | | | SEC. | TEMP. 71° |
| Schroder | Tape | | | | |

DESCRIPTION References to Control Points JOB NO.

