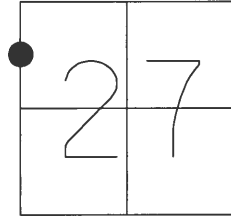


O.D.O.T. DISTRICT 2 SURVEY OFFICE (USE ONLY)

PERSONNEL \_\_\_\_\_ REFERENCE NO. 21 A SHEET 26 OF 45

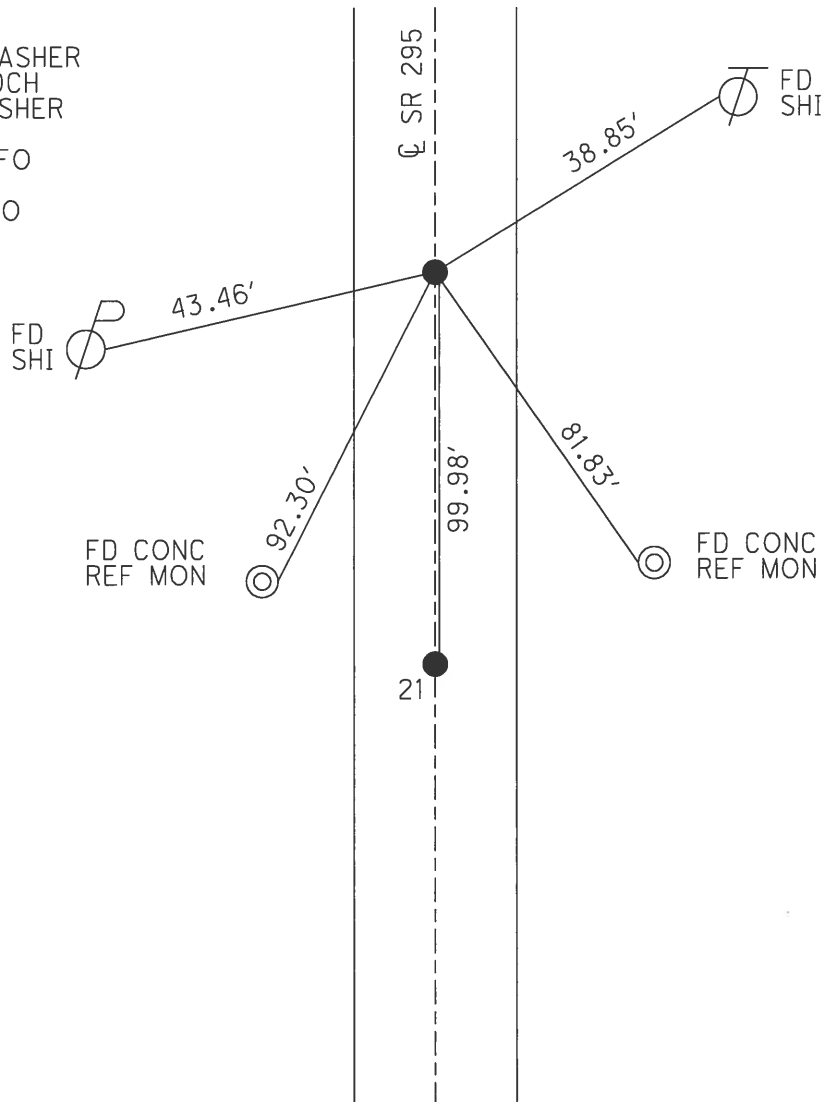
NOTES BEAUMONT DATE 9/3/02 ROUTE SR 295  
 H.C. HOMAN WEATHER P CLOUDY COUNTY LUCAS  
 R.C. BEAUMONT TEMP. 80° TOWNSHIP SWANTON  
 \_\_\_\_\_ SECTION 27  
 \_\_\_\_\_ T 7 N R 9 E

TYPE MONUMENT P.K. NAIL  
 ON SURFACE - ~~BELOW~~ \_\_\_\_\_ ON \_\_\_\_\_  
 LEFT - ☉ PAV'T - RIGHT \_\_\_\_\_ ON \_\_\_\_\_  
9.8' TO LT \_\_\_\_\_ EDGE PAVEMENT  
 S.L.M. \_\_\_\_\_ 387+79



GRID: NORTHING: 685510.961 EASTING: 1605848.321

RECORD:  
 SET MAG/WASHER  
 11/25/02, DCH  
 FD MAG/WASHER  
 REFA21  
 6/20/16, JFO  
 UNCOVERED  
 7/17/17, JFO



O.D.O.T. DISTRICT 2 SURVEY OFFICE

PERSONNEL \_\_\_\_\_

REFERENCE NO. 21 A

SHEET 26 OF 45

NOTES BEAUMONT

DATE 9-3-02

ROUTE S.R. 295

H.C. HOMAN

WEATHER P. CLOUDY

COUNTY LUCAS

R.C. BEAUMONT

TEMP. 80°

TOWNSHIP SWANTON

SECTION 27

T 7 N R 9 E

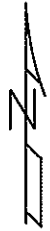
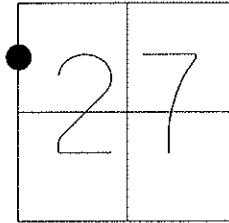
TYPE MONUMENT PK NAIL

ON SURFACE - ~~BELOW~~ ON

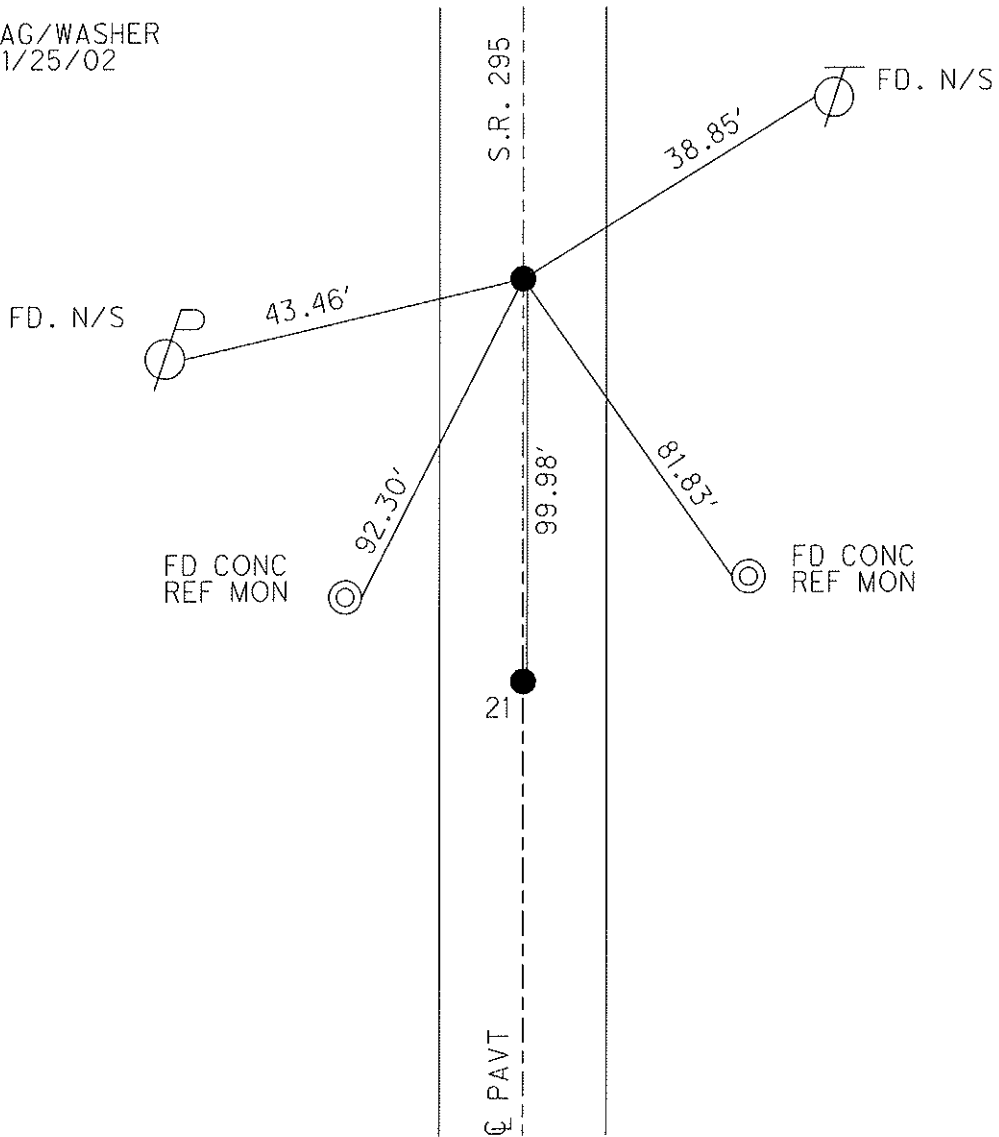
LEFT - Q PAV'T - RIGHT ON

9.8 TO LT EDGE PAVEMENT

S.L.M. 387+79



SET MAG/WASHER  
DCH, 11/25/02



O.D.O.T. DISTRICT 2 SURVEY OFFICE

PERSONNEL

REFERENCE NO. 21 / <sup>21A</sup>

SHEET 22 OF 40

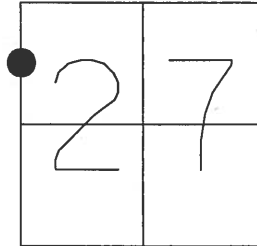
NOTES BEAUMONT  
 H.C. HOMAN  
 R.C. BEAUMONT

DATE 9-3-02  
 WEATHER P. CLOUDY  
 TEMP. 80

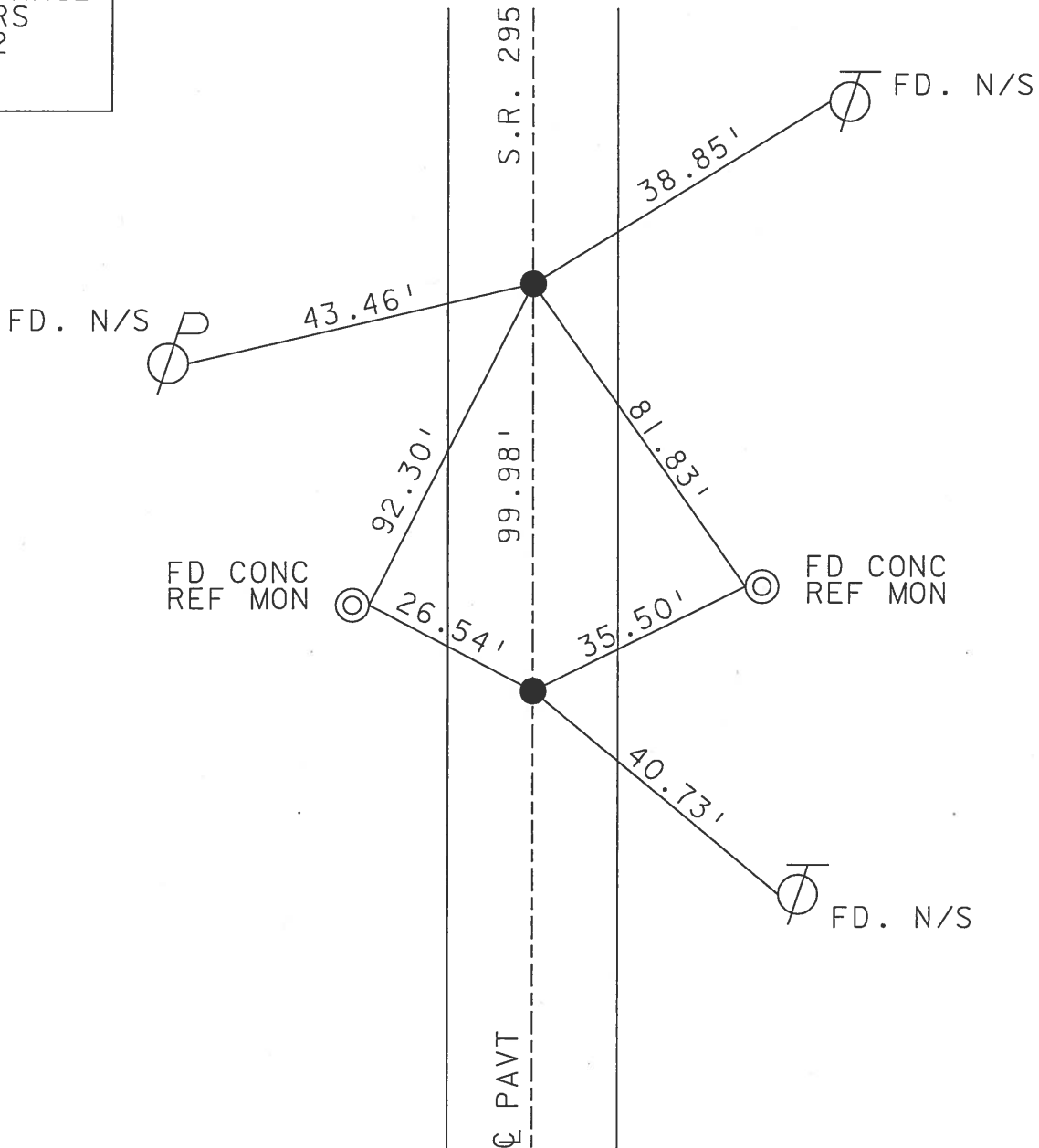
ROUTE S.R. 295  
 COUNTY LUCAS  
 TOWNSHIP SWANTON  
 SECTION 27

T 7 N R 9 E

TYPE MONUMENT PK NAIL  
 ON SURFACE - ~~BELOW~~ YES  
~~LEFT - C PAV'T - RIGHT~~ YES  
9.8 TO LT EDGE PAVEMENT  
 S.L.M. 386+79



SET MAG NAIL  
 & WASHERS  
 11-25-02  
 D.C.H.



# O.D.O.T. DISTRICT 2 SURVEY OFFICE

PERSONNEL \_\_\_\_\_

REFERENCE NO. 21 & 21-A

SHEET 18 OF 35

NOTES LOHRKE

H.C. CURTIS

R.C. Luce

DATE 8-6-91

WEATHER Cloudy

TEMP. +75

ROUTE S.R. 295

COUNTY LUCAS

TOWNSHIP SWANTON

SECTION 27

T 7 N R 9 E

TYPE MONUMENT RR Spike

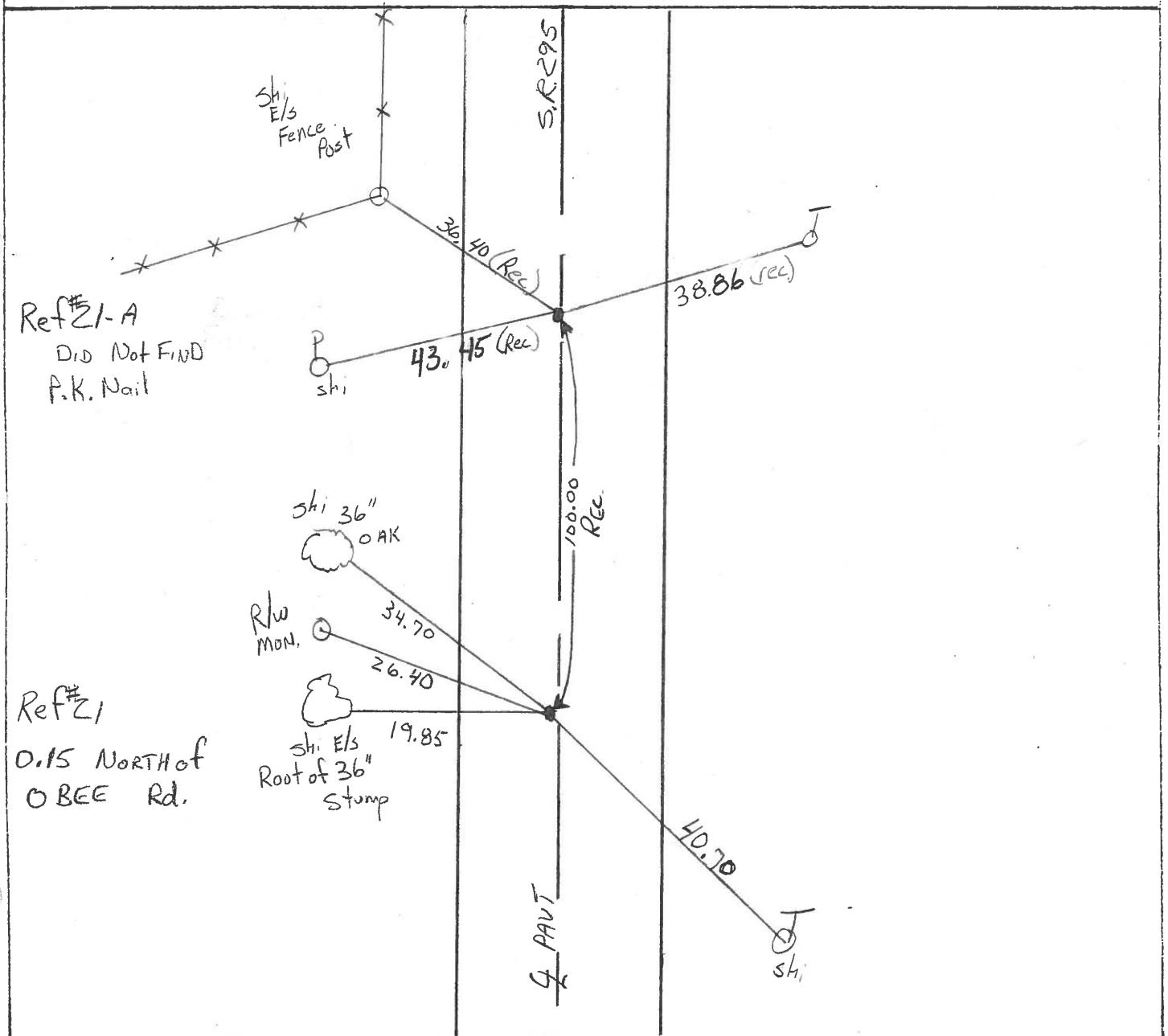
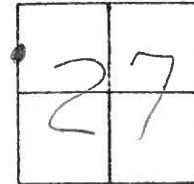
ON SURFACE - BELOW Yes

LEFT- & PAV'T. - RIGHT Yes

9.8 TO R+ EDGE PAVEMENT

S.L.M. 386+ 79

P.K. Nails  
As of  
3-24-92



County Lucas S.R. 295

Date 27 April 82

Township Swanton

Weather Cool

Section 27

Temp. 40°

T    N, R    E

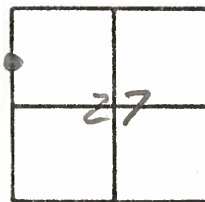
Personnel I. Stone

P. Newser

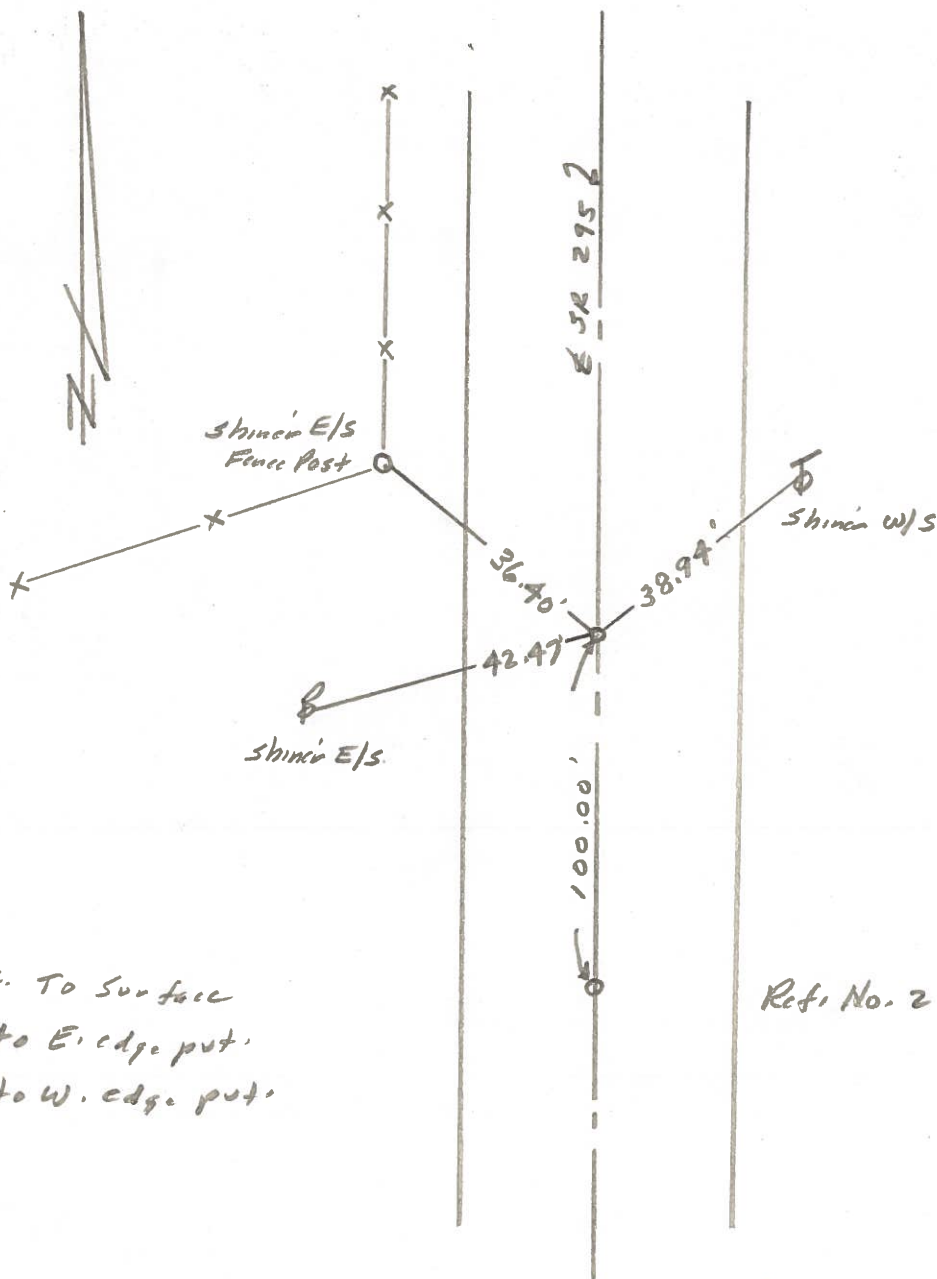
R. Michalak

\_\_\_\_\_

\_\_\_\_\_



REF. NO. 21A



Ed. P.K. To Surface  
10.5' to E. edge put.  
8.9' to W. edge put.

Ref. No. 21