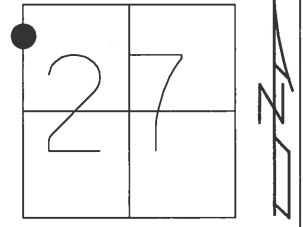


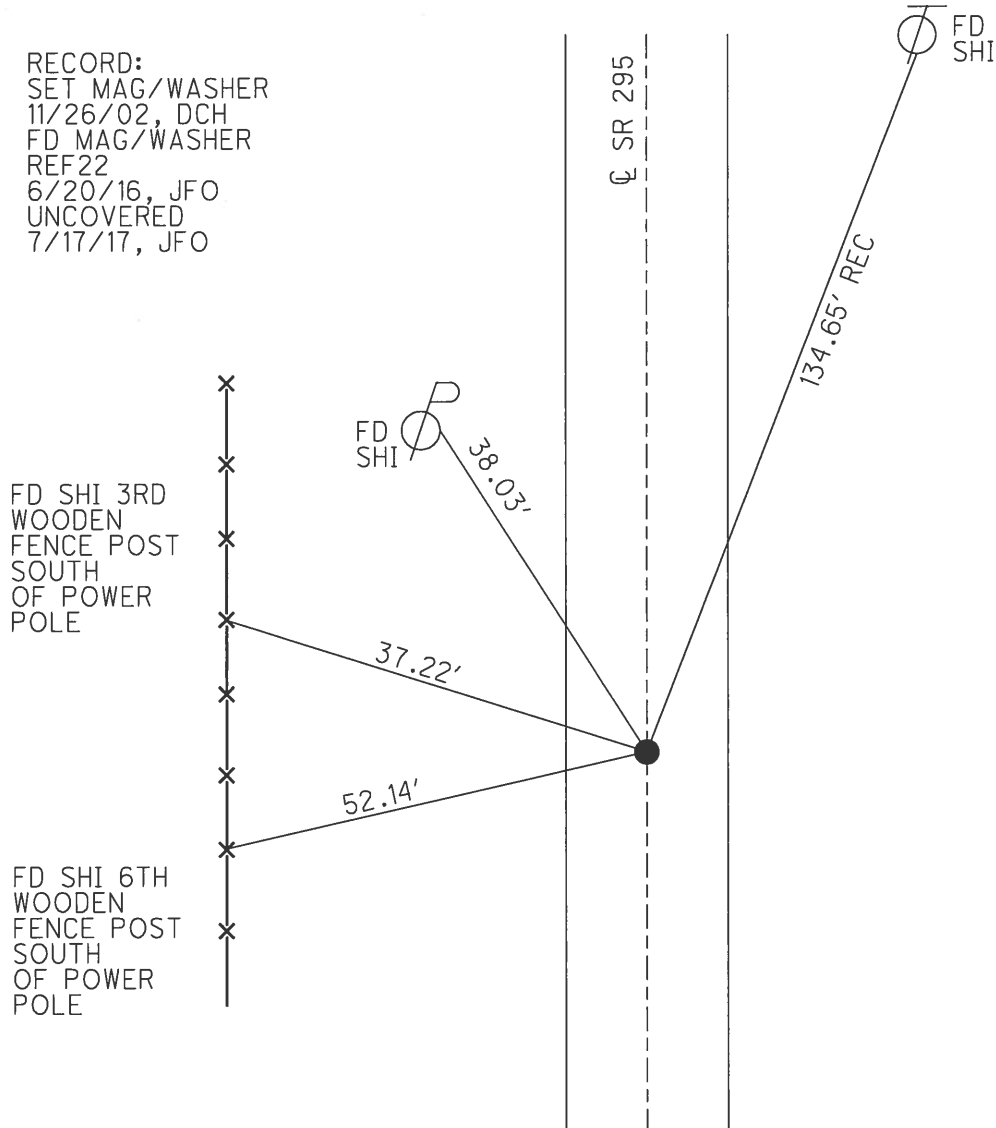
O.D.O.T. DISTRICT 2 SURVEY OFFICE (USE ONLY)

PERSONNEL _____ REFERENCE NO. 22 SHEET 27 OF 45
 NOTES BEUAMONT DATE 9/3/02 ROUTE SR 295
 H.C. HOMAN WEATHER P CLOUDY COUNTY LUCAS
 R.C. BEAUMONT TEMP. 80° TOWNSHIP SWANTON
 _____ SECTION 27
 _____ T 7 N R 9 E

TYPE MONUMENT P.K. NAIL
 ON SURFACE - BELOW _____ ON _____
 LEFT - Q PAV'T - ~~RIGHT~~ 0.5'
10 TO LT EDGE PAVEMENT
 S.L.M. 392+32
 GRID: NORTHING: 685964.775 EASTING: 1605849.649



RECORD:
 SET MAG/WASHER
 11/26/02, DCH
 FD MAG/WASHER
 REF22
 6/20/16, JFO
 UNCOVERED
 7/17/17, JFO



O.D.O.T. DISTRICT 2 SURVEY OFFICE

PERSONNEL

REFERENCE NO. 22

SHEET 27 OF 45

NOTES BEAUMONT

DATE 9-3-02

ROUTE S.R. 295

H.C. HOMAN

WEATHER P. CLOUDY

COUNTY LUCAS

R.C. BEAUMONT

TEMP. 80°

TOWNSHIP SWANTON

SECTION 27

T 7 N R 9 E

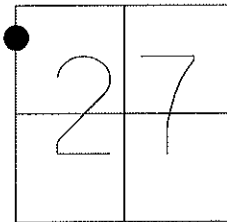
TYPE MONUMENT PK NAIL

ON SURFACE - BELOW ON

LEFT - Q PAV'T - ~~RIGHT~~ 1.0'

10 TO LT EDGE PAVEMENT

S.L.M. 392+32



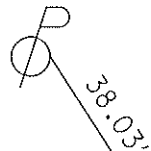
SET MAG/WASHER
DCH, 11-26-02

FD N/S 3RD
WOODEN
FENCE POST
SOUTH
OF POWER
POLE

FD N/S 6TH
WOODEN
FENCE POST
SOUTH
OF POWER
POLE



FD. N/S



37.22'

52.14'

S.R. 295

Q PAVT



FD. N/S

134.65' (REC.)



O.D.O.T. DISTRICT 2 SURVEY OFFICE

PERSONNEL _____

REFERENCE NO. 22

SHEET 19 OF 35

NOTES LOEHRKE

H.C. CURTIS

R.C. Luce

DATE 8-5-91

WEATHER Pt Cloudy

TEMP. +75

ROUTE SR. 295

COUNTY LUCAS

TOWNSHIP SWANTON

SECTION 27

T. 7 N. R. 9 E

TYPE MONUMENT P.K. Nail

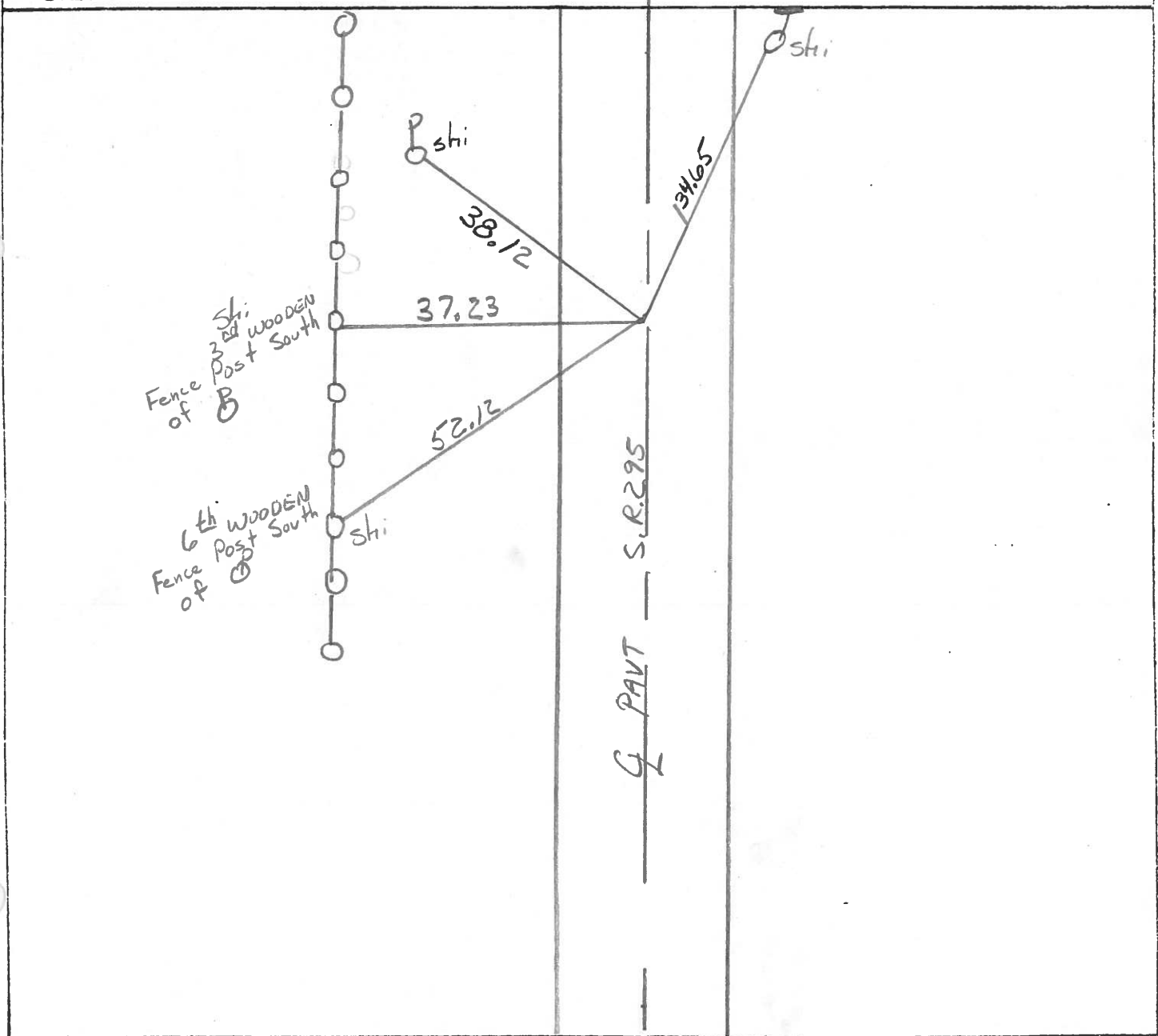
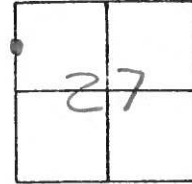
ON SURFACE - BELOW YES

LEFT- & PAV'T. - RIGHT 0.7

9.0 TO Lt EDGE PAVEMENT

S.L.M. 392+32

P.K. Nail
3-25-92



County Lucas S.R. 295

Date 27 April 82

Township Swanton

Weather Cool

Section 27

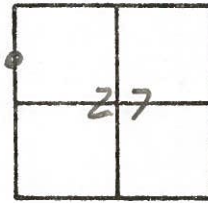
Temp. 42°

T, N, R, E

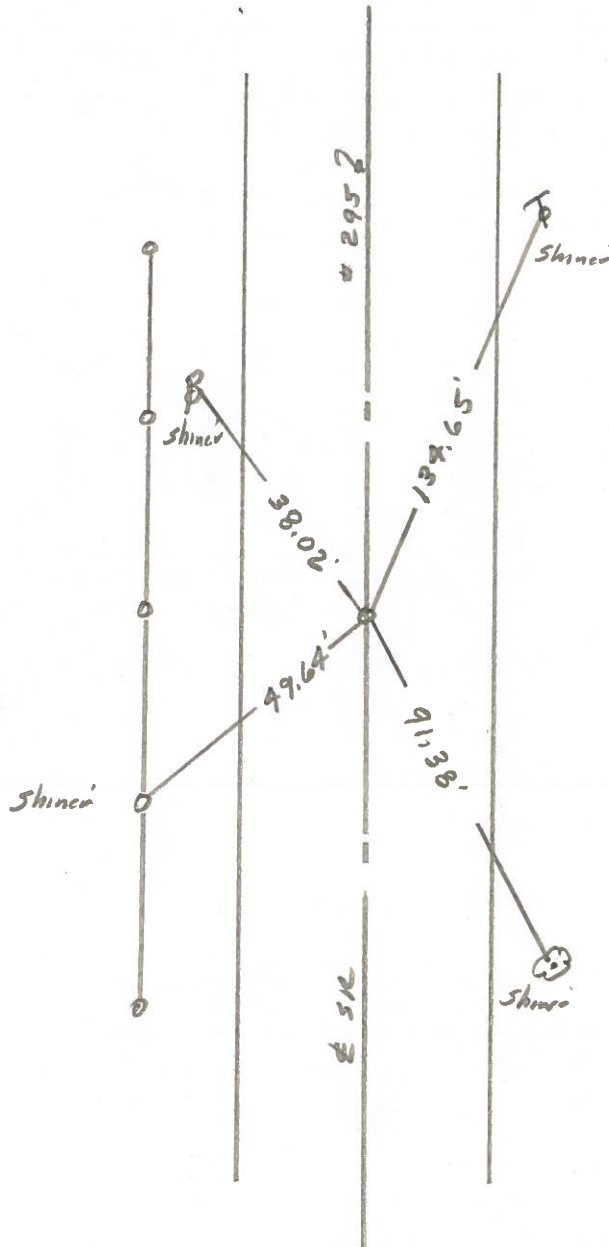
Personnel I. Stone

P. Newsum

R. Michalak



Ref. No. 22



Ft. PK Nail To Surface
8.9' To W. edge put,
10.4' To E. edge put.

PERSONNEL	TITLE	PERSONNEL	TITLE	COUNTY	DATE
Stone	Notes			Lucas	12 June 68
Beck	Flag			S. R. # 295	WEATHER Fair
Hichalak	Tape			SEC.	TEMP. 75°
Schroeder	Tape				

DESCRIPTION References to Control Points JOB NO. _____

