

O.D.O.T. DISTRICT 2 SURVEY OFFICE (USE ONLY)

PERSONNEL \_\_\_\_\_ REFERENCE NO. 23 SHEET 28 OF 45

NOTES RHOADES DATE 4/4/17 ROUTE SR 295  
 H.C. O'DONNELL WEATHER P CLOUDY COUNTY LUCAS  
 R.C. HELDMAN TEMP. 52° TOWNSHIP SWANTON  
 \_\_\_\_\_ SECTION 22  
 \_\_\_\_\_ T 7 N R 9 E

TYPE MONUMENT HARROW TOOTH

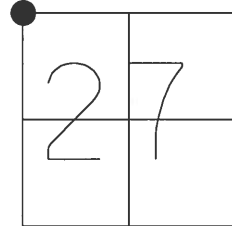
~~ON SURFACE~~ - BELOW 4"

LEFT - CL PAV'T - ~~RIGHT~~ 0.6'

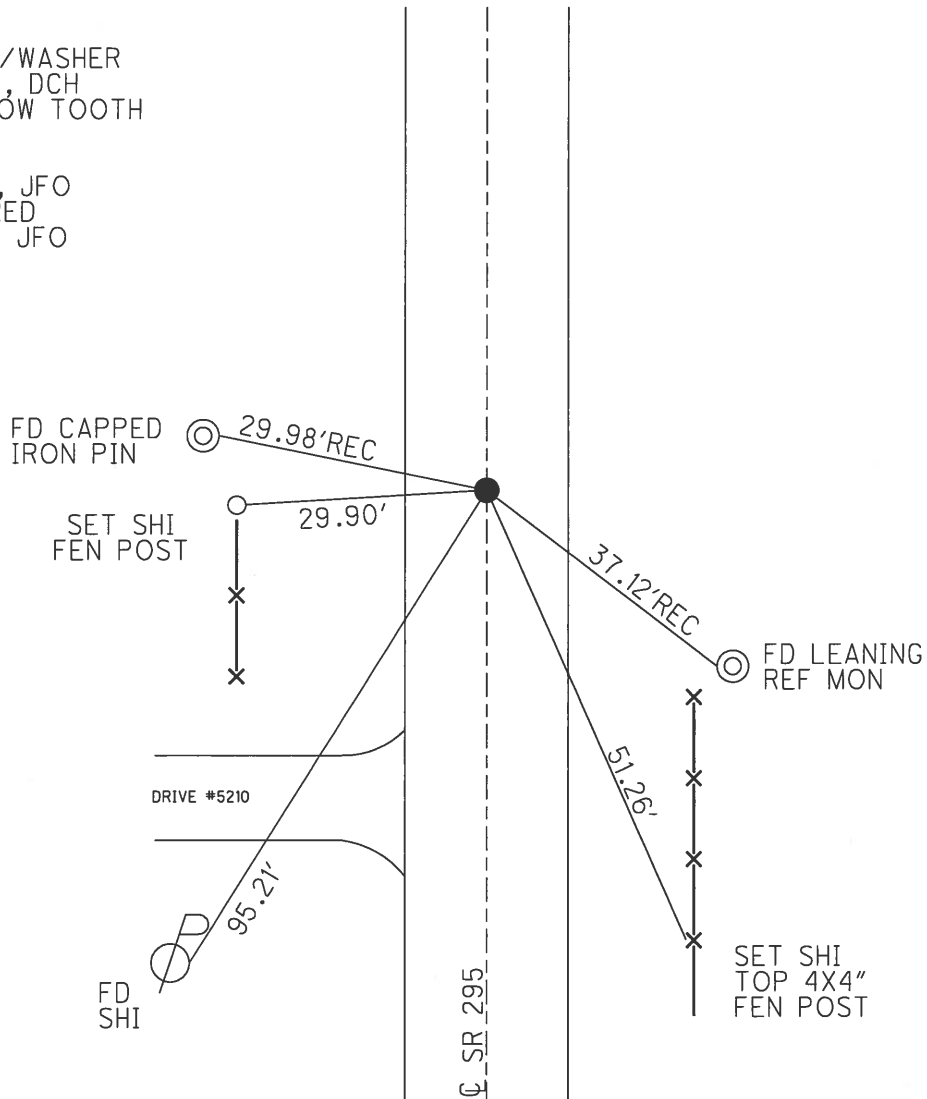
11' TOLT EDGE PAVEMENT

S.L.M. 405+97

GRID: NORTHING: 687329.875 EASTING: 1605852.618



RECORD:  
 SET MAG/WASHER  
 11/26/02, DCH  
 FD HARROW TOOTH  
 4" DOWN  
 REF23  
 6/20/16, JFO  
 UNCOVERED  
 7/27/17, JFO



O.D.O.T. DISTRICT 2 SURVEY OFFICE

PERSONNEL

REFERENCE NO. 23

SHEET 28 OF 45

NOTES BEAUMONT

DATE 9-3-02

ROUTE S.R. 295

H.C. HOMAN

WEATHER P. CLOUDY

COUNTY LUCAS

R.C. BEAUMONT

TEMP. 80°

TOWNSHIP SWANTON

SECTION 22

T 7 N R 9 E

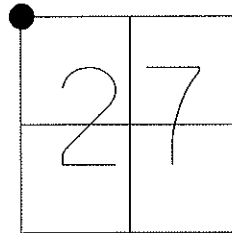
TYPE MONUMENT PK NAIL

ON SURFACE - ~~BELOW~~ ON

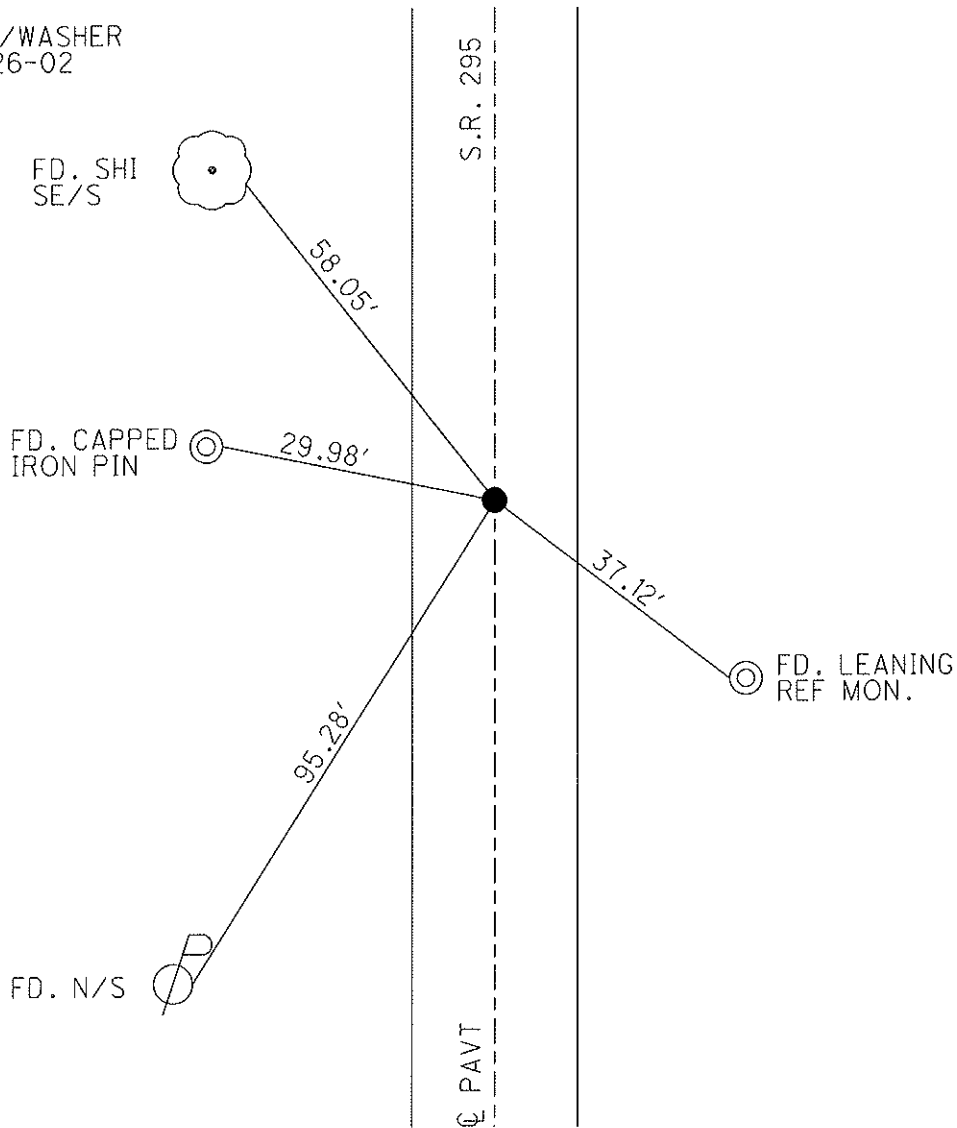
LEFT - Q PAV'T - RIGHT ON

11' TO LT. EDGE PAVEMENT

S.L.M. 405+97



SET MAG/WASHER  
DCH, 11-26-02



# O.D.O.T. DISTRICT 2 SURVEY OFFICE

PERSONNEL \_\_\_\_\_

REFERENCE NO. 23

SHEET 20 OF 35

NOTES LOGARKE

H.C. LURTIS

R.C. LUCE

DATE 8-5-91

WEATHER PT CLOUDY

TEMP. +75

ROUTE S.R. 295

COUNTY LUCAS

TOWNSHIP SWANTON

SECTION 22

TIN 9 E

P.K. NAIL  
As of  
3-25-92

TYPE MONUMENT Sq HEAD Bolt

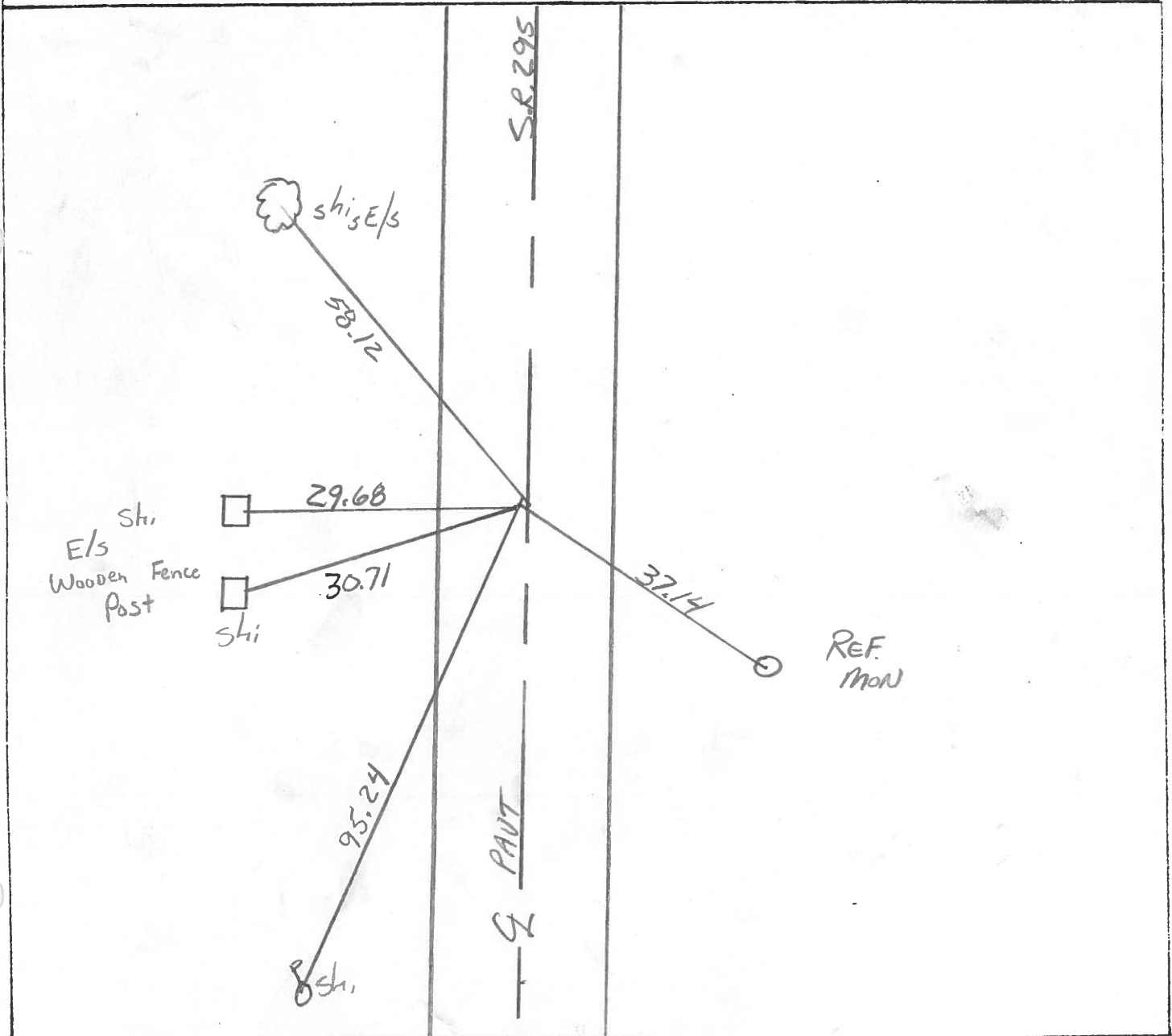
ON SURFACE - BELOW YES

LEFT- & PAV'T. - RIGHT 0.9'

9.4 TO LT EDGE PAVEMENT

S.L.M. 405+97

21	22
28	27



County Lucas S.R. 295

Date 27 April 82

Township Swanton

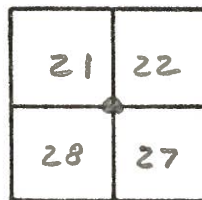
Weather Cool

Section 21-22-27-28

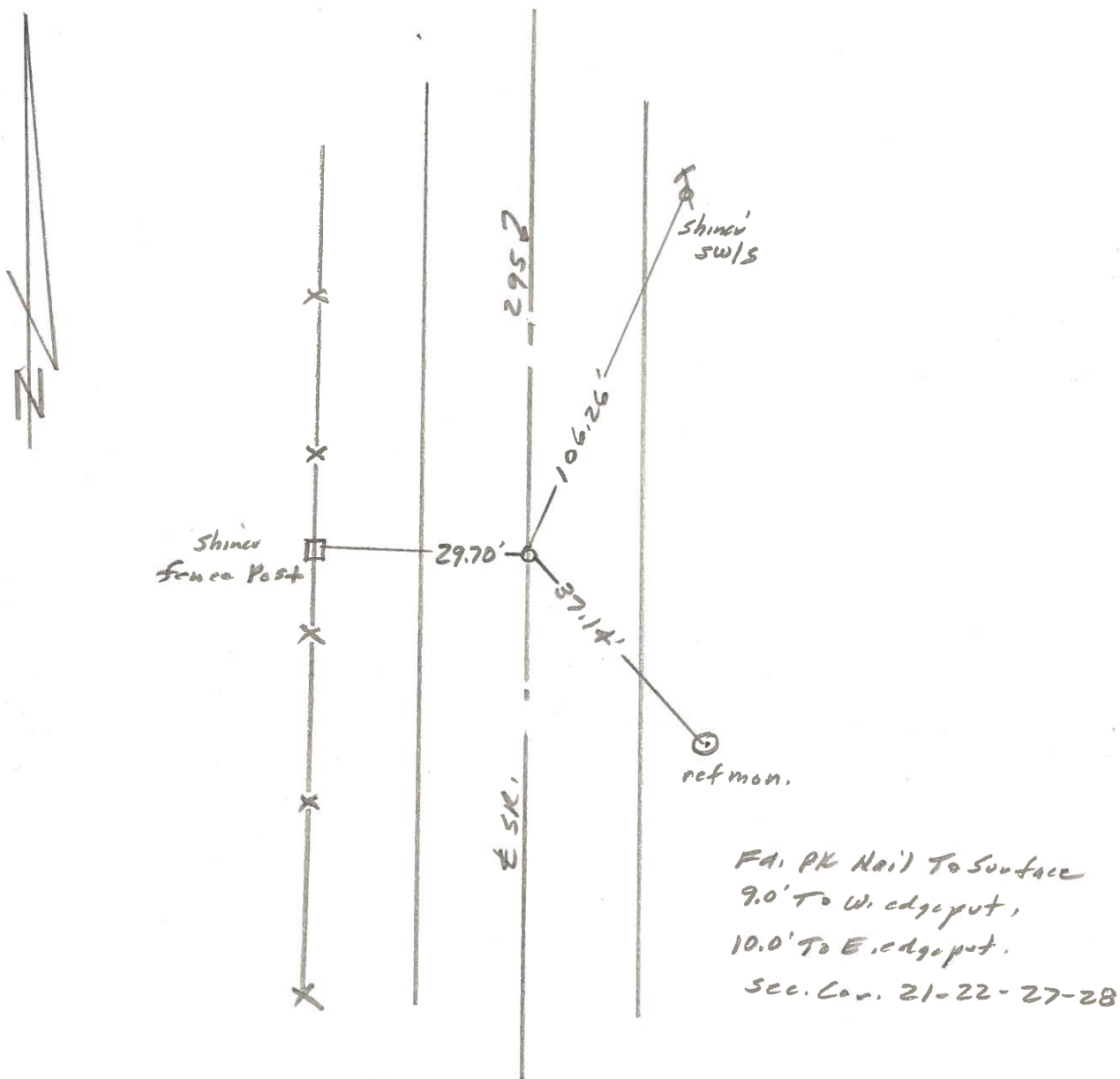
Temp. 42°

T, N, R, E

Personnel J. Stone  
P. Neuser  
R. Michalak



REF. NO. 23



PERSONNEL	TITLE	PERSONNEL	TITLE	COUNTY	DATE	WEATHER	TEMP.
Stang	Notes			Lucas	12 June 68	Fair	75°
Beck	Flag			S. R. # 295			
Michalak	Tape						
Schroeder	Tape						

DESCRIPTION: *References to Control Points*      JOB NO. \_\_\_\_\_

