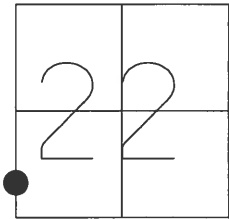


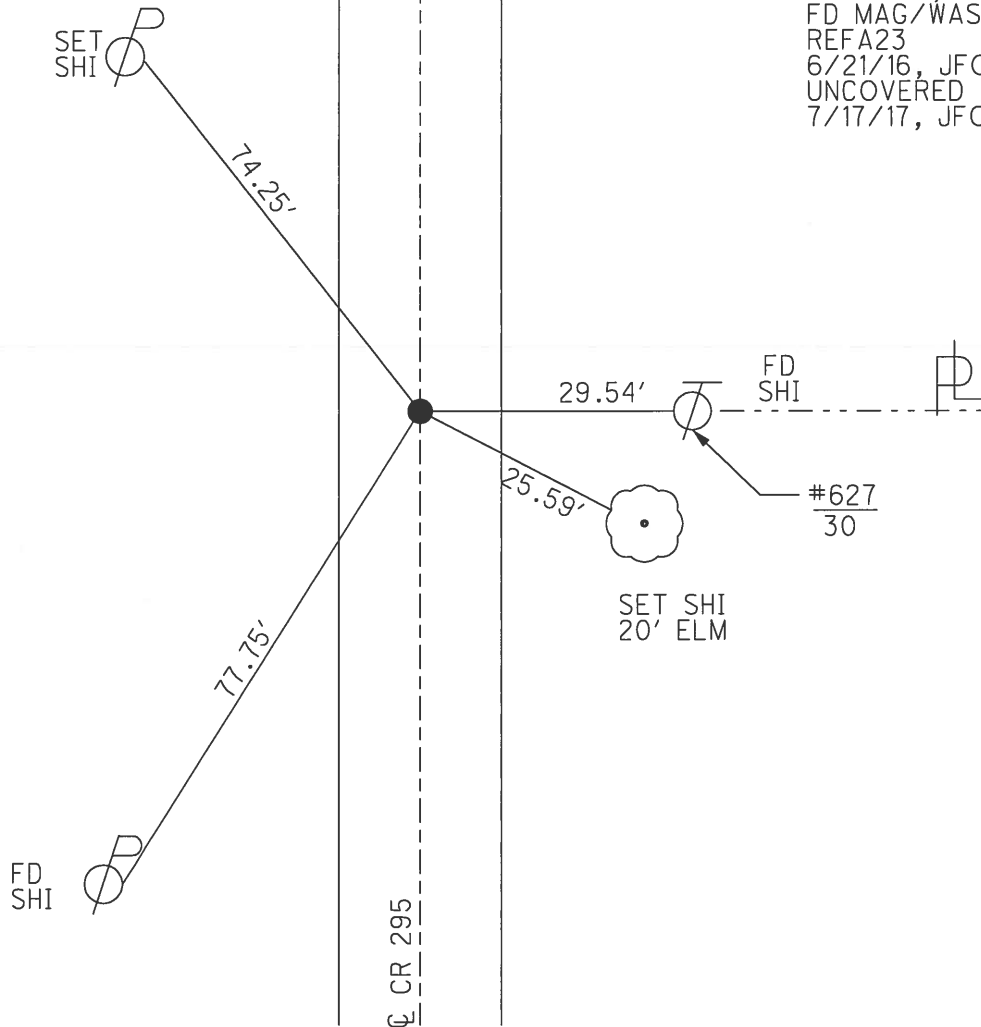
O.D.O.T. DISTRICT 2 SURVEY OFFICE (USE ONLY)

PERSONNEL	REFERENCE NO.	<u>23 A</u>	SHEET	<u>29</u>	OF	<u>45</u>
NOTES	DATE	<u>6/21/16</u>	ROUTE	<u>SR 295</u>		
H.C.	WEATHER	<u>WINDY</u>	COUNTY	<u>LUCAS</u>		
R.C.	TEMP.	<u>78°</u>	TOWNSHIP	<u>SWANTON</u>		
			SECTION	<u>22</u>		
				<u>T 7 N R 9 E</u>		

TYPE MONUMENT MAG/WASHER
 ON SURFACE - ~~BELOW~~ ON
 LEFT - ℄ PAV'T - RIGHT ON
11' TO LT EDGE PAVEMENT
 S.L.M. 408+38
 GRID: NORTHING: 687568.868 EASTING: 1605854.966



RECORD:
 SET MAG/WASHER
 11/26/02, DCH
 FD MAG/WASHER
 REFA23
 6/21/16, JFO
 UNCOVERED
 7/17/17, JFO



O.D.O.T. DISTRICT 2 SURVEY OFFICE

PERSONNEL

REFERENCE NO. 23A

SHEET 29 OF 45

NOTES BEAUMONT

DATE 9-3-02

ROUTE S.R. 295

H.C. HOMAN

WEATHER P. CLOUDY

COUNTY LUCAS

R.C. BEAUMONT

TEMP. 80°

TOWNSHIP SWANTON

SECTION 22

T 7 N R 9 E

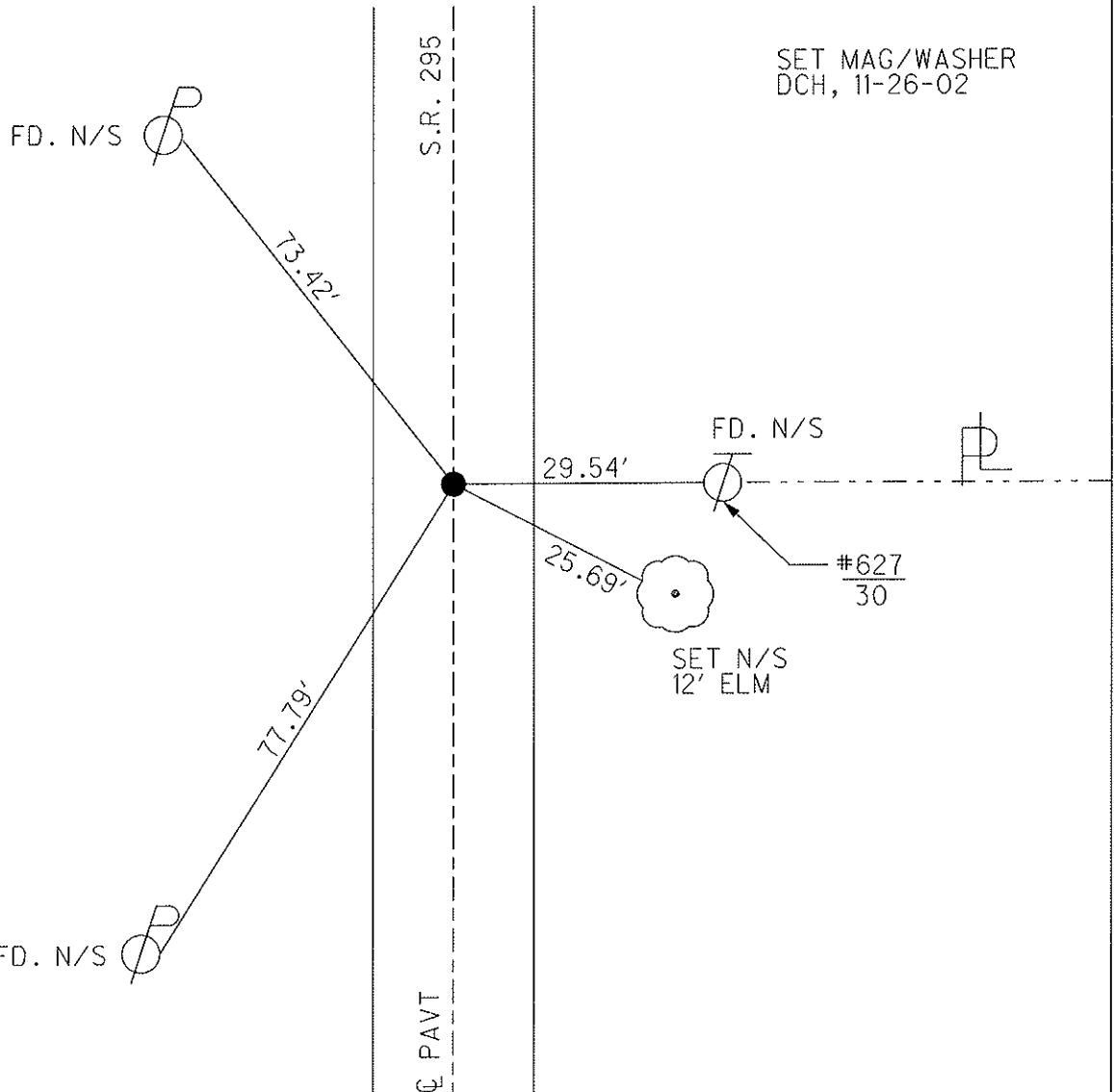
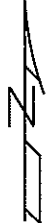
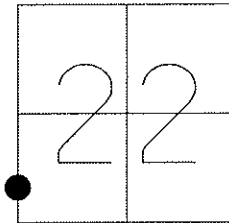
TYPE MONUMENT PK NAIL

ON SURFACE - ~~BELOW~~ ON

LEFT - Q PAV'T - RIGHT ON

11' TO LT EDGE PAVEMENT

S.L.M. 408+38



O.D.O.T. DISTRICT 2 SURVEY OFFICE

PERSONNEL

REFERENCE NO. 23-A

SHEET 21 OF 35

NOTES LOHRKE

H.C. CURTIS

R.C. Luce

DATE 8-5-91

WEATHER Pt Cloudy

TEMP. +75

ROUTE S.R. 295

COUNTY LUCAS

TOWNSHIP SWANTON

SECTION 22

T 7 N R 9 E

TYPE MONUMENT P.K. Nail

ON SURFACE - BELOW Yes

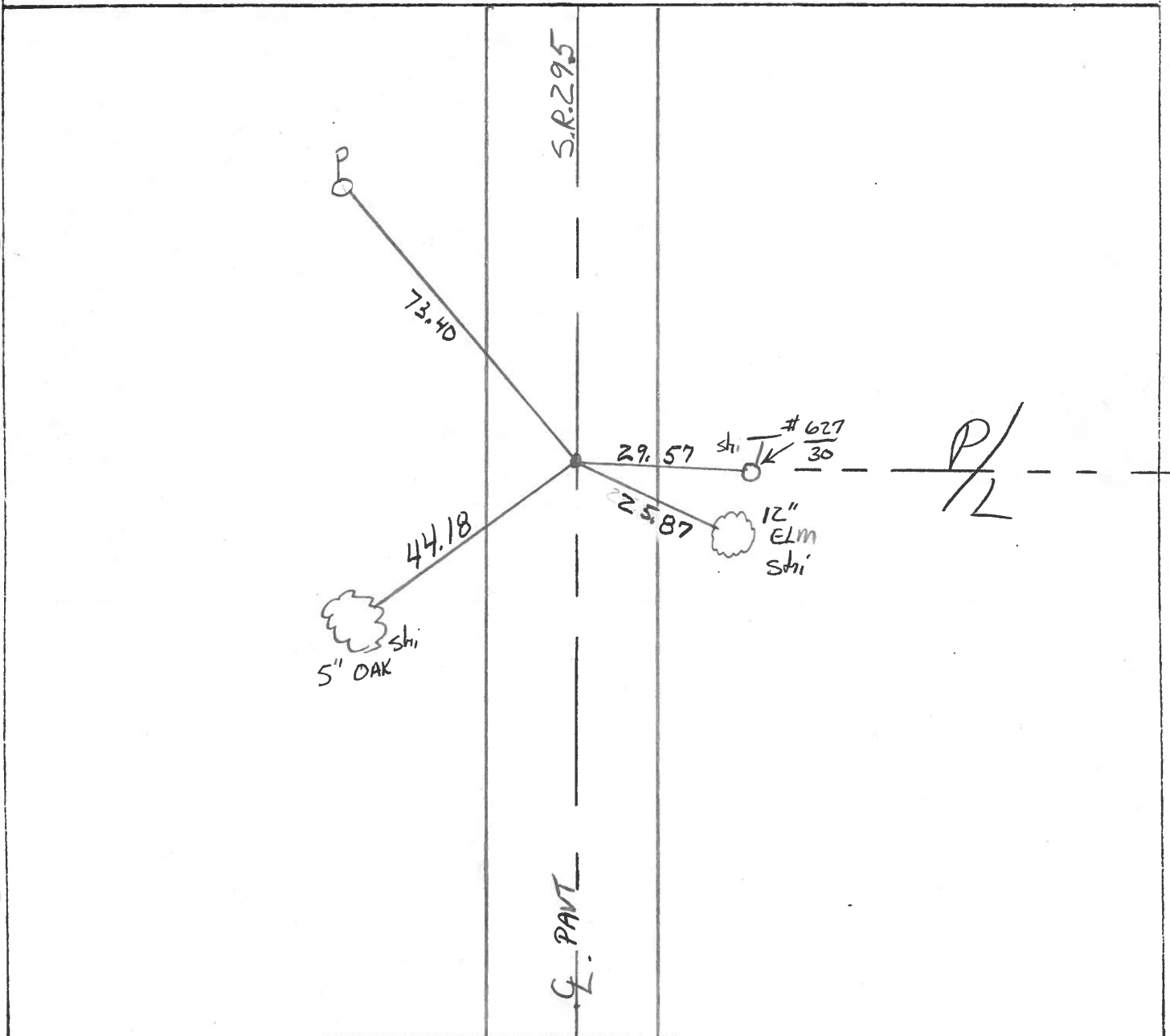
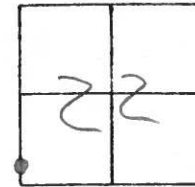
LEFT - C PAV'T. - RIGHT 0.4

9.7 TO LT EDGE PAVEMENT

S.L.M. 408+38

set P.K. / WASHER

3-25-92



County Lucas S.R. 295

Date 27 April 82

Township Swanton

Weather Cool

Section 22

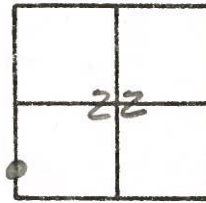
Temp. 42°

T, N, R, E

Personnel I. Stone

P. Newsen

R. Michalak



REF. NO. 23A

