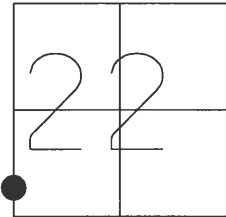


O.D.O.T. DISTRICT 2 SURVEY OFFICE (USE ONLY)

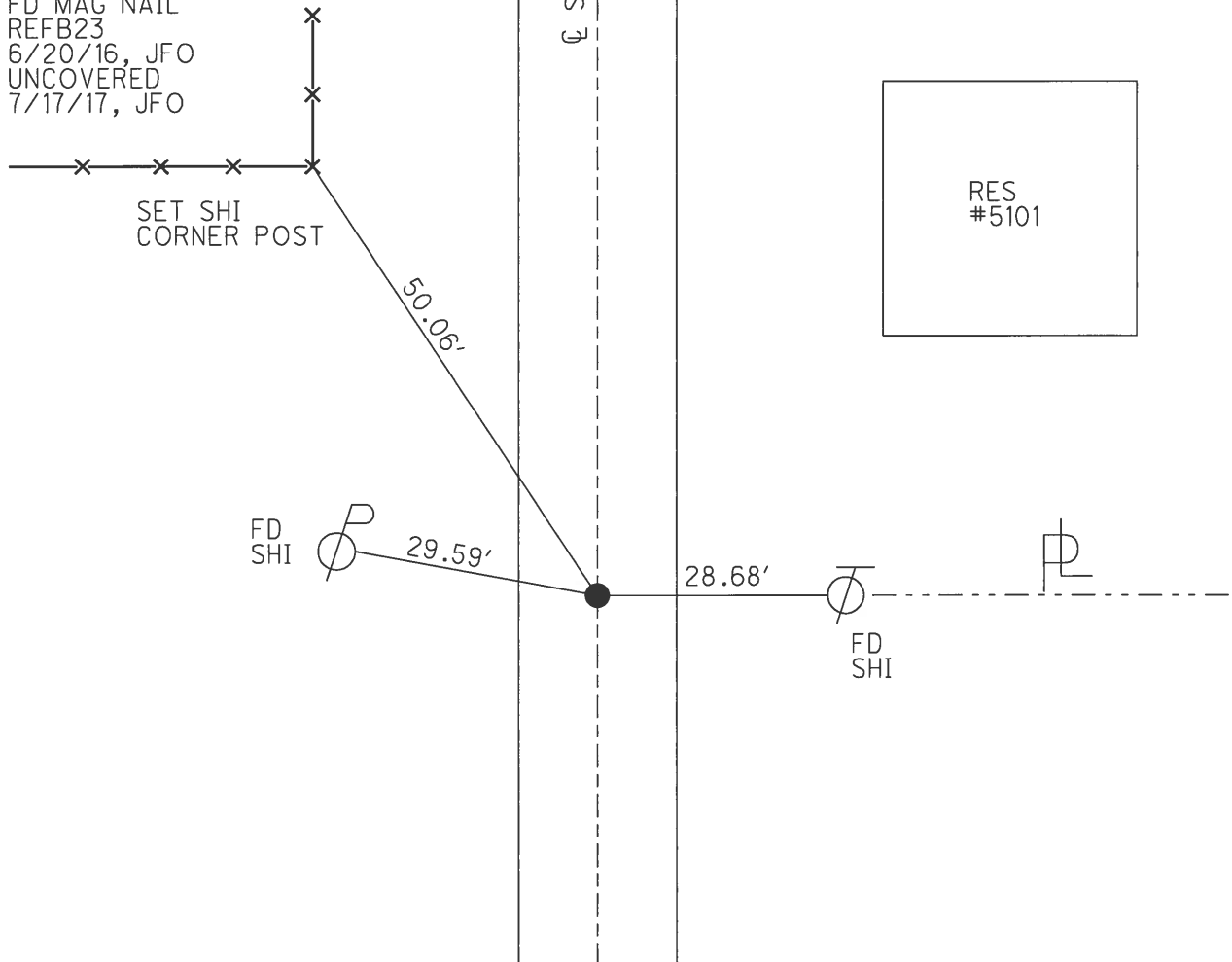
PERSONNEL _____ REFERENCE NO. 23 B SHEET 30 OF 45
 NOTES BEAUMONT DATE 9/3/02 ROUTE SR 295
 H.C. HOMAN WEATHER P CLOUDY COUNTY LUCAS
 R.C. BEAUMONT TEMP. 80° TOWNSHIP SWANTON
 _____ SECTION 22
 _____ T 7 N R 9 E

TYPE MONUMENT P.K. NAIL
 ON SURFACE - ~~BELOW~~ ON
 LEFT - Q PAV'T - RIGHT ON
.11' TO LT EDGE PAVEMENT
 S.L.M. 411+08



GRID: NORTHING: 687841.309 EASTING: 1605857.473

RECORD:
 SET MAG/WASHER
 11/26/02, DCH
 FD MAG NAIL
 REFB23
 6/20/16, JFO
 UNCOVERED
 7/17/17, JFO



O.D.O.T. DISTRICT 2 SURVEY OFFICE

PERSONNEL _____

REFERENCE NO. 23B

SHEET 30 OF 45

NOTES BEAUMONT

DATE 9-3-02

ROUTE S.R. 295

H.C. HOMAN

WEATHER P. CLOUDY

COUNTY LUCAS

R.C. BEAUMONT

TEMP. 80°

TOWNSHIP SWANTON

SECTION 22

T 7 N R 9 E

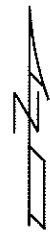
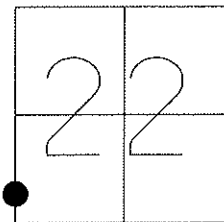
TYPE MONUMENT PK NAIL

ON SURFACE - ~~BELOW~~ ON

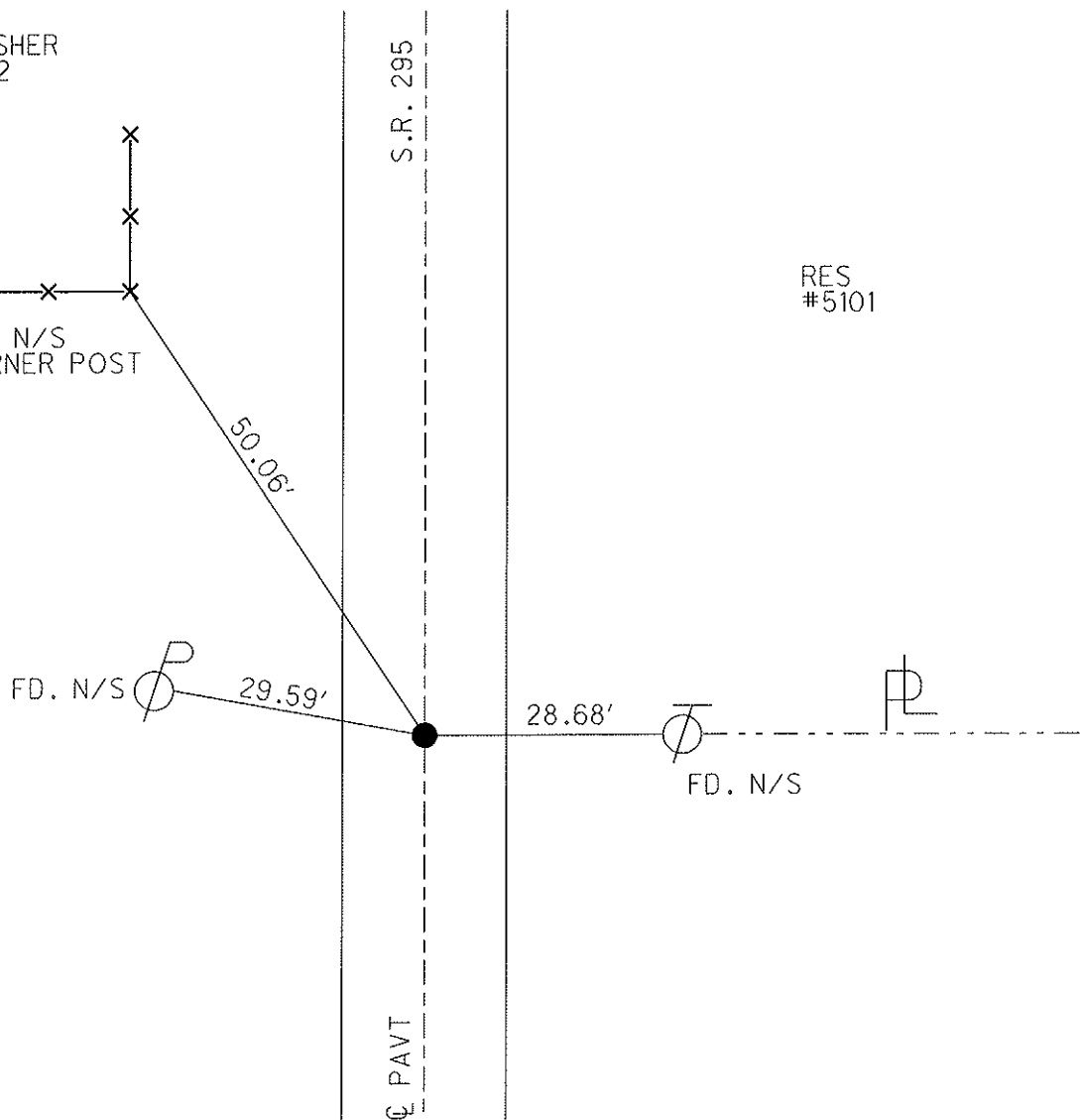
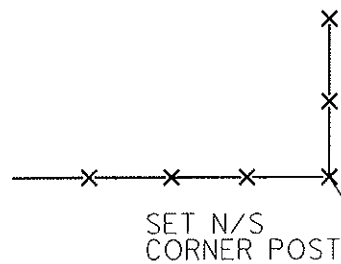
LEFT - Q PAV'T - RIGHT ON

11' TO LT EDGE PAVEMENT

S.L.M. 411+08



SET MAG/WASHER
DCH, 11-26-02



O.D.O.T. DISTRICT 2 SURVEY OFFICE

PERSONNEL

REFERENCE NO. 23-B

SHEET 22 OF 35

NOTES LOEHRKE

H.C. CURTIS

R.C. LUCE

DATE 8-5-91

WEATHER Clear

TEMP. +75

ROUTE S.R. 295

COUNTY LUCAS

TOWNSHIP SWANTON

SECTION 22

T 7 N R 9 E

TYPE MONUMENT R.R Spike Set P.K./WASHER

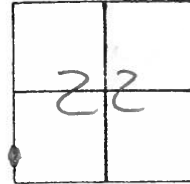
ON SURFACE - BELOW 1"

LEFT - C PAV'T. - RIGHT Yes

9.6 TO Lt EDGE PAVEMENT

S.L.M. 411 + 08

3-25-92



RES # 5101

29.61
Shi

28.67
Shi

P/L

74.94

Shi MAILBOX
Post # 5135

S.R. 295

9 Pavt

County Lucas S.R. 295

Date 27 April 82

Township Swanton

Weather Cool

Section 22

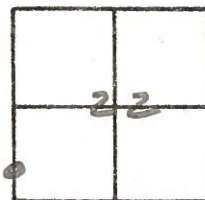
Temp. 42

T, N, R, E

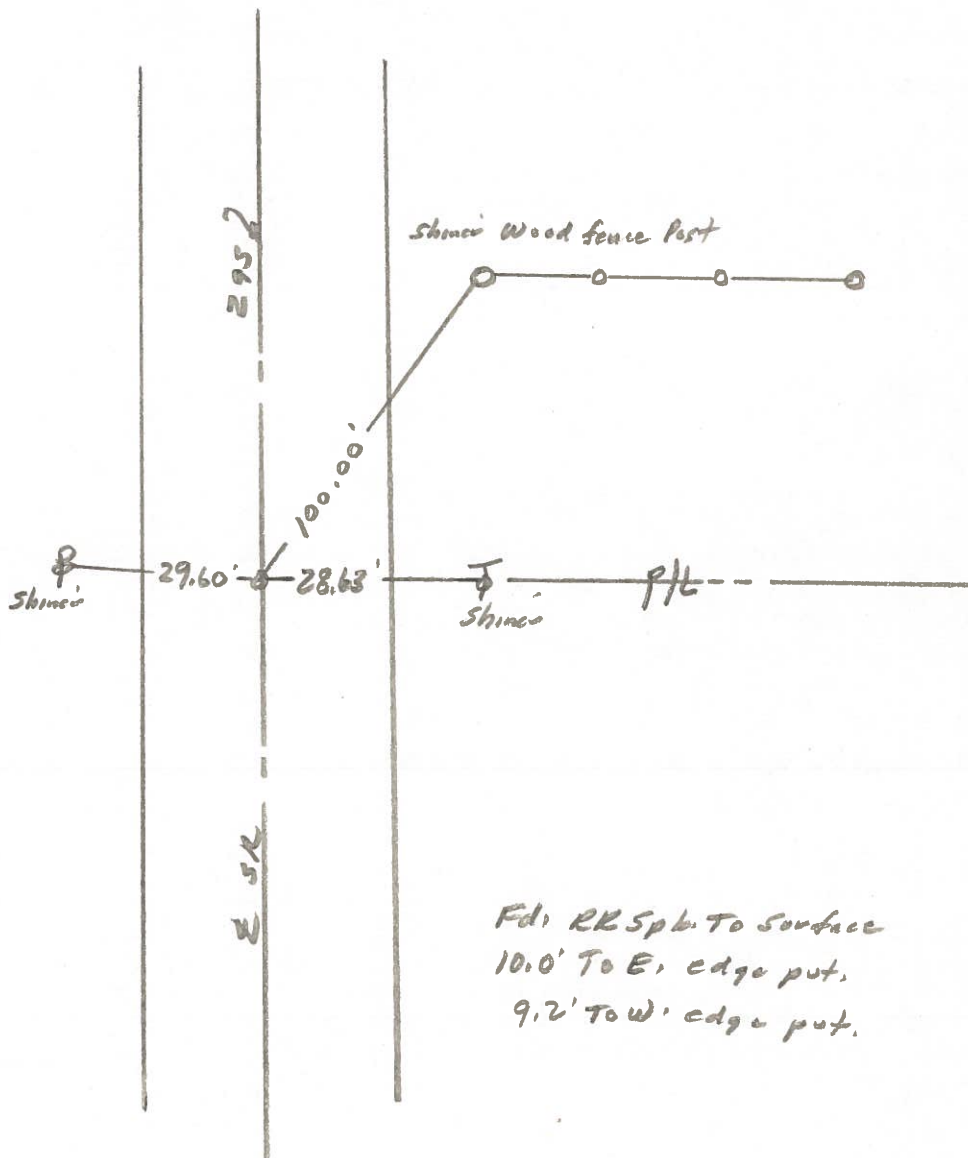
Personnel L. Stone

P. Newser

R. Michalak



REF. No. 23 B



Fd: RK Sp. To surface
 10.0' To E, edge put.
 9.2' To W, edge put.