

O.D.O.T. DISTRICT 2 SURVEY OFFICE (USE ONLY)

PERSONNEL _____ REFERENCE NO. 24 B SHEET 35 OF 45

NOTES	<u>RHOADES</u>	DATE	<u>6/21/16</u>	ROUTE	<u>SR 295</u>
H.C.	<u>O'DONNELL</u>	WEATHER	<u>WINDY</u>	COUNTY	<u>LUCAS</u>
R.C.	<u>RHOADES</u>	TEMP.	<u>78°</u>	TOWNSHIP	<u>SWANTON</u>
	<u>KEFFER</u>			SECTION	<u>22</u>
				T	<u>7</u> N
				R	<u>9</u> E

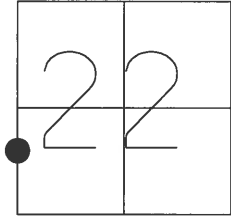
TYPE MONUMENT LG.R.R.SPIKE

~~ON SURFACE~~ - BELOW 4"

~~LEFT~~ - Q PAV'T - RIGHT 1'

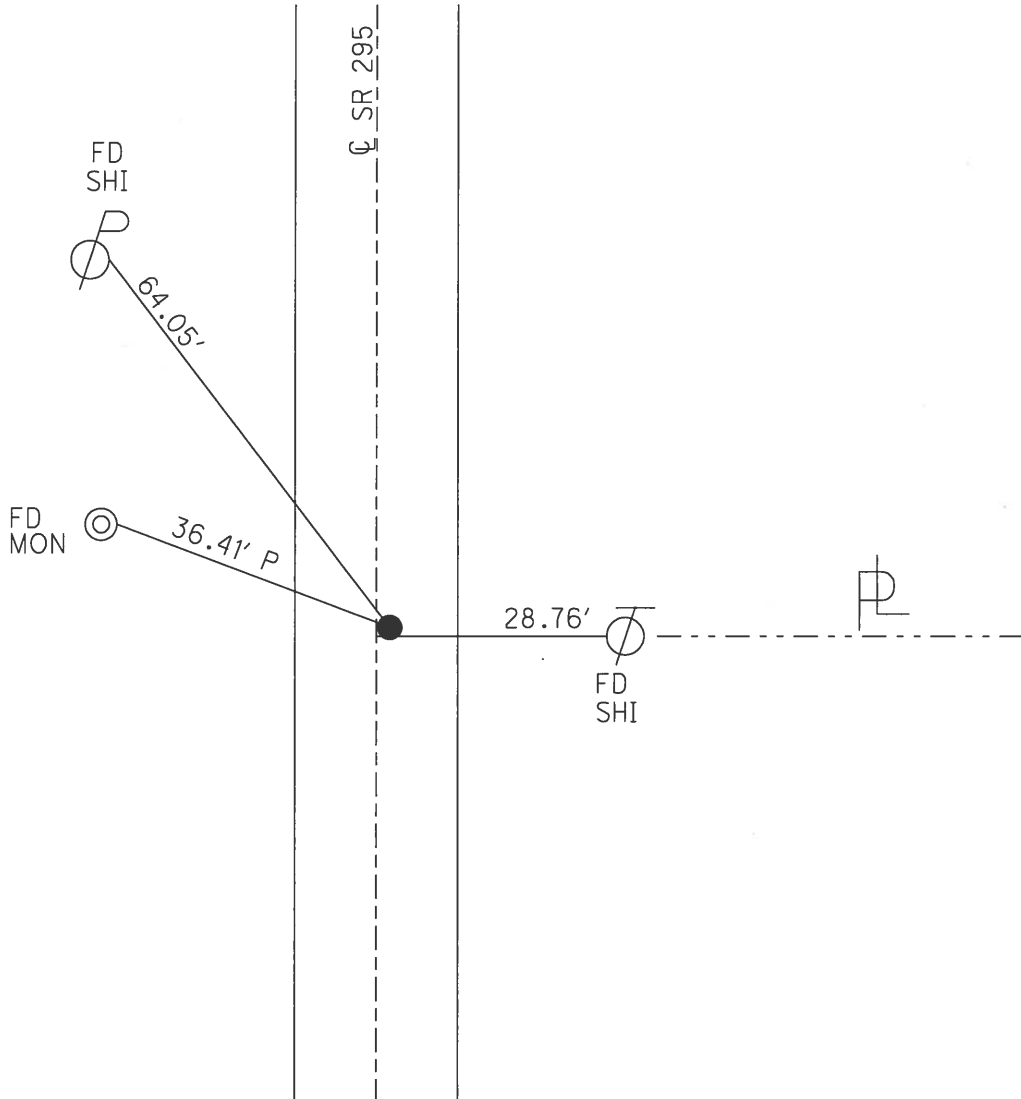
12' TO LT EDGE PAVEMENT

S.L.M. 425+45



GRID: NORTHING: 689276.886 EASTING: 1605870.504

RECORD:
 SET MAG/WASHER
 11/26/02, DCH
 FD LG.R.R.SPIKE
 4" DOWN
 REFB24
 6/21/16, JFO
 SET MAG/WASHER
 NEWREFB24
 7/27/17, JFO



O.D.O.T. DISTRICT 2 SURVEY OFFICE

PERSONNEL _____

REFERENCE NO. 24B

SHEET 35 OF 45

NOTES HOMAN

DATE 9-9-02

ROUTE S.R. 295

H.C. HOMAN

WEATHER SUNNY

COUNTY LUCAS

R.C. BROWN

TEMP. 88°

TOWNSHIP SWANTON

SECTION 22

T 7 N R 9 E

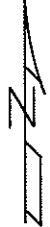
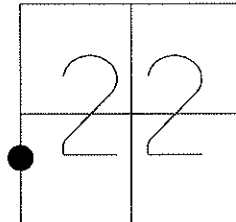
TYPE MONUMENT PK NAIL

ON SURFACE - ~~BELOW~~ ON

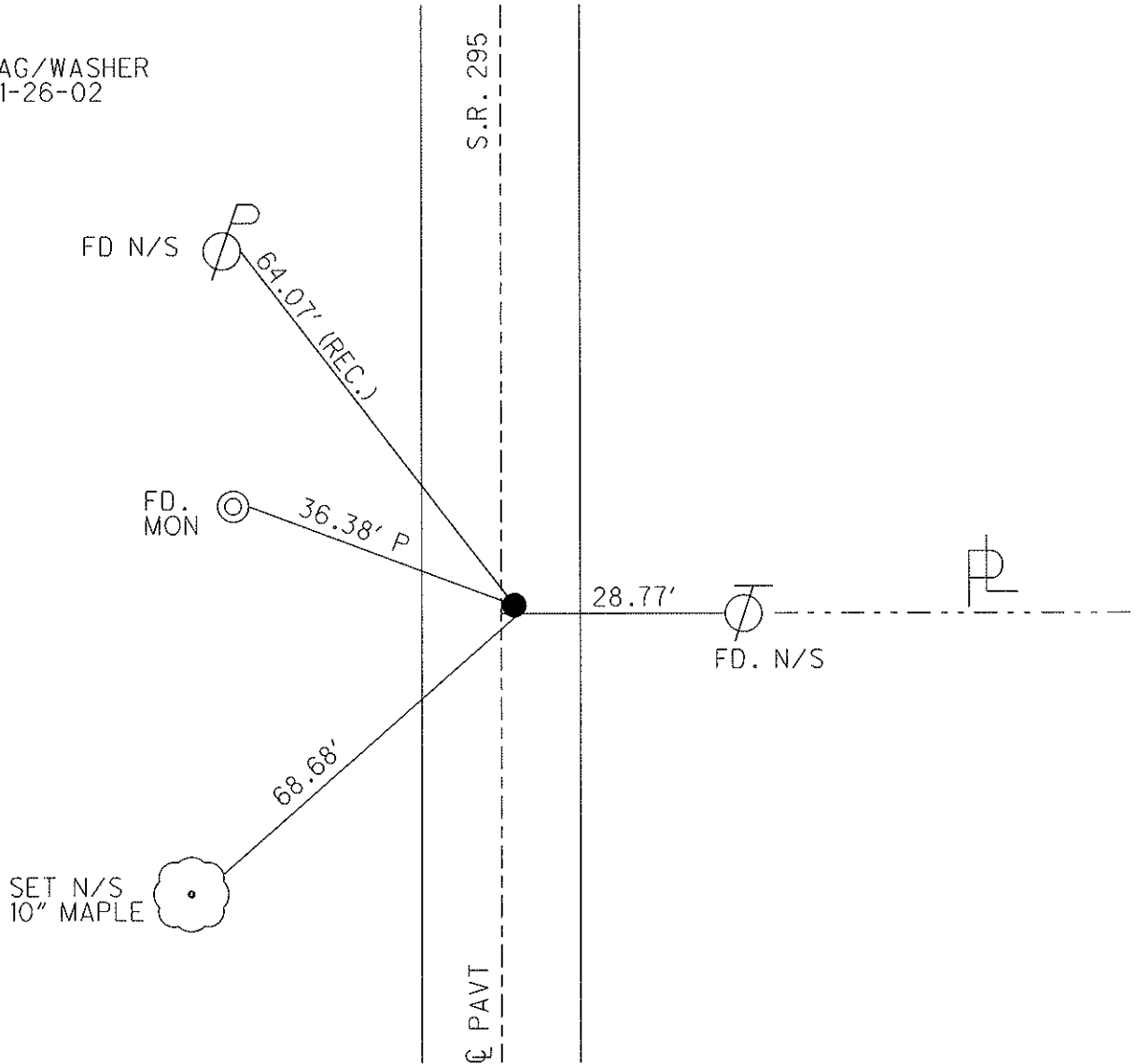
~~LEFT~~ - CL PAV'T - RIGHT 1'

12' TO LT EDGE PAVEMENT

S.L.M. 425+45



SET MAG/WASHER
DCH, 11-26-02



O.D.O.T. DISTRICT 2 SURVEY OFFICE

PERSONNEL

REFERENCE NO. 24-B

SHEET 27 OF 35

NOTES LOEHRKE

H.C. CURTIS

R.C. Luce

DATE 8-5-91

WEATHER Clear

TEMP. +70

ROUTE S.R. 295

COUNTY LUCAS

TOWNSHIP SWANTON

SECTION 22

T 7 N R 9 E

TYPE MONUMENT P.K. Nail

Set P.K. / WASHER

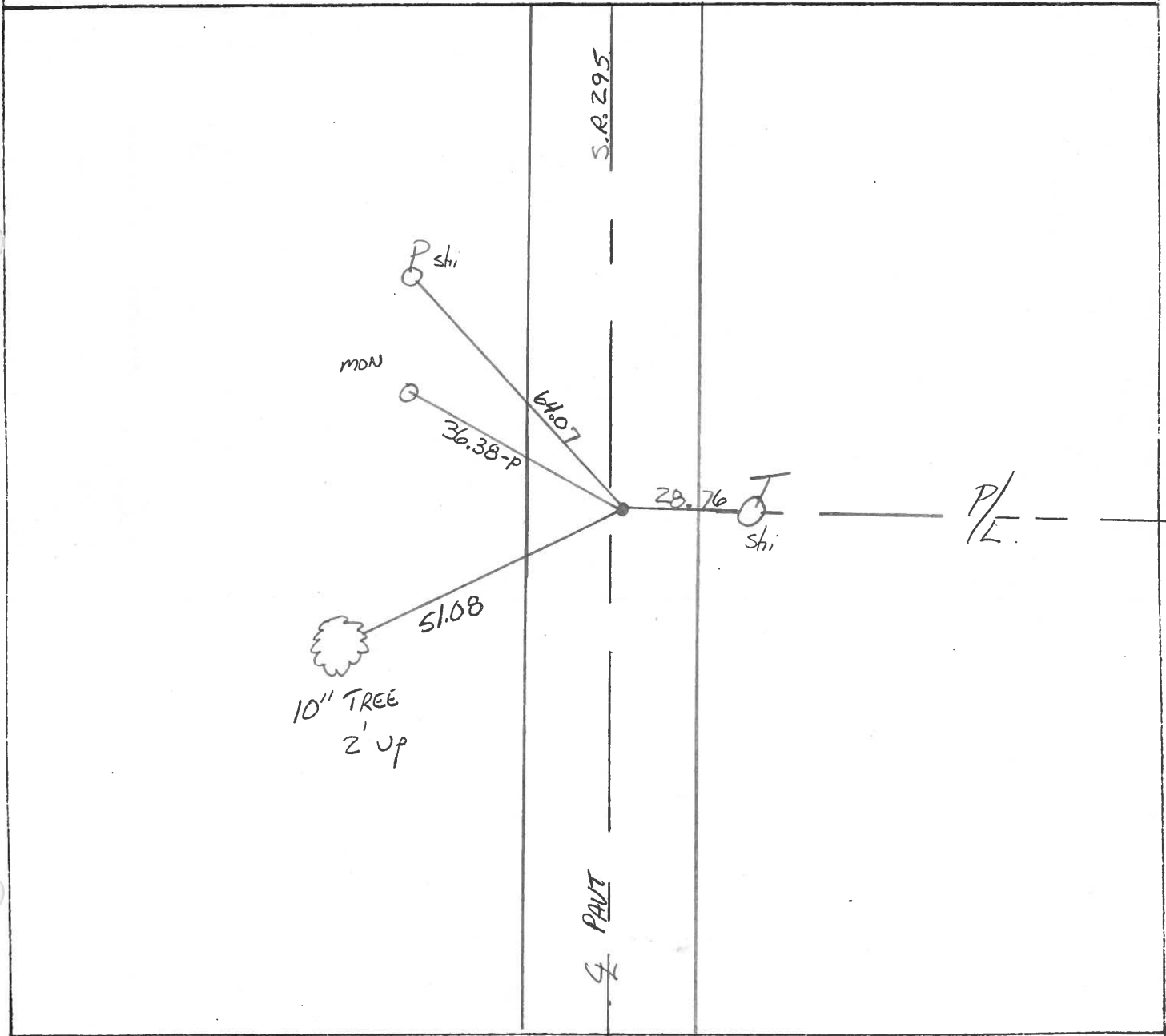
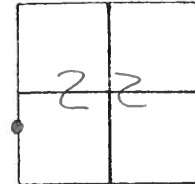
ON SURFACE - BELOW Yes

3-25-92

LEFT - ℄ PAV'T. - RIGHT 0.8

B.6 TO RT EDGE PAVEMENT

S.L.M. 425 + 45



County Lucas S.R. 295

Date 27 April 82

Township Swanton

Weather Cool

Section 22

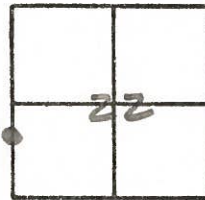
Temp. 42°

T. N, R. E

Personnel J. Stone

P. Newser

R. Michalak



REF. NO. 24B

