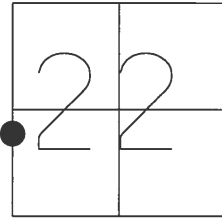


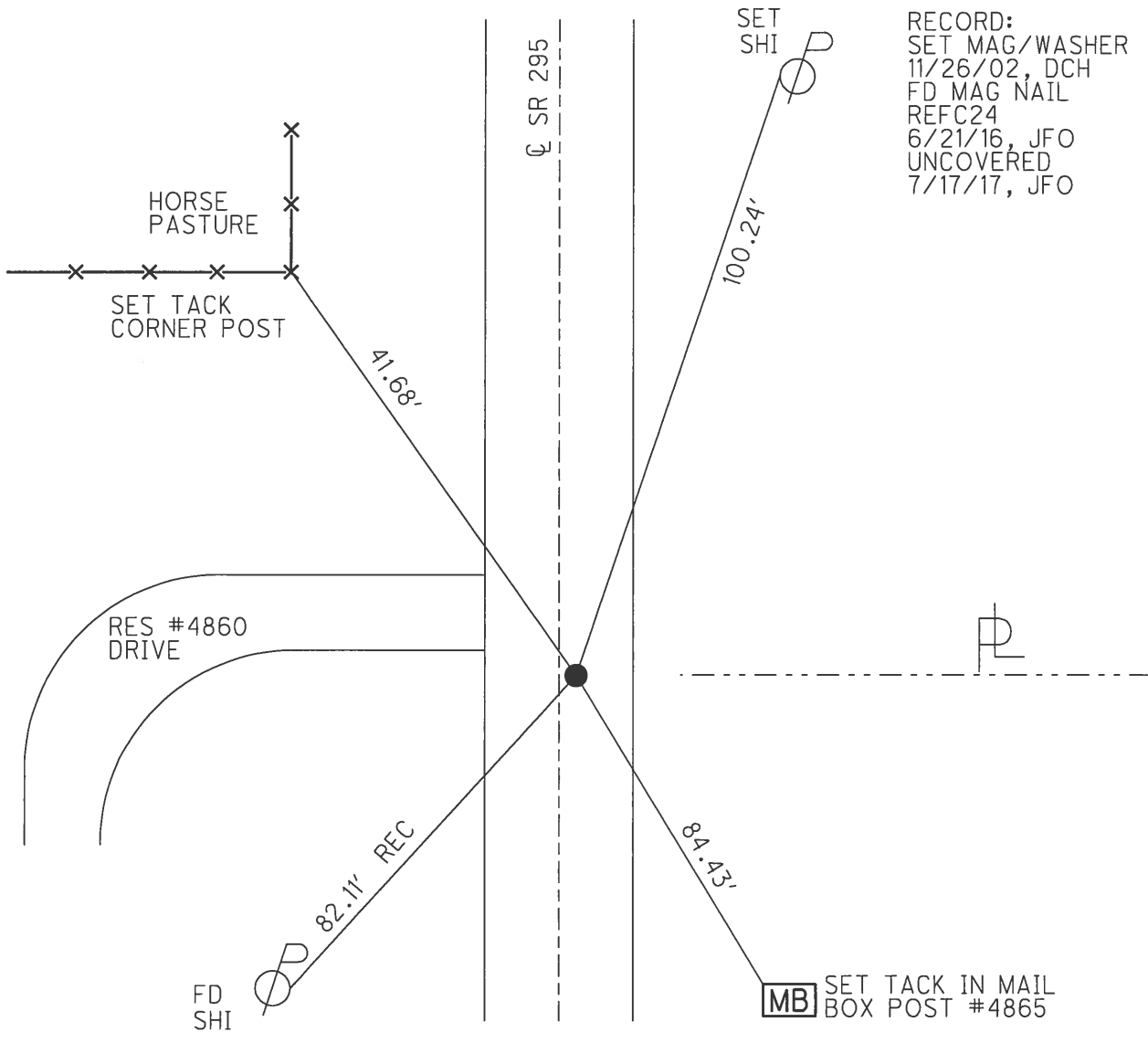
O.D.O.T. DISTRICT 2 SURVEY OFFICE (USE ONLY)

PERSONNEL	REFERENCE NO.	24C	SHEET	36	OF	45
NOTES	HOMAN	DATE	9/9/02	ROUTE	SR 295	
H.C.	HOMAN	WEATHER	SUNNY	COUNTY	LUCAS	
R.C.	BROWN	TEMP.	90°	TOWNSHIP	SWANTON	
				SECTION	22	
				T	7	N
				R	9	E

TYPE MONUMENT P.K. NAIL  
 ON SURFACE - ~~BELOW~~ ON  
~~LEFT~~ - CL PAV'T - RIGHT .5'  
11' TO LT EDGE PAVEMENT  
 S.L.M. 428+54



GRID: NORTHING: 689586.369 EASTING: 1605873.331



# O.D.O.T. DISTRICT 2 SURVEY OFFICE

PERSONNEL \_\_\_\_\_

REFERENCE NO. 24C

SHEET 36 OF 45

NOTES HOMAN

DATE 9-9-02

ROUTE S.R. 295

H.C. HOMAN

WEATHER SUNNY

COUNTY LUCAS

R.C. BROWN

TEMP. 90°

TOWNSHIP SWANTON

SECTION 22

T 7 N R 9 E

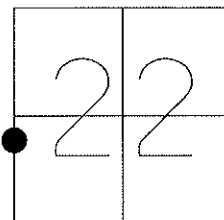
TYPE MONUMENT PK NAIL

ON SURFACE - ~~BELOW~~ ON

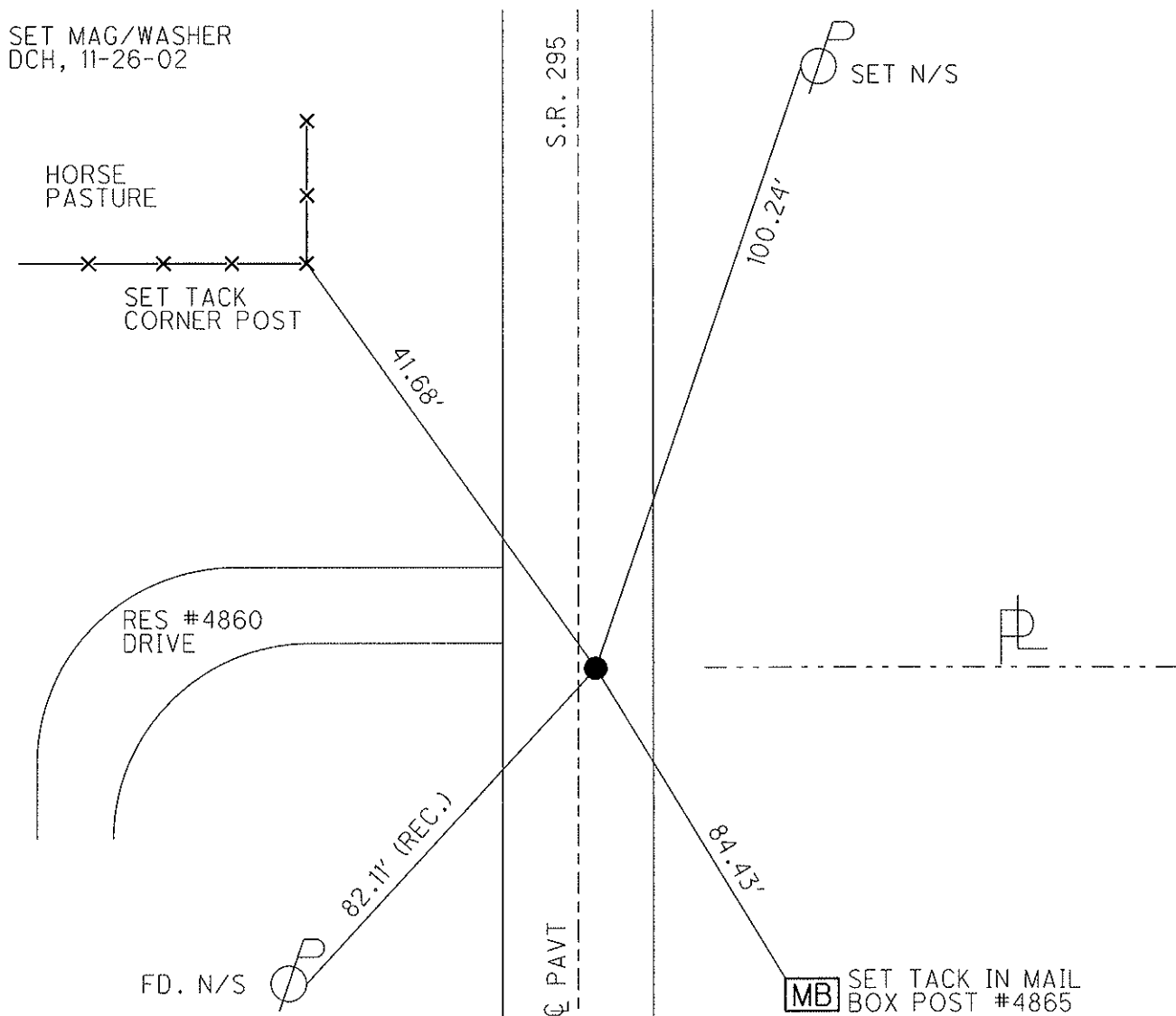
~~LEFT~~ - Q PAV'T - RIGHT .5'

11' TO LT. EDGE PAVEMENT

S.L.M. 428+54



SET MAG/WASHER  
DCH, 11-26-02



# O.D.O.T. DISTRICT 2 SURVEY OFFICE

PERSONNEL

REFERENCE NO. 24-C SHEET 28 OF 35

NOTES LOEHRKE

H.C. Curtis

R.C. Luce

DATE 8-5-91

WEATHER Clear

TEMP. +70

ROUTE S.P. 295

COUNTY LUCAS

TOWNSHIP SWANTON

SECTION 22

T 7 N R 9 E

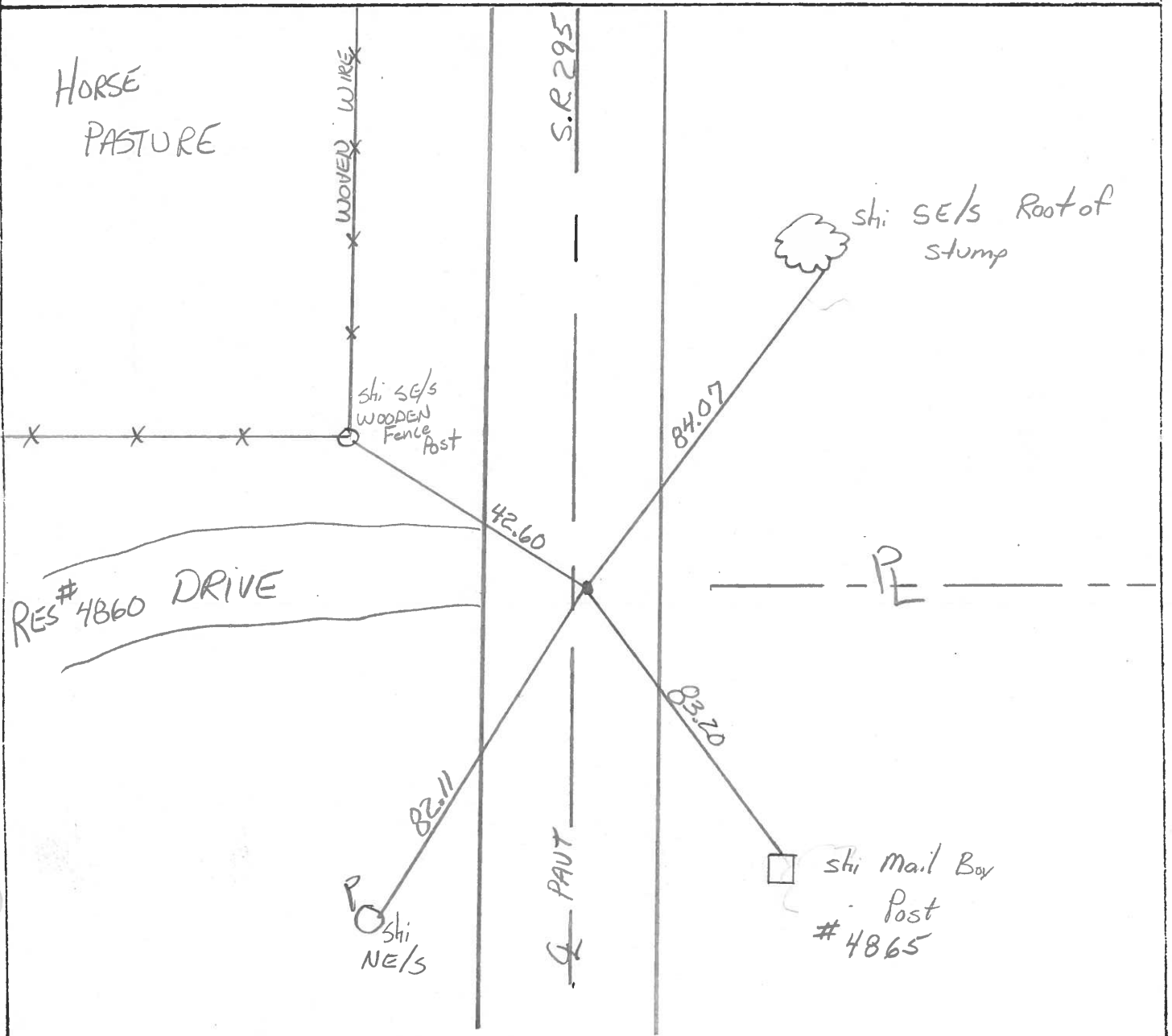
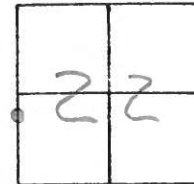
TYPE MONUMENT R.R. Spike

ON SURFACE - BELOW Yes

~~LEFT~~ - C PAV'T. - RIGHT 0.4

9.4 TO RT EDGE PAVEMENT

S.L.M. 428+54



County Lucas S.R. 295

Date 27 April 82

Township Swanton

Weather Cool

Section 22

Temp. 44°

T N, R E

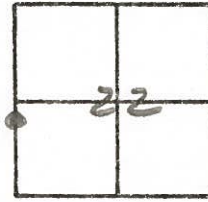
Personnel I. Stone

P. Neuse

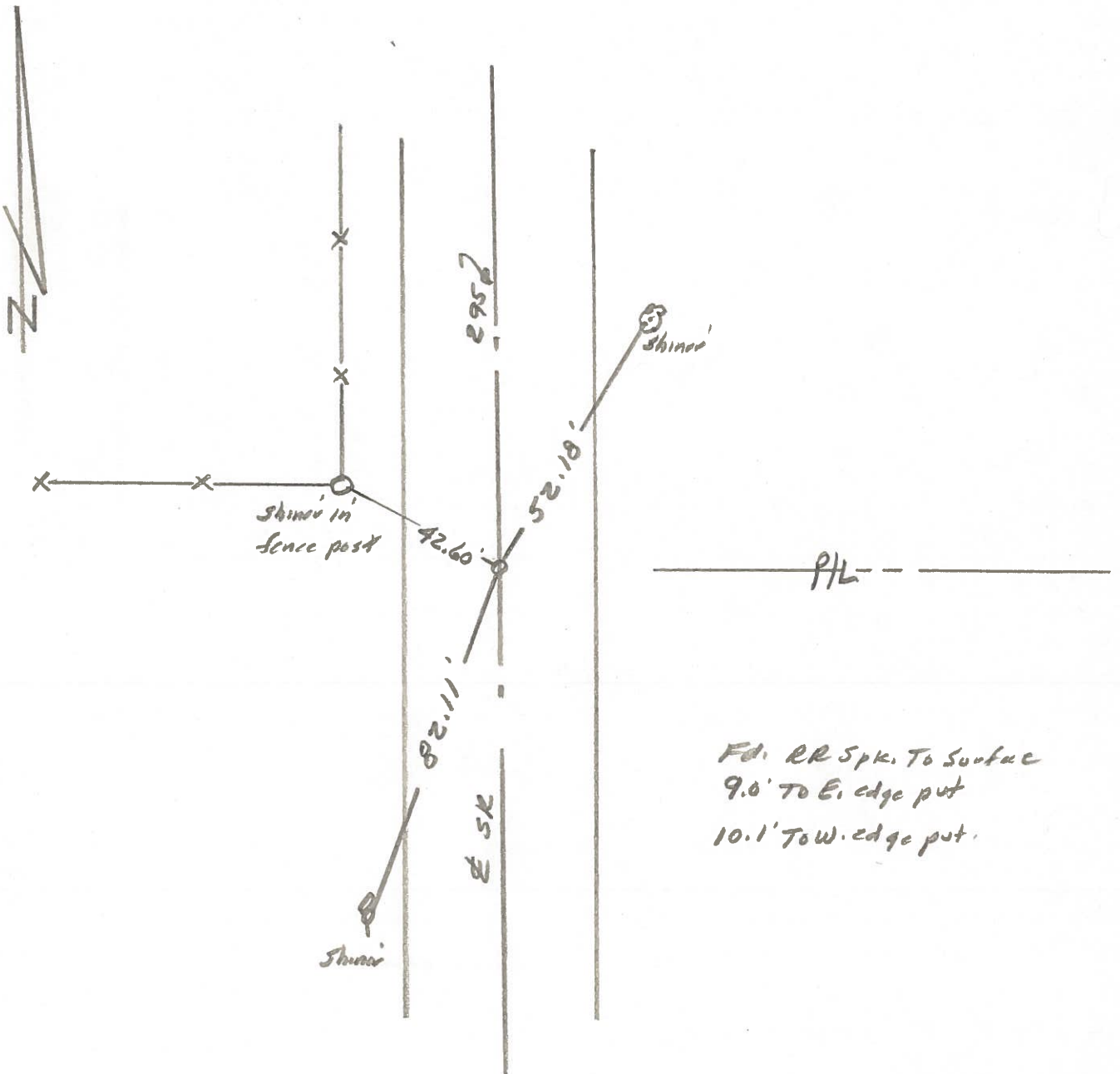
R. Michalak

\_\_\_\_\_

\_\_\_\_\_



REF. NO. 24C



Fd. RR Spk. To Surface  
 9.0' To E. edge put  
 10.1' To W. edge put.