

O.D.O.T. DISTRICT 2 SURVEY OFFICE (USE ONLY)

PERSONNEL \_\_\_\_\_ REFERENCE NO. 27 SHEET 39 OF 45

NOTES BROWN DATE 9/9/02 ROUTE SR 295

H.C. HOMAN WEATHER SUNNY COUNTY LUCAS

R.C. BROWN TEMP. 90° TOWNSHIP SWANTON

SECTION 15

T 7 N R 9 E

TYPE MONUMENT P.K. NAIL

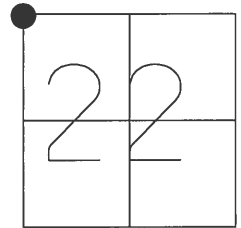
ON SURFACE - ~~BELOW~~ ON

LEFT - ☉ PAV'T - ~~RIGHT~~ ON

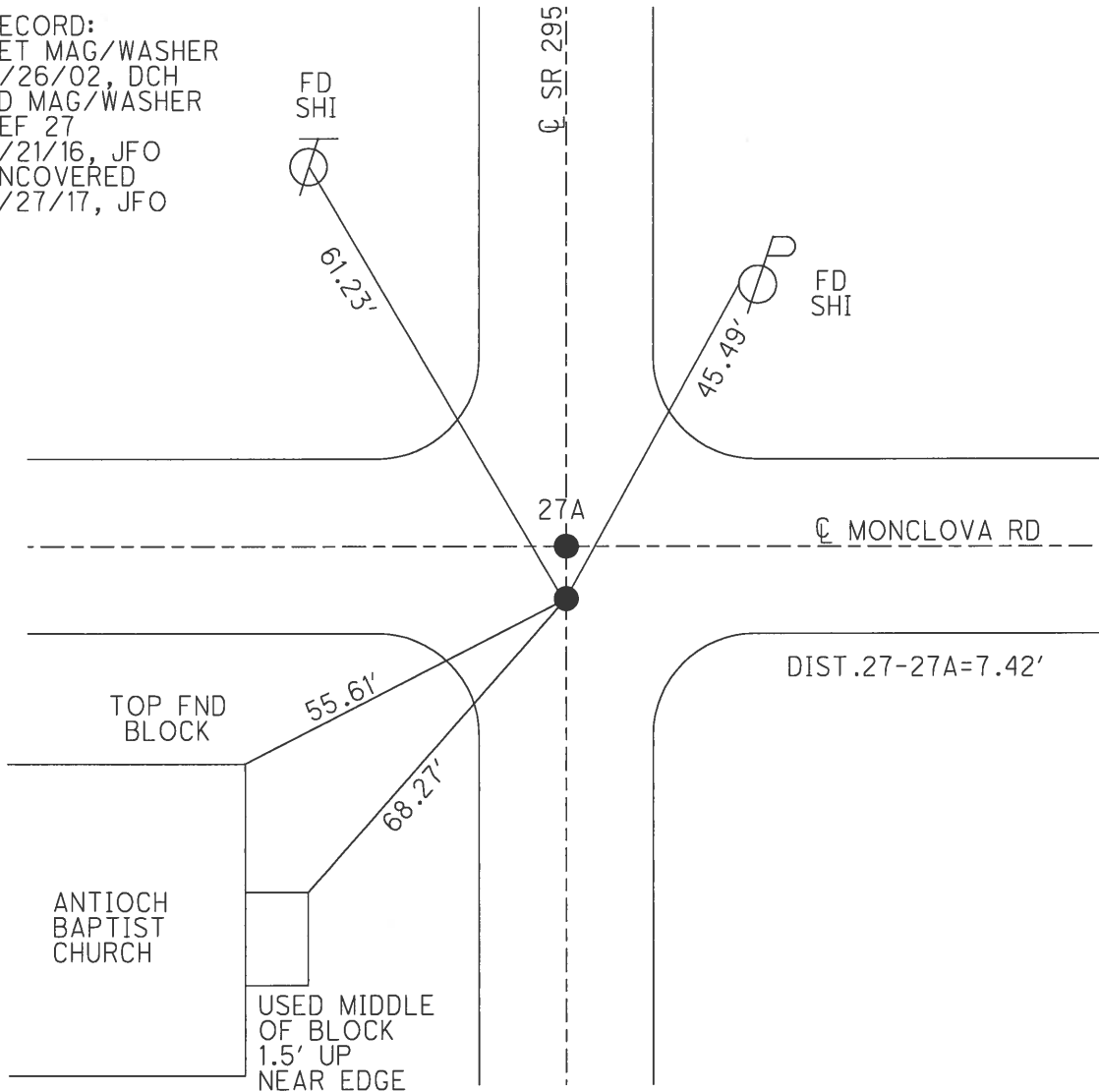
11' TO LT EDGE PAVEMENT

S.L.M. 458+82

GRID: NORTHING: 692614.038 EASTING: 1605893.288



RECORD:  
 SET MAG/WASHER  
 11/26/02, DCH  
 FD MAG/WASHER  
 REF 27  
 6/21/16, JFO  
 UNCOVERED  
 7/27/17, JFO



# O.D.O.T. DISTRICT 2 SURVEY OFFICE

PERSONNEL

REFERENCE NO. 27

SHEET 39 OF 45

NOTES BROWN

DATE 9-9-02

ROUTE S.R. 295

H.C. HOMAN

WEATHER SUNNY

COUNTY LUCAS

R.C. BROWN

TEMP. 90°

TOWNSHIP SWANTON

SECTION 15

T 7 N R 9 E

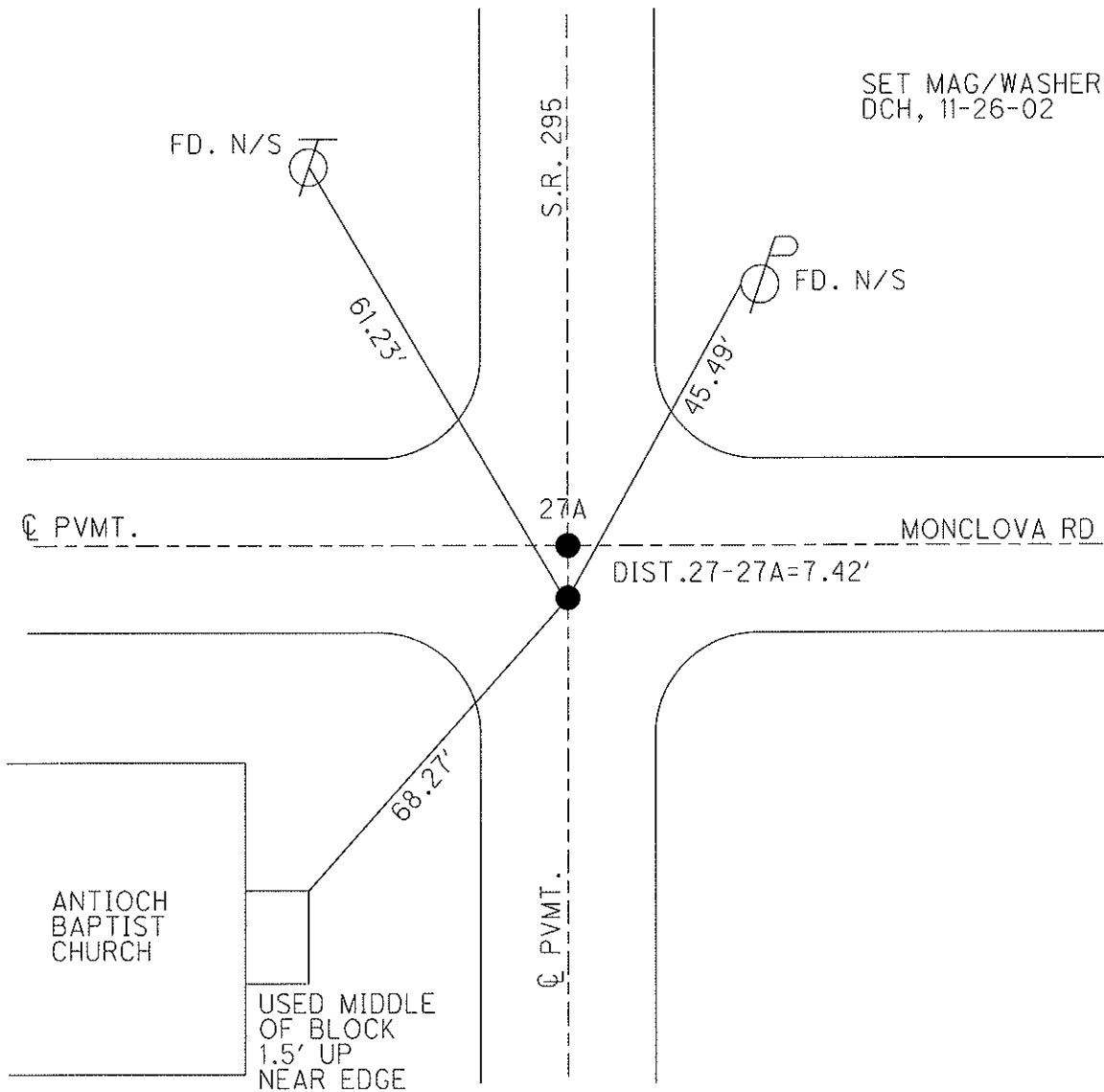
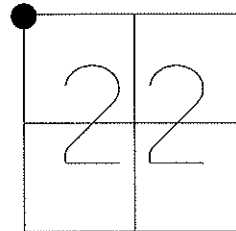
TYPE MONUMENT P.K.NAIL

ON SURFACE - ~~BELOW~~ ON

LEFT - Q PAV'T - RIGHT ON

11' TO LT. EDGE PAVEMENT

S.L.M. 458+82



O.D.O.T. DISTRICT 2 SURVEY OFFICE

PERSONNEL

REFERENCE NO. 27<sup>27A</sup>

SHEET 35 OF 40

NOTES BROWN  
 H.C. HOMAN  
 R.C. BROWN

DATE 9-9-02  
 WEATHER SUNNY  
 TEMP. 90

ROUTE S.R. 295  
 COUNTY LUCAS  
 TOWNSHIP SWANTON  
 SECTION 15

T 7 N R 9 E

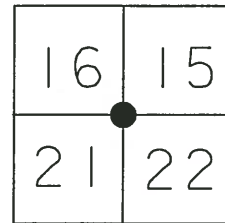
TYPE MONUMENT FD. PK IN CENTER OF AERIAL TARGET

ON SURFACE - BELOW YES

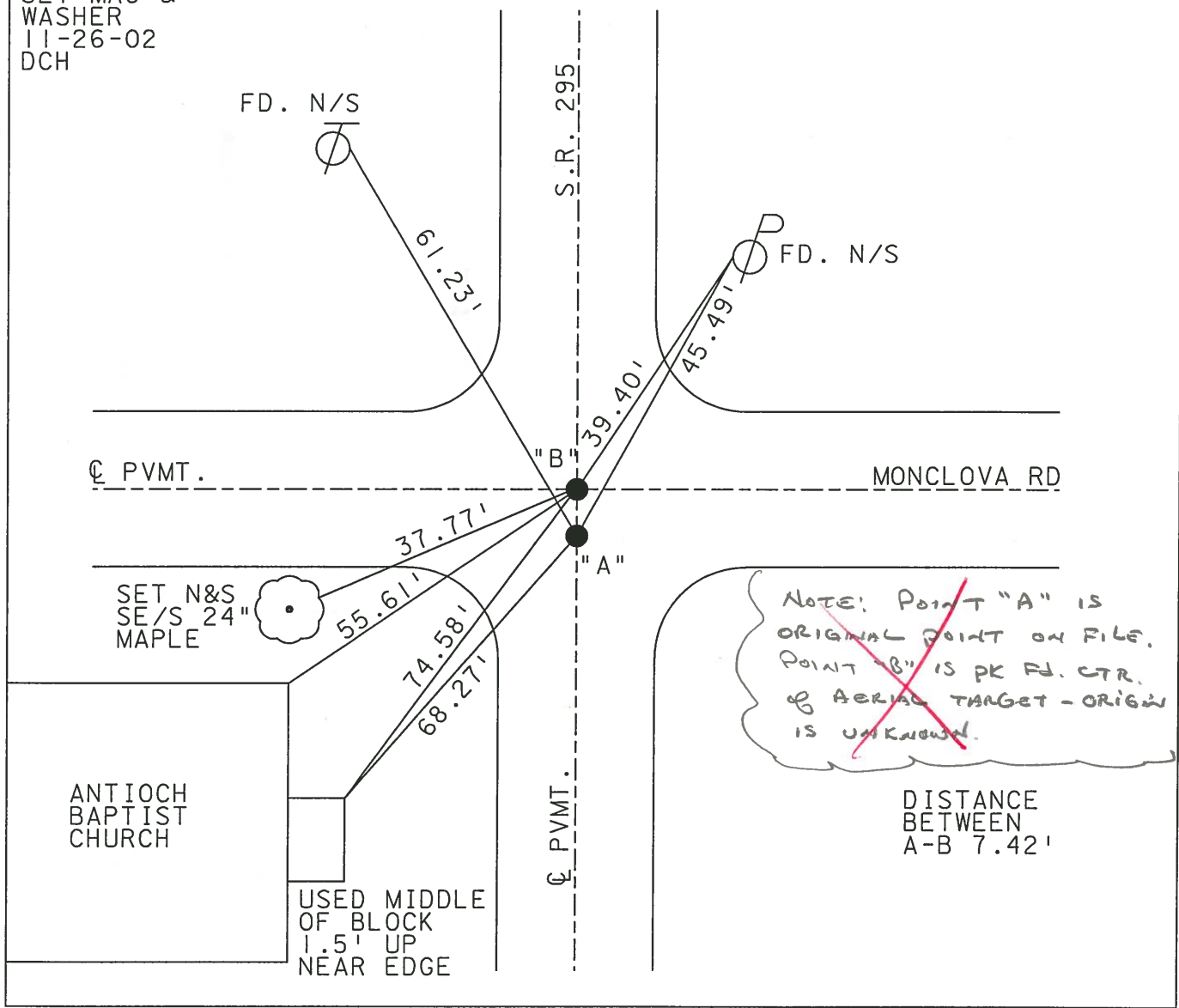
~~LEFT~~ - Q PAV'T - ~~RIGHT~~ YES

11' TO LT EDGE PAVEMENT

S.L.M. 458+82



SET MAG &  
 WASHER  
 11-26-02  
 DCH



~~NOTE: POINT "A" IS ORIGINAL POINT ON FILE. POINT "B" IS PK FD. CTR. OF AERIAL TARGET - ORIGIN IS UNKNOWN.~~

DISTANCE BETWEEN A-B 7.42'

County Lucas S. R. 295

Date 27 April 02

Township Swanton

Weather Cool

Section 15-16-21-22

Temp. 49°

T. N, R. E

Personnel L. Stone

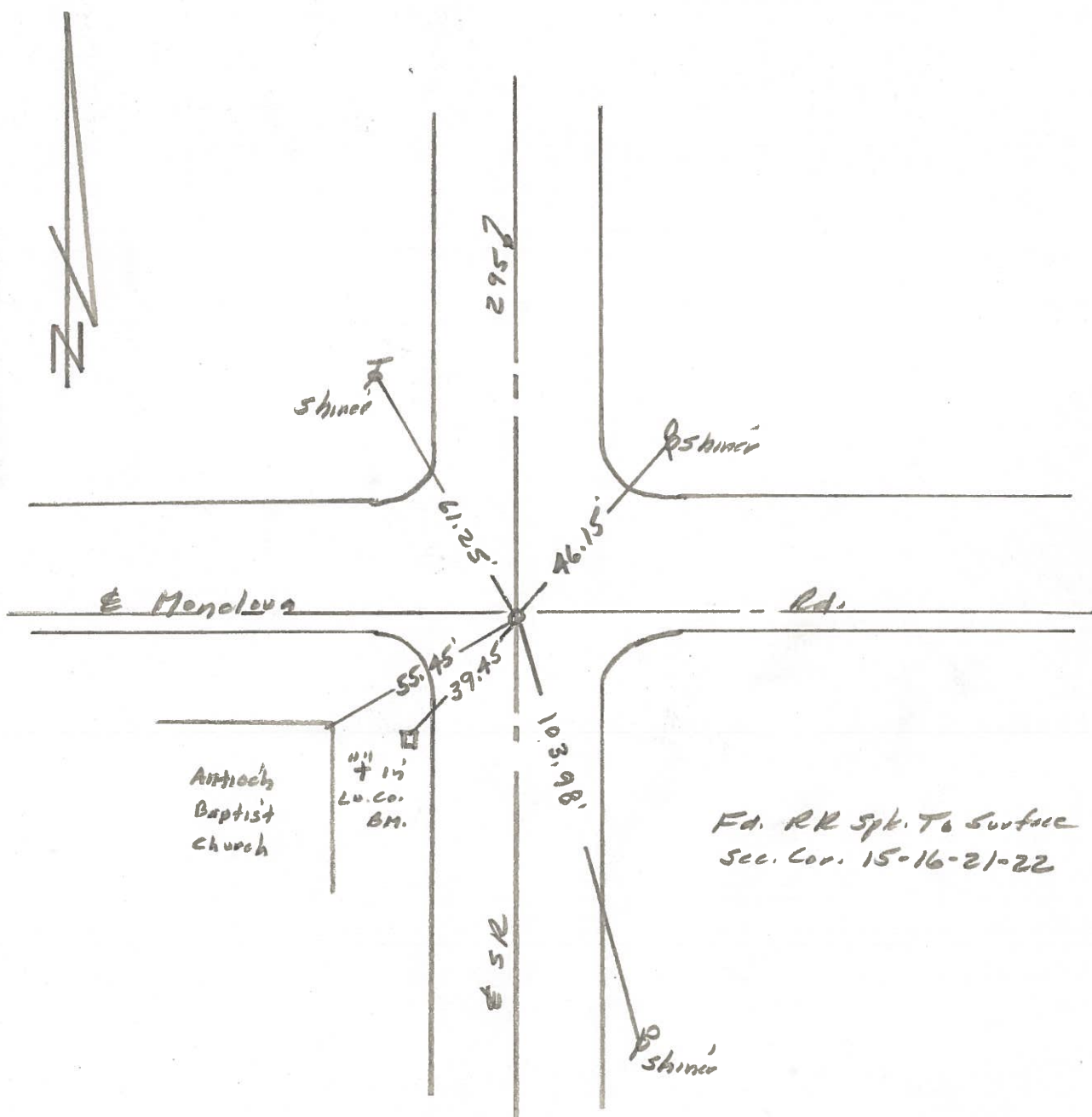
P. Newser

R. Michalek

16	15
21	22



REF. NO. 27



PERSONNEL	TITLE	PERSONNEL	TITLE	COUNTY	DATE
Stone	Notes			Lucas	12 June 68
Beck	Flag			S. R. # 295	WEATHER Fair
Michalak	Tape				TEMP. 76°
Schroder	Tape			SEC.	

DESCRIPTION References to Control Points JOB NO. \_\_\_\_\_  
 LEFT CENTER LINE RIGHT

