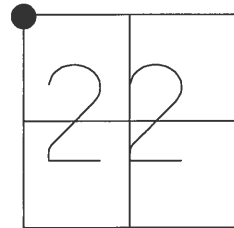


O.D.O.T. DISTRICT 2 SURVEY OFFICE (USE ONLY)

PERSONNEL _____ REFERENCE NO. 27 A SHEET 40 OF 45

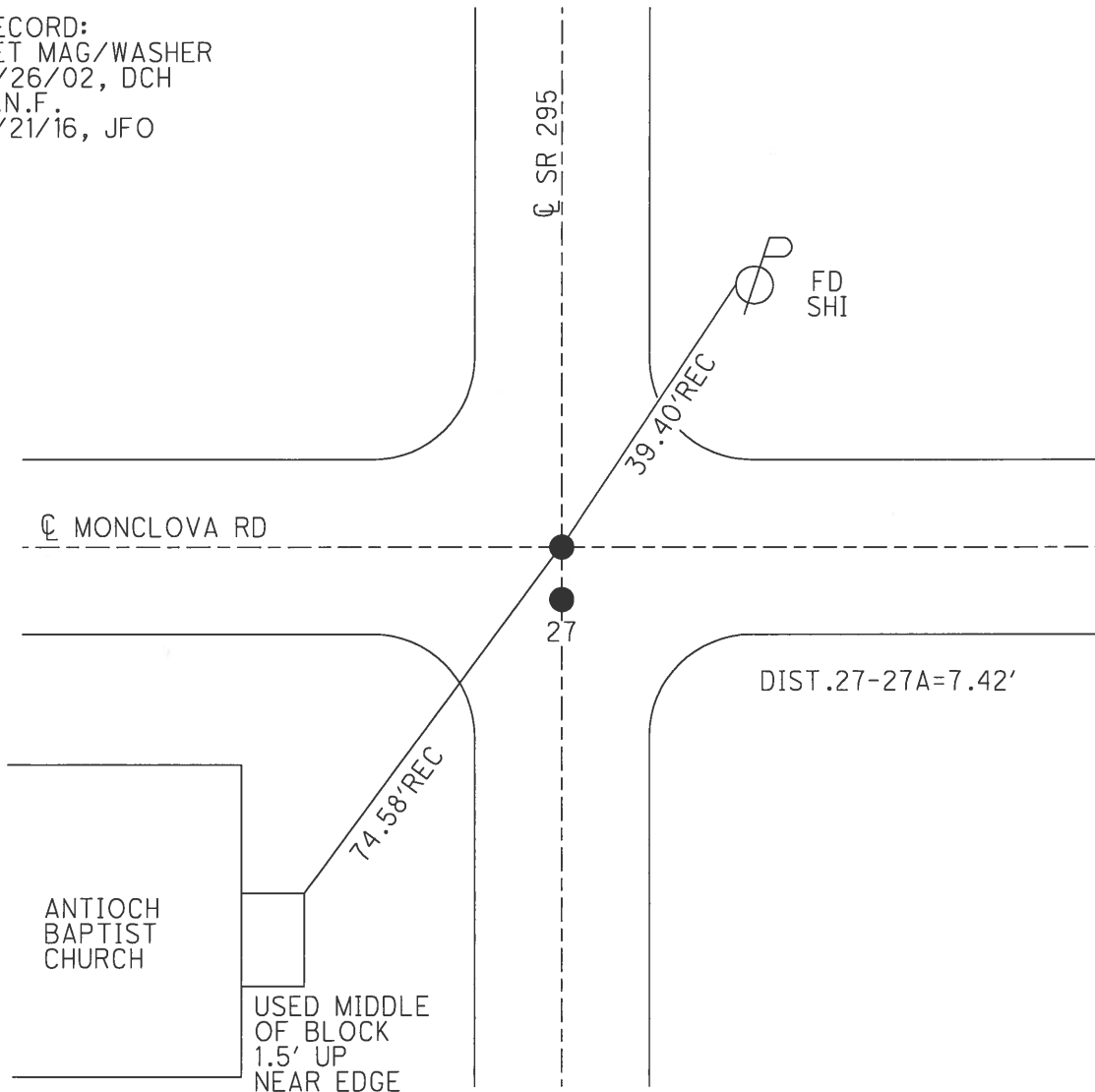
NOTES BROWN DATE 9/9/02 ROUTE SR 295
 H.C. HOMAN WEATHER SUNNY COUNTY LUCAS
 R.C. BROWN TEMP. 90° TOWNSHIP SWANTON
 _____ SECTION 15
 _____ T 7 N R 9 E

TYPE MONUMENT P.K.NAIL
 ON SURFACE - ~~BELOW~~ _____ ON _____
 LEFT - ☉ PAV'T - RIGHT _____ ON _____
11' TO LT _____ EDGE PAVEMENT
 S.L.M. 458+89



GRID: NORTHING: _____ EASTING: _____

RECORD:
 SET MAG/WASHER
 11/26/02, DCH
 D.N.F.
 6/21/16, JFO



O.D.O.T. DISTRICT 2 SURVEY OFFICE

PERSONNEL

REFERENCE NO. 27 A

SHEET 40 OF 45

NOTES BROWN

DATE 9-9-02

ROUTE S.R. 295

H.C. HOMAN

WEATHER SUNNY

COUNTY LUCAS

R.C. BROWN

TEMP. 90°

TOWNSHIP SWANTON

SECTION 15

T 7 N R 9 E

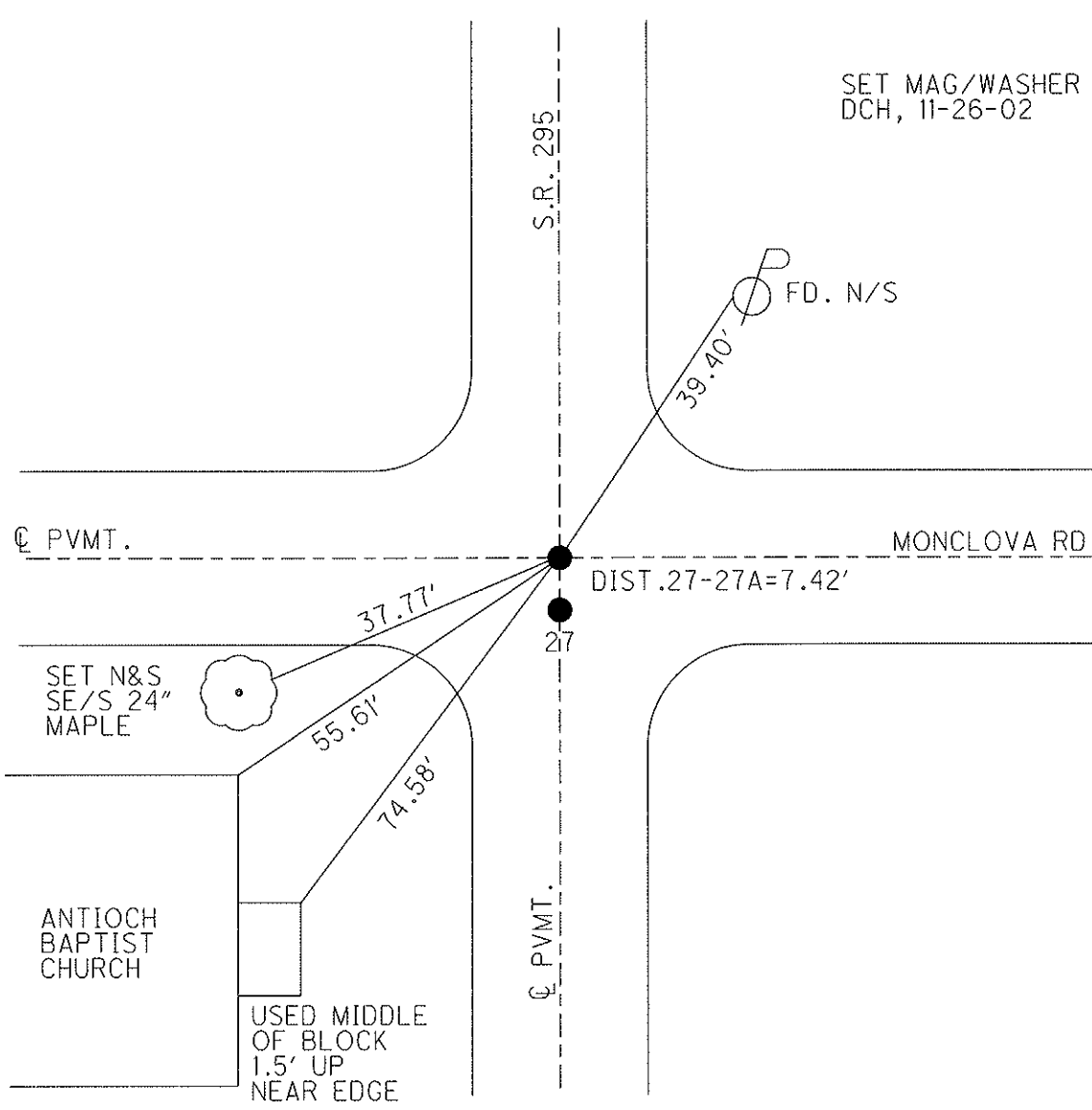
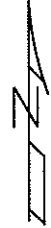
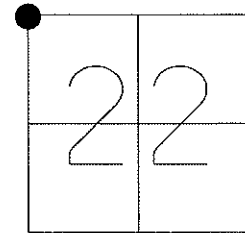
TYPE MONUMENT P.K.NAIL

ON SURFACE - ~~BELOW~~ ON

LEFT - ☉ PAV'T - RIGHT ON

11' TO LT. EDGE PAVEMENT

S.L.M. 458+89



O.D.O.T. DISTRICT 2 SURVEY OFFICE

PERSONNEL

REFERENCE NO. 27 ^{27A}

SHEET 35 OF 40

NOTES BROWN

DATE 9-9-02

ROUTE S.R. 295

H.C. HOMAN

WEATHER SUNNY

COUNTY LUCAS

R.C. BROWN

TEMP. 90

TOWNSHIP SWANTON

SECTION 15

T 7 N R 9 E

TYPE MONUMENT FD. PK IN CENTER OF AERIAL TARGET

ON SURFACE - BELOW YES

~~LEFT - Q~~ PAV'T - ~~RIGHT~~ YES

11' TO LT EDGE PAVEMENT

S.L.M. 458+82

16	15
21	22



SET MAG &
WASHER
11-26-02
DCH

