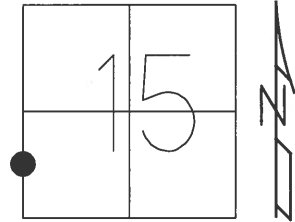


O.D.O.T. DISTRICT 2 SURVEY OFFICE (USE ONLY)

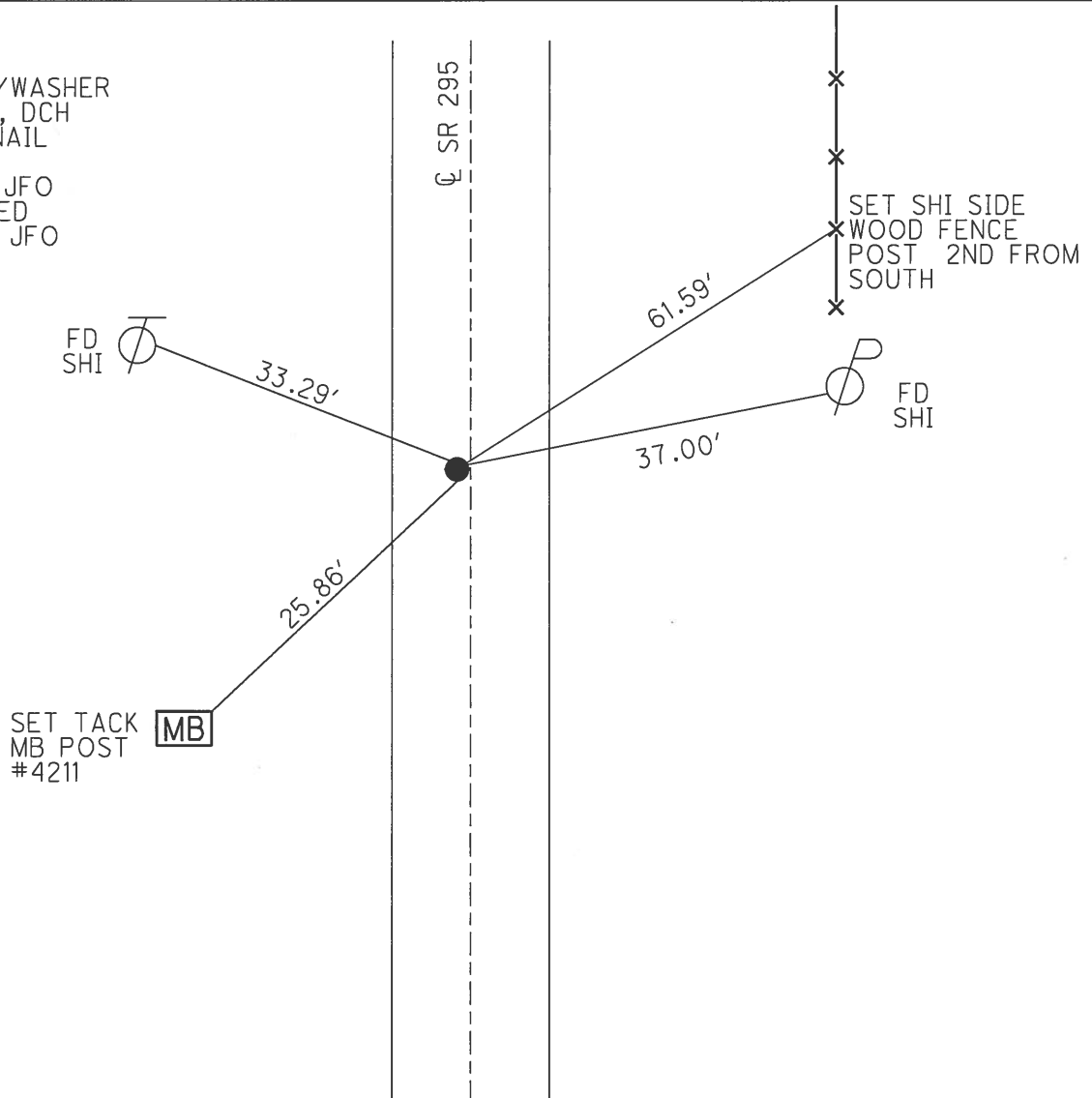
PERSONNEL _____ REFERENCE NO. 27 B SHEET 41 OF 45
 NOTES BROWN DATE 9/9/02 ROUTE SR 295
 H.C. HOMAN WEATHER SUNNY COUNTY LUCAS
 R.C. BROWN TEMP. 90° TOWNSHIP SWANTON
 _____ SECTION 15
 _____ T 7 N R 9 E

TYPE MONUMENT P.K. NAIL
 ON SURFACE - ~~BELOW~~ ON
 LEFT - CL PAV'T - ~~RIGHT~~ 1'
10' TOLT EDGE PAVEMENT
 S.L.M. 472+09



GRID: NORTHING: 693940.698 EASTING: 1605917.807

RECORD:
 SET MAG/WASHER
 11/26/02, DCH
 FD MAG NAIL
 REFB27
 6/21/16, JFO
 UNCOVERED
 7/27/17, JFO



O.D.O.T. DISTRICT 2 SURVEY OFFICE

PERSONNEL

REFERENCE NO. 27 B

SHEET 41 OF 45

NOTES BROWN

DATE 9-9-02

ROUTE S.R. 295

H.C. HOMAN

WEATHER SUNNY

COUNTY LUCAS

R.C. BROWN

TEMP. 90°

TOWNSHIP SWANTON

SECTION 15

T 7 N R 9 E

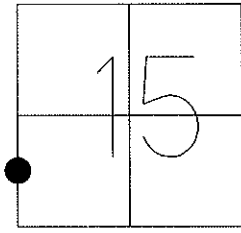
TYPE MONUMENT PK NAIL

ON SURFACE - ~~BELOW~~ ON

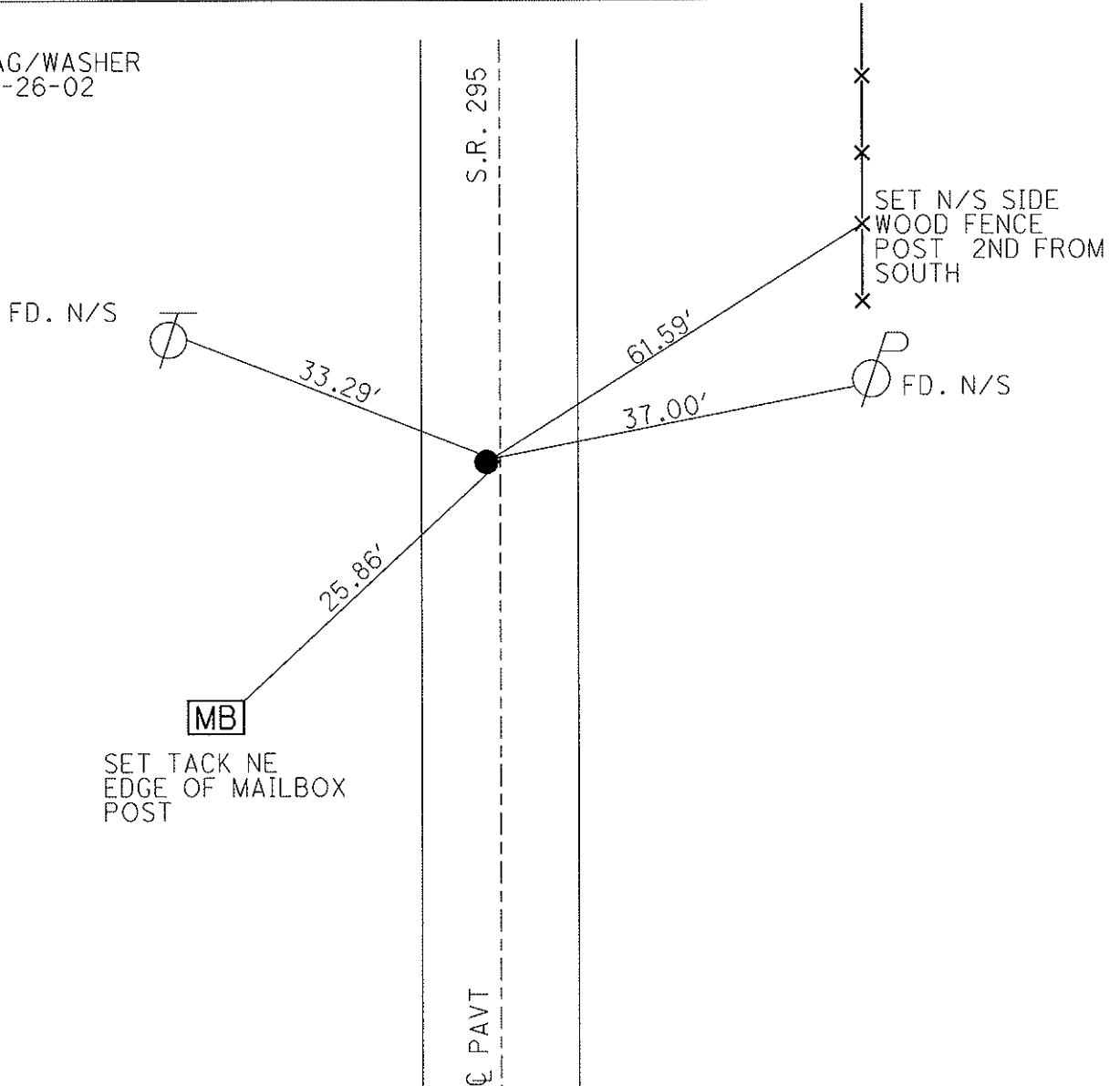
LEFT - Q PAV'T - ~~RIGHT~~ 1'

10' TO LT EDGE PAVEMENT

S.L.M. 472+09



SET MAG/WASHER
DCH, 11-26-02



O.D.O.T. DISTRICT 2 SURVEY OFFICE

PERSONNEL

REFERENCE NO. 27-A

SHEET 32 OF 35

NOTES LOHRKE

H.C. RIPALÉ

R.C. GEYMAN

DATE 8-2-91

WEATHER Pt CLOUDY

TEMP. +87

ROUTE S.R. 295

COUNTY LUCAS

TOWNSHIP SWANTON

SECTION 15

T 7 N R 9 E

TYPE MONUMENT R.R. Spike Set P. K./WASHER

ON SURFACE - ~~BELOW~~ Yes

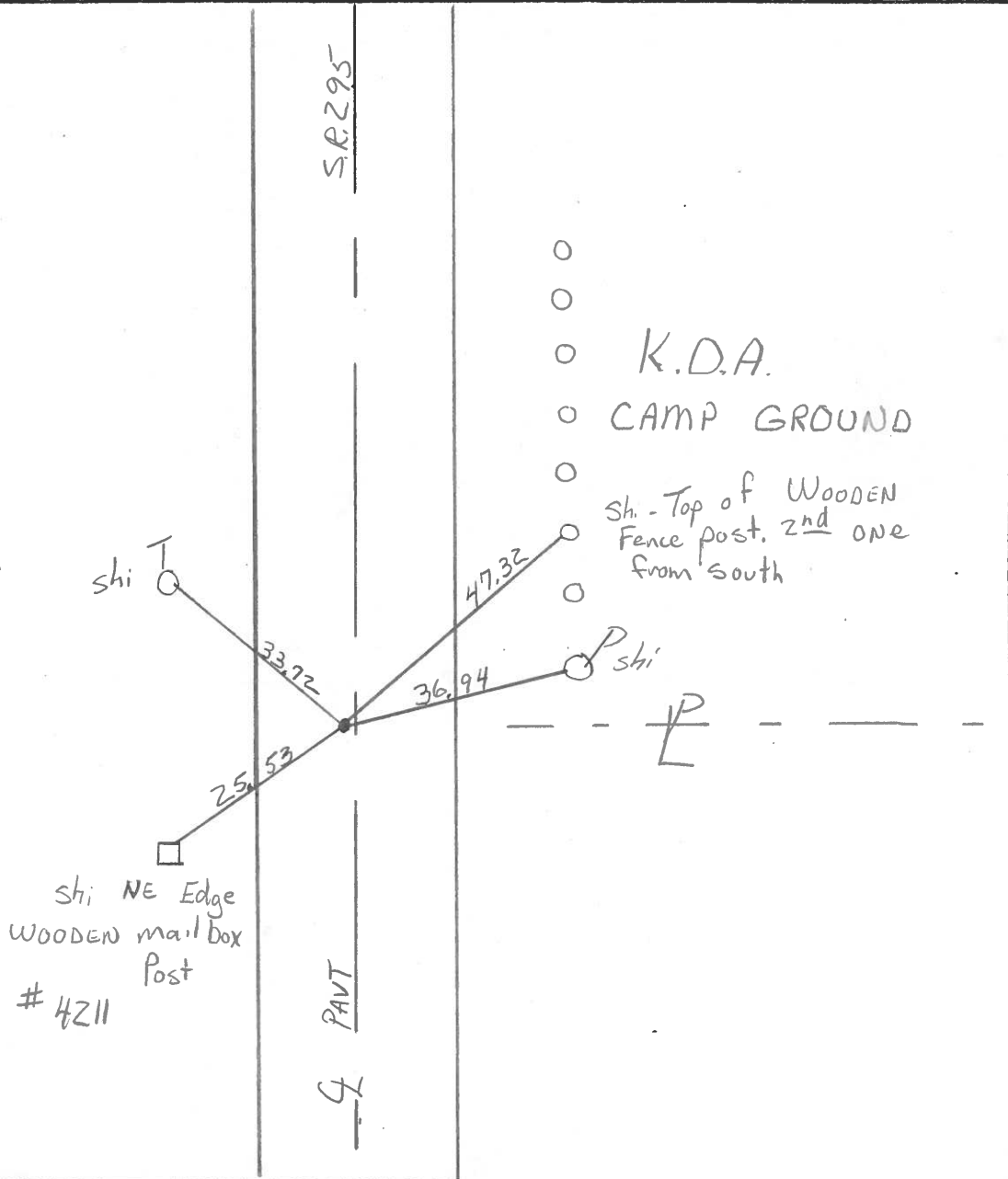
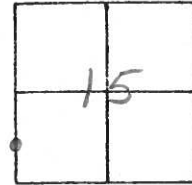
LEFT- & PAV'T. - ~~RIGHT~~ 1.1'

8.1 TO Lt EDGE PAVEMENT

S.L.M. 472 toq

3-25-92

27B



County Lucas S.R. 295

Date 27 April 82

Township Swanton

Weather Cool

Section 15

Temp. 490

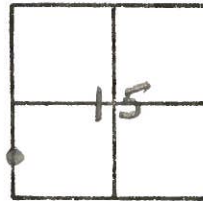
T_N, R_E

Personnel L. Stone

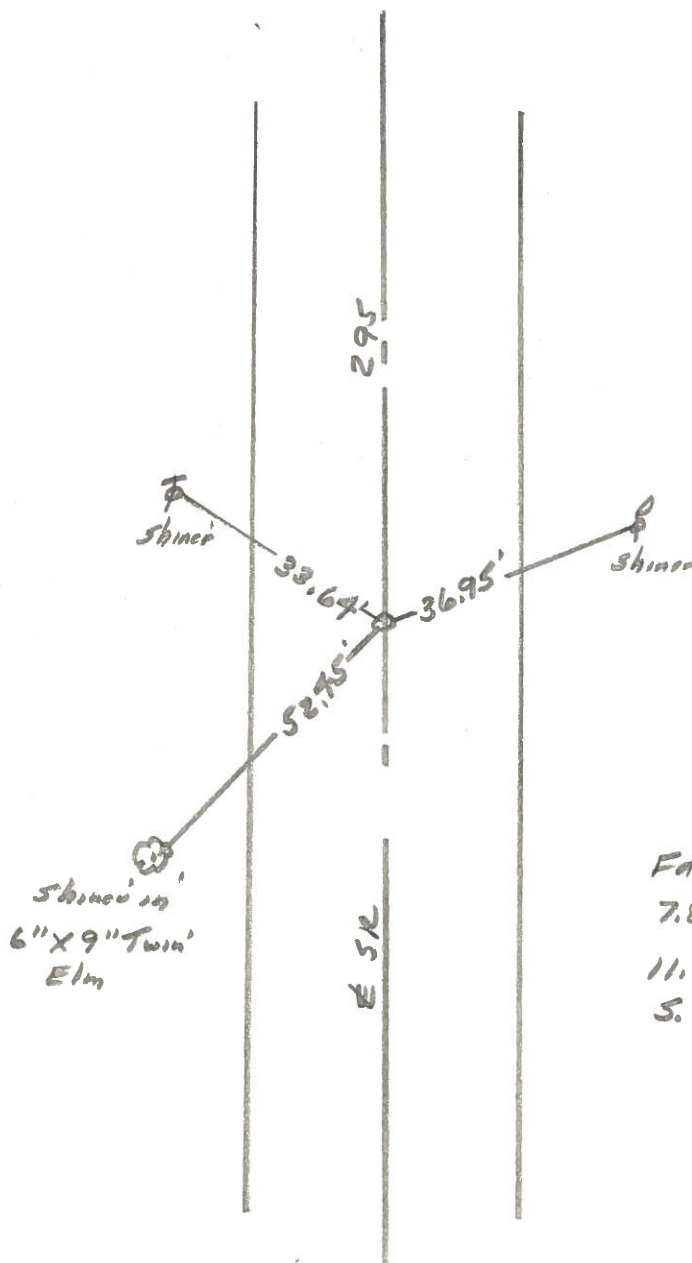
P. Neuser

R. Michalak

27B



REF. NO. 27A



Fd. RR Sp. To Surface
 7.8' To W. edge put,
 11.1' To E. edge put.
 S. P/L K.O.A Comp Ground