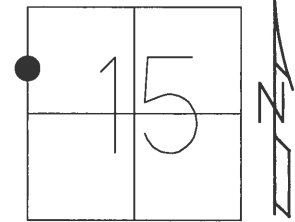


O.D.O.T. DISTRICT 2 SURVEY OFFICE (USE ONLY)

PERSONNEL _____ REFERENCE NO. 28 A SHEET 43 OF 45

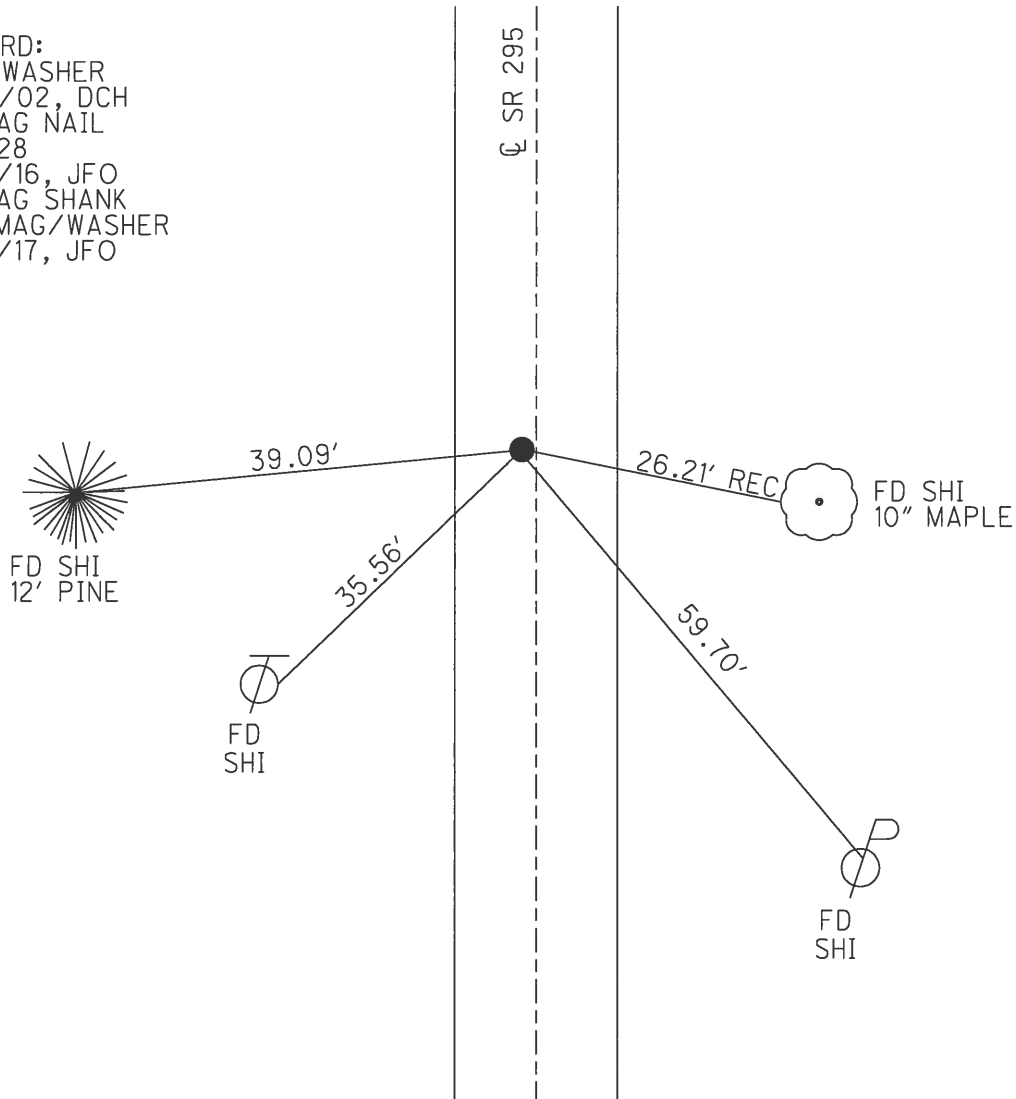
NOTES BROWN DATE 9/9/02 ROUTE SR 295
 H.C. HOMAN WEATHER SUNNY COUNTY LUCAS
 R.C. BROWN TEMP. 87° TOWNSHIP SWANTON
 _____ SECTION 15
 _____ T 7 N R 9 E

TYPE MONUMENT P.K. SHANK
 ON SURFACE - ~~BELOW~~ _____ ON _____
 LEFT - ☉ PAV'T - ~~RIGHT~~ 1.2'
9.8' TO LT EDGE PAVEMENT
 S.L.M. 495+36



GRID: NORTHING: 696266.773 EASTING: 1605952.037

RECORD:
 MAG/WASHER
 11/26/02, DCH
 FD MAG NAIL
 REFA28
 6/22/16, JFO
 FD MAG SHANK
 SET MAG/WASHER
 7/27/17, JFO



O.D.O.T. DISTRICT 2 SURVEY OFFICE

PERSONNEL

REFERENCE NO. 28 A

SHEET 43 OF 45

NOTES BROWN

DATE 9-9-02

ROUTE S.R. 295

H.C. HOMAN

WEATHER SUNNY

COUNTY LUCAS

R.C. BROWN

TEMP. 87°

TOWNSHIP SWANTON

SECTION 15

T 7 N R 9 E

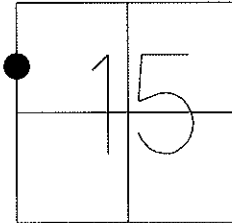
TYPE MONUMENT PK SHANK

ON SURFACE - ~~BELOW~~ ON

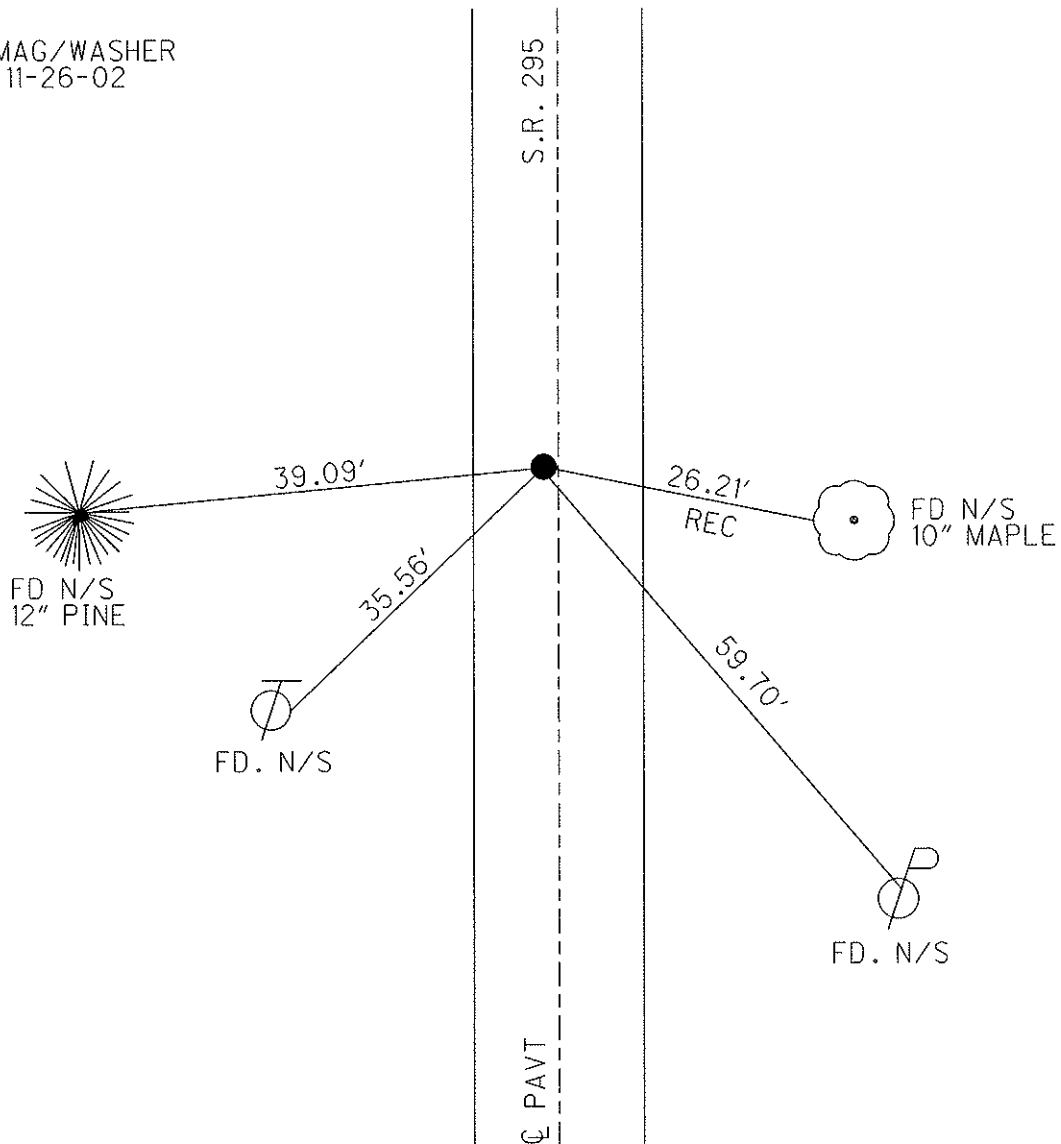
LEFT - Q PAV'T - ~~RIGHT~~ 1.2'

9.8 TO LT EDGE PAVEMENT

S.L.M. 495+36



SET MAG/WASHER
DCH, 11-26-02



O.D.O.T. DISTRICT 2 SURVEY OFFICE

PERSONNEL

REFERENCE NO. Z8-A

SHEET 34 OF 35

NOTES LOEHRKE

H.C. RIPPLE

R.C. GEYMAN

DATE 8-2-91

WEATHER Pt CLOUDY

TEMP. +85

ROUTE S.R. 295

COUNTY LUCAS

TOWNSHIP SWANTON

SECTION 15

T 7 N R 9 E

TYPE MONUMENT R.R. Spike

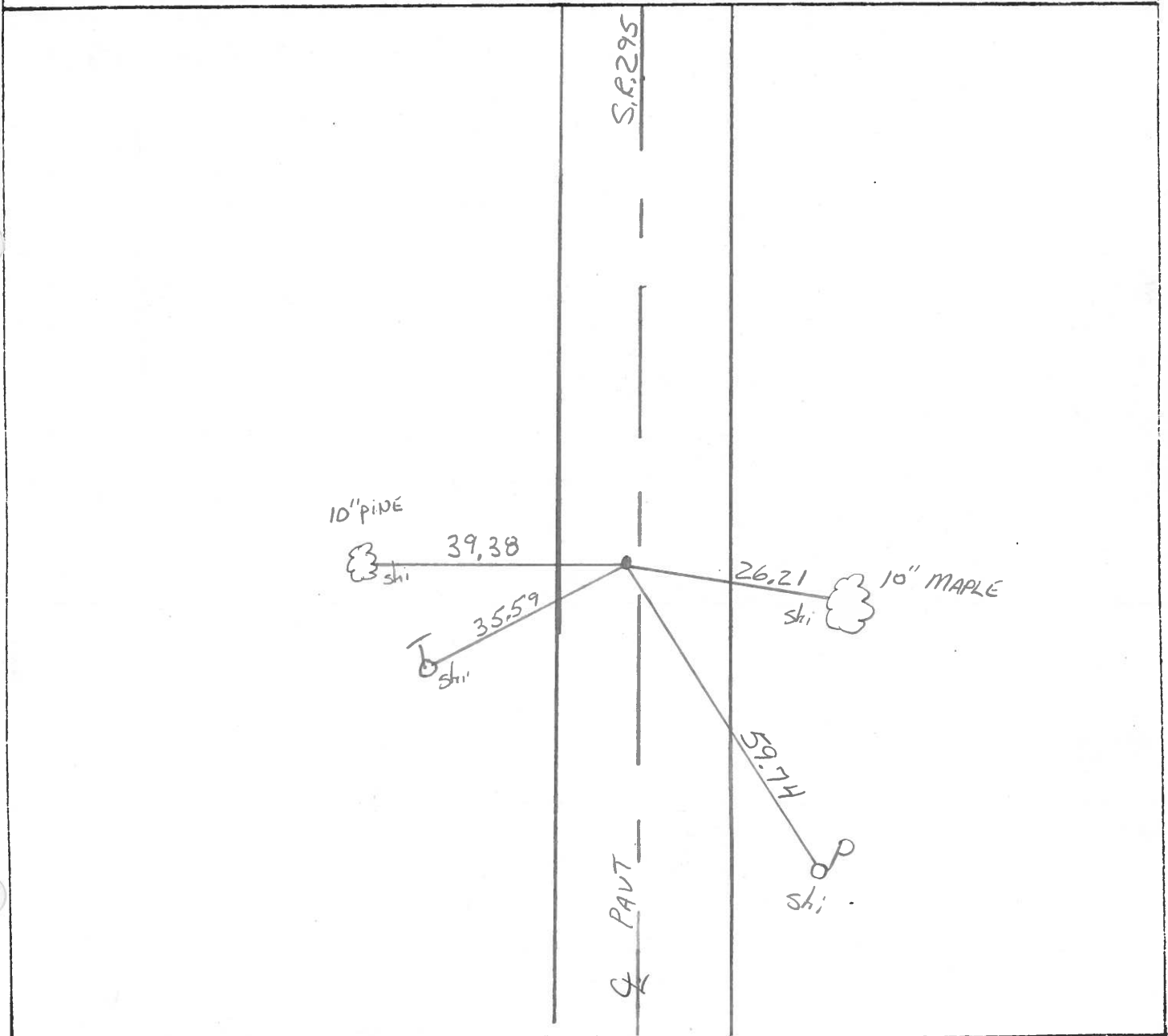
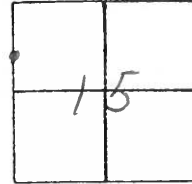
Set P.K./WASHER
3-26-92

ON SURFACE - BELOW Yes

LEFT-☉ PAV'T. - RIGHT 1.2

0.3 TO Lt EDGE PAVEMENT

S.L.M. 490 +36



County Lucas S.R. 295

Date 27 April 02

Township Swanton

Weather Cool

Section 15

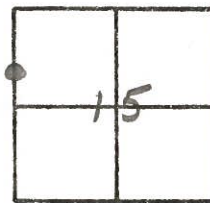
Temp. 51°

T, N, R, E

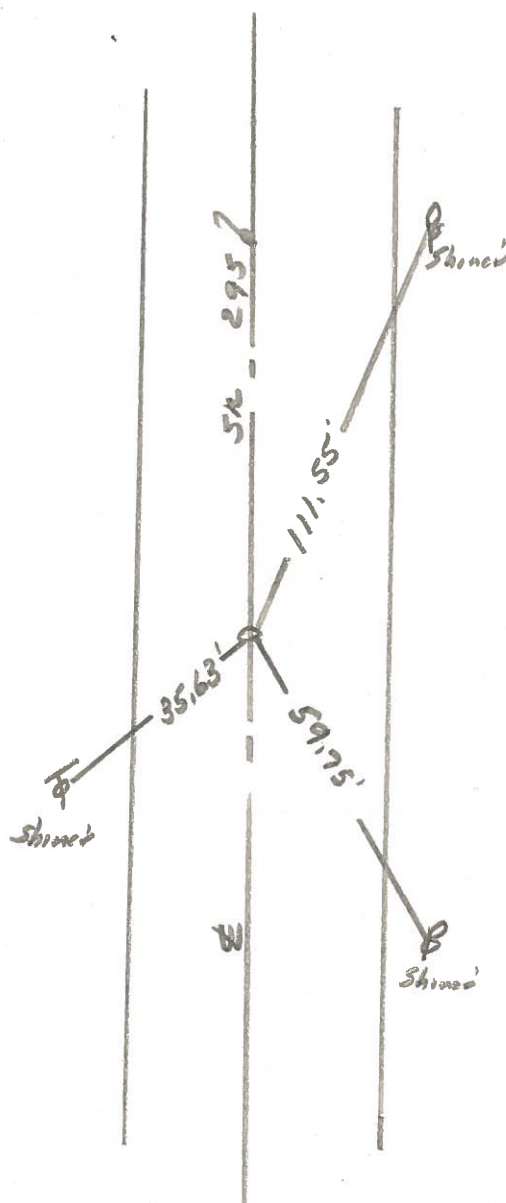
Personnel J. Stone

P. Neuser

R. Michalak



REF NO. 28A



Fd. RR Spt. To Surface
 8.2' To W. edge put
 10.9' To E. edge put.