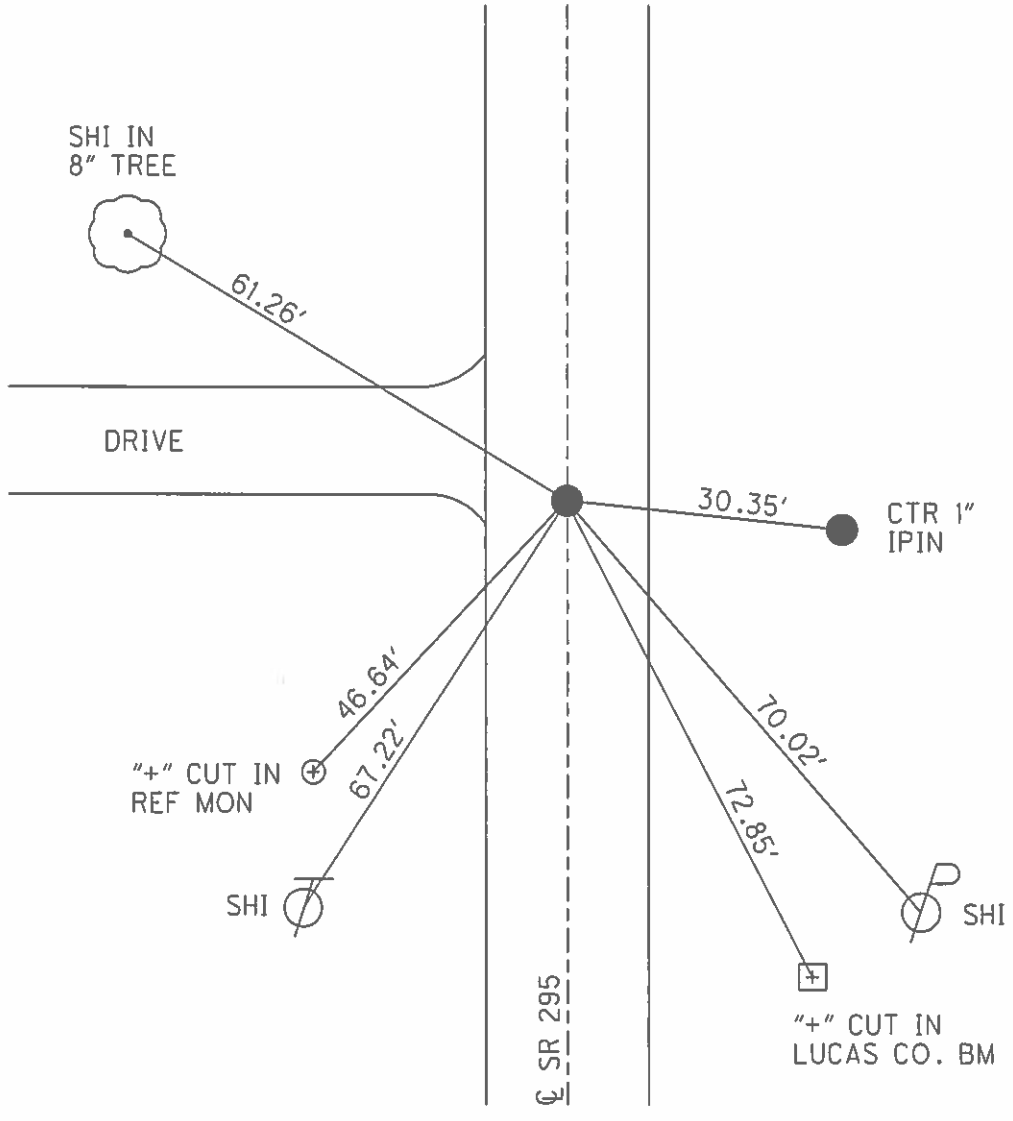
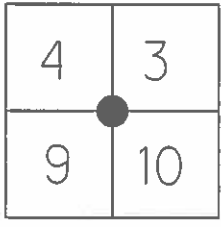


O.D.O.T. DISTRICT 2 SURVEY OFFICE (USE ONLY)

PERSONNEL \_\_\_\_\_ REFERENCE NO. 29 SHEET 1 OF 24  
 NOTES STONE \_\_\_\_\_ DATE 5/6/86 ROUTE SR 295  
 H.C. CURTIS \_\_\_\_\_ WEATHER CLOUDY COUNTY LUCAS  
 R.C. HOUSEHOLDER \_\_\_\_\_ TEMP. 75° TOWNSHIP SWANTON  
 MICHALAK \_\_\_\_\_ SECTION 3,4,9,10  
 T 7 N R 9 S

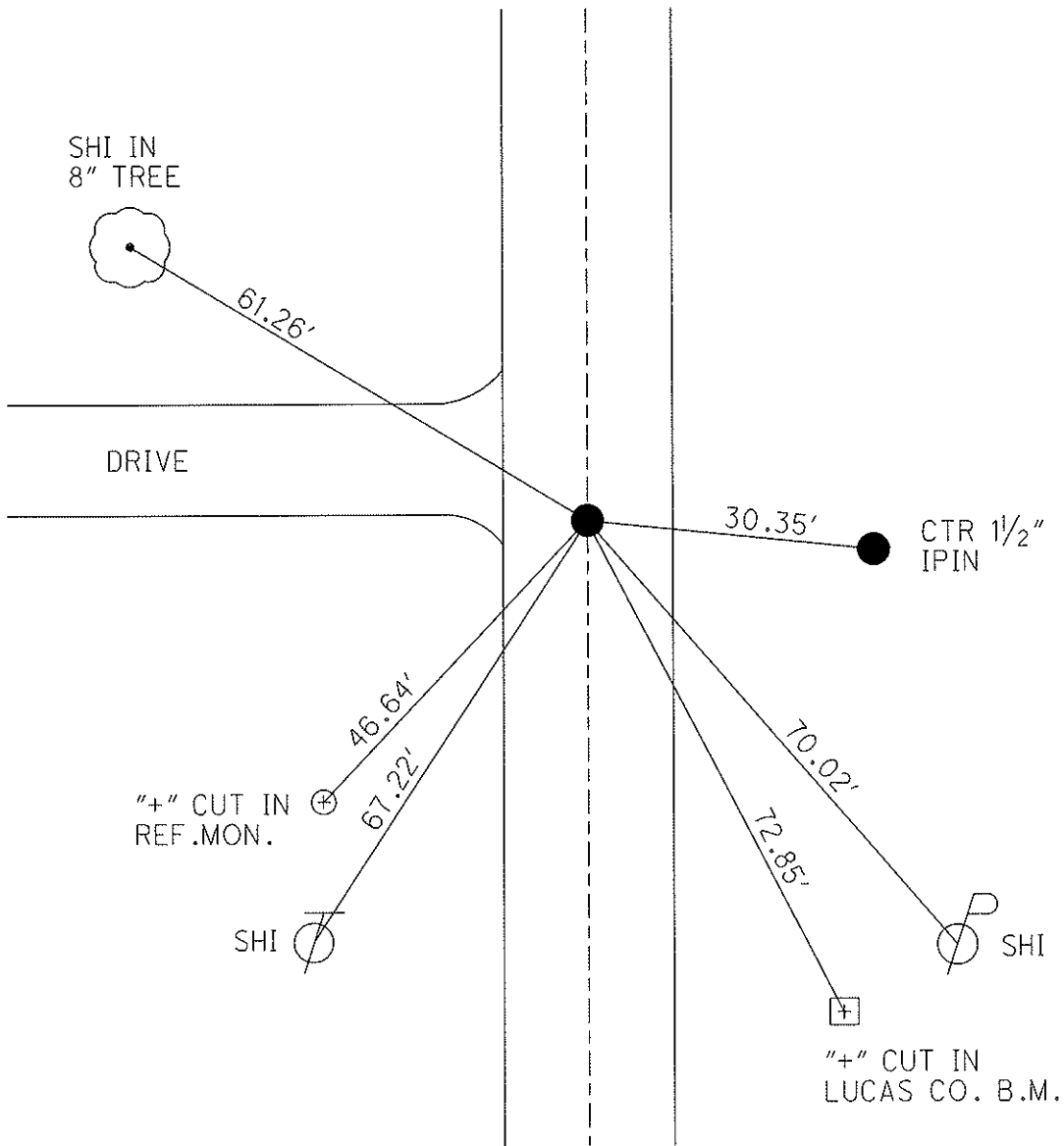
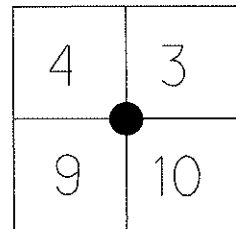
TYPE MONUMENT \_\_\_\_\_ SQ BOLT \_\_\_\_\_  
 ON SURFACE - ~~BELOW~~ \_\_\_\_\_ ON \_\_\_\_\_  
 LEFT - ☉ PAV'T - RIGHT \_\_\_\_\_  
 \_\_\_\_\_ TO \_\_\_\_\_ EDGE PAVEMENT  
 S.L.M. 625+78.18  
 GRID: NORTHING: \_\_\_\_\_ EASTING: \_\_\_\_\_



O.D.O.T. DISTRICT 2 SURVEY OFFICE (USE ONLY)

|                         |                         |                             |
|-------------------------|-------------------------|-----------------------------|
| PERSONNEL               | REFERENCE NO. <u>29</u> | SHEET <u>1</u> OF <u>24</u> |
| NOTES <u>STONE</u>      | DATE <u>5-6-86</u>      | ROUTE <u>SR 295</u>         |
| H.C. <u>CURTIS</u>      | WEATHER <u>CLOUDY</u>   | COUNTY <u>LUCAS</u>         |
| R.C. <u>HOUSEHOLDER</u> | TEMP. <u>75°</u>        | TOWNSHIP <u>SWANTON</u>     |
| <u>MICHALAK</u>         |                         | SECTION <u>3,4,9,10</u>     |
|                         |                         | T <u>7</u> N R <u>9</u> S   |

TYPE MONUMENT \_\_\_\_\_ SQUARE BOLT \_\_\_\_\_  
 ON SURFACE - ~~BELOW~~ \_\_\_\_\_ ON SURFACE \_\_\_\_\_  
 LEFT - Q PAV'T - RIGHT \_\_\_\_\_  
 \_\_\_\_\_ TO \_\_\_\_\_ EDGE PAVEMENT  
 S.L.M. 564+45  
 Grid: Northing: \_\_\_\_\_ Easting: \_\_\_\_\_



# O.D.O.T. DISTRICT 2 SURVEY OFFICE

PERSONNEL

REFERENCE NO. 29

SHEET 1 OF     

NOTES 1. Stone

H.C. D. Curtis

DATE 6 May 86

ROUTE SR # 295

R.C. J. Householder

WEATHER Cloudy

COUNTY Lucas

R. Michalak

TEMP. 750

TOWNSHIP Swanton

SECTION 3-4-9-10

T      R     

TYPE MONUMENT Square Bolt

ON SURFACE - BELOW Surface

LEFT -  $\odot$  PAV'T. - RIGHT     

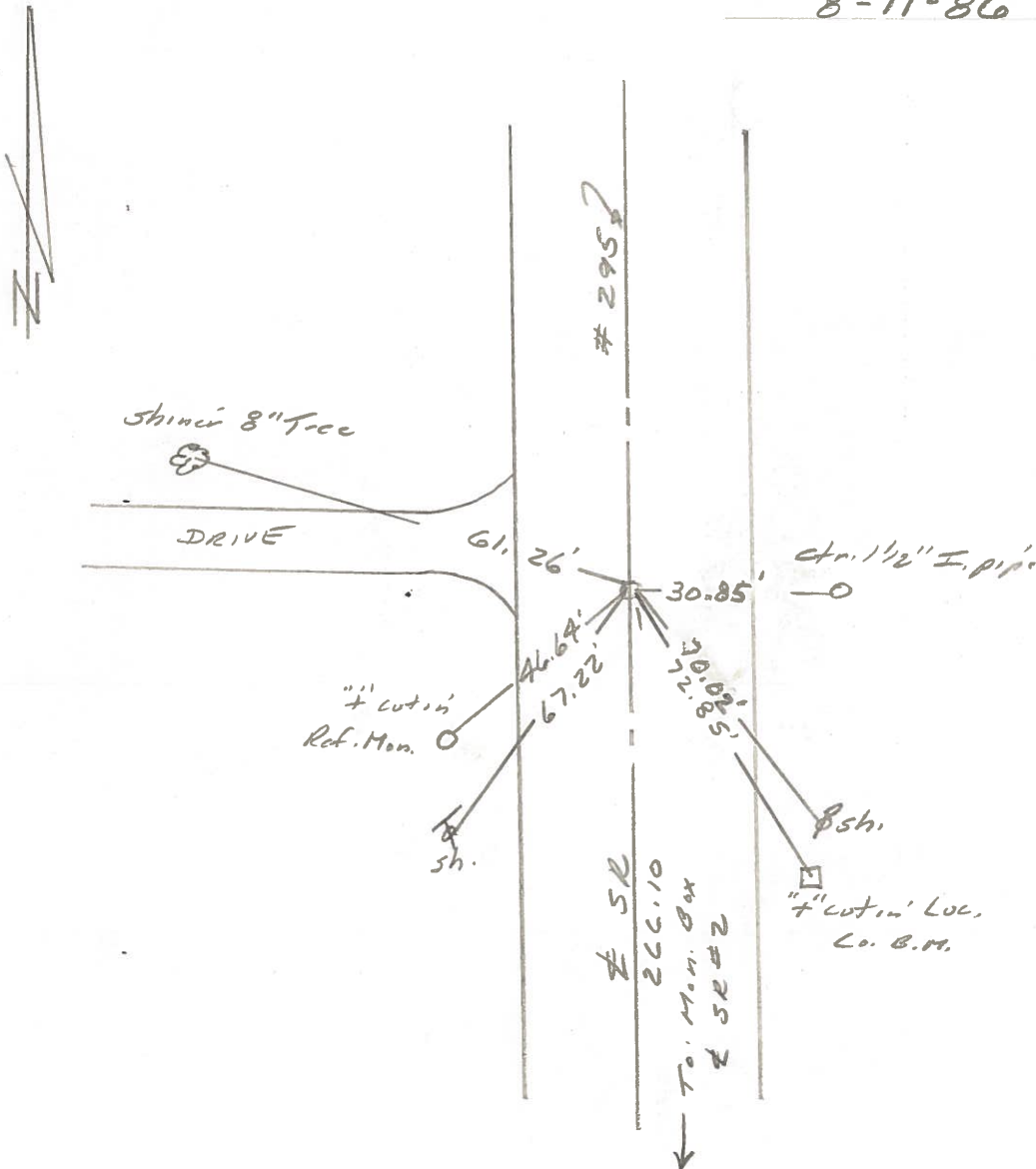
     TO      EDGE PAVEMENT

S.L.M. 564+45

|   |    |
|---|----|
| 4 | 3  |
| 9 | 10 |

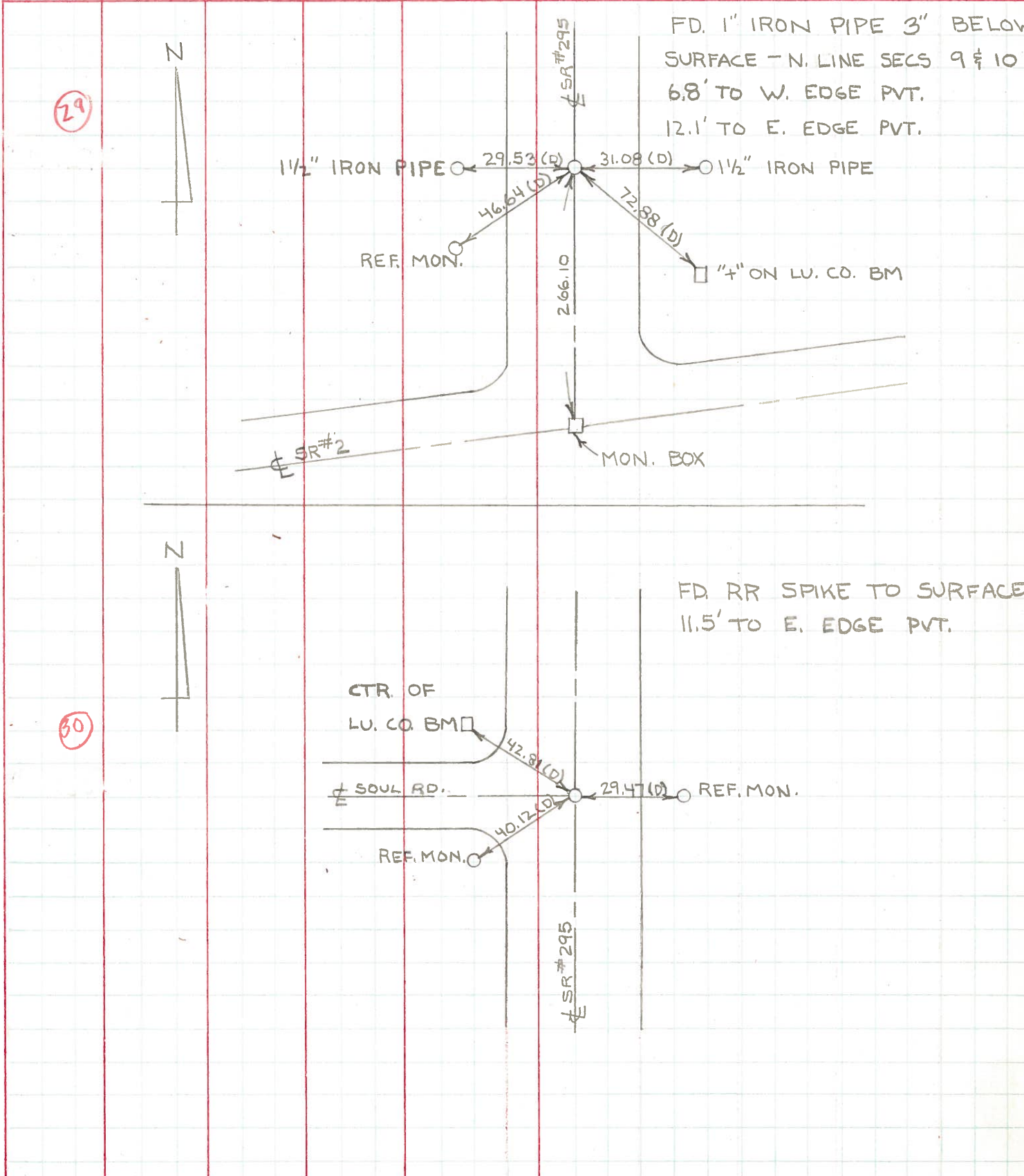


Fed. Sq. Bolt 1 1/2" Below Surface  
8-11-86



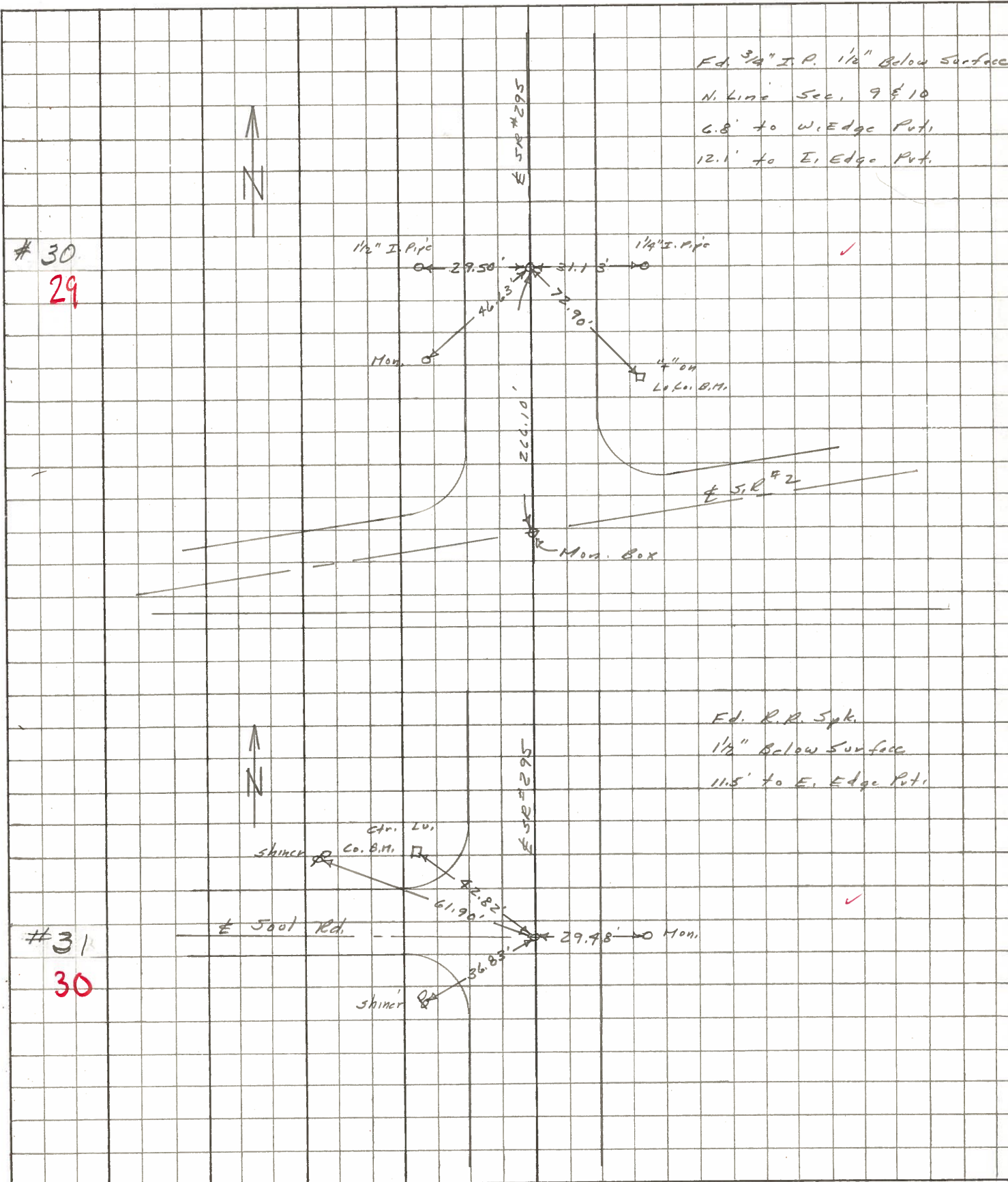
| PERSONNEL  | TITLE | PERSONNEL | TITLE | COUNTY     | DATE          | WEATHER | TEMP. |
|------------|-------|-----------|-------|------------|---------------|---------|-------|
| W. DENNO   |       |           |       | LUCAS      | JULY 16, 1971 | FAIR    | 70±   |
| D. CURTIS  |       |           |       | S. R. #295 |               |         |       |
| D. STEVENS |       |           |       |            |               |         |       |
| R. BRANNAN |       |           |       | SEC.       |               |         |       |

| DESCRIPTION | REFERENCES TO CONTROL POINTS | JOB NO. |
|-------------|------------------------------|---------|
|             | LEFT CENTER LINE RIGHT       |         |



| PERSONNEL | TITLE | PERSONNEL | TITLE | COUNTY      | DATE         |
|-----------|-------|-----------|-------|-------------|--------------|
| Stone     | Notes |           |       | Lucas       | 13 June 68   |
| Beck      | Flag  |           |       | S. R. # 295 | WEATHER Cool |
| Michalak  | Tape  |           |       |             | TEMP. 55°    |
| Schroder  | Tape  |           |       | SEC.        |              |

DESCRIPTION References to Control Points LEFT CENTER LINE RIGHT JOB NO.



Ed. 3/4" I.P. 1/2" Below Surface  
 N. Line Sec. 9 & 10  
 6.8' to W. Edge Pct.  
 12.1' to E. Edge Pct.

Ed. R.R. Spk.  
 1/2" Below Surface  
 11.5' to E. Edge Pct.

# 30  
 29

# 31  
 30