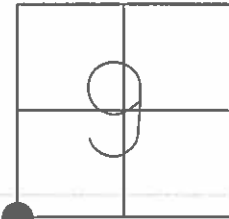


O.D.O.T. DISTRICT 2 SURVEY OFFICE (USE ONLY)

PERSONNEL	REFERENCE NO.	36	SHEET	11	OF	24
NOTES	HARBAUGH	DATE	6/29/12	ROUTE	SR 295	
H.C.	HUSS	WEATHER	SUNNY	COUNTY	LUCAS	
R.C.	COUTCHER	TEMP.	80°	TOWNSHIP	HARDING	
				SECTION	9	
				T	8	N
				R	9	E

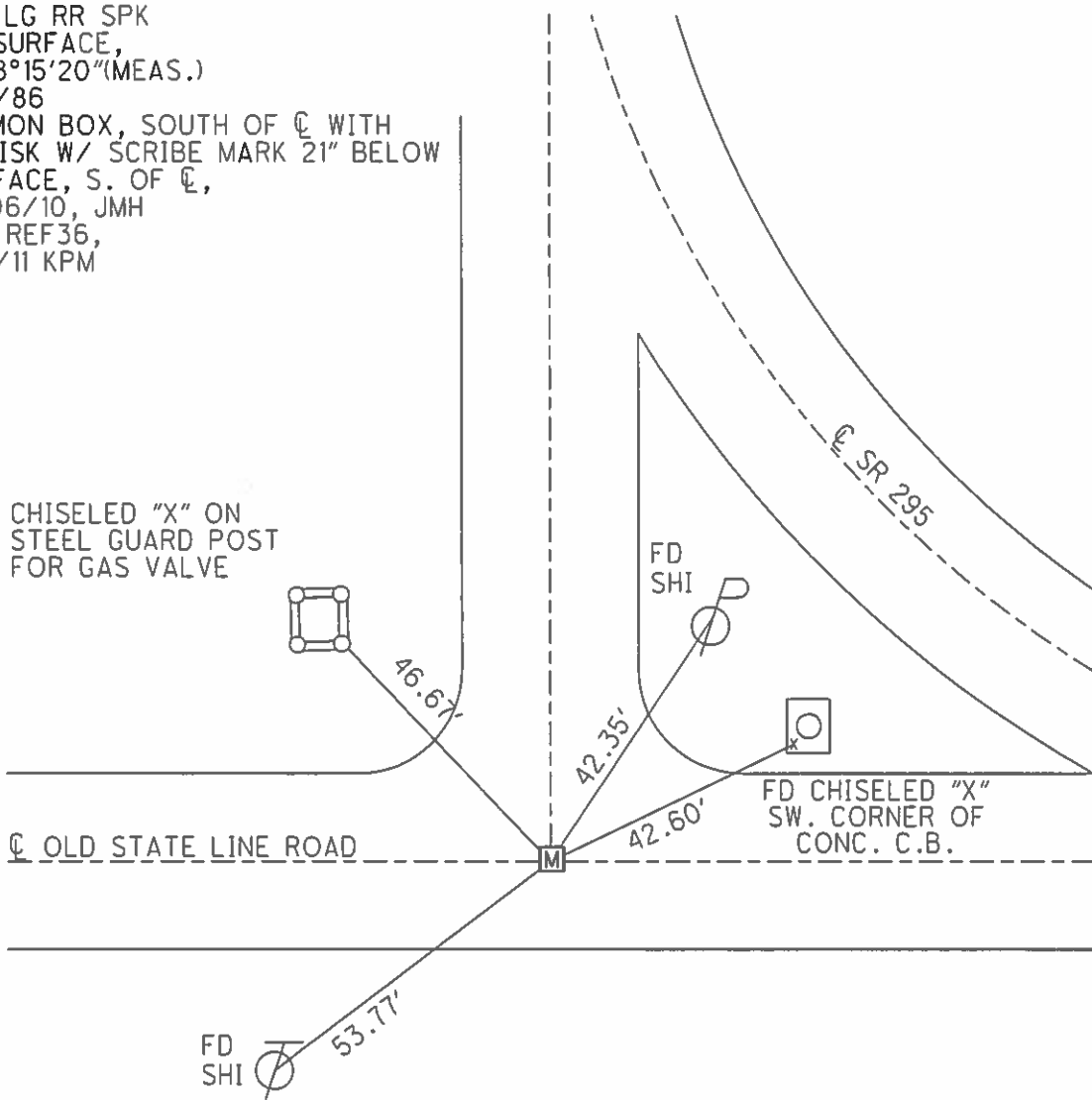
TYPE MONUMENT MON BOX  
 ON SURFACE - ~~BELOW~~ ON  
 LEFT - ☉ PAV'T - ~~RIGHT~~ 1.5'  
10.9' TO LT EDGE PAVEMENT  
 S.L.M. 755+97.82



GRID: NORTHING: 713514.598 EASTING: 1603086.607

RECORD:  
 SET LG RR SPK  
 TO SURFACE,  
 $\Delta=88^{\circ}15'20''$ (MEAS.)  
 8/11/86  
 FD MON BOX, SOUTH OF ☉ WITH  
 3" DISK W/ SCRIBE MARK 21" BELOW  
 SURFACE, S. OF ☉,  
 10/06/10, JMH  
 GPS REF36,  
 4/6/11 KPM

CHISELED "X" ON  
 STEEL GUARD POST  
 FOR GAS VALVE

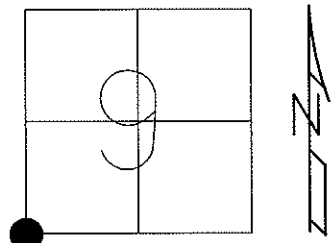


O.D.O.T. DISTRICT 2 SURVEY OFFICE (USE ONLY)

PERSONNEL	REFERENCE NO. <u>36</u>	SHEET <u>11</u> OF <u>24</u>
NOTES <u>HARBAUGH</u>	DATE <u>6-29-12</u>	ROUTE <u>SR#295</u>
H.C. <u>HUSS</u>	WEATHER <u>SUNNY</u>	COUNTY <u>LUCAS</u>
R.C. <u>COUTCHER</u>	TEMP. <u>80°F</u>	TOWNSHIP <u>HARDING</u>
		SECTION <u>9</u>
		T <u>8</u> N R <u>9</u> E

TYPE MONUMENT MON BOX  
 ON SURFACE - ~~BELOW~~ ON  
 LEFT - ☉ PAV'T - ~~RIGHT~~ 1.5'  
10.9' TO LT. EDGE PAVEMENT  
 S.L.M. 755+97.82

Grid: Northing: 713514.598 Easting: 1603086.607

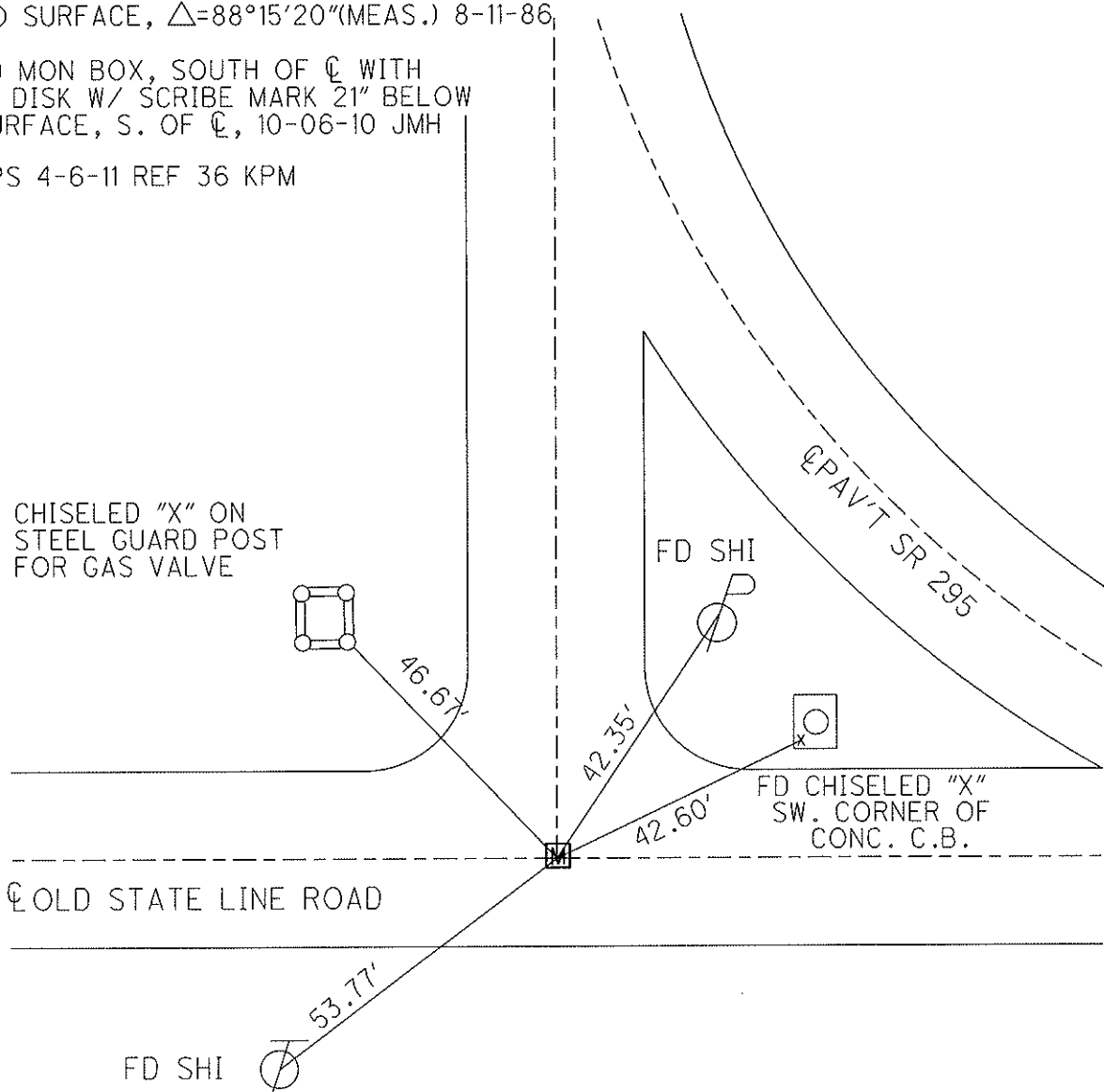


RECORD: SET LG RR SPK  
 TO SURFACE,  $\Delta=88^{\circ}15'20''$ (MEAS.) 8-11-86

FD MON BOX, SOUTH OF ☉ WITH  
 3" DISK W/ SCRIBE MARK 21" BELOW  
 SURFACE, S. OF ☉, 10-06-10 JMH

GPS 4-6-11 REF 36 KPM

CHISELED "X" ON  
 STEEL GUARD POST  
 FOR GAS VALVE



# O.D.O.T. DISTRICT 2 SURVEY OFFICE

PERSONNEL

REFERENCE NO. 36

SHEET 10 OF     

NOTES 1 Stone

H.C. D. Curtis

DATE 6 May 86

ROUTE SR # 295

R.C. J. Hausholder

WEATHER Warm

COUNTY Lucas

R. Michalak

TEMP. 80°

TOWNSHIP Harding

SECTION 9

T      R     

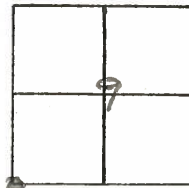
TYPE MONUMENT Square bolt

ON SURFACE - BELOW Surface

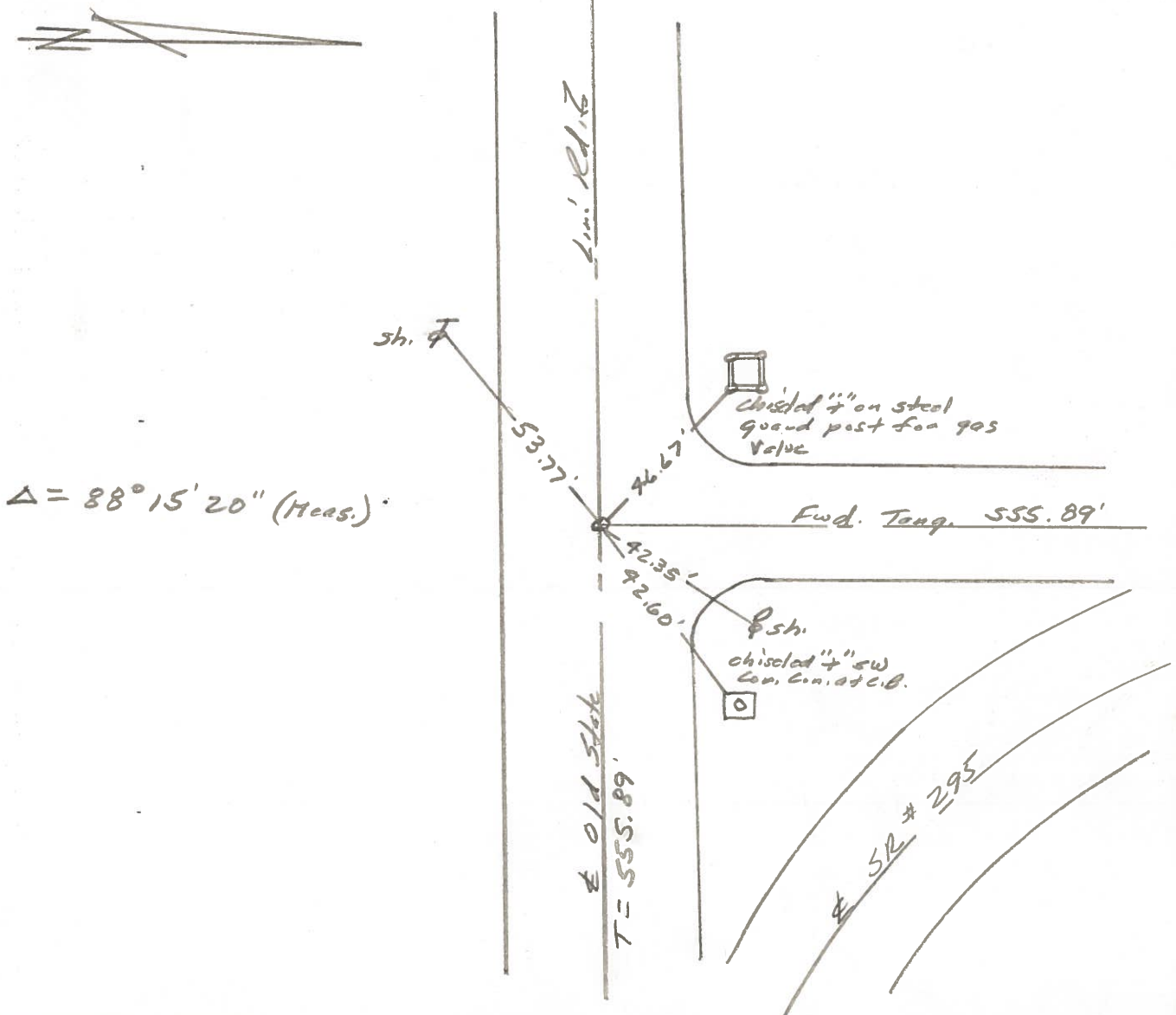
LEFT - & PAV'T. - RIGHT     

     TO      EDGE PAVEMENT

S.L.M.     



Set Lg. R.R. Spk. To Surface -  
8-11-86



# O.D.O.T. DISTRICT 2 SURVEY OFFICE

PERSONNEL \_\_\_\_\_

REFERENCE NO. 36

SHEET 7 OF \_\_\_\_\_

NOTES 1. Stone

H.C. D. Curtis

R.C. J. Hausholder

DATE 28 May 85

WEATHER Cloudy

TEMP. 60°

ROUTE SR#295

COUNTY Lucas

TOWNSHIP Heeding

SECTION 9

T. \_\_\_\_\_ R. \_\_\_\_\_

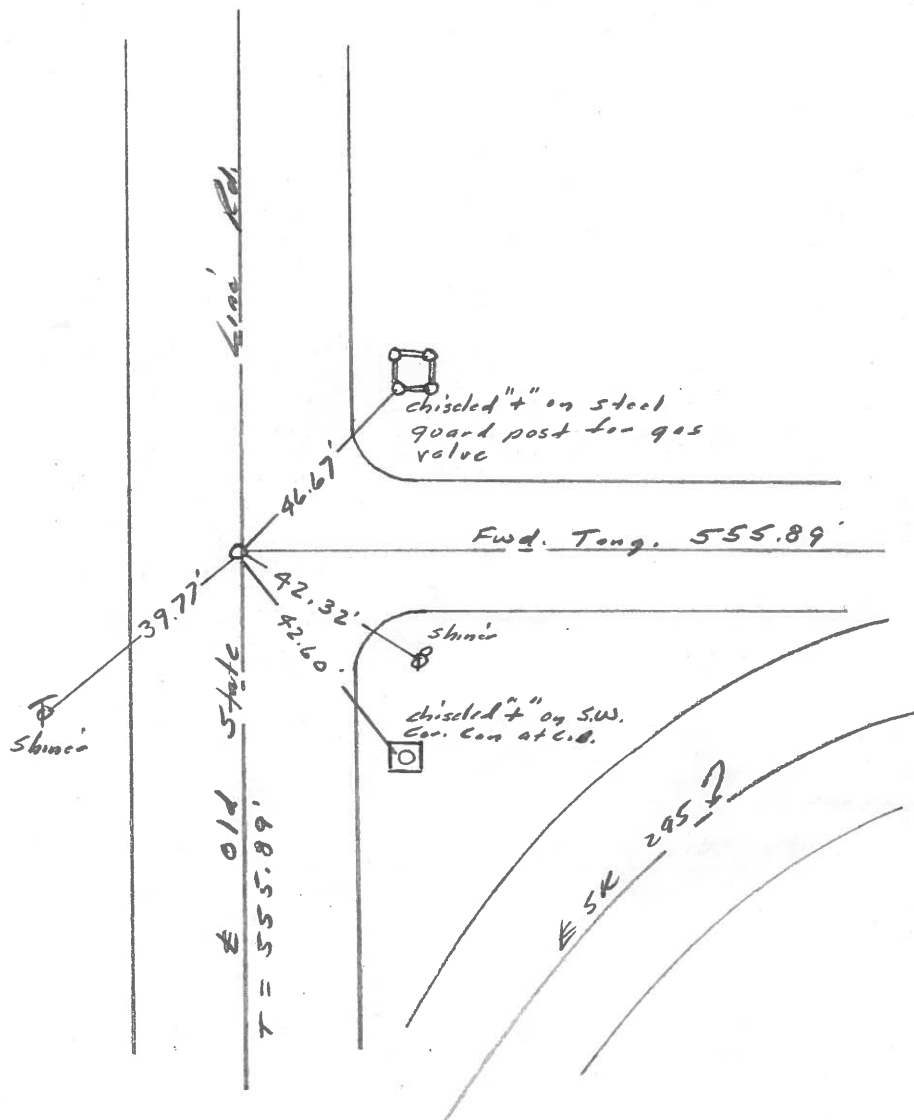
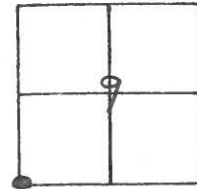
TYPE MONUMENT Square bolt

ON SURFACE - BELOW Surface

LEFT - ☉ PAV'T. - RIGHT \_\_\_\_\_

TO \_\_\_\_\_ EDGE PAVEMENT

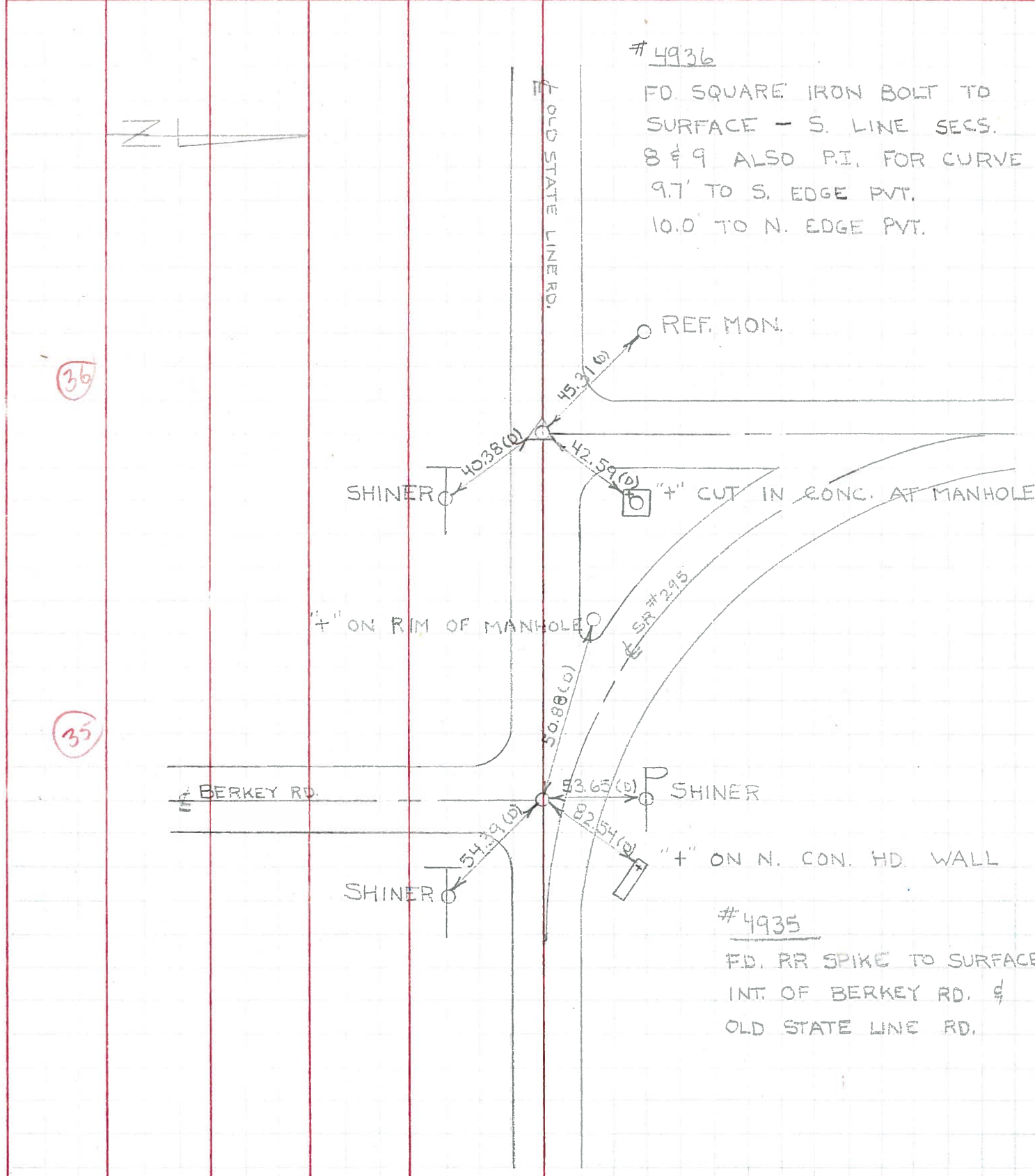
S.L.M. \_\_\_\_\_



Fd. Square bolt  
 P.I. To Curve  
 $\Delta = 88^{\circ}15'20''$   
 Sta. 694+48.94

PERSONNEL	TITLE	PERSONNEL	TITLE	COUNTY	DATE	WEATHER	TEMP.
W. DENNO				LUCAS	JULY 16, 1971	FAIR	75 ±
D. CURTIS				S. R. # 295			
D. STEVENS							
R. BRANNAN				SEC.			

DESCRIPTION	REFERENCES TO CONTROL POINTS	JOB NO.
	LEFT CENTER LINE RIGHT	



36

35

PERSONNEL	TITLE	PERSONNEL	TITLE	COUNTY	DATE	WEATHER	TEMP.
Stone	Notes			Lucas	13 June 68	Cool	57°
Beck	Flag			S. R. #295			
Michalala	Tape			SEC.			
Schroeder	Tape						

DESCRIPTION References to Central Points JOB NO. \_\_\_\_\_

