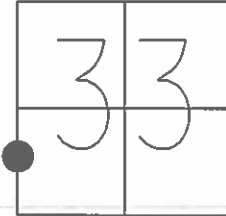


O.D.O.T. DISTRICT 2 SURVEY OFFICE(USE ONLY)

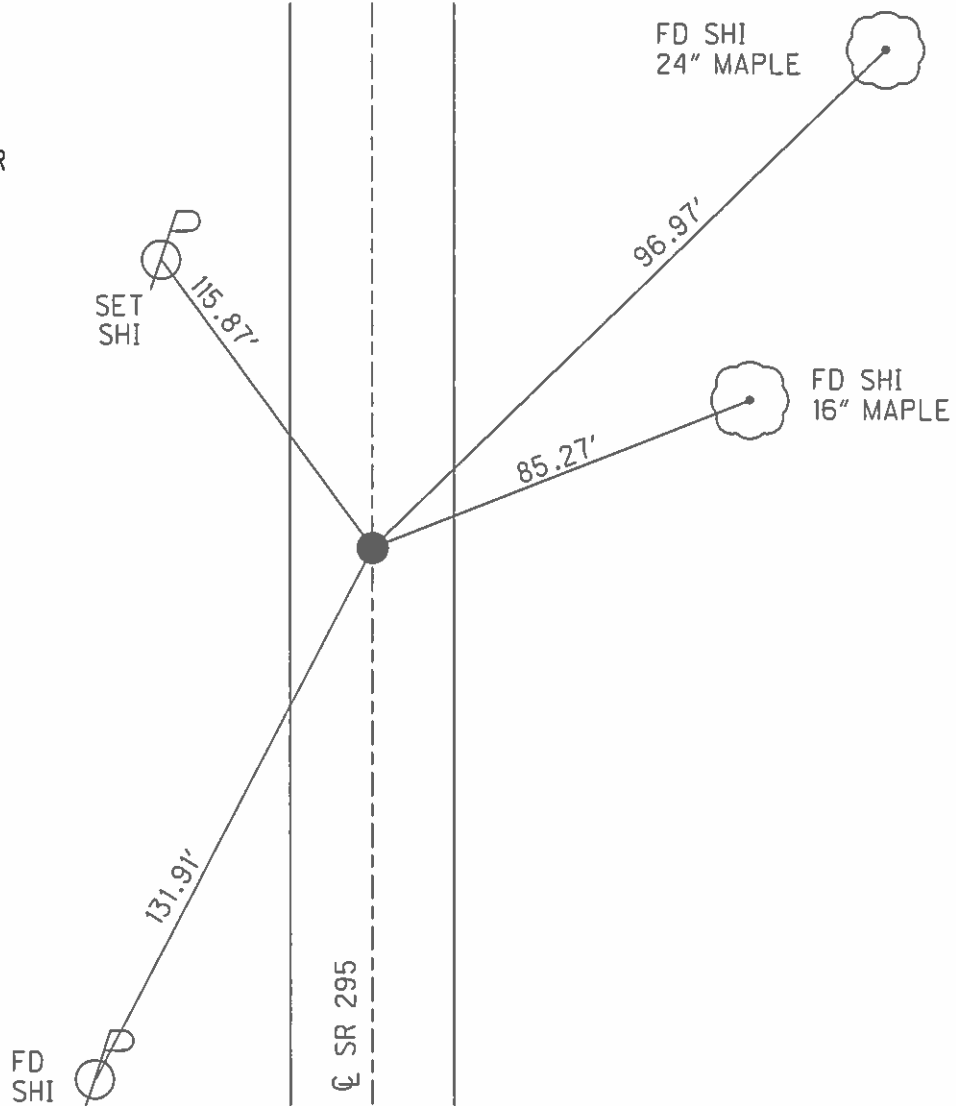
PERSONNEL \_\_\_\_\_ REFERENCE NO. 41 A SHEET 17 OF 24  
 NOTES HARBAUGH DATE 7/2/12 ROUTE SR 295  
 H.C. HUSS WEATHER FAIR COUNTY LUCAS  
 R.C. COUTCHER TEMP. 80° TOWNSHIP SPENCER  
 \_\_\_\_\_ SECTION 33  
 \_\_\_\_\_ T 9 S R 5 E

TYPE MONUMENT \_\_\_\_\_ P.K. NAIL \_\_\_\_\_  
 ON SURFACE - ~~BELOW~~ \_\_\_\_\_ ON \_\_\_\_\_  
 LEFT - ☉ PAV'T - ~~RIGHT~~ \_\_\_\_\_ 1.9'  
8.9' TO LT EDGE PAVEMENT  
 S.L.M. 873+07



GRID: NORTHING: 725453.026 EASTING: 1602989.956

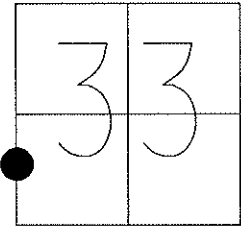
RECORD:  
 SET P.K. NAIL  
 TO SURFACE  
 8/11/86  
 SET MAG/WASHER  
 10/16/12, SDC  
 GPS, NEWREFA41  
 12/13/12, SDC



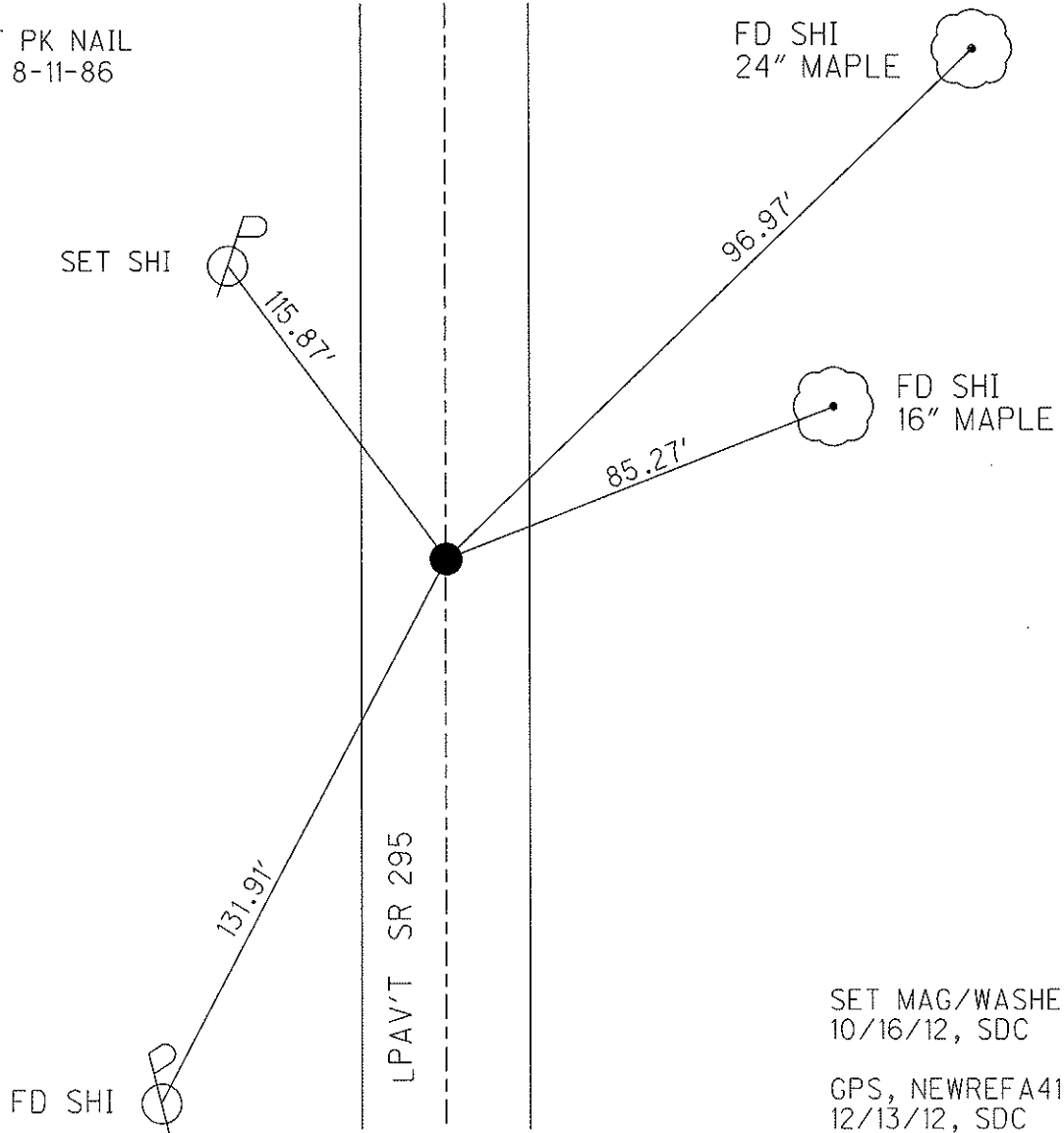
O.D.O.T. DISTRICT 2 SURVEY OFFICE (USE ONLY)

PERSONNEL	REFERENCE NO. <u>41A</u>	SHEET <u>17</u> OF <u>24</u>
NOTES HARBAUGH	DATE <u>7-2-12</u>	ROUTE <u>SR#295</u>
H.C. <u>HUSS</u>	WEATHER <u>FAIR</u>	COUNTY <u>LUCAS</u>
R.C. <u>COUTCHER</u>	TEMP. <u>80°F</u>	TOWNSHIP <u>SPENCER</u>
		SECTION <u>33</u>
		T <u>9</u> S R <u>5</u> E

TYPE MONUMENT \_\_\_\_\_ PK NAIL \_\_\_\_\_  
 ON SURFACE - ~~BELOW~~ \_\_\_\_\_ ON \_\_\_\_\_  
 LEFT - Q PAV'T - ~~RIGHT~~ \_\_\_\_\_ 1.9' \_\_\_\_\_  
8.9' TO LT EDGE PAVEMENT  
 S.L.M. 873+07  
 Grid: Northing: 725453.026 Easting: 1602989.956



RECORD: SET PK NAIL  
 TO SURFACE 8-11-86



SET MAG/WASHER  
 10/16/12, SDC  
 GPS, NEWREFA41  
 12/13/12, SDC

# O.D.O.T. DISTRICT 2 SURVEY OFFICE

PERSONNEL \_\_\_\_\_

REFERENCE NO. 41-A

SHEET 16 OF \_\_\_\_\_

NOTES 1. Stone

H.C. D. Curtis

R.C. J. Householder

R. Michalak

DATE 7 May 86

WEATHER Cloudy

TEMP. 70°

ROUTE SR #295

COUNTY Lucas

TOWNSHIP Spencer

SECTION 33

T \_\_\_\_\_ R \_\_\_\_\_

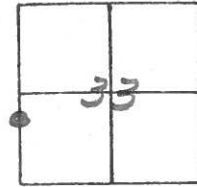
TYPE MONUMENT PK Nail

ON SURFACE - BELOW Surface

LEFT -  $\odot$  PAV'T. - RIGHT \_\_\_\_\_

\_\_\_\_\_ TO \_\_\_\_\_ EDGE PAVEMENT

S.L.M. 811 + 67



Set P.K. Nail To Surface -  
8-11-86

