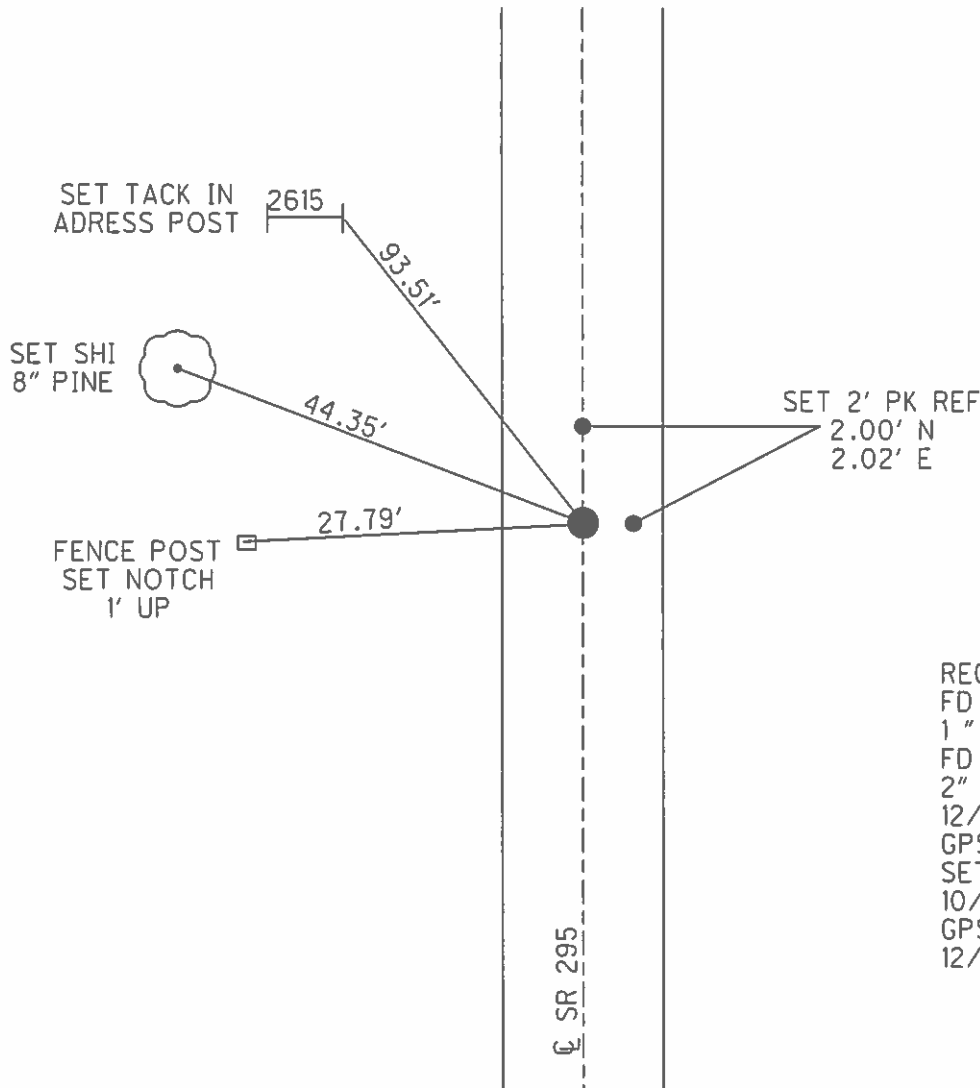
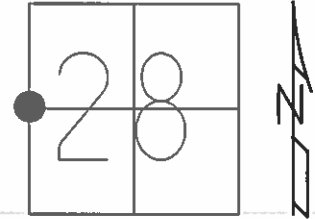


O.D.O.T. DISTRICT 2 SURVEY OFFICE (USE ONLY)

PERSONNEL _____ REFERENCE NO. 44 SHEET 20 OF 24
 NOTES HARBAUGH DATE 7/2/12 ROUTE SR 295
 H.C. HUSS WEATHER SUNNY COUNTY LUCAS
 R.C. COUTCHER TEMP. 80° TOWNSHIP RICHFIELD
 CANTERBURY SECTION 28
 T 9 S R 5 E

TYPE MONUMENT _____ P.K. NAIL
 ON SURFACE - ~~BELOW~~ ON _____
 LEFT - ☉ PAV'T - ~~RIGHT~~ 2.4'
8.1' TO LT EDGE PAVEMENT
 S.L.M. 927+70.21
 GRID: NORTHING: 730915.408 EASTING: 1602945.008



RECORD:
 FD P.K.NAIL
 1" DEEP, 8/11/86
 FD P.K. SHANK
 2" DEEP
 12/29/10
 GPS REF 44
 SET MAG/WASHER
 10/25/12, SDC
 GPS, NEWREF44
 12/13/12, SDC

O.D.O.T. DISTRICT 2 SURVEY OFFICE (USE ONLY)

PERSONNEL

REFERENCE NO. 44

SHEET 20 OF 24

NOTES HARBAUGH

DATE 7-2-12

ROUTE SR#295

H.C. HUSS

WEATHER SUNNY

COUNTY LUCAS

R.C. COUTCHER

TEMP. 80°F

TOWNSHIP RICHFIELD

CANTERBURY

SECTION 28

T 9 S R 5 E

TYPE MONUMENT PK NAIL

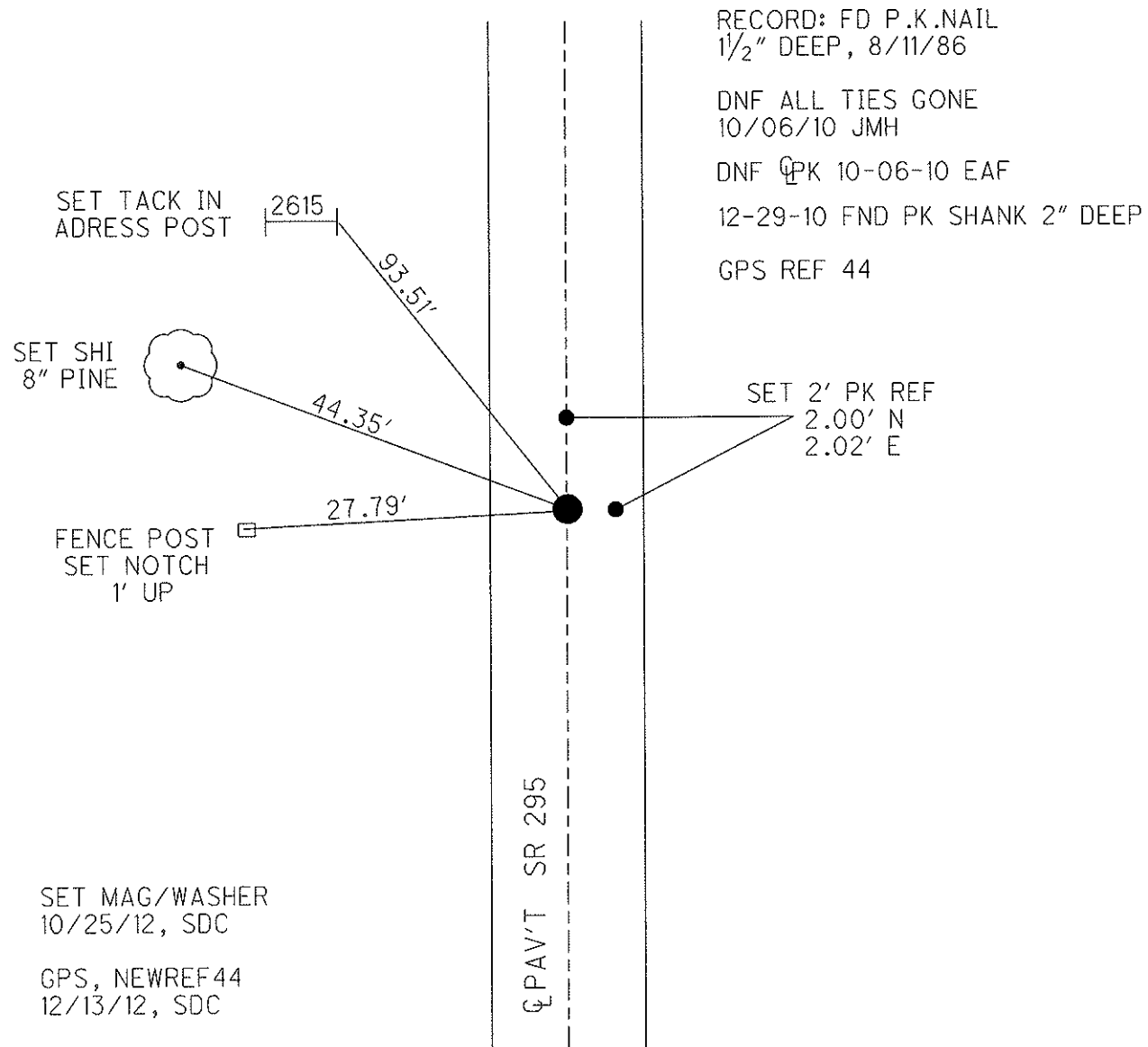
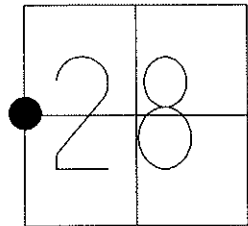
ON SURFACE - ~~BELOW~~ ON

LEFT - Q PAV'T - ~~RIGHT~~ 2.4'

8.1' TO LT EDGE PAVEMENT

S.L.M. 927+70.21

Grid: Northing: 730915.408 Easting: 1602945.008



O.D.O.T. DISTRICT 2 SURVEY OFFICE

PERSONNEL _____

REFERENCE NO. 44

SHEET 19 OF _____

NOTES 1. Stone

H.C. D. Curtis

R.C. J. Hausholder

R. Michalak

DATE 7 May 86

WEATHER Cloudy

TEMP. 71°

ROUTE SR #295

COUNTY Lucas

TOWNSHIP Richfield

SECTION 28

T _____ R _____

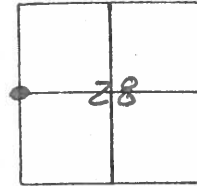
TYPE MONUMENT PK Nail

ON SURFACE - BELOW Surface

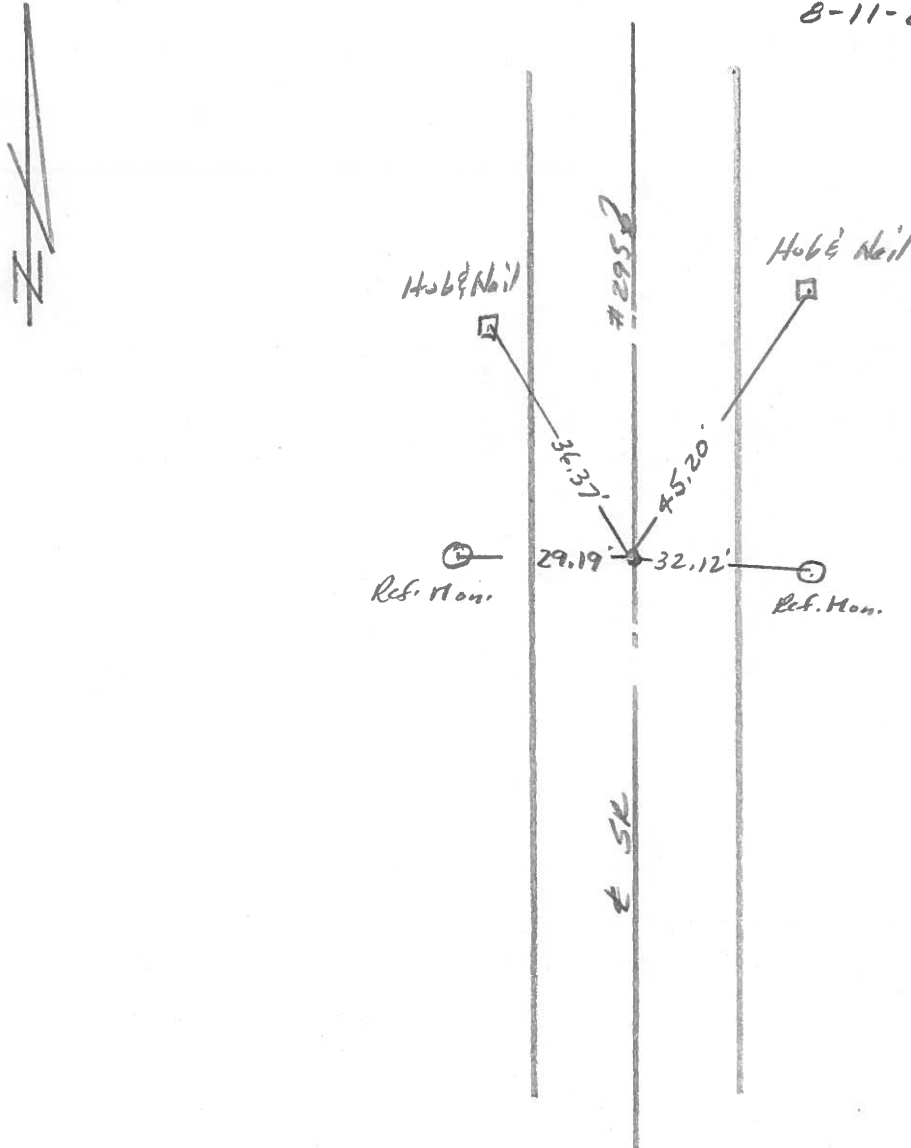
LEFT - & PAV'T. - RIGHT _____

_____ TO _____ EDGE PAVEMENT

S.L.M. 866+32

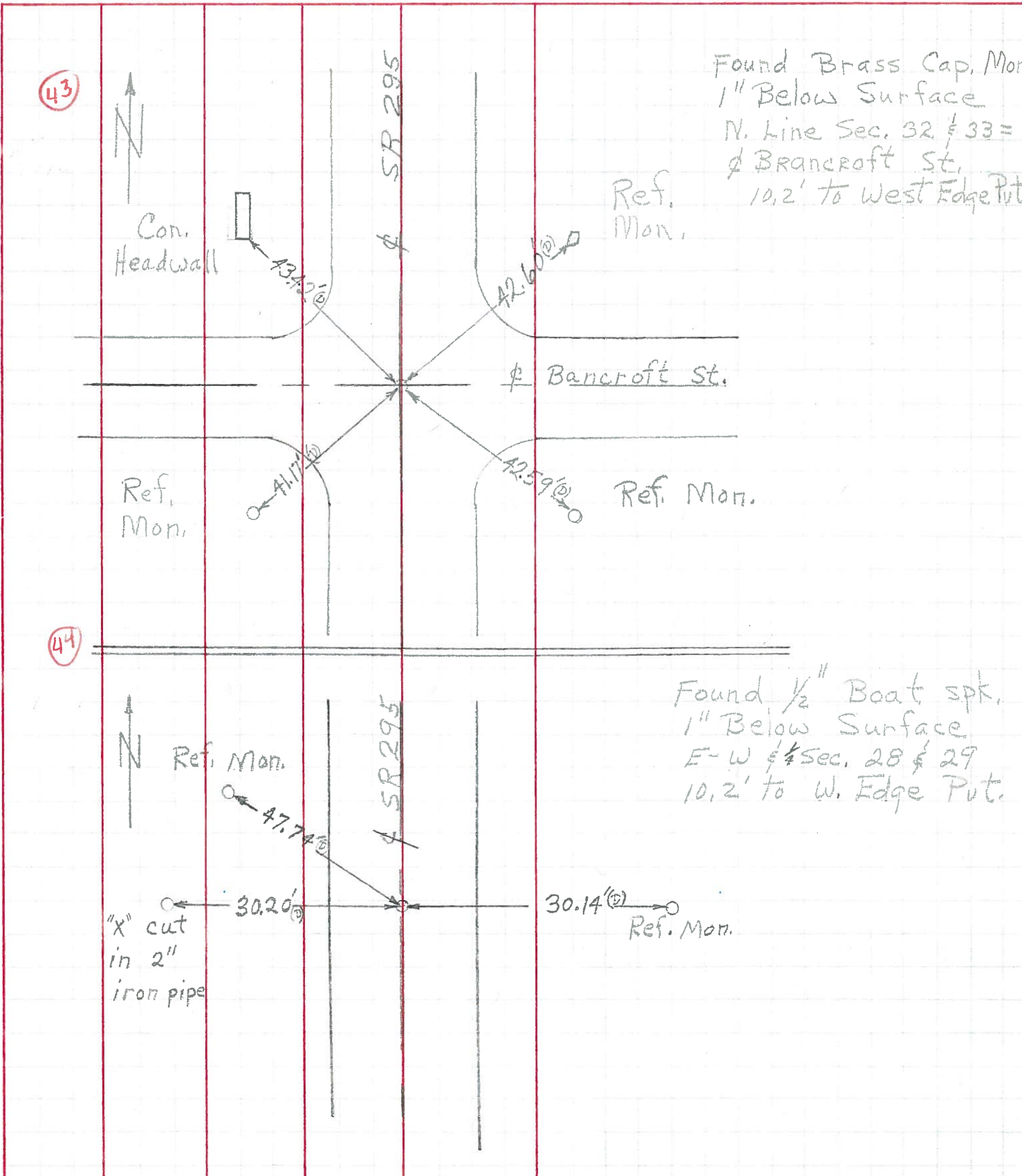


Fd. P.K. Nail 1 1/2" Deep -
8-11-86



PERSONNEL	TITLE	PERSONNEL	TITLE	COUNTY	DATE
W. Denno				Lucas	May 4, 1971
D. Curtis				S. R. #295	WEATHER Mild
R. Engel				SEC.	TEMP. 55°

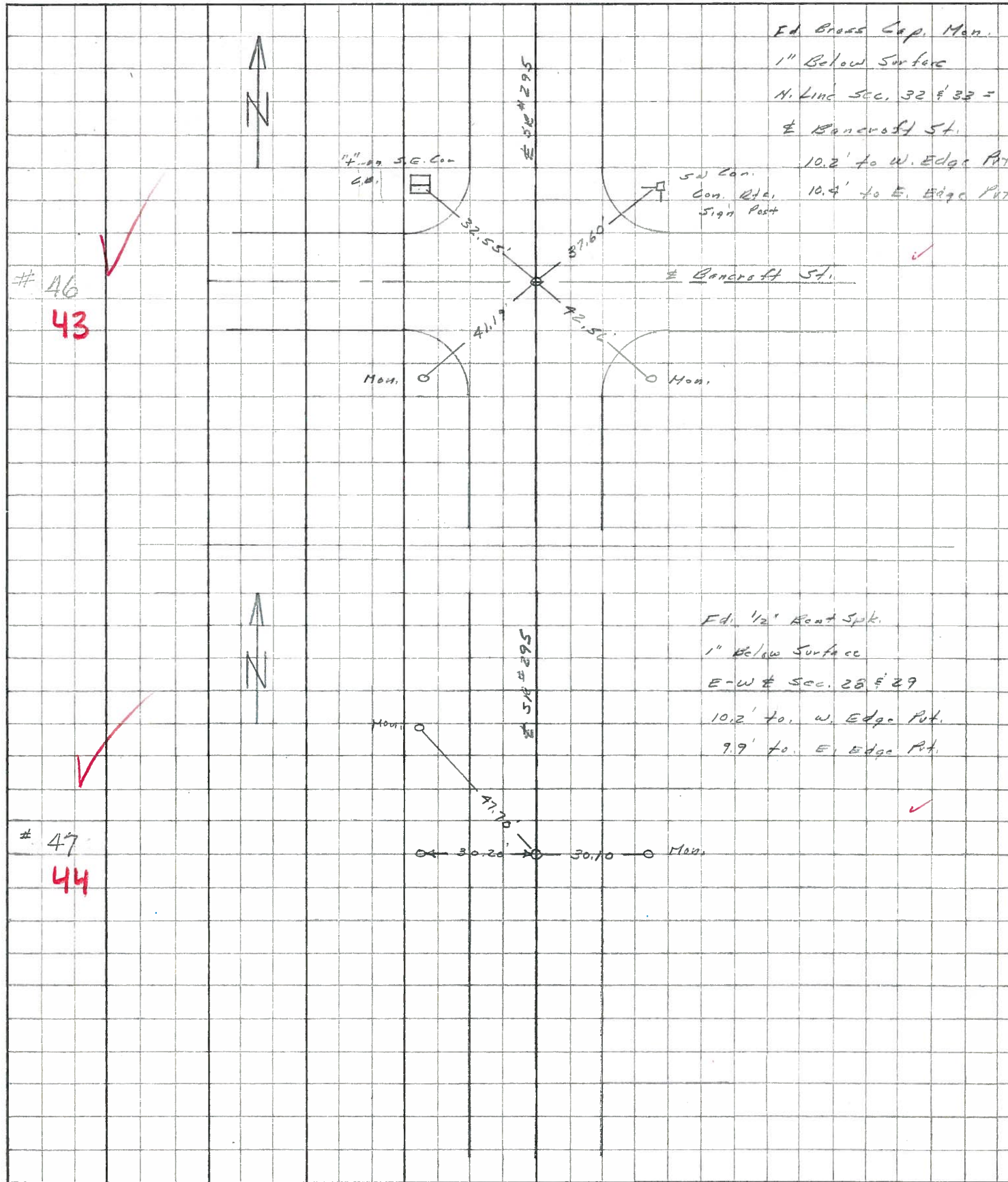
DESCRIPTION References to Control Points JOB NO. _____



PERSONNEL	TITLE	PERSONNEL	TITLE
Stone	Notes		
Beck	Flag		
Michalak	Tape		
Schroder	Tape		

COUNTY Lucas DATE 13 June 68
 S. R. # 295 WEATHER Fair
 SEC. _____ TEMP. 60°

DESCRIPTION References to Control Points JOB NO. _____
 LEFT CENTER LINE RIGHT



Ed. Brass Cap. Mon.
 1" Below Surface
 N. Line Sec. 32 & 33 =
 E Bancroft St.
 10.2' to W. Edge Pt.
 10.4' to E. Edge Pt.

Ed. 1/2" Root Spk.
 1" Below Surface
 E-W Sec. 28 & 29
 10.2' to W. Edge Pt.
 9.9' to E. Edge Pt.

46
 43

47
 44