

O.D.O.T. DISTRICT 2 SURVEY OFFICE (USE ONLY)

PERSONNEL

REFERENCE NO. 44 A

SHEET 21 OF 24

NOTES HARBAUGH

DATE 7-2-12

ROUTE SR 295

H.C. HUSS

WEATHER FAIR

COUNTY LUCAS

R.C. COUTCHER

TEMP. 80°F

TOWNSHIP RICHFIELD

CANTERBURY

SECTION 28

DWG BY MAHLER PID 107059

T 9 N R 5 E

TYPE MONUMENT P.K./WASHER

ON SURFACE - ~~BELOW~~ ON

OFFSET Q PAVEMENT ON, 1.0' S. Q US 20 LT : RT

- TO - EDGE PAVEMENT

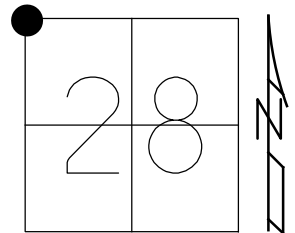
STATION: 953+67.53

HORZ. DATUM: NAD83 (2011)

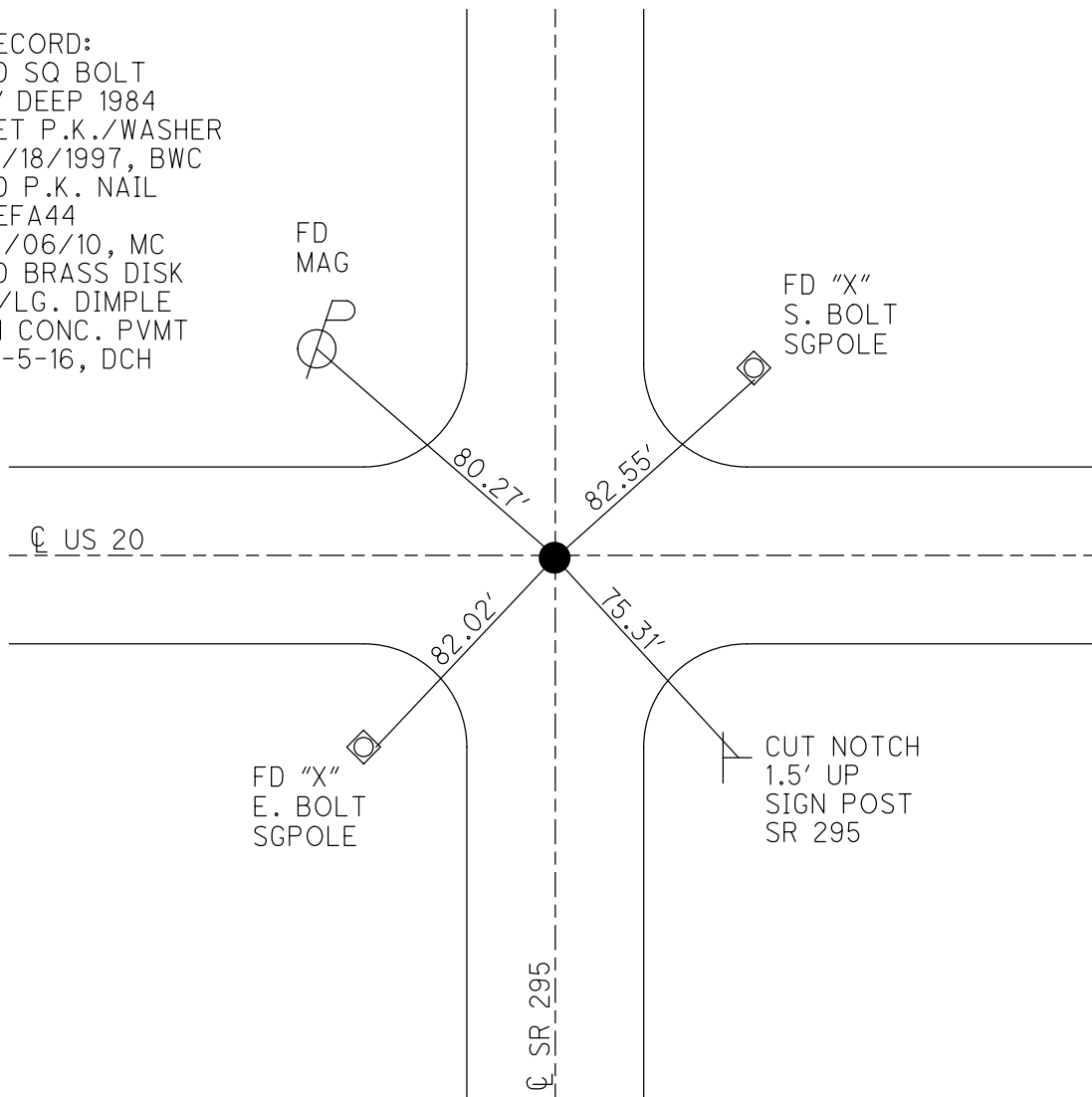
GEOID: NAVD88-2012A

GRID: NORTHING: 733512.807

EASTING: 1602925.437



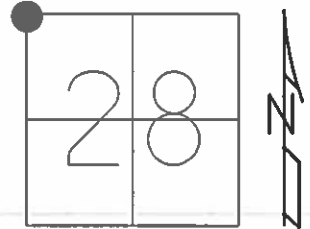
RECORD:
 FD SQ BOLT
 2" DEEP 1984
 SET P.K./WASHER
 12/18/1997, BWC
 FD P.K. NAIL
 REFA44
 10/06/10, MC
 FD BRASS DISK
 W/LG. DIMPLE
 IN CONC. PVMT
 12-5-16, DCH



O.D.O.T. DISTRICT 2 SURVEY OFFICE (USE ONLY)

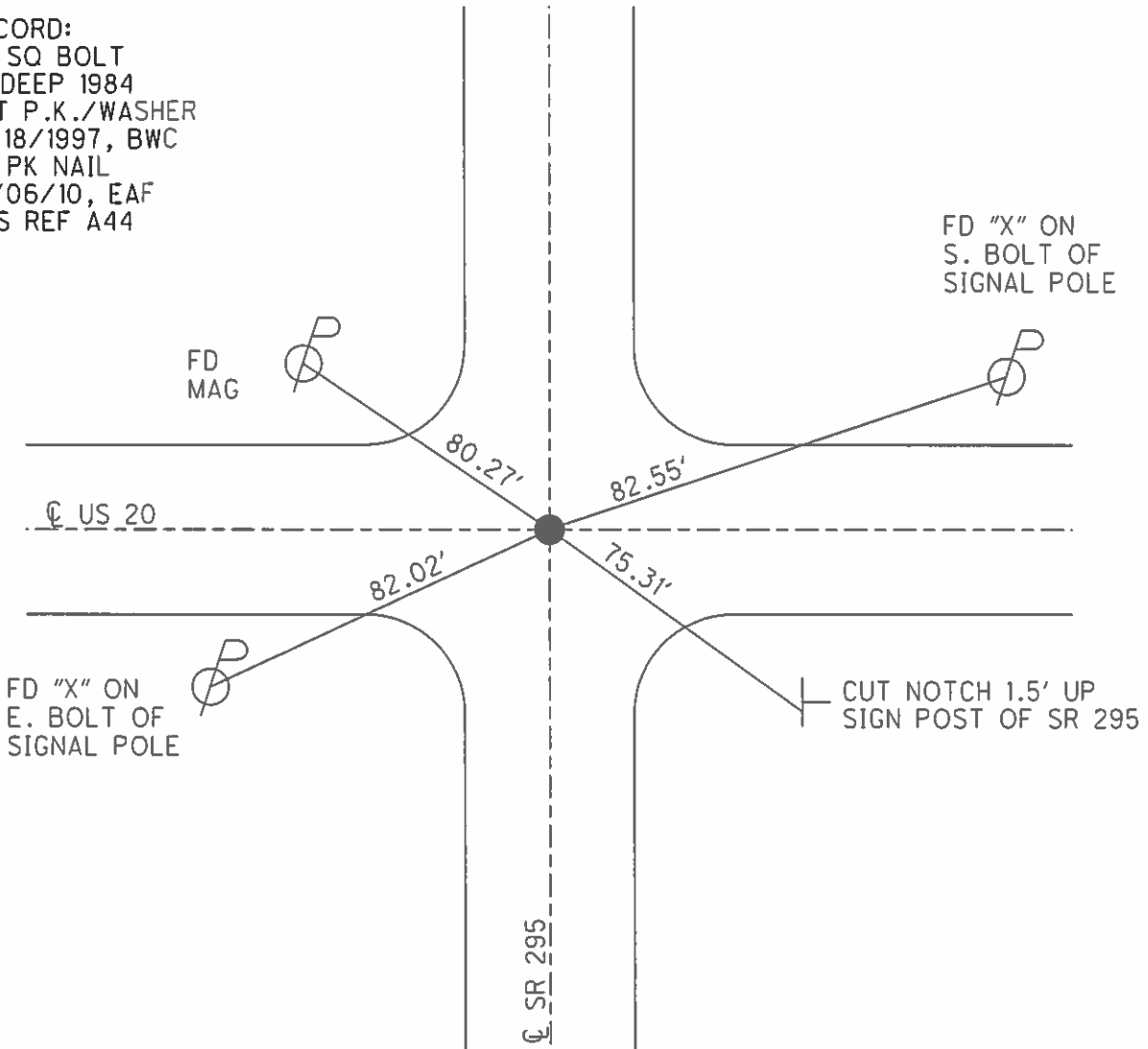
PERSONNEL _____ REFERENCE NO. 44 A SHEET 21 OF 24
 NOTES HARBAUGH _____ DATE 7/2/12 ROUTE SR 295
 H.C. HUSS _____ WEATHER FAIR COUNTY LUCAS
 R.C. COUTCHER _____ TEMP. 80° TOWNSHIP RICHFIELD
 CANTERBURY _____ SECTION 28
 T 9 S R 5 E

TYPE MONUMENT _____ P.K./WASHER _____
 ON SURFACE - ~~BELOW~~ _____ ON _____
 LEFT - ☉ PAV'T - RIGHT ON, 1.0' S. ☉ US 20
 _____ TO _____ EDGE PAVEMENT
 S.L.M. 953+67.53, 111+31 ON US 20



GRID: NORTHING: 733513.7603 EASTING: 1602919.0326

RECORD:
 FD SQ BOLT
 2" DEEP 1984
 SET P.K./WASHER
 12/18/1997, BWC
 FD PK NAIL
 10/06/10, EAF
 GPS REF A44



O.D.O.T. DISTRICT 2 SURVEY OFFICE (USE ONLY)

PERSONNEL

REFERENCE NO. 44 A

SHEET 21 OF 24

NOTES HARBAUGH

DATE 7-2-12

ROUTE SR#295

H.C. HUSS

WEATHER FAIR

COUNTY LUCAS

R.C. COUTCHER

TEMP. 80°F

TOWNSHIP RICHFIELD

CANTERBURY

SECTION 20-21 28-29

T 9 S R 5 E

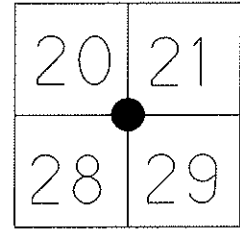
TYPE MONUMENT PK/WASHER

ON SURFACE - ~~BELOW~~ ON

LEFT - ☉ PAV'T - RIGHT ON, 1.0' S. ☉ US 20
TO EDGE PAVEMENT

S.L.M. 953+67.53, 111+31 ON US 20

Grid: Northing: 733513.7603 Easting: 1602919.0326



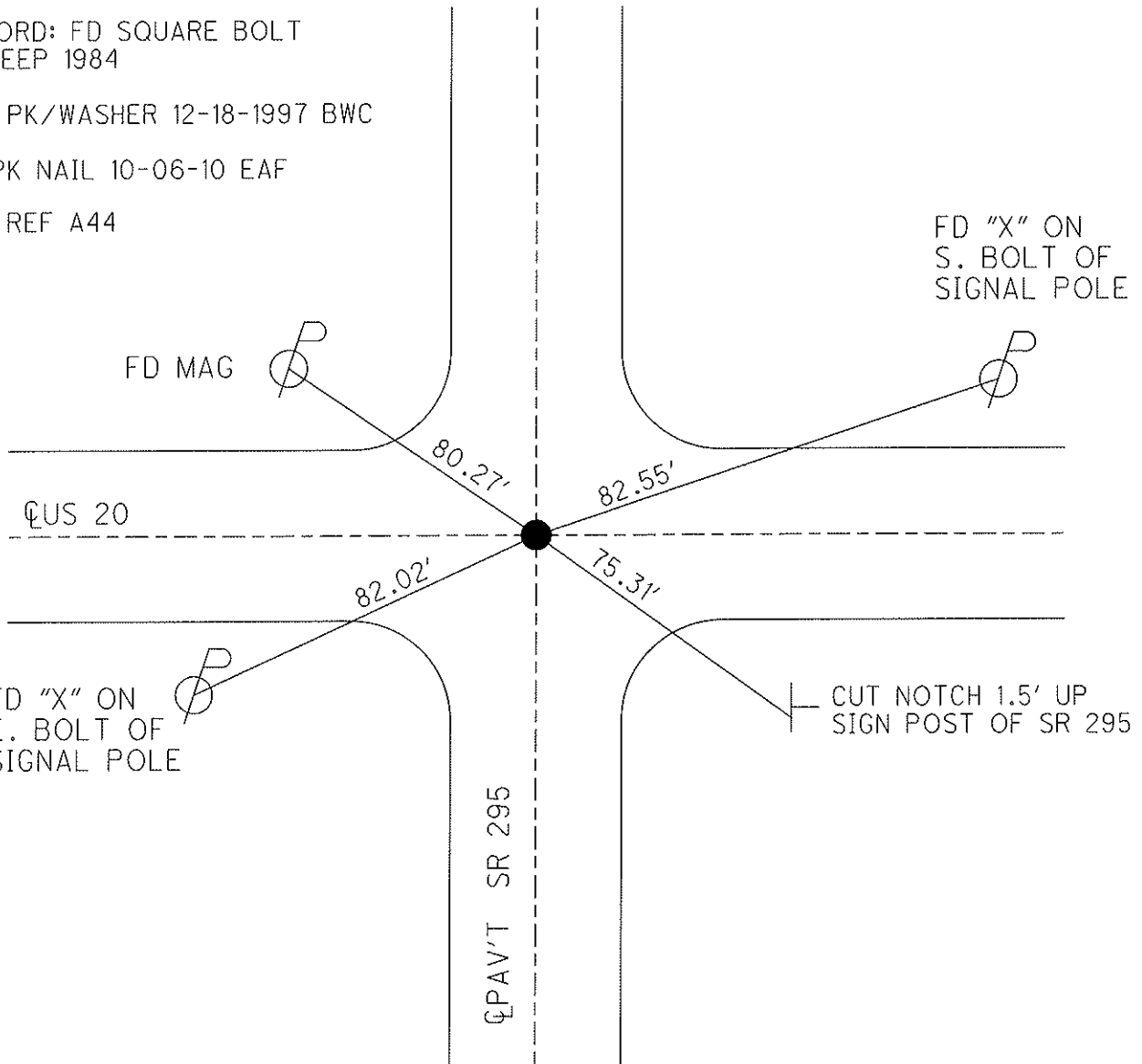
RECORD: FD SQUARE BOLT
 2" DEEP 1984

SET PK/WASHER 12-18-1997 BWC

FD PK NAIL 10-06-10 EAF

GPS REF A44

FD "X" ON
 S. BOLT OF
 SIGNAL POLE



SLM 18.06 ✓

O.D.O.T. DISTRICT 2 SURVEY OFFICE

PERSONNEL

REFERENCE NO. 44.A/4

SHEET 1 OF 10

NOTES CORDES

DATE 6-24-97

ROUTE SR295/US 20

H.C. VAN DUSEN

WEATHER SUNNY

COUNTY LUCAS

R.C. COX

TEMP. 90°

TOWNSHIP RICHFIELD

SECTION 20-21-28-29

T 9 S R 5 E

TYPE MONUMENT SMALL RR SPIKE

ON SURFACE ~~BELOW~~ YES

~~LEFT~~ - Q PAV'T - RIGHT 1.2' RT Q PAV'T

TO EDGE PAVEMENT

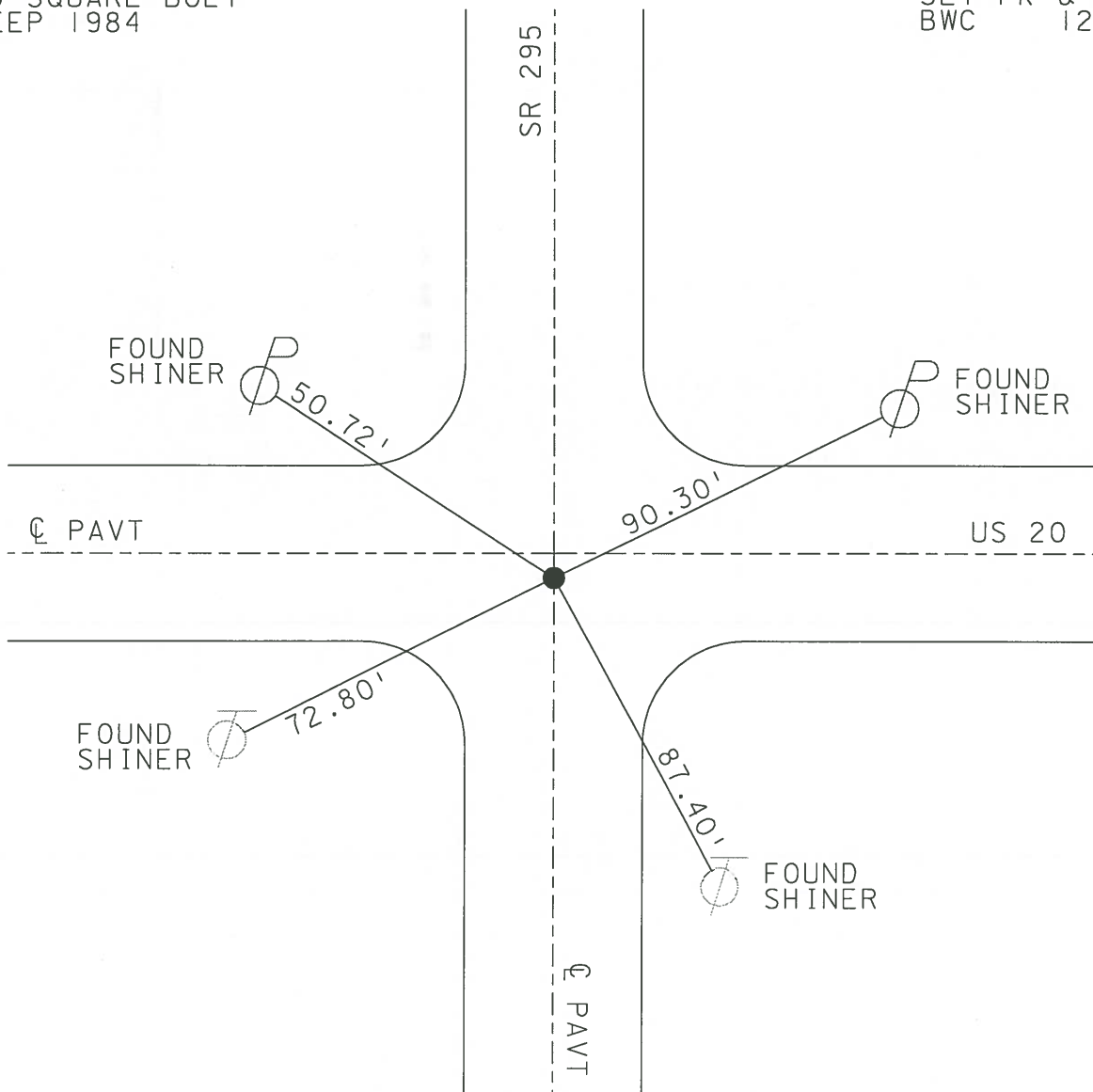
S.L.M. 953+57 on SR 295 / 111+31 on U.S. 20

20	21
28	29



FOUND SQUARE BOLT
2" DEEP 1984

SET PK & WASHER
BWC 12-18-97



O.D.O.T. DISTRICT 2 SURVEY OFFICE

PERSONNEL

REFERENCE NO. 5

SHEET 5 OF 22

NOTES CORDES

H.C. VAN DUSEN

R.C. COX

DATE 6-24-97

WEATHER SUNNY

TEMP. +90

ROUTE LUCAS US#20

COUNTY LUCAS

TOWNSHIP Richfield

SECTION 20-21-28-29

T9 S R 5 E

TYPE MONUMENT Sm R.R. Spike

ON SURFACE - ~~BELOW~~ Yes

LEFT - PAVT. - RIGHT 1.2' Rt Pavt Us.20

TO EDGE PAVEMENT

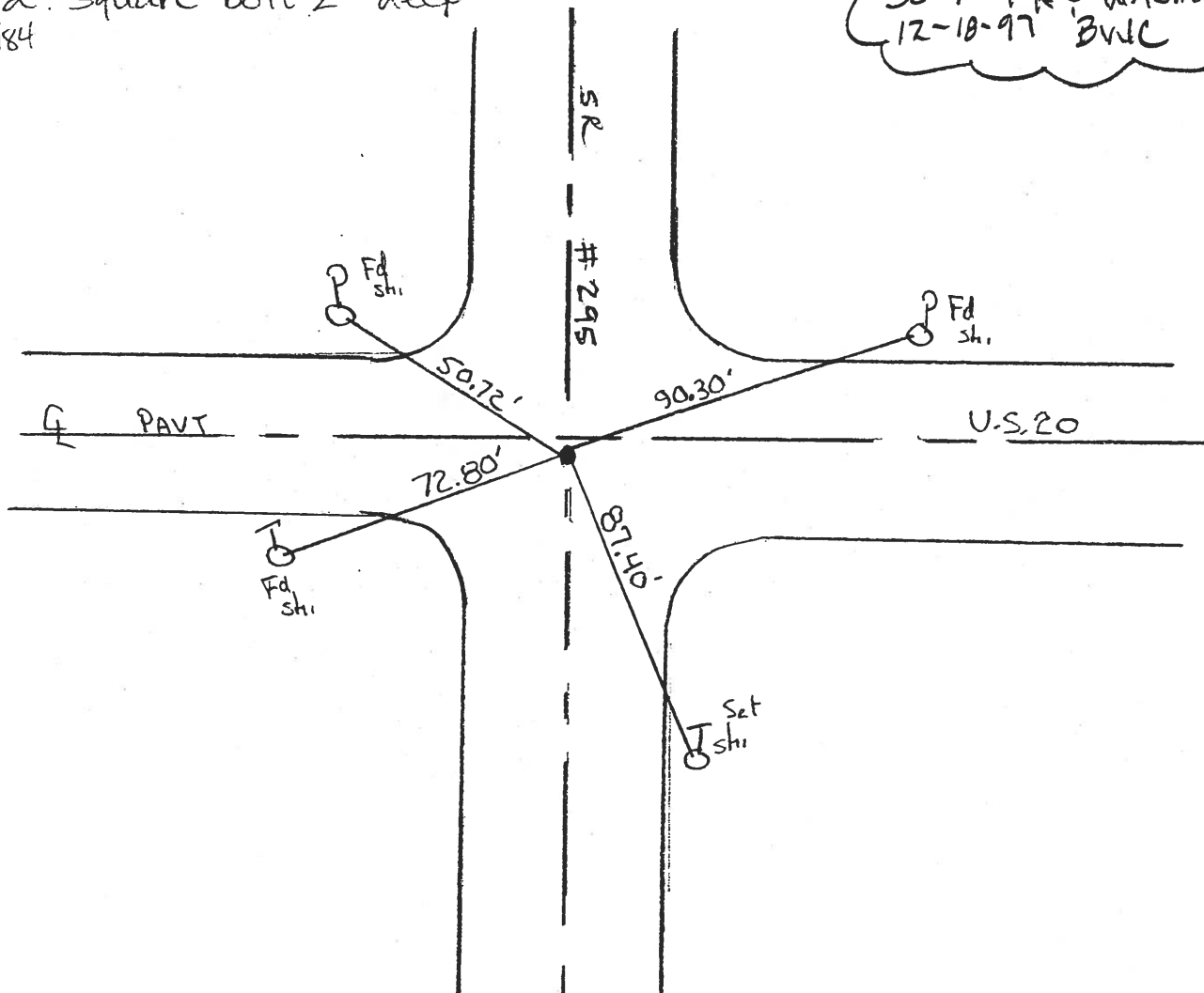
S.L.M. 111+31

20	21
29	28



Fd. Square bolt 2" deep
1984

SET PK 3 WASHER
12-18-97 BWC



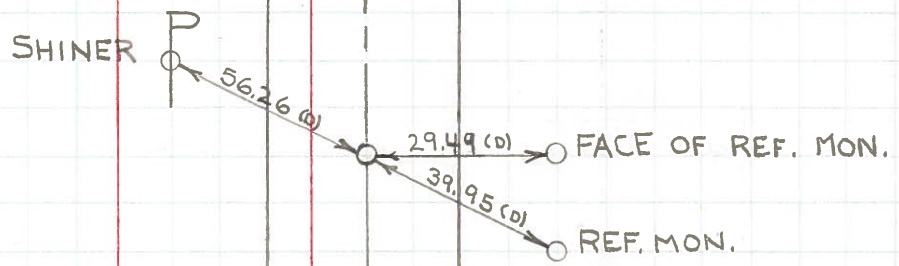
PERSONNEL	TITLE	PERSONNEL	TITLE	COUNTY	DATE	WEATHER	TEMP.
W. DENNO				LUCAS	JULY 19, 1971	FAIR	70±
D. CURTIS				S. R. #295			
D. STEVENS							
R. BRANNAN				SEC.			

DESCRIPTION REFERENCES TO CONTROL POINTS JOB NO.

LEFT CENTER LINE RIGHT

NOTE: FOR REFERENCES TO INTERSECTION OF U.S. #20 AND S.R. #295 - SEE REFERENCE #5 ON U.S. #20

45



S.R. #295

FD. 3/4" IRON PIN 1 1/2" BELOW SURFACE
E-W & SECS. 20 & 21
9.0' TO W. EDGE PVT.
11.1' TO E. EDGE PVT.

PERSONNEL	TITLE	PERSONNEL	TITLE	COUNTY	DATE
<u>Stone</u>	<u>Notes</u>			<u>Lucas</u>	<u>13 June 68</u>
<u>Beck</u>	<u>Flag</u>			S. R. <u># 295</u>	WEATHER <u>Fair</u>
<u>Michalak</u>	<u>Tape</u>			SEC. _____	TEMP. <u>65°</u>
<u>Schroder</u>	<u>Tape</u>				

DESCRIPTION References to Control Points JOB NO. _____

LEFT CENTER LINE RIGHT

