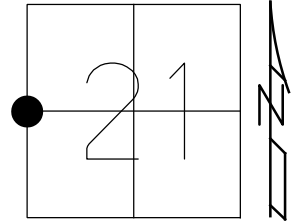


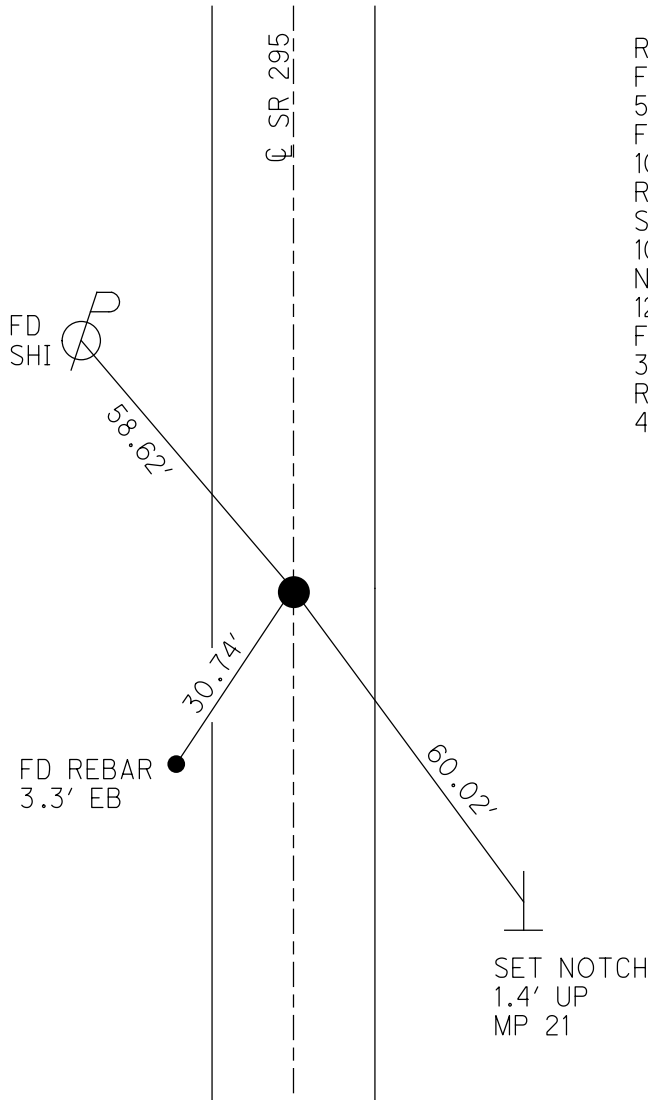
O.D.O.T. DISTRICT 2 SURVEY OFFICE (USE ONLY)

PERSONNEL _____ REFERENCE NO. 45 SHEET 22 OF 24
 NOTES AUBLE DATE 5-7-20 ROUTE SR 295
 H.C. LEU WEATHER BREEZY, CLEAR COUNTY LUCAS
 R.C. BALBAUGH TEMP. 55°F TOWNSHIP RICHFIELD
 DWG BY MAHLER PID 107059 SECTION 21
 T 9 N R 5 E

TYPE MONUMENT MAG/WASHER
 ON SURFACE - ~~BELOW~~ ON
 OFFSET Q PAVEMENT 1.8' LT : ~~RT~~
8.8' TO LT EDGE PAVEMENT
 STATION: 980+19.93



HORZ.DATUM: NAD83 (2011) GEOID: NAVD88-2012A
 GRID: NORTHING: 736164.835 EASTING: 1602881.306



RECORD:
 FD P.K./WASHER
 5/16/05
 FD P.K. NAIL
 10/06/10, MC
 REF45
 SET MAG/WASHER
 10/25/12, SDC
 NEWREF45
 12/13/12, SDC
 FD MAG/WASHER
 3-6-19, JLL
 REF45
 4-9-19, JLL

O.D.O.T. DISTRICT 2 SURVEY OFFICE (USE ONLY)

PERSONNEL _____ REFERENCE NO. 45 SHEET 22 OF 24

NOTES HARBAUGH _____ DATE 7/2/12 ROUTE SR 295
 H.C. HUSS _____ WEATHER FAIR COUNTY LUCAS
 R.C. COUTCHER _____ TEMP. 80° TOWNSHIP RICHFIELD
 CANTERBURY _____ SECTION 21
 T 9 S R 5 E

TYPE MONUMENT P.K./WASHER

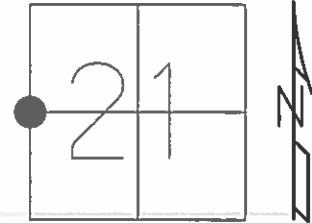
ON SURFACE - ~~BELOW~~ ON _____

LEFT - ☉ PAV'T - ~~RIGHT~~ 1.8'

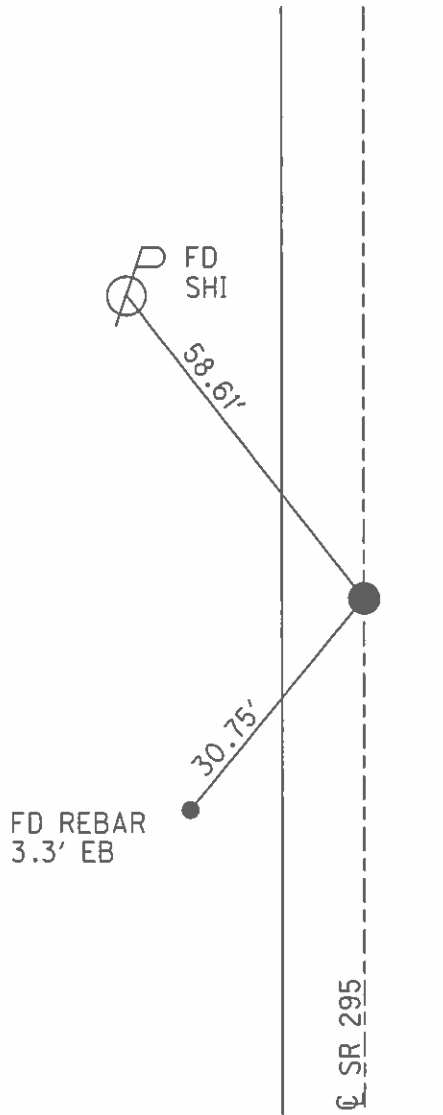
8.8' TO LT EDGE PAVEMENT

S.L.M. 980+20.20

GRID: NORTHING: 736164.808 EASTING: 1602881.216



RECORD:
 FD P.K./WASHER
 5/16/05
 FD PK NAIL
 10/06/10, EAF
 GPS REF 45
 SET MAG/WASHER
 10/25/12, SDC
 GPS, NEWREF45
 12/13/12, SDC

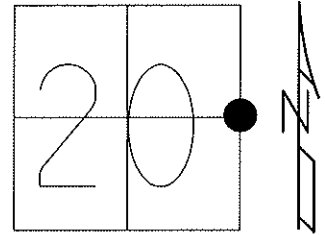


☉ SR 295

O.D.O.T. DISTRICT 2 SURVEY OFFICE (USE ONLY)

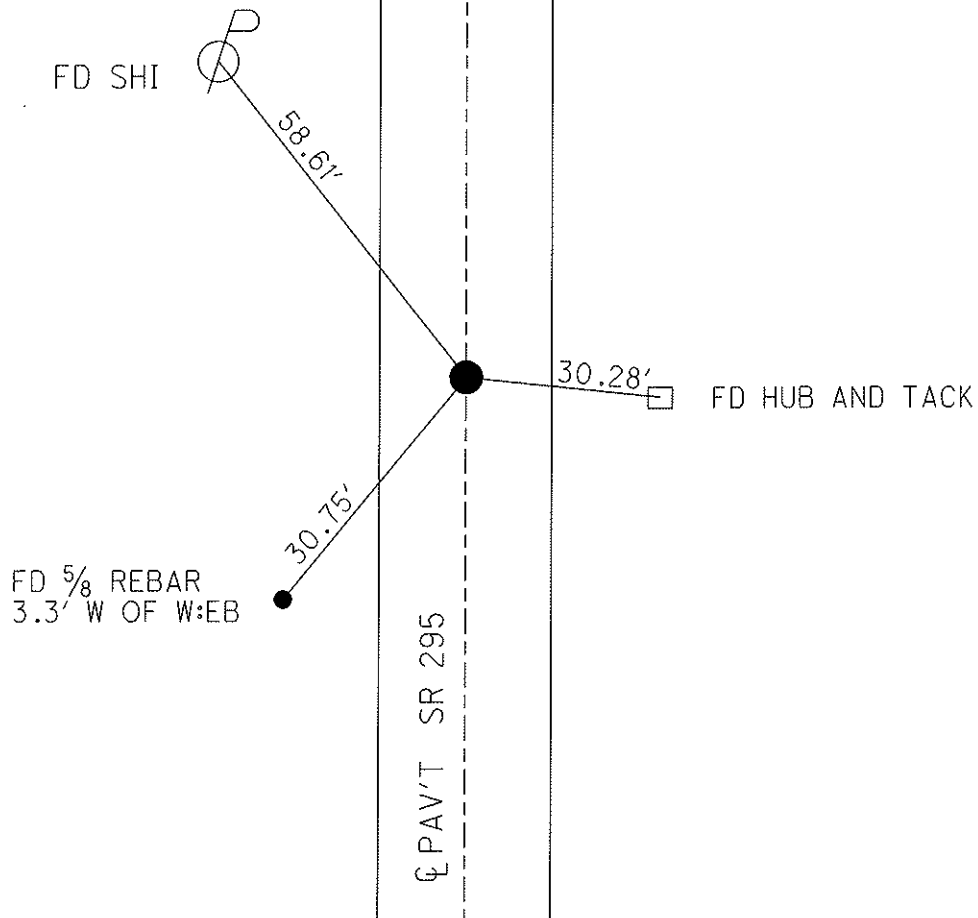
PERSONNEL	REFERENCE NO. <u>45</u>	SHEET <u>22</u> OF <u>24</u>
NOTES HARBAUGH	DATE <u>7-2-12</u>	ROUTE <u>SR#295</u>
H.C. HUSS	WEATHER <u>FAIR</u>	COUNTY <u>LUCAS</u>
R.C. COUTCHER	TEMP. <u>80°F</u>	TOWNSHIP <u>RICHFIELD</u>
<u>CANTERBURY</u>		SECTION <u>20</u>
		T <u>9</u> S R <u>5</u> E

TYPE MONUMENT P.K./WASHER
 ON SURFACE - ~~BELOW~~ ON
 LEFT - ℄ PAV'T - ~~RIGHT~~ 1.8'
8.8' TO LT EDGE PAVEMENT
 S.L.M. 980+20.20
 Grid: Northing: 736164.808 Easting: 1602881.216



RECORD: FD PK/WASHER 5-16-05
 FD PK NAIL 10-06-10 EAF
 GPS REF 45

SET MAG/WASHER
 10/25/12, SDC
 GPS, NEWREF 45
 12/13/12, SDC



O.D.O.T. DISTRICT 2 SURVEY OFFICE

PERSONNEL

REFERENCE NO. 45

SHEET 2 OF 10

NOTES HOMAN

DATE 5-18-05

ROUTE SR 295

H.C. NUHFER

WEATHER SUNNY

COUNTY LUCAS

R.C. HERALD

TEMP. 65°

TOWNSHIP RICHFIELD

SECTION 20

T 9 S R 5 E

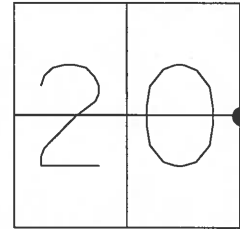
TYPE MONUMENT PK & WASHER

ON SURFACE - ~~BELOW~~ YES

LEFT - Q PAV'T - ~~RIGHT~~ 2.2 FT

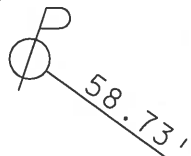
8.0' TO LT EDGE PAVEMENT

S.L.M. 980+14



FOUND 5-16-05

SET SHINER E/S



SR 295

29.29' REF. MON.

Q PAVEMENT

Resurfaced 2005

O.D.O.T. DISTRICT 2 SURVEY OFFICE

PERSONNEL

REFERENCE NO. 45

SHEET 1 OF 9

NOTES LOEHRKE / CORDES

H.C. VAN Dusen

R.C. Cox

DATE 6-24-97

WEATHER SUNNY

TEMP. +95°

ROUTE S.R. 295

COUNTY LUCAS

TOWNSHIP Richfield

SECTION 20

T 9 S R 5 E

TYPE MONUMENT Sm R.P. Spike

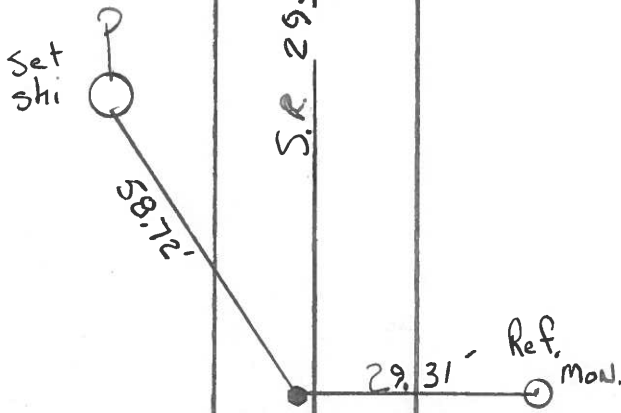
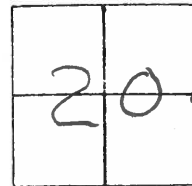
ON SURFACE - BELOW Yes

LEFT- & PAV'T. - RIGHT 2.2'

8.2' TO Lt EDGE PAVEMENT

S.L.M. 980 +14

Set P.K./WASHER
8-28-97
C.L.



Resurfaced 1997

O.D.O.T. DISTRICT 2 SURVEY OFFICE

SHEET 1 OF

County Lucas S.R. 295

Date 29 June 83

Township Richfield

Weather Cloudy

Section 20

Temp. 65°

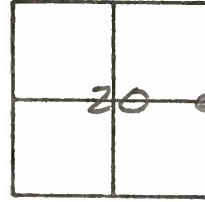
T N, R E

Personnel I. Stone

P. Newsee

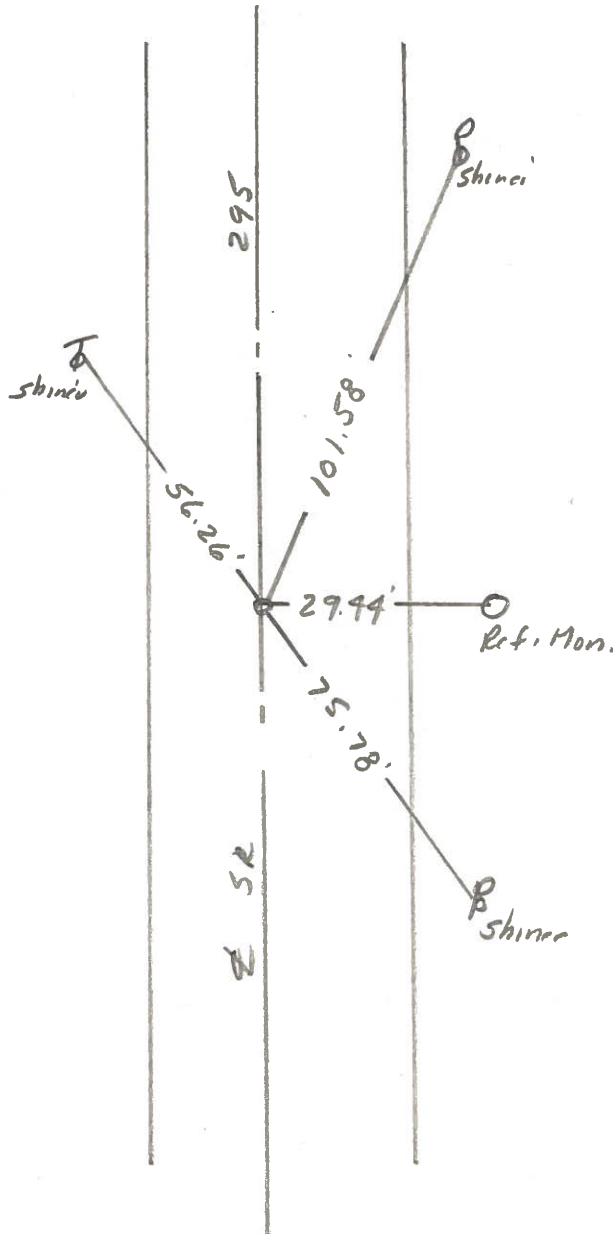
R. Michalak

D. Curtis



S.L.H. 918+75±

REF. NO. 45



Fd. Small RR Spk.
E 1/4 Cor. Sec. 20
11.4' to E. edge pot.
8.9' to W. edge pot.

Set Small RR Spk.

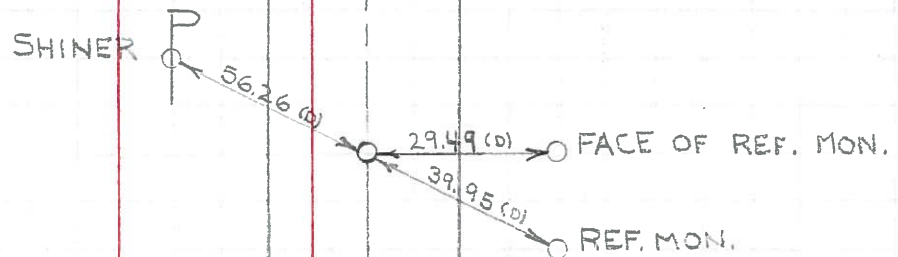
PERSONNEL	TITLE	PERSONNEL	TITLE
W. DENNO			
D. CURTIS			
D. STEVENS			
R. BRANNAN			

COUNTY LUCAS DATE JULY 19, 1971
 S. R. #295 WEATHER FAIR
 SEC. _____ TEMP. 70±

DESCRIPTION REFERENCES TO CONTROL POINTS JOB NO. _____
 LEFT CENTER LINE RIGHT

NOTE: FOR REFERENCES TO INTERSECTION OF U.S. #20 AND S.R. #295 - SEE REFERENCE ^{#5} ON U.S. #20.

45



⊥ S.R. #295

FD. 3/4" IRON PIN 1 1/2"
 BELOW SURFACE
 E-W ⊥ SECS. 20 & 21
 9.0' TO W. EDGE PVT.
 11.1' TO E. EDGE PVT.

PERSONNEL	TITLE	PERSONNEL	TITLE	COUNTY	DATE
Stone	Notes			Lucas	15 June 68
Beck	Flag			S. R. # 295	WEATHER Fair
Michalak	Tape			SEC.	TEMP. 65°
Schroder	Tape				

DESCRIPTION References to Control Points JOB NO. _____
 LEFT CENTER LINE RIGHT

