

O.D.O.T. DISTRICT 2 SURVEY OFFICE (USE ONLY)

PERSONNEL

REFERENCE NO. 46

SHEET 23 OF 24

NOTES RHOADES DATE 11/15/23
 H.C. NIESE WEATHER SUNNY
 R.C. ASTON TEMP. 43°
MILLER

ROUTE SR 295
 COUNTY LUCAS
 TOWNSHIP RICHFIELD
 SECTION 21

DWG BY RHOADES PID 105618

T 9 N R 5 E

TYPE MONUMENT MAG/WASHER

ON SURFACE - ~~BELOW~~ ON

OFFSET ☉ PAVEMENT 1.0' ~~ET~~ : RT

- TO - EDGE PAVEMENT

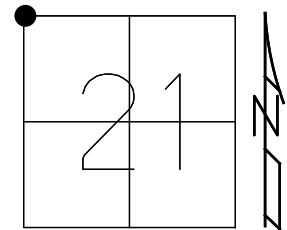
STATION: 1137+31.20

HORIZ.DATUM: NAD83 (2011)

GEOID: NAVD88 2018

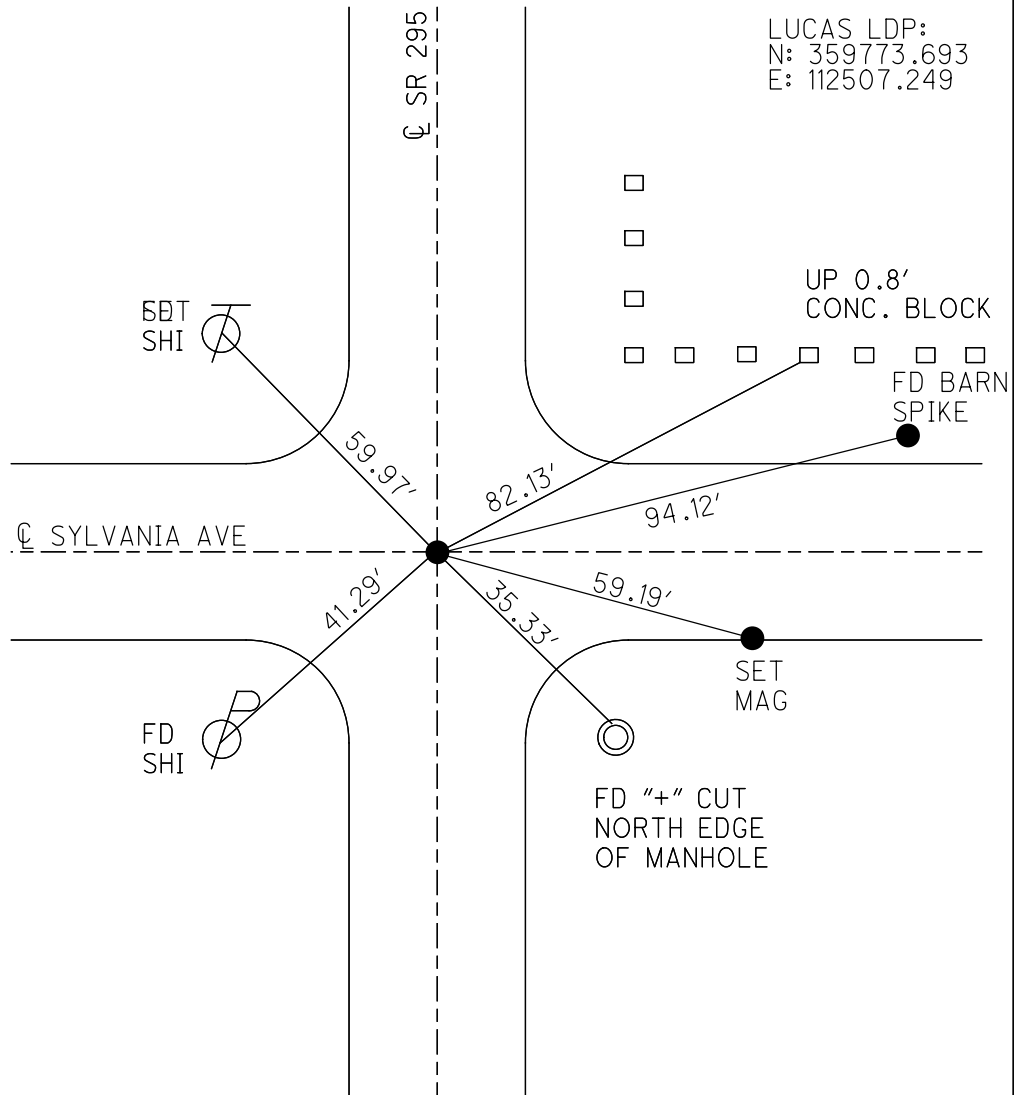
GRID: NORTHING: 738813.337

EASTING: 1602861.595



RECORD:
 FD P.K./WASHER
 5/16/05
 FD P.K. NAIL
 10/06/10, MC
 REF 46
 SET MAG/WASHER
 10/25/12, SDC
 NEWREF 46
 12/13/12, SDC
 FD P.K./WASHER
 REF 46
 4-9-19, JLL
 FD MAG/WASHER
 REF 46
 9/1/23,
 11/15/23, TDN

LUCAS LDP:
 N: 359773.693
 E: 112507.249



O.D.O.T. DISTRICT 2 SURVEY OFFICE (USE ONLY)

PERSONNEL

REFERENCE NO. 46

SHEET 23 OF 24

NOTES AUBLE
 H.C. LEU
 R.C. BALBAUGH

DATE 5-7-20
 WEATHER BREEZY CLEAR
 TEMP. 55°F

ROUTE SR 295
 COUNTY LUCAS
 TOWNSHIP RICHFIELD
 SECTION 21
 T 9 N R 5 E

DWG BY MAHLER PID 107059

TYPE MONUMENT MAG/WASHER

ON SURFACE - ~~BELOW~~ ON

OFFSET 0 PAVEMENT 1.0' LT : RT

- TO - EDGE PAVEMENT

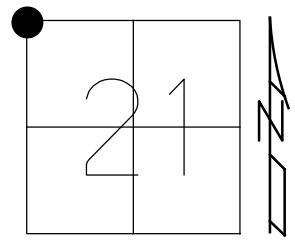
STATION: 1006+68.53

HORIZ.DATUM: NAD83 (2011)

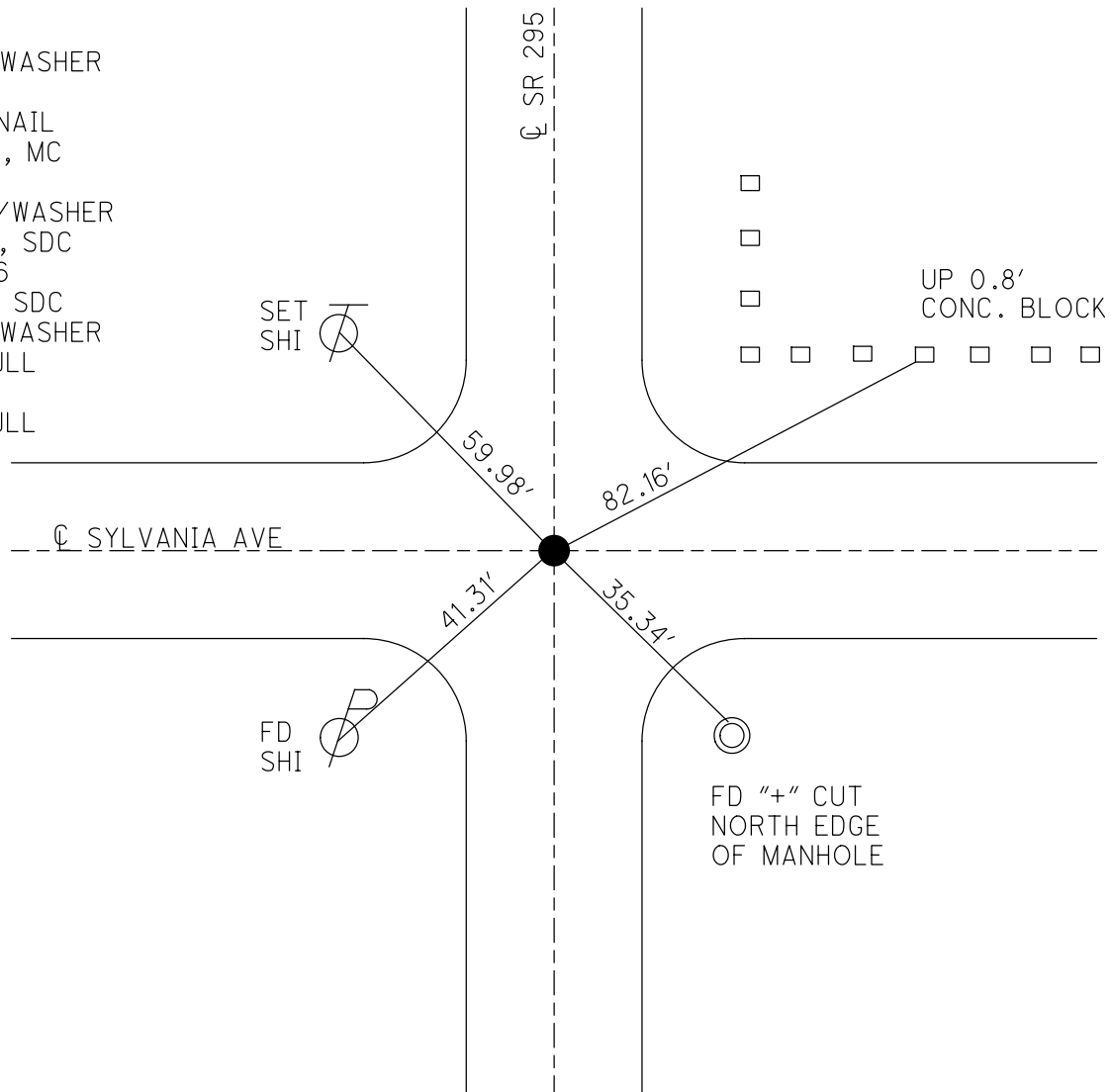
GEOID: NAVD88-2012A

GRID: NORTHING: 738813.367

EASTING: 1602861.671



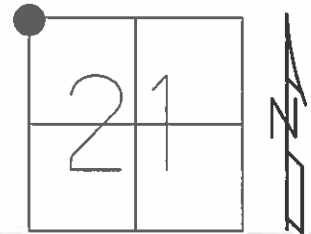
RECORD:
 FD P.K./WASHER
 5/16/05
 FD P.K. NAIL
 10/06/10, MC
 REF 46
 SET MAG/WASHER
 10/25/12, SDC
 NEWREF 46
 12/13/12, SDC
 FD P.K./WASHER
 3-6-19, JLL
 REF 46
 4-9-19, JLL



O.D.O.T. DISTRICT 2 SURVEY OFFICE (USE ONLY)

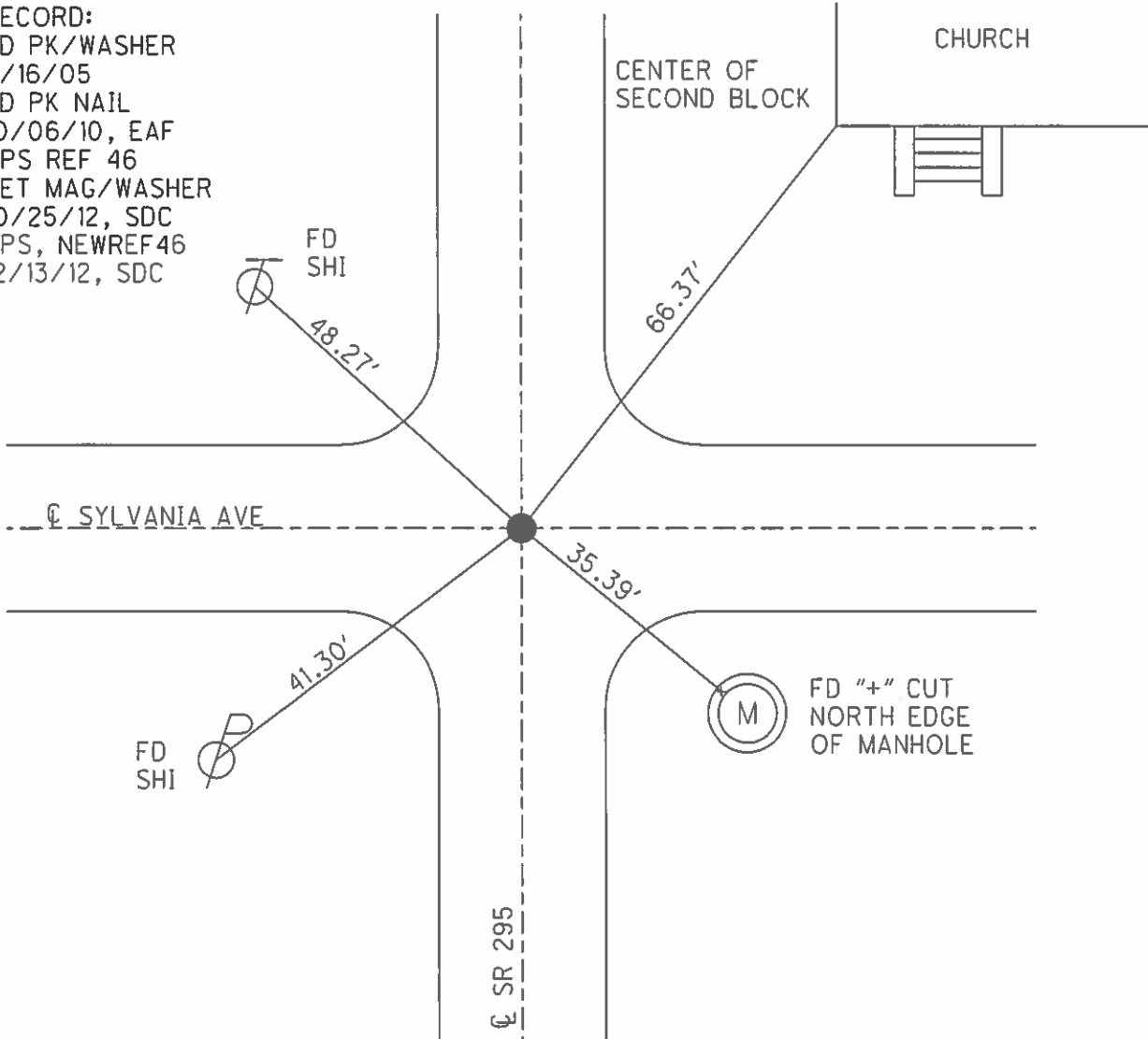
PERSONNEL _____ REFERENCE NO. 46 SHEET 23 OF 24
 NOTES HARBAUGH DATE 7/2/12 ROUTE SR 295
 H.C. HUSS WEATHER FAIR COUNTY LUCAS
 R.C. COUTCHER TEMP. 80° TOWNSHIP RICHFIELD
CANTERBURY SECTION 21
 T 9 S R 5 E

TYPE MONUMENT P.K./WASHER
 ON SURFACE - ~~BELOW~~ ON _____
~~LEFT~~ - ☉ PAV'T - RIGHT 1.0' , 0.5' N. ☉ W.
 _____ TO _____ EDGE PAVEMENT
 S.L.M. 1006+68.79



GRID: NORTHING: 738813.373 EASTING: 1602861.558

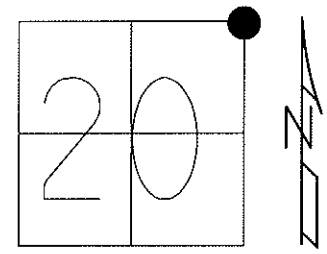
RECORD:
 FD PK/WASHER
 5/16/05
 FD PK NAIL
 10/06/10, EAF
 GPS REF 46
 SET MAG/WASHER
 10/25/12, SDC
 GPS, NEWREF 46
 12/13/12, SDC



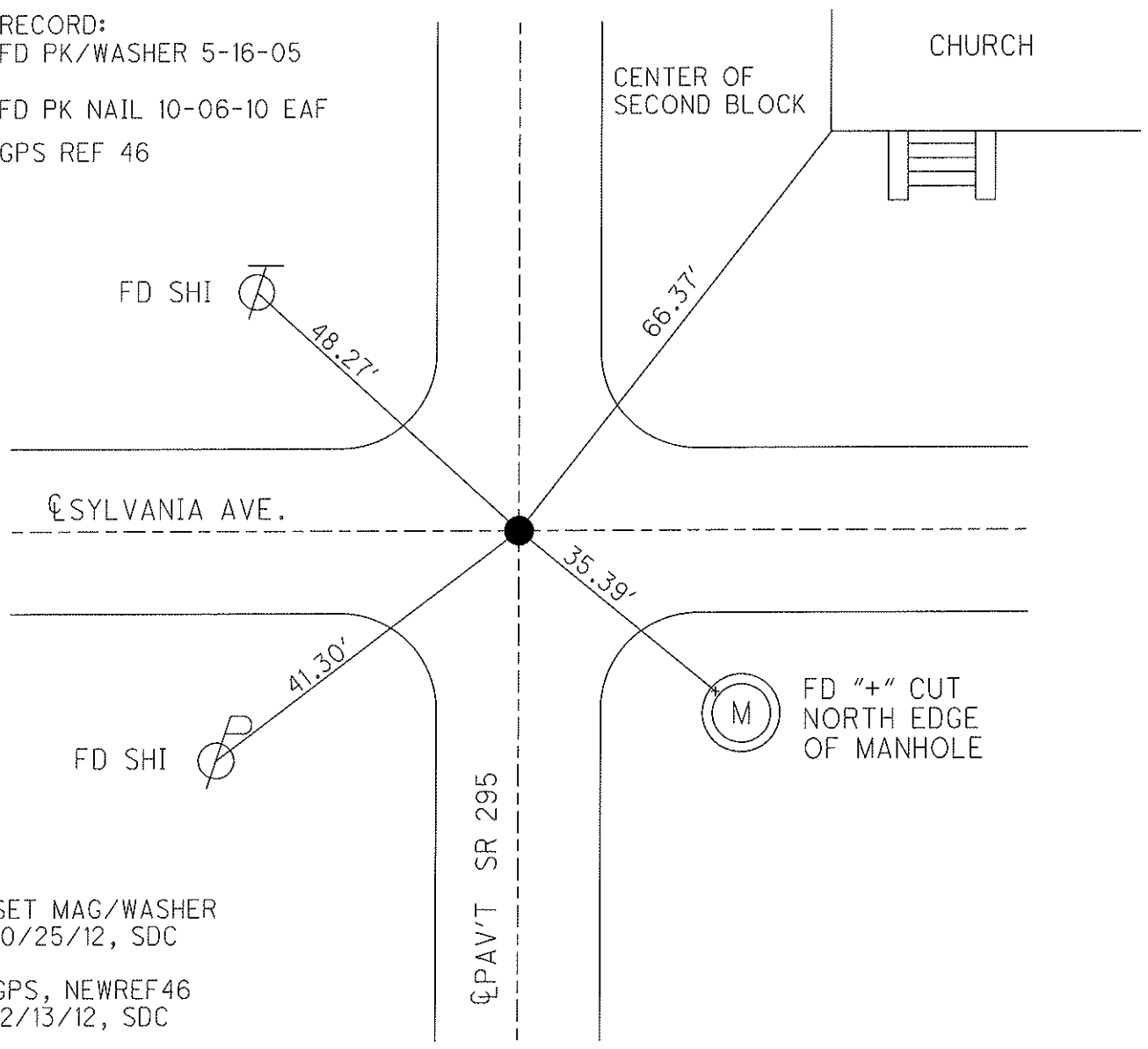
O.D.O.T. DISTRICT 2 SURVEY OFFICE (USE ONLY)

PERSONNEL	REFERENCE NO. <u>46</u>	SHEET <u>23</u> OF <u>24</u>
NOTES HARBAUGH _____	DATE <u>7-2-12</u>	ROUTE <u>SR#295</u>
H.C. HUSS _____	WEATHER <u>FAIR</u>	COUNTY <u>LUCAS</u>
R.C. COUTCHER _____	TEMP. <u>80°F</u>	TOWNSHIP <u>RICHFIELD</u>
CANTERBURY _____		SECTION <u>20</u>
		T <u>9</u> S R <u>5</u> E

TYPE MONUMENT P.K./WASHER
 ON SURFACE - ~~BELOW~~ ON _____
~~LEFT~~ - Q PAV'T - RIGHT 1.0', 0.5' N. Q W.
 _____ TO _____ EDGE PAVEMENT
 S.L.M. 1006+68.79
 Grid: Northing: 738813.373 Easting: 1602861.558



RECORD:
 FD PK/WASHER 5-16-05
 FD PK NAIL 10-06-10 EAF
 GPS REF 46



SET MAG/WASHER
 10/25/12, SDC
 GPS, NEWREF46
 12/13/12, SDC

O.D.O.T. DISTRICT 2 SURVEY OFFICE

PERSONNEL

REFERENCE NO. 46

SHEET 3 OF 10

NOTES HOMAN

DATE 5-18-05

ROUTE SR 295

H.C. NUHFER

WEATHER SUNNY

COUNTY LUCAS

R.C. HERALD

TEMP. 65°

TOWNSHIP RICHFIELD

SECTION 20

T 9 S R 5 E

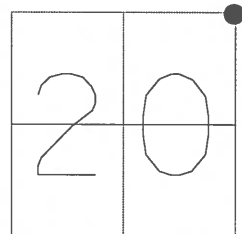
TYPE MONUMENT PK & WASHER

ON SURFACE - ~~BELOW~~ YES

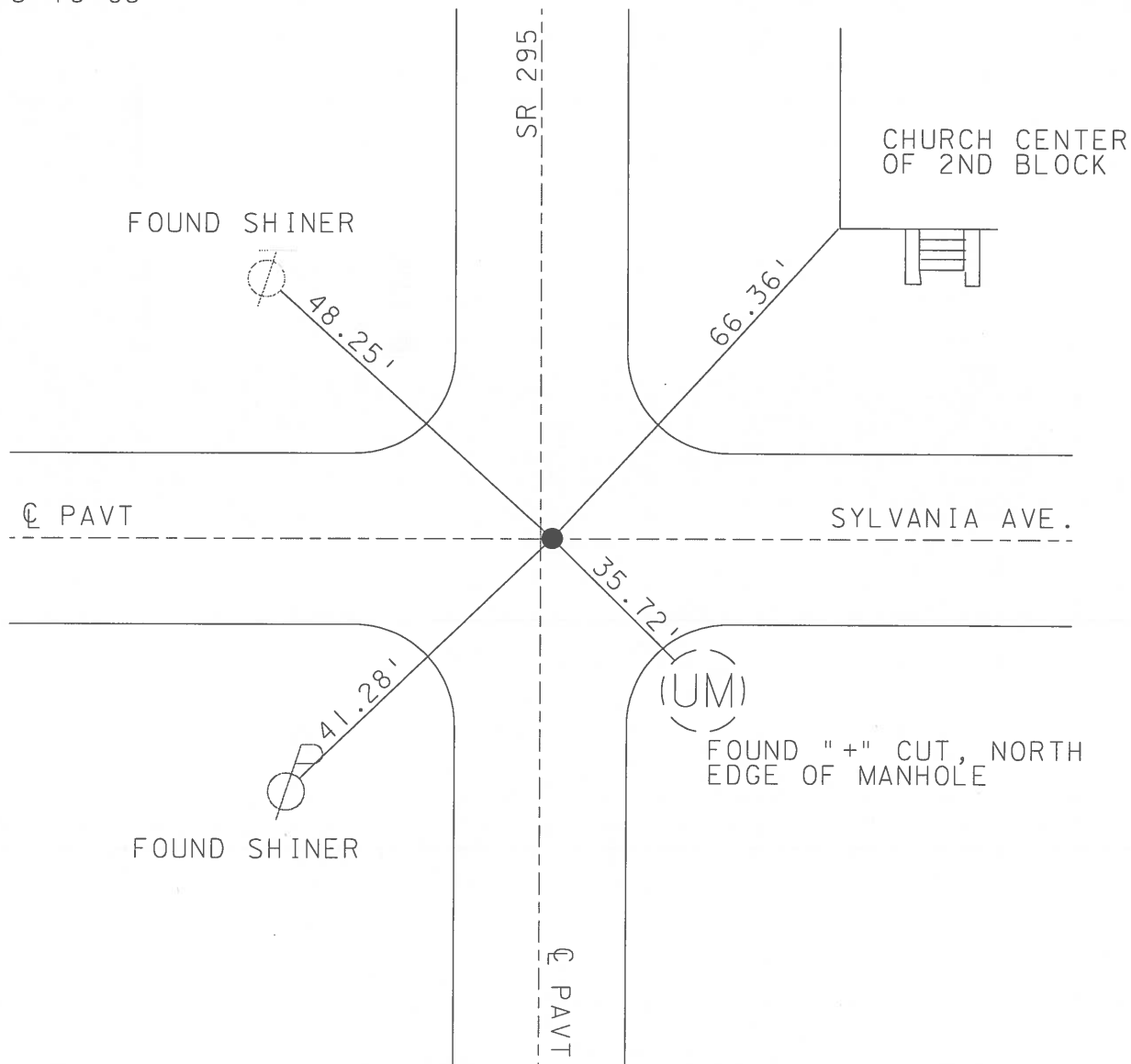
~~LEFT~~ - Q PAV'T - RIGHT 1.1' RT

TO EDGE PAVEMENT

S.L.M. 1006+70



FOUND 5-16-05



O.D.O.T. DISTRICT 2 SURVEY OFFICE

PERSONNEL _____

REFERENCE NO. 46

SHEET 2 OF 9

NOTES LOHRKE / CORDS

H.C. VAN DUSEN

DATE 6-24-97

ROUTE S.R. 295

R.C. Cox

WEATHER Sunny

COUNTY Lucas

TEMP. +95

TOWNSHIP Richfield

SECTION _____

Set P.K./WASHER
8-28-97
e.l.

T 9 S R S E

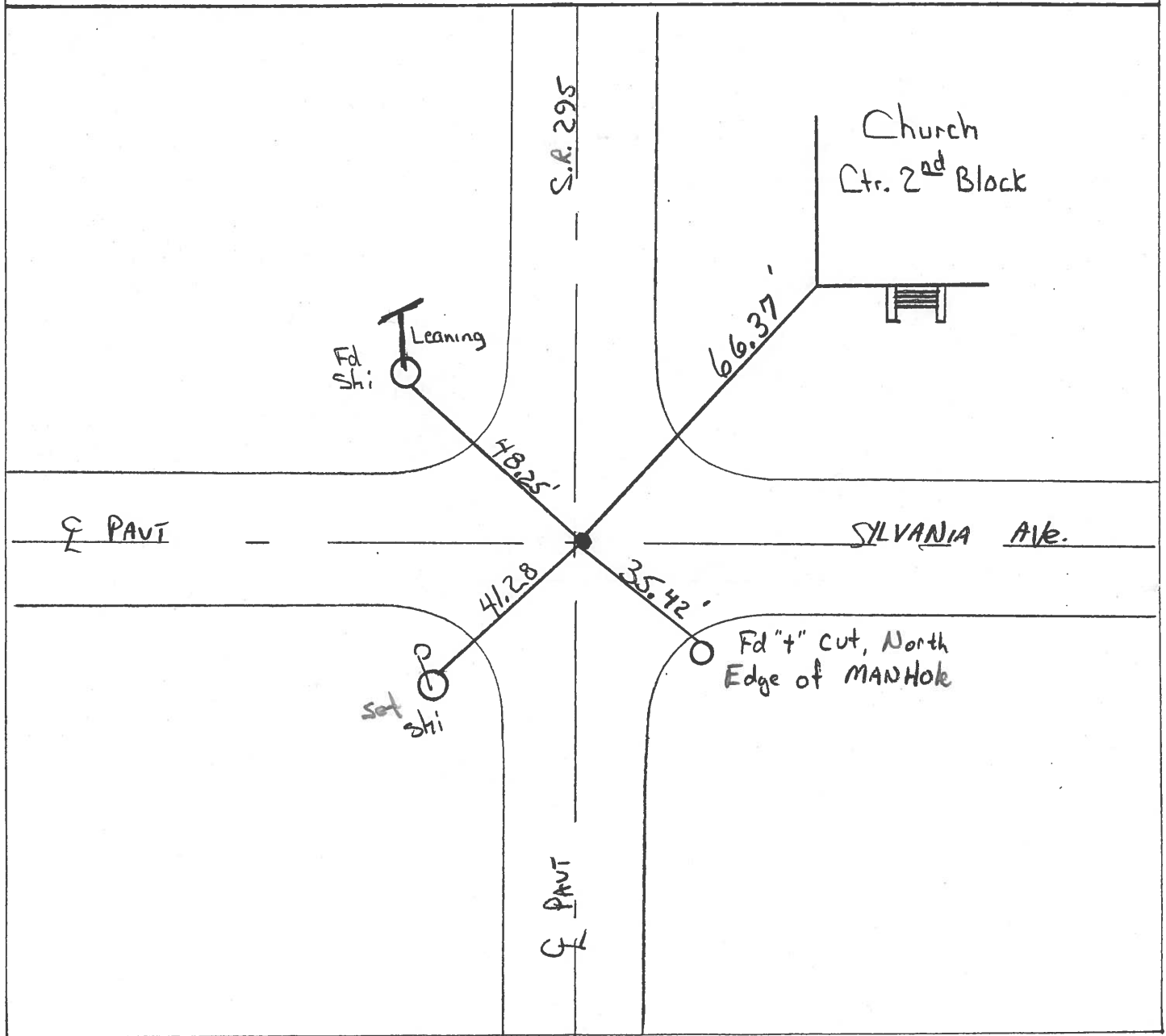
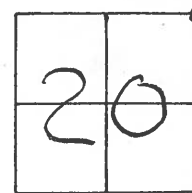
TYPE MONUMENT Sm. R.R. Spike

ON SURFACE - BELOW Yes

~~LEFT~~ - C PAV'T. - RIGHT 1.1' Rt

TO EDGE PAVEMENT

S.L.M.: 1006+70



County Lucas S.R. 295

Date 29 June 83

Township Richfield

Weather Cloudy

Section 16-17-20-21

Temp. 65°

T N, R E

Personnel I. Stone

P. Newser

R. Michalak

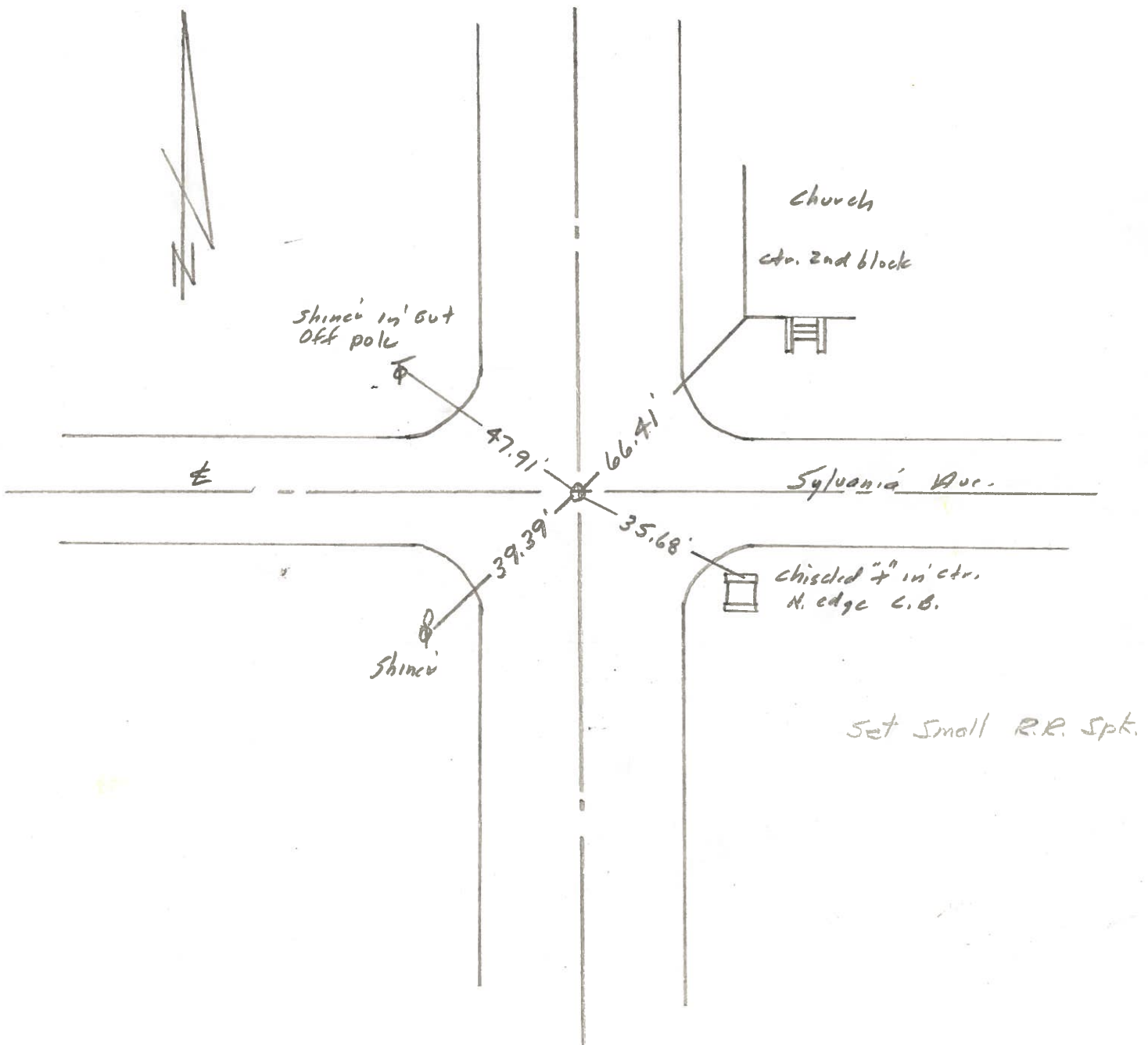
D. Curtis

17	16
20	21



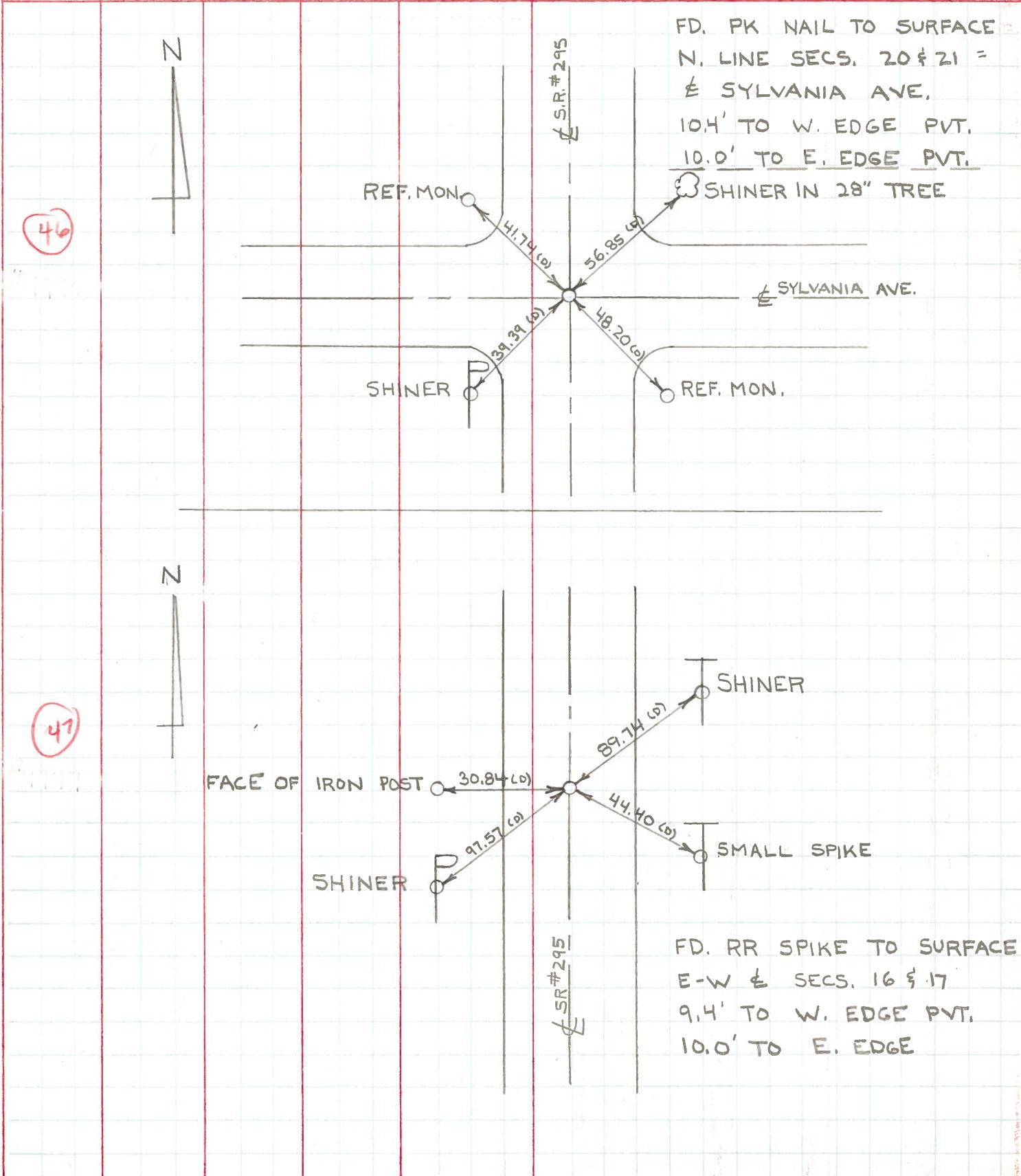
S.L.M. Sta. 945+30±

REF. NO. 46



PERSONNEL	TITLE	PERSONNEL	TITLE	COUNTY	LUCAS	DATE	JULY 20, 1971
W. DENNO				S. R.	# 295	WEATHER	FAIR
D. CURTIS				SEC.		TEMP.	70±
D. STEVENS							
R. BRANNAN							

DESCRIPTION	REFERENCES TO CONTROL POINTS	JOB NO.
	LEFT CENTER LINE RIGHT	



PERSONNEL	TITLE	PERSONNEL	TITLE	COUNTY	DATE
Stone	Notes			Lucas	14 June 68
Beck	Flag			S. R. #295	WEATHER Fair
Michalak	Tape			SEC.	TEMP. 60°
Schroder	Tape				

DESCRIPTION References to Control Points JOB NO. _____
 LEFT CENTER LINE RIGHT

