

O.D.O.T. DISTRICT 2 SURVEY OFFICE (USE ONLY)

PERSONNEL

REFERENCE NO. 48

SHEET 1 OF 8

NOTES RHOADES

DATE 11/15/23

ROUTE SR 295

H.C. NIESE

WEATHER SUNNY

COUNTY LUCAS

R.C. ASTON

TEMP. 43°

TOWNSHIP RICHFIELD

MILLER

DWG BY RHOADES

PID 105618

SECTION 9

T 9 N R 5 E

TYPE MONUMENT MAG/WASHER

ON SURFACE - ~~BELOW~~ ON

OFFSET \varnothing PAVEMENT 2.4' LT : RT

- TO - EDGE PAVEMENT

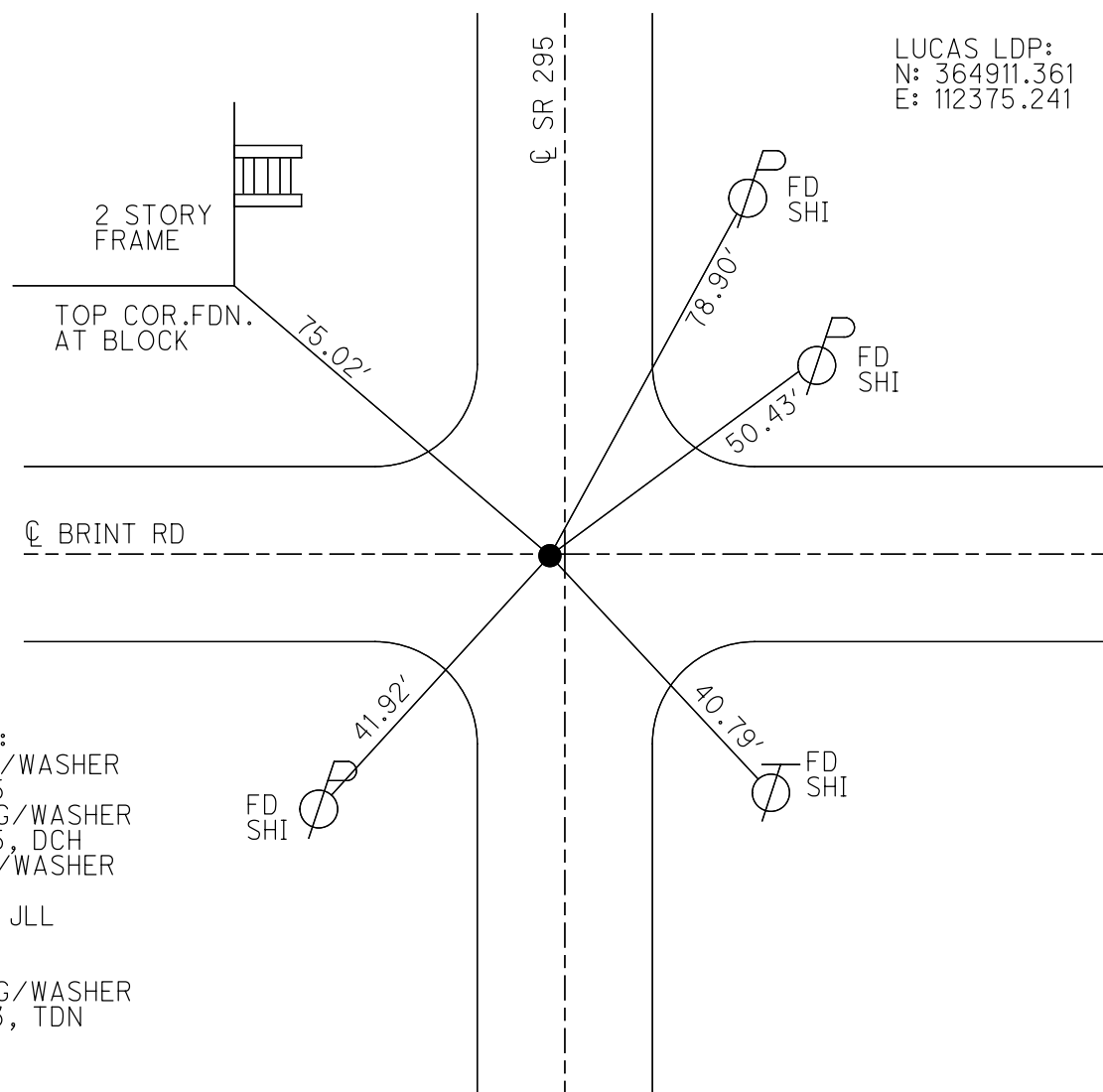
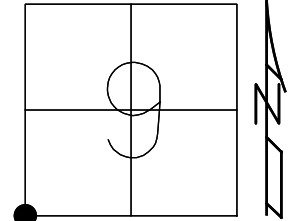
STATION: 1188+70.34

HORZ.DATUM: NAD83 (2011)

GEOID: NAVD88 2018

GRID: NORTHING: 743952.157

EASTING: 1602797.225



LUCAS LDP:
N: 364911.361
E: 112375.241

RECORD:
FD P.K./WASHER
5/17/05
SET MAG/WASHER
7/13/05, DCH
FD MAG/WASHER
REF48
3-6-19, JLL
REF48
9/1/23,
SET MAG/WASHER
11/15/23, TDN

O.D.O.T. DISTRICT 2 SURVEY OFFICE (USE ONLY)

PERSONNEL _____

REFERENCE NO. 48

SHEET 1 OF 8

NOTES AUBLE

DATE 5-7-20

ROUTE SR 295

H.C. LEU

WEATHER BREEZY CLEAR

COUNTY LUCAS

R.C. BALBAUGH

TEMP. 55°F

TOWNSHIP RICHFIELD

SECTION 9

DWG BY MAHLER PID 107059

T 9 N R 5 E

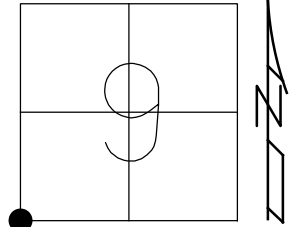
TYPE MONUMENT MAG/WASHER

ON SURFACE - ~~BELOW~~ ON

OFFSET \odot PAVEMENT 2.4' LT : ~~RT~~

- TO - EDGE PAVEMENT

STATION: 1058+07.74

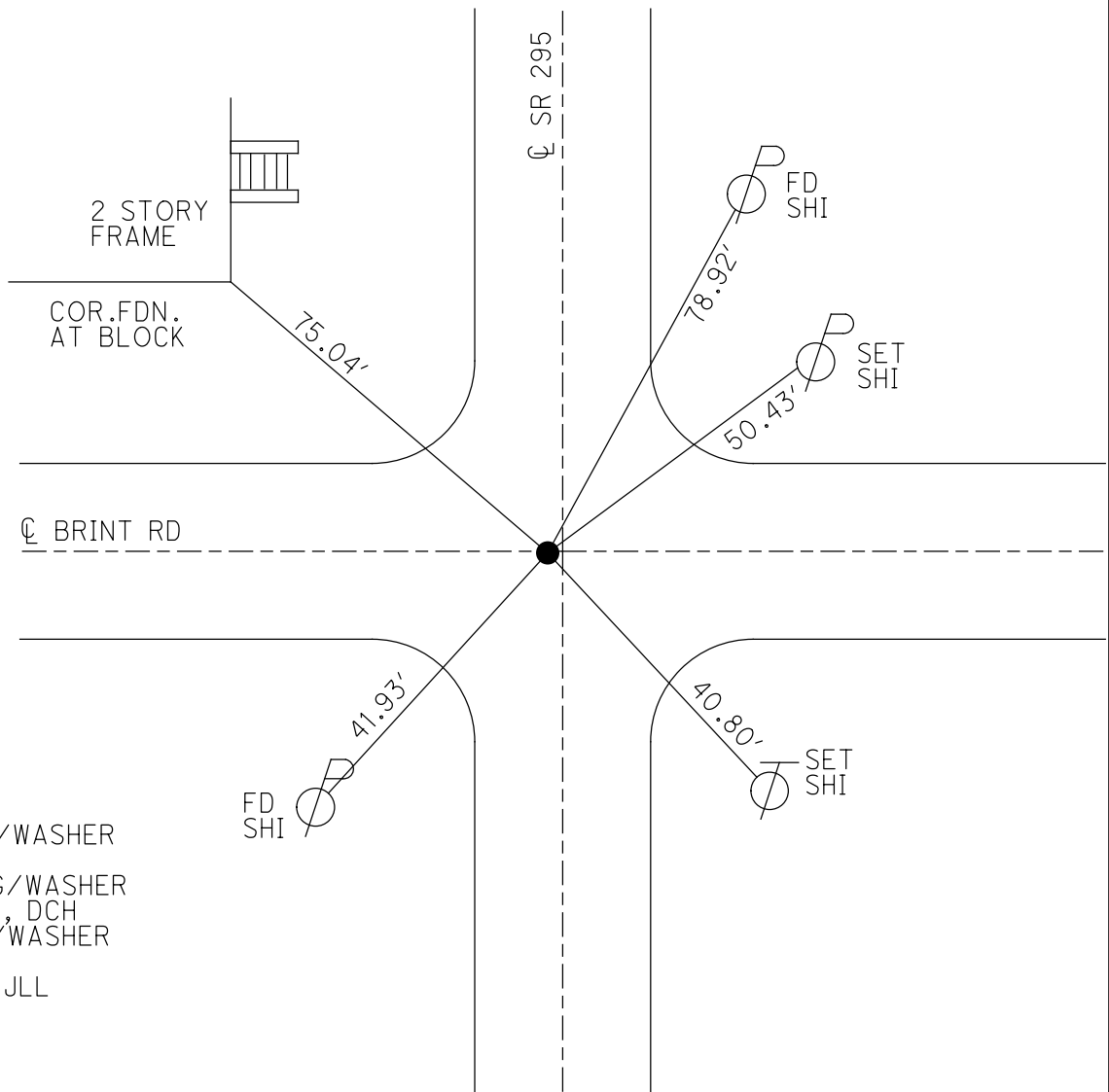


HORIZ.DATUM: NAD83 (2011)

GEOID: NAVD88-2012A

GRID: NORTHING: 743952.172

EASTING: 1602797.288

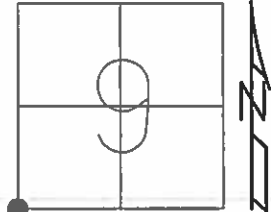


RECORD:
 FD P.K./WASHER
 5/17/05
 SET MAG/WASHER
 7/13/05, DCH
 FD MAG/WASHER
 REF48
 3-6-19, JLL

O.D.O.T. DISTRICT 2 SURVEY OFFICE (USE ONLY)

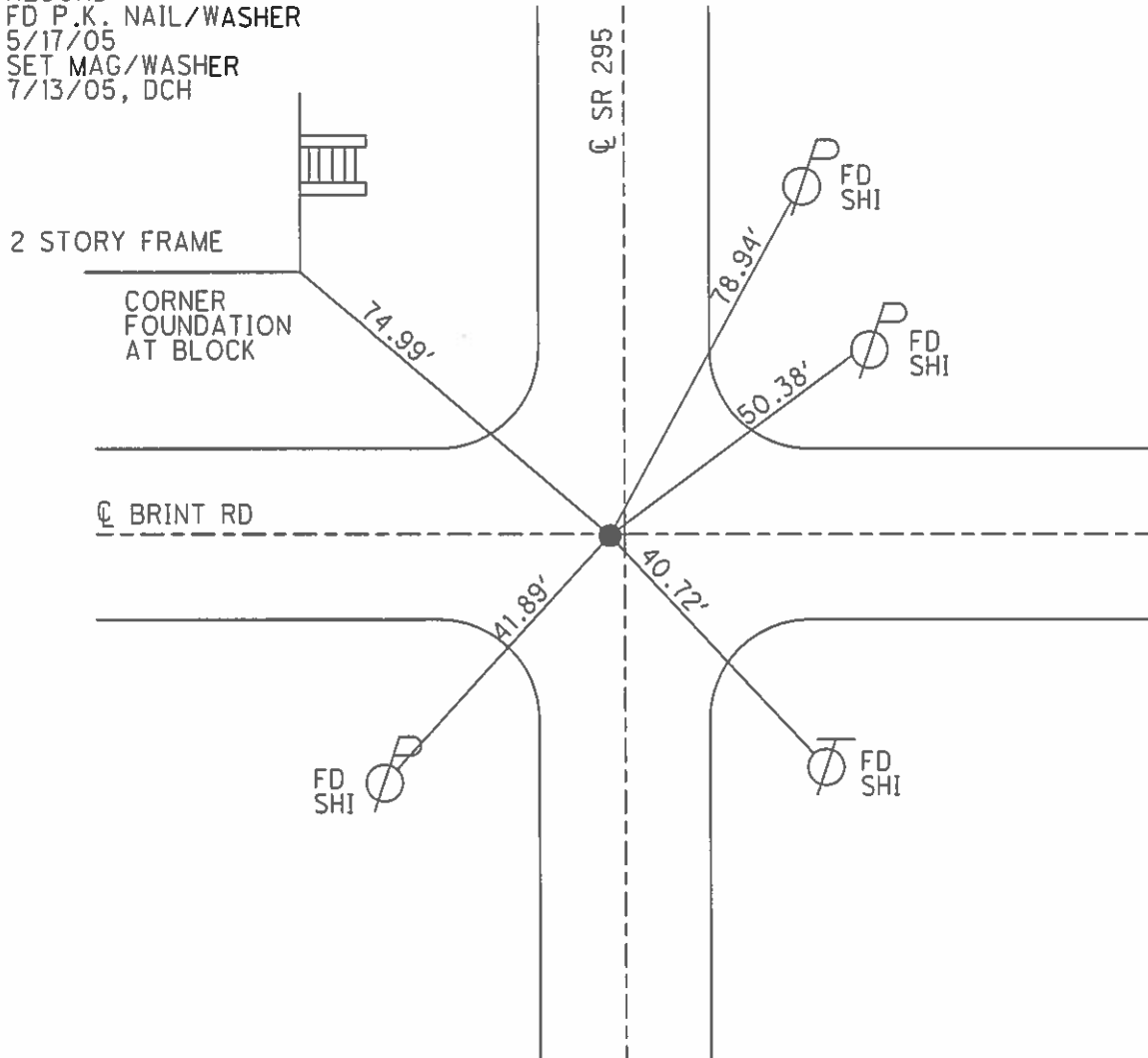
PERSONNEL	REFERENCE NO.	48	SHEET	1	OF	8
NOTES	HOMAN	DATE	5/18/05	ROUTE	SR 295	
H.C.	NUHFER	WEATHER	SUNNY	COUNTY	LUCAS	
R.C.	HERALD	TEMP.	65°	TOWNSHIP	RICHFIELD	
				SECTION	9	
				T	9	N
				R	5	E

TYPE MONUMENT MAG/WASHER
 ON SURFACE - ~~BELOW~~ ON
 LEFT - ☉ PAV'T - ~~RIGHT~~ 2.4'
TO - EDGE PAVEMENT
 S.L.M. 1058+20



Grid: Northing: Easting:

RECORD:
 FD P.K. NAIL/WASHER
 5/17/05
 SET MAG/WASHER
 7/13/05, DCH



O.D.O.T. DISTRICT 2 SURVEY OFFICE

PERSONNEL

REFERENCE NO. 48

SHEET 1 OF 8

NOTES HOMAN

DATE 5-18-05

ROUTE SR 295

H.C. NUHFER

WEATHER SUNNY

COUNTY LUCAS

R.C. HERALD

TEMP. 65°

TOWNSHIP RICHFIELD

SECTION 17

T 9 S R 5 E

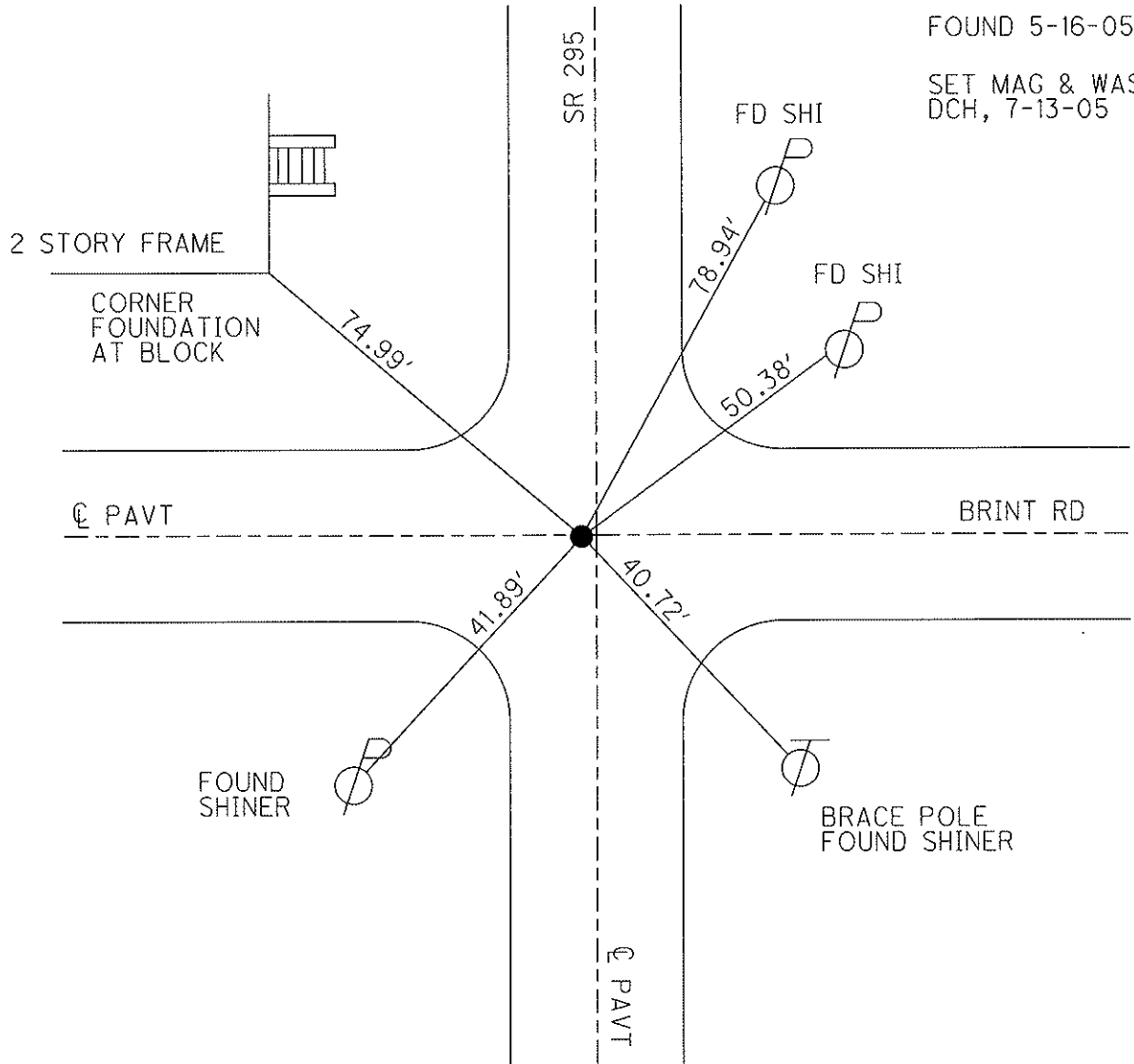
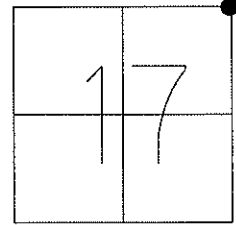
TYPE MONUMENT PK & WASHER

ON SURFACE - ~~BELOW~~ ON

LEFT - ☉ PAV'T - ~~RIGHT~~ 2.4'

TO EDGE PAVEMENT

S.L.M. 1058+20



O.D.O.T. DISTRICT 2 SURVEY OFFICE

PERSONNEL

REFERENCE NO. 48

SHEET 4 OF 9

NOTES LOHRKE / CORDS

H.C. VAN DUSEN

R.C. COX

DATE 6-24-97

WEATHER HOT !!!

TEMP. +97°

ROUTE S.R. 295

COUNTY LUCAS

TOWNSHIP Richfield

SECTION 17

T 9 S R 5 E

Set P.K. / WASHER
8-28-97
C.L.

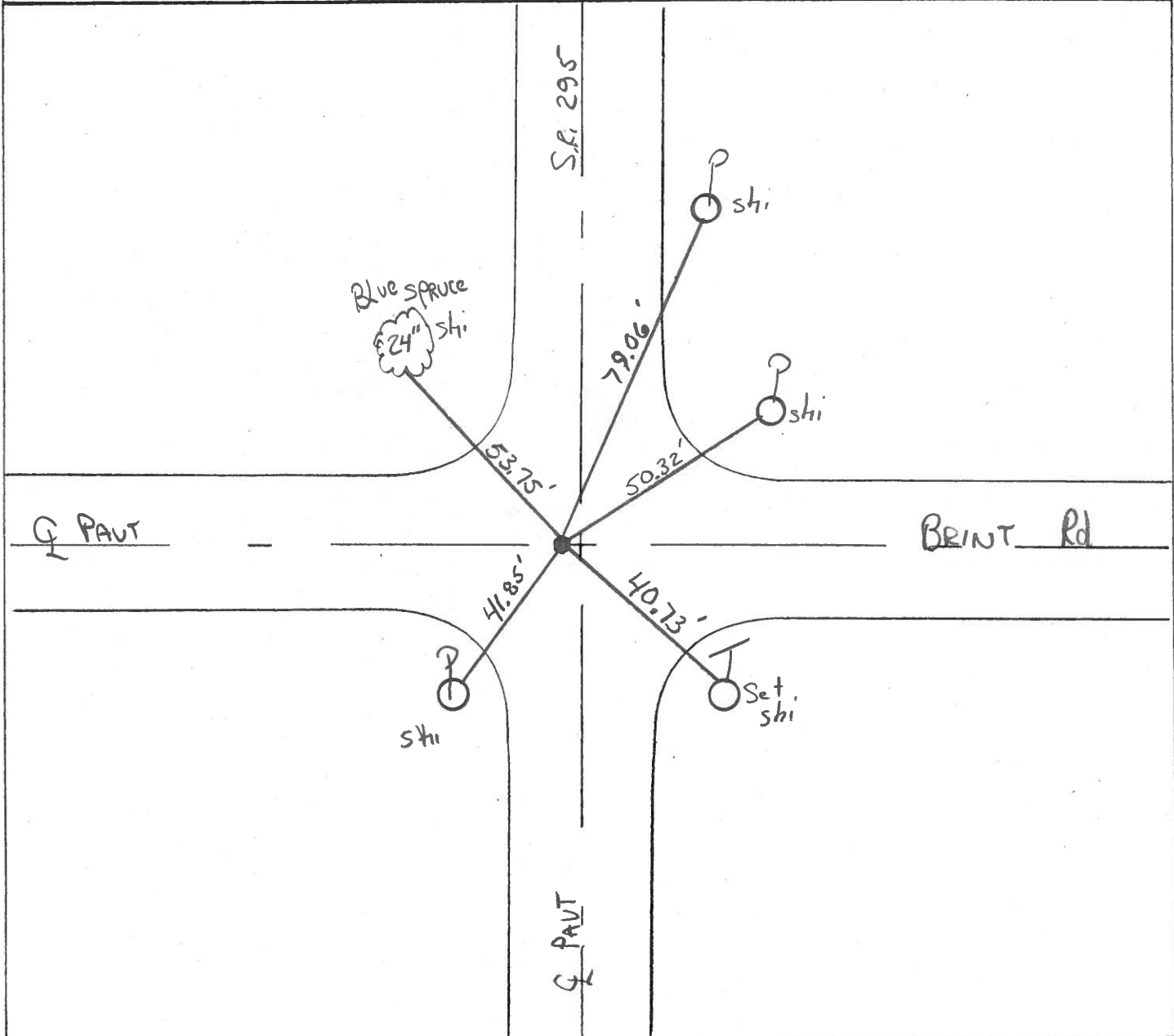
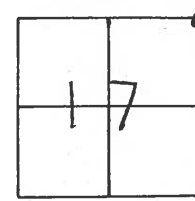
TYPE MONUMENT P.K. NAIL

ON SURFACE - BELOW Yes

LEFT - Q PAV'T. - RIGHT 2.4' LI

TO EDGE PAVEMENT

S.L.M. 1058+20



O.D.O.T. DISTRICT 2 SURVEY OFFICE

SHEET 7 OF

County Lucas S.R. 295

Date 29 June 83

Township Richfield

Weather Cloudy

Section 8-9-17-16

Temp. 65°

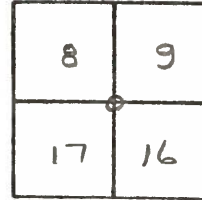
T N, R E

Personnel L. Stone

P. Neusey

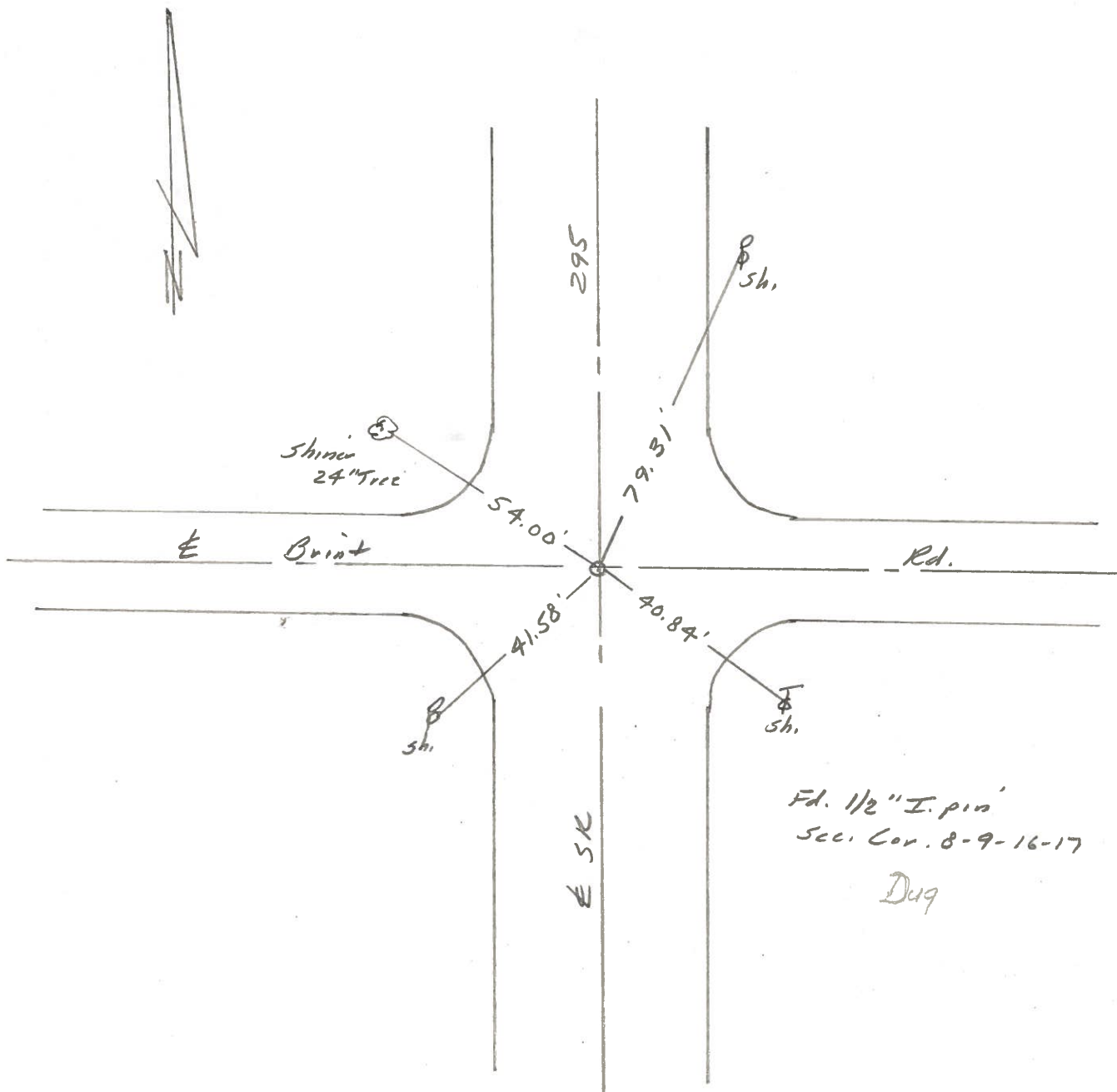
R. Michalak

D. Curtis



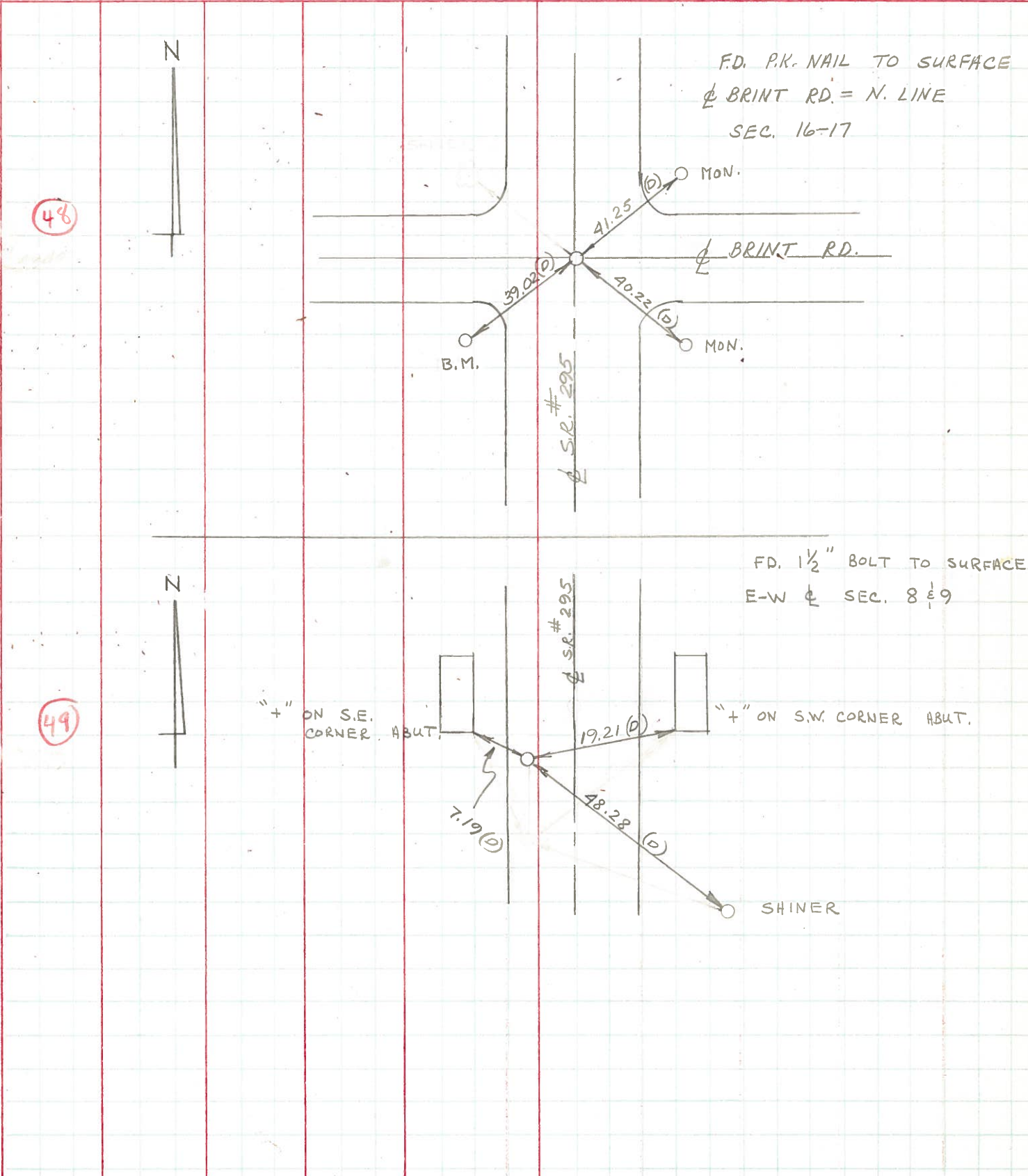
SLM Sta. 996+60±

REF. NO. 78



PERSONNEL	TITLE	PERSONNEL	TITLE	COUNTY	DATE
W. DENNO				LUCAS	JULY 20, 1971
D. CURTIS				S. R. #295	WEATHER FAIR
D. STEVENS				SEC.	TEMP. 70±
R. BRANNAN					

DESCRIPTION	REFERENCES TO CONTROL POINTS	JOB NO.
	LEFT CENTER LINE RIGHT	



PERSONNEL	TITLE	PERSONNEL	TITLE	COUNTY	DATE
Stone	Notes			Lucas	17 June 68
Beck	Flag			S. R. #295	WEATHER Fair
Michaelst	Tape			SEC.	TEMP. 60°
Schroder	Tape				

DESCRIPTION: References to Central Points JOB NO. _____

