

O.D.O.T. DISTRICT 2 SURVEY OFFICE (USE ONLY)

PERSONNEL

REFERENCE NO. 49

SHEET 2 OF 8

NOTES RHOADES
 H.C. NIESE
 R.C. ASTON
MILLER

DATE 11/15/23
 WEATHER SUNNY
 TEMP. 43°

ROUTE SR 295
 COUNTY LUCAS
 TOWNSHIP RICHFIELD
 SECTION 9
 T 9 N R 5 E

DWG BY RHOADES PID 105618

TYPE MONUMENT MAG/WASHER

ON SURFACE - ~~BELOW~~ ON

OFFSET \odot PAVEMENT 7' LT : ~~RT~~
3.3' TO LT EDGE PAVEMENT

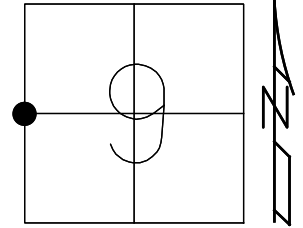
STATION: 1215+69.59

HORZ.DATUM: NAD83 (2011)

GEOID: NAVD88 2018

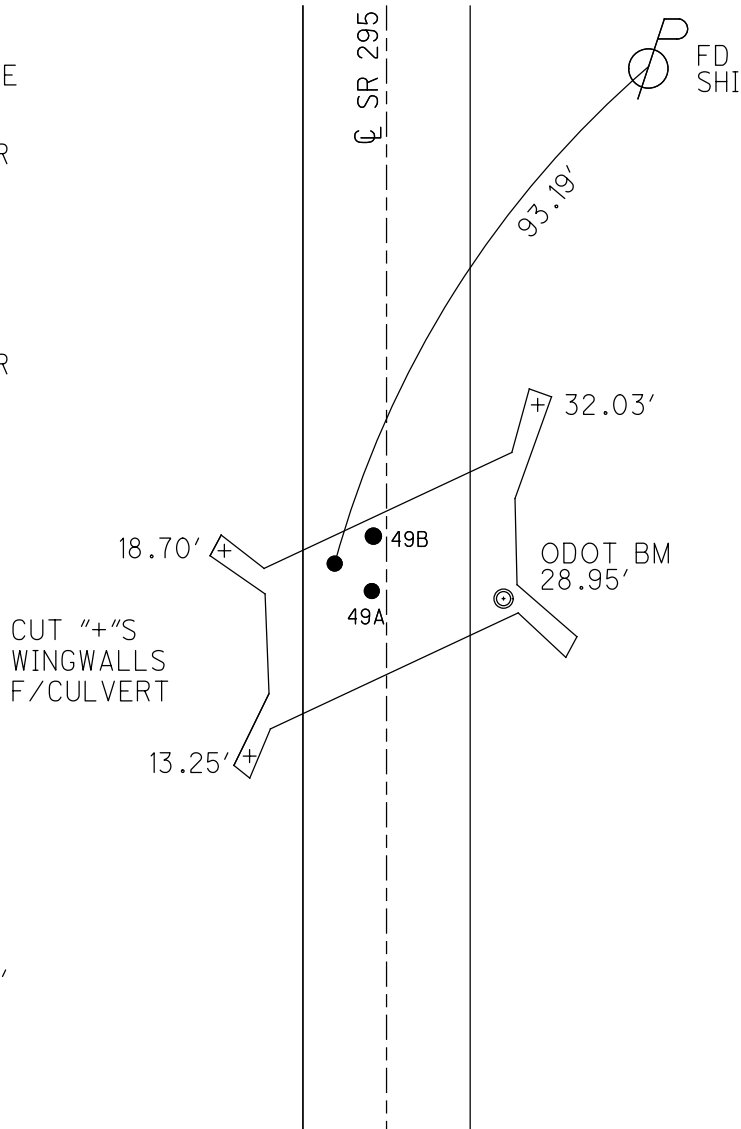
GRID: NORTHING: 746651.148

EASTING: 1602761.819



RECORD:
 EAST/WEST 1/2 LINE
 FD P.K./WASHER
 5/17/05
 SET MAG/WASHER
 7/13/05, DCH
 FD MAG/WASHER
 REF49
 3-6-19, JLL
 FD MAG/WASHER
 REF49
 9/1/23,
 SET MAG/WASHER
 11/15/23, TDN

LUCAS LDP:
 N: 367609.722
 E: 112304.311



DIST.
 49-49A = 6.67'
 49A-49B = 1.45'
 49-49B = 6.80'

O.D.O.T. DISTRICT 2 SURVEY OFFICE (USE ONLY)

PERSONNEL

REFERENCE NO. 49

SHEET 2 OF 8

NOTES JAMES DATE 4-9-19
 H.C. LEU WEATHER SUNNY
 R.C. JAMES TEMP. 55°F

ROUTE SR 295
 COUNTY LUCAS
 TOWNSHIP RICHFIELD
 SECTION 9

DWG BY MAHLER PID 107059

T 9 N R 5 E

TYPE MONUMENT MAG/WASHER

ON SURFACE - ~~BELOW~~ ON

OFFSET \varnothing PAVEMENT 7' LT : ~~RT~~

3.3' TO LT EDGE PAVEMENT

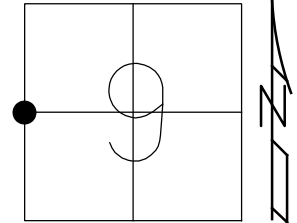
STATION: 1085+06.96

HORZ. DATUM: NAD83 (2011)

GEOID: NAVD88-2012A

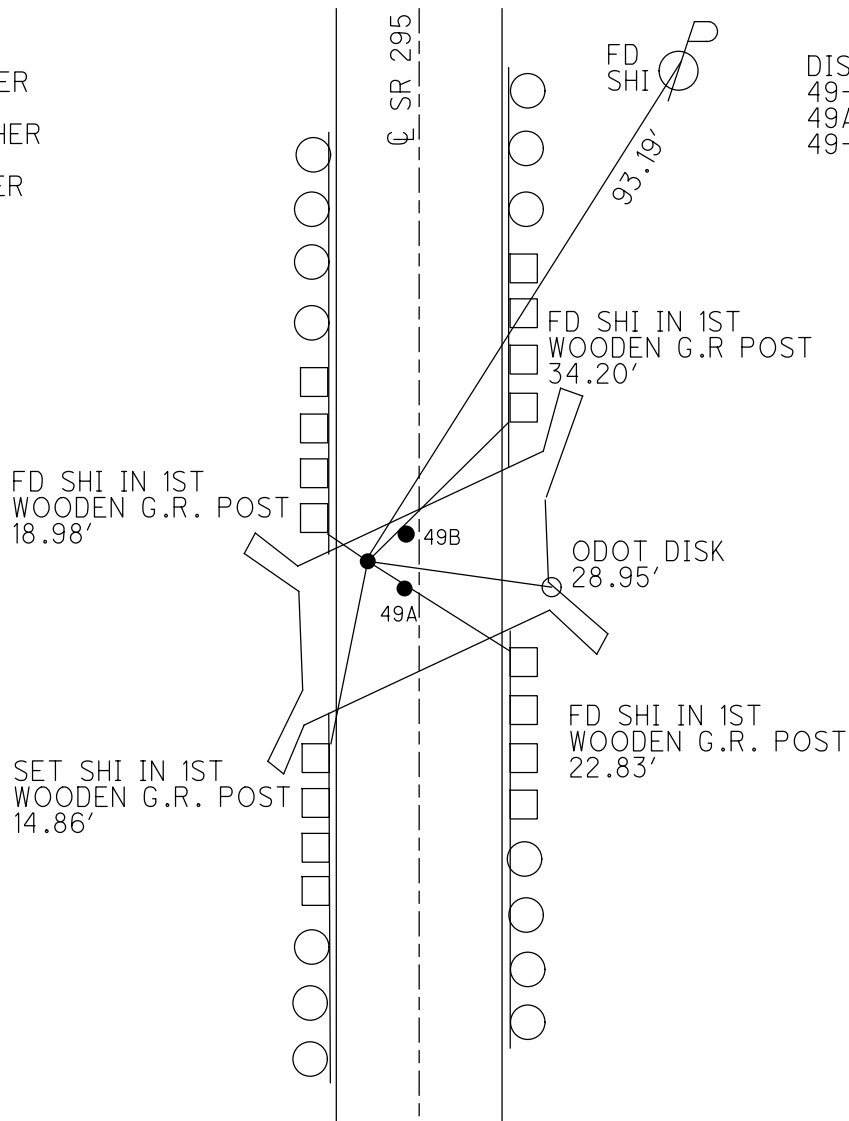
GRID: NORTHING: 746651.161

EASTING: 1602761.886



RECORD:
 FD P.K./WASHER
 5/17/05
 SET MAG/WASHER
 7/13/05, DCH
 FD MAG/WASHER
 REF 49
 3-6-19, JLL

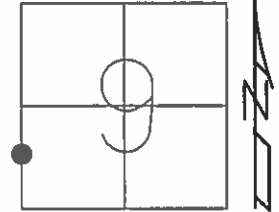
DIST.
 49-49A = 6.68'
 49A-49B = 1.46'
 49-49B = 6.81'



O.D.O.T. DISTRICT 2 SURVEY OFFICE (USE ONLY)

PERSONNEL	REFERENCE NO.	<u>49</u>	SHEET	<u>2</u>	OF	<u>8</u>
NOTES	HOMAN	DATE	<u>5/18/05</u>	ROUTE	<u>SR 295</u>	
H.C.	<u>NUHFER</u>	WEATHER	<u>SUNNY</u>	COUNTY	<u>LUCAS</u>	
R.C.	<u>HERALD</u>	TEMP.	<u>65°</u>	TOWNSHIP	<u>RICHFIELD</u>	
				SECTION	<u>9</u>	
				T	<u>9</u>	R
					<u>N</u>	<u>E</u>

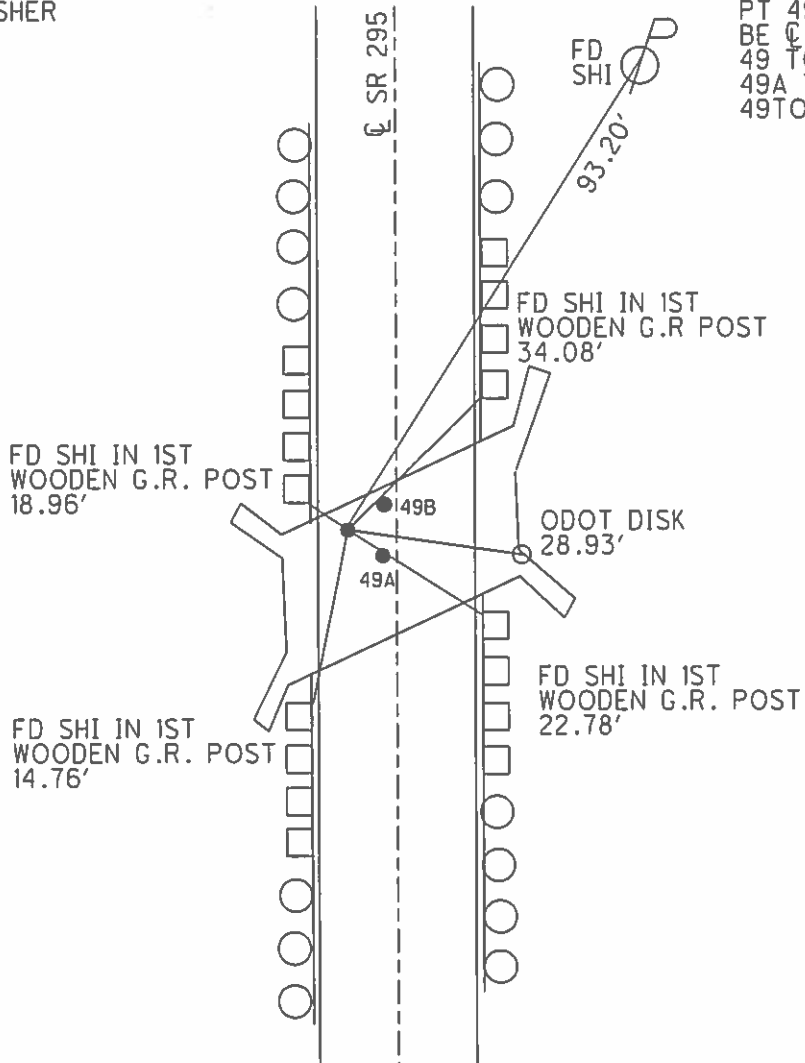
TYPE MONUMENT MAG/WASHER
 ON SURFACE - ~~BELOW~~ ON
 LEFT - CL PAV'T - ~~RIGHT~~ 7'
3.3' TO LT EDGE PAVEMENT
 S.L.M. 1085+26



Grid: Northing: _____ Easting: _____

RECORD:
 FD P.K. NAIL/WASHER
 5/17/05
 SET MAG/WASHER
 7/13/05, DCH

NOTE:
 PT 49 BELIEVED TO
 BE CL R/W
 49 TO 49A = 6.65'
 49A TO 49B = 1.46'
 49 TO 49B = 6.79'



O.D.O.T. DISTRICT 2 SURVEY OFFICE

PERSONNEL

REFERENCE NO. 49

SHEET 2 OF 8

NOTES HOMAN

DATE 5-18-05

ROUTE SR 295

H.C. NUHFER

WEATHER SUNNY

COUNTY LUCAS

R.C. HERALD

TEMP. 65°

TOWNSHIP RICHFIELD

SECTION 8

T 9 S R 5 E

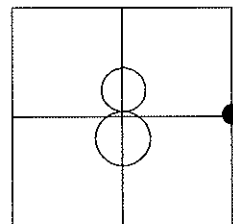
TYPE MONUMENT PK & WASHER

ON SURFACE - ~~BELOW~~ ON

LEFT - ☉ PAV'T - ~~RIGHT~~ 7'

3.3' TO LT EDGE PAVEMENT

S.L.M. 1085+26



FOUND 5-16-05

SET MAG & WASHER
DCH, 7-13-05

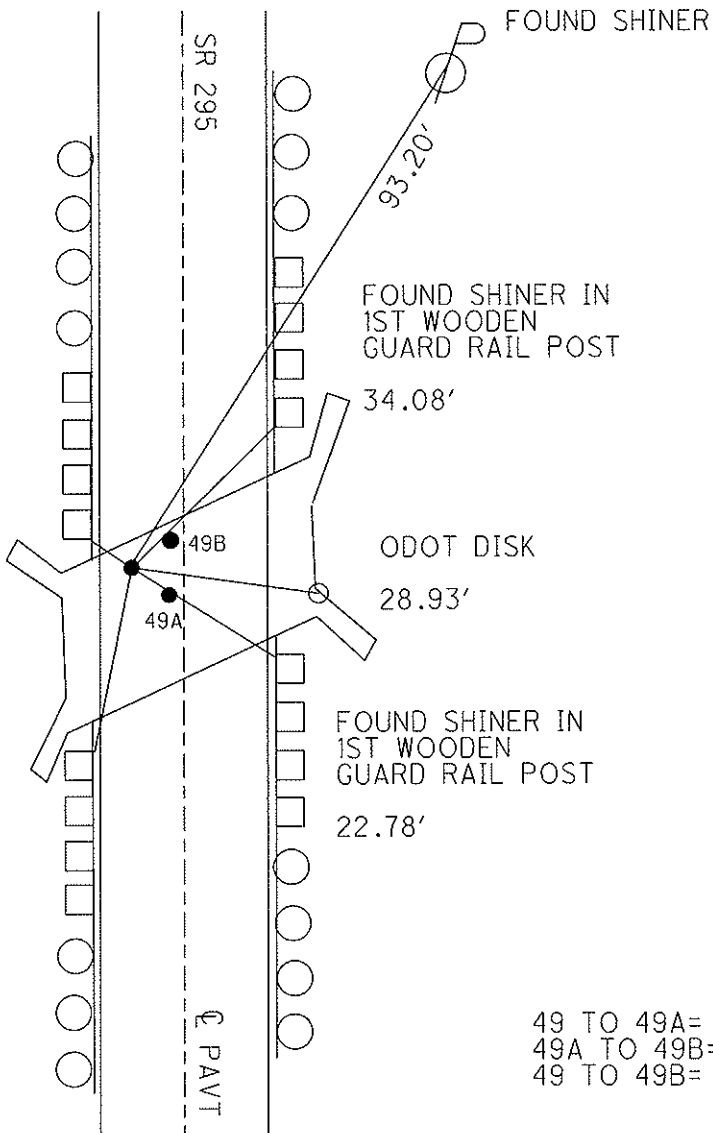
NOTE:
PT 49 BELIEVED TO
BE ☉ R/W

FOUND SHINER IN
1ST WOODEN
GUARD RAIL POST

18.96'

FOUND SHINER IN
1ST WOODEN
GUARD RAIL POST

14.76'



49 TO 49A= 6.65'
49A TO 49B= 1.46'
49 TO 49B= 6.79'

O.D.O.T. DISTRICT 2 SURVEY OFFICE

PERSONNEL

REFERENCE NO. 49

SHEET 5 OF 9

NOTES LOEHRKE / Cordes

H.C. VAN DUSEN

R.C. Cox

DATE 6-24-97

WEATHER Hot!! Humid!!

TEMP +98°

ROUTE S.R. 295

COUNTY LUCAS

TOWNSHIP Richfield

SECTION 8

T9 S R 5 E

Set 3 P.K.'s/WASHER
8-28-97
C.L.

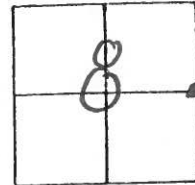
TYPE MONUMENT Fd 3 P.K. NAILS

ON SURFACE - ~~BELOW~~ Yes

LEFT- & PAV'T. - RIGHT

PTA 3.3 TO Lt EDGE PAVEMENT

S.L.M. Pt A @ 1085±26

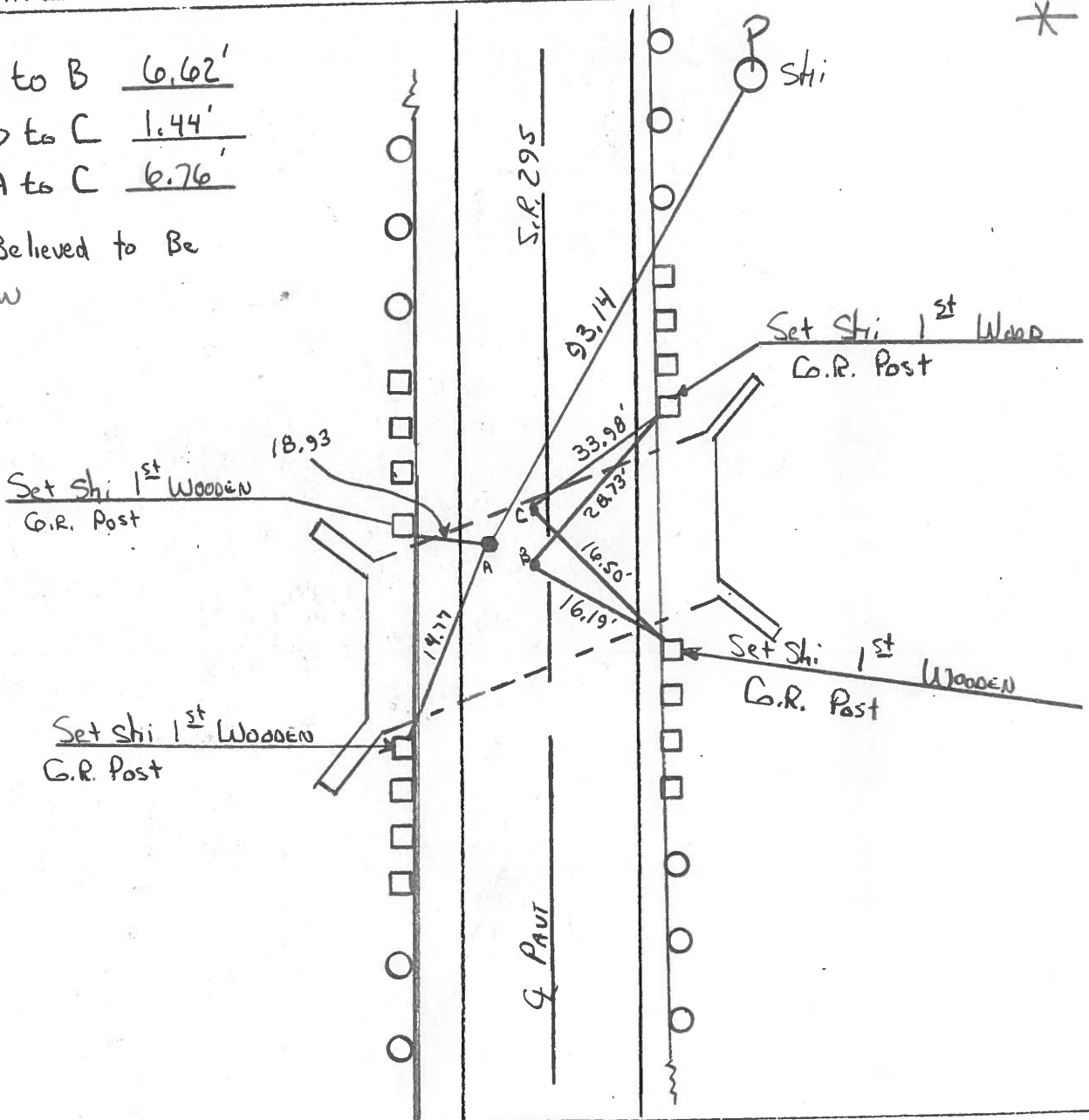


A to B 6.62'

B to C 1.44'

A to C 6.76'

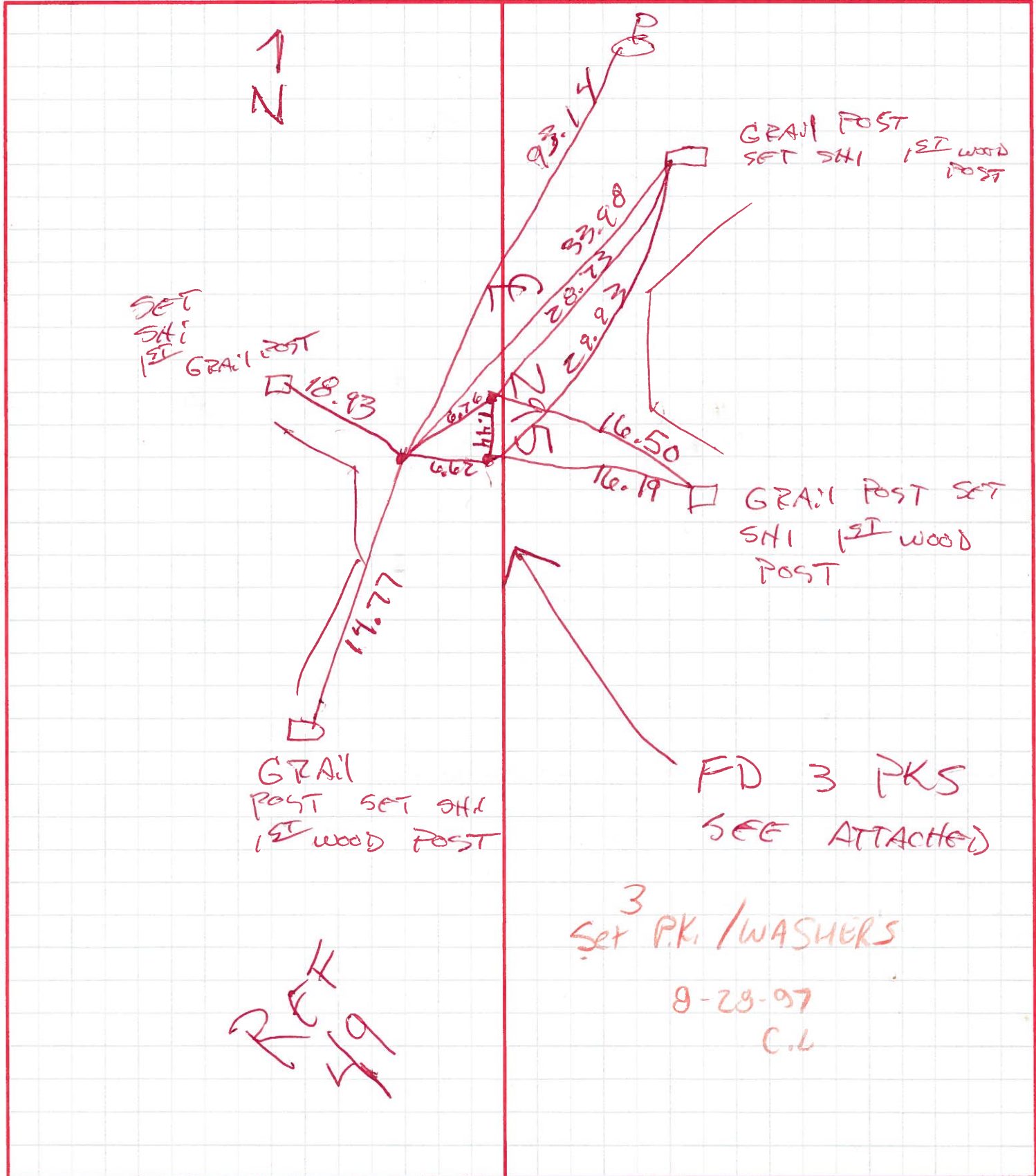
Pt 'A' Believed to Be
& R/W



Notes: New Culvert - see plans/notes For Details

PERSONNEL	TITLE	PERSONNEL	TITLE	COUNTY	DATE
_____	_____	_____	_____	_____	_____
_____	_____	_____	_____	S. R. _____	WEATHER _____
_____	_____	_____	_____	SEC. _____	TEMP. _____

DESCRIPTION _____ JOB NO. _____



Q.D.O.T. DISTRICT 2 SURVEY OFFICE

SHEET 5 OF

County Lucas S.R. 295

Date 29 June 83

Township Richfield

Weather Cloudy

Section 8

Temp. 65°

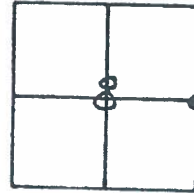
T N, R E

Personnel I. Stone

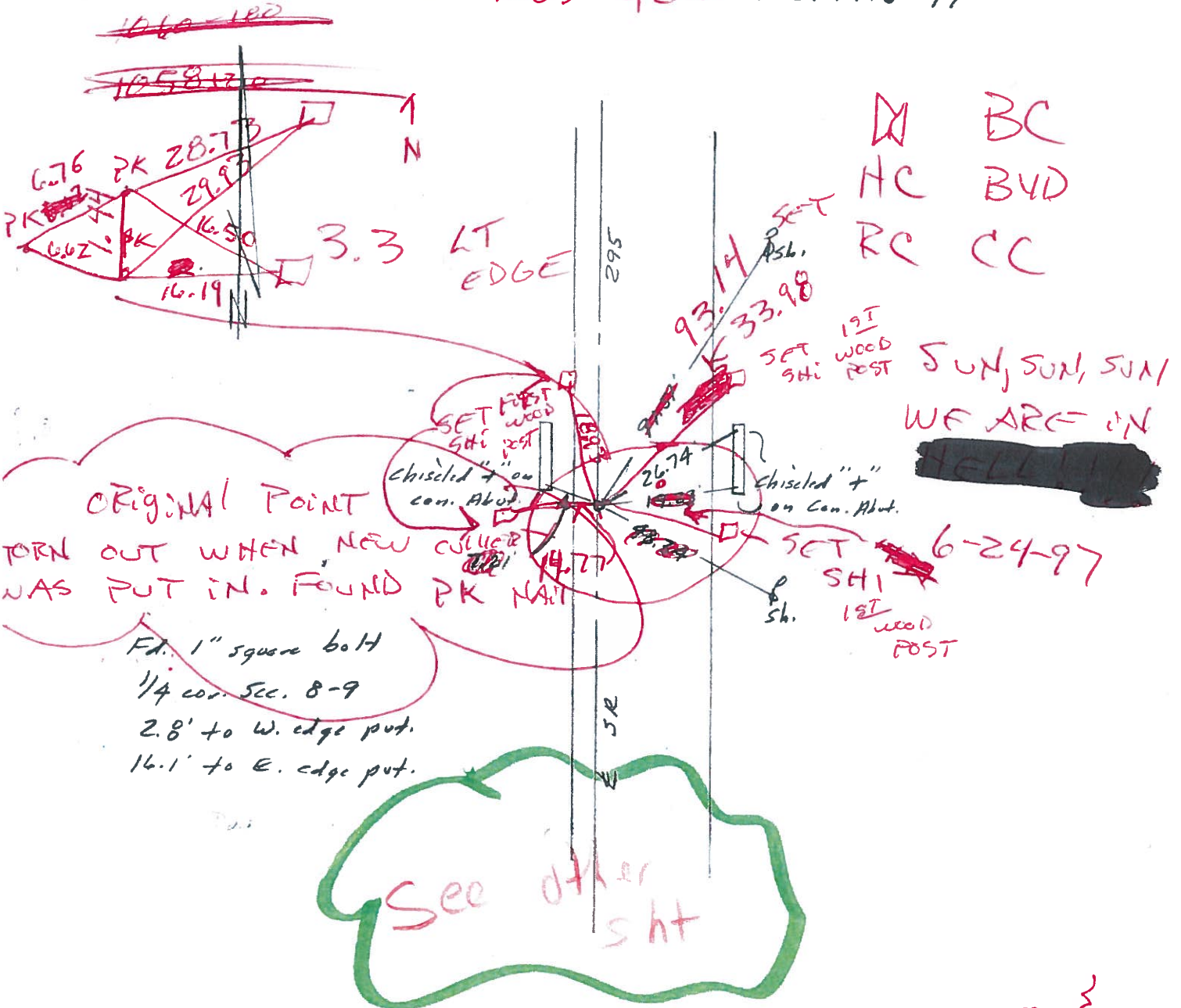
P. Newson

R. Michalak

D. Curtis



S.L.M. Sta. 1023+62 1085 +24 REF. NO. 49



BC
HC BYD
RC CC

SUN, SUN, SUN!
WE ARE ON

ORIGINAL POINT
TORN OUT WHEN NEW COLLAR
WAS PUT IN. FOUND PK NAIL

Ed. 1" square bolt
1/4 con. Sec. 8-9
2.8' to W. edge put.
16.1' to E. edge put.

See other sht

1-22-97

County Lucas S.R. 295

Date 29 June 83

Township Richfield

Weather Cloudy

Section 8

Temp. 65°

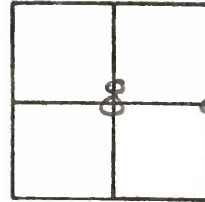
T N, R E

Personnel I. Stone

P. Newson

R. Michalak

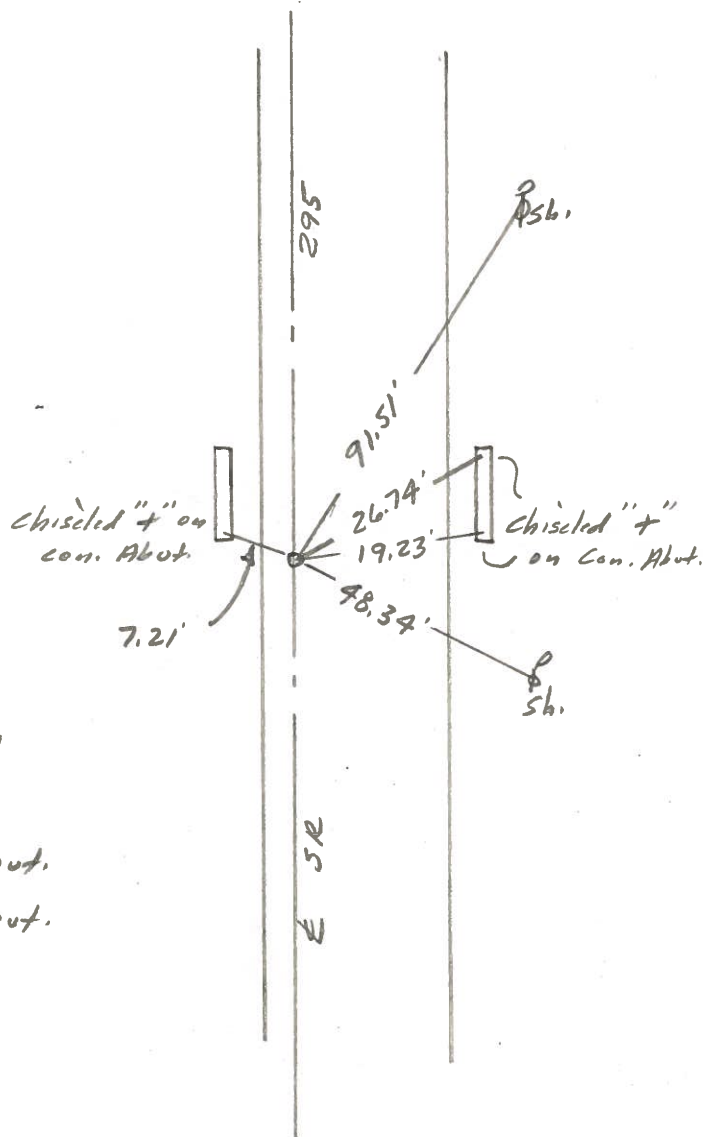
D. Curtis



S.L.M. Sta. 1023+62

REF. NO. 49

16.1
2.8



Fd. 1" square bolt
1/4 con. Sec. 8-9
2.8' to W. edge put.
16.1' to E. edge put.

Dug

PERSONNEL	TITLE	PERSONNEL	TITLE
W. DENNO			
D. CURTIS			
D. STEVENS			
R. BRANNAN			

COUNTY LUCAS

DATE JULY 20, 1971

S. R. #295

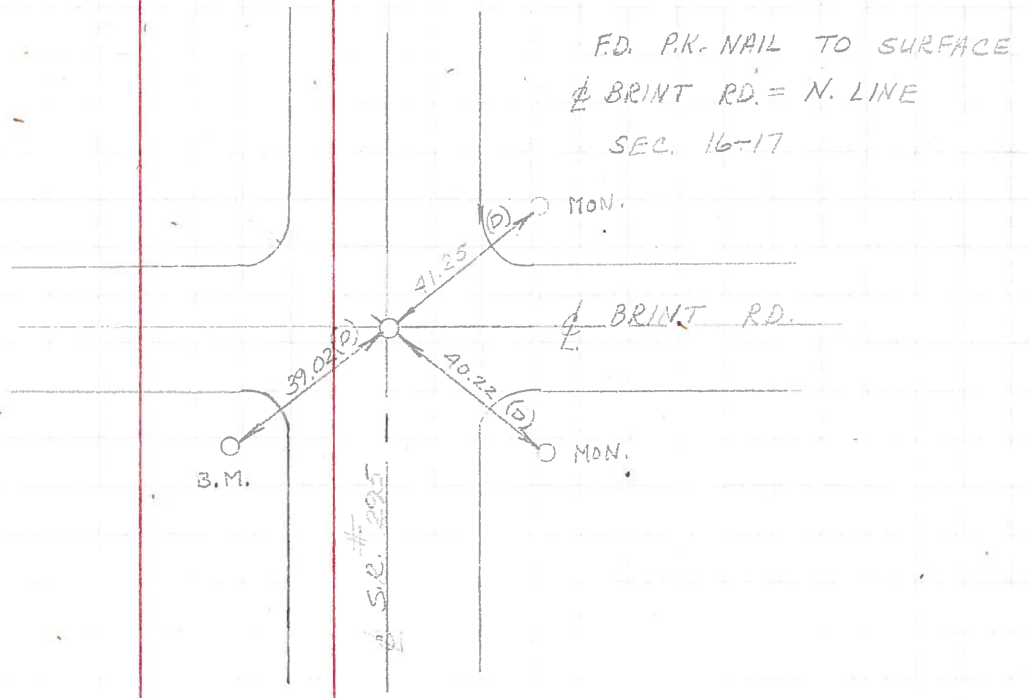
WEATHER FAIR

SEC. _____

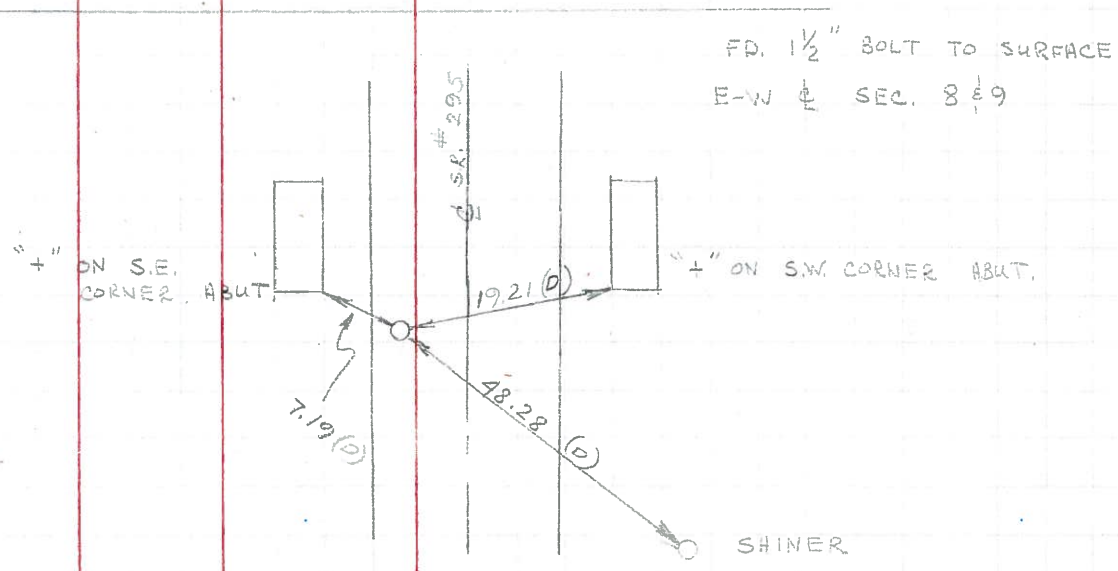
TEMP. 70±

DESCRIPTION REFERENCES TO CONTROL POINTS LEFT CENTER LINE RIGHT JOB NO. _____

48



49



PERSONNEL	TITLE	PERSONNEL	TITLE	COUNTY	DATE
Stone	Notes			Lucas	17 June 68
Beck	Flag			S. R. E 295	WEATHER Fair
Michalek	Tape			SEC.	TEMP. 60°
Schradner	Tape				

DESCRIPTION References to Central Points JOB NO. _____

