

O.D.O.T. DISTRICT 2 SURVEY OFFICE (USE ONLY)

PERSONNEL

REFERENCE NO. 50

SHEET 5 OF 8

NOTES RHOADES

DATE 11/15/23

ROUTE SR 295

H.C. NIESE

WEATHER SUNNY

COUNTY LUCAS

R.C. ASTON

TEMP. 43°

TOWNSHIP RICHFIELD

MILLER

DWG BY RHOADES PID 105618

SECTION 9

T 9 N R 5 E

TYPE MONUMENT MAG/WASHER

ON SURFACE - ~~BELOW~~ ON

OFFSET 2.5' LT : ~~RT~~

- TO - EDGE PAVEMENT

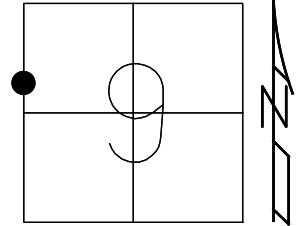
STATION: 1241+63.04

HORIZ.DATUM: NAD83 (2011)

GEOID: NAVD88 2018

GRID: NORTHING: 749244.405

EASTING: 1602730.354

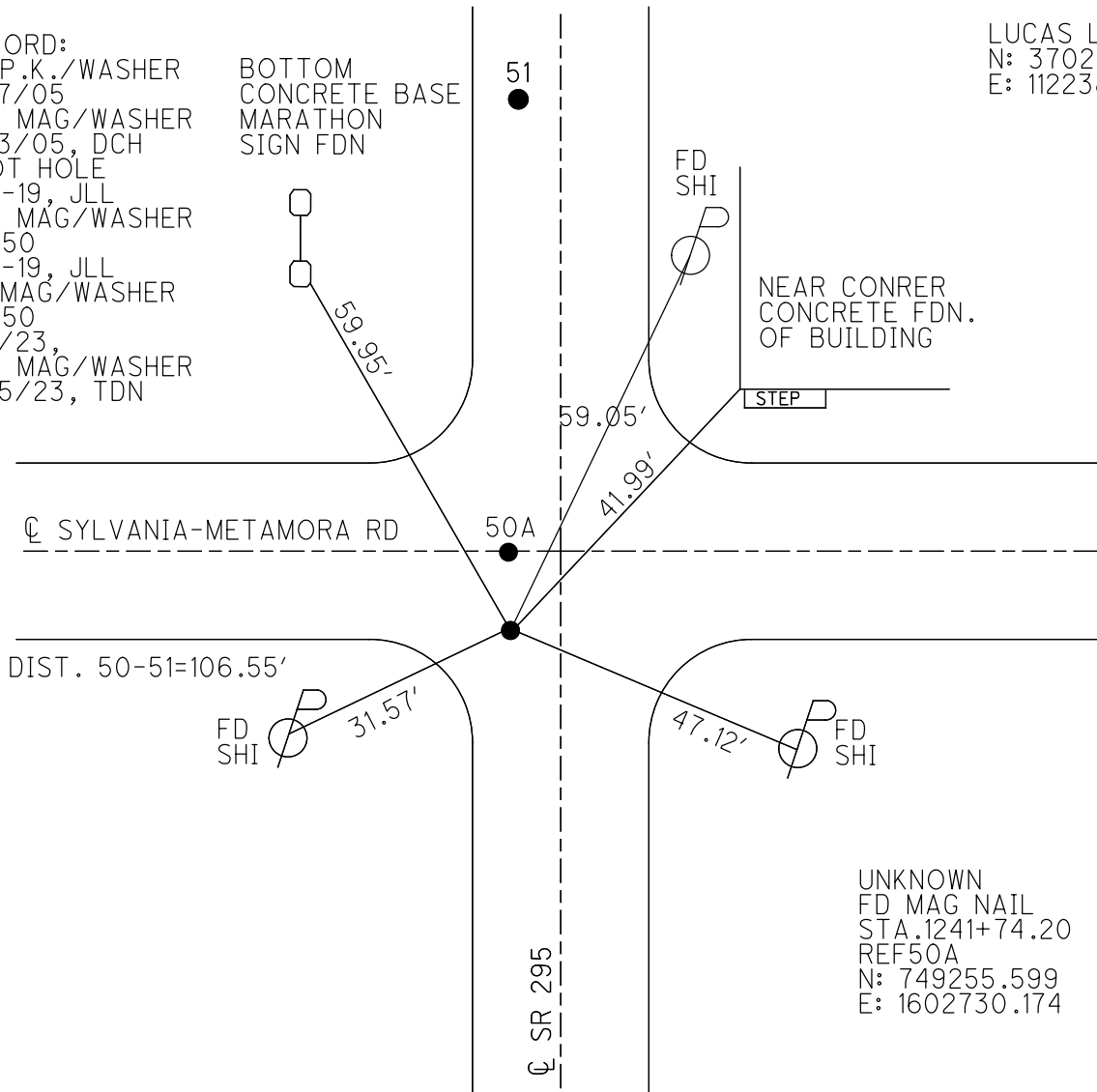


RECORD:
 FD P.K./WASHER
 5/17/05
 SET MAG/WASHER
 7/13/05, DCH
 SHOT HOLE
 3-6-19, JLL
 SET MAG/WASHER
 REF50
 4-9-19, JLL
 FD MAG/WASHER
 REF50
 9/1/23,
 SET MAG/WASHER
 11/15/23, TDN

BOTTOM
 CONCRETE BASE
 MARATHON
 SIGN FDN

51

LUCAS LDP:
 N: 370202.404
 E: 112238.714



NEAR CONRER
 CONCRETE FDN.
 OF BUILDING

STEP

☐ SYLVANIA-METAMORA RD

50A

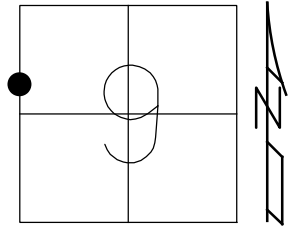
☐ SR 295

UNKNOWN
 FD MAG NAIL
 STA. 1241+74.20
 REF50A
 N: 749255.599
 E: 1602730.174

O.D.O.T. DISTRICT 2 SURVEY OFFICE (USE ONLY)

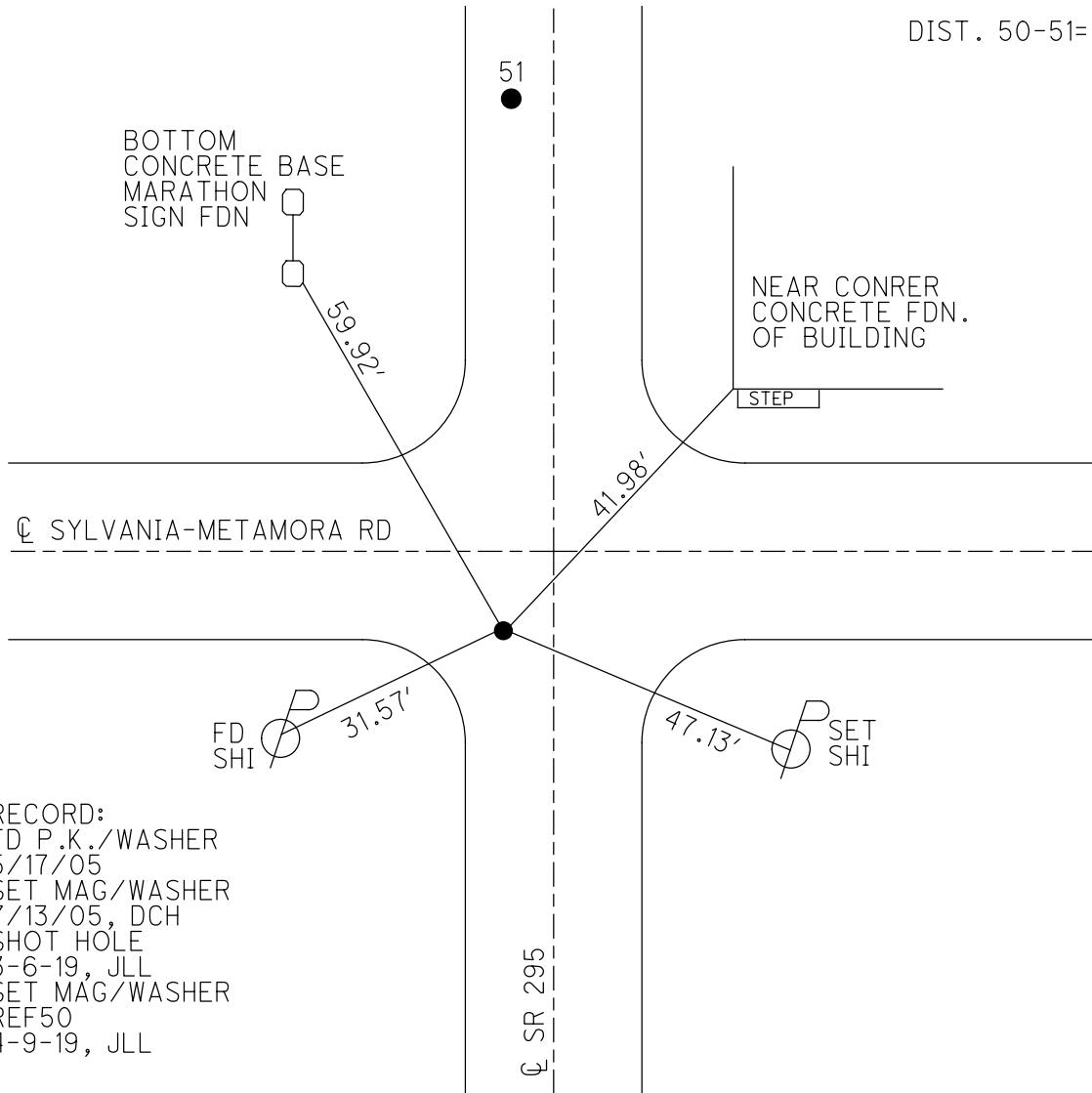
PERSONNEL _____ REFERENCE NO. 50 SHEET 5 OF 8
 NOTES JAMES DATE 4-9-19 ROUTE SR 295
 H.C. LEU WEATHER SUNNY COUNTY LUCAS
 R.C. JAMES TEMP. 55°F TOWNSHIP RICHFIELD
 DWG BY MAHLER PID 107059 SECTION 9
 T 9 N R 5 E

TYPE MONUMENT MAG/WASHER
 ON SURFACE - ~~BELOW~~ ON
 OFFSET C PAVEMENT 2.5' LT : ~~RT~~
- TO - EDGE PAVEMENT
 STATION: 1111+00.43



HORIZ.DATUM: NAD83 (2011) GEOID: NAVD88-2012A
 GRID: NORTHING: 749244.437 EASTING: 1602730.376

DIST. 50-51=106.59'



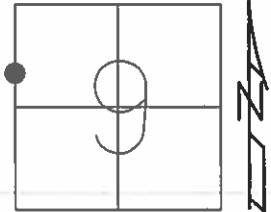
RECORD:
 FD P.K./WASHER
 5/17/05
 SET MAG/WASHER
 7/13/05, DCH
 SHOT HOLE
 3-6-19, JLL
 SET MAG/WASHER
 REF50
 4-9-19, JLL

C SR 295

O.D.O.T. DISTRICT 2 SURVEY OFFICE (USE ONLY)

PERSONNEL _____ REFERENCE NO. 50 SHEET 5 OF 8
 NOTES HOMAN DATE 5/18/05 ROUTE SR 295
 H.C. HERALD WEATHER SUNNY COUNTY LUCAS
 R.C. MIKLOVIC TEMP. 65° TOWNSHIP RICHFIELD
 _____ SECTION 9
 _____ T 9 N R 5 E

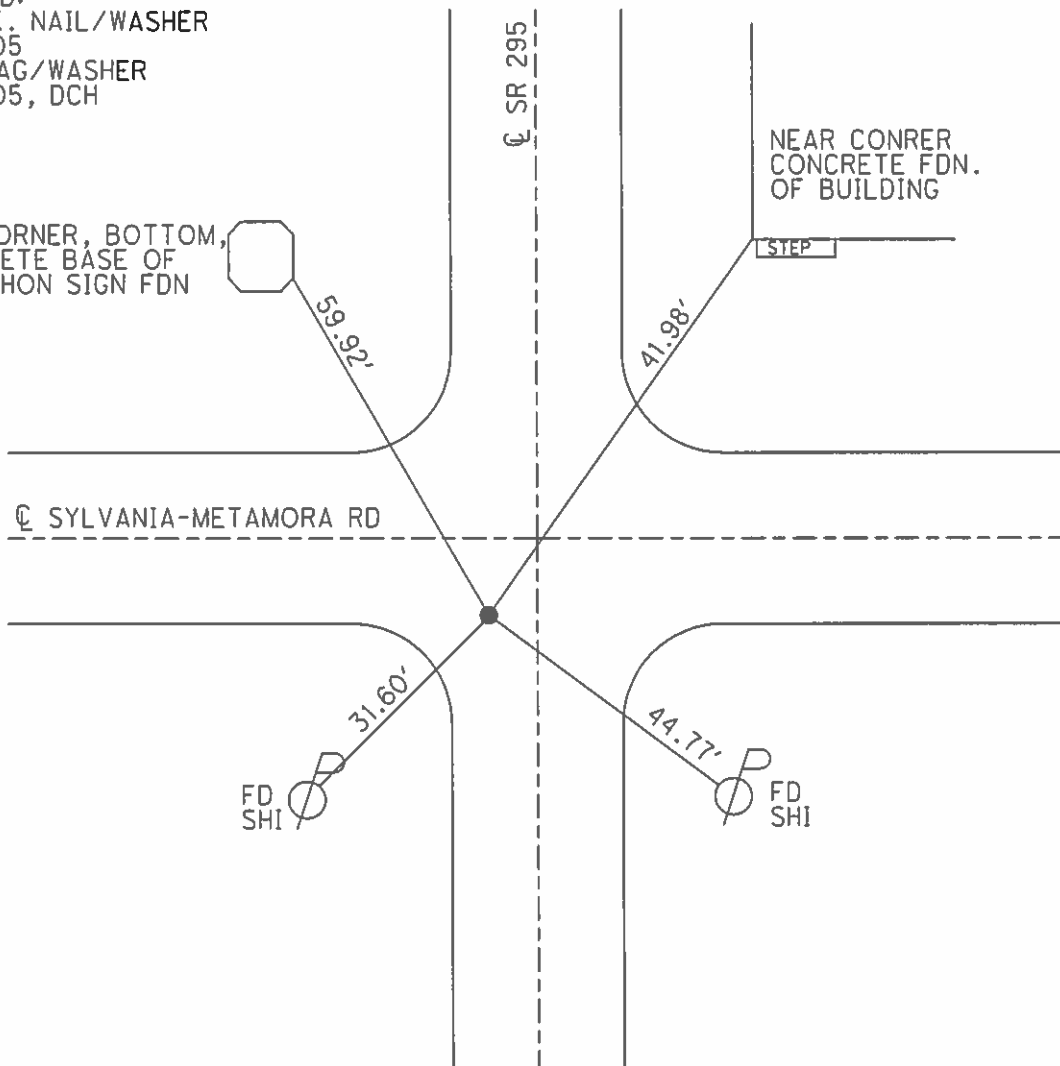
TYPE MONUMENT MAG/WASHER
~~ON SURFACE~~ - BELOW 2'
 LEFT - ☑ PAV'T - ~~RIGHT~~ 2.5'
 - TO - EDGE PAVEMENT
 S.L.M. 1111+22



Grid: Northing: _____ Easting: _____

RECORD:
 FD P.K. NAIL/WASHER
 5/17/05
 SET MAG/WASHER
 7/13/05, DCH

S/E CORNER, BOTTOM,
 CONCRETE BASE OF
 MARATHON SIGN FDN



O.D.O.T. DISTRICT 2 SURVEY OFFICE

PERSONNEL

REFERENCE NO. 50

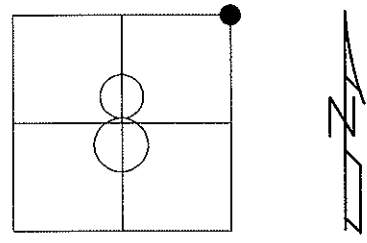
SHEET 5 OF 8

NOTES HOMAN
 H.C. HERALD
 R.C. MIKLOVIC

DATE 5-18-05
 WEATHER SUNNY
 TEMP. 65°

ROUTE SR 295
 COUNTY LUCAS
 TOWNSHIP RICHFIELD
 SECTION 8
 T 9 S R 5 E

TYPE MONUMENT PK & WASHER
~~ON SURFACE~~ - BELOW 2"
 LEFT - ☉ PAV'T - RIGHT 2.5'
TO EDGE PAVEMENT 10' SOUTH
S.L.M. 1111+22 ☉ SYLVANIA

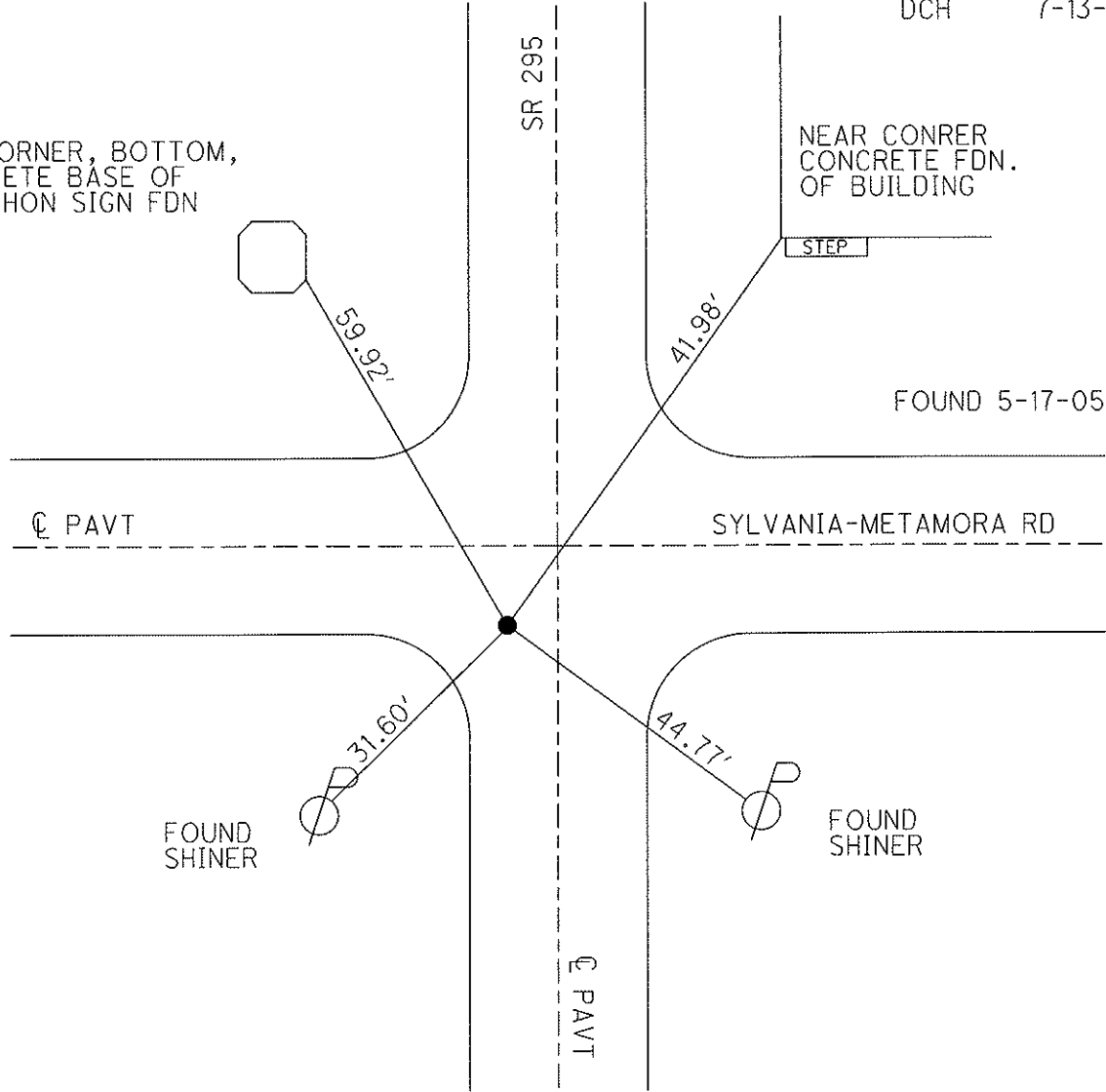


SET MAG & WASHER
 DCH 7-13-05

S/E CORNER, BOTTOM,
 CONCRETE BASE OF
 MARATHON SIGN FDN

NEAR CONRER
 CONCRETE FDN.
 OF BUILDING

FOUND 5-17-05



FOUND SHINER

FOUND SHINER

O.D.O.T. DISTRICT 2 SURVEY OFFICE

PERSONNEL

REFERENCE NO. 50

SHEET 7 OF 10

NOTES HOMAN

DATE 5-18-05

ROUTE SR 295

H.C. HERALD

WEATHER SUNNY

COUNTY LUCAS

R.C. MIKLOVIC

TEMP. 65°

TOWNSHIP RICHFIELD

SECTION 8

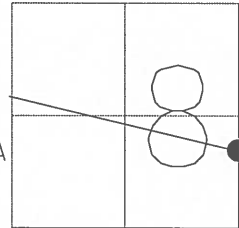
T 9 S R 5 E

TYPE MONUMENT PK & WASHER

~~ON SURFACE~~ - ~~BELOW~~ 2" BELOW

LEFT - ☉ PAVT - ~~RIGHT~~ 2.5' LT

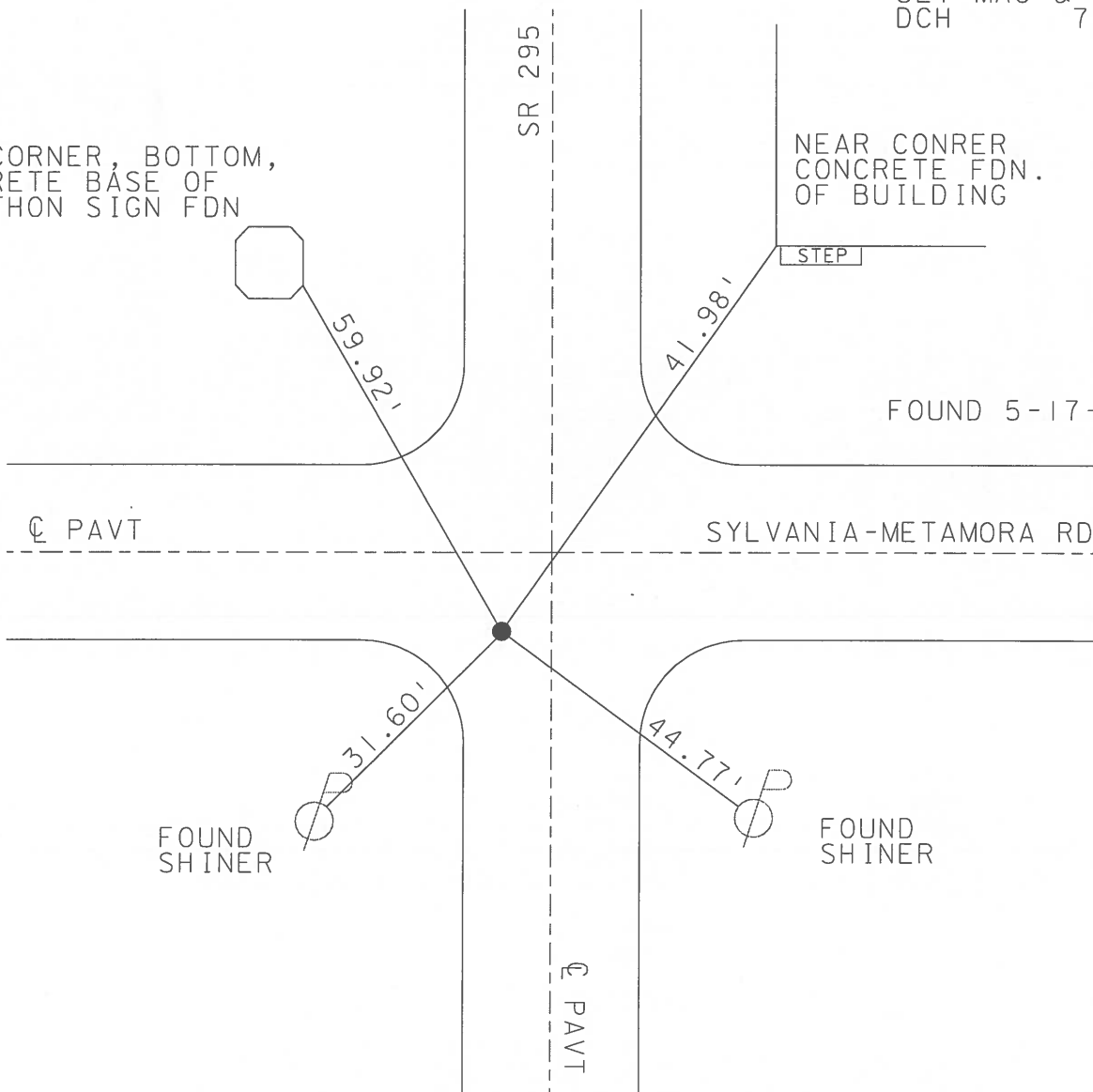
TO EDGE PAVEMENT 10' SOUTH
S.L.M. 1111+22 ☉ SYLVANIA



SET MAG & WASHER
DCH 7-13-05

S/E CORNER, BOTTOM,
CONCRETE BASE OF
MARATHON SIGN FDN

NEAR CONRER
CONCRETE FDN.
OF BUILDING



O.D.O.T. DISTRICT 2 SURVEY OFFICE

PERSONNEL

REFERENCE NO. 50

SHEET 6 OF 9

NOTES LOHRKE/CORDES

H.C. VAND DUSEN

R.C. COX

Weaver

DATE 6-25-97

WEATHER SUNNY

TEMP. +85°

Set P.K./WASHER
8-28-97
C.L.

ROUTE S.R. 295

COUNTY LUCAS

TOWNSHIP Richfield

SECTION 8

T9 S R 5 E

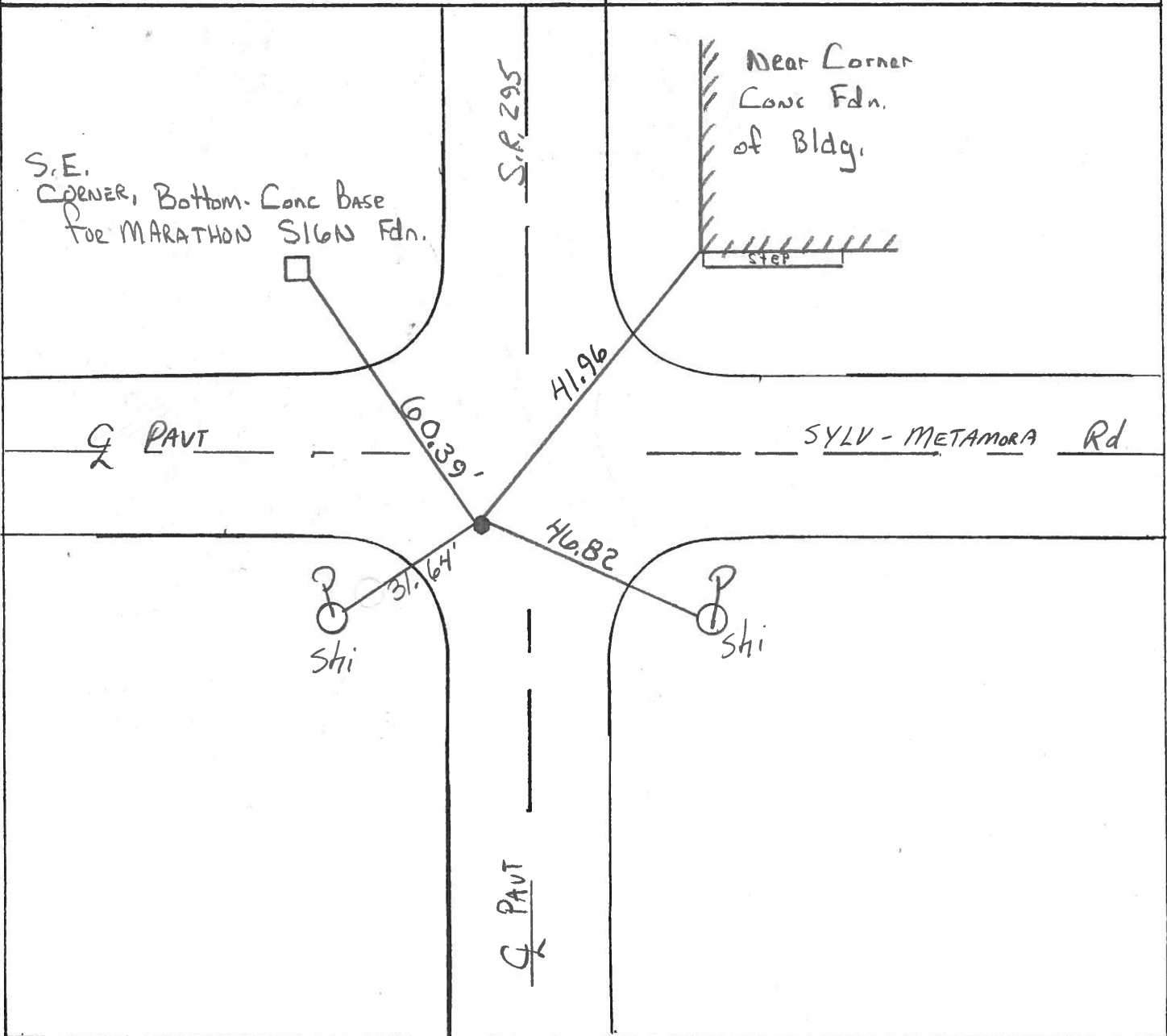
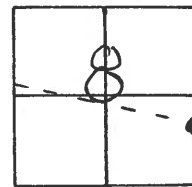
TYPE MONUMENT SQUARE Bolt

~~ON~~ SURFACE - BELOW 2" Deep

LEFT - & PAV'T. - ~~RIGHT~~ 4.1' LT

TO EDGE PAVEMENT

S.L.M. 1111+22



Q.D.O.T. DISTRICT 2 SURVEY OFFICE

SHEET 6 OF

County Lucas S.R. 295

Date 29 June 83

Township Richfield

Weather Cloudy

Section 8

Temp. 65°

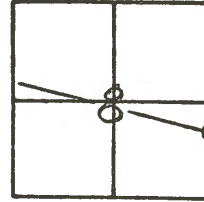
T_N, R_E

Personnel I. Stone

P. Neuse

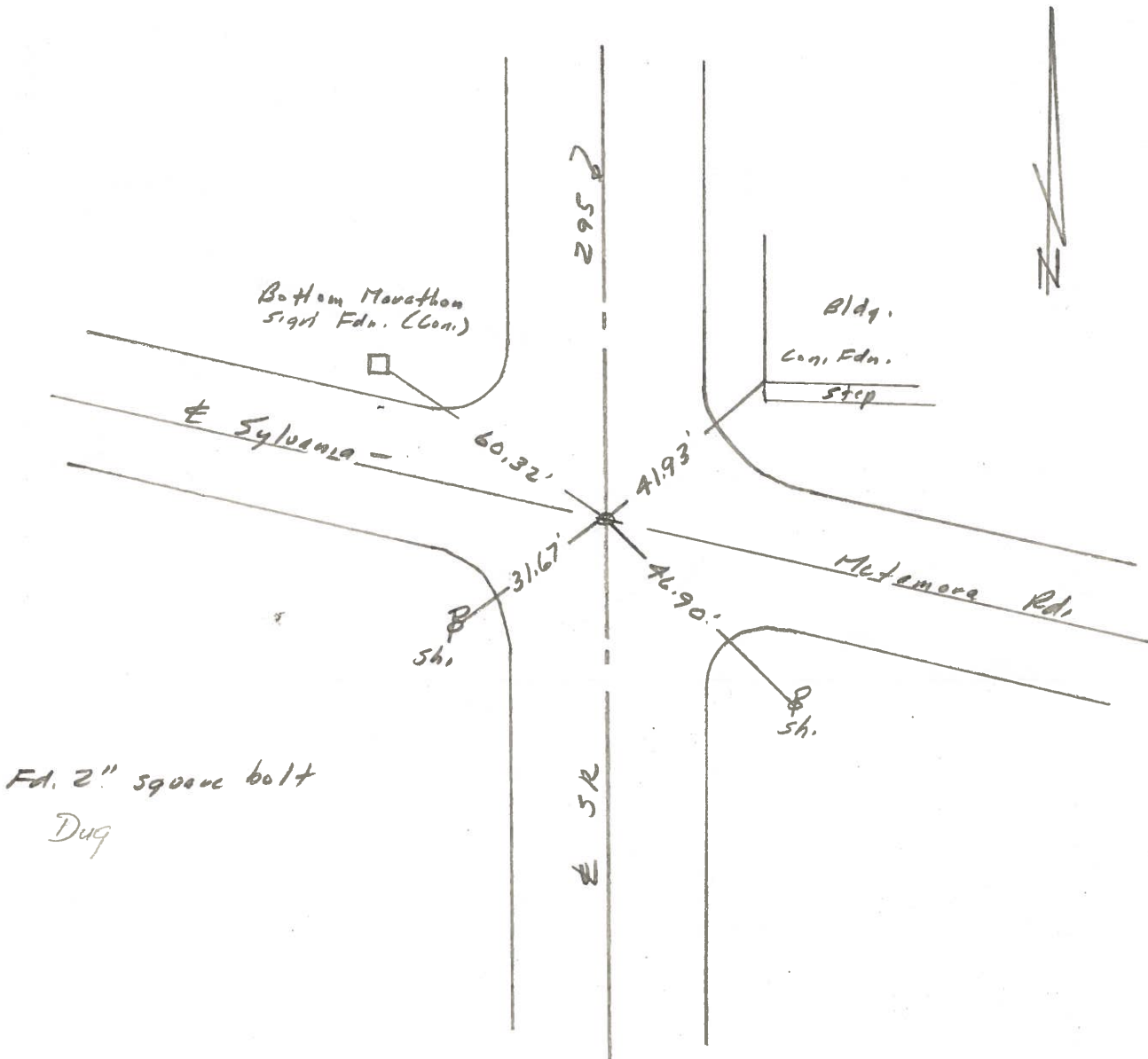
R. Michalak

D. Curtis



S.L.M. Sta. 1049+55

REF. NO. 50



PERSONNEL TITLE PERSONNEL TITLE

COUNTY LUCAS

DATE 20 JULY 1971

W. DENNO

S. R. # 295

WEATHER FAIR

D. CURTIS

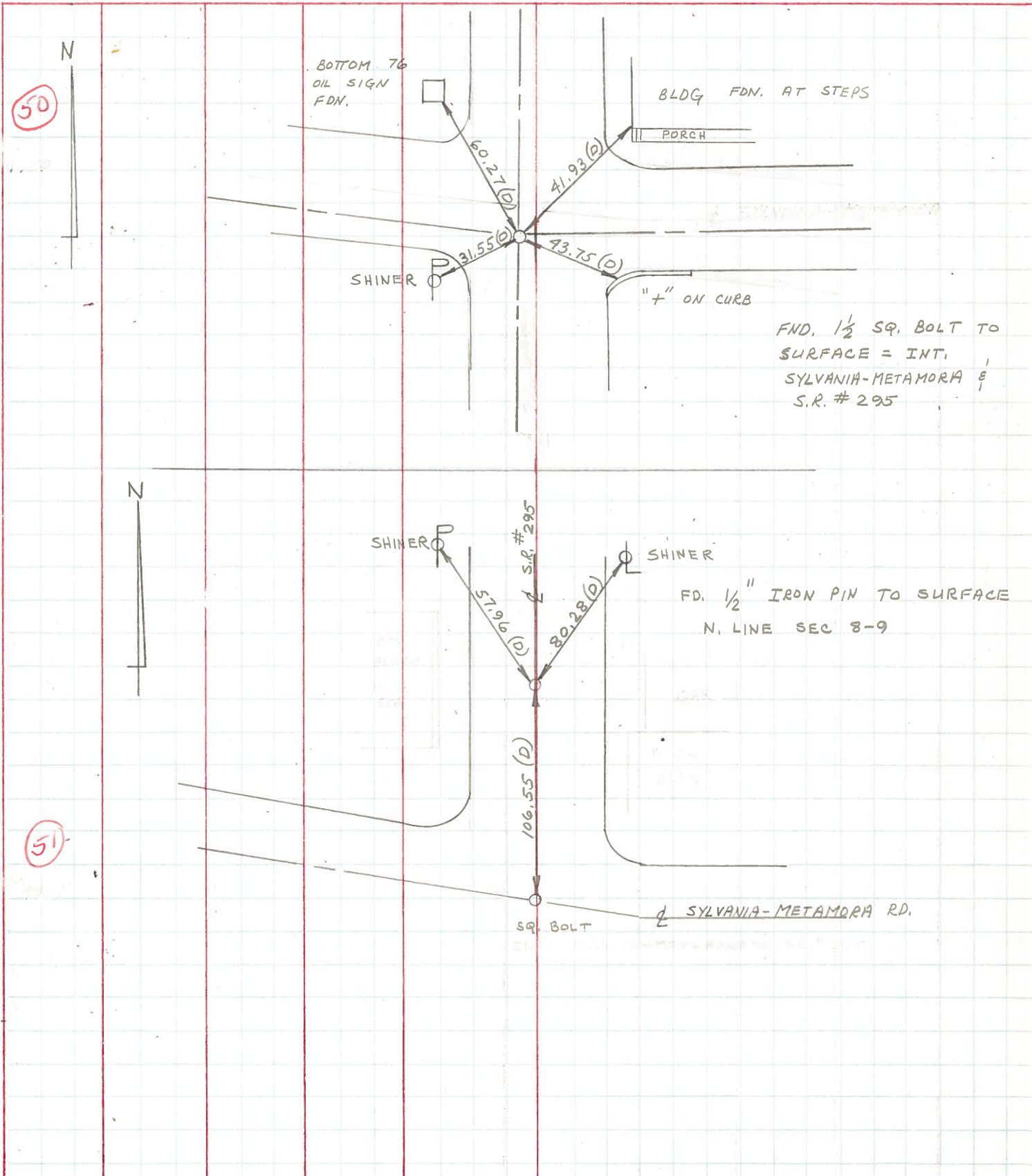
D. STEVENS

SEC. _____

TEMP. 70±

R. BRANNAN

DESCRIPTION REFERENCES TO CONTROL POINTS LEFT CENTER LINE RIGHT JOB NO.



PERSONNEL	TITLE	PERSONNEL	TITLE	COUNTY	DATE
Stone	Notes			Lucas	17 June 68
Beck	Flag			S. R. #295	WEATHER Fair
Michalak	Tape			SEC.	TEMP. 62°
Schroder	Tape				

DESCRIPTION References to Control Points JOB NO. _____

