

O.D.O.T. DISTRICT 2 SURVEY OFFICE (USE ONLY)

PERSONNEL

REFERENCE NO. 51

SHEET 6 OF 8

NOTES RHOADES

DATE 11/15/23

ROUTE SR 295

H.C. NIESE

WEATHER SUNNY

COUNTY LUCAS

R.C. ASTON

TEMP. 43°

TOWNSHIP RICHFIELD

MILLER

DWG BY RHOADES

PID 105618

SECTION 9

T 9 N R 5 E

TYPE MONUMENT MAG/WASHER

ON SURFACE - ~~BELOW~~ ON

OFFSET Q PAVEMENT 2.5' LT : RT

7.3' TO LT EDGE PAVEMENT

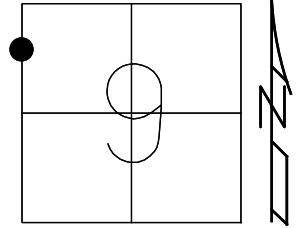
STATION: 1242+69.63

HORZ.DATUM: NAD83 (2011)

GEOID: NAVD88 2018

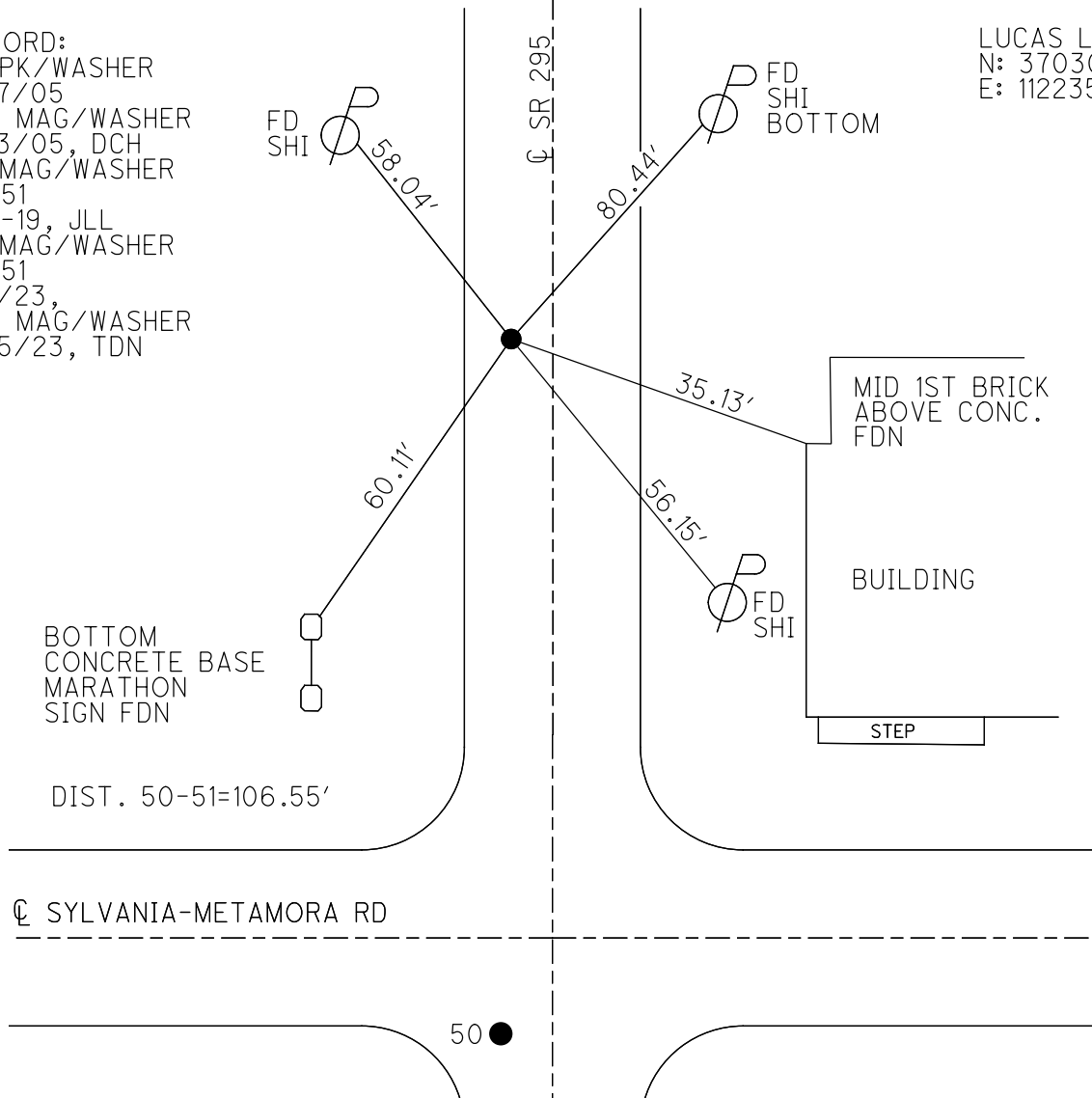
GRID: NORTHING: 749350.908

EASTING: 1602728.965



RECORD:
 FD PK/WASHER
 5/17/05
 SET MAG/WASHER
 7/13/05, DCH
 FD MAG/WASHER
 REF51
 3-6-19, JLL
 FD MAG/WASHER
 REF51
 9/1/23,
 SET MAG/WASHER
 11/15/23, TDN

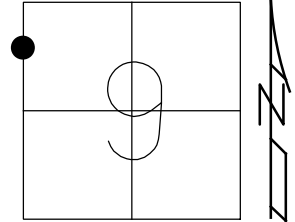
LUCAS LDP:
 N: 370308.882
 E: 112235.923



O.D.O.T. DISTRICT 2 SURVEY OFFICE (USE ONLY)

PERSONNEL _____ REFERENCE NO. 51 SHEET 6 OF 8
 NOTES AUBLE DATE 5-7-20 ROUTE SR 295
 H.C. LEU WEATHER BREEZY SUNNY COUNTY LUCAS
 R.C. BALBAUGH TEMP. 55°F TOWNSHIP RICHFIELD
 DWG BY MAHLER PID 107059 SECTION 9
 T 9 N R 5 E

TYPE MONUMENT MAG/WASHER
 ON SURFACE - ~~BELOW~~ ON
 OFFSET Q PAVEMENT 2.5' LT : RT
7.3' TO LT EDGE PAVEMENT
 STATION: 1112+06.98

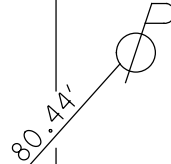


HORZ.DATUM: NAD83 (2011) GEOID: NAVD88-2012A
 GRID: NORTHING: 749350.982 EASTING: 1602729.019

RECORD:
 FD PK/WASHER
 5/17/05
 SET MAG/WASHER
 7/13/05, DCH
 FD MAG/WASHER
 REF51
 3-6-19, JLL



Q SR 295



FD
 SHI
 BOTTOM

DIST. 50-51=106.59'

60.04'

56.16'

31.69'

BOTTOM
 CONCRETE BASE
 MARATHON
 SIGN FDN

OUTSIDE CORNER
 CONCRETE RAMP

BUILDING

STEP

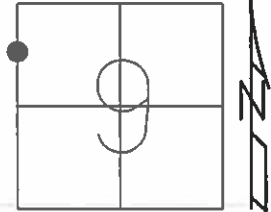
Q SYLVANIA-METAMORA RD

50 ●

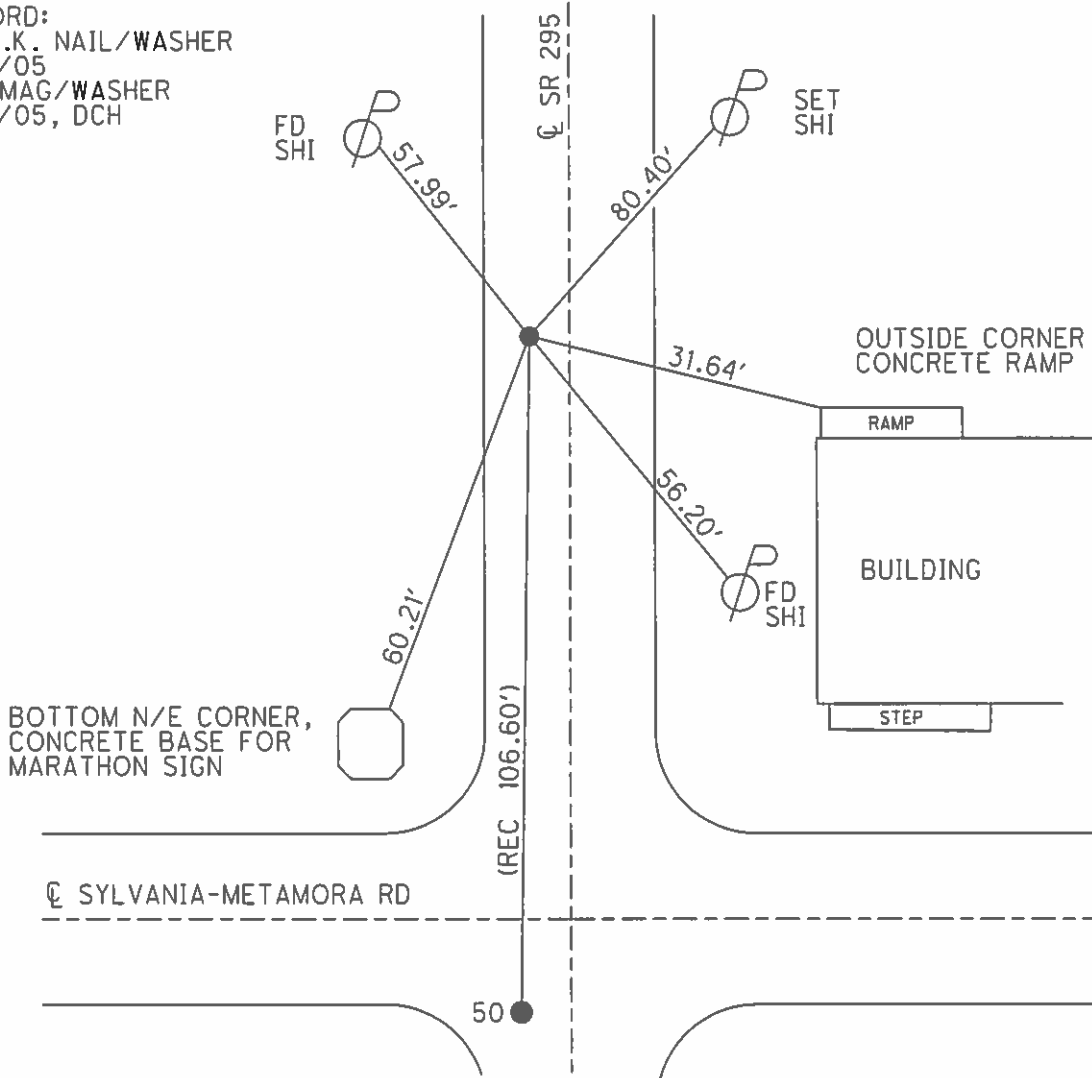
O.D.O.T. DISTRICT 2 SURVEY OFFICE (USE ONLY)

PERSONNEL	REFERENCE NO.	<u>51</u>	SHEET	<u>6</u>	OF	<u>8</u>
NOTES	<u>HOMAN</u>	DATE	<u>5/18/05</u>	ROUTE	<u>SR 295</u>	
H.C.	<u>HERALD</u>	WEATHER	<u>SUNNY</u>	COUNTY	<u>LUCAS</u>	
R.C.	<u>MIKLOVIC</u>	TEMP.	<u>65°</u>	TOWNSHIP	<u>RICHFIELD</u>	
				SECTION	<u>9</u>	
				T	<u>9</u>	R
					<u>N</u>	<u>5</u>
					<u>E</u>	

TYPE MONUMENT MAG/WASHER
 ON SURFACE - ~~BELOW~~ ON
 LEFT - ☉ PAV'T - ~~RIGHT~~ 2.5'
7.3' TO LT EDGE PAVEMENT
 S.L.M. 1112+32
 Grid: Northing: - Easting: -



RECORD:
 FD P.K. NAIL/WASHER
 5/17/05
 SET MAG/WASHER
 7/13/05, DCH



O.D.O.T. DISTRICT 2 SURVEY OFFICE

PERSONNEL

REFERENCE NO. 51

SHEET 6 OF 8

NOTES HOMAN

DATE 5-18-05

ROUTE SR 295

H.C. HERALD

WEATHER SUNNY

COUNTY LUCAS

R.C. MIKLOVIC

TEMP. 65°

TOWNSHIP RICHFIELD

SECTION 4,5,8,9

T 9 S R 5 E

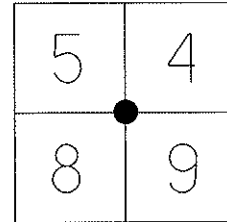
TYPE MONUMENT PK & WASHER

ON SURFACE - ~~BELOW~~ ON

LEFT - ☉ PAV'T - ~~RIGHT~~ 2.5'

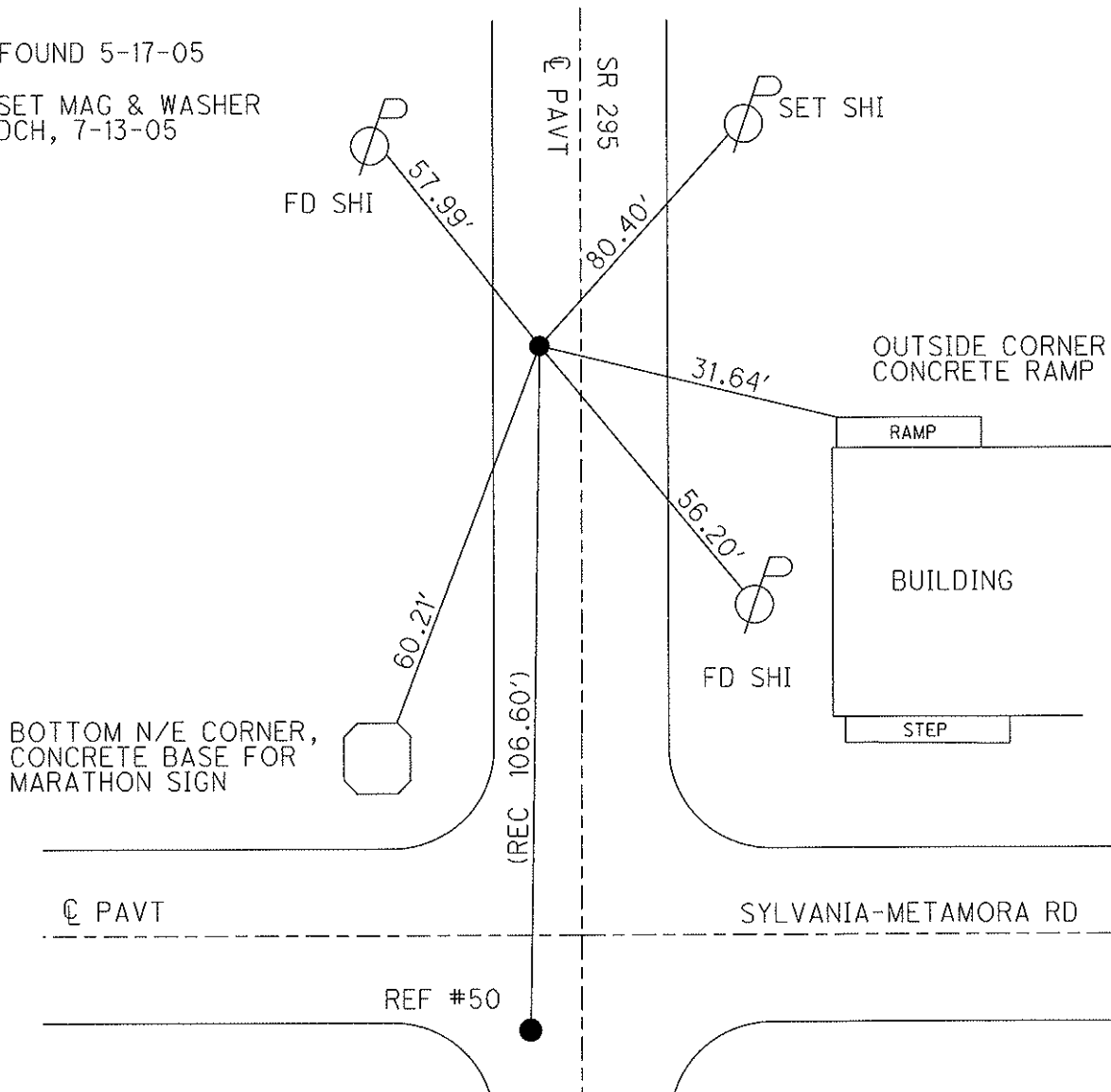
7.3' TO LT EDGE PAVEMENT

S.L.M. 1112+32



FOUND 5-17-05

SET MAG & WASHER
DCH, 7-13-05



O.D.O.T. DISTRICT 2 SURVEY OFFICE

PERSONNEL

REFERENCE NO. 51

SHEET 8 OF 10

NOTES HOMAN

DATE 5-18-05

ROUTE SR 295

H.C. HERALD

WEATHER SUNNY

COUNTY LUCAS

R.C. MIKLOVIC

TEMP. 65°

TOWNSHIP RICHFIELD

SECTION 4-5-8-9

T 9 S R 5 E

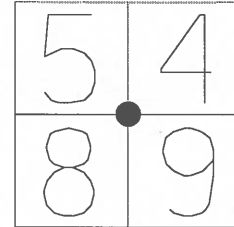
TYPE MONUMENT PK & WASHER

ON SURFACE ~~-BELOW-~~ YES

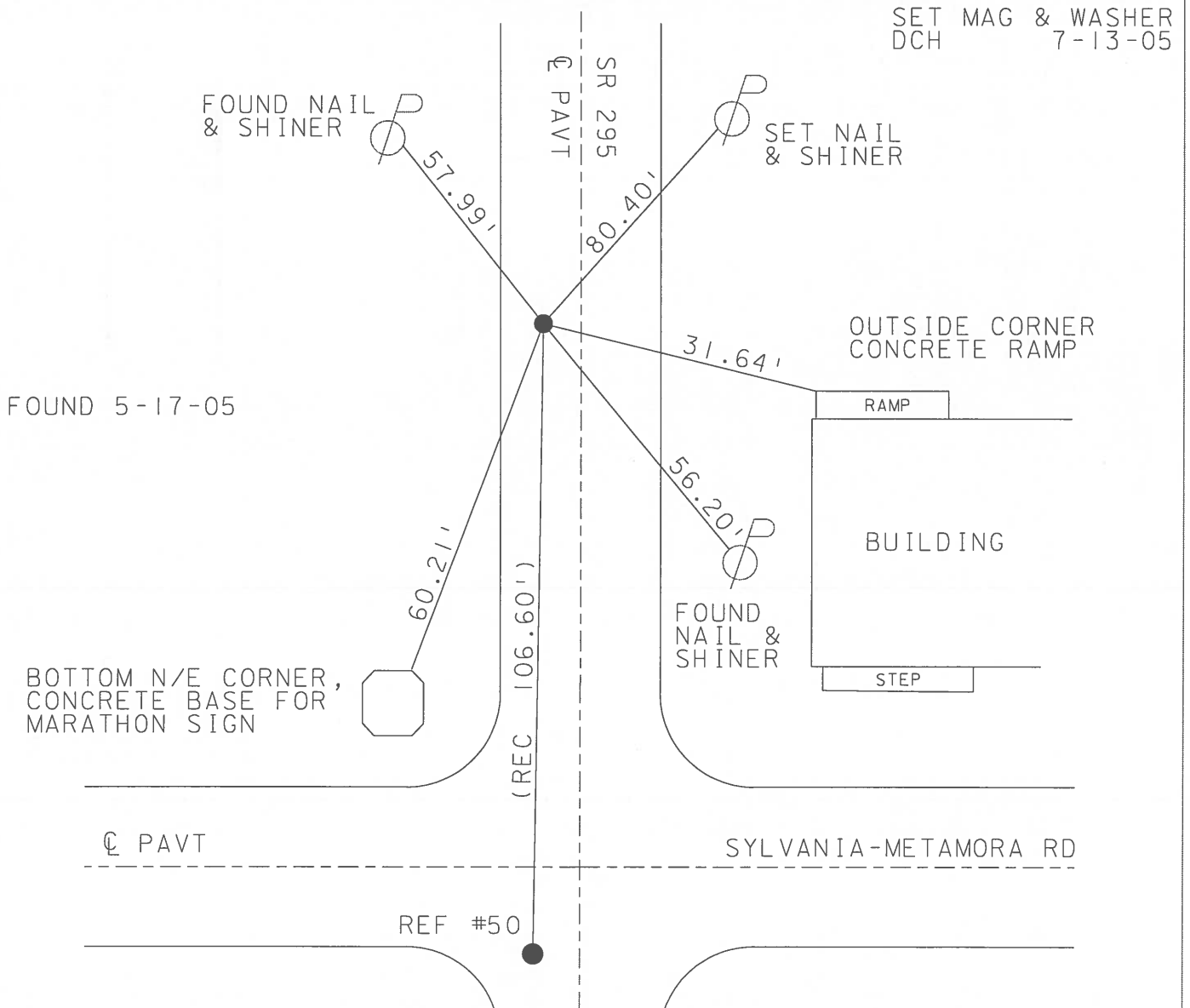
LEFT - Q PAV'T - ~~RIGHT~~ 2.5' LT

7.3' TO LT EDGE PAVEMENT

S.L.M. 1112+32



SET MAG & WASHER
DCH 7-13-05



O.D.O.T. DISTRICT 2 SURVEY OFFICE

PERSONNEL

REFERENCE NO. 51

SHEET 7 OF 9

NOTES Loehrke / Weaver

H.C. Cordes

DATE 6-25-97

ROUTE S.R. 295

R.C. Cox

WEATHER SUNNY

COUNTY LUCAS

TEMP. +85°

TOWNSHIP Richfield

SECTION 5-4-8-9

Set P.K./WASHER
8-28-97
C.L.

T 9 S R 5 E

TYPE MONUMENT P.K. Shank

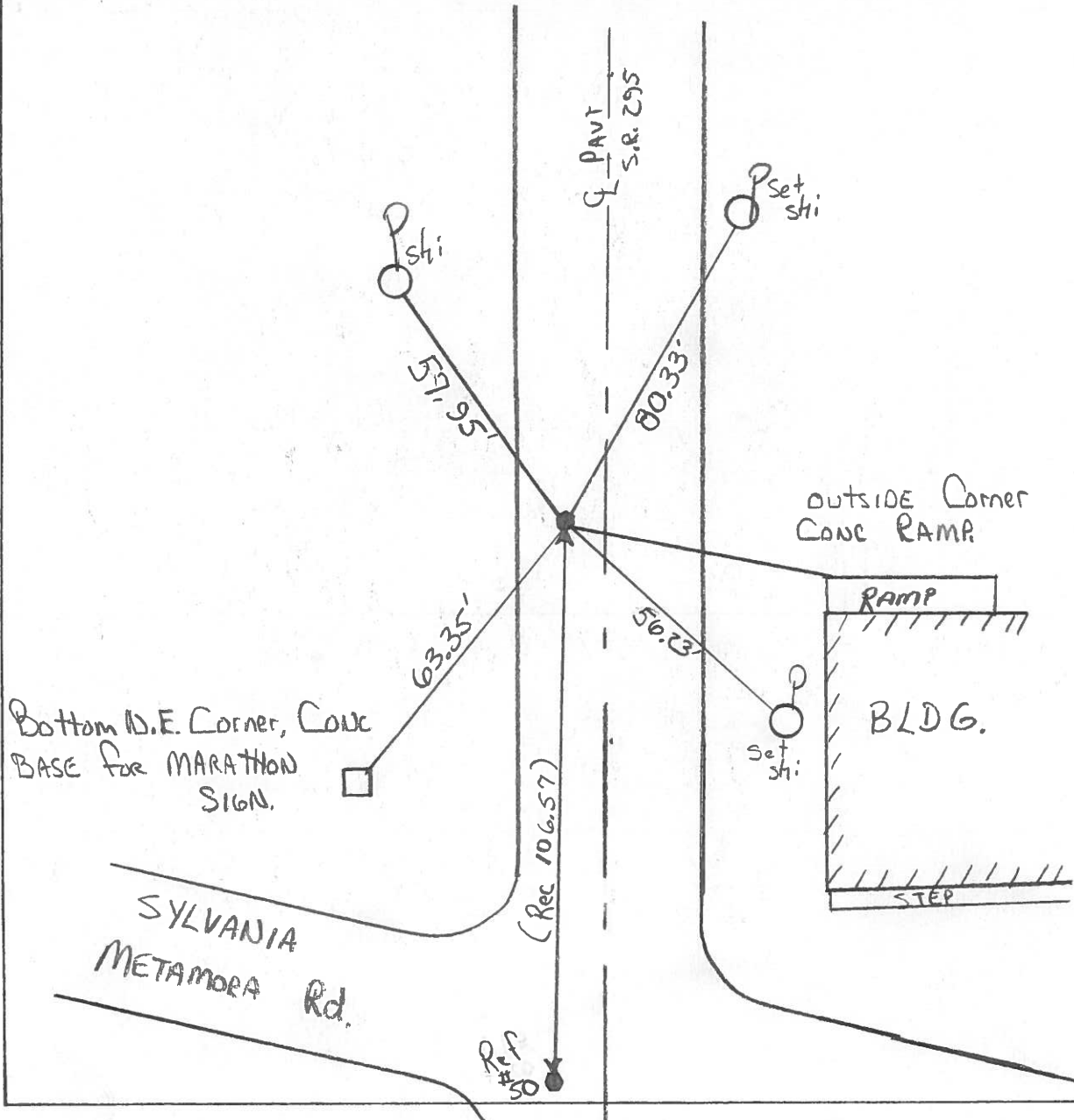
~~ON~~ SURFACE - BELOW 1"

LEFT - C PAV'T. - RIGHT 4.1

6.9' TO Lt EDGE PAVEMENT

S.L.M. 1112+32

5	4
8	9



County Lucas S.R. 295

Date 29 June 83

Township Richfield

Weather Cloudy

Section 4-5-8-9

Temp. 65°

T N, R E

Personnel I. Stone

5	4
8	9



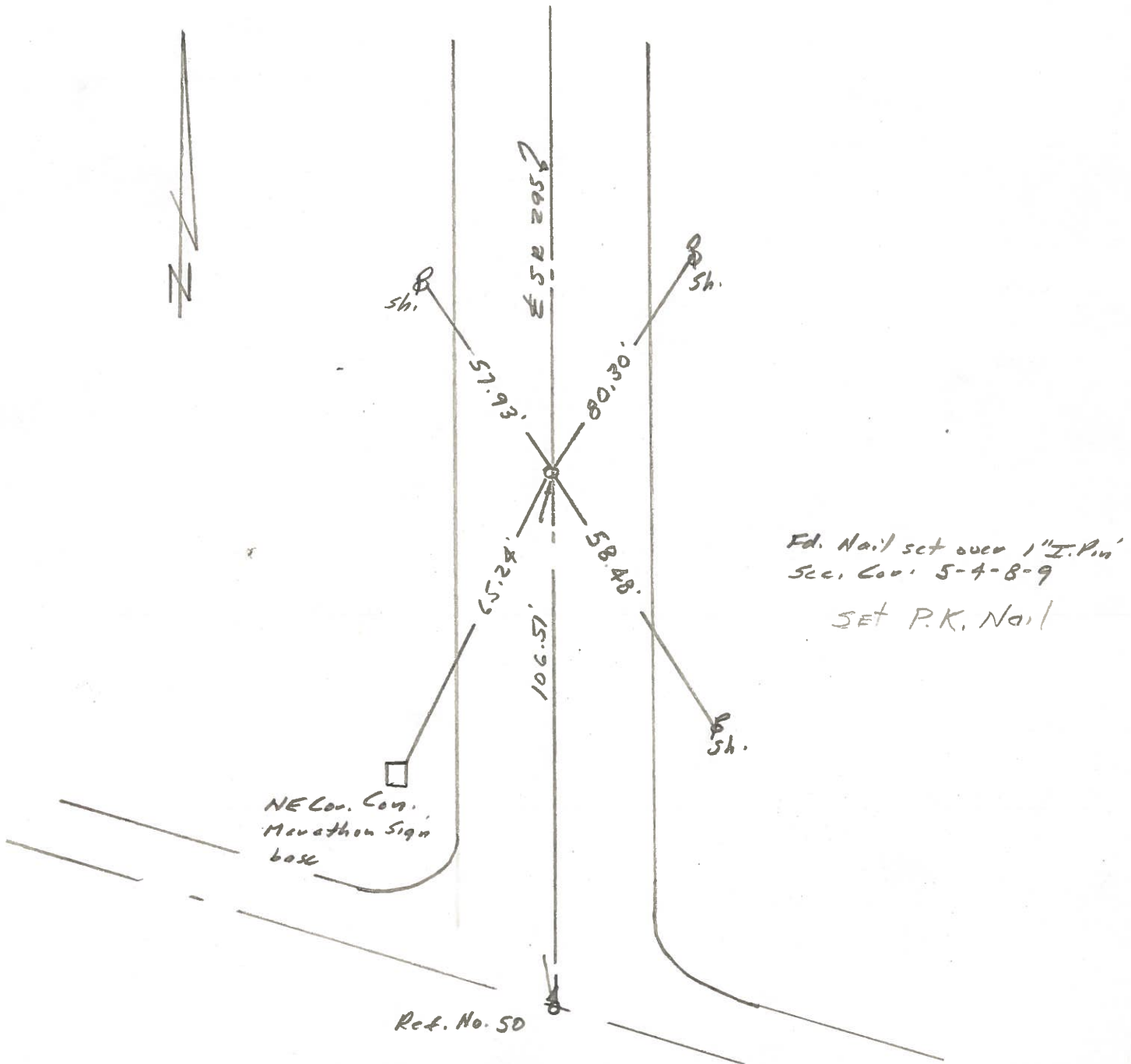
P. Neuser

R. Michalak

P. Curtis

S.L.M. Sta. 1049+38

REF. NO. 51



Ed. Nail set over 1" I. Pin
 Sec. Cor. 5-4-8-9
 SET P.K. Nail

Ref. No. 50

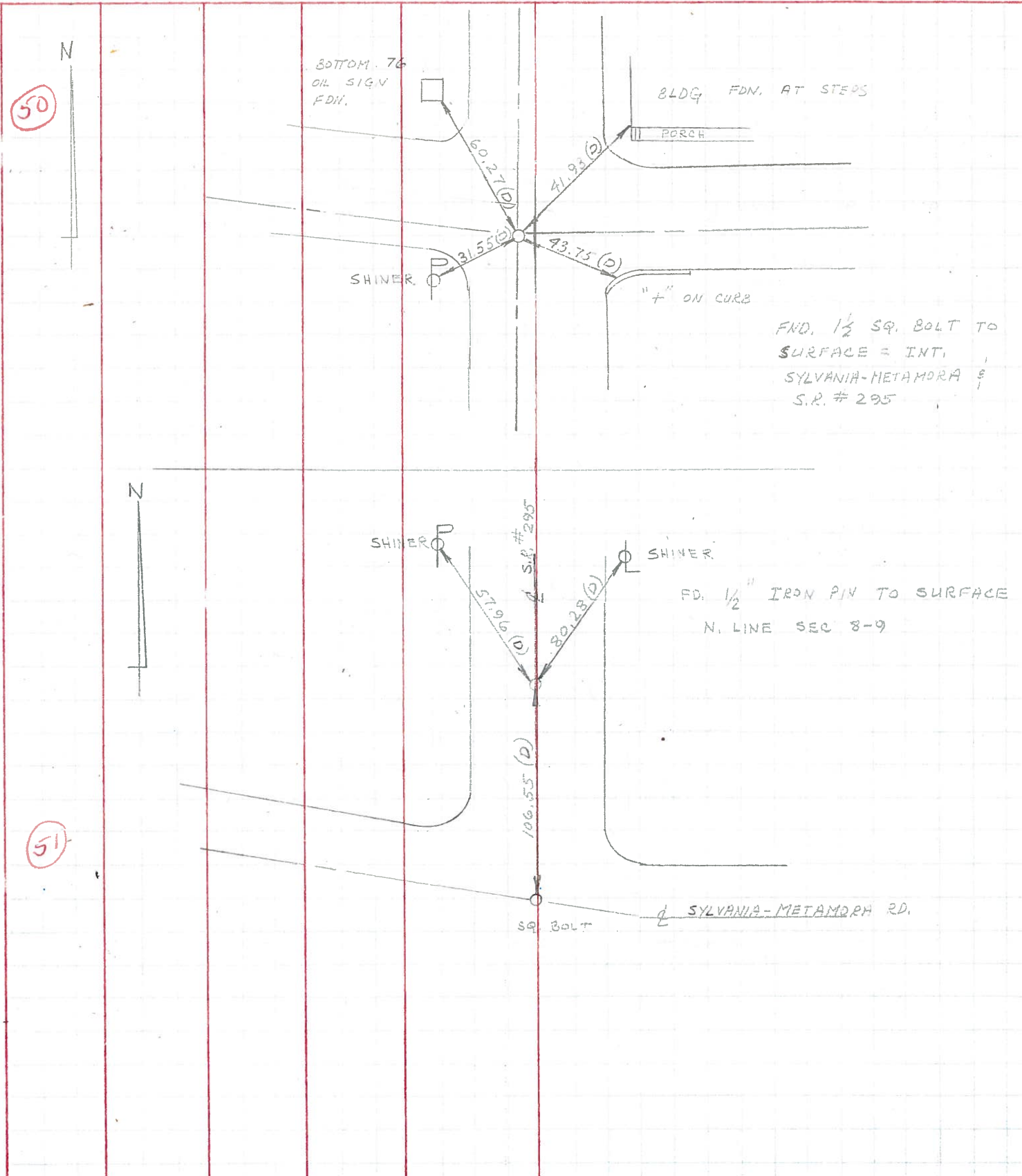
PERSONNEL	TITLE	PERSONNEL	TITLE
W. DENNO			
D. CURTIS			
D. STEVENS			
R. BRANNAN			

COUNTY LUCAS DATE 20 JULY 1971

S. R. # 295 WEATHER FAIR

SEC. _____ TEMP. 70±

DESCRIPTION	REFERENCES TO CONTROL POINTS			JOB NO.
	LEFT	CENTER LINE	RIGHT	



PERSONNEL	TITLE	PERSONNEL	TITLE
Stone	Notes		
Beck	Flag		
Michalok	Tape		
Schroeder	Tape		

COUNTY Lucas DATE 17 June 68
 S. R. #295 WEATHER Fair
 SEC. _____ TEMP. _____

DESCRIPTION References to Control P. JOB NO. _____
 LEFT CENTER LINE RIGHT

