

O.D.O.T. DISTRICT 2 SURVEY OFFICE (USE ONLY)

PERSONNEL

REFERENCE NO. 52

SHEET 7 OF 8

NOTES RHOADES

DATE 11/15/23

ROUTE SR 295

H.C. NIESE

WEATHER SUNNY

COUNTY LUCAS

R.C. ASTON

TEMP. 43°

TOWNSHIP RICHFIELD

MILLER

SECTION 9

DWG BY RHOADES PID 105618

T 9 N R 5 E

TYPE MONUMENT MAG/WASHER

ON SURFACE - ~~BELOW~~ ON

OFFSET Q PAVEMENT 1.5' LT : RT

8.9' TO LT EDGE PAVEMENT

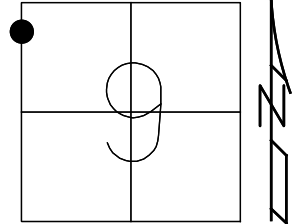
STATION: 1252+42.26

HORIZ.DATUM: NAD83 (2011)

GEOID: NAVD88 2018

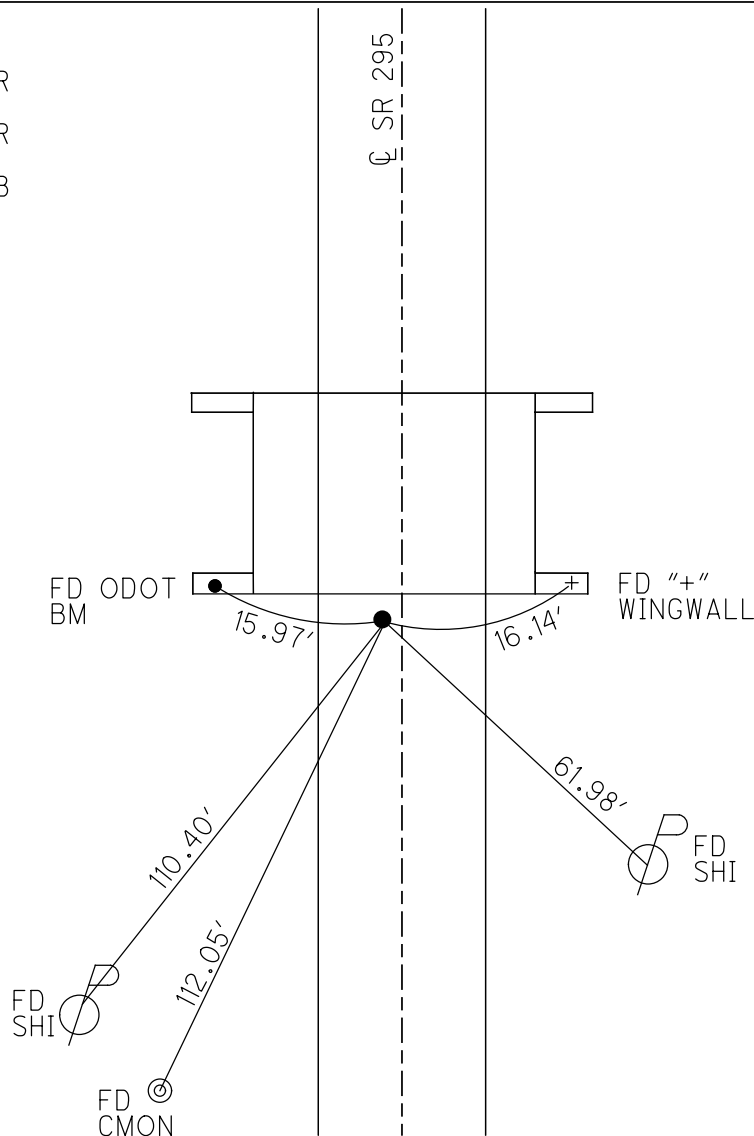
GRID: NORTHING: 750323.518

EASTING: 1602716.714



RECORD:
 FD MAG/WASHER
 5/17/05
 FD MAG/WASHER
 IN CONC.
 APPROACH SLAB
 REF52
 3-6-19, JLL
 FD P.K.NAIL
 REF52
 9/1/23,
 11/15/23, TDN

LUCAS LDP:
 N: 371281.270
 E: 112210.871



O.D.O.T. DISTRICT 2 SURVEY OFFICE (USE ONLY)

PERSONNEL _____

REFERENCE NO. 53

SHEET 8 OF 8

NOTES AUBLE

DATE 5-7-20

ROUTE SR 295

H.C. LEU

WEATHER BREEZY SUNNY

COUNTY LUCAS

R.C. BALBAUGH

TEMP. 55°F

TOWNSHIP RICHFIELD

SECTION 9

DWG BY MAHLER PID 107059

T 9 N R 5 E

TYPE MONUMENT MAG/WASHER

ON SURFACE - ~~BELOW~~ ON

OFFSET ☐ PAVEMENT ON LT : RT

10.7' TO LT EDGE PAVEMENT

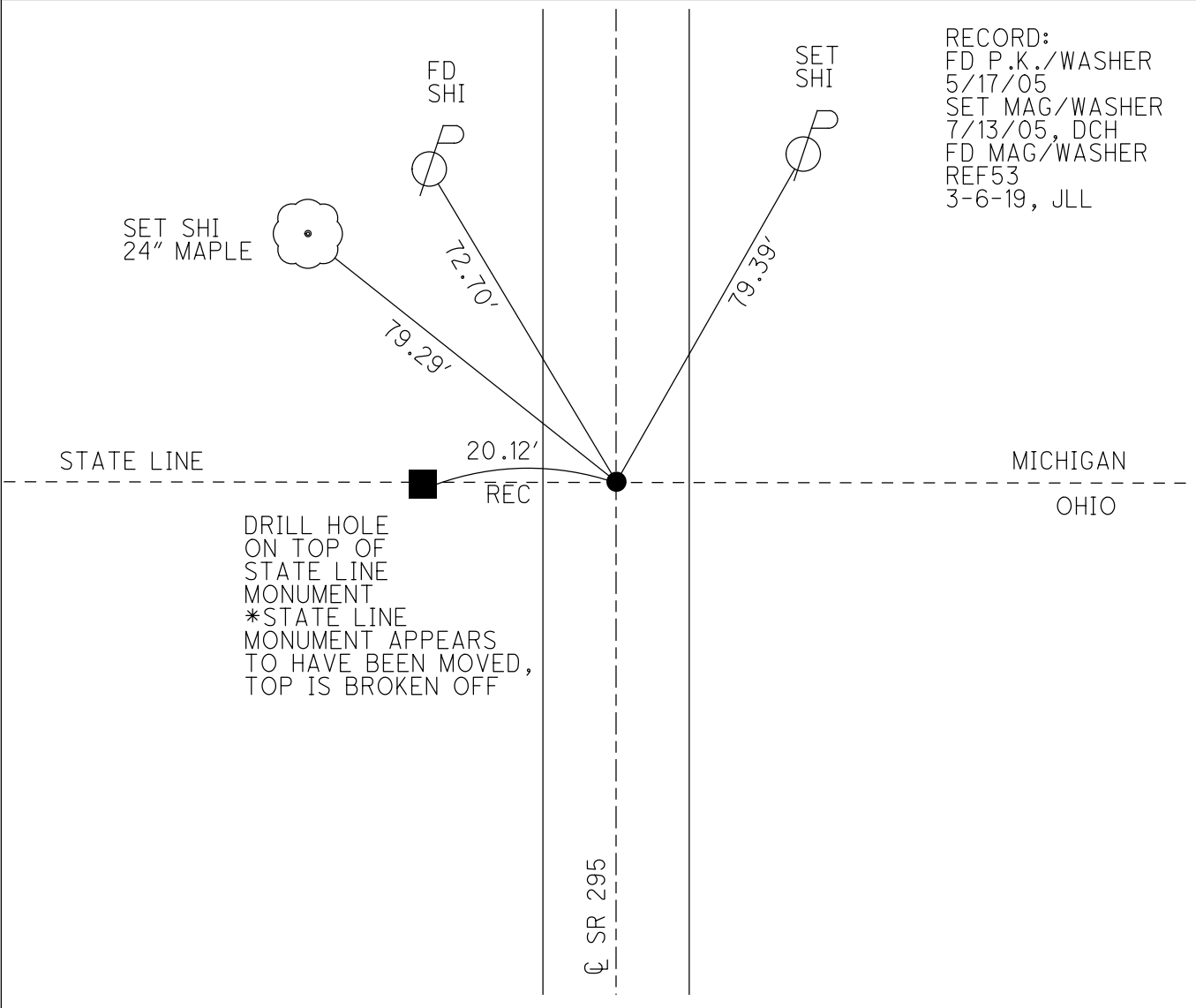
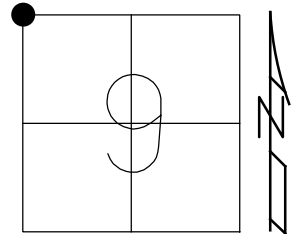
STATION: 1133+11.81

HORZ.DATUM: NAD83 (2011)

GEOID: NAVD88-2012A

GRID: NORTHING: 751455.590

EASTING: 1602698.531

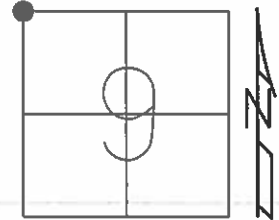


RECORD:
FD P.K./WASHER
5/17/05
SET MAG/WASHER
7/13/05, DCH
FD MAG/WASHER
REF53
3-6-19, JLL

O.D.O.T. DISTRICT 2 SURVEY OFFICE (USE ONLY)

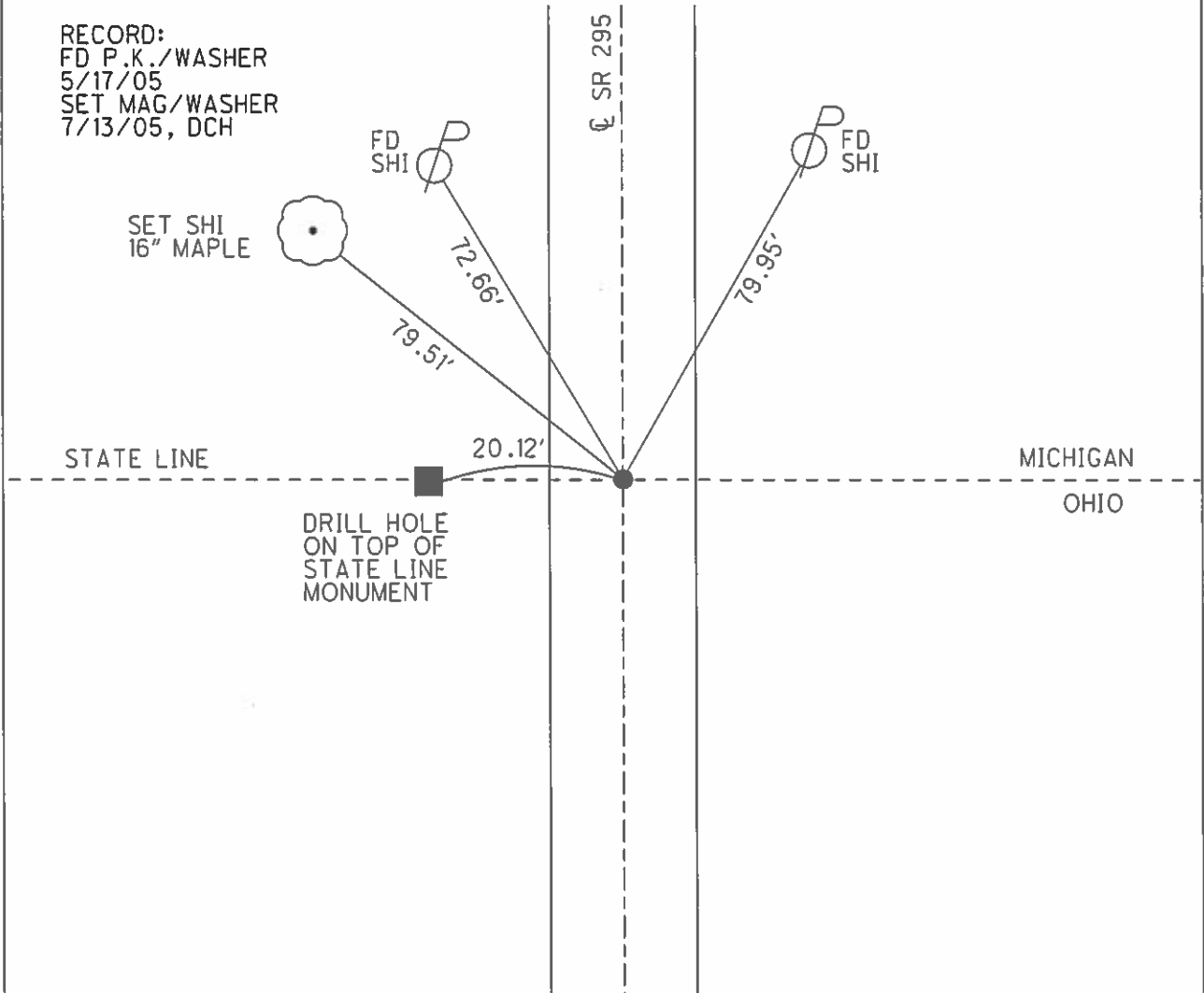
PERSONNEL _____ REFERENCE NO. 53 SHEET 8 OF 8
 NOTES HOMAN DATE 5/18/05 ROUTE SR 295
 H.C. MIKLOVIC WEATHER SUNNY COUNTY LUCAS
 R.C. HERALD TEMP. 65° TOWNSHIP RICHFIELD
 _____ SECTION 9
 _____ T 9 N R 5 E

TYPE MONUMENT _____ MAG/WASHER _____
~~ON SURFACE~~ - BELOW _____ 2' _____
 LEFT - ☉ PAV'T - RIGHT _____ ON _____
10.7' TO LT EDGE PAVEMENT
 S.L.M. _____ 1133+34



Grid: Northing: _____ Easting: _____

RECORD:
 FD P.K./WASHER
 5/17/05
 SET MAG/WASHER
 7/13/05, DCH



O.D.O.T. DISTRICT 2 SURVEY OFFICE

PERSONNEL

REFERENCE NO. 53

SHEET 8 OF 8

NOTES HOMAN

DATE 5-18-05

ROUTE SR 295

H.C. MIKLOVIC

WEATHER SUNNY

COUNTY LUCAS

R.C. HERALD

TEMP. 65°

TOWNSHIP RICHFIELD

SECTION 5

T 9 S R 5 E

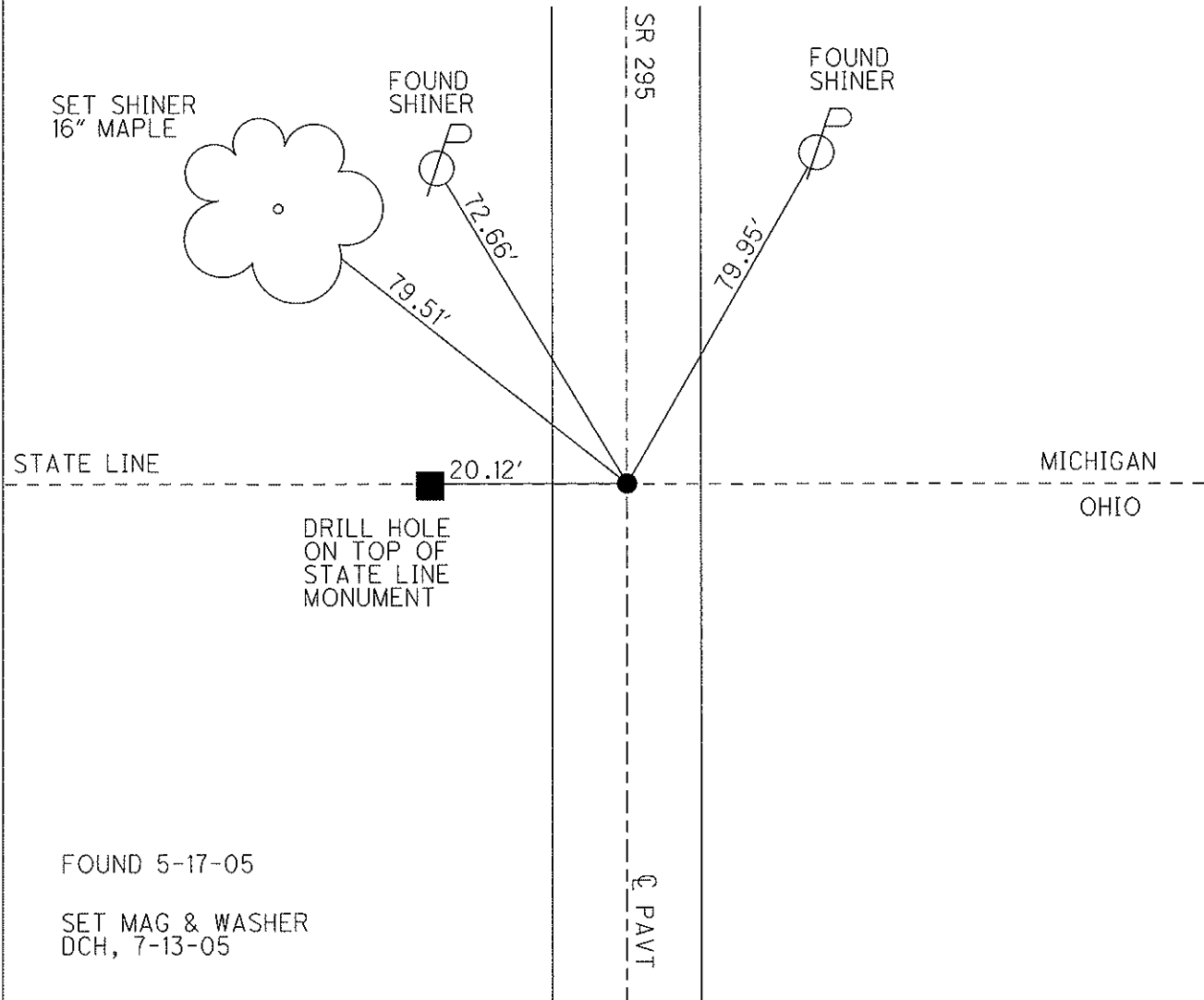
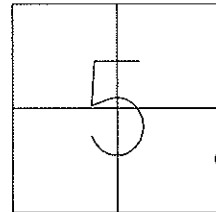
TYPE MONUMENT 1" IRON ROD

~~ON SURFACE~~ - BELOW 2"

LEFT - Q PAV'T - RIGHT ON

10.7' TO LT EDGE PAVEMENT

S.L.M. 1133+34



O.D.O.T. DISTRICT 2 SURVEY OFFICE

PERSONNEL

REFERENCE NO. 53

SHEET 9 OF 9

NOTES LOHRKE / Weaver

H.C. CORDES

DATE 6-26-97

ROUTE S.R. 295

R.C. Cox

WEATHER Sunny

COUNTY LUCAS

TEMP. +85°

TOWNSHIP Richfield

SECTION 5

T 9 S 3 R 5 E

TYPE MONUMENT 1" IRON ROD

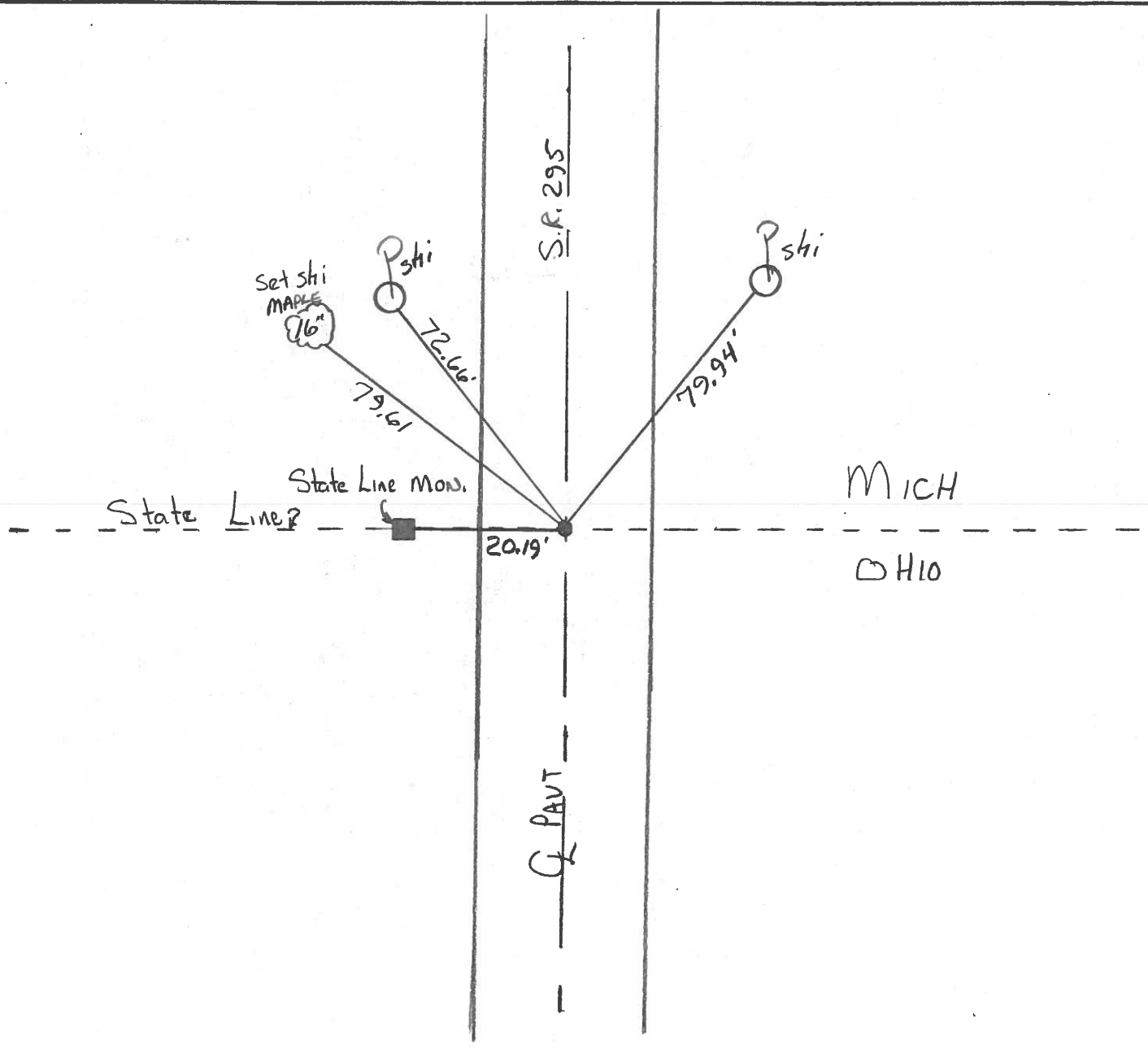
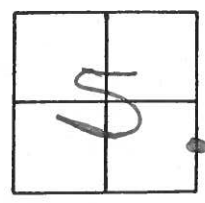
Not Covered
8-28-97
CAL

ON SURFACE - ~~BELOW~~ Yes

~~LEFT~~ - Q PAV'T. - ~~RIGHT~~ ON Q

9.3 TO RT EDGE PAVEMENT

S.L.M. 1133+34



County Lucas S.R. 295

Date 29 June 83

Township Richfield

Weather Cloudy

Section 5

Temp. 67°

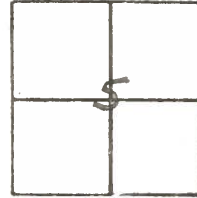
T N, R E

Personnel I. Stone

P. Neuser

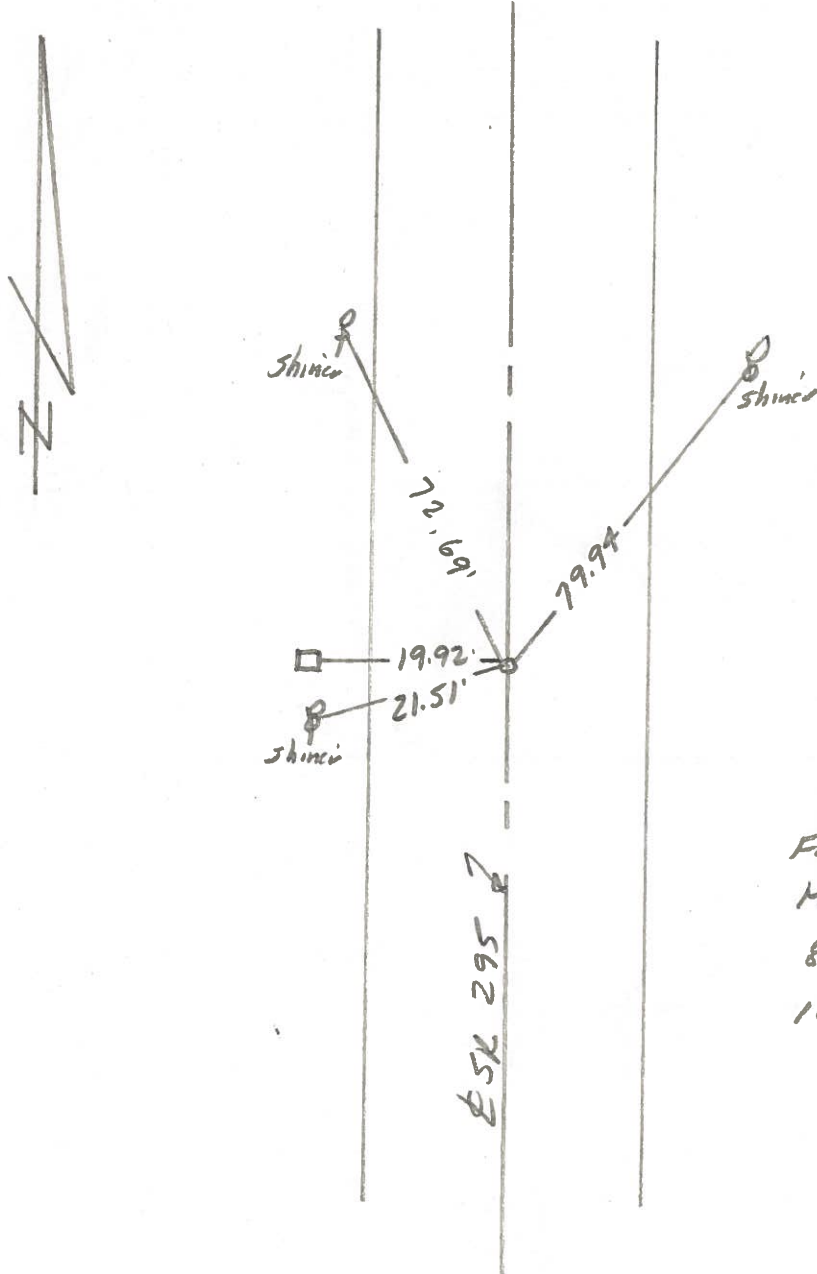
R. Michalak

D. Curtis



SLM Sta.

REF. NO. 53

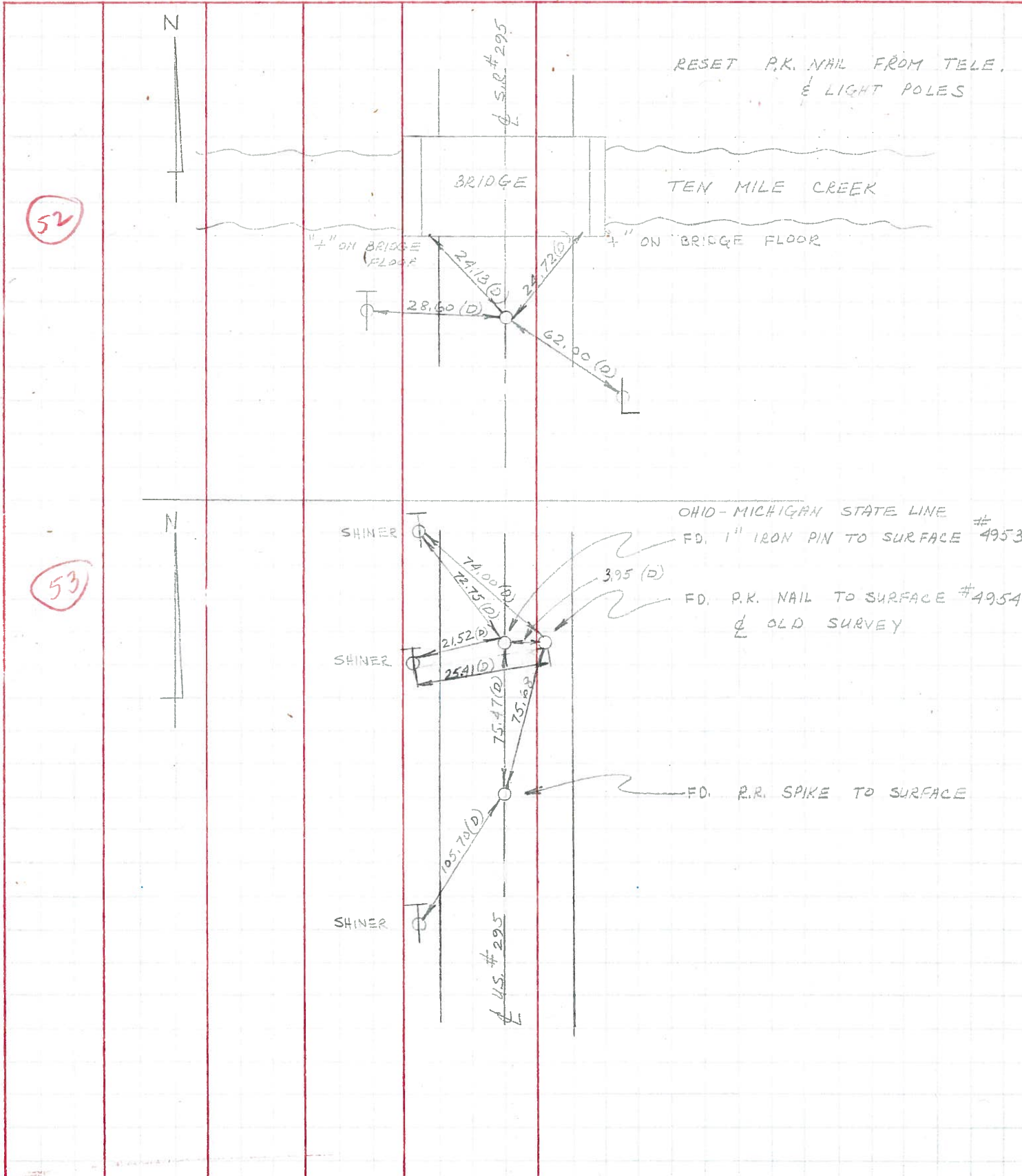


Fd. 1" Iron Rod
Mich - Ohio state Line
8.3' to E. edge put,
10.0' to W. edge put.

Dug

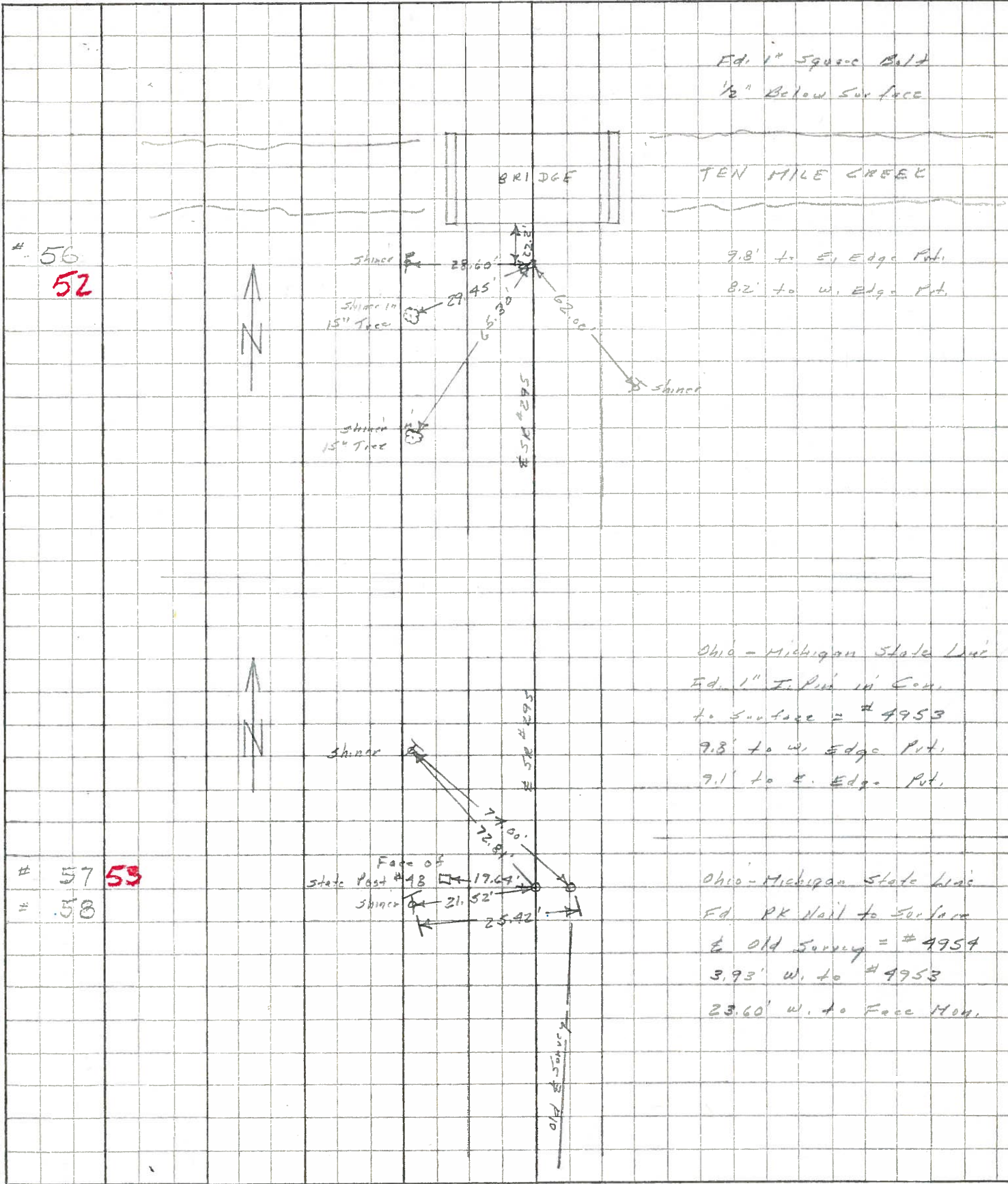
PERSONNEL	TITLE	PERSONNEL	TITLE	COUNTY	DATE	WEATHER	TEMP.
W. DENNO				LUCAS	20 JULY 1971	FAIR	70±
D. CURTIS				#295			
D. STEVENS							
R. BRANNAN							

DESCRIPTION	REFERENCES TO CONTROL POINTS	JOB NO.
	LEFT CENTER LINE RIGHT	



PERSONNEL	TITLE	PERSONNEL	TITLE	COUNTY	DATE	WEATHER	TEMP.
Stone	Notes			Lucas	17 June 68	Fair	63°
Beck	Flag			S. R. # 295			
Michalok	Tape						
Schroder	Tape						

DESCRIPTION References to Central Points JOB NO. _____



56
52

Ed. 1" Square Bolt
1/2" Below Surface

7.8' to E. Edge Pnt.
8.2' to W. Edge Pnt.

Ohio - Michigan State Line
Ed. 1" I. Pnt. in Corn.
to Surface = # 4953
7.8' to W. Edge Pnt.
7.1' to E. Edge Pnt.

57 53
58

Ohio - Michigan State Line
Ed. PK Nail to Surface
& Old Survey = # 4954
3.93' W. to # 4953
23.60' W. to Face Mon.