



PID NO. **95875**

R/W DESIGNER: MJP
R/W REVIEWER: JRM

CENTERLINE PLAT

LUC-475-0.09

1
13

BASIS FOR BEARINGS:

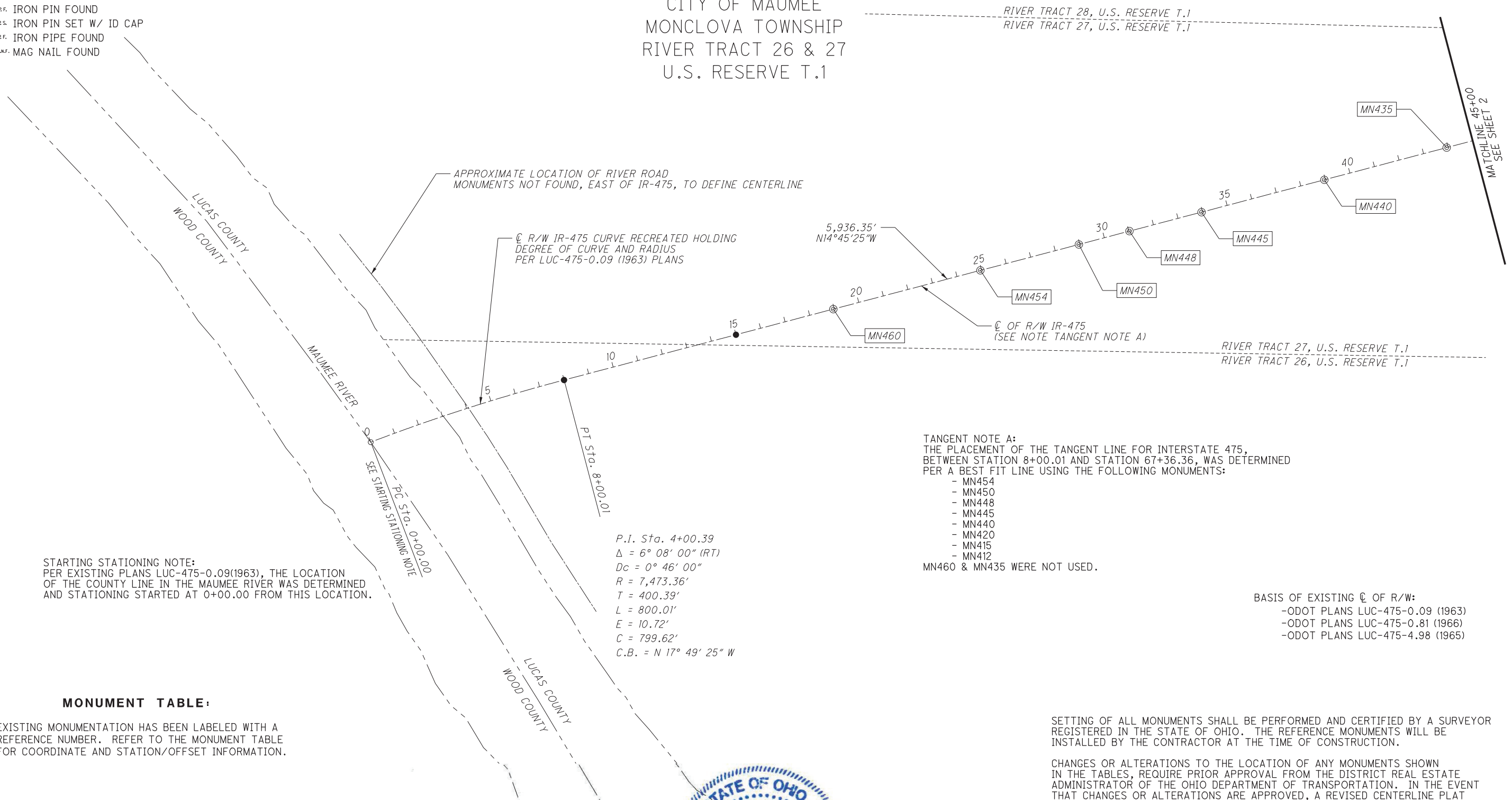
BEARINGS USED HERE IN ARE BASED ON OHIO STATE PLANE COORDINATE SYSTEM, NORTH ZONE NAD83(2011) AND ARE FOR PROJECT USE ONLY.

LUC-475-0.09

LUCAS COUNTY
CITY OF MAUMEE
MONCLOVA TOWNSHIP
RIVER TRACT 26 & 27
U.S. RESERVE T.1

MONUMENT LEGEND

- EXISTING R/W MONUMENT BOX
- PROPOSED R/W MONUMENT BOX
- EXISTING 8"Ø CONCRETE MONUMENT WITH 1/2" IRON PIN UNLESS OTHERWISE NOTED
- PROPOSED CONCRETE MONUMENT
- IRON PIN FOUND
- IRON PIN SET W/ ID CAP
- IRON PIPE FOUND
- MAG NAIL FOUND



STARTING STATIONING NOTE:
PER EXISTING PLANS LUC-475-0.09(1963), THE LOCATION OF THE COUNTY LINE IN THE MAUMEE RIVER WAS DETERMINED AND STATIONING STARTED AT 0+00.00 FROM THIS LOCATION.

P.I. Sta. 4+00.39
Δ = 6° 08' 00" (RT)
Dc = 0° 46' 00"
R = 7,473.36'
T = 400.39'
L = 800.01'
E = 10.72'
C = 799.62'
C.B. = N 17° 49' 25" W

TANGENT NOTE A:
THE PLACEMENT OF THE TANGENT LINE FOR INTERSTATE 475, BETWEEN STATION 8+00.01 AND STATION 67+36.36, WAS DETERMINED PER A BEST FIT LINE USING THE FOLLOWING MONUMENTS:
- MN454
- MN450
- MN448
- MN445
- MN440
- MN420
- MN415
- MN412
MN460 & MN435 WERE NOT USED.

BASIS OF EXISTING C OF R/W:
-ODOT PLANS LUC-475-0.09 (1963)
-ODOT PLANS LUC-475-0.81 (1966)
-ODOT PLANS LUC-475-4.98 (1965)

MONUMENT TABLE:

EXISTING MONUMENTATION HAS BEEN LABELED WITH A REFERENCE NUMBER. REFER TO THE MONUMENT TABLE FOR COORDINATE AND STATION/OFFSET INFORMATION.

I, Matthew J. Puhl, P. S. have conducted a survey of the existing conditions for the Ohio Department of Transportation between the Spring of 2016 through the Spring of 2017. The results of that survey are contained herein. The horizontal coordinates expressed herein are based on the Ohio State Plane Coordinates System North Zone on NAD 83 (2011) horizontal datum and NAVD88 vertical datum. The Project Coordinates (US Survey Feet) are relative to State Plane Grid Coordinates (Meters) by a Project Adjustment Factor of 3.280975728. As a part of this project I have reestablished the existing centerline of Right of Way for Interstate 475. All of my work contained herein was conducted in accordance with Ohio Administrative Code 4733-37 commonly known as "Minimum Standards for Boundary Surveys in the State of Ohio" unless noted. The words I and my as used herein are to mean either myself or someone working under my direct supervision.

Matthew J. Puhl 07-08-2021
Matthew J. Puhl, Professional Land Surveyor #8363



Q.I.P.F. MN1003

SETTING OF ALL MONUMENTS SHALL BE PERFORMED AND CERTIFIED BY A SURVEYOR REGISTERED IN THE STATE OF OHIO. THE REFERENCE MONUMENTS WILL BE INSTALLED BY THE CONTRACTOR AT THE TIME OF CONSTRUCTION.

CHANGES OR ALTERATIONS TO THE LOCATION OF ANY MONUMENTS SHOWN IN THE TABLES, REQUIRE PRIOR APPROVAL FROM THE DISTRICT REAL ESTATE ADMINISTRATOR OF THE OHIO DEPARTMENT OF TRANSPORTATION. IN THE EVENT THAT CHANGES OR ALTERATIONS ARE APPROVED, A REVISED CENTERLINE PLAT WITH THE NEW LOCATIONS SHALL BE RECORDED IN THE APPLICABLE COUNTY RECORDS AND THE OHIO DEPARTMENT OF TRANSPORTATION. SPECIFICATIONS FOR MONUMENT ASSEMBLIES, REFERENCE MONUMENTS AND RIGHT OF WAY MONUMENTS ARE SHOWN ON STANDARD CONSTRUCTION DRAWING RM-1.1.

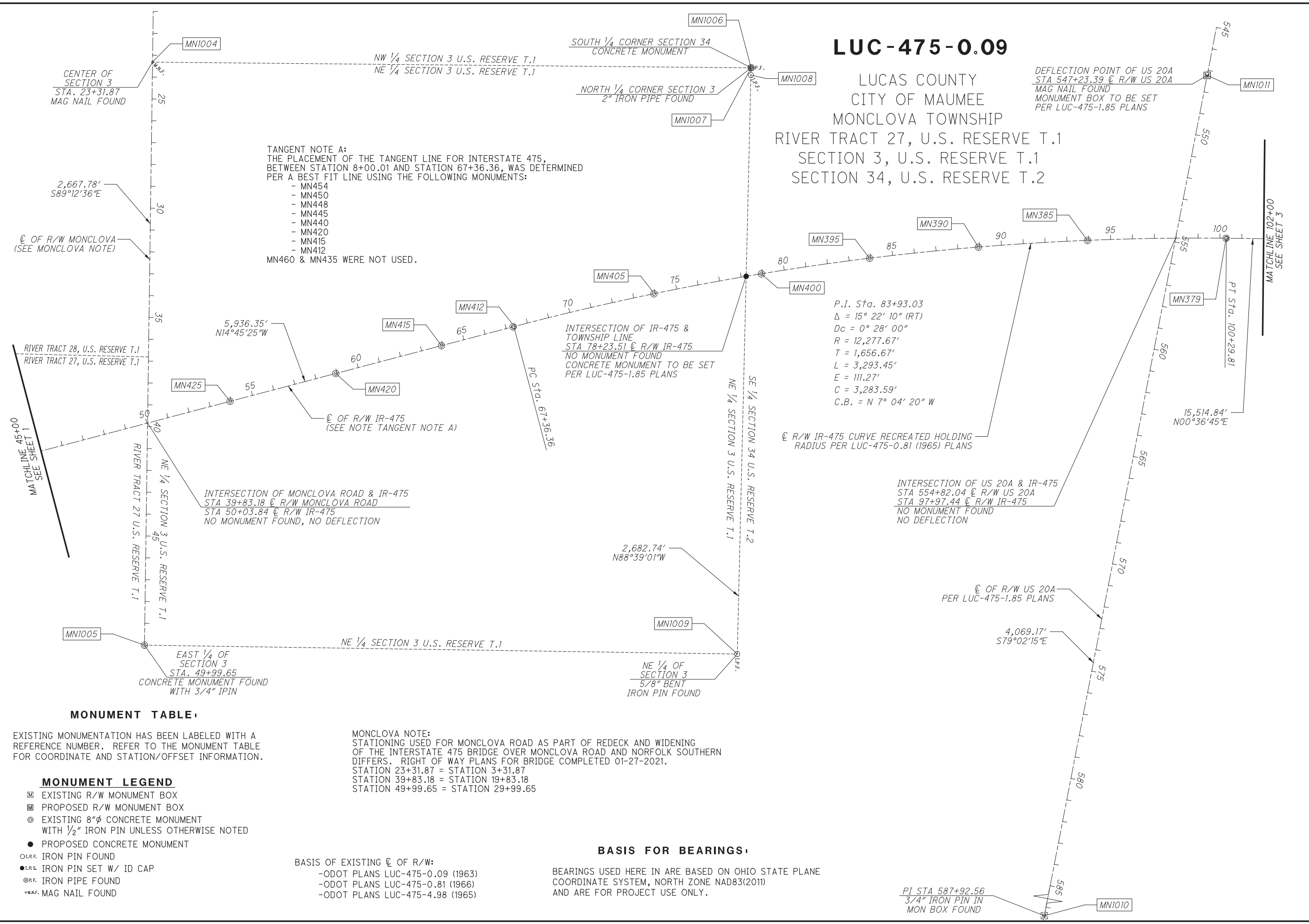
RECEIVED: JULY 9, 2021
RECORDED: JULY 9, 2021
INSTRUMENT NO. 202107090035186
MICHAEL D. ASHFORD
LUCAS COUNTY RECORDER

Z:\NCIN\Toledo\Survey\16076-0056-00DOT_VAR-D02-S&RW_19021\ND2_S&R - LUC-475 Centerline\survey\Sheets\95875_RC001.dgn Sheet 7/12/2021 8:56:30 AM jimhelcic

LUC-475-0.09

LUCAS COUNTY
 CITY OF MAUMEE
 MONCLOVA TOWNSHIP
 RIVER TRACT 27, U.S. RESERVE T.1
 SECTION 3, U.S. RESERVE T.1
 SECTION 34, U.S. RESERVE T.2

DEFLECTION POINT OF US 20A
 STA 547+23.39 @ R/W US 20A
 MAG NAIL FOUND
 MONUMENT BOX TO BE SET
 PER LUC-475-1.85 PLANS



TANGENT NOTE A:
 THE PLACEMENT OF THE TANGENT LINE FOR INTERSTATE 475,
 BETWEEN STATION 8+00.01 AND STATION 67+36.36, WAS DETERMINED
 PER A BEST FIT LINE USING THE FOLLOWING MONUMENTS:

- MN454
 - MN450
 - MN448
 - MN445
 - MN440
 - MN420
 - MN415
 - MN412
- MN460 & MN435 WERE NOT USED.

INTERSECTION OF IR-475 &
 TOWNSHIP LINE
 STA 78+23.51 @ R/W IR-475
 NO MONUMENT FOUND
 CONCRETE MONUMENT TO BE SET
 PER LUC-475-1.85 PLANS

P.I. Sta. 83+93.03
 $\Delta = 15^\circ 22' 10''$ (RT)
 $D_c = 0^\circ 28' 00''$
 $R = 12,277.67'$
 $T = 1,656.67'$
 $L = 3,293.45'$
 $E = 111.27'$
 $C = 3,283.59'$
 $C.B. = N 7^\circ 04' 20'' W$

@ R/W IR-475 CURVE RECREATED HOLDING
 RADIUS PER LUC-475-0.81 (1965) PLANS

INTERSECTION OF US 20A & IR-475
 STA 554+82.04 @ R/W US 20A
 STA 97+97.44 @ R/W IR-475
 NO MONUMENT FOUND
 NO DEFLECTION

MONUMENT TABLE

EXISTING MONUMENTATION HAS BEEN LABELED WITH A
 REFERENCE NUMBER. REFER TO THE MONUMENT TABLE
 FOR COORDINATE AND STATION/OFFSET INFORMATION.

MONUMENT LEGEND

- EXISTING R/W MONUMENT BOX
- PROPOSED R/W MONUMENT BOX
- EXISTING 8" φ CONCRETE MONUMENT WITH 1/2" IRON PIN UNLESS OTHERWISE NOTED
- PROPOSED CONCRETE MONUMENT
- I.P.F. IRON PIN FOUND
- I.P.S. IRON PIN SET W/ ID CAP
- I.P.F. IRON PIPE FOUND
- M.N.F. MAG NAIL FOUND

MONCLOVA NOTE:
 STATIONING USED FOR MONCLOVA ROAD AS PART OF REDECK AND WIDENING
 OF THE INTERSTATE 475 BRIDGE OVER MONCLOVA ROAD AND NORFOLK SOUTHERN
 DIFFERS. RIGHT OF WAY PLANS FOR BRIDGE COMPLETED 01-27-2021.
 STATION 23+31.87 = STATION 3+31.87
 STATION 39+83.18 = STATION 19+83.18
 STATION 49+99.65 = STATION 29+99.65

BASIS OF EXISTING @ OF R/W:
 -ODOT PLANS LUC-475-0.09 (1963)
 -ODOT PLANS LUC-475-0.81 (1966)
 -ODOT PLANS LUC-475-4.98 (1965)

BASIS FOR BEARINGS

BEARINGS USED HERE IN ARE BASED ON OHIO STATE PLANE
 COORDINATE SYSTEM, NORTH ZONE NAD83(2011)
 AND ARE FOR PROJECT USE ONLY.

Z:\NCL\Toledo\Survey\16076-0056-0DOT_VAR-D02-S&RW_1902IND2_S&R - LUC-475 Centerline\survey\Sheets\95875-Rc002.dgn Sheet 7/7/2021 4:01:15 PM jmlhelic

Z:\NCL\Toledo\Survey\16076-0056_0DOT_VAR-D02-S&RW_1902IND2_S&R - LUC-475 Centerline\surveys\95875-RC003.dgn Sheet 7/7/2021 4:05:46 PM jmhelcic

TANGENT NOTE B:
 THE PLACEMENT OF THE TANGENT LINE FOR INTERSTATE 475,
 BETWEEN STATION 100+29.81 AND STATION 255+44.65, WAS DETERMINED
 PER A BEST FIT LINE USING THE FOLLOWING MONUMENTS:

- MN375
 - MN370
 - MN365
 - MN360
 - MN355
 - MN350
 - MN285
 - MN280
 - MN275
 - MN270
 - MN265
 - MN260
 - MN255
 - MN251
 - MN245
 - MN240
 - MN235
 - MN231
 - MN229
 - MN223
- MN379 WAS NOT USED.

LUC-475-0.09

LUCAS COUNTY MONCLOVA TOWNSHIP SECTION 27 & 34, U.S. RESERVE T.2

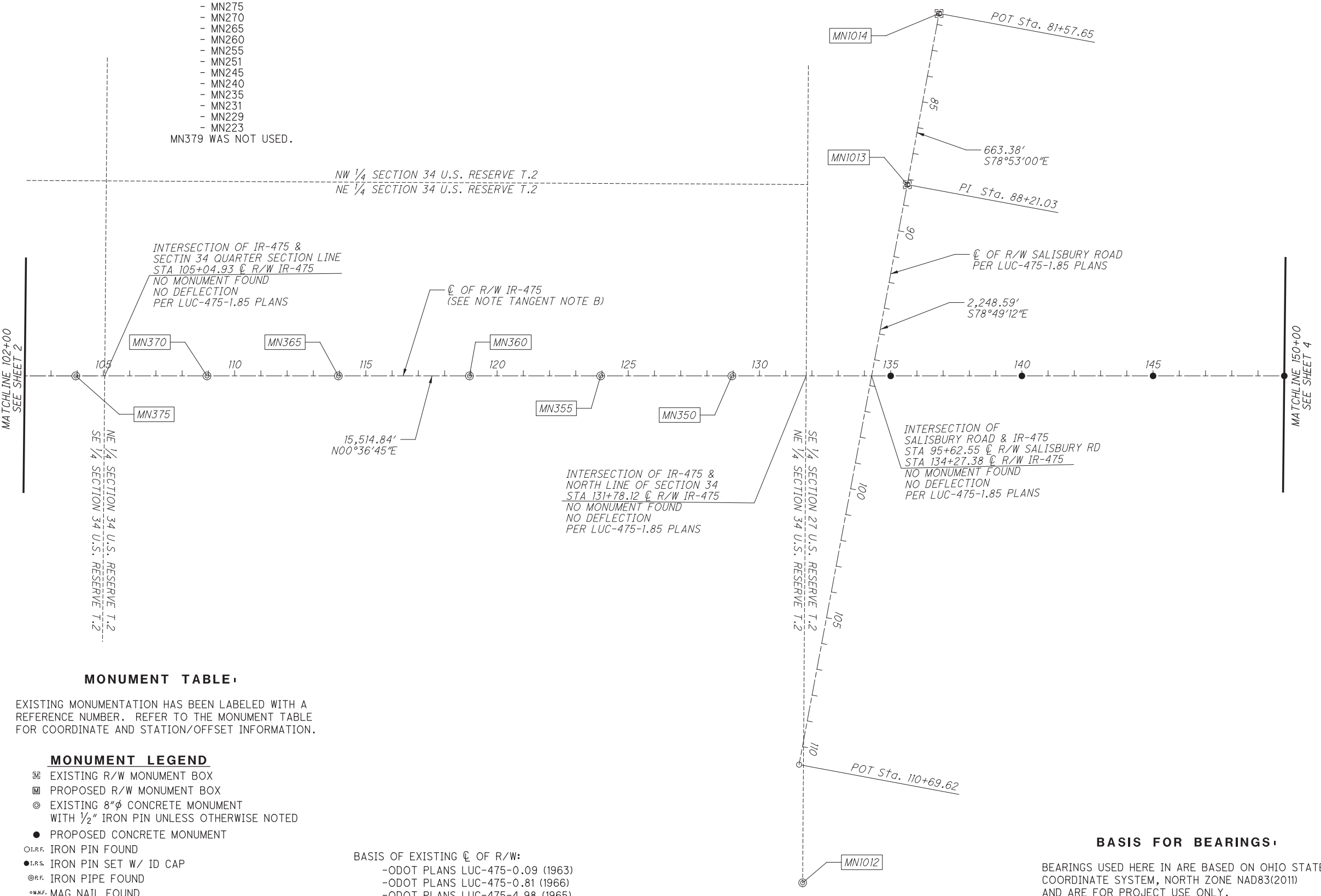


PID NO. **95875**
 R/W DESIGNER: MJP
 R/W REVIEWER: JRM

CENTERLINE PLAT

LUC-475-0.09

3
13



MONUMENT TABLE

EXISTING MONUMENTATION HAS BEEN LABELED WITH A REFERENCE NUMBER. REFER TO THE MONUMENT TABLE FOR COORDINATE AND STATION/OFFSET INFORMATION.

MONUMENT LEGEND

- ☐ EXISTING R/W MONUMENT BOX
- ▣ PROPOSED R/W MONUMENT BOX
- ⊙ EXISTING 8" ϕ CONCRETE MONUMENT WITH 1/2" IRON PIN UNLESS OTHERWISE NOTED
- PROPOSED CONCRETE MONUMENT
- I.P.F. IRON PIN FOUND
- I.P.S. IRON PIN SET W/ ID CAP
- ⊙ I.P.F. IRON PIPE FOUND
- M.N.F. MAG NAIL FOUND

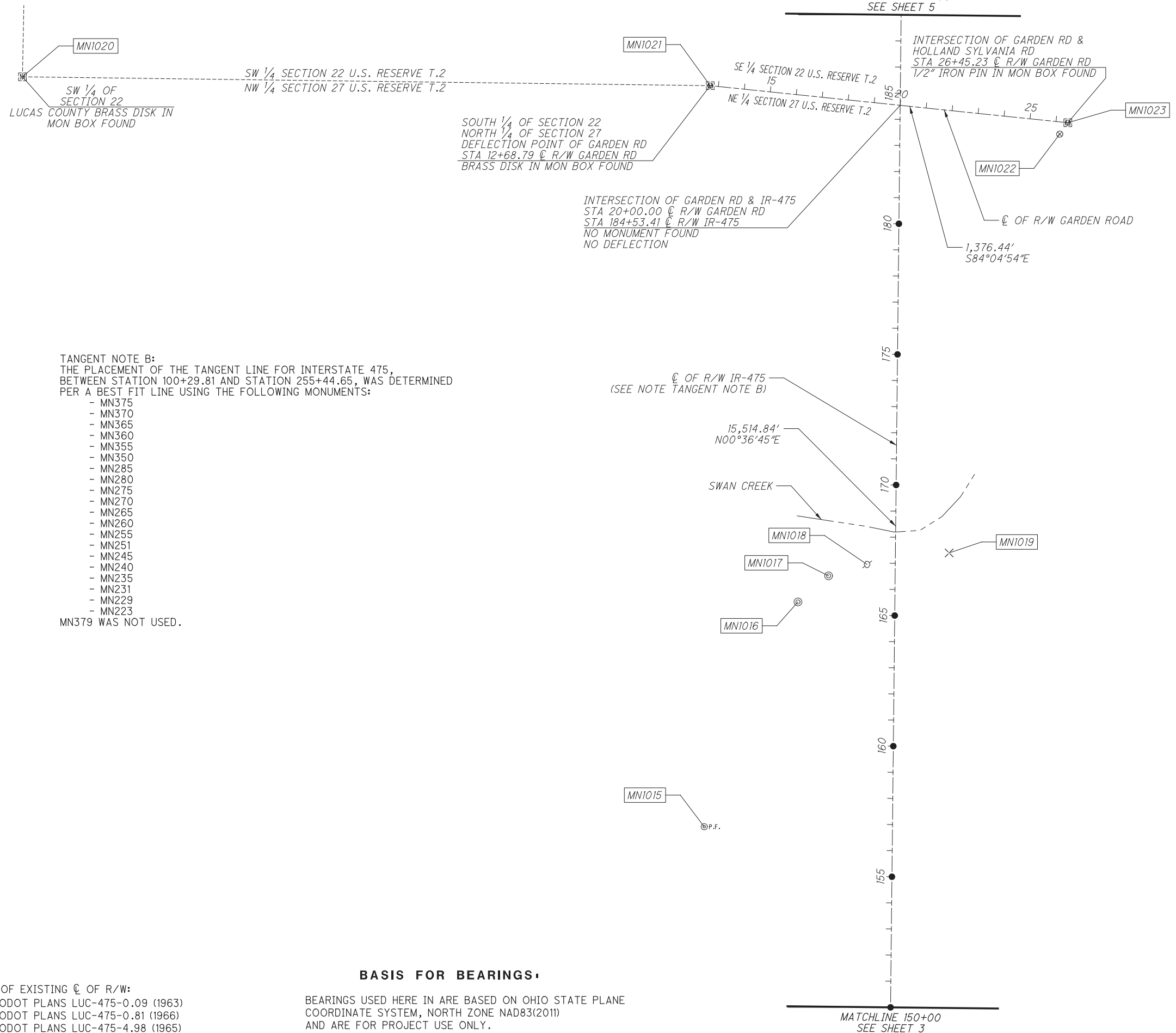
BASIS OF EXISTING ϕ OF R/W:
 -ODOT PLANS LUC-475-0.09 (1963)
 -ODOT PLANS LUC-475-0.81 (1966)
 -ODOT PLANS LUC-475-4.98 (1965)

BASIS FOR BEARINGS

BEARINGS USED HERE IN ARE BASED ON OHIO STATE PLANE COORDINATE SYSTEM, NORTH ZONE NAD83(2011) AND ARE FOR PROJECT USE ONLY.

LUC-475-0.09

LUCAS COUNTY
MONCLOVA TOWNSHIP
SECTION 27, U.S. RESERVE T.2
SPRINGFIELD TOWNSHIP
SECTION 22, U.S. RESERVE T.2



TANGENT NOTE B:
THE PLACEMENT OF THE TANGENT LINE FOR INTERSTATE 475,
BETWEEN STATION 100+29.81 AND STATION 255+44.65, WAS DETERMINED
PER A BEST FIT LINE USING THE FOLLOWING MONUMENTS:

- MN375
 - MN370
 - MN365
 - MN360
 - MN355
 - MN350
 - MN285
 - MN280
 - MN275
 - MN270
 - MN265
 - MN260
 - MN255
 - MN251
 - MN245
 - MN240
 - MN235
 - MN231
 - MN229
 - MN223
- MN379 WAS NOT USED.

MONUMENT TABLE

EXISTING MONUMENTATION HAS BEEN LABELED WITH A
REFERENCE NUMBER. REFER TO THE MONUMENT TABLE
FOR COORDINATE AND STATION/OFFSET INFORMATION.

MONUMENT LEGEND

- ▣ EXISTING R/W MONUMENT BOX
- ▣ PROPOSED R/W MONUMENT BOX
- ⊙ EXISTING 8" ϕ CONCRETE MONUMENT
WITH 1/2" IRON PIN UNLESS OTHERWISE NOTED
- PROPOSED CONCRETE MONUMENT
- I.P.F. IRON PIN FOUND
- I.P.S. IRON PIN SET W/ ID CAP
- ⊙ I.P.F. IRON PIPE FOUND
- M.N.F. MAG NAIL FOUND

BASIS OF EXISTING ϕ OF R/W:
-ODOT PLANS LUC-475-0.09 (1963)
-ODOT PLANS LUC-475-0.81 (1966)
-ODOT PLANS LUC-475-4.98 (1965)

BASIS FOR BEARINGS

BEARINGS USED HERE IN ARE BASED ON OHIO STATE PLANE
COORDINATE SYSTEM, NORTH ZONE NAD83(2011)
AND ARE FOR PROJECT USE ONLY.

Z:\NCL\Toledo\Survey\16076-0056-0DOT_VAR-D02-S&RW_1902IND2_S&R - LUC-475 Centerline\survey\Sheets\95875-RC004.dgn Sheet 7/7/2021 4:25:55 PM jimhelcic



PID NO. **95875**

R/W DESIGNER: MJP
R/W REVIEWER: JRM

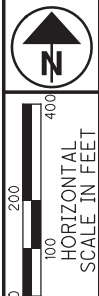
CENTERLINE PLAT

LUC-475-0.09

4
13

LUC-475-0.09

LUCAS COUNTY SPRINGFIELD TOWNSHIP SECTION 22, U.S. RESERVE T.2



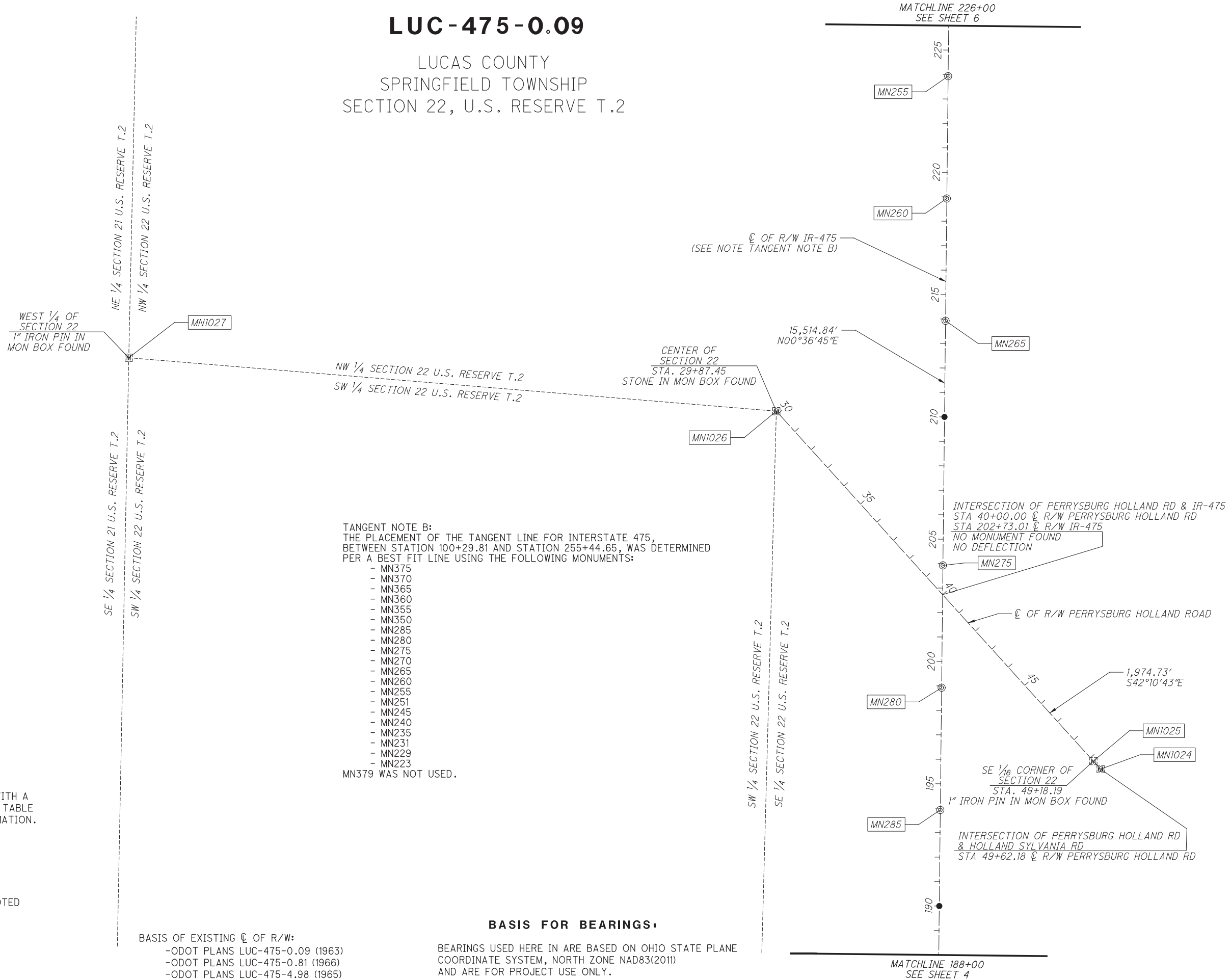
PID NO.
95875

R/W DESIGNER
MJP
R/W REVIEWER
JRM

CENTERLINE PLAT

LUC-475-0.09

5
13



TANGENT NOTE B:
THE PLACEMENT OF THE TANGENT LINE FOR INTERSTATE 475, BETWEEN STATION 100+29.81 AND STATION 255+44.65, WAS DETERMINED PER A BEST FIT LINE USING THE FOLLOWING MONUMENTS:

- MN375
 - MN370
 - MN365
 - MN360
 - MN355
 - MN350
 - MN285
 - MN280
 - MN275
 - MN270
 - MN265
 - MN260
 - MN255
 - MN251
 - MN245
 - MN240
 - MN235
 - MN231
 - MN229
 - MN223
- MN379 WAS NOT USED.

BASIS FOR BEARINGS:
BEARINGS USED HERE IN ARE BASED ON OHIO STATE PLANE COORDINATE SYSTEM, NORTH ZONE NAD83(2011) AND ARE FOR PROJECT USE ONLY.

BASIS OF EXISTING C OF R/W:
-ODOT PLANS LUC-475-0.09 (1963)
-ODOT PLANS LUC-475-0.81 (1966)
-ODOT PLANS LUC-475-4.98 (1965)

MONUMENT TABLE:

EXISTING MONUMENTATION HAS BEEN LABELED WITH A REFERENCE NUMBER. REFER TO THE MONUMENT TABLE FOR COORDINATE AND STATION/OFFSET INFORMATION.

MONUMENT LEGEND

- ▣ EXISTING R/W MONUMENT BOX
- ▣ PROPOSED R/W MONUMENT BOX
- ⊙ EXISTING 8"φ CONCRETE MONUMENT WITH 1/2" IRON PIN UNLESS OTHERWISE NOTED
- PROPOSED CONCRETE MONUMENT
- I.P.F. IRON PIN FOUND
- I.P.S. IRON PIN SET W/ ID CAP
- ⊙ I.P.F. IRON PIPE FOUND
- M.N.F. MAG NAIL FOUND

Z:\N\N\Toledo\Survey\16076-0056_0DOT_VAR-D02-S&RW_1902IND2_S&R - LUC-475 Centerline\survey\Sheets\95875_R0005.dgn Sheet 7/7/2021 4:29:28 PM jimhelcic

LUC-475-0.09

LUCAS COUNTY SPRINGFIELD TOWNSHIP SECTION 15 & 22, U.S. RESERVE T.2

MATCHLINE 264+00
SEE SHEET 7

P.I. Sta. 262+98.89
 $\Delta = 7^\circ 01' 51''$ (LT)
 $Dc = 0^\circ 28' 00''$
 $R = 12,277.67'$
 $T = 754.24'$
 $L = 1,506.58'$
 $E = 23.15'$
 $C = 1,505.64'$
 $C.B. = N 2^\circ 54' 10'' W$

☉ R/W IR-475 CURVE RECREATED HOLDING
 RADIUS PER LUC-475-4.98 (1965) PLANS

MN1031
 EAST 1/4 OF SECTION 15
 1" IRON PIN IN MON BOX FOUND

NE 1/4 SECTION 15 U.S. RESERVE T.2
 NW 1/4 SECTION 14 U.S. RESERVE T.2

PC Sta. 255+44.65

TANGENT NOTE B:
 THE PLACEMENT OF THE TANGENT LINE FOR INTERSTATE 475,
 BETWEEN STATION 100+29.81 AND STATION 255+44.65, WAS DETERMINED
 PER A BEST FIT LINE USING THE FOLLOWING MONUMENTS:

- MN375
- MN370
- MN365
- MN360
- MN355
- MN350
- MN285
- MN280
- MN275
- MN270
- MN265
- MN260
- MN255
- MN251
- MN245
- MN240
- MN235
- MN231
- MN229
- MN223

MN379 WAS NOT USED.

☉ OF R/W IR-475
 (SEE NOTE TANGENT NOTE B)

15,514.84'
 $N00^\circ 36' 45'' E$

APPROXIMATE LOCATION OF SECTION LINE
 SOUTH 1/4 CORNER NOT FOUND

SPRINGFIELD TOWNSHIP
 SE 1/4 SECTION 15 U.S. RESERVE T.2
 SW 1/4 SECTION 14 U.S. RESERVE T.2
 CITY OF TOLEDO

MN1028
 SE 1/4 OF SECTION 15
 BRASS DISK IN MON BOX FOUND

MONUMENT TABLE

EXISTING MONUMENTATION HAS BEEN LABELED WITH A REFERENCE NUMBER. REFER TO THE MONUMENT TABLE FOR COORDINATE AND STATION/OFFSET INFORMATION.

MONUMENT LEGEND

- ☐ EXISTING R/W MONUMENT BOX
- ▣ PROPOSED R/W MONUMENT BOX
- ⊙ EXISTING 8" ϕ CONCRETE MONUMENT WITH 1/2" IRON PIN UNLESS OTHERWISE NOTED
- PROPOSED CONCRETE MONUMENT
- I.P.F. IRON PIN FOUND
- I.P.S. IRON PIN SET W/ ID CAP
- ⊙ I.P.F. IRON PIPE FOUND
- M.N.F. MAG NAIL FOUND

BASIS OF EXISTING ϕ OF R/W:
 -ODOT PLANS LUC-475-0.09 (1963)
 -ODOT PLANS LUC-475-0.81 (1966)
 -ODOT PLANS LUC-475-4.98 (1965)

BASIS FOR BEARINGS

BEARINGS USED HERE IN ARE BASED ON OHIO STATE PLANE COORDINATE SYSTEM, NORTH ZONE NAD83(2011) AND ARE FOR PROJECT USE ONLY.

MATCHLINE 226+00
 SEE SHEET 5

SE 1/4 SECTION 16 U.S. RESERVE T.2
 SW 1/4 SECTION 15 U.S. RESERVE T.2

NE 1/4 SECTION 21 U.S. RESERVE T.2
 NW 1/4 SECTION 22 U.S. RESERVE T.2

MN1030

INTERSECTION OF SR-2 AND MCCORD RD
 3/4" IRON PIN IN MON BOX FOUND

MN1029

SW 1/4 OF SECTION 15
 3/4" IRON PIN IN MON BOX FOUND

MN223

MN229

MN231

MN235

MN240

MN245

MN251



PID NO.
95875

R/W DESIGNER: MJP
 R/W REVIEWER: JRM

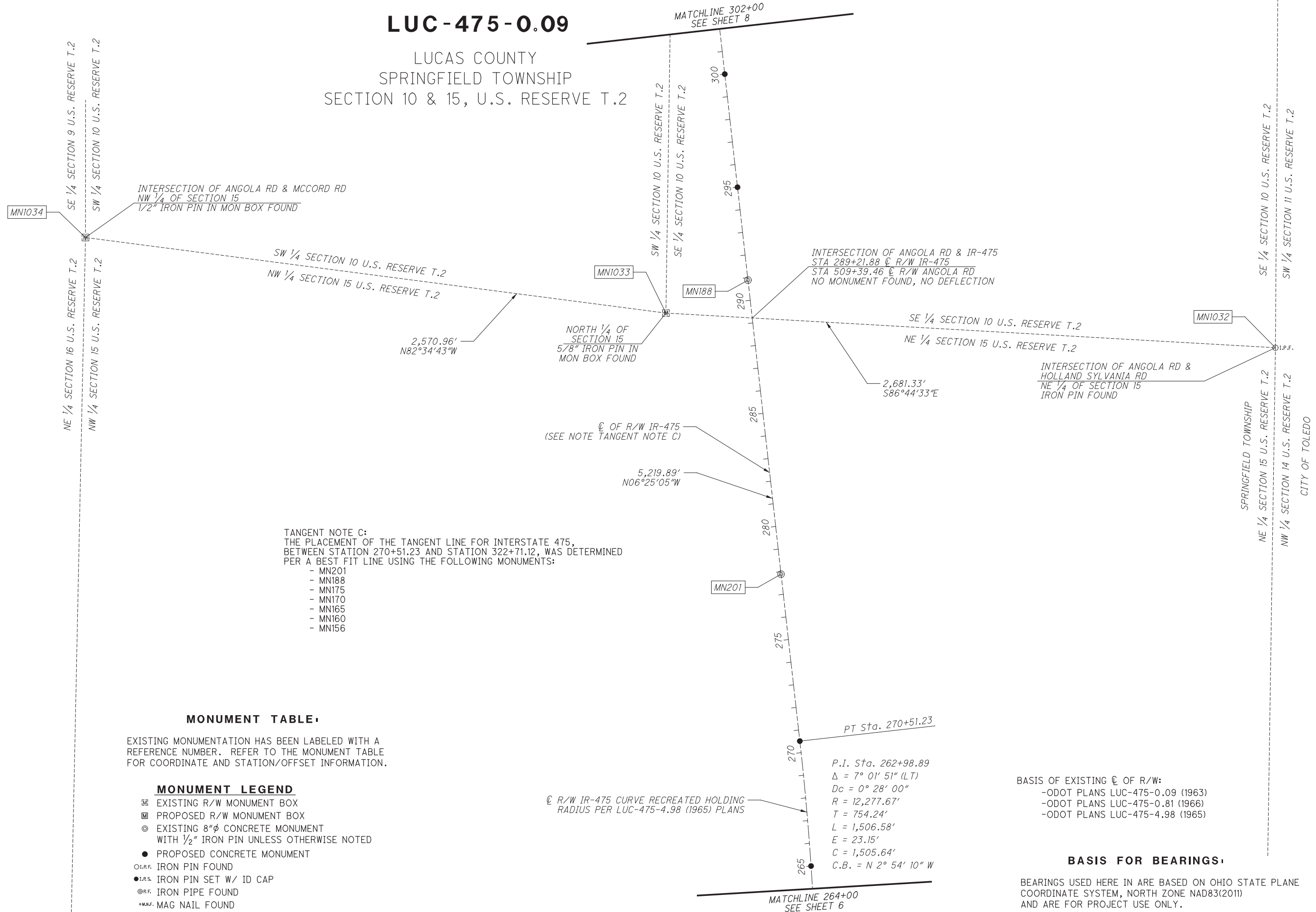
CENTERLINE PLAT

LUC-475-0.09

Z:\Nc\N\Toledo\Survey\16076-0056-0001_VAR-D02-S&RW_19021\ND2_S&R - LUC-475_Centerline\survey\Sheets\95875-RC007.dgn Sheet 7/8/2021 9:23:05 AM jimhelcic

LUC-475-0.09

LUCAS COUNTY
SPRINGFIELD TOWNSHIP
SECTION 10 & 15, U.S. RESERVE T.2



TANGENT NOTE C:
THE PLACEMENT OF THE TANGENT LINE FOR INTERSTATE 475,
BETWEEN STATION 270+51.23 AND STATION 322+71.12, WAS DETERMINED
PER A BEST FIT LINE USING THE FOLLOWING MONUMENTS:

- MN201
- MN188
- MN175
- MN170
- MN165
- MN160
- MN156

MONUMENT TABLE

EXISTING MONUMENTATION HAS BEEN LABELED WITH A REFERENCE NUMBER. REFER TO THE MONUMENT TABLE FOR COORDINATE AND STATION/OFFSET INFORMATION.

MONUMENT LEGEND

- ▣ EXISTING R/W MONUMENT BOX
- ▣ PROPOSED R/W MONUMENT BOX
- ⊙ EXISTING 8" ϕ CONCRETE MONUMENT WITH 1/2" IRON PIN UNLESS OTHERWISE NOTED
- PROPOSED CONCRETE MONUMENT
- ⊙ I.P.F. IRON PIN FOUND
- I.P.S. IRON PIN SET W/ ID CAP
- ⊙ I.P.F. IRON PIPE FOUND
- ⊙ M.N.F. MAG NAIL FOUND

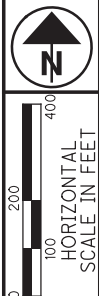
☉ R/W IR-475 CURVE RECREATED HOLDING RADIUS PER LUC-475-4.98 (1965) PLANS

P.I. Sta. 262+98.89
 $\Delta = 7^\circ 01' 51''$ (LT)
 $D_c = 0^\circ 28' 00''$
 $R = 12,277.67'$
 $T = 754.24'$
 $L = 1,506.58'$
 $E = 23.15'$
 $C = 1,505.64'$
 $C.B. = N 2^\circ 54' 10'' W$

BASIS OF EXISTING ϕ OF R/W:
 -ODOT PLANS LUC-475-0.09 (1963)
 -ODOT PLANS LUC-475-0.81 (1966)
 -ODOT PLANS LUC-475-4.98 (1965)

BASIS FOR BEARINGS:

BEARINGS USED HERE IN ARE BASED ON OHIO STATE PLANE COORDINATE SYSTEM, NORTH ZONE NAD83(2011) AND ARE FOR PROJECT USE ONLY.



PID NO. **95875**
 R/W DESIGNER: MJP
 R/W REVIEWER: JRM

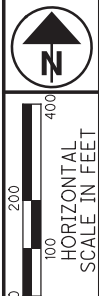
CENTERLINE PLAT

LUC-475-0.09

Z:\Nci\Toledo\Survey\16076-0056_0DOT_VAR-D02-S&RW_1902\ND2_S&R - LUC-475 Centerline\survey\Sheets\95875_Rc008.dgn Sheet 7/7/2021 8:40:52 PM jimhelcic

LUC-475-0.09

LUCAS COUNTY
CITY OF TOLEDO
SPRINGFIELD TOWNSHIP
SECTION 10, U.S. RESERVE T.2



R/W DESIGNER: MJP
R/W REVIEWER: JRM
PID NO.: 95875

CENTERLINE PLAT

LUC-475-0.09

TANGENT NOTE D:
THE PLACEMENT OF THE TANGENT LINE FOR INTERSTATE 475,
BETWEEN STATION 335+36.59 AND STATION 402+39.26, WAS DETERMINED
PER A BEST FIT LINE USING THE FOLLOWING MONUMENTS:

- MN143
- MN140
- MN134
- MN130
- MN125
- MN120
- MN115
- MN110
- MN105
- MN100
- MN095
- MN090

P.I. Sta. 329+04.42
 $\Delta = 5^\circ 54' 20''$ (RT)
 $Dc = 0^\circ 28' 00''$
 $R = 12,277.67'$
 $T = 633.29'$
 $L = 1,265.46'$
 $E = 16.32'$
 $C = 1,264.90'$
 $C.B. = N 3^\circ 27' 56'' W$

TANGENT NOTE C:
THE PLACEMENT OF THE TANGENT LINE FOR INTERSTATE 475,
BETWEEN STATION 270+51.23 AND STATION 322+71.12, WAS DETERMINED
PER A BEST FIT LINE USING THE FOLLOWING MONUMENTS:

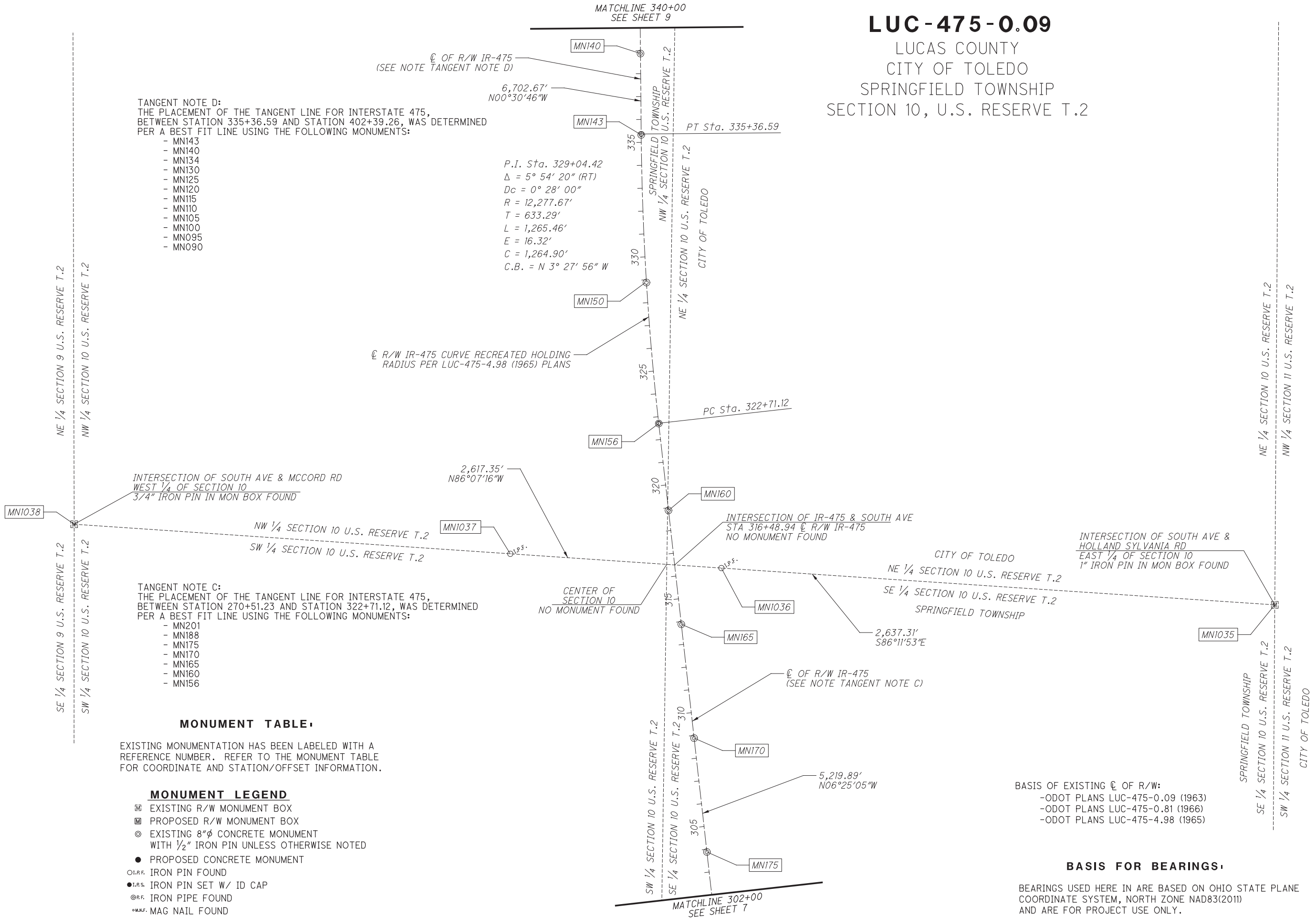
- MN201
- MN188
- MN175
- MN170
- MN165
- MN160
- MN156

MONUMENT TABLE

EXISTING MONUMENTATION HAS BEEN LABELED WITH A
REFERENCE NUMBER. REFER TO THE MONUMENT TABLE
FOR COORDINATE AND STATION/OFFSET INFORMATION.

MONUMENT LEGEND

- ☐ EXISTING R/W MONUMENT BOX
- ▣ PROPOSED R/W MONUMENT BOX
- ⊙ EXISTING 8" ϕ CONCRETE MONUMENT
WITH 1/2" IRON PIN UNLESS OTHERWISE NOTED
- PROPOSED CONCRETE MONUMENT
- ⊙ I.P.F. IRON PIN FOUND
- I.P.S. IRON PIN SET W/ ID CAP
- ⊙ I.P.F. IRON PIPE FOUND
- ⊙ M.N.F. MAG NAIL FOUND



BASIS OF EXISTING ϕ OF R/W:
 -ODOT PLANS LUC-475-0.09 (1963)
 -ODOT PLANS LUC-475-0.81 (1966)
 -ODOT PLANS LUC-475-4.98 (1965)

BASIS FOR BEARINGS:

BEARINGS USED HERE IN ARE BASED ON OHIO STATE PLANE
COORDINATE SYSTEM, NORTH ZONE NAD83(2011)
AND ARE FOR PROJECT USE ONLY.

Z:\NCT\Toledo\Survey\16076-0056_0DOT_VAR-D02-S&RW_19021\ND2_S&R - LUC-475 Centerline\survey\Sheets\95875-RC009.dgn Sheet 7/7/2021 8:47:00 PM jmhelic



PID NO.
95875

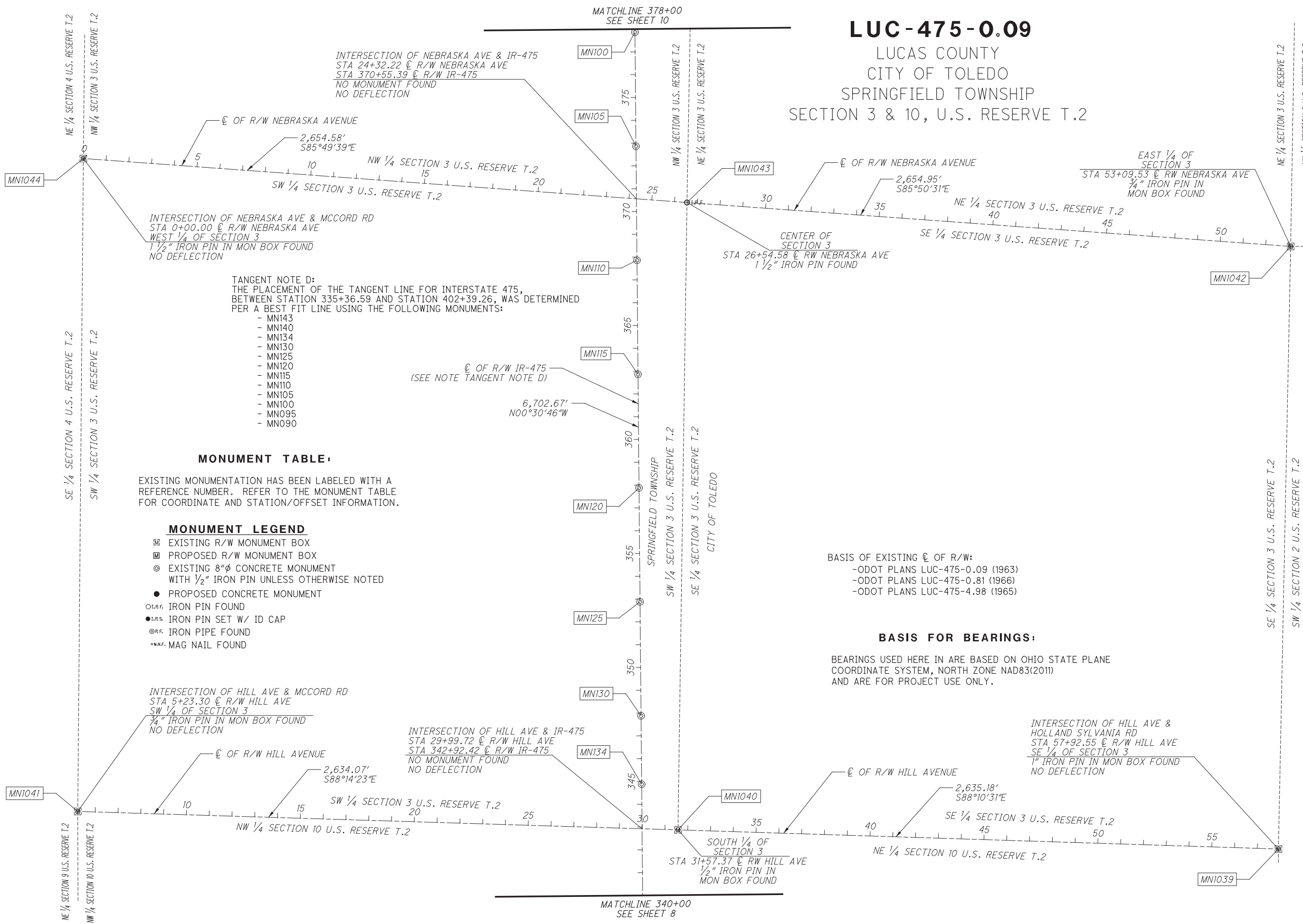
R/W DESIGNER
MJP
R/W REVIEWER
JRM

CENTERLINE PLAT

LUC-475-0.09

9
13

LUC-475-0.09
LUCAS COUNTY
CITY OF TOLEDO
SPRINGFIELD TOWNSHIP
SECTION 3 & 10, U.S. RESERVE T.2



INTERSECTION OF NEBRASKA AVE & IR-475
STA 24+32.22 @ R/W NEBRASKA AVE
STA 370+55.39 @ R/W IR-475
NO MONUMENT FOUND
NO DEFLECTION

INTERSECTION OF NEBRASKA AVE & MCCORD RD
STA 0+00.00 @ R/W NEBRASKA AVE
WEST 1/4 OF SECTION 3
1 1/2" IRON PIN IN MON BOX FOUND
NO DEFLECTION

TANGENT NOTE D:
THE PLACEMENT OF THE TANGENT LINE FOR INTERSTATE 475,
BETWEEN STATION 335+36.59 AND STATION 402+39.26, WAS DETERMINED
PER A BEST FIT LINE USING THE FOLLOWING MONUMENTS:

- MN143
- MN140
- MN134
- MN130
- MN125
- MN120
- MN115
- MN110
- MN105
- MN100
- MN095
- MN090

MONUMENT TABLE

EXISTING MONUMENTATION HAS BEEN LABELED WITH A
REFERENCE NUMBER. REFER TO THE MONUMENT TABLE
FOR COORDINATE AND STATION/OFFSET INFORMATION.

MONUMENT LEGEND

- ☐ EXISTING R/W MONUMENT BOX
- ▣ PROPOSED R/W MONUMENT BOX
- ⊙ EXISTING 8"φ CONCRETE MONUMENT WITH 1/2" IRON PIN UNLESS OTHERWISE NOTED
- PROPOSED CONCRETE MONUMENT
- I.R.F. IRON PIN FOUND
- I.R.S. IRON PIN SET W/ ID CAP
- ⊙ R.F. IRON PIPE FOUND
- ⊙ M.N.F. MAG NAIL FOUND

BASIS OF EXISTING @ OF R/W:
-ODOT PLANS LUC-475-0.09 (1963)
-ODOT PLANS LUC-475-0.81 (1966)
-ODOT PLANS LUC-475-4.98 (1965)

BASIS FOR BEARINGS:

BEARINGS USED HERE IN ARE BASED ON OHIO STATE PLANE
COORDINATE SYSTEM, NORTH ZONE NAD83(2011)
AND ARE FOR PROJECT USE ONLY.

INTERSECTION OF HILL AVE & MCCORD RD
STA 5+23.30 @ R/W HILL AVE
SW 1/4 OF SECTION 3
3/4" IRON PIN IN MON BOX FOUND
NO DEFLECTION

INTERSECTION OF HILL AVE & IR-475
STA 29+99.72 @ R/W HILL AVE
STA 342+92.42 @ R/W IR-475
NO MONUMENT FOUND
NO DEFLECTION

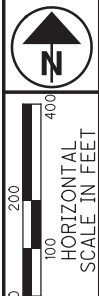
INTERSECTION OF HILL AVE &
HOLLAND SYLVANIA RD
STA 57+92.55 @ R/W HILL AVE
SE 1/4 OF SECTION 3
1" IRON PIN IN MON BOX FOUND
NO DEFLECTION

SOUTH 1/4 OF SECTION 3
STA 31+57.37 @ RW HILL AVE
1/2" IRON PIN IN MON BOX FOUND

Z:\Nc\N\Toledo\Survey\16076-0056_0DOT_VAR-D02-S&RW_19021\ND2_S&R - LUC-475 Centerline\survey\95875-RC010.dgn Sheet 7/7/2021 9:26:35 PM jmlhelcic

LUC-475-0.09

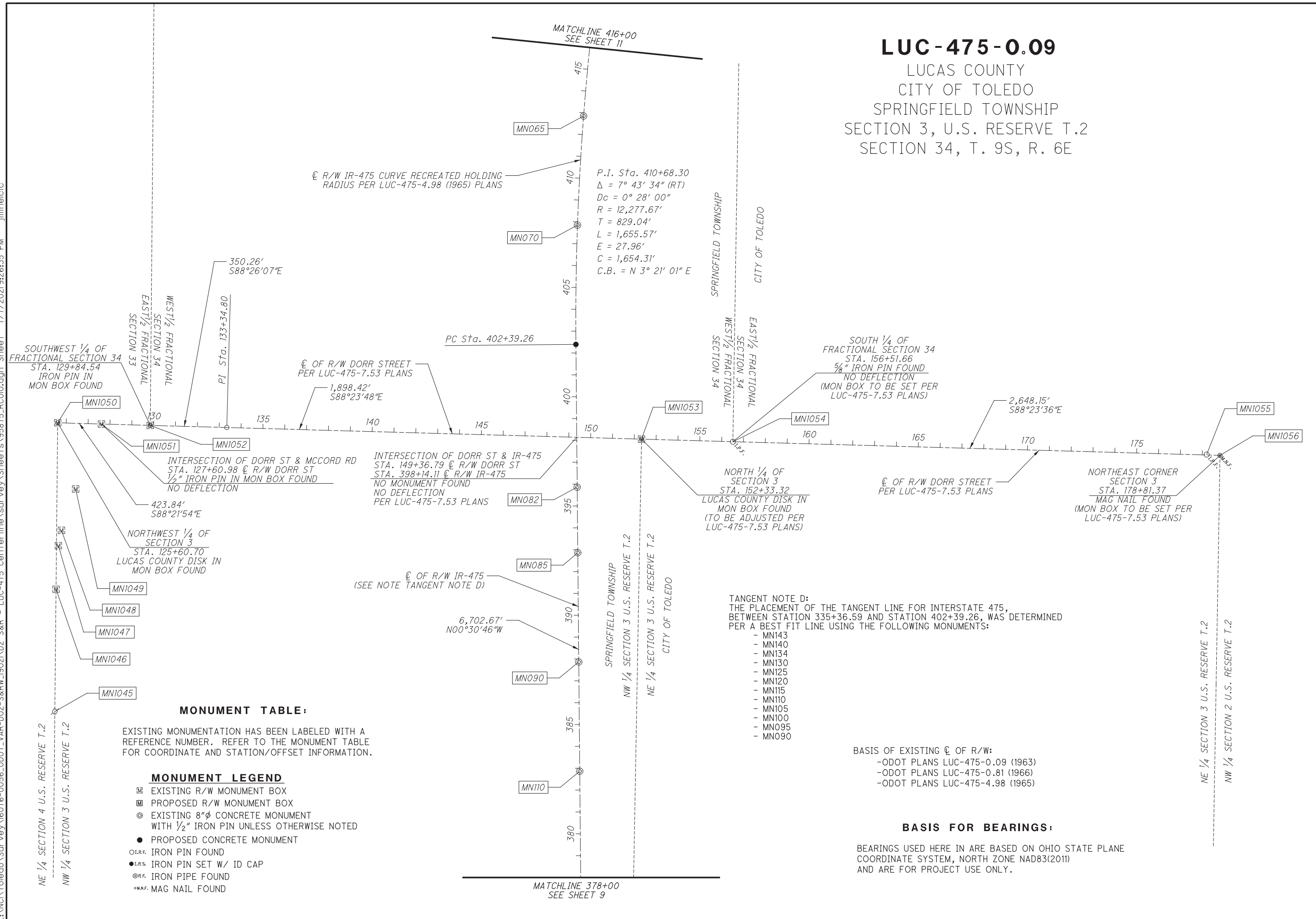
LUCAS COUNTY
CITY OF TOLEDO
SPRINGFIELD TOWNSHIP
SECTION 3, U.S. RESERVE T.2
SECTION 34, T. 9S, R. 6E



PID NO. **95875**
R/W DESIGNER: MJP
MJP
R/W REVIEWER: JRM

CENTERLINE PLAT

LUC-475-0.09



P.I. Sta. 410+68.30
 $\Delta = 7^\circ 43' 34''$ (RT)
 $Dc = 0^\circ 28' 00''$
 $R = 12,277.67'$
 $T = 829.04'$
 $L = 1,655.57'$
 $E = 27.96'$
 $C = 1,654.31'$
 $C.B. = N 3^\circ 21' 01'' E$

TANGENT NOTE D:
 THE PLACEMENT OF THE TANGENT LINE FOR INTERSTATE 475,
 BETWEEN STATION 335+36.59 AND STATION 402+39.26, WAS DETERMINED
 PER A BEST FIT LINE USING THE FOLLOWING MONUMENTS:

- MN143
- MN140
- MN134
- MN130
- MN125
- MN120
- MN115
- MN110
- MN105
- MN100
- MN095
- MN090

BASIS OF EXISTING C OF R/W:
 -ODOT PLANS LUC-475-0.09 (1963)
 -ODOT PLANS LUC-475-0.81 (1966)
 -ODOT PLANS LUC-475-4.98 (1965)

BASIS FOR BEARINGS:

BEARINGS USED HERE IN ARE BASED ON OHIO STATE PLANE
 COORDINATE SYSTEM, NORTH ZONE NAD83(2011)
 AND ARE FOR PROJECT USE ONLY.

MONUMENT TABLE:

EXISTING MONUMENTATION HAS BEEN LABELED WITH A
 REFERENCE NUMBER. REFER TO THE MONUMENT TABLE
 FOR COORDINATE AND STATION/OFFSET INFORMATION.

MONUMENT LEGEND

- EXISTING R/W MONUMENT BOX
- PROPOSED R/W MONUMENT BOX
- EXISTING 8" ϕ CONCRETE MONUMENT WITH 1/2" IRON PIN UNLESS OTHERWISE NOTED
- PROPOSED CONCRETE MONUMENT
- I.R.F. IRON PIN FOUND
- I.P.S. IRON PIN SET W/ ID CAP
- @R.F. IRON PIPE FOUND
- @M.N.F. MAG NAIL FOUND

MATCHLINE 378+00
SEE SHEET 9

MATCHLINE 416+00
SEE SHEET 11

MONUMENT TABLE:

EXISTING MONUMENTATION HAS BEEN LABELED WITH A REFERENCE NUMBER. REFER TO THE MONUMENT TABLE FOR COORDINATE AND STATION/OFFSET INFORMATION.

MONUMENT LEGEND

- ▣ EXISTING R/W MONUMENT BOX
- ▤ PROPOSED R/W MONUMENT BOX
- ⊙ EXISTING 8"φ CONCRETE MONUMENT WITH 1/2" IRON PIN UNLESS OTHERWISE NOTED
- PROPOSED CONCRETE MONUMENT
- I.P.F. IRON PIN FOUND
- I.P.S. IRON PIN SET W/ ID CAP
- ⊙ I.P.F. IRON PIPE FOUND
- M.N.F. MAG NAIL FOUND

LUC-475-0.09

LUCAS COUNTY
CITY OF TOLEDO
SPRINGFIELD TOWNSHIP
SECTION 34, T. 9S, R. 6E
SYLVANIA TOWNSHIP
SECTION 27, T. 9S, R. 6E



PID NO.
95875

R/W DESIGNER
MJP
R/W REVIEWER
JRM

CENTERLINE PLAT

LUC-475-0.09

11
13

MATCHLINE 454+00
SEE SHEET 12

P.I. Sta. 451+53.93
Δ = 10° 17' 20" (LT)
Dc = 0° 28' 00"
R = 12,277.67'
T = 1,105.34'
L = 2,204.74'
E = 49.66'
C = 2,201.78'
C.B. = N 2° 04' 08" E

℄ R/W IR-475 CURVE RECREATED HOLDING RADIUS PER LUC-475-4.98 (1965) PLANS

℄ OF R/W IR-475
(SEE NOTE TANGENT NOTE E)

2,153.76'
N07°12'48"E

TANGENT NOTE E:
THE PLACEMENT OF THE TANGENT LINE FOR INTERSTATE 475, BETWEEN STATION 335+36.59 AND STATION 402+39.26, WAS DETERMINED PER A BEST FIT LINE USING THE FOLLOWING MONUMENTS:
- MN059
- MN055
- MN050
- MN045
- MN040
- MN037

INTERSECTION OF BANCROFT ST & IR-475
STA 49+99.90 ℄ R/W BANCROFT ST
STA 423+97.26 ℄ R/W IR-475
NO MONUMENT FOUND, NO DEFLECTION

INTERSECTION OF BANCROFT ST & HOLLAND SYLVANIA RD
STA 82+87.42 ℄ R/W BANCROFT ST
NE 1/4 OF SECTION 34 T9 S R6 E
BRASS DISK IN MON BOX FOUND

INTERSECTION OF BANCROFT ST & MCCORD RD
STA 29+05.78 ℄ R/W BANCROFT ST
NW 1/4 OF SECTION 34 T9 S R6 E
IRON PIN IN MON BOX FOUND

NORTH 1/4 OF SECTION 34 T9 S R6 E
STA 56+01.58 ℄ R/W BANCROFT ST
P.K. NAIL FOUND

℄ OF R/W BANCROFT STREET
PER LUC-475-7.53 PLANS

2,685.85'
N86°19'25"E

BASIS OF EXISTING ℄ OF R/W:
- ODOT PLANS LUC-475-0.09 (1963)
- ODOT PLANS LUC-475-0.81 (1966)
- ODOT PLANS LUC-475-4.98 (1965)

℄ R/W IR-475 CURVE RECREATED HOLDING RADIUS PER LUC-475-4.98 (1965) PLANS

P.I. Sta. 410+68.30
Δ = 7° 43' 34" (RT)
Dc = 0° 28' 00"
R = 12,277.67'
T = 829.04'
L = 1,655.57'
E = 27.96'
C = 1,654.31'
C.B. = N 3° 21' 01" E

BASIS FOR BEARINGS:

BEARINGS USED HERE IN ARE BASED ON OHIO STATE PLANE COORDINATE SYSTEM, NORTH ZONE NAD83(2011) AND ARE FOR PROJECT USE ONLY.

MATCHLINE 416+00
SEE SHEET 10

Z:\N\Toledo\Survey\16076-0056_0DOT_VAR-D02-S&RW_1902\IND2_S&R - LUC-475 Centerline\survey\Sheets\95875_R001.dgn Sheet 7/7/2021 9:36:27 PM jmhelcic

MONUMENT TABLE:

EXISTING MONUMENTATION HAS BEEN LABELED WITH A REFERENCE NUMBER. REFER TO THE MONUMENT TABLE FOR COORDINATE AND STATION/OFFSET INFORMATION.

MONUMENT LEGEND

- ▣ EXISTING R/W MONUMENT BOX
- ▣ PROPOSED R/W MONUMENT BOX
- ⊙ EXISTING 8"φ CONCRETE MONUMENT WITH 1/2" IRON PIN UNLESS OTHERWISE NOTED
- PROPOSED CONCRETE MONUMENT
- I.R.F. IRON PIN FOUND
- I.R.S. IRON PIN SET W/ ID CAP
- ⊙ I.R.P. IRON PIPE FOUND
- M.N.F. MAG NAIL FOUND

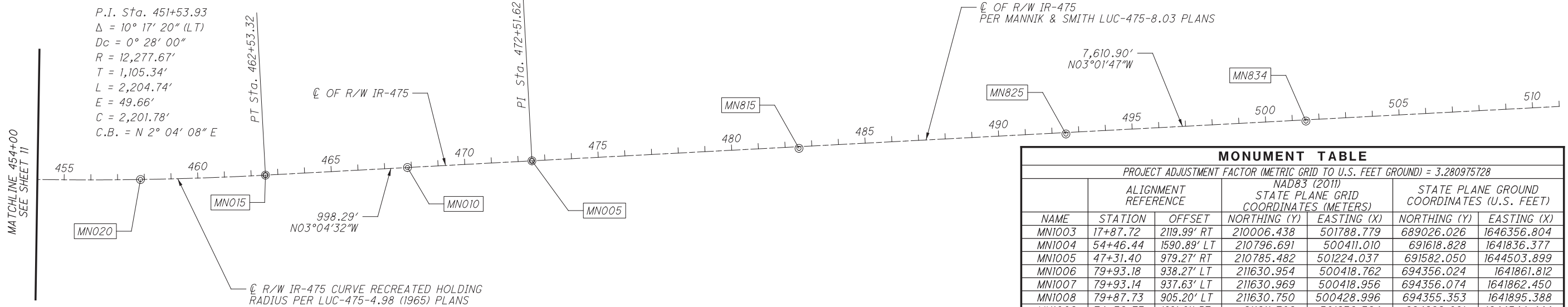
LUC-475-0.09

LUCAS COUNTY
SYLVANIA TOWNSHIP
SECTION 22 & 27, T. 9S, R. 6E

BASIS FOR BEARINGS:

BEARINGS USED HERE IN ARE BASED ON OHIO STATE PLANE COORDINATE SYSTEM, NORTH ZONE NAD83(2011) AND ARE FOR PROJECT USE ONLY.

- BASIS OF EXISTING C OF R/W:
- ODOT PLANS LUC-475-0.09 (1963)
 - ODOT PLANS LUC-475-0.81 (1966)
 - ODOT PLANS LUC-475-4.98 (1965)



MONUMENT TABLE						
PROJECT ADJUSTMENT FACTOR (METRIC GRID TO U.S. FEET GROUND) = 3.280975728						
NAME	ALIGNMENT REFERENCE		NAD83 (2011) STATE PLANE GRID COORDINATES (METERS)		STATE PLANE GROUND COORDINATES (U.S. FEET)	
	STATION	OFFSET	NORTHING (Y)	EASTING (X)	NORTHING (Y)	EASTING (X)
MN1003	17+87.72	2119.99' RT	210006.438	501788.779	689026.026	1646356.804
MN1004	54+46.44	1590.89' LT	210796.691	500411.010	691618.828	1641836.377
MN1005	47+31.40	979.27' RT	210785.482	501224.037	691582.050	1644503.899
MN1006	79+93.18	938.27' LT	211630.954	500418.762	694356.024	1641861.812
MN1007	79+93.14	937.63' LT	211630.969	500418.956	694356.074	1641862.450
MN1008	79+87.73	905.20' LT	211630.750	500428.996	694355.353	1641895.388
MN1009	74+39.73	1691.61' RT	211611.709	501236.394	694292.881	1644544.444
MN1010	89+06.95	3221.01' RT	212030.865	501647.047	695668.121	1645891.784
MN1011	99+39.24	744.45' LT	212266.714	500429.448	696441.936	1641896.871
MN1012	131+64.59	1931.82' RT	213242.658	501255.516	699643.984	1644607.182
MN1013	135+63.37	728.94' LT	213372.863	500445.893	700071.185	1641950.828
MN1014	136+84.31	1381.21' LT	213411.847	500247.497	700199.091	1641299.895
MN1015	156+83.82	720.72' LT	214019.088	500455.308	702191.433	1641981.717
MN1016	165+48.21	371.00' LT	214281.387	500564.709	703052.031	1642340.659
MN1017	166+49.38	254.92' LT	214311.843	500600.417	703151.954	1642457.816
MN1018	166+94.52	107.77' LT	214325.122	500645.411	703195.524	1642605.441
MN1019	167+42.00	205.71' RT	214338.569	500741.106	703239.644	1642919.415
MN1020	185+26.83	3361.63' LT	214894.158	499659.702	705062.515	1639371.354
MN1021	185+21.02	728.07' LT	214883.805	500462.312	705028.548	1642004.700
MN1022	183+49.79	612.09' RT	214827.251	500870.196	704842.997	1643342.955
MN1023	183+93.74	642.47' RT	214840.548	500879.599	704886.623	1643373.807
MN1024	195+66.92	653.64' RT	215198.061	500886.824	706059.615	1643397.513
MN1025	195+99.34	623.90' RT	215208.039	500877.867	706092.352	1643368.125
MN1026	210+16.05	687.85' LT	215644.083	500482.701	707523.001	1642071.593
MN1027	212+06.19	3338.37' LT	215710.668	499675.521	707741.466	1639423.256
MN1028	234+93.03	1967.16' RT	216390.341	501299.940	709971.457	1644752.936
MN1029	238+77.95	3308.14' LT	216524.843	499693.441	710412.755	1639482.052
MN1030	244+86.43	3302.10' LT	216710.270	499697.264	711021.136	1639494.593
MN1031	260+52.85	1978.32' RT	217195.407	501308.227	712612.860	1644780.126
MN1032	285+35.03	2268.96' RT	218007.047	501320.515	715275.829	1644820.443
MN1033	289+85.69	374.23' LT	218053.486	500504.601	715428.195	1642143.447
MN1034	296+00.67	2870.55' LT	218154.700	499727.569	715760.277	1639594.024
MN1035	311+82.93	2584.77' RT	218819.794	501325.953	717942.434	1644838.282
MN1036	316+12.64	201.35' RT	218868.740	500589.428	718103.025	1642421.762
MN1037	317+77.50	707.70' LT	218887.701	500308.480	718165.235	1641499.978
MN1038	321+18.73	2585.89' LT	218927.060	499727.994	718294.371	1639595.420
MN1039	341+78.70	2790.52' RT	219649.451	501331.434	720664.517	1644856.268
MN1040	342+86.17	157.53' RT	219675.026	500528.672	720748.427	1642222.423
MN1041	343+90.63	2474.47' LT	219699.685	499726.219	720829.334	1639589.594
MN1042	368+21.04	2867.75' RT	220454.982	501347.768	723307.447	1644909.858
MN1043	370+37.23	221.62' RT	220513.654	500540.703	723499.948	1642261.898
MN1044	372+54.06	2424.09' LT	220572.524	499733.766	723693.097	1639614.356

CENTERLINE OF R/W IR-475 INFORMATION & MONUMENT TABLE							
PROJECT ADJUSTMENT FACTOR (METRIC GRID TO U.S. FEET GROUND) = 3.280975728							
ALIGNMENT REFERENCE	NAD83 (2011) STATE PLANE GRID COORDINATES (METERS)		STATE PLANE GROUND COORDINATES (U.S. FEET)		PROPOSED MONUMENTATION	REMARKS AND COMMENTS	
	STATION	OFFSET	NORTHING (Y)	EASTING (X)			NORTHING (Y)
8+00.01	℄	209550.739	501240.626	687530.890	1644558.328	CMON	PT
15+00.00	℄	209757.052	501186.282	688207.795	1644380.026	CMON	
78+23.51	℄	211624.120	500709.644	694333.602	1642816.188	CMON	INTERSECTION OF IR-475 & TOWNSHIP LINE
135+00.00	℄	213351.176	500667.847	700000.030	1642679.054	CMON	
140+00.00	℄	213503.561	500669.476	700500.001	1642684.399	CMON	
145+00.00	℄	213655.946	500671.105	700999.972	1642689.744	CMON	
150+00.00	℄	213778.266	500673.745	701401.300	1642698.404	CMON	
155+00.00	℄	213960.716	500674.364	701999.915	1642700.435	CMON	
160+00.00	℄	214113.101	500675.993	702499.887	1642705.780	CMON	
165+00.00	℄	214265.486	500677.622	702999.858	1642711.125	CMON	
170+00.00	℄	214417.871	500679.251	703499.829	1642716.471	CMON	
175+00.00	℄	214570.254	500680.879	703999.795	1642721.813	CMON	
180+00.00	℄	214722.641	500682.509	704499.772	1642727.161	CMON	
190+00.00	℄	215027.411	500685.768	705499.715	1642737.852	CMON	
210+00.00	℄	215636.951	500692.285	707499.601	1642759.233	CMON	
260+00.00	℄	217160.796	500706.003	712499.301	1642804.242	CMON	
265+00.00	℄	217313.013	500698.880	712998.720	1642780.873	CMON	
270+51.23	℄	217480.334	500683.853	713547.696	1642731.570	CMON	PT
295+00.00	℄	218222.010	500600.423	715981.117	1642457.836	CMON	
300+00.00	℄	218373.448	500583.387	716477.983	1642401.944	CMON	
402+39.26	℄	221488.949	500464.426	726699.865	1642011.636	CMON	PC

Z:\NCT\Toledo\Survey\6076-0056_0B0T_VAR-D02-S&RW_19021ND2_S&R - LUC-475 Centerline\survey\Sheets\95875_R0012.dgn Sheet 7/7/2021 10:08:22 PM jmhelicic

CENTERLINE PLAT

LUC-475-0.09

PID NO. 95875

R/W DESIGNER MJP R/W REVIEWER JRM

12
13

CENTERLINE OF R/ W IR-475 INFORMATION & MONUMENT TABLE

PROJECT ADJUSTMENT FACTOR (METRIC GRID TO U.S. FEET GROUND) = 3.280975728

NAME	STATION	ALIGNMENT REFERENCE	NAD83 (2011) STATE PLANE GRID COORDINATES (METERS)		STATE PLANE GROUND COORDINATES (U.S. FEET)		EXISTING MONUMENTATION	REMARKS AND COMMENTS
			NORTHING (Y)	EASTING (X)	NORTHING (Y)	EASTING (X)		
MN460	18+96.20	0.21' RT	209873.841	501155.584	688590.978	1644279.307	CMON	
MN454	24+95.09	0.02' LT	210050.336	501109.021	689170.054	1644126.535	CMON	
MN450	28+96.25	0.01' LT	210168.572	501077.881	689557.983	1644024.365	CMON	
MN448	31+02.16	0.04' RT	210229.266	501061.909	689757.119	1643971.961	CMON	
MN445	33+95.73	0.01' LT	210315.786	501039.103	690040.989	1643897.136	CMON	
MN440	38+95.70	0.00' RT	210463.145	501000.293	690524.470	1643769.801	CMON	
MN435	43+94.09	0.17' LT	210610.025	500961.549	691006.380	1643642.683	CMON	
MN425	53+94.02	0.03' RT	210904.754	500883.978	691973.379	1643388.174	CMON	
MN420	58+93.99	0.06' RT	211052.115	500845.172	692456.867	1643260.853	CMON	
MN415	63+94.03	0.08' LT	211199.481	500806.310	692940.371	1643133.347	CMON	
MN412	67+32.67	0.01' RT	211299.299	500780.046	693267.871	1643047.176	CMON	
MN405	73+94.06	0.22' RT	211495.519	500733.978	693911.664	1642896.028	CMON	
MN400	78+94.10	0.41' RT	211645.361	500706.210	694403.292	1642804.922	CMON	
MN395	83+94.16	0.45' RT	211796.206	500684.517	694898.211	1642733.748	CMON	
MN390	88+94.28	0.51' RT	211947.826	500668.991	695395.673	1642682.807	CMON	
MN385	93+94.34	0.44' RT	212099.934	500659.616	695894.734	1642652.049	CMON	
MN379	100+28.09	0.17' RT	212293.042	500656.586	696528.318	1642642.107	CMON	
MN375	103+94.62	0.04' RT	212404.748	500657.742	696894.823	1642645.899	CMON	
MN370	108+94.69	0.05' RT	212557.154	500659.372	697394.863	1642651.247	CMON	
MN365	113+95.13	0.03' LT	212709.674	500660.980	697895.277	1642656.523	CMON	
MN360	118+94.88	0.01' LT	212861.985	500662.614	698395.006	1642661.884	CMON	
MN355	123+94.97	0.02' LT	213014.397	500664.240	698895.066	1642667.219	CMON	
MN350	128+94.97	0.01' LT	213166.782	500665.872	699395.038	1642672.574	CMON	
MN285	193+92.79	0.08' LT	215147.120	500687.025	705892.479	1642741.976	CMON	
MN280	198+92.81	0.04' LT	215299.513	500688.664	706392.476	1642747.354	CMON	
MN275	203+92.88	0.03' LT	215451.920	500690.297	706892.52	1642752.712	CMON	
MN265	213+92.94	0.01' LT	215756.707	500693.562	707892.519	1642763.424	CMON	
MN260	218+93.09	0.08' RT	215909.138	500695.219	708392.641	1642768.861	CMON	
MN255	223+93.24	0.06' RT	216061.569	500696.843	708892.764	1642774.189	CMON	
MN251	227+93.26	0.08' RT	216183.483	500698.152	709292.76	1642778.484	CMON	
MN245	233+89.91	0.05' RT	216365.323	500700.087	709899.372	1642784.831	CMON	
MN240	238+89.97	0.02' LT	216517.727	500701.694	710389.407	1642790.104	CMON	
MN235	243+90.00	0.04' LT	216670.120	500703.320	710889.404	1642795.439	CMON	
MN231	247+90.15	0.03' LT	216792.075	500704.625	711289.536	1642799.722	CMON	
MN229	249+90.19	0.03' LT	216853.040	500705.276	711489.561	1642801.859	CMON	
MN223	255+43.77	0.02' RT	217021.755	500707.098	712043.111	1642807.834	CMON	
MN201	277+89.28	0.05' LT	217703.871	500658.693	714281.116	1642649.02	CMON	
MN188	290+89.28	0.07' RT	218097.614	500614.437	715572.977	1642503.818	CMON	
MN175	303+88.24	0.06' RT	218491.040	500570.178	716863.799	1642358.603	CMON	MANNIK SMITH GROUP POINT NUMBER 40, MONUMENT NOW GONE PER ODOT
MN170	308+88.31	0.05' LT	218642.496	500553.106	717360.721	1642302.592	CMON	MANNIK SMITH GROUP POINT NUMBER 1
MN165	313+88.36	0.05' LT	218793.950	500536.071	717857.64	1642246.699	CMON	MANNIK SMITH GROUP POINT NUMBER 2
MN160	318+88.44	0.01' LT	218945.412	500519.043	718354.583	1642190.833	CMON	MANNIK SMITH GROUP POINT NUMBER 3
MN156	322+70.15	0.03' RT	219061.025	500506.053	718733.906	1642148.211	CMON	MANNIK SMITH GROUP POINT NUMBER 5
MN150	328+87.93	0.02' RT	219248.586	500489.702	719349.289	1642094.566	CMON	MANNIK SMITH GROUP POINT NUMBER 6
MN143	335+32.97	0.07' LT	219445.039	500482.693	719993.847	1642071.568	CMON	MANNIK SMITH GROUP POINT NUMBER 7
MN140	338+87.82	0.06' RT	219553.189	500481.766	720348.685	1642068.525	CMON	MANNIK SMITH GROUP POINT NUMBER 8
MN134	344+87.86	0.01' RT	219736.065	500480.113	720948.697	1642063.104	CMON	MANNIK SMITH GROUP POINT NUMBER 10
MN130	347+87.89	0.04' RT	219827.507	500479.305	721248.716	1642060.452	CMON	MANNIK SMITH GROUP POINT NUMBER 11
MN125	352+87.89	0.01' RT	219979.895	500477.934	721748.697	1642055.953	CMON	MANNIK SMITH GROUP POINT NUMBER 12
MN120	357+87.88	0.04' LT	220132.279	500476.555	722248.664	1642051.429	CMON	MANNIK SMITH GROUP POINT NUMBER 14
MN115	362+85.97	0.01' LT	220284.086	500475.205	722746.739	1642047.001	CMON	MANNIK SMITH GROUP POINT NUMBER 15
MN110	367+86.07	0.02' LT	220436.502	500473.837	723246.814	1642042.511	CMON	MANNIK SMITH GROUP POINT NUMBER 16
MN105	372+86.12	0.01' RT	220588.906	500472.482	723746.846	1642038.067	CMON	MANNIK SMITH GROUP POINT NUMBER 17
MN100	377+86.21	0.04' RT	220741.319	500471.130	724246.911	1642033.629	CMON	MANNIK SMITH GROUP POINT NUMBER 18
MN095	382+86.21	0.00' RT	220893.708	500469.752	724746.895	1642029.11	CMON	MANNIK SMITH GROUP POINT NUMBER 19
MN090	387+86.21	0.02' LT	221046.095	500468.382	725246.874	1642024.614	CMON	MANNIK SMITH GROUP POINT NUMBER 21
MN085	392+86.19	0.02' LT	221198.477	500467.021	725746.834	1642020.147	CMON	MANNIK SMITH GROUP POINT NUMBER 22
MN082	395+86.14	0.06' LT	221289.895	500466.189	726046.774	1642017.419	CMON	MANNIK SMITH GROUP POINT NUMBER 23
MN070	407+85.13	0.11' LT	221655.297	500466.604	727245.648	1642018.779	CMON	MANNIK SMITH GROUP POINT NUMBER 25, MONUMENT NOW GONE PER ODOT
MN065	412+85.07	0.04' LT	221807.424	500475.134	727744.774	1642046.767	CMON	MANNIK SMITH GROUP POINT NUMBER 26
MN059	418+94.38	0.00' RT	221992.166	500493.877	728350.910	1642108.264	CMON	MANNIK SMITH GROUP POINT NUMBER 27
MN055	422+85.23	0.01' RT	222110.351	500508.836	728738.669	1642157.344	CMON	MANNIK SMITH GROUP POINT NUMBER 28
MN050	427+85.20	0.03' LT	222261.528	500527.960	729234.678	1642220.087	CMON	MANNIK SMITH GROUP POINT NUMBER 29
MN045	432+85.30	0.00' RT	222412.745	500547.106	729730.819	1642282.907	CMON	MANNIK SMITH GROUP POINT NUMBER 30
MN040	437+85.23	0.05' RT	222563.910	500566.254	730226.785	1642345.730	CMON	MANNIK SMITH GROUP POINT NUMBER 31
MN037	440+47.81	0.03' LT	222643.312	500576.279	730487.304	1642378.620	CMON	MANNIK SMITH GROUP POINT NUMBER 32
MN030	447+85.32	0.66' RT	222867.014	500598.016	731221.264	1642449.941	CMON	MANNIK SMITH GROUP SURVEYED LOCATION
MN026	451+45.12	0.51' RT	222976.535	500603.585	731580.599	1642468.212	CMON	MANNIK SMITH GROUP SURVEYED LOCATION
MN020	457+85.52	0.19' RT	223171.697	500605.539	732220.92	1642474.623	CMON	MANNIK SMITH GROUP SURVEYED LOCATION
MN015	462+53.39	0.01' RT	223314.201	500600.545	732688.474	1642458.239	CMON	MANNIK SMITH GROUP SURVEYED LOCATION
MN010	467+85.28	0.01' LT	223476.082	500591.843	733219.599	1642429.685	CMON	MANNIK SMITH GROUP SURVEYED LOCATION
MN005	472+51.62	0.01' RT	223618.011	500584.222	733685.265	1642404.684	CMON	MANNIK SMITH GROUP SURVEYED LOCATION
MN815	482+51.69	6.22' RT	223922.494	500570.002	734684.269	1642358.025	CMON	MANNIK SMITH GROUP SURVEYED LOCATION
MN825	492+51.63	5.38' RT	224226.823	500553.637	735682.764	1642304.333	CMON	MANNIK SMITH GROUP SURVEYED LOCATION
MN834	501+50.75	4.35' RT	224500.463	500538.840	736580.572	1642255.786	CMON	MANNIK SMITH GROUP SURVEYED LOCATION

COORDINATE VALUE NOTE:

THROUGH THE PROCESS OF THE HEREIN CENTERLINE FOR INTERSTATE 475 BEING RESOLVED, SURVEYED LOCATIONS OF THE CENTERLINE MONUMENTS MN175 THROUGH MN005 AND MN815 THROUGH MN834 WERE PROVIDED BY THE MANNIK SMITH GROUP DURING THE SUMMER/FALL OF 2014. THE COORDINATE VALUES PROVIDED ARE LISTED IN THE TABLE TO THE LEFT. THESE LOCATIONS WERE UTILIZED AS PART OF THE PROCESS TO CREATE BEST FIT LINES AS NOTED ON THE PREVIOUS SHEETS AND ARE THEREFORE RELEVANT TO INCLUDE. DURING THE FALL OF 2019, ODOT SURVEYED MANY OF THE LOCATIONS LISTED IN THIS NOTE. A QUESTION WAS RAISED BY ODOT SINCE THE COORDINATE VALUES WERE NOT MATCHING. MANNIK SMITH GROUP INDICATED TO ODOT THAT A CAUSE FOR THE COORDINATE VALUES NOT MATCHING WAS THE RESULT OF A ODOT CORS STATION SHIFTING DURING THE DATA COLLECTION PROCESS. ODOT WAS AWARE OF A SHIFT IN THE CORS STATION. WHILE THE COORDINATE VALUES LISTED FOR CENTERLINE MONUMENTS IN THIS NOTE ARE DIFFERENT THAN CURRENT VALUES PER MANNIK SMITH GROUP PLANS, THE VALUES LISTED IN THE COORDINATE TABLE TO THE LEFT ARE RELEVANT TO HOW THE CENTERLINE FOR INTERSTATE 475 WAS RESOLVED AND USED FOR RIGHT OF WAY PLAN DEVELOPMENT.

LISTED IN THE TABLE BELOW ARE THE REVISED COORDINATE VALUES AS CORRECTED BY MANNIK SMITH GROUP AND AGREED TO BY ODOT. MONUMENTS DISTURBED SHALL BE REPLACED AT THE COORDINATE LOCATIONS AS LISTED BELOW.

CENTERLINE OF R/ W IR-475 REVISED MONUMENT TABLE

PROJECT ADJUSTMENT FACTOR (METRIC GRID TO U.S. FEET GROUND) = 3.280975728

NAME	STATION	ALIGNMENT REFERENCE	NAD83 (2011) STATE PLANE GRID COORDINATES (METERS)		STATE PLANE GROUND COORDINATES (U.S. FEET)		REMARKS AND COMMENTS
			NORTHING (Y)	EASTING (X)	NORTHING (Y)	EASTING (X)	
MN170	308+88.35	0.08' RT	218642.511	500553.146	717360.7731	1642302.7219	MANNIK SMITH GROUP POINT NUMBER 1
MN165	313+88.40	0.09' RT	218793.966	500536.110	717857.6923	1642246.8287	MANNIK SMITH GROUP POINT NUMBER 2
MN160	318+88.47	0.12' RT	218945.428	500519.083	718354.6353	1642190.9633	MANNIK SMITH GROUP POINT NUMBER 3
MN156	322+70.18	0.17' RT	219061.041	500506.092	718733.9577	1642148.3407	MANNIK SMITH GROUP POINT NUMBER 5
MN150	328+87.97	0.16' RT	219248.602	500489.742	719349.3410	1642094.6962	MANNIK SMITH GROUP POINT NUMBER 6
MN143	335+33.02	0.06' RT	219445.055	500482.733	719993.8990	1642071.6980	MANNIK SMITH GROUP POINT NUMBER 7
MN140	338+87.87	0.19' RT	219553.205	500481.805	720348.7374	1642068.6555	MANNIK SMITH GROUP POINT NUMBER 8
MN134	344+87.91	0.14' RT	219736.081	500480.153	720948.7493	1642063.2340	MANNIK SMITH GROUP POINT NUMBER 10
MN130	347+87.94	0.17' RT	219827.523	500479.345	721248.7683	1642060.5823	MANNIK SMITH GROUP POINT NUMBER 11
MN125	352+87.94	0.14' RT	219979.911	500477.973	721748.7489	1642056.0833	MANNIK SMITH GROUP POINT NUMBER 12
MN120	357+87.93	0.09' RT	220132.295	500476.594	722248.7155	1642051.5588	MANNIK SMITH GROUP POINT NUMBER 14
MN115	362+86.02	0.12' RT	220284.102	500475.245	722746.7911	1642047.1312	MANNIK SMITH GROUP POINT NUMBER 15
MN110	367+86.12	0.11' RT	220436.518	500473.877	723246.8658	1642042.6414	MANNIK SMITH GROUP POINT NUMBER 16
MN105	372+86.17	0.14' RT	220588.922	500472.522	723746.8984	1642038.1965	MANNIK SMITH GROUP POINT NUMBER 17
MN100	377+86.26	0.17' RT	220741.335	500471.169	724246.9634	1642033.7594	MANNIK SMITH GROUP POINT NUMBER 18
MN095	382+86.26	0.13' RT	220893.724	500469.792	724746.9472	1642029.2398	MANNIK SMITH GROUP POINT NUMBER 19
MN090	387+86.26	0.11' RT	221046.111	500468.422	725246.9261	1642024.7443	MANNIK SMITH GROUP POINT NUMBER 21
MN085	392+86.24	0.11' RT	221198.492	500467.058	725746.8833	1642020.2704	MANNIK SMITH GROUP POINT NUMBER 22
MN082	395+86.19	0.06' RT	221289.910	500466.227	726046.8235	1642017.5428	MANNIK SMITH GROUP POINT NUMBER 23
MN065	412+85.06	0.10' RT	221807.417	500475.176	727744.7510	1642046.9050	MANNIK SMITH GROUP POINT NUMBER 26
MN059	418+94.31	0.07' RT	221992.144	500493.894	728350.8350	1642108.3170	MANNIK SMITH GROUP POINT NUMBER 27
MN055	422+85.15						