



LUCAS COUNTY  
 SPRINGFIELD TWP  
 W 1/2 SEC 34, T-9-S, R-6-E  
 LOT 51 GARDEN LAND PLAT

KOTT ENTERPRISES, LTD.,  
 AN OHIO LIMITED LIABILITY COMPANY  
 6560 DORR ST  
 TOLEDO, OH 43615  
 65-45844  
 IN 20160802-0029987  
 IN 20200630-0026256  
 IN 20190822-0033758

KOTT ENTERPRISES, LTD.  
 6429 W BANCROFT ST  
 TOLEDO, OH 43615  
 65-44707  
 MF#9600639A10  
 MF#0200431B04  
 INSTR. NO. 201103230011567

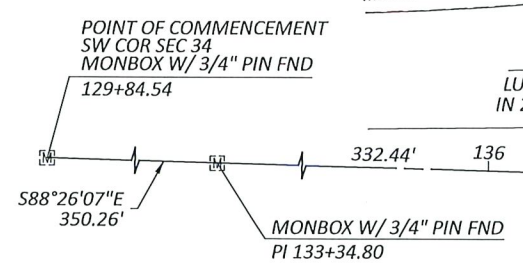
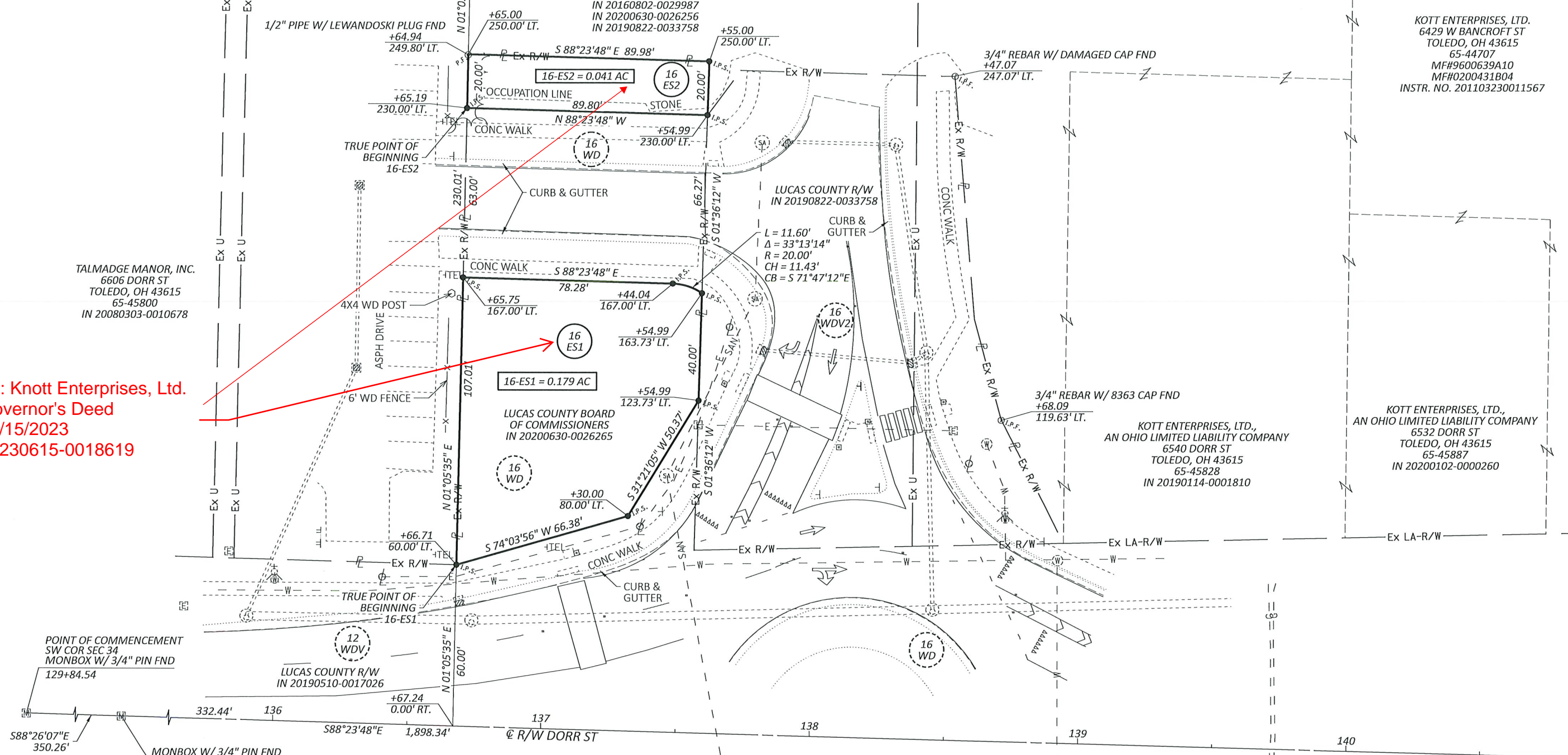
TALMADGE MANOR, INC.  
 6606 DORR ST  
 TOLEDO, OH 43615  
 65-45800  
 IN 20080303-0010678

To: Knott Enterprises, Ltd.  
 Governor's Deed  
 06/15/2023  
 20230615-0018619

KOTT ENTERPRISES, LTD.,  
 AN OHIO LIMITED LIABILITY COMPANY  
 6532 DORR ST  
 TOLEDO, OH 43615  
 65-45887  
 IN 20200102-0000260

KOTT ENTERPRISES, LTD.,  
 AN OHIO LIMITED LIABILITY COMPANY  
 6540 DORR ST  
 TOLEDO, OH 43615  
 65-45828  
 IN 20190114-0001810

LUC-475/DORR STREET  
 PROPERTY SPLIT



- LEGEND**
- EXISTING R/W MONUMENT BOX
  - IRON PIN FOUND W/ ID CAP
  - IRON PIN SET W/ ID CAP
  - IRON PIPE FOUND
  - EX RIGHT OF WAY
  - EX LIMITED ACCESS RIGHT OF WAY
  - R/W PARCELS ACQUIRED BY LUC-475-7.53 - PID 99737

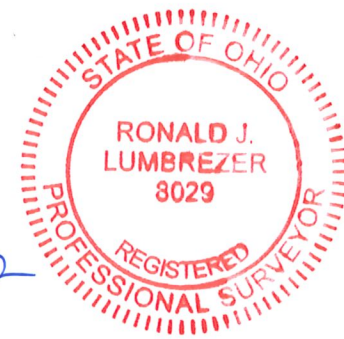
BEARINGS USED HEREIN ARE BASED ON OHIO STATE PLANE COORDINATE SYSTEM, NORTH ZONE NAD83(2011) AND ARE FOR PROJECT USE ONLY.

THE EXISTING R/W WIDTH AND PROPERTY LINE LOCATIONS WERE DETERMINED BY STATE OF OHIO DEPARTMENT OF TRANSPORTATION R/W PLANS "LUC-475-7.53 - PID 99737" ON FILE AT THE DISTRICT 2 OFFICE LOCATED IN BOWLING GREEN, OHIO:

I HEREBY CERTIFY THAT THIS PLAT IS A TRUE DELINEATION OF A SURVEY MADE IN JUNE & JULY OF 2022 BY DGL CONSULTING ENGINEERS.

THE ESTABLISHMENT OF THE PROPERTY LINES AND EXISTING R/W LINES SHOWN ON THIS PLAN WERE DETERMINED BY ME OR UNDER MY DIRECT SUPERVISION.

BY: 7/29/22  
 RJ LUMBREZER PS 8029 DATE



LUC-475/DORR STREET - PID 107708116982  
 MODEL: 116982\_RD001\_Prop Split\_PAPER SIZE: 17x11 (in.) DATE: 7/25/2022 TIME: 10:55:56 AM USER: SEA  
 M:\22146 (Tetra Tech - ODOT DORR ST) Gen Eng 2020-3-PID 116982\116982\_V400-Engineering\RW (Basemaps)\116982\_BR001.dgn

DESIGN AGENCY	
DESIGNER	SEA
REVIEWER	RJL MM-DD-YY
PROJECT ID	116982
SUBSET	TOTAL
1	1
SHEET	TOTAL
P.1	1