

STATE OF OHIO
 DEPARTMENT OF HIGHWAYS
LUC.475-14.60
LUCAS COUNTY
 CITY OF TOLEDO
TOLEDO EXPRESSWAY SYSTEM - PART 28
NORTHWEST EXPRESSWAY
DOUGLAS ROAD TO JERMAIN DRIVE

FED. RD. DIVISION	STATE	FED. AID PROJ. NO.	
2	OHIO	I-475-7(5)	

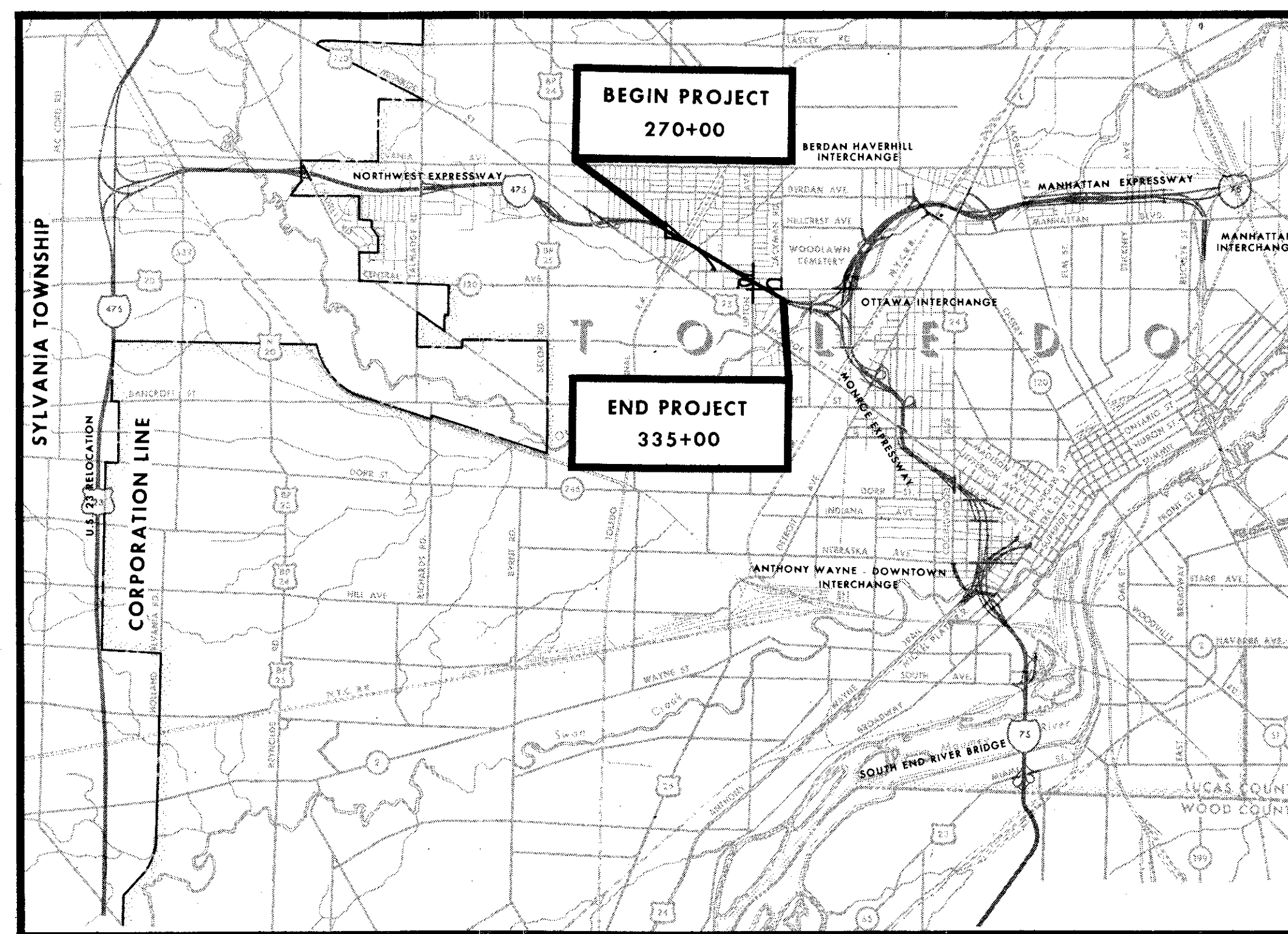
174
310

LUCAS COUNTY
 CITY OF TOLEDO
TOLEDO EXPRESSWAY SYSTEM
EXPRESSWAY—PART 28
 LUC 475-14.60
 RIGHT OF WAY
 LIMITED ACCESS HIGHWAY

1
18

I-475-7(5)
LIMITED ACCESS

RIGHT OF WAY ONLY



THIS IMPROVEMENT IS ESPECIALLY DESIGNED FOR THROUGH TRAFFIC AND HAS BEEN DECLARED A LIMITED ACCESS HIGHWAY OR FREEWAY BY ACTION OF THE DIRECTOR OF HIGHWAYS IN ACCORDANCE WITH THE PROVISIONS OF SECTION 5511.02 OF THE REVISED CODE OF OHIO.

THE STANDARD SPECIFICATIONS OF THE STATE OF OHIO DEPARTMENT OF HIGHWAYS, INCLUDING CHANGES AND SUPPLEMENTAL SPECIFICATIONS LISTED IN THE PROPOSAL SHALL GOVERN THIS IMPROVEMENT.

THE RIGHT OF WAY FOR THIS IMPROVEMENT WILL BE PROVIDED BY THE STATE.

I HEREBY APPROVE THESE PLANS AND DECLARE THAT THE MAKING OF THIS IMPROVEMENT WILL NOT REQUIRE THE CLOSING TO TRAFFIC OF THE HIGHWAY AND THAT PROVISIONS FOR THE MAINTENANCE AND SAFETY OF THE TRAFFIC WILL BE AS SET FORTH IN THE PLANS AND ESTIMATE.

APPROVED _____
 DATE _____ DEPUTY DIRECTOR OF RIGHT OF WAY
 APPROVED _____
 DATE _____ DIRECTOR OF HIGHWAYS

LEGEND

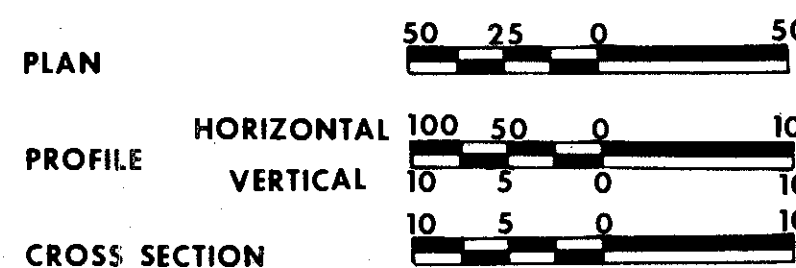
- Z — LOT LINES
- P/L — PROPERTY LINES
- 260A WL PARCEL NUMBER
- WORK LIMIT
- LIMIT OF CONSTRUCTION
- LA — RIGHT OF WAY WITH LIMITED ACCESS
- R/W — RIGHT OF WAY WITHOUT LIMITED ACCESS
- TEMPORARY RIGHT OF WAY
- WORK AGREEMENT
- x-x- CHAIN LINK FENCE
- x-x- CHAIN LINK GATE

LOCATION MAP



PORTION TO BE IMPROVED _____

OTHER SCALES - FEET



PREPARED AND RECOMMENDED BY
HOWARD, NEEDLES, TAMMEN & BERGENDOFF
 CONSULTING ENGINEERS
 KANSAS CITY CLEVELAND NEW YORK

DEPARTMENT OF COMMERCE
 BUREAU OF PUBLIC ROADS
 APPROVED: _____
 DIVISION ENGINEER DATE

FILE NO.	LUCAS COUNTY	PART 28
	SEC. LUC 475-14.60	
	DATE OF LETTING _____	196 _____
	CONTRACT NO.	

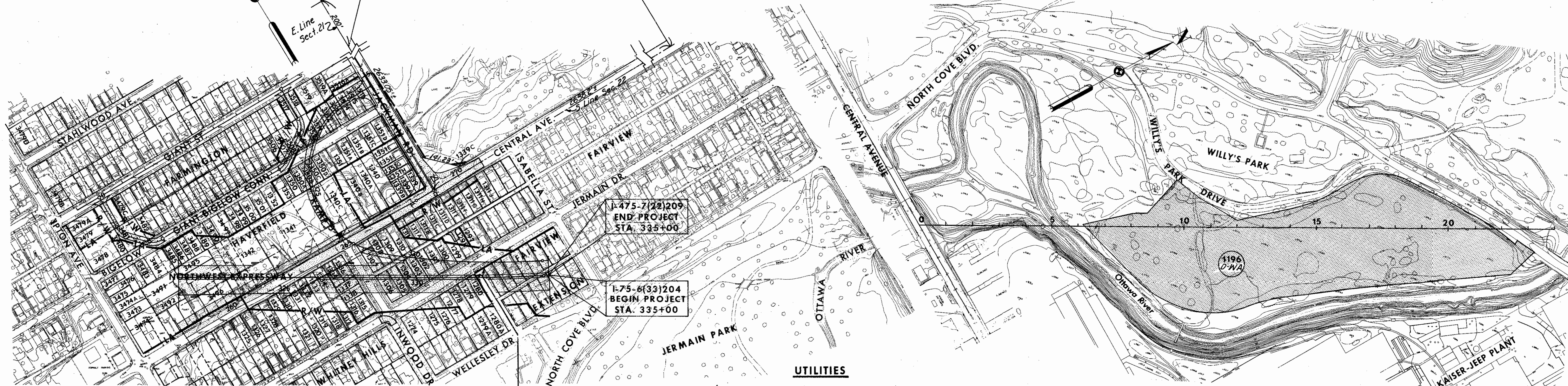
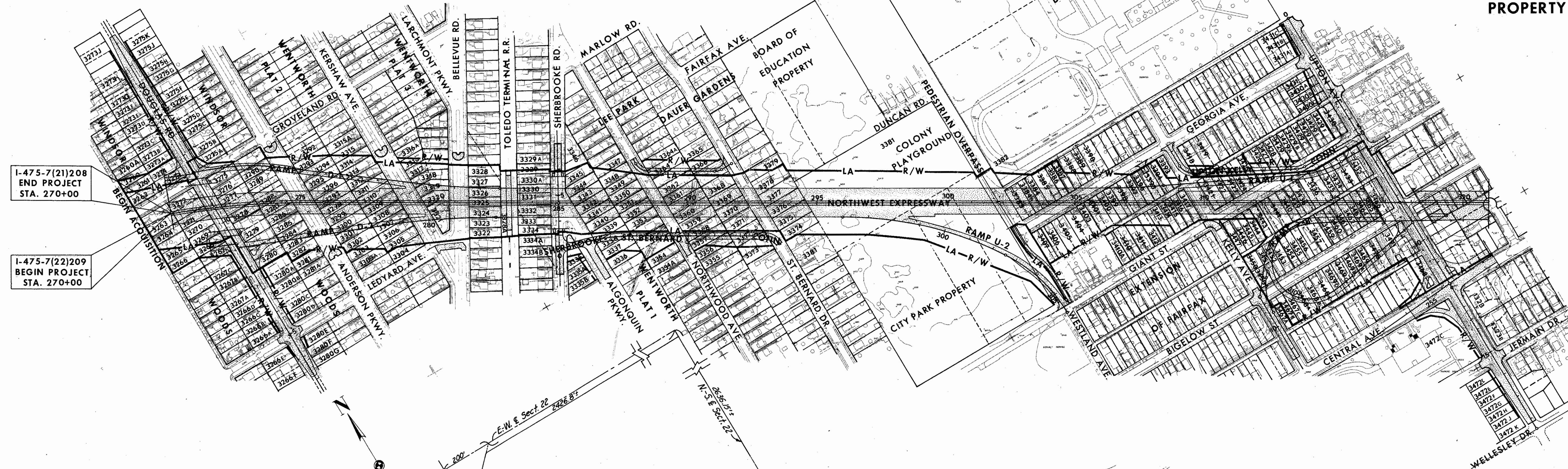
174
 310
 1
 18
 R-34158 #3 C-288

FED. RD. DIVISION	STATE	PROJECT
2	OHIO	I-475-7(5)

175
310

LUCAS COUNTY
CITY OF TOLEDO
TOLEDO EXPRESSWAY SYSTEM
EXPRESSWAY - PART 28
LUC 475-14.60
PROPERTY MAP

2
18



I-475-7(22)209
END PROJECT
STA. 335+00

I-75-6(33)204
BEGIN PROJECT
STA. 335+00

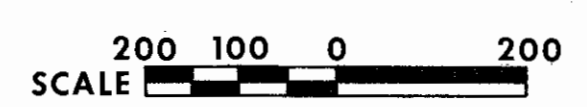
END ACQUISITION
I-475-7(5)

BEGIN ACQUISITION
I-75-6(4)

- UTILITIES**
- COLUMBIA GAS OF OHIO _____ TOLEDO, OHIO
 - OHIO BELL TELEPHONE COMPANY _____ TOLEDO, OHIO
 - TOLEDO EDISON COMPANY _____ TOLEDO, OHIO
 - DIVISION OF FIRE AND POLICE ALARM _____ CITY OF TOLEDO
 - DIVISION OF WATER _____ CITY OF TOLEDO
 - SANITARY AND STORM SEWERS _____ CITY OF TOLEDO
 - STANDARD OIL CO. OF OHIO _____ TOLEDO, OHIO

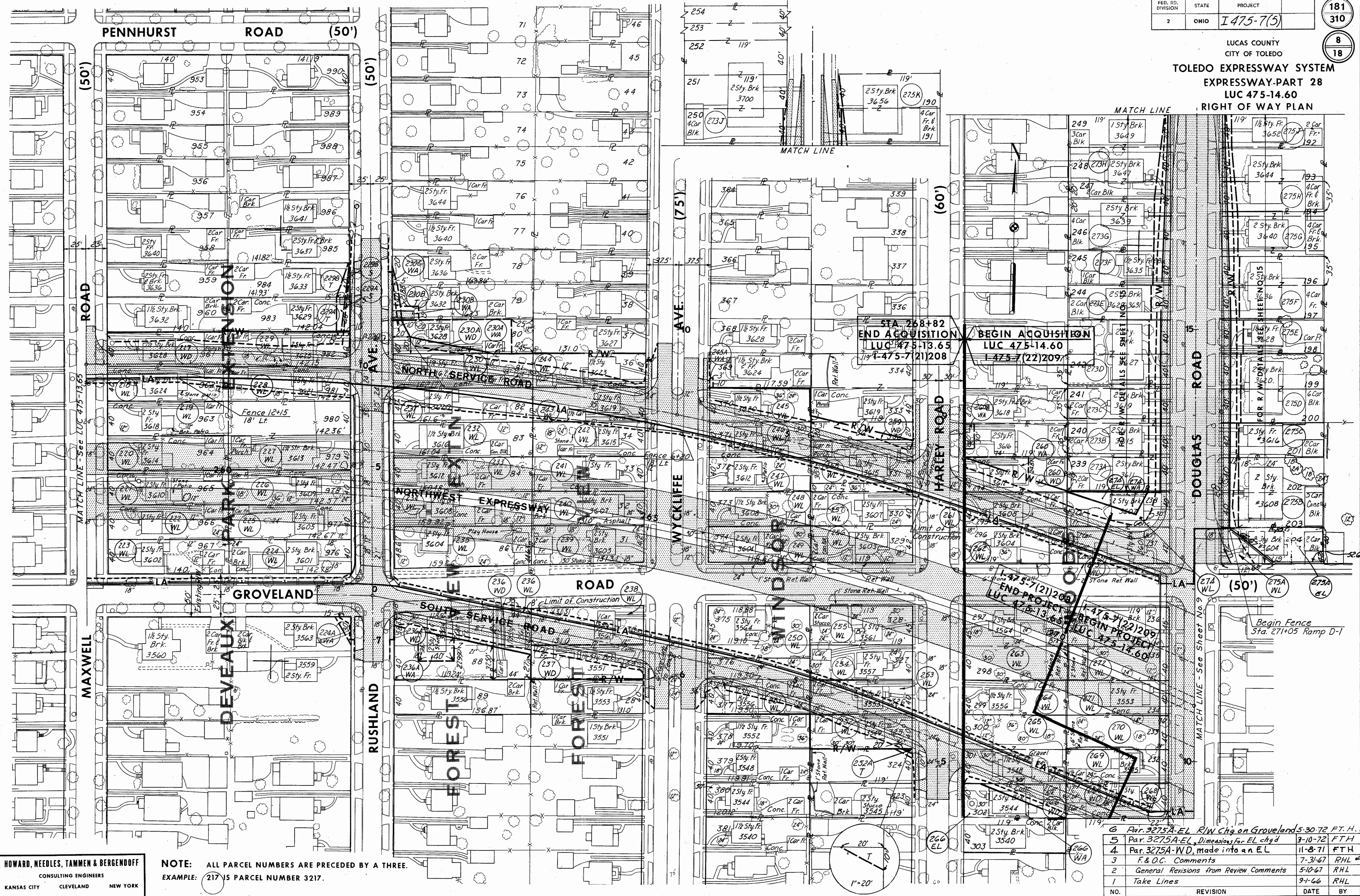
WILLY'S PARK FILL AREA
SEE GENERAL NOTES AND SHEETS NO. 246-246D

SCALE 1"=200'
HOWARD, NEEDLES, TAMMEN & BERGENDOFF
MADE RHL DATE 2-9-66 CONSULTING ENGINEERS
TRCD. DATE _____
CKD. REK. DATE 12-18-67 KANSAS CITY. CLEVELAND. NEW YORK.



1	Chgd 1196A-WD to 1196D-WA	12-10-71	F.T.H.
3	Added Acquisition Blocks	12-10-70	F.T.H.
2	F&OC Comments	11-8-67	REK
1	Take Lines	9-1-66	RHL
NO.	REVISION	DATE	BY

LUCAS COUNTY
CITY OF TOLEDO
TOLEDO EXPRESSWAY SYSTEM
EXPRESSWAY-PART 28
LUC 475-14.60
RIGHT OF WAY PLAN



SCALE 1"=50'
MADE NAK DATE 1-2-66
TRCD DATE
CKD RER DATE 8-3-67

HOWARD, NEEDLES, TAMMEN & BERGENDOFF
CONSULTING ENGINEERS
KANSAS CITY CLEVELAND NEW YORK

NOTE: ALL PARCEL NUMBERS ARE PRECEDED BY A THREE.
EXAMPLE: 217 IS PARCEL NUMBER 3217.

6	Par. 3275A-EL R/W Chg on Groveland 5-30-72 F.T.H.		
5	Par. 3275A-EL Dimensions for EL chgd 9-10-72 F.T.H.		
4	Par. 3275A-WD, made into an EL 11-8-71 F.T.H.		
3	F & O.C. Comments 7-31-67 R.H.L.		
2	General Revisions from Review Comments 5-10-67 R.H.L.		
1	Take Lines 9-4-66 R.H.L.		
NO.	REVISION	DATE	BY

LUCAS COUNTY
CITY OF TOLEDO
TOLEDO EXPRESSWAY SYSTEM
EXPRESSWAY-PART 28
LUC 475-14.60
RIGHT OF WAY PLAN



SCALE 1" = 50'
MADE CRJ DATE 2-14-62
TRCD DATE DATE
CD. REK DATE 9-67

HOWARD, NEEDLES, TAMMEN & BERGENDOFF
CONSULTING ENGINEERS
KANSAS CITY CLEVELAND NEW YORK

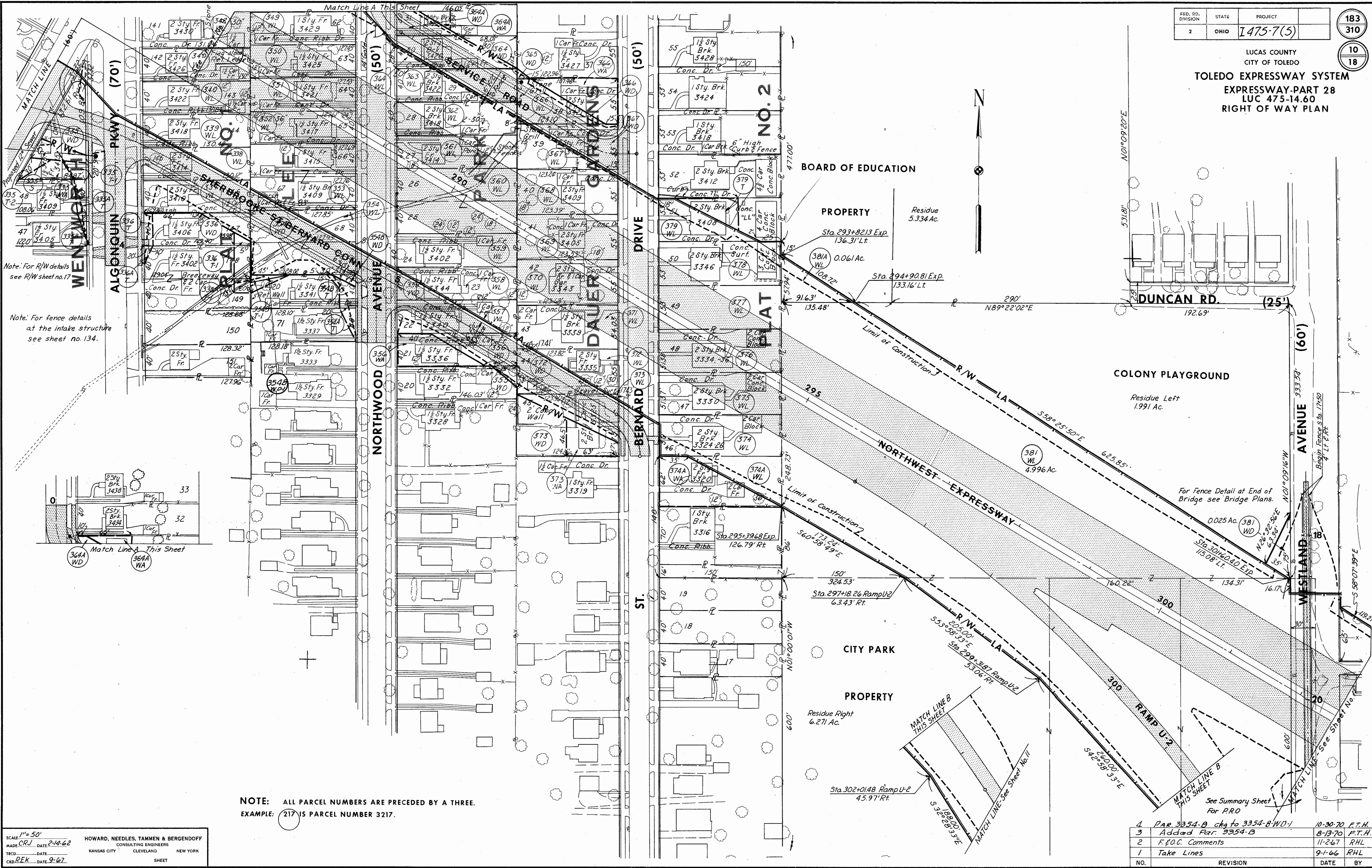
NOTE: ALL PARCEL NUMBERS ARE PRECEDED BY A THREE.
EXAMPLE: 217 IS PARCEL NUMBER 3217.

NO.	REVISION	DATE	BY
4	Addition of 3346 EL	11-5-68	C.W.B.
3	Changed 3304 WA to 3304 EL	8-20-68	REE
2	FIOC Comments	10-30-67	REK
1	Take Lines	9-1-66	RHL

Scanned July 1977

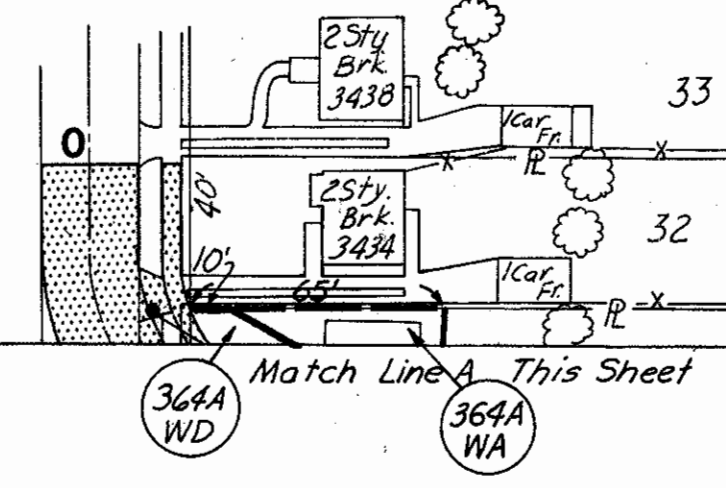
FED. RD. DIVISION	STATE	PROJECT	183 310
2	OHIO	L475-7(5)	10 18

LUCAS COUNTY
CITY OF TOLEDO
TOLEDO EXPRESSWAY SYSTEM
EXPRESSWAY-PART 28
LUC 475-14.60
RIGHT OF WAY PLAN



Note: For R/W details see R/W sheet no. 17

Note: For fence details at the intake structure see sheet no. 134.



NOTE: ALL PARCEL NUMBERS ARE PRECEDED BY A THREE.
EXAMPLE: 217 IS PARCEL NUMBER 3217.

SCALE: 1" = 50'
MADE: CRJ DATE: 2-14-62
TRCD: DATE: _____
CKD: REK DATE: 9-67

HOWARD, NEEDLES, TAMMEN & BERGENDOFF
CONSULTING ENGINEERS
KANSAS CITY CLEVELAND NEW YORK

SHEET

NO.	REVISION	DATE	BY
4	PAR. 3354-B chg to 3354-B-WD-1	10-30-70	F.T.H.
3	Added Par. 3354-B	8-13-70	F.T.H.
2	F.F.O.G. Comments	11-2-67	R.H.L.
1	Take Lines	9-1-66	R.H.L.

LUCAS COUNTY
CITY OF TOLEDO
TOLEDO EXPRESSWAY SYSTEM
EXPRESSWAY-PART 28
LUC 475-14.60
RIGHT OF WAY PLAN



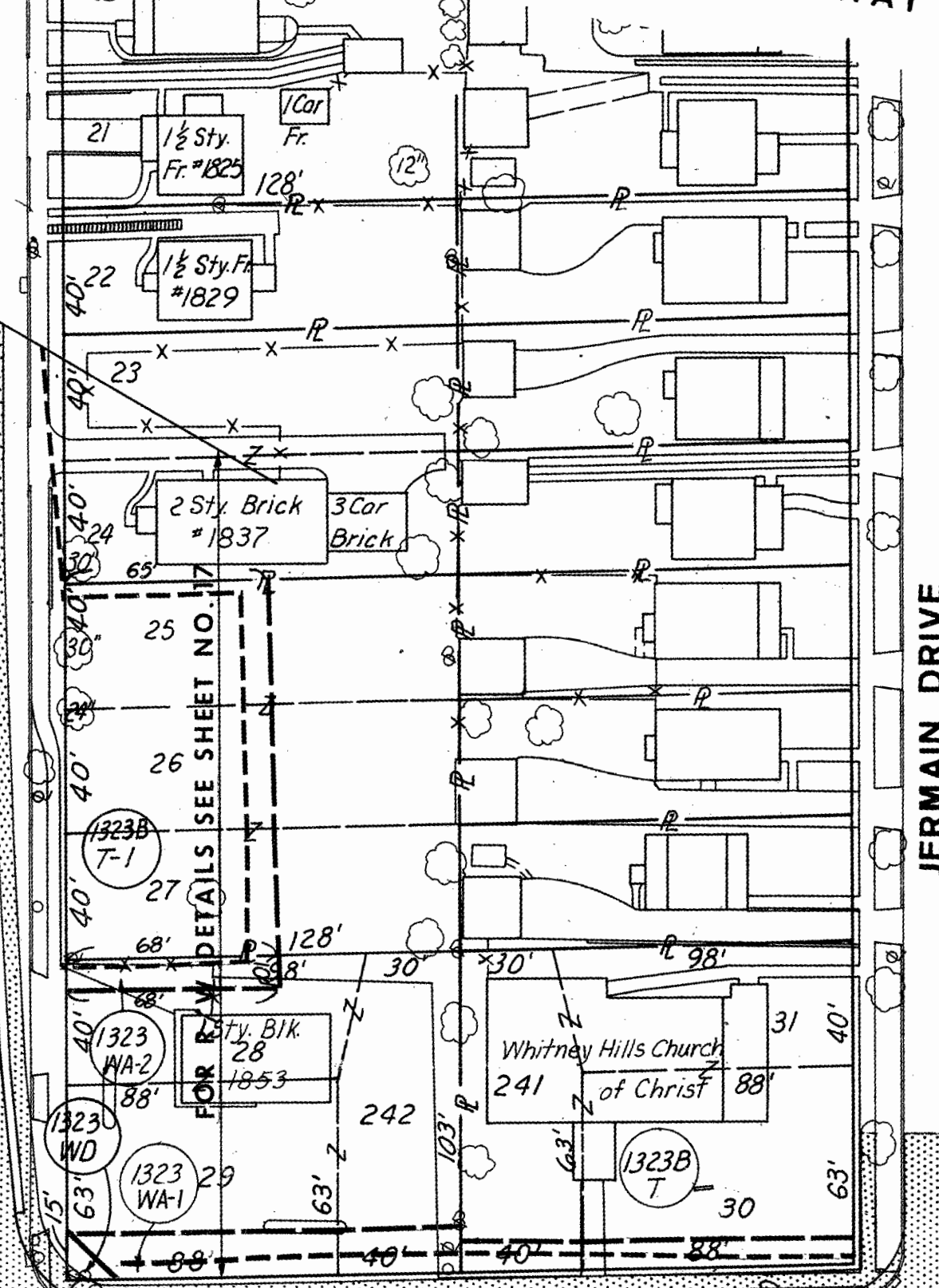
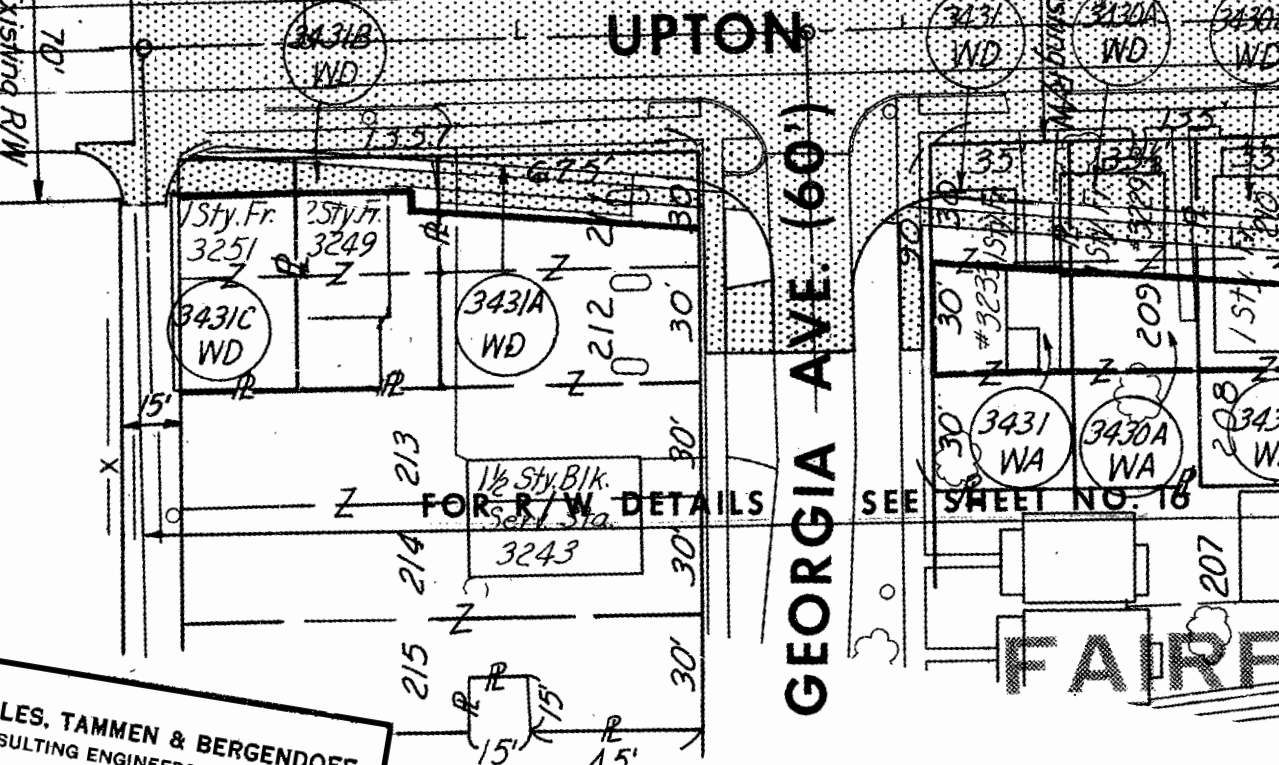
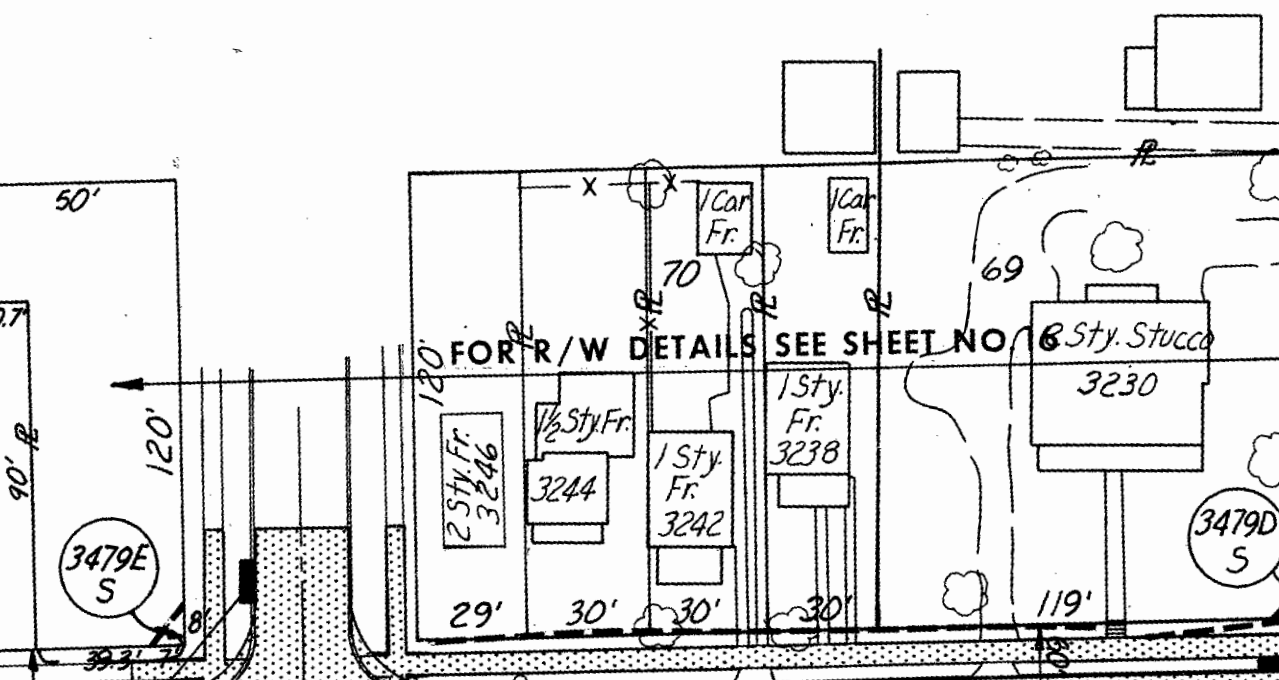
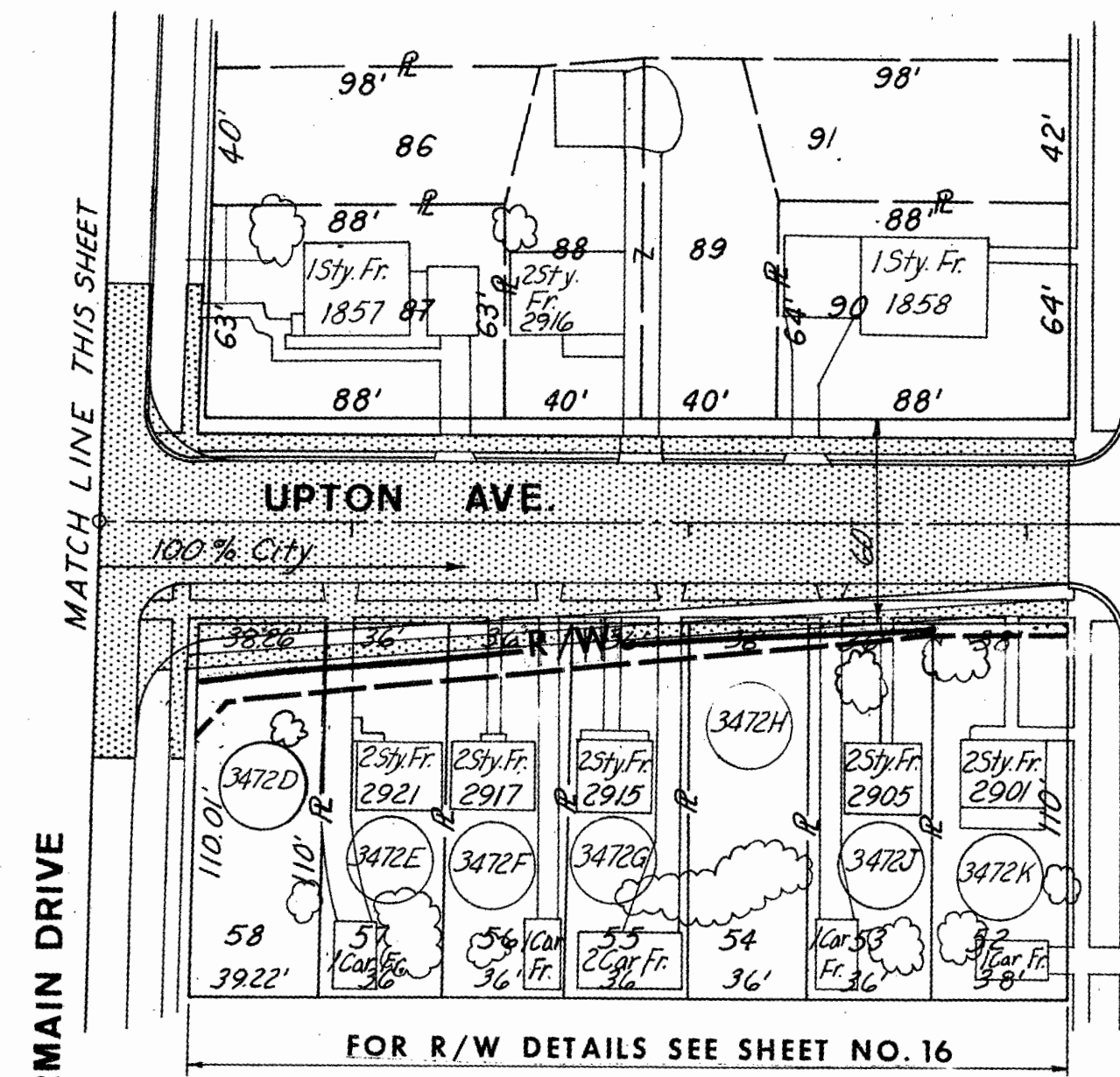
NOTE: ALL PARCEL NUMBERS ARE PRECEDED BY A THREE.
EXAMPLE: 217 IS PARCEL NUMBER 3217.

SCALE 1" = 50'
HOWARD, NEEDLES, TAMMEN & BERGENOFF
CONSULTING ENGINEERS
MADE C.R.V. DATE 2-14-62
TRCD DATE
CKD/REK DATE 9-67
KANSAS CITY CLEVELAND NEW YORK
SHEET

NO.	REVISION	DATE	BY
3	Begin End of Acq on Central Ave.	2-19-70	F.T.H.
2	F&OC Comment	11-7-67	REK
1	Take Lines	9-7-66	RHL
4	Added Par. 3394 EL	4-2-73	F.T.H.

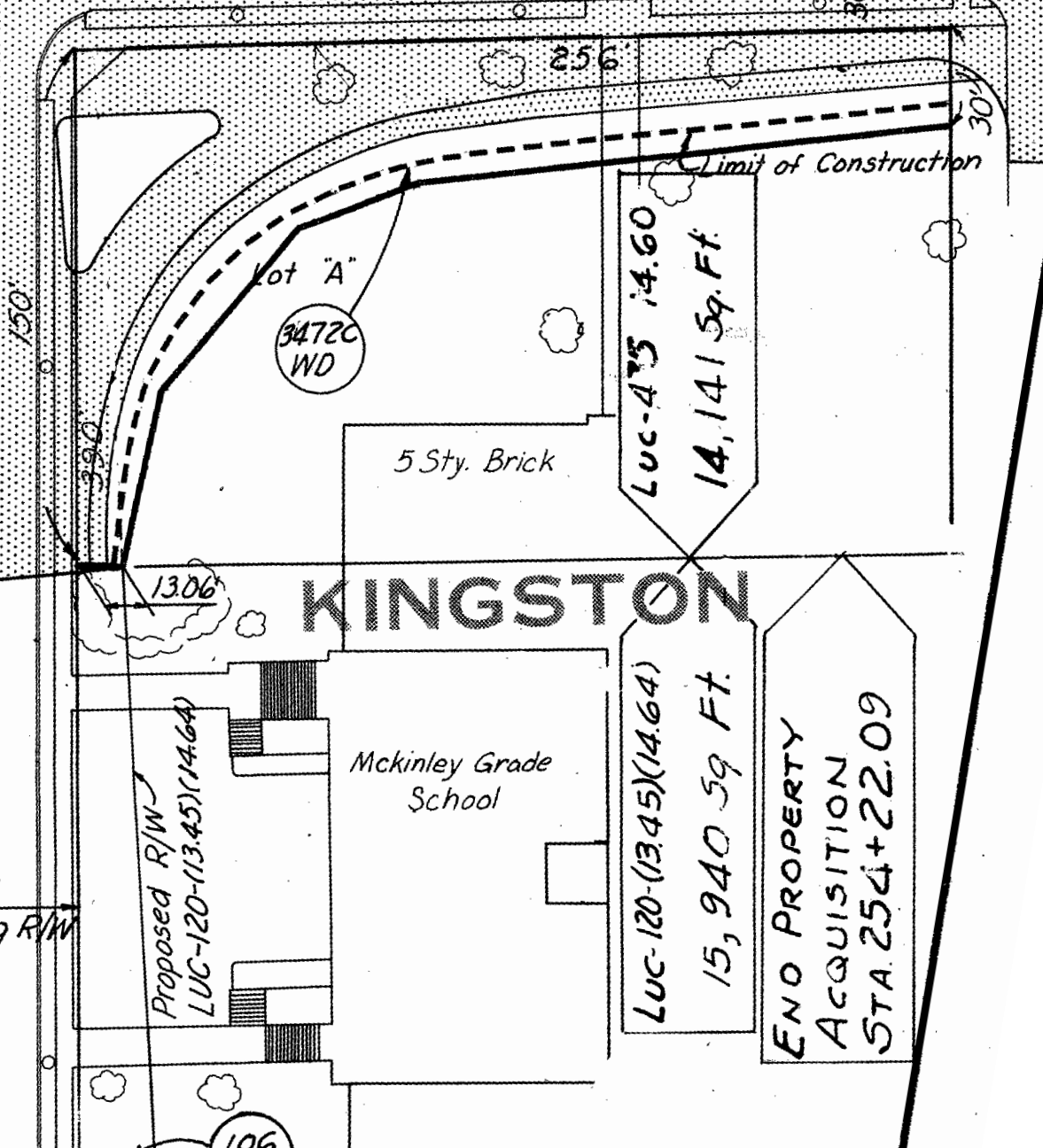
FED. RD. DIVISION	STATE	PROJECT
2	OHIO	I 475-7(5)

LUCAS COUNTY
CITY OF TOLEDO
TOLEDO EXPRESSWAY SYSTEM
EXPRESSWAY-PART 28
LUC 475-14.60
RIGHT OF WAY PLAN



SCALE: 1" = 50'
MADE D.H.N. DATE 5-14-63
TRCD. DATE 5-14-63
CRO. REK. DATE 9-67

HOWARD, NEEDLES, TAMMEN & BERGENDOFF
CONSULTING ENGINEERS
KANSAS CITY
CLEVELAND
NEW YORK





END ACQUISITION
I-475-7(5)

BEGIN ACQUISITION
I-75-6(4)

SCALE: 1" = 50'
 MADE: D.H.N. DATE: 5-15-63
 TRCD: DATE: _____
 CKD: REK DATE: 2-6-67

HOWARD, NEEDLES, TAMMEN & BERGENDOFF
 CONSULTING ENGINEERS
 KANSAS CITY CLEVELAND NEW YORK

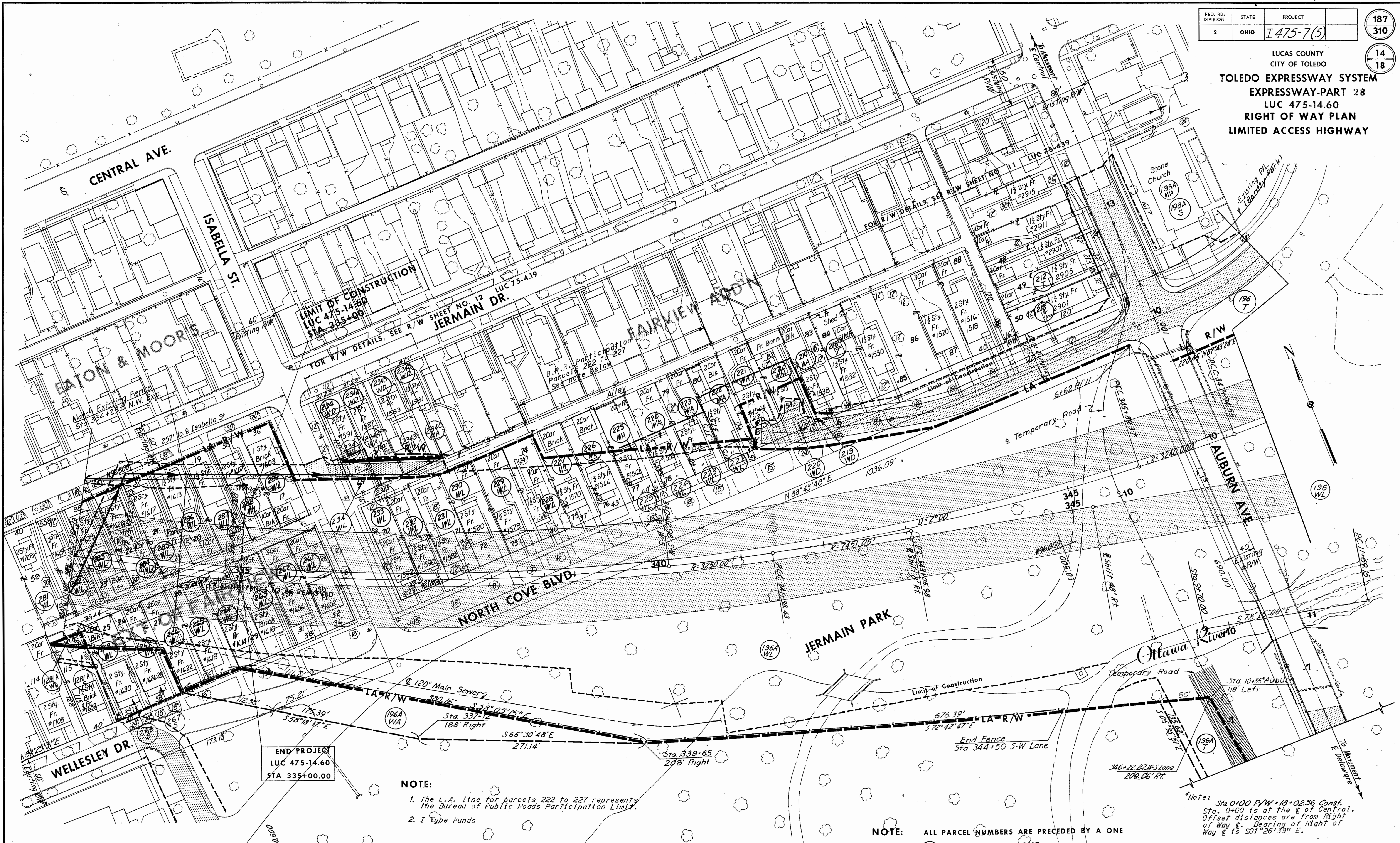
4 Acquisition Blocks Added 12-10-70 F.T.H.

3	Corrected Parcel No 1327	6-18-66	RRR
2	F&OC Comments	11-8-67	REK
1	Take Lines	9-1-66	R.H.L.
NO.	REVISION	DATE	BY

Stamped
5/19/66

FED. RD. DIVISION	STATE	PROJECT	187
2	OHIO	L475-7(S)	310
			14
			18

LUCAS COUNTY
CITY OF TOLEDO
TOLEDO EXPRESSWAY SYSTEM
EXPRESSWAY-PART 28
LUC 475-14.60
RIGHT OF WAY PLAN
LIMITED ACCESS HIGHWAY



END PROJECT
LUC 475-14.60
STA 335+00.00

- NOTE:**
- The L.A. line for parcels 222 to 227 represents the Bureau of Public Roads Participation Limit.
 - I Type Funds
 - For areas of parcels 1196A WL and 1196A T see table, R/W Sheet No. 4.(175-4.19)

NOTE: ALL PARCEL NUMBERS ARE PRECEDED BY A ONE
EXAMPLE (217) IS PARCEL NUMBER 1217

*Note: Sta 0+00 R/W = 13+02.36 Const. Sta. 0+00 is at the E of Central. Offset distances are from Right of Way E. Bearing of Right of Way E is S01°26'39" E.

SCALE 1" = 50'
MADE D.H.N. DATE 5-21-63
HOWARD, NEEDLES, TAMMEN & BERGENDOFF CONSULTING ENGINEERS
KANSAS CITY CLEVELAND NEW YORK

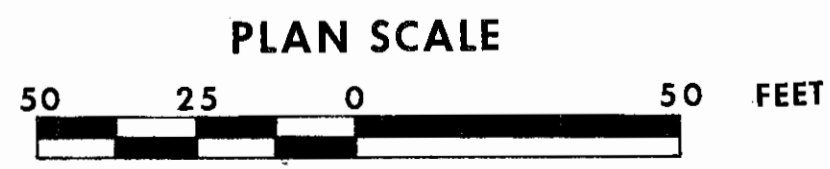
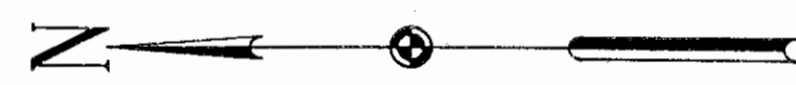
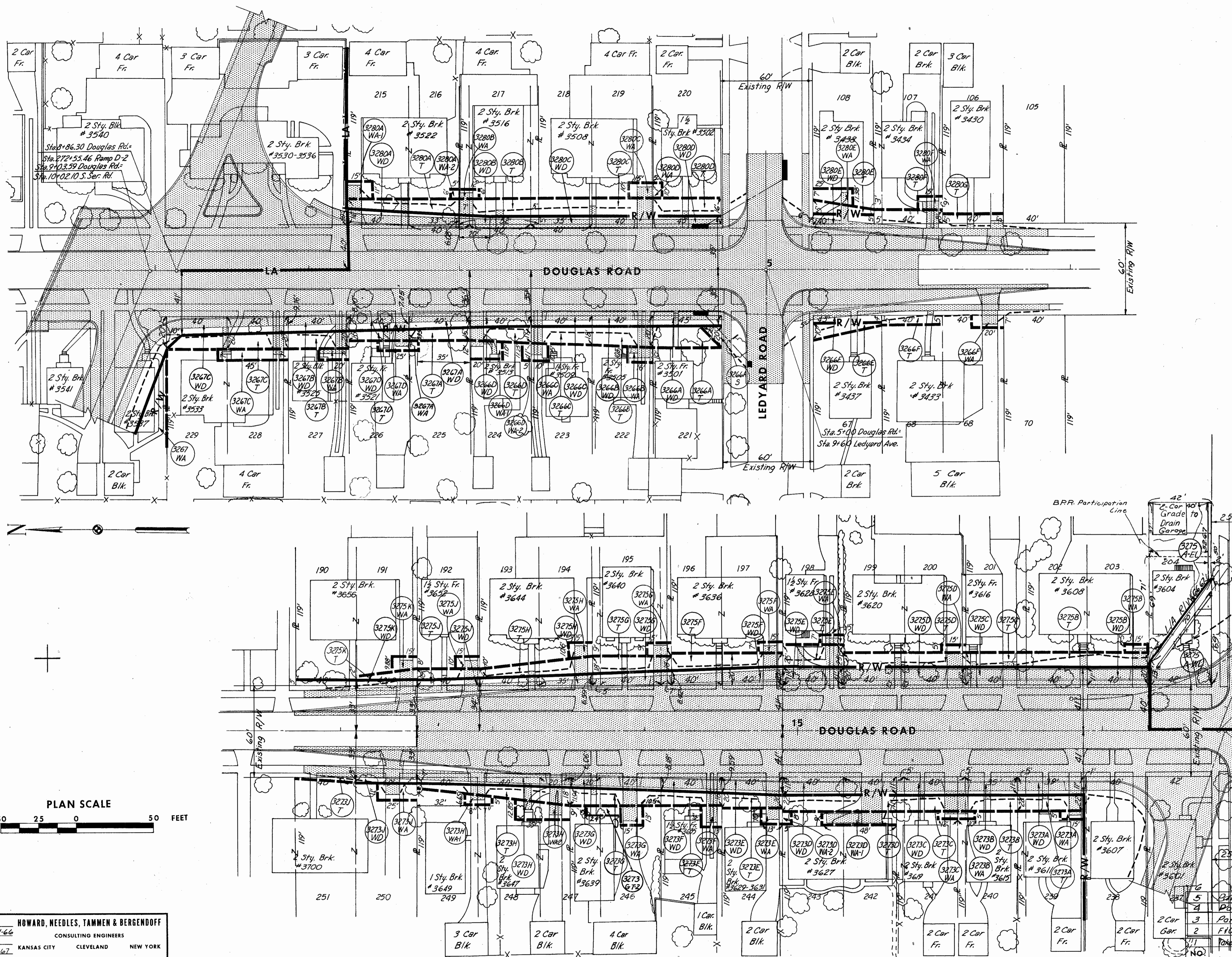
2	F#OC Comments	11-9-67	REK
1	Revise Take Lines	6-16-66	DAT
NO.	REVISION	DATE	BY

FED. RD. DIVISION	STATE	PROJECT
2	OHIO	I 475-7(5)

188
310

15
18

LUCAS COUNTY
CITY OF TOLEDO
TOLEDO EXPRESSWAY SYSTEM
EXPRESSWAY - PART 28
LUC 475-14.60
RIGHT OF WAY PLAN



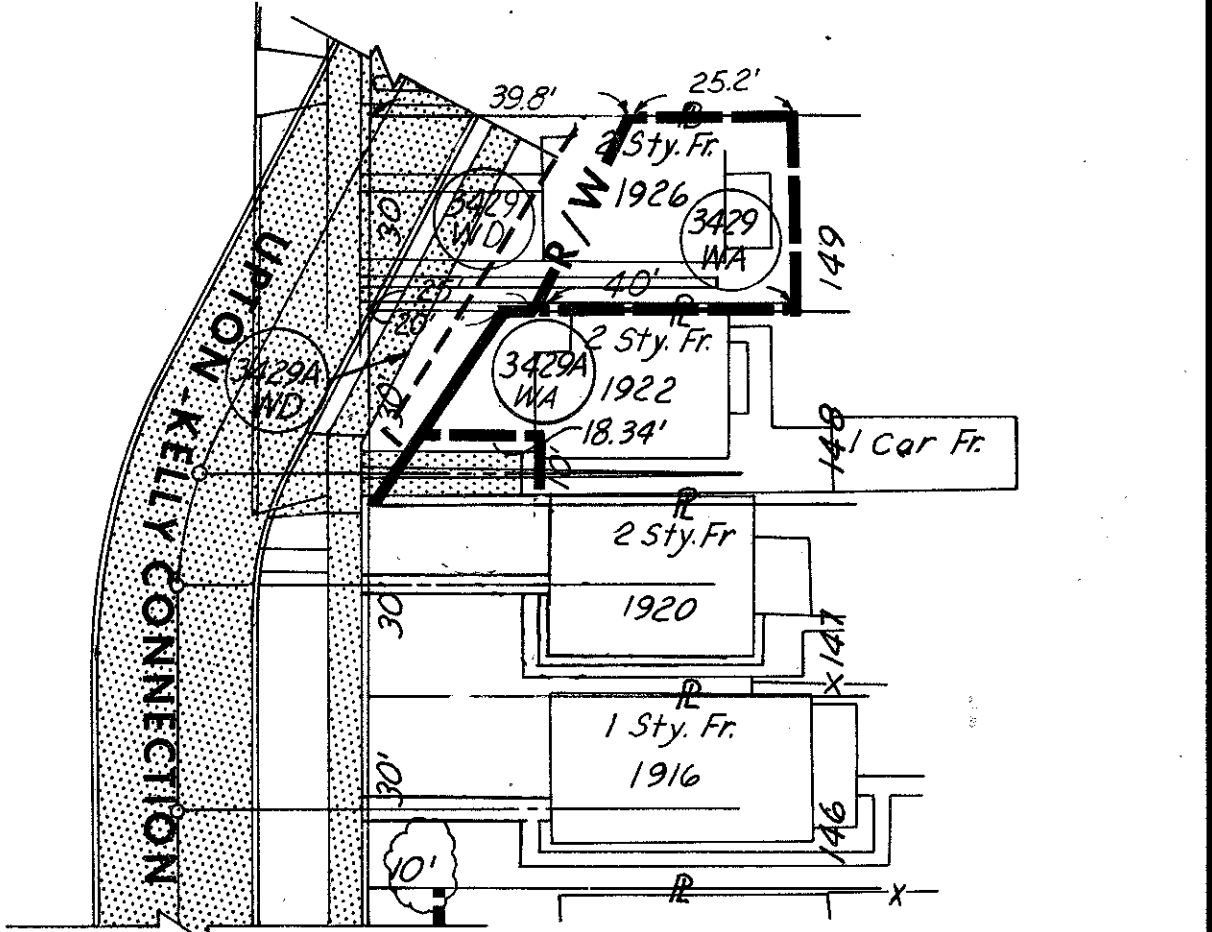
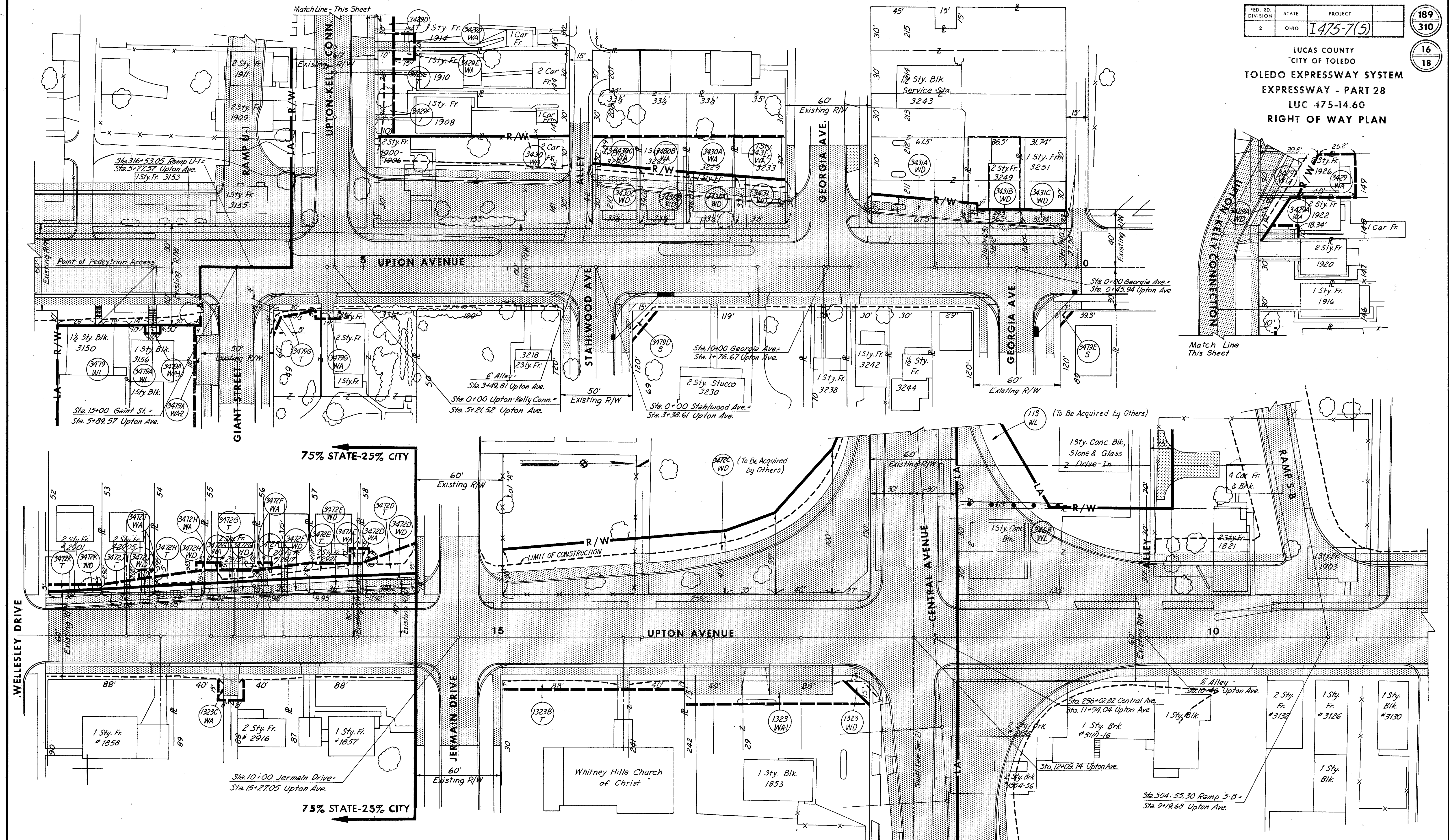
SCALE 1" = 30'
MADE RHL DATE 9-1-66
TRCD. DATE
CKD. REK DATE 9-1-67

HOWARD, NEEDLES, TAMMEN & BERGENDOFF
CONSULTING ENGINEERS
KANSAS CITY CLEVELAND NEW YORK

NO.	REVISION	DATE	BY
1	Par 3275A-EL R/W chg on Groveland	5-30-72	F.T.H.
2	Parcel 3275A-EL LAR/W line chgd	3-10-72	F.T.H.
3	Parcel 3273G-T-2 added	9/5/69	C.W.B.
4	Parcel 3275A Change to Total Take	10-7-68	C.W.B.
5	FD/C Comments	10-30-67	REK
6	Take Lines	9-1-66	RHL

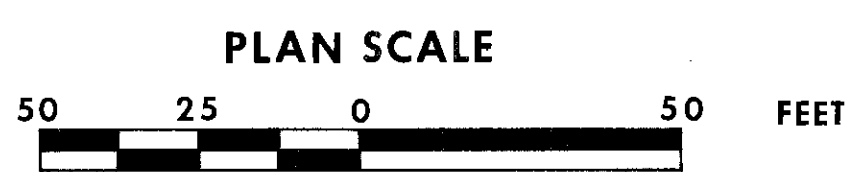
FED. RD. DIVISION	STATE	PROJECT	189 310
2	OHIO	I475-7(5)	
LUCAS COUNTY CITY OF TOLEDO			16 18

LUCAS COUNTY
CITY OF TOLEDO
TOLEDO EXPRESSWAY SYSTEM
EXPRESSWAY - PART 28
LUC 475-14.60
RIGHT OF WAY PLAN



75% STATE-25% CITY

75% STATE-25% CITY



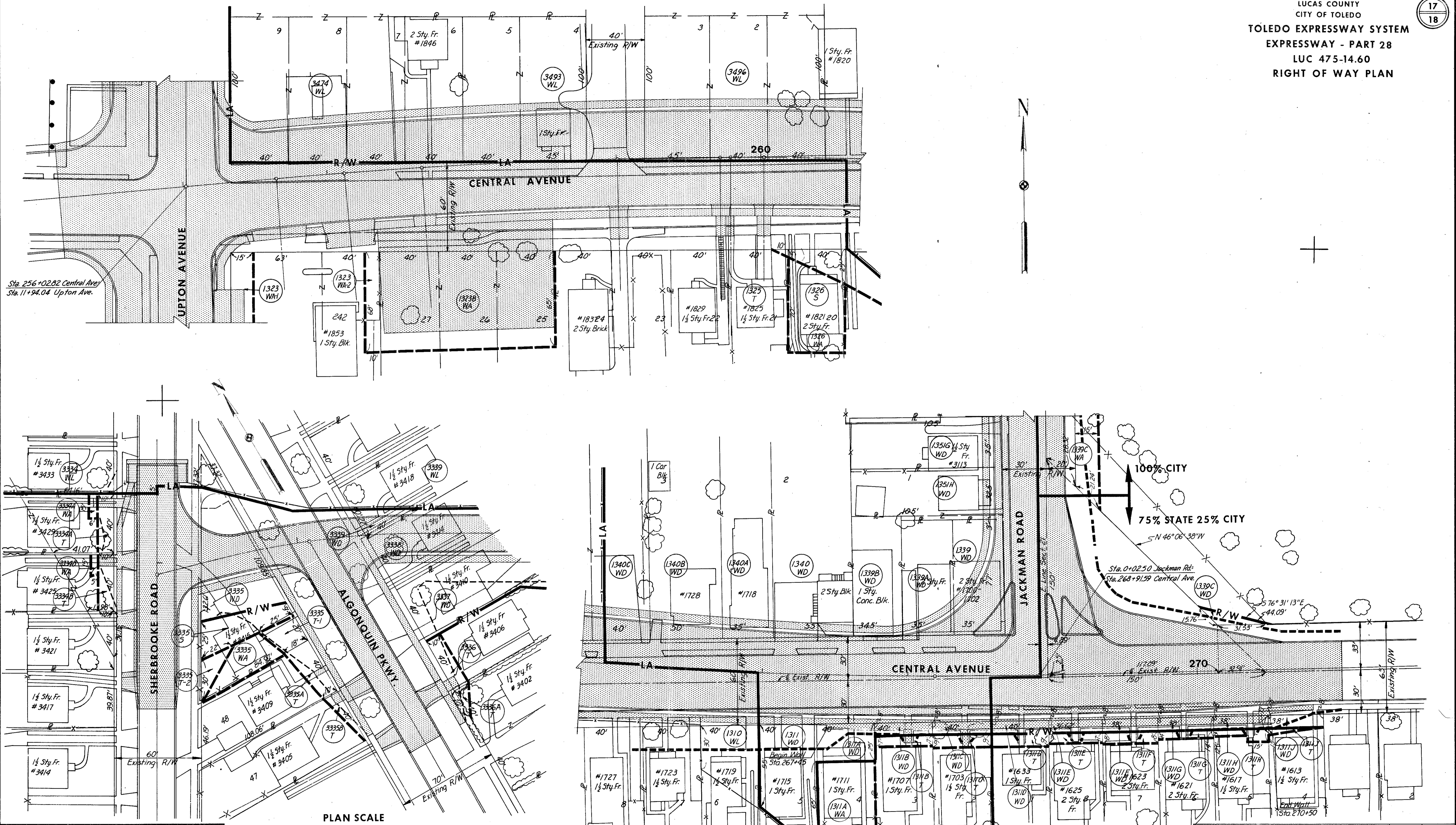
SCALE 1"=30'
HOWARD, NEEDLES, TAMMEN & BERGENDOFF
MADE RHL DATE 9-1-66 CONSULTING ENGINEERS
TRCD DATE KANSAS CITY CLEVELAND NEW YORK
CKD REK DATE 9-6-67

4	3431B & 3431C	Revised Take Lines	9-30-68	C.W.B.
3	3431B & 3431C		4-10-69	L.C.E.'s
2	F#OC	Comments	11-8-67	REK
1		Take Lines	9-1-66	RHL
NO.	REVISION		DATE	BY

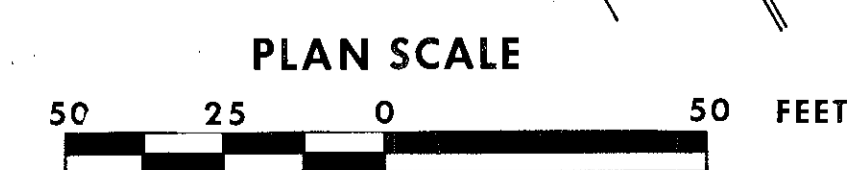
5/20/67
 July 14

FED. RD. DIVISION	STATE	PROJECT	190 310
2	OHIO	I 475-7(5)	

LUCAS COUNTY
 CITY OF TOLEDO
TOLEDO EXPRESSWAY SYSTEM
 EXPRESSWAY - PART 28
 LUC 475-14.60
 RIGHT OF WAY PLAN



SCALE 1"=30'
 HOWARD, NEEDLES, TAMMEN & BERGENDOFF
 MADE R.H.L. DATE 9-1-66 CONSULTING ENGINEERS
 TRCD DATE KANSAS CITY CLEVELAND NEW YORK
 CKD REK DATE 9-67



2	F&OC Comments	11-9-66	REK
1	Take Lines	9-1-66	RHL
NO.	REVISION	DATE	BY

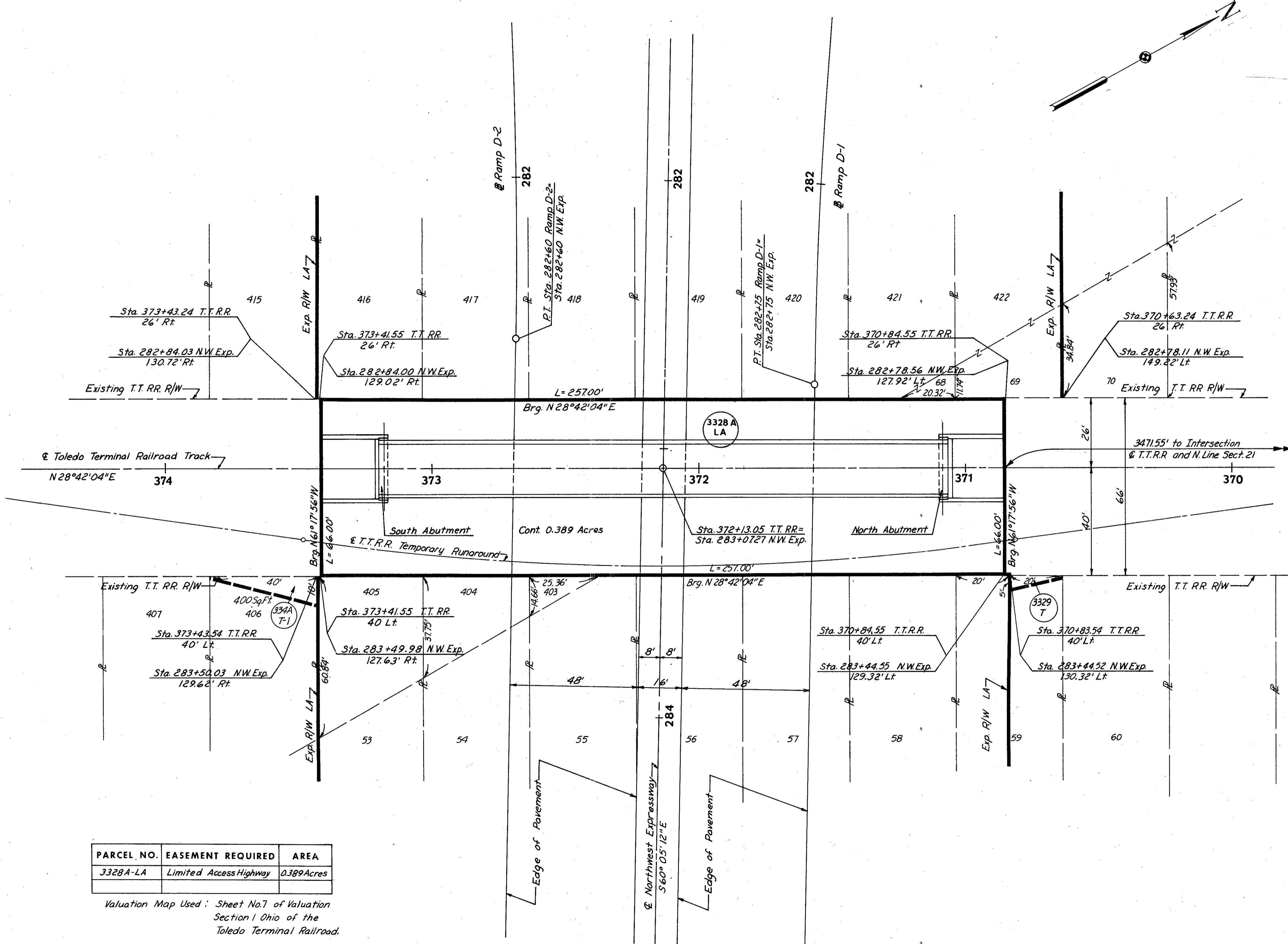
TOLEDO TERMINAL RAILROAD PLAT

FED. RD. DIVISION	STATE	PROJECT
2	OHIO	I475-7(5)

191
310

LUCAS COUNTY
CITY OF TOLEDO
TOLEDO EXPRESSWAY SYSTEM
EXPRESSWAY - PART 28
LUC 475-14.60
TOLEDO TERMINAL RAILROAD
RIGHT OF WAY PLAT

18
18



PARCEL NO.	EASEMENT REQUIRED	AREA
3328 A-LA	Limited Access Highway	0.389 Acres

Valuation Map Used: Sheet No. 7 of Valuation Section I Ohio of the Toledo Terminal Railroad.

SCALE 1"=20'
HOWARD, NEEDLES, TAMMEN & BERGENDOFF
MADE RHL DATE 9-2-66 CONSULTING ENGINEERS
TRCD. RHL DATE 2-2-66 KANSAS CITY CLEVELAND NEW YORK
CKD. REK DATE 2-3-66

2	F&OC Comments	REK	11-10-67
1	Take Lines	RHL	9-2-66
NO.	REVISION	DATE	BY

DORSETT ROAD TO HERMAN DRIVE

Luc 475-14.60

C-28