

STATE OF OHIO DEPARTMENT OF HIGHWAYS LUC-223-(0.02-0.21) LUC-333-(2.16-2.97) LUCAS COUNTY SYLVANIA TOWNSHIP AND VILLAGE OF SYLVANIA

FED. RD. DIVISION	STATE	PROJECT	TYPE FUNDS
2	OHIO	STATE	

LUC-223-(0.02-0.21)
LUC-333-(2.16-2.97)

CONVENTIONAL SIGNS

CENTER LINE	_____
STATE LINE	_____
COUNTY LINE	_____
TOWNSHIP LINE	_____
SECTION LINE	_____
CORPORATION LINE	_____
PROPERTY LINE	_____
POLE LINE	Telephone ϕ ϕ Electric ϕ ϕ
FENCE LINE	x x x x x x x x x x
RAILROADS	_____
DRAIN PIPE	_____

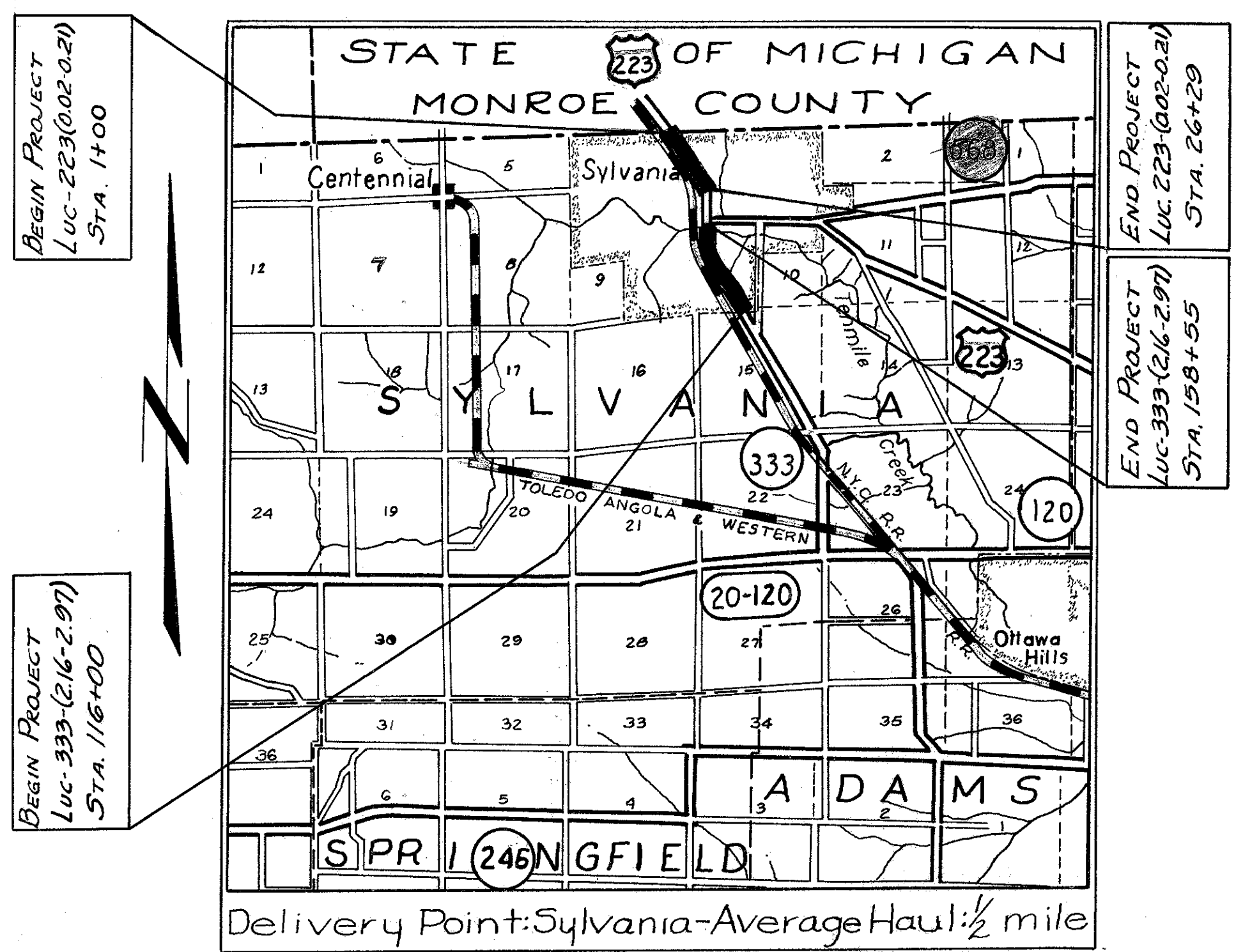
New _____ Old _____

INDEX OF SHEETS

TITLE SHEET	1
TYPICAL SECTIONS	2,3
GENERAL NOTES, PAVEMENT COMPUTATIONS, GENERAL SUMMARY	4
SUBSUMMARIES	5
PLAN AND PROFILE	6-12
CROSS SECTIONS	13-15
DRIVEWAY AND STEP DETAILS	6

LINE DATA

BEGIN WORK US 223	STA. 0+00
BEGIN PROJECT US 223	STA. 1+00
END PROJECT US 223	STA. 26+29
END WORK US 223	STA. 27+12
GROSS LENGTH OF PROJECT ON US 223 = NET LENGTH = 2529 LIN. FT. OR 0.478 MILES	
GROSS LENGTH OF WORK ON US 223 = NET LENGTH = 2712 LIN. FT. OR 0.513 MILES	
BEGIN WORK SR 333	STA. 113+57.7
BEGIN PROJECT SR 333	STA. 116+00
END PROJECT SR 333	STA. 158+55
END WORK SR 333	STA. 158+65
GROSS LENGTH OF PROJECT = 4255 LIN. FT. OR 0.805 MILES	
GROSS LENGTH OF WORK = 4507.3 LIN. FT. OR 0.853 MILES	
DEDUCT FOR BRIDGE - STA. 153+91.6 TO STA. 154+55.4 = 63.8 LIN. FT.	
NET LENGTH OF PROJECT = 4191.2 LIN. FT. OR 0.793 MILES	
NET LENGTH OF WORK = 4443.5 LIN. FT. OR 0.841 MILES	



LOCATION PLAN

Scale in miles

PORTION TO BE IMPROVED	_____
STATE HIGHWAYS	=====
COUNTY ROADS	=====
DETOUR	NONE

SCALES

PLAN	1" = 50'
PROFILE (Vert.)	1" = 5'
PROFILE (Horiz.)	1" = 50'
CROSS SECTIONS	1" = 5'

The Standard Specifications of the State of Ohio, Department of Highways, including changes and Supplemental Specifications listed in the proposal shall govern this improvement.

I hereby approve these plans and declare that the making of this improvement will not require the closing to traffic of the highway and that provisions for maintenance and safety of traffic will be as set forth in these plans and estimates.

The right of way for this improvement will be provided by The State of Ohio.

- Approved _____
Date April 2, 1956 Division Deputy Director.
- Approved _____
Date 4-19-56 Deputy Director of Planning and Programming.
- Approved _____
Date _____ Engineer of Bridges.
- Approved _____
Date 4-18-56 Engineer of Location and Design.
- Approved _____
Date 4-18-56 Deputy Director of Design and Construction.
- Approved _____
Date 4-20-56 First Assistant Director.
- Approved _____
Date 4-30-56 Director of Highways.

Print Approved _____
Date 4-11-56 Mayor of Sylvania

TOTAL NET LENGTH OF PROJECTS US 223 & SR 333	6720.2 LIN. FT. OR 1.272 MILES
TOTAL NET LENGTH OF WORK ON US 223 & SR 333	7155.5 LIN. FT. OR 1.355 MILES

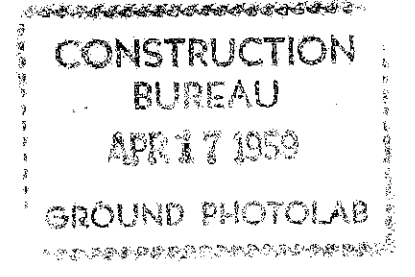
STANDARD CONSTRUCTION DRAWINGS

7-35	1-2-56
DR-1	1-3-55
RI-1	1-3-55
I-12	7-1-54
L-3	4-1-50
L-3A	4-1-50
I-12, 3, 4 & 5	2-20-45
I-B.C.B. No 3-A	5-1-52
I-B.M.H. No 1	5-1-52
I-B.M.H. No 1-A	1-3-55

SUPPLEMENTAL SPECIFICATIONS

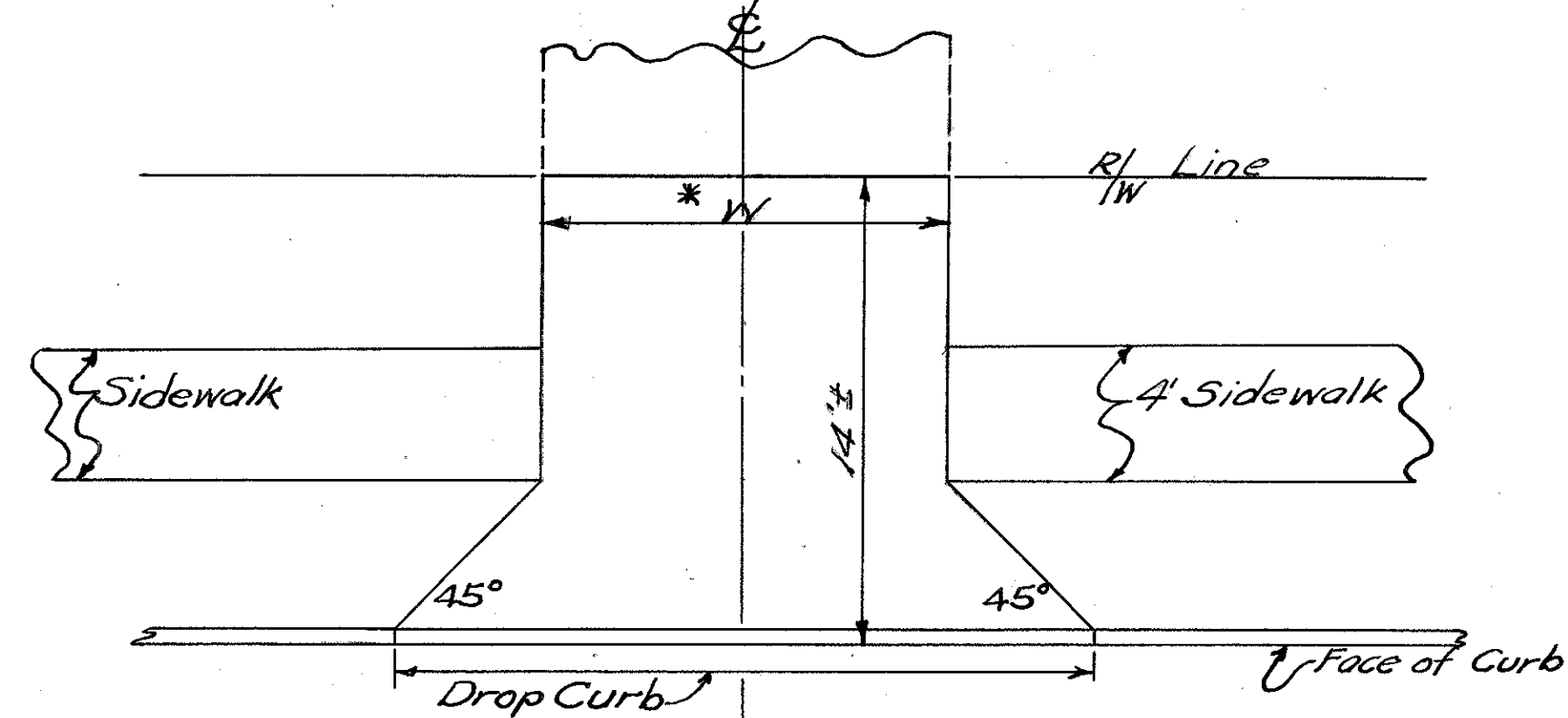
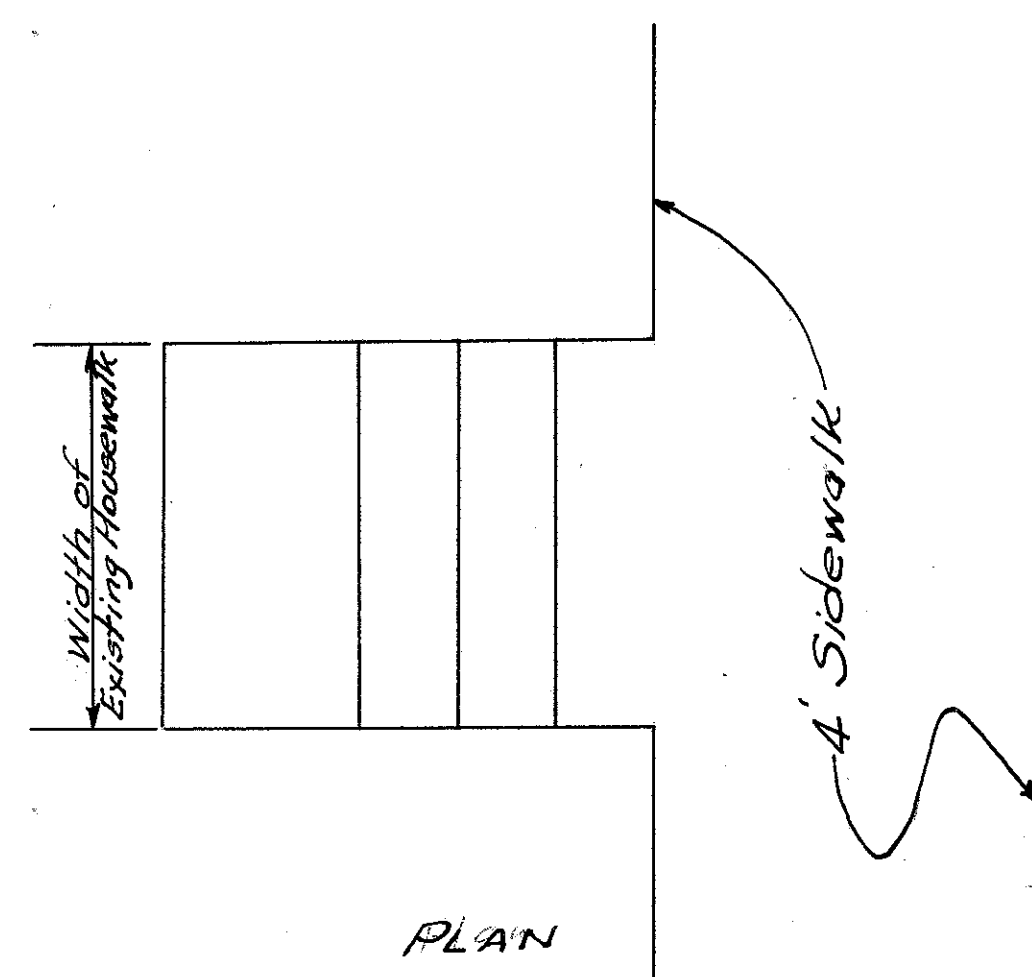
M-110.27	9-9-52
L-209.12	7-17-54

File No.	LUC-223-(0.02-0.21)
	LUC-333-(2.16-2.97)
Date of Letting	1956
Contract No.	

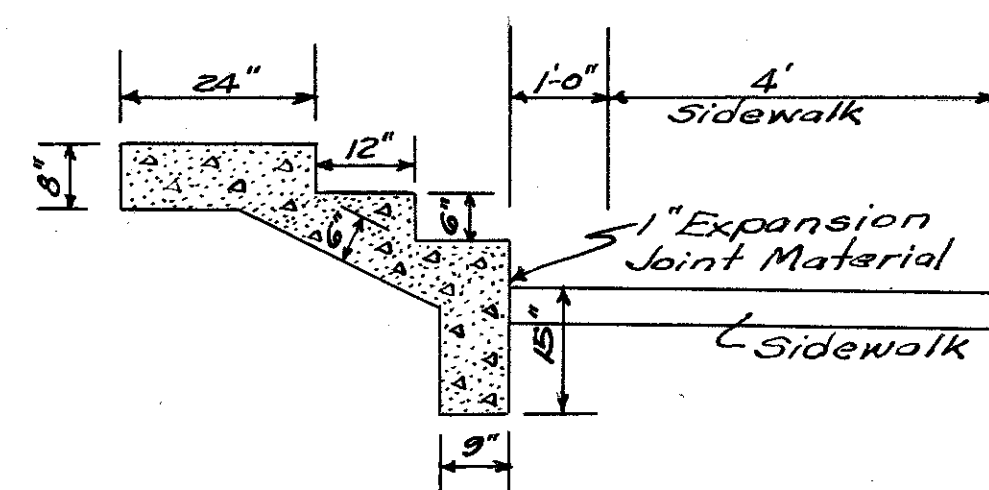


FCD, RD DIVISION	STATE	PROJECT	TYPE PLAN
2	OHIO		

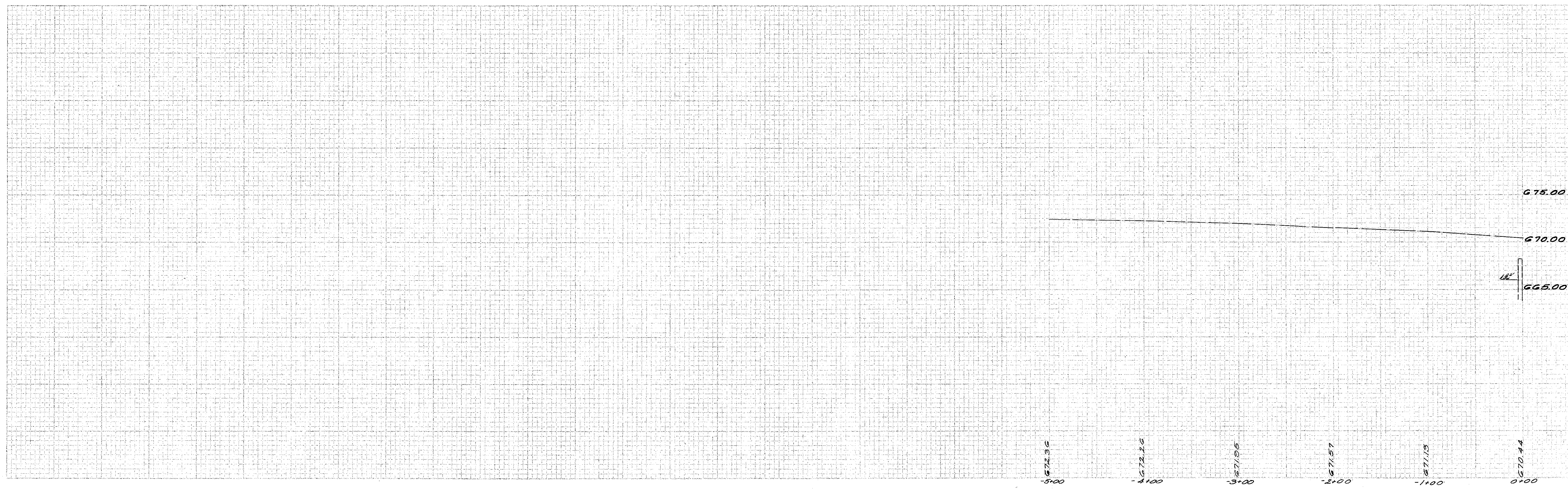
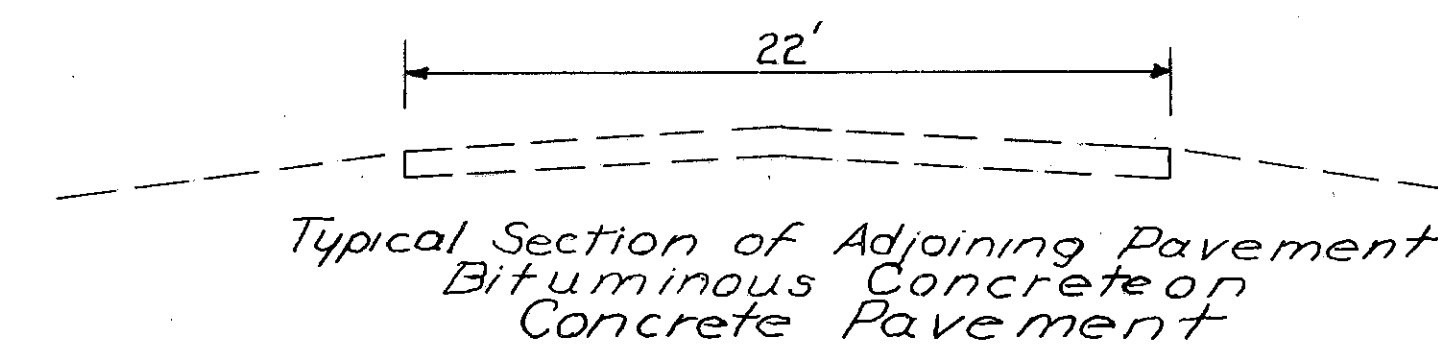
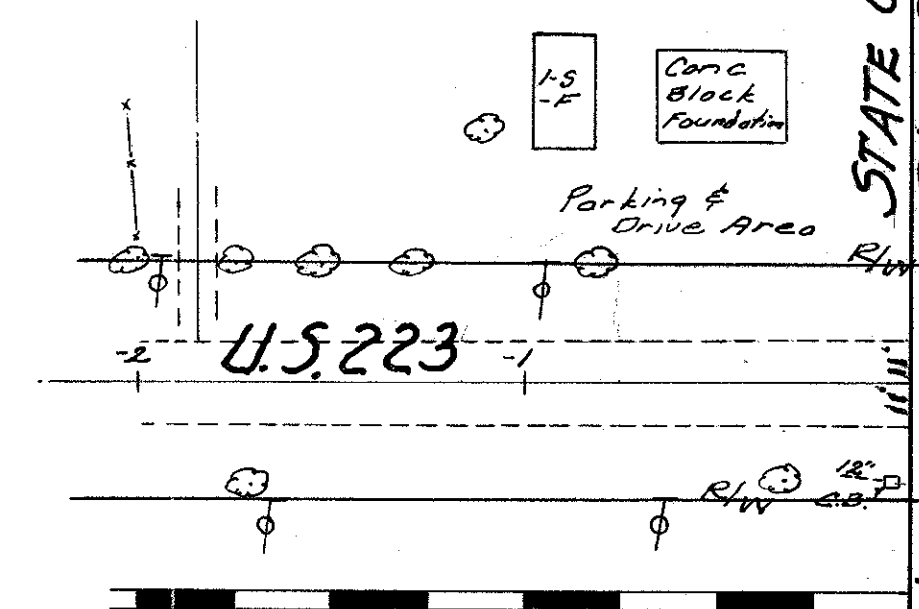
LUC-223-(0.02-0.21)
LUC-333-(2.16-2.97)



TYPICAL DRIVEWAY DETAIL
7" T-70 CONCRETE OR 2" T-35 ON 5" I-22
*For value of W, see drive table, sheet #5

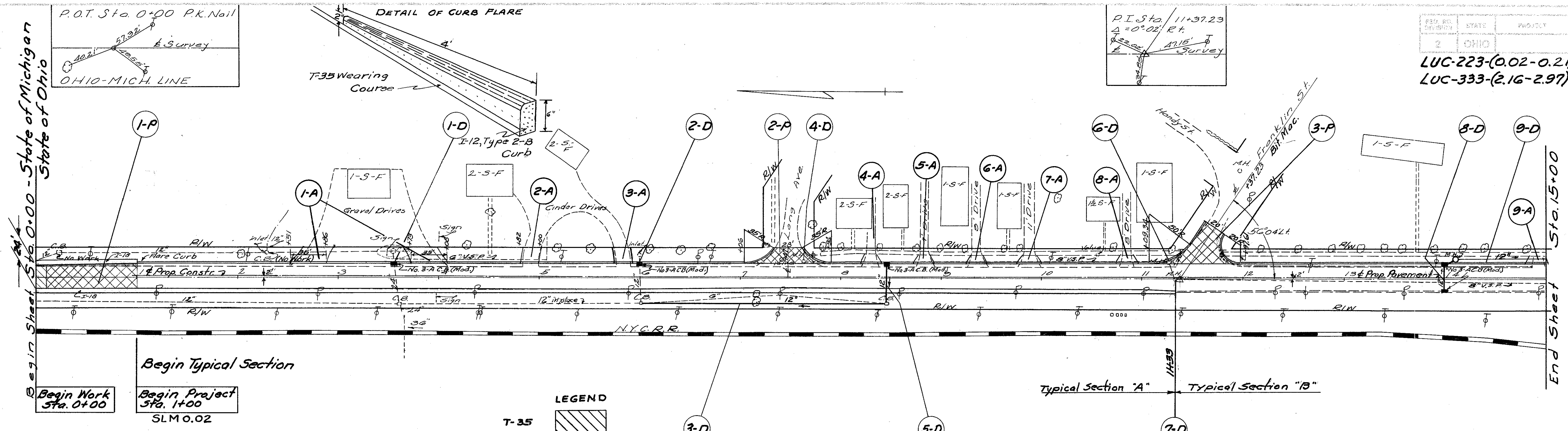


TYPICAL DETAIL OF CONCRETE STEPS
SCALE 1/2"=1'-0"



Sta. 5+00 To Sta. 0+00

End Sheet



Note: Center line of proposed construction is 2'-0" left and parallel to center line of Survey.

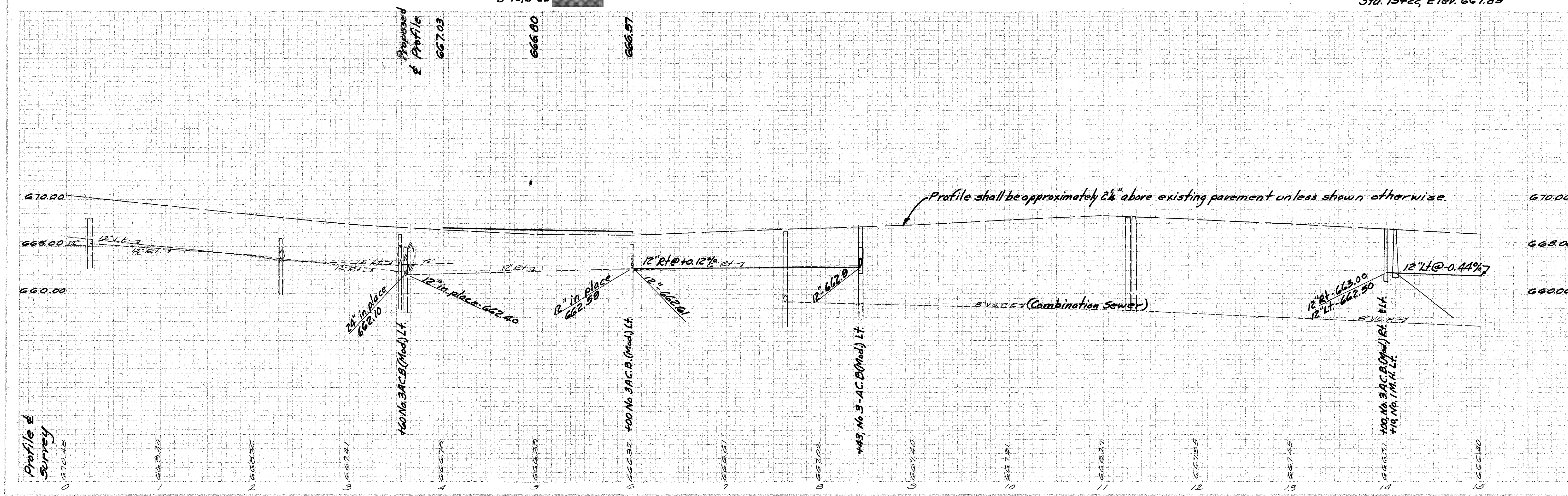
B.M. Nail in T.P. 35.5' Rt.
Sta. 2+38, Elev. 666.86

LEGEND

T-35	
T-35 & B-35	
T-35, B-35, B-70, I-22	

Typical Section "A" Typical Section "B"

B.M. West Bolt head on Fire plug 21' Left of Sta. 15+22, Elev. 667.89



Profile shall be approximately 2" above existing pavement unless shown otherwise.

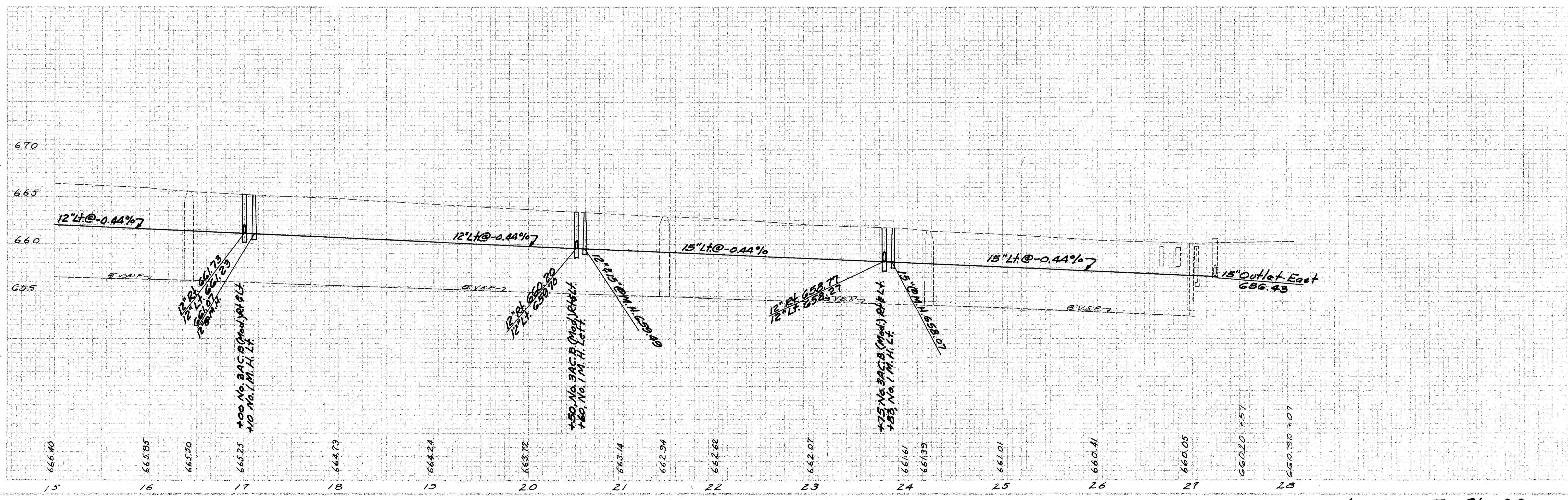
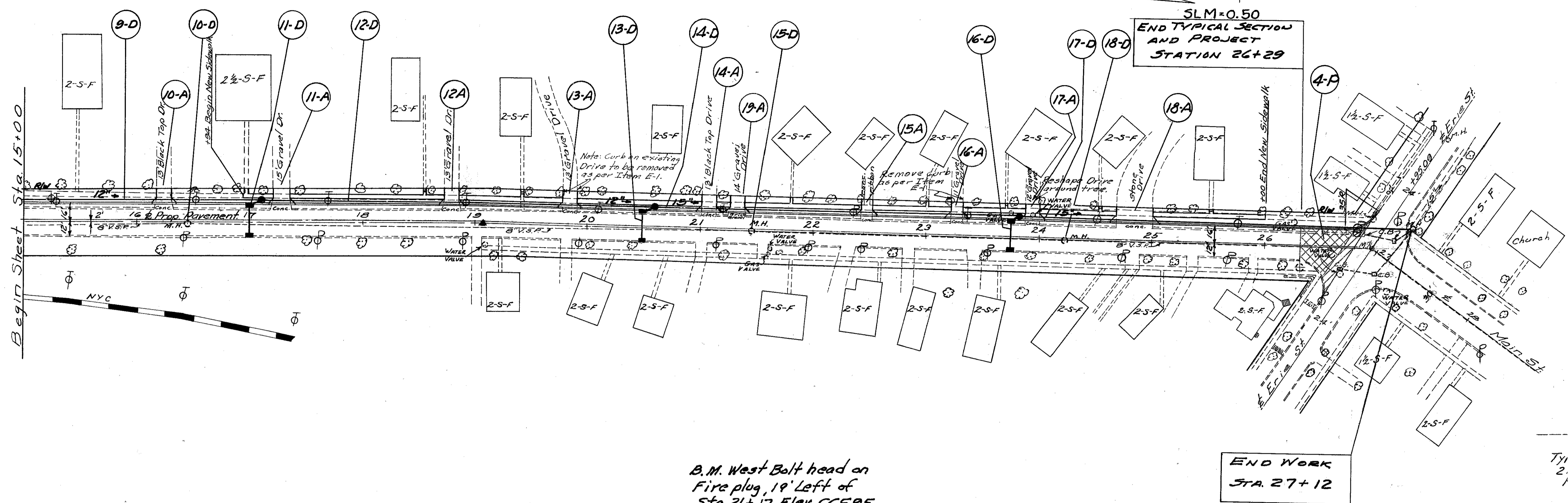
Sta. 0+00 To Sta. 15+00

P.I. = Sta. 19+06.25
▲ = 1°19' R.
R.K. Nail

Nick In M.H. Cover
Sta. 26+95.09
Survey

FED. RD. DIVISION	STATE	PROJECT	TYPE	PRICE
2	OHIO			

LUC-223-(0.02-0.21)
LUC-333-(2.16-2.97)



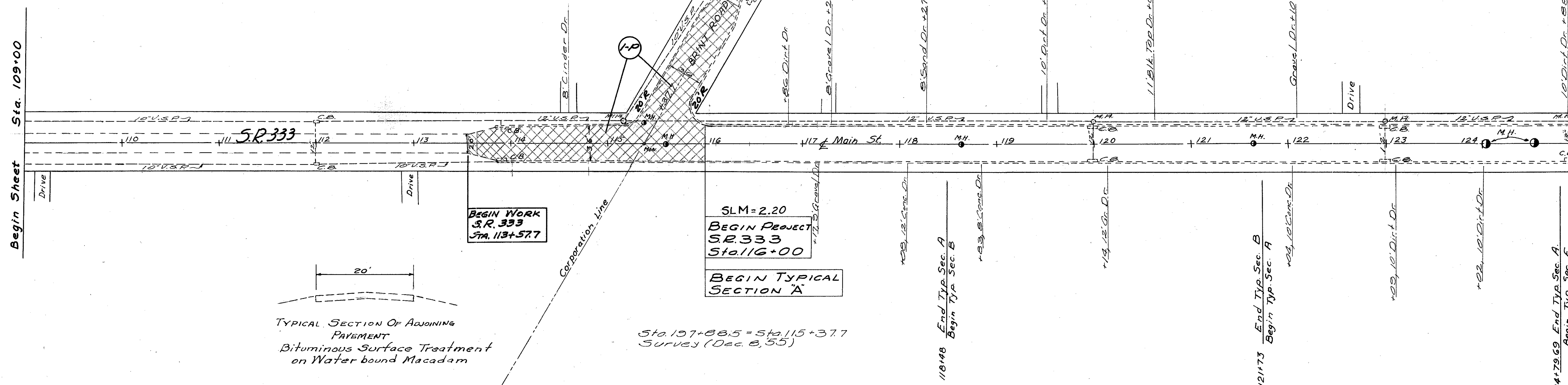
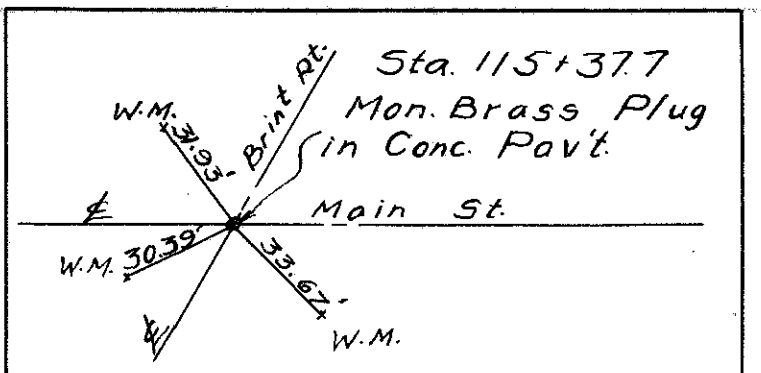
Sta. 15+00 To Sta. 28+07

MAKE FIELD CHECK
BEFORE INKING

FIG. NO.	SHEET	PROJECT	DATE
2	CHIC		

9
15

LUC-223-(0.02-0.21)
LUC-333-(2.16-2.97)



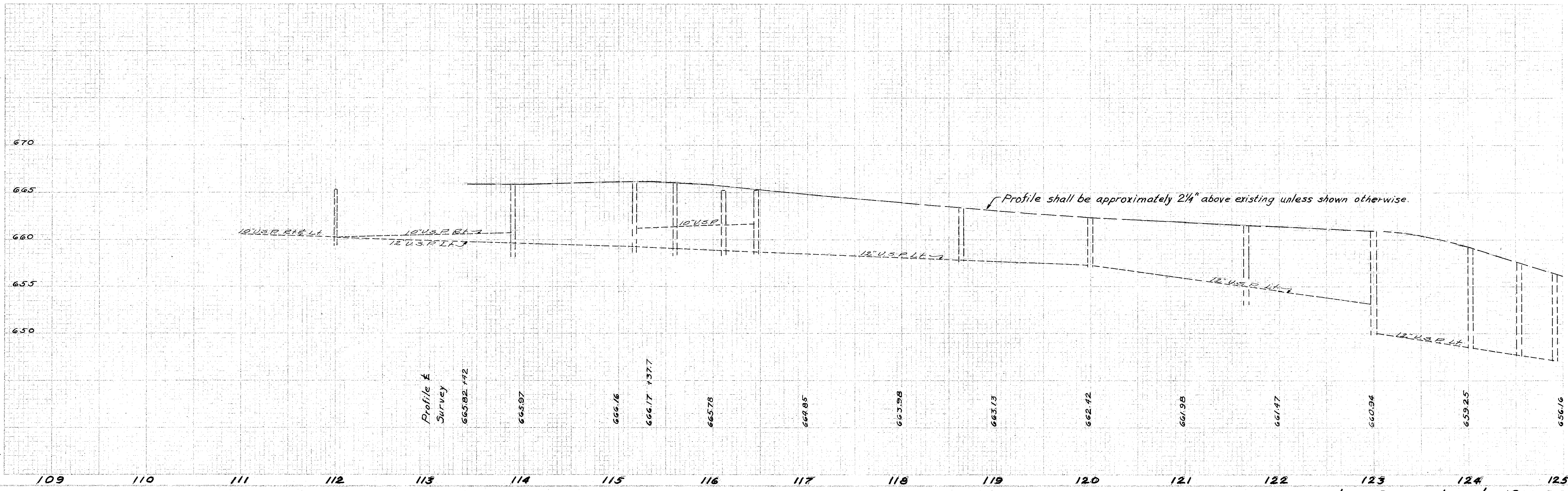
20'

TYPICAL SECTION OF ADJOINING
PAVEMENT
Bituminous Surface Treatment
on Water bound Macadam

BEGIN WORK
S.R. 333
Sta. 113+57.7

SLM=2.20
BEGIN PROJECT
S.R. 333
Sta. 116+00
BEGIN TYPICAL
SECTION A

Sta. 107+88.5 = Sta. 115+37.7
Survey (Dec. 8, 55)

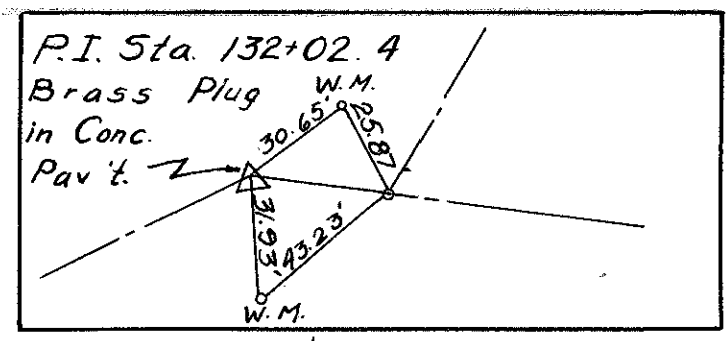
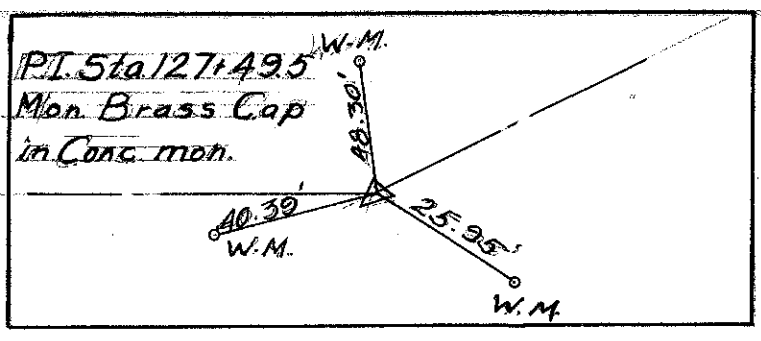


Sta. 109+00 to Sta. 125+00

FED. RD. DIVISION	STATE	PROJECT	TYPE	10
2	OHIO		LUNTS	15

LUC-223-(0.02-0.21)
LUC-333-(2.16-2.97)

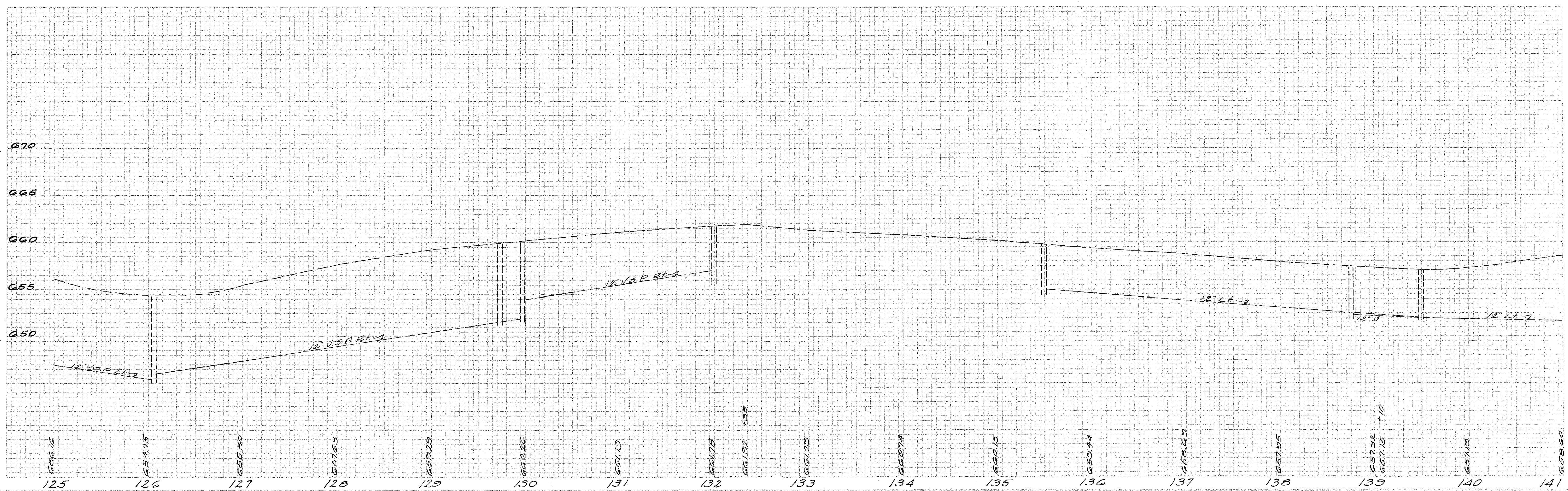
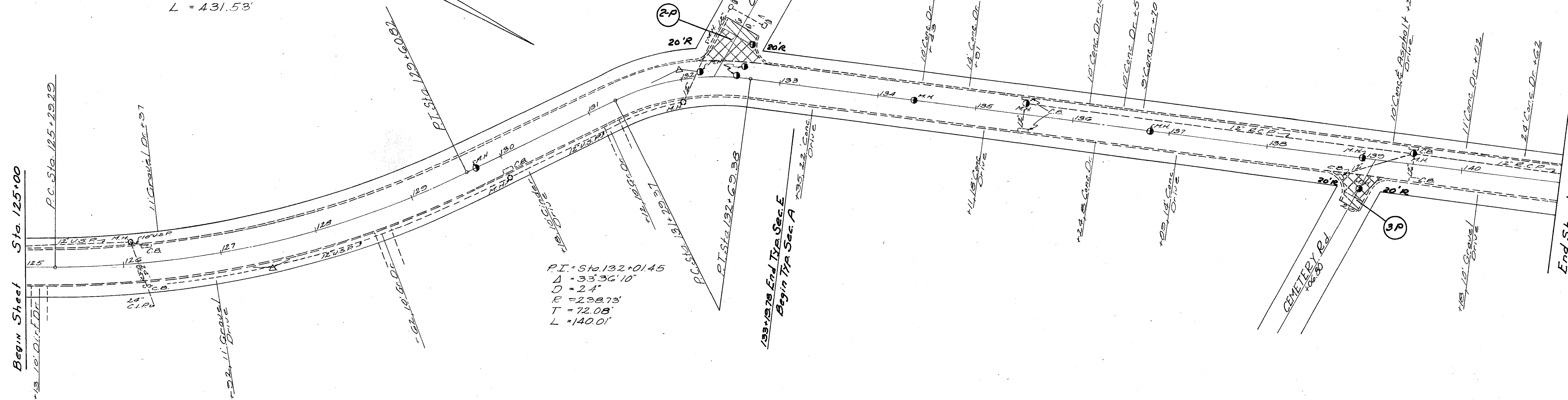
PI Sta. 127+48.8
 $\Delta = 25^\circ 53' 30''$
 $D = 6'$
 $R = 954.93'$
 $T = 219.51'$
 $L = 431.53'$



PI Sta. 132+01.45
 $\Delta = 33^\circ 36' 10''$
 $D = 24'$
 $R = 298.73'$
 $T = 72.08'$
 $L = 140.01'$

Begin Sheet Sta. 125+00

End Sheet Sta. 141+00

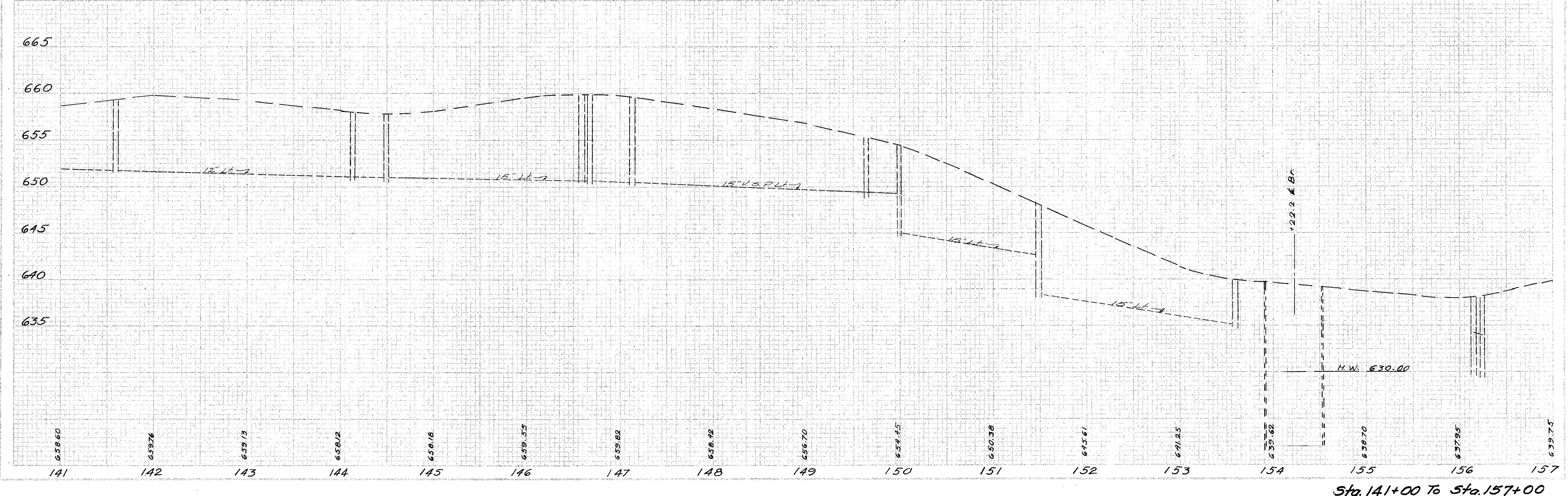
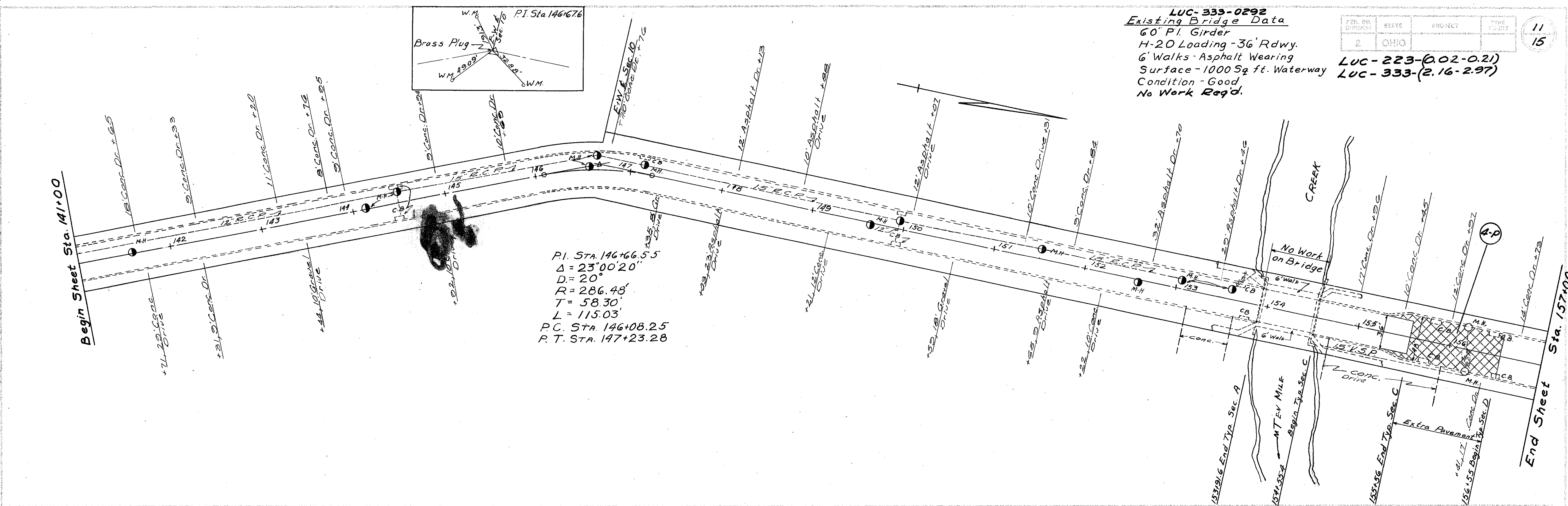


Sta. 125+00 to Sta. 141+00

LUC-333-0292
Existing Bridge Data
 60' P.I. Girder
 H-20 Loading - 36' Rdwy.
 6' Walks - Asphalt Wearing
 Surface - 1000 Sq. ft. Waterway
 Condition - Good
 No Work Req'd.

FED. DIST.	STATE	PROJECT	TYPE	SHEET NO.
2	OHIO			11
				15

LUC-223-(0.02-0.21)
 LUC-333-(2.16-2.97)

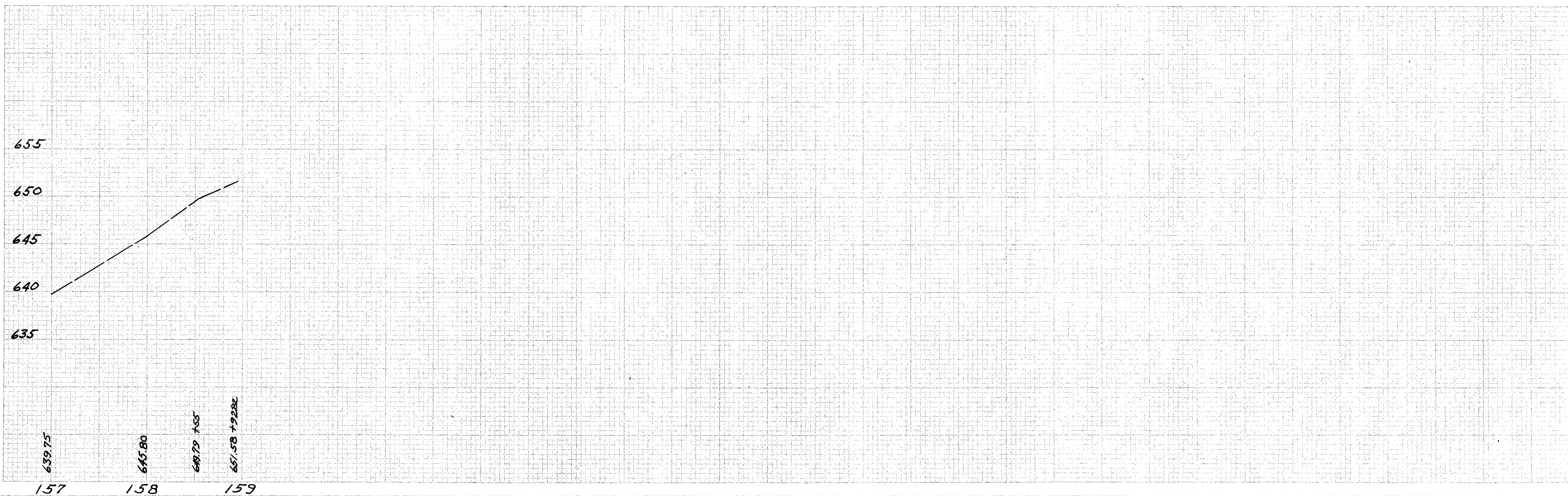
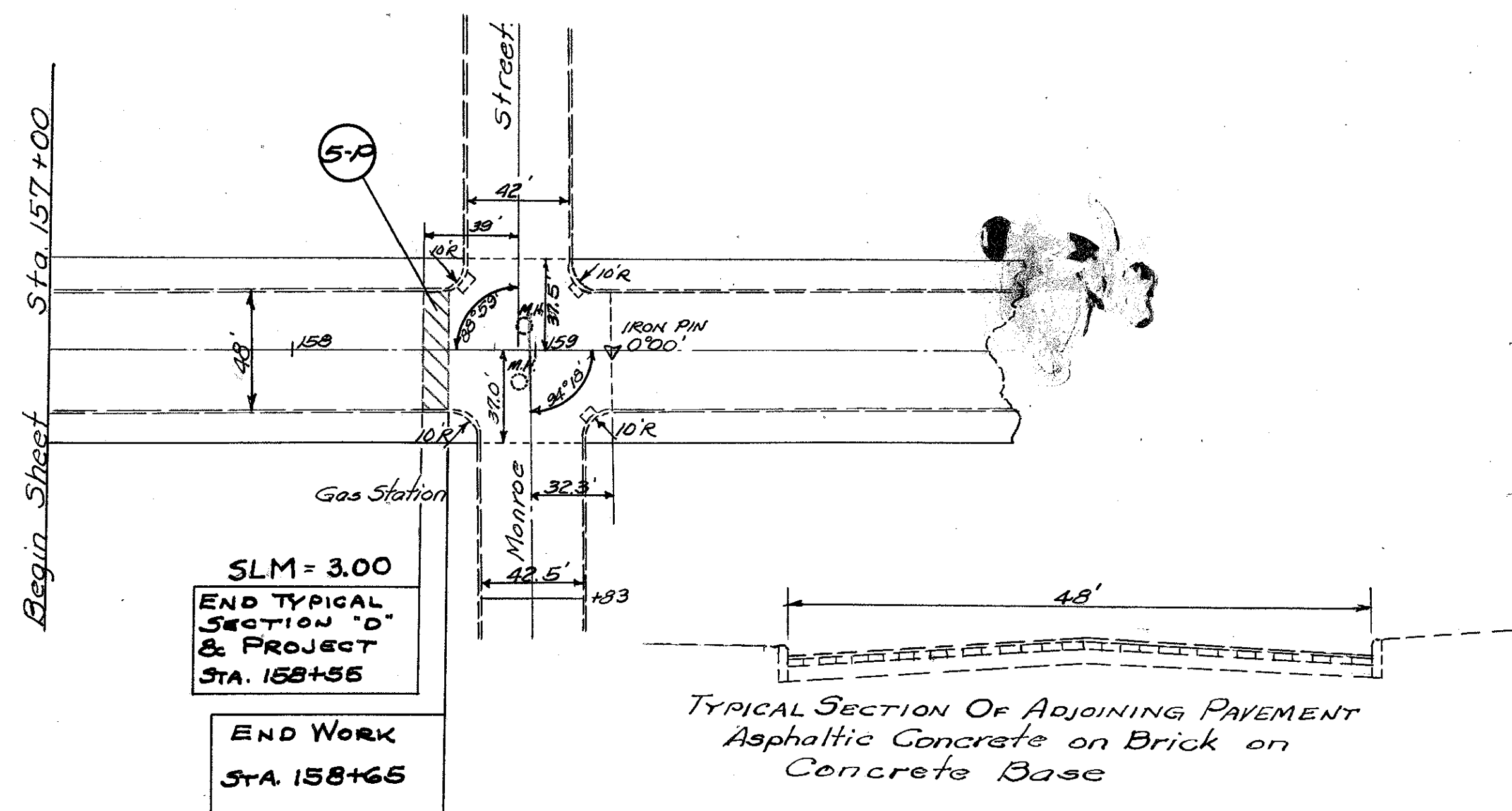


Sta. 141+00 To Sta. 157+00

PRO. NO. DIVISION	STATE	PROJECT	TIME PERIOD
2	OHIO		

12
15

LUC-223-(0.02-0.21)
LUC-333-(2.16-2.97)



Sta. 157+00 To Sta. 159+00