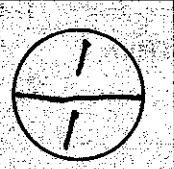
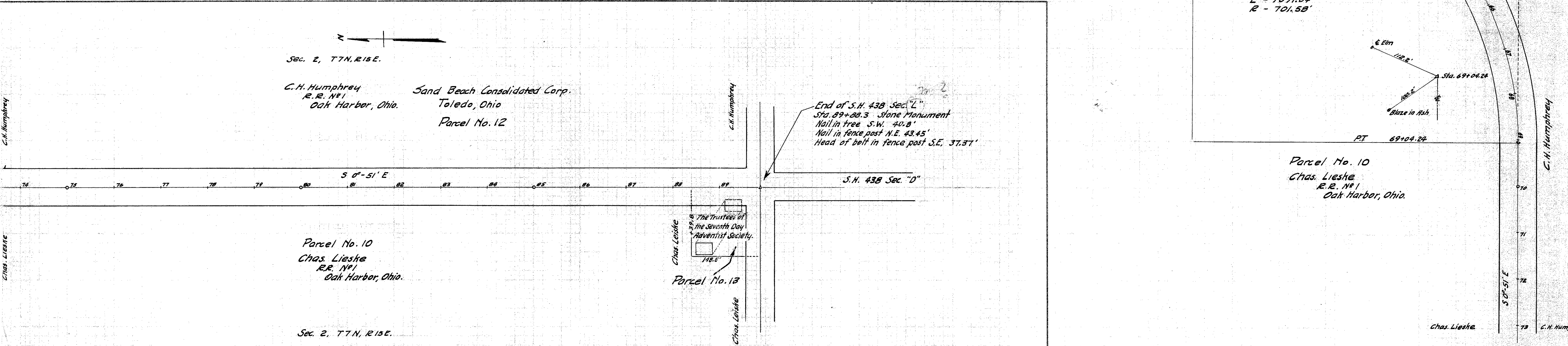
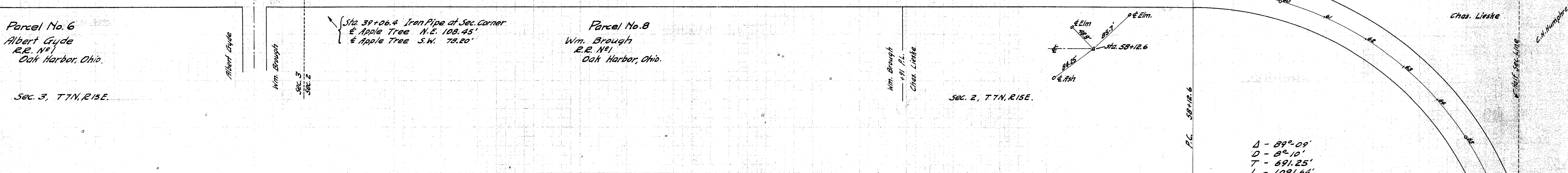
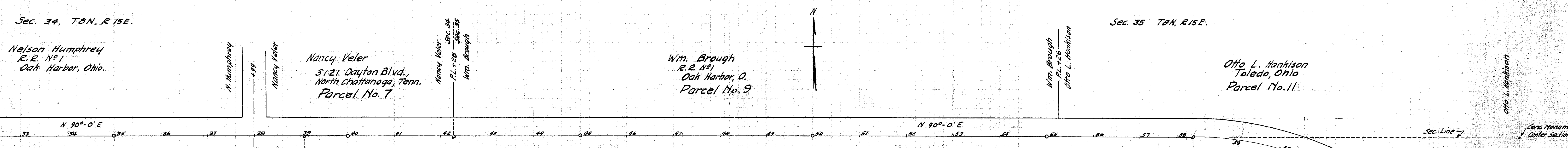
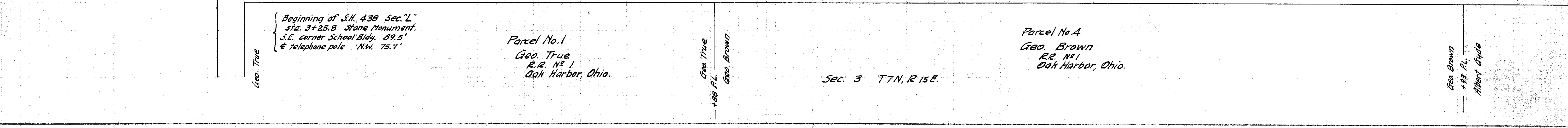
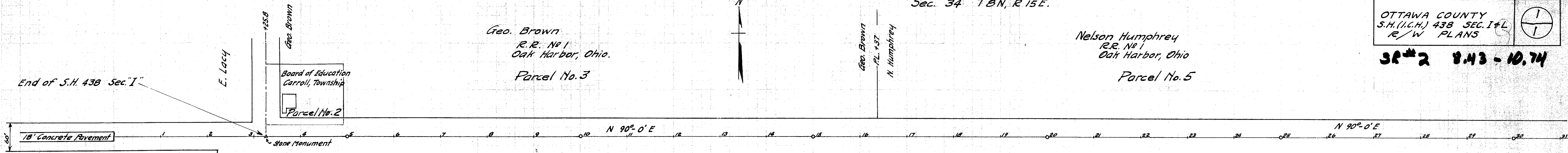


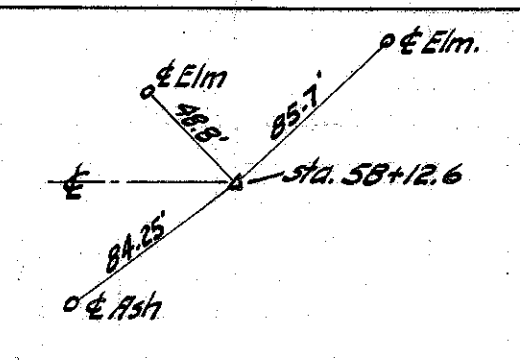
OTTAWA COUNTY  
S.H.(I.C.H.) 438 SEC. I+L  
R/W PLANS



SP#2 8.43-10.74

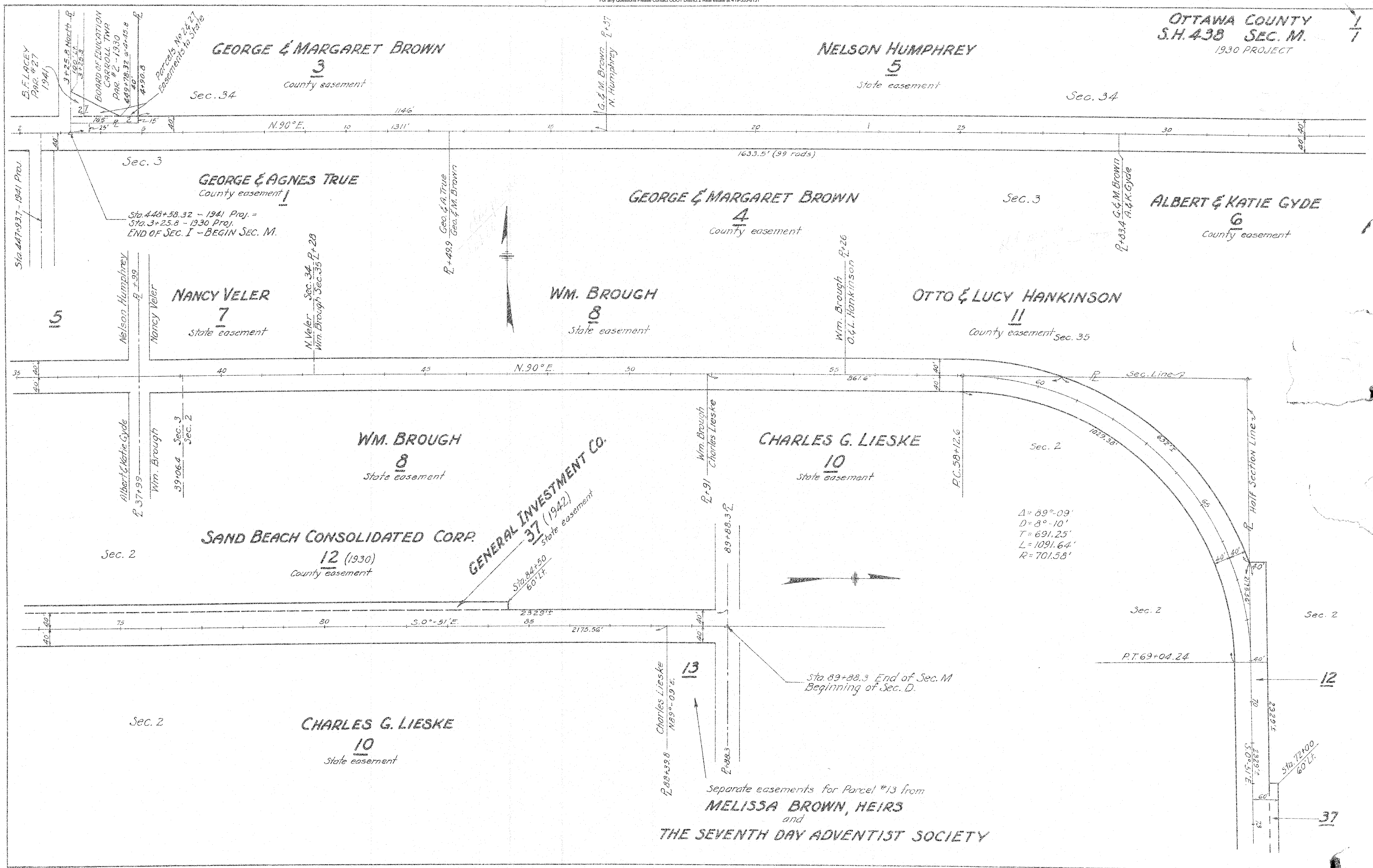


2-9 1# 2001-Y



Δ - 89°-09'  
D - 8°-10'  
T - 691.25'  
L - 1091.64'  
R - 701.58'

End of S.H. 438 Sec. L.  
Sta. 89+88.3 Stone Monument  
Nail in tree S.W. 40.8'  
Nail in fence post N.E. 43.45'  
Head of belt in fence post S.E. 37.37'



GEORGE & MARGARET BROWN  
3  
County easement  
Sec. 34

NELSON HUMPHREY  
5  
State easement  
Sec. 34

GEORGE & AGNES TRUE  
County easement  
1

GEORGE & MARGARET BROWN  
4  
County easement  
Sec. 3

ALBERT & KATIE GYDE  
6  
County easement

NANCY VELER  
7  
State easement

WM. BROUGH  
8  
State easement

OTTO & LUCY HANKINSON  
11  
County easement  
Sec. 35

WM. BROUGH  
8  
State easement

CHARLES G. LIESKE  
10  
State easement

SAND BEACH CONSOLIDATED CORP.  
12 (1930)  
County easement

GENERAL INVESTMENT CO.  
37 (1942)  
State easement

CHARLES G. LIESKE  
10  
State easement

13  
Charles Lieske  
N 89°-09' E  
P+98.3

Sta. 89+88.3 End of Sec. M  
Beginning of Sec. D.

Separate easements for Parcel #13 from  
MELISSA BROWN, HEIRS  
and  
THE SEVENTH DAY ADVENTIST SOCIETY

Δ = 89°-09'  
D = 8°-10'  
T = 691.25'  
L = 1091.64'  
R = 701.58'