

#4032

FED AID DIST. NO	STATE	FED AID PROJECT YEAR	FISCAL YEAR
10	OHIO	410-6	1932

SH. 438 SEC. F
 S.H. 279 SEC. B-1 B-2 PORT CLINTON (PT)
 OTTAWA COUNTY

STATE OF OHIO
 DEPARTMENT OF HIGHWAYS
BONO-PORT CLINTON ROAD
 SH. 438 SEC. F
BOWLING GREEN-PORT CLINTON ROAD
 SH. 279 SEC. B-1, B-2, PORT CLINTON (PART)
 OTTAWA COUNTY
 PORTAGE & ERIE TWPS. MAY 1932

The Standard Specifications of the State Of Ohio Department of Highways in force on date of contract will govern this improvement.
 I hereby approve these plans and declare that the making of this improvement will require the closing of traffic of the highway and that detours will be provided as shown on the plans and estimates.
 Necessary Right-of Way has been provided

Approved: Karl E. Wasselind
 Date: 7/5/32 Resident District Deputy Director

Approved: R. J. Nisda
 Date: 7-6-32 Resident Division Deputy Director

Approved: Edmund Hilty
 Date: 7/8/32 Chief Engineer
 Bureau of Construction

Approved: _____
 Date: _____ Chief Engineer
 Bureau of Maintenance

Approved: _____
 Date: _____ Chief Engineer
 Bureau of Bridges

Approved: H. P. Chapman
 Date: 7/9-32 Chief Engineer and
 First Assistant Director

Approved: J. W. Marshall
 Date: 7/7-32 Director of Highways

Recommended for Approval: _____
 Date: _____ District Engineer
 Bureau of Public Roads

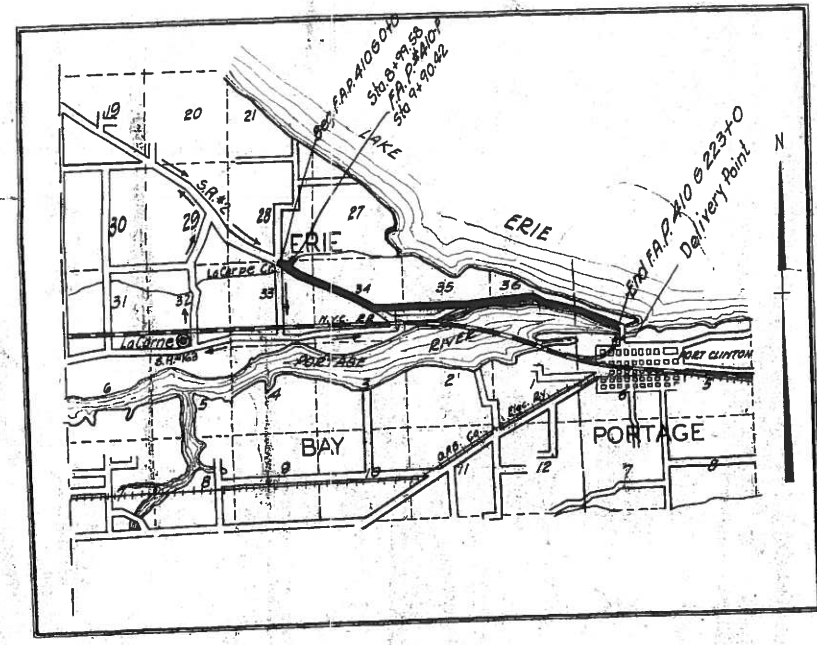
Recommended for Approval: _____
 Date: _____ Chief Engineer
 Bureau of Public Roads

Approved: _____
 Date: _____ Chief of Bureau

CONSTRUCTION
 BUREAU
 JUL 7 1932
 GROUND PHOTOLAB

CONVENTIONAL SIGNS

State Line	-----
County Line	-----
Township Line	-----
Section Line	-----
Property Line Not Fenced	-----
Center Line	-----
City or Village Line	-----
Fence	TTTTTT
Telephone or Telegraph	-----
Steam Railroad	-----
Electric Line	-----
Guard Rail	-----
Drain Pipe	-----



LOCATION PLAN
 SCALE OF MILES
 PORTION TO BE IMPROVED
 DETOURS SHOWN THUS
 IMPROVED ROADS

We the Commissioners of Ottawa County, hereby approve these plans and certify that the right-of-way 80 ft wide is available for the construction, maintenance and repair of the above highway.

Edwin H. Tank
Arthur C. Busch
Wm. Miller

Date: July 5, 1932 County Commissioners

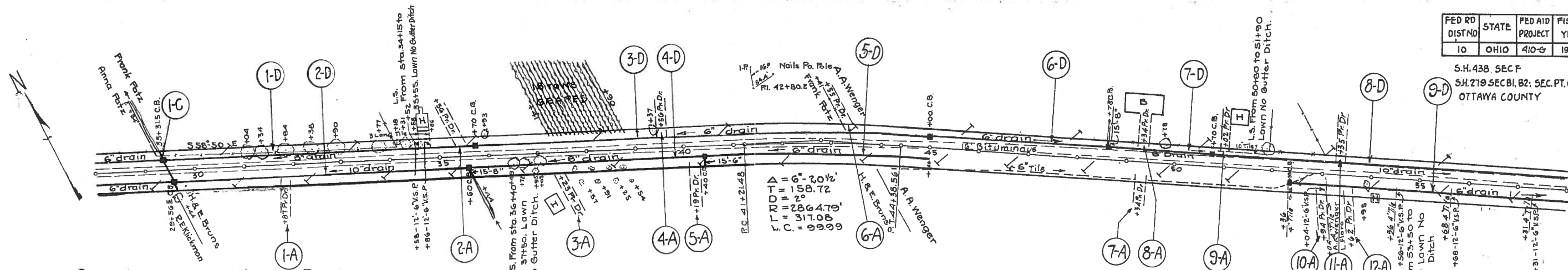
SCALES

PLAN	1"=100'
PROFILE (VERTICAL)	1"=5'
PROFILE (HORIZONTAL)	1"=100'
CROSS SECTIONS	1"=5'

INDEX OF SHEETS

TITLE PAGE	1
TYPICAL CROSS SECTION	243
PLANS AND PROFILE	4-11
CROSS SECTIONS	12-32
STRUCTURAL PLANS	33-35
CURVE TABLES	36
SUMMARY SHEET	38
WIDENING DETAILS	37
SUPPLEMENTARY DRAWINGS	95, 96, 98, 100, 123, 300, 305

S.H. 438, SEC F
S.H. 279 SEC B1, B2; SEC PT. CLINTON (PART)
OTTAWA COUNTY



PRIVATE DRIVE APPROACHES (A)

Sheet No.	Item No.	Sta	Rt or Lt	Place	Corr	Plin.ft	Cu Yds
5	1-A	31+87	Rt				6
5	2-A	35+56	Lt				6
5	3-A	37+23	Rt				6
5	4-A	34+56	Lt				6
5	5-A	40+19	Rt				6
5	6-A	43+55	Lt				6
5	7-A	49+34	Rt				6
5	8-A	49+34	Lt				6
5	9-A	51+02	Lt				6
5	10-A	52+94	Rt				6
5	11-A	53+35	Lt				6
5	12-A	53+62	Rt				6
Total							72

TILE CONNECTIONS

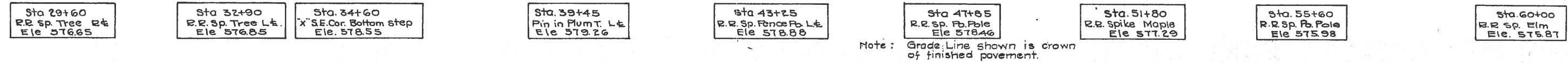
Sheet No.	Sta	Side	Lin.ft
5	34+88	Lt	12
5	34+86	Lt	12
5	53+04	Rt	12
5	54+56	Rt	12
5	55+68	Rt	12
5	57+31	Rt	12
Total			72

CULVERTS (C)

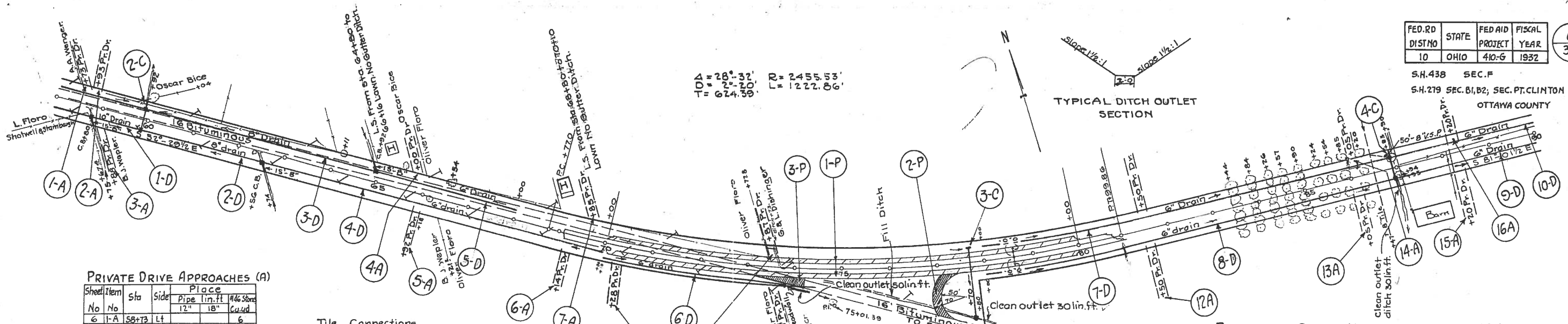
Sheet No.	Item No.	Sta	New Work			Detail Sheet
			Lin. Ft.	Exc	Catch Basins	
5	1-C	29+44	82	20	2	33
Total			82	20	2	

PLACING SIDE UNDERDRAINS (D)

Sheet No.	Item No.	Station	Side	Pipe sizes and			Head	Culvert	Reint	#2 C.B.	Detail Sheet	Remarks	
				6"	8"	10"							
5	1-D	29+23	Lt	63.5						1	34	C.B. 35+70	
5	2-D	29+53	Rt	60.5						1	34	C.B. 35+60	
5	3-D	35+11	Lt	92.0						1	34	C.B. 45+00	
5	4-D	35+64	Rt	15	47.0					1	34	C.B. 40+40	
5	5-D	40+41	Rt	45.8									
5	6-D	45+01	Lt	371	15					1	34	C.B. 48+73	
5	7-D	48+74	Lt	195						1	35	C.B. 50+70	
5	8-D	50+11	Rt		92.0								
5	9-D	52+38	Rt	63.9	15					2	35	C.B. 52+39 - C.B. 58+80	
TOTALS				2416	334.5	1521.5					8		



Station	Pipe Grade L.S.	Pipe Grade R.S.	Exc. Emb. + 20% Borrow	Cu. Yds.
28	572.74	572.44		
29	572.78	572.48		
30	573.0	573.0		
31	573.1	573.1		
32	573.2	573.2		
33	573.3	573.3		
34	573.4	573.4		
35	573.5	573.5		
36	573.6	573.6		
37	573.7	573.7		
38	573.8	573.8		
39	573.9	573.9		
40	574.0	574.0		
41	574.1	574.1		
42	574.2	574.2		
43	574.3	574.3		
44	574.4	574.4		
45	574.5	574.5		
46	574.6	574.6		
47	574.7	574.7		
48	574.8	574.8		
49	574.9	574.9		
50	575.0	575.0		
51	575.1	575.1		
52	575.2	575.2		
53	575.3	575.3		
54	575.4	575.4		
55	575.5	575.5		
56	575.6	575.6		
57	575.7	575.7		
58	575.8	575.8		
59	575.9	575.9		
60	576.0	576.0		
61	576.1	576.1		
62	576.2	576.2		
63	576.3	576.3		
64	576.4	576.4		
65	576.5	576.5		
66	576.6	576.6		
67	576.7	576.7		
68	576.8	576.8		
69	576.9	576.9		
70	577.0	577.0		
71	577.1	577.1		
72	577.2	577.2		
73	577.3	577.3		
74	577.4	577.4		
75	577.5	577.5		
76	577.6	577.6		
77	577.7	577.7		
78	577.8	577.8		
79	577.9	577.9		
80	578.0	578.0		
81	578.1	578.1		
82	578.2	578.2		
83	578.3	578.3		
84	578.4	578.4		
85	578.5	578.5		
86	578.6	578.6		
87	578.7	578.7		
88	578.8	578.8		
89	578.9	578.9		
90	579.0	579.0		
91	579.1	579.1		
92	579.2	579.2		
93	579.3	579.3		
94	579.4	579.4		
95	579.5	579.5		
96	579.6	579.6		
97	579.7	579.7		
98	579.8	579.8		
99	579.9	579.9		
100	580.0	580.0		



PRIVATE DRIVE APPROACHES (A)

Sheet No	Item No	Sta	Side	Place	14 1/2" 18" 24" 30"
6	1-A	58+13	Lt		6
6	2-A	58+13	Lt		6
6	3-A	58+08	Rt		6
6	4-A	66+00	Lt		6
6	5-A	65+92	Rt		6
6	6-A	69+14	Rt		6
6	7-A	69+18	Lt		6
6	8-A	70+28	Rt		6
6	9-A	73+81	Lt	20	6
6	10-A	73+11	Rt		6
6	11-A	81+50	Lt		6
6	12-A	81+50	Rt		6
6	13-A	86+05	Rt		6
6	14-A	86+05	Lt		6
6	15-A	88+20	Rt		6
6	16-A	88+20	Lt		6
Total					96

Tile Connections

Sheet No	Station	Side	lin. ft	lin. ft
6	86+47	left	50	
				50

CULVERTS (C)

Sheet No	Item No	Sta	New Work				Detail Sheet
			Lin. Ft.	Head Coud	Exc. Coud	Catch Basins	
6	2-C	59+92	60.5		21	2	33
6	3-C	77+70	169.0		68	1	33
6	4-C	86+90	76		5	2	33
Total			2295.76	1	1.0	94	5

EXTRA PAVEMENT (P)

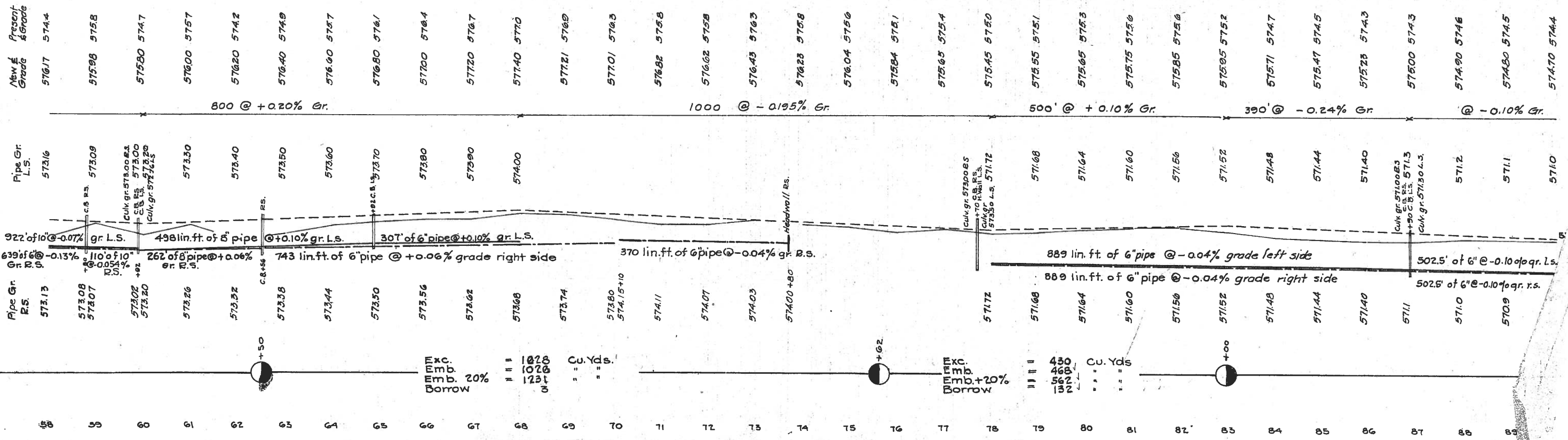
Sheet No	Item No	Station From To	Conc. Sq. yd	1st Base Course	2nd Base Course	Top Course	Detail Sheet
6	1-P	70+00 80+00	2206.67				
6	2-P	76+85 77+55	233.4d	233.4d	222.4d		36
6	3-P	73+20 74+30	135	135	128		36
Totals			2265.11	368	368	350	

PLACING SIDE UNDERDRAINS (D)

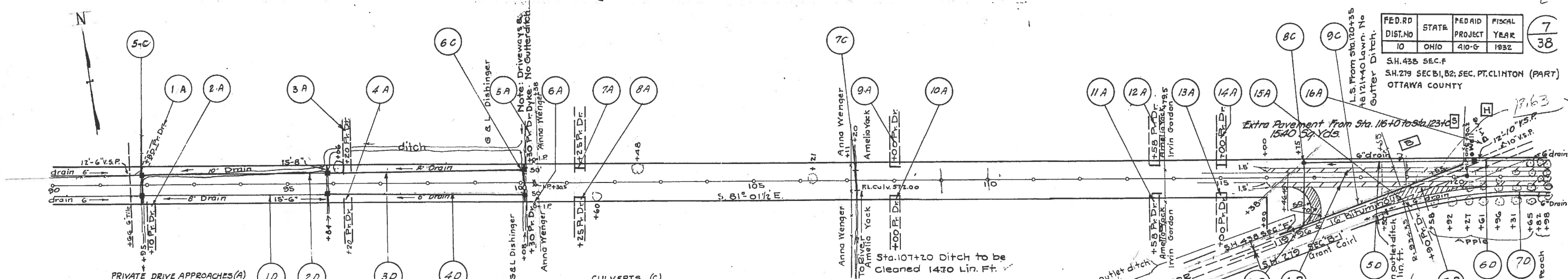
Sheet No	Item No	Station From To	side	Pipes and lin. ft		Head Walls	Coud	Reinf. Sheet	#2 C.B. Conc. Pipe	Detail Sheet	Remarks
				6" 8" 10"	lin. ft						
6	1-D	58+81 59+91	Rt		110						
6	2-D	59+93 62+51	Rt	217							C.B. 62+56
6	3-D	59+93 64+93	Lt	515							C.B. 64+92
6	4-D	62+51 70+00	Rt	743							
6	5-D	64+93 68+00	Lt	307							
6	6-D	70+10 73+80	Rt	370							35 Headwall 73+80
6	7-D	78+00 86+91	Lt	889							
6	8-D	78+00 86+91	Rt	889							
6	9-D	86+91 91+96	Rt	502.5							
6	10-D	86+91 91+96	Lt	502.5							
TOTAL				4705	180	1100					

Sta. 60+00 R.R. spike Elm Ele. 575.87
 Sta. 63+40 R.R. sp. P.B. Ele. 576.23
 Sta. 65+85 R.R. sp. Hick. L.F. Ele. 577.31
 Sta. 70+20 R.R. sp. Fence Post Ele. 576.85
 Sta. 74+80 R.R. sp. Cottonwood R.E. Ele. 576.71
 Sta. 79+60 R.R. sp. Apple R.E. Ele. 576.04
 Sta. 83+40 R.R. sp. Apple R.E. Ele. 576.03
 Sta. 86+20 R.R. sp. Apple R.E. Ele. 575.15
 Sta. 89+90 R.R. sp. Oak L.F. Ele. 575.41

Note: Grade line shown is crown of finished pavement.



Sta	Exc. Coud	Emb. +20% Borrow	Cu. Yds.
68	1028	1231	
70			
75			
80	430	562	
82			
83			
85			
86			
87			
88			
89			



PRIVATE DRIVE APPROACHES (A)

Sheet No.	Item No.	Sta.	Rt. or Lt.	Place	Pipe line ft.	12"	18"	24"	30"	36"	42"	48"	54"	60"	66"	72"	78"	84"	90"	96"	102"	108"	114"	120"		
7	1-A	91+80	Lt.																							
7	2-A	92+10	Rt.																							
7	3-A	96+20	Lt.																							
7	4-A	96+20	Rt.																							
7	5-A	100+30	Lt.																							
7	6-A	100+30	Rt.																							
7	7-A	104+25	Lt.	20																						
7	8-A	104+25	Rt.																							
7	9-A	108+00	Lt.																							
7	10-A	108+00	Rt.																							
7	11-A	113+58	Rt.																							
7	12-A	113+58	Lt.																							
7	13-A	115+00	Rt.																							
7	14-A	115+00	Lt.	20																						
7	15-A	118+30	Rt.																							
7	16-A	120+	Lt.																							
TOTALS																										

TILE CONNECTIONS

Sheet No.	Station	Side	Lin Ft.
7	91+66	Lt.	12
7	Total		12

CULVERTS (C)

NEW WORK		LIN. FT.		HEAD WALLS		CATCH BASINS		CONC. INCH		PIPE		EXC. CUYD		DETAIL SHEET	
Sheet No.	Item No.	12"	18"	#2 Std.	#2 Mod.	#2	#2	1/2"	3/4"	6"	8"	10"	12"		
7	5-C	0/185												8	33
7	6-C	100+08				2								6	33
7	7-C	107+20		46						20				7	33
7	8-C	116+75		144.5				1						62	33
7	9-C	119+55		41.4						10	1/2/12/1			180	34
TOTALS		558.5	123	61		3		3		30				163	

EXTRA PAVEMENT (P)

Sheet No.	Item No.	Station	Conc. Pav.	1st Base Course	2nd Base Course	Top Course	Detail Sheet
7	3-P	116+40	117+16	232 cu yd	232 cu yd	221 cu yd	36
7	4-P	116+00	123+00	1540 cu yd			36
7	5-P	118+50	121+48	487 cu yd	487 cu yd	464 cu yd	36
7	Total		1540	119 cu yd		685 cu yd	

PLACING SIDE UNDERDRAINS (D)

Sheet No.	Item No.	Station	Side	Pipe Size	Head	Exc. Cu. Yds.	Remarks	Detail Sheet
7	1-D	91+66	Rt.	6"	15	386.5	C.B. 95+84	35
7	2-D	91+66	Lt.	6"	15	386.5	C.B. 95+84	35
7	3-D	95+85	Lt.	6"	15	422.0		
7	4-D	95+85	Rt.	6"	15	422.0		
7	5-D	116+16	Lt.	6"	15	352.5		
7	6-D	120+35	Lt.	6"	15	372.5	C.B. 124+00	35
7	7-D	118+50	Rt.	6"	15	518.0	H.W. 118+50 C.B. 124+00	35
TOTALS						1306.0		



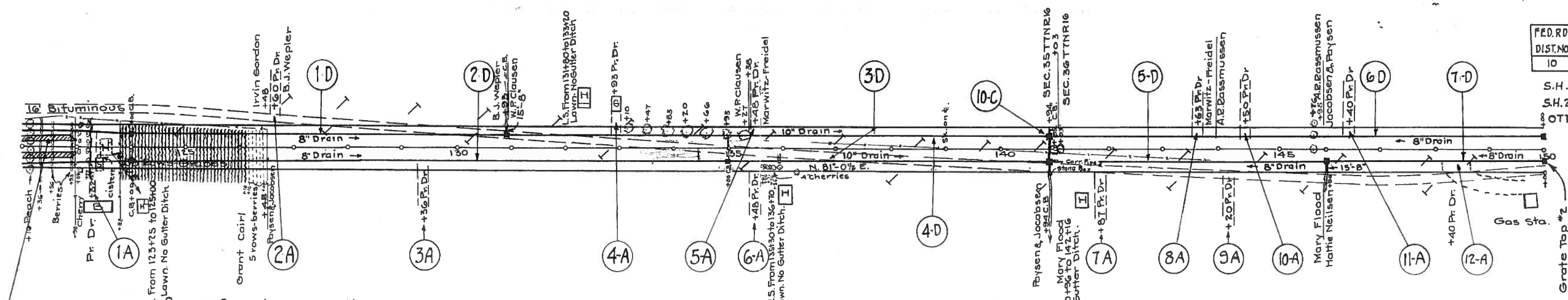
Note: Grade line shown is crown of finished pavement.

Station	Present Elev.	New Elev.	Grade	Exc. Cu. Yds.	Emb. +20%	Borrow
90	574.4	574.35	200' @ -0.10% Gr.			
91	574.8	574.60				
92	573.1	574.51	300' @ +0.19% grade			
93	574.2	574.70				
94	574.3	574.89				
95	574.3	573.08	300' @ +0.484% gr.			
96	574.5	573.56				
97	573.0	576.05				
98	574.1	576.53	400' of Vertical Curve			
99	574.3	576.74				
100	574.5	576.89				
101	574.4	576.98				
102	574.3	577.01				
103	573.5	576.96	300' @ -0.494% grade			
104	573.0	576.88				
105	573.0	576.72				
106	573.0	576.51				
107	573.0	576.02				
108	573.0	575.52				
109	573.0	575.03				
110	573.0	574.03	183' @ Level Grade			
111	573.0	573.03				
112	573.0	573.03				
113	574.4	575.03				
114	574.6	575.03				
115	574.8	575.10	317' @ +0.40% Grade			
116	575.2	575.50				
117	574.8	575.90				
118	575.2	576.30				
119	575.7	576.44	600' @ +0.144% Grade			
120	576.2	576.59				
121	576.2	576.73				
122	578.1	576.88				
123	577.4	577.02				
124	577.3	577.17				

Exc. = 4998
Emb. +20% = 4551
Borrow = 5461
Total = 463

FED. RD DIST. NO	STATE	FED. AID PROJECT	FISCAL YEAR	8 38
10	OHIO	410-G	1932	
S.H. 438 SEC. F				

S.H. 279 SEC. B1, B2, SEC. PT. CLINTON (PART)
OTTAWA COUNTY



PRIVATE DRIVE APPROACHES (A)

Sheet No	Item No	Sta	Rt or Lt	Place		# of Stone	Cu. Yds.
				Corr. L.P.	lin. ft.		
1-A	123+32	RT				6	
2-A	126+60	LT				6	
3-A	129+36	RT				6	
4-A	132+93	LT				6	
5-A	135+48	LT				6	
6-A	138+48	RT				6	
7-A	141+87	RT				6	
8-A	143+63	LT				6	
9-A	144+20	RT				6	
10-A	144+50	LT				6	
11-A	146+40	LT				6	
12-A	146+40	RT				18	
Σ	Total					84	

CULVERTS (C)

Sheet No	Item No	Sta	New Work		Exc. Cu. yd.	Catch Basins	Head Walls	Detail sheet
			Lin. Ft.	12" 18"				
8	10-C	140+94	15.5	60.5	60	2		34
Σ	Totals		15.5	60.5	60	2		

PLACING SIDE UNDERDRAINS (D)

Sheet No	Item No	Station	Side	New		Work		Detail sheet	Remarks
				lin. ft.	Head Walls	Cu. Yd.	#2 C.B. Conc. Top		
8	1-D	124+01	LT	706			1	35	C.B. 130+93
	2-D	124+01	RT	1098			1	35	C.B. 135+00
	3-D	135+01	RT	592				35	
	4-D	130+94	LT	299				35	
	5-D	140+95	RT	514			1	35	C.B. 146+00
	6-D	140+95	LT	904			1	35	C.B. 150+00
	7-D	146+01	RT	398			1	35	Grate top C.B. 150+00
Σ	Totals			3629	1591		4		

Sta. 123+70
R.R. Sp. Tel. P.O. L.F.
Elev. 577.40

Sta. 127+80
R.R. Sp. Tel. P.O. L.F.
Elev. 577.54

Sta. 131+80
R.R. Sp. Tel. P.O. L.F.
Elev. 576.54

Sta. 136+25
R.R. Sp. Willow R.F.
Elev. 577.95

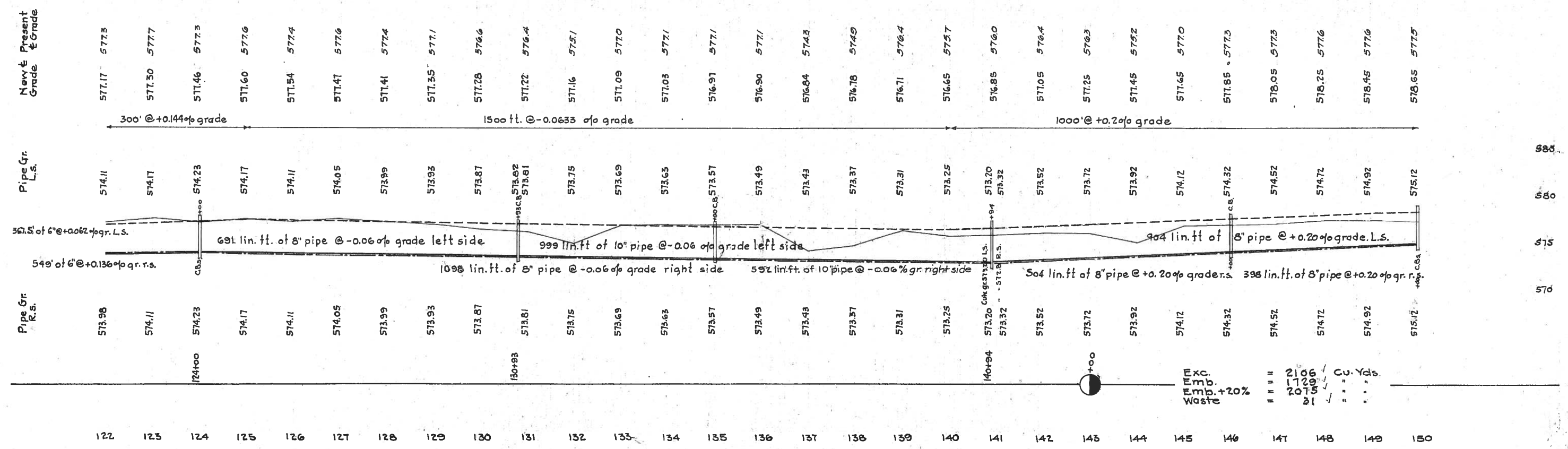
Sta. 140+80
R.R. Sp. P.O. R.F.
Elev. 577.91

Sta. 143+20
R.R. Sp. P.O. R.F.
Elev. 576.23

Sta. 146+0
R.R. Sp. P.O. R.F.
Elev. 578.28

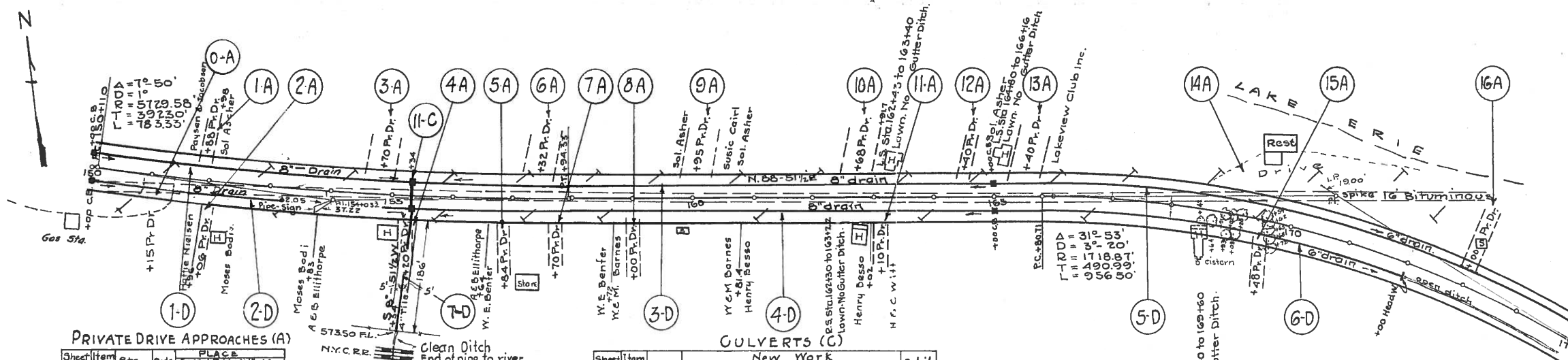
Sta. 150+68
R.R. Sp. P.O. R.F.
Elev. 577.57

Note: Grade line shown is crown of finished pavement.



Exc.	2106	Cu. Yds.
Emb.	1729	
Waste	2075	
Σ	5910	

S.H. 438 Sec. F
S.H. 279 SEC B1, B2; SEC. PT. CLINTON (PART)
OTTAWA COUNTY



PRIVATE DRIVE APPROACHES (A)

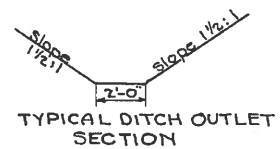
Sheet No	Item No	Sta	Side	PLACEMENT	12"	18"	24"	30"	36"
9	0-A	151+15	Rt						
9	1-A	151+80	Lt						
9	2-A	152+06	Rt						
9	3-A	154+70	Lt						
9	4-A	155+20	Rt						
9	5-A	156+84	Lt						
9	6-A	157+32	Rt						
9	7-A	157+70	Rt						
9	8-A	159+00	Lt						
9	9-A	159+95	Lt						
9	10-A	162+68	Lt						
9	11-A	163+10	Rt						
9	12-A	164+40	Lt						
9	13-A	165+40	Lt						
9	14-A	169+7	Lt						
9	15-A	169+48	Rt						
9	16-A	173+00	Lt						
	Total								269

GULVERTS (C)

Sheet No	Item No	Sta	Lin. Ft	Exc.	Catch Basins	Head Walls	Detail Sheet
9	11-C	155+34	60.5	18	2		34
TOTALS			60.5	18	2		

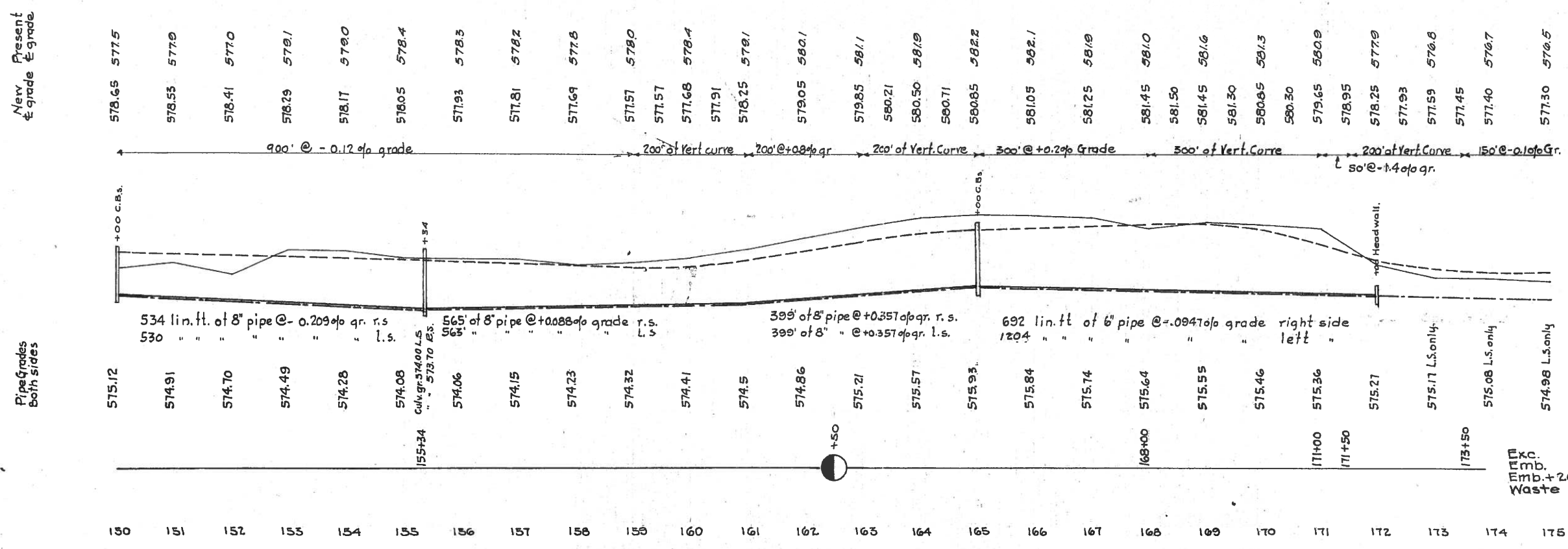
PLACING SIDE UNDERDRAINS (D)

Sheet No	Item No	Station	Side	Pipe	Size	and	lin. ft	Exc. Cu. Yd.	Head Walls	Cu. Yd.	Reinf. #2 C.R.	Detail Sheet	Remarks
9	1-D	150+01	Lt	6"	530								
9	2-D	150+01	Rt	6"	334								
9	3-D	155+23	Lt	6"	962								C.B. - 165+00
9	4-D	155+23	Rt	6"	964								C.B. - 165+00
9	5-D	165+01	Lt	6"	1204								
9	6-D	165+01	Rt	6"	692								H. Wall - 172+00
9	7-D	155+34	Rt	6"			200						Removal of 4" tile inc. in Exc.
Totals					1896	2900	200		20		1		



Sta. 150+68 R.R. Sp. Po. Pa. R. L. Ele. 577.57	Sta. 157+15 R.R. Sp. Po. Pa. R. L. Ele. 577.37	Sta. 162+55 R.R. Sp. Po. Pa. R. L. Ele. 580.13	Sta. 165+18 R.R. Sp. Cottonwood L. Ele. 581.29	Sta. 168+55 R.R. Sp. Tel. Po. L. Ele. 581.29	Sta. 172+00 R.R. Sp. Po. Pa. R. L. Ele. 578.13
--	--	--	--	--	--

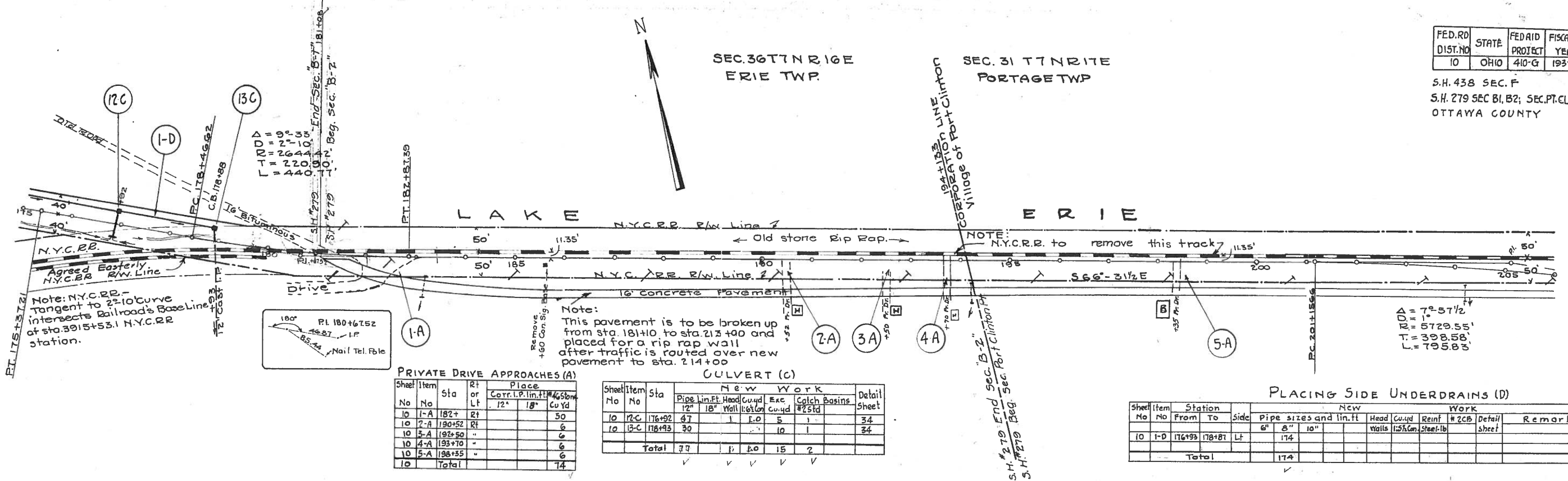
Note: Grade Line shown is crown of finished pavement.



Exc. Emb. + 20% Waste = 1347
= 970
= 1164
= 183

Cu. Yds.

S.H. 438 SEC. F
S.H. 279 SEC B1, B2; SEC. PT. CLINTON (PART)
OTTAWA COUNTY



PRIVATE DRIVE APPROACHES (A)

Sheet No	Item No	Sta	Rt or Lt	Place	Corr. L.P. lin. ft	Co Yd
10	1-A	182+	Rt			50
10	2-A	190+52	Rt			6
10	3-A	193+50	"			6
10	4-A	193+70	"			6
10	5-A	198+55	"			6
10	Total					74

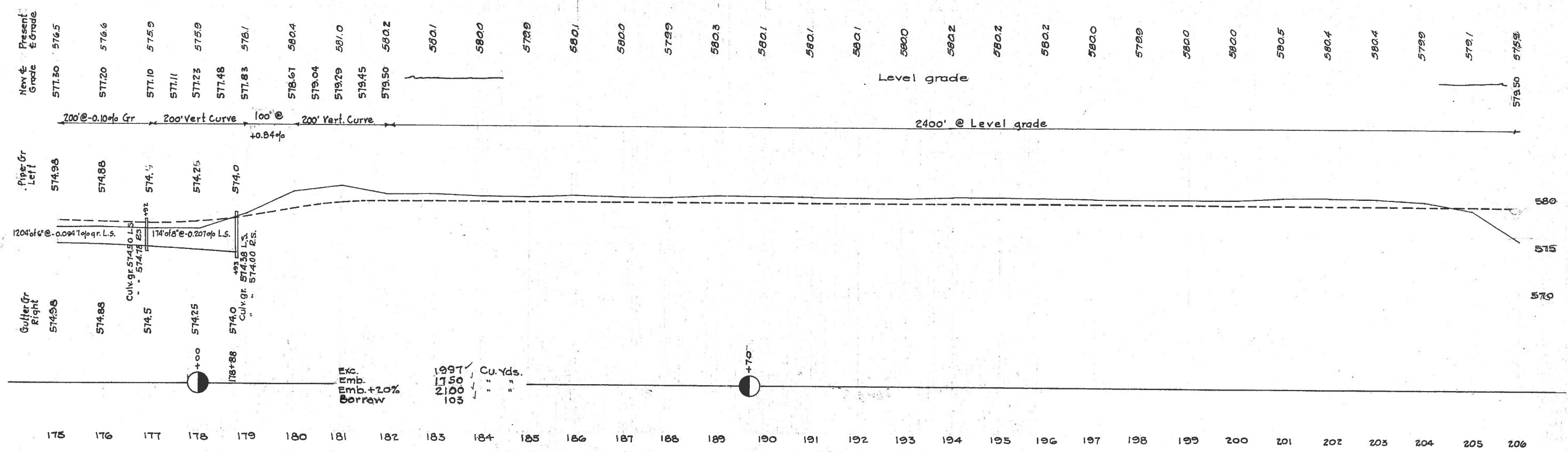
CULVERT (C)

Sheet No	Item No	Sta	New Work					Detail Sheet
			Pipe Lin. Ft	Head Wall	Cu Yd	Exc Cu Yd	Catch Basins	
10	1-C	176+92	47	1	1.0	5	1	34
10	13-C	118+93	30			10	1	34
	Total		77	1	1.0	15	2	

PLACING SIDE UNDERDRAINS (D)

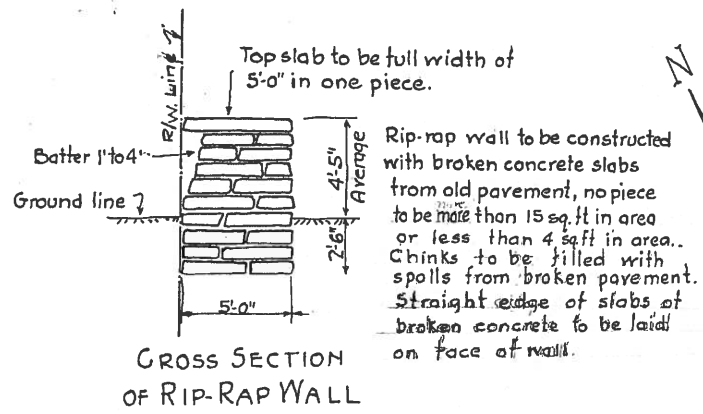
Sheet No	Item No	Station From To	Side	New Work					Detail Sheet	Remarks
				Pipe sizes and lin. ft	Head Walls	Cu Yd	Reinf. Steel-lb	# 2CB		
10	1-D	176+93 178+81	Lt	6" 8" 10"						
	Total			174						

Sta. 176+20 R.R. sp. Tel. P. B. Ele 576.67	Sta. 179+20 R.R. sp. Cottwood R. E. Ele 577.49	Sta. 183+20 X S.W.H.W. R. E. Ele 577.13	Sta. 184+00 R.R. sp. P. B. R. E. Ele 574.85	Sta. 190+15 R.R. sp. P. B. R. E. Ele 575.21	Sta. 194+30 X N.W. Cor. N.H.W. R. E. Ele 577.42	Sta. 198+00 R.R. sp. P. B. R. E. Ele 577.43	Sta. 200+70 R.R. sp. P. B. R. E. Ele 574.62	Sta. 204+20 X N.W. Cor. N.H.W. R. E. Ele 576.69
--	--	---	---	---	---	---	---	---



FED. RD. DIST. NO.	STATE PROJECT NO.	FED. PROJECT NO.
10	0410	410-57

S.H. 438 SEC F
S.H. 219 SEC B1, B2; SEC PT. CLINTON
OTTAWA COUNTY



Rip-rap wall to be constructed with broken concrete slabs from old pavement, no piece to be more than 15 sq. ft in area or less than 4 sq ft in area. Chinks to be filled with spoils from broken pavement. Straight edge of slabs of broken concrete to be laid on face of wall.

PRIVATE DRIVE APPROACHES (A)

Sheet No	Item No	Sta	Rt or Lt	Place	Corr. I.P. Lin. Ft	% Slope
11	1-A	215+00	Rt	12"	18"	30
	2-A	219+10	Rt			15
	3-A	220+60	Rt			16
	4-A	221+50	Rt			15
	5-A	223+25	Rt			19
	6-A	223+75	Rt			15
11	Total					110

Rip Rap Wall
Sta. 211+50 - 224+00 = 1278.35 lin. ft. ✓
Volume = 43738 Cu. ft. ✓

This pavement to be broken up and placed for a rip rap wall L.S. from Sta 211+50 to Sta. 224+00.

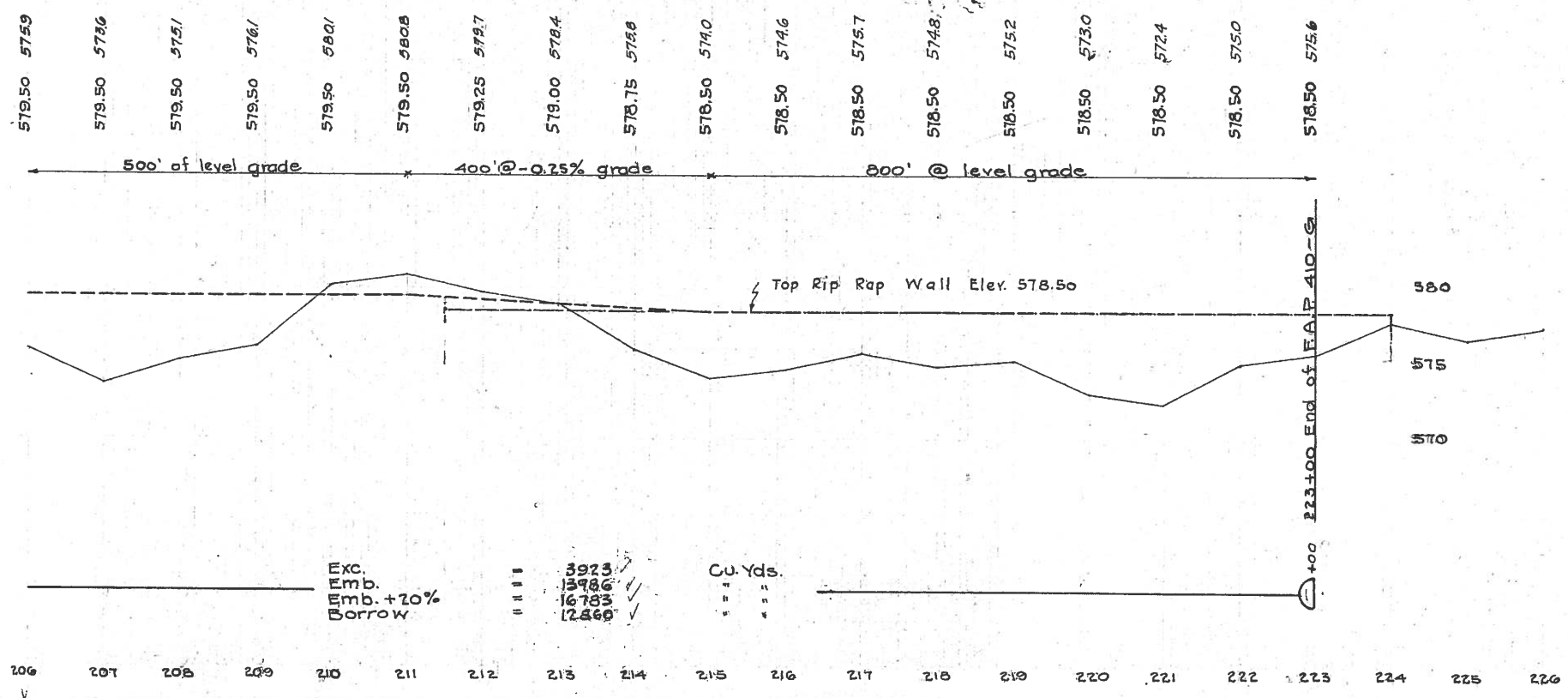
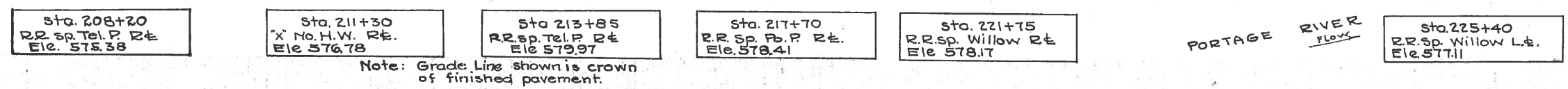
EXTRA CONCRETE PAVEMENT
Sta 211+50 to 223+00
Average length 1146.5'
1146.5' x 20' = 22930 sq. ft = 2547.78 sq. yd. ✓

Note: Old stone Rip Rap from Sta. 211+50 to Sta. 214+00 L.S. to be placed for a rip rap wall as directed by the engineer.

Note: Old Bet Wall from Sta. 214+30 to Sta. 215+15 R.S. to be removed and placed for a rip rap wall as directed by the engineer.

Note: Old Conc. Pavement R.S. from Sta. 181+10 to Sta. 223+60 to be broken up and placed for a rip rap wall L.S. from Sta. 211+50 to Sta. 224+00

Old Conc. Pavement opposite Sta. 213+00 to Sta. 223+60 shall not be removed until traffic is routed over new pavement. (Sta. 214+00 - Sta. 223+00)



New & Present Grade

PORTAGE RIVER FLOW

223+00 End of F.A.P. 410-G