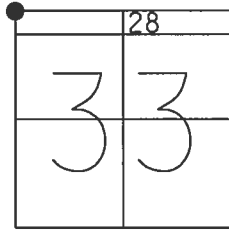


O.D.O.T. DISTRICT 2 SURVEY OFFICE (USE ONLY)

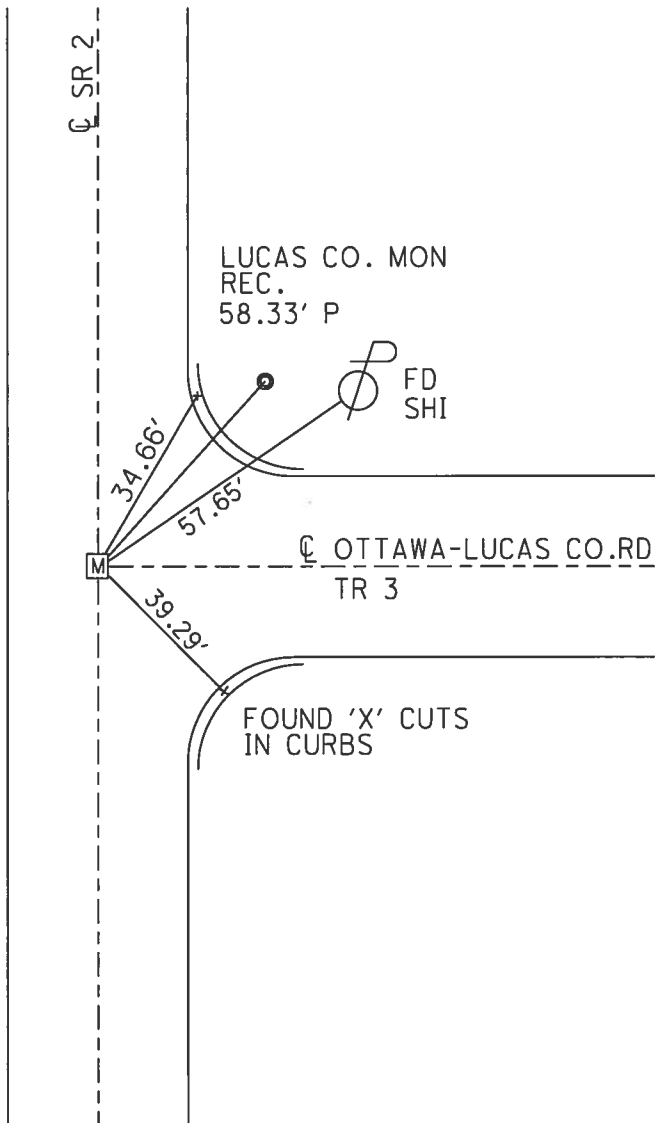
PERSONNEL \_\_\_\_\_ REFERENCE NO. 1 SHEET 1 OF 38  
 NOTES RHOADES DATE 6/24/15 ROUTE SR 2  
 H.C. O'DONNELL WEATHER FAIR COUNTY OTTAWA  
 R.C. RHOADES TEMP. 70° TOWNSHIP BENTON  
 \_\_\_\_\_ SECTION 28  
 \_\_\_\_\_ T 8 N R 14 E

TYPE MONUMENT MONBOX  
 ON SURFACE - ~~BELOW~~ ON  
 LEFT - ☉ PAV'T - RIGHT ON  
 \_\_\_\_\_ TO \_\_\_\_\_ EDGE PAVEMENT  
 S.L.M. 0.00



GRID: NORTHING: 713628.751 EASTING: 1760754.762

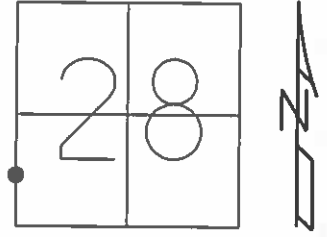
RECORD:  
 SET P.K./WASHER  
 ATOP ADJ.BRASS MON.  
 1/4/83, CRONIN  
 FD. BRASS DISC  
 IN CONC. 7" DOWN  
 PLACED LG.R.R.SPIKE  
 ON SURFACE  
 10/21/04, MB  
 FD MAG/WASHER  
 GPS, REF1  
 11/22/11, SAH  
 FD P.K.NAIL  
 4/17/13, SDC  
 FD MONBOX  
 W/ 1" IPIN  
 REF56  
 3/18/15, EBW  
 FD MONBOX  
 W/ 1" IPIN  
 GPS, NEWREF1  
 6/24/15, JFO



O.D.O.T. DISTRICT 2 SURVEY OFFICE (USE ONLY)

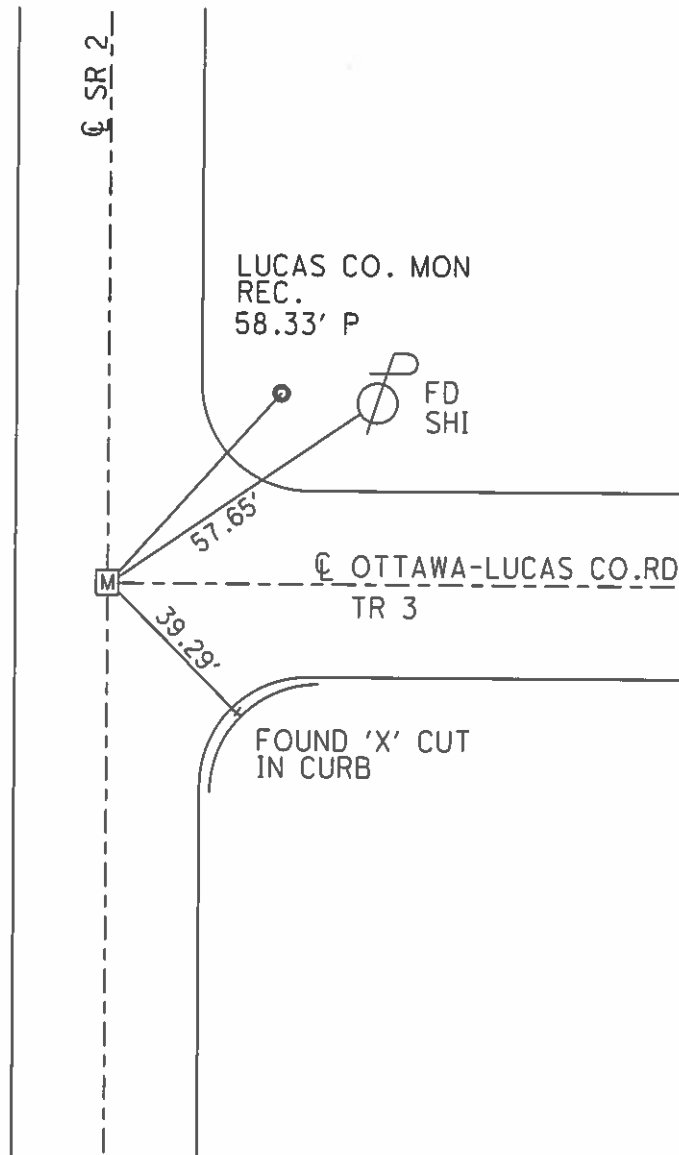
PERSONNEL \_\_\_\_\_ REFERENCE NO. 1 SHEET 1 OF 38  
 NOTES RHOADES DATE 6/24/15 ROUTE SR 2  
 H.C. O'DONNELL WEATHER FAIR COUNTY OTTAWA  
 R.C. RHOADES TEMP. 70° TOWNSHIP BENTON  
 SECTION 28  
 T 8 N R 14 E

TYPE MONUMENT MONBOX  
 ON SURFACE - ~~BELOW~~ ON  
 LEFT - ☉ PAV'T - RIGHT ON  
- TO - EDGE PAVEMENT  
 S.L.M. 0.00



GRID: NORTHING: 713628.751 EASTING: 1760754.762

RECORD:  
 SET P.K./WASHER  
 ATOP ADJ.BRASS MON.  
 1/4/83, CRONIN  
 FD. BRASS DISC  
 IN CONC. 7" DOWN  
 PLACED LG.R.R.SPIKE  
 ON SURFACE  
 10/21/04, MB  
 FD MAG/WASHER  
 GPS, REF1  
 11/22/11, SAH  
 FD P.K.NAIL  
 4/17/13, SDC  
 MONBOX INSTALLED  
 W/ 1" IPIN  
 GPS, NEWREF1  
 6/24/15, JFO



LUCAS CO.  
OTTAWA CO. TR 3  
FO BRASS DISK

NW CORNER SECTION 28 T8N R14E

USE FO. BRASS MONUMENT

N= 713,628.7148 E= 1,760,754.6726

1574.87'

2  
FO BRASS DISK

NW CORNER SECTION 33 T8N R14E

USE FO. BRASS MONUMENT (0.51' BELOW SURFACE)

N= 712,054.085 E= 1,760,727.192

2647.77'

3  
TR 76  
FO BRASS DISK

W 1/4 POST SECTION 33 T8N R14E

USE FO. BRASS MONUMENT (0.53' BELOW SURFACE)

N= 709,406.787 E= 1,760,679.966

2673.24'

S2S7A

S2R2

4  
FO IRON PIN  
IN METAL BOX

NOTE TO SET IRON PIN IN MONUMENT BOX

① NW CORNER SECTION 28 T8N R14E

② NW CORNER SECTION 33 T8N R14E

③ W 1/4 POST SECTION 33 T8N R14E

3 PINS & BOXES NEEDED

OR

3 MODIFIED BOXES

O.D.O.T. DISTRICT 2 SURVEY OFFICE (Use Only)

PERSONNEL \_\_\_\_\_

REFERENCE NO. 1

SHEET \_\_\_\_\_ OF \_\_\_\_\_

NOTES Finger

DATE 6/21/11

ROUTE 2

H.C. Rousos

WEATHER Sunny

COUNTY Ottawa

R.C. Finger

TEMP. 80° F

TOWNSHIP Benton

SECTION \_\_\_\_\_

T 8 N R 14 E

TYPE MONUMENT PK/WASHER

ON SURFACE - ~~BELOW~~ Surface

~~LEFT - Q~~ PAV'T - ~~RIGHT~~ \_\_\_\_\_

\_\_\_\_\_ TO \_\_\_\_\_ EDGE PAVEMENT

S.L.M. 0.00

Lucas Ottawa	Co. line
	2 8



Grid: Northing: 713628.702 Easting: 1760754.829

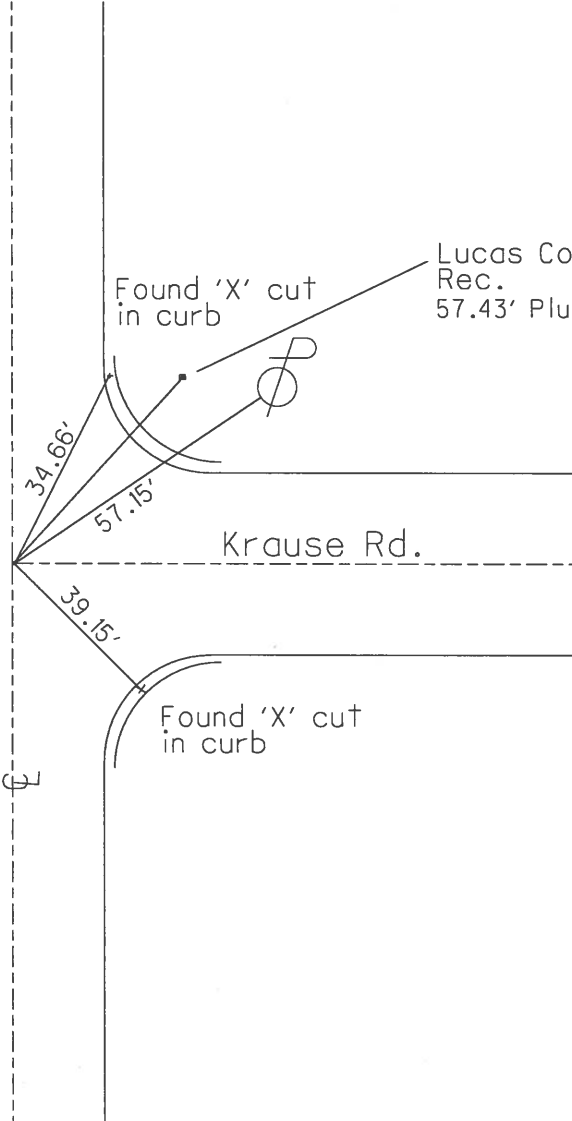
Record

Fd. Brass Disc. in conc  
7" down, placed Lrg. RR  
spike on surface  
Homan, Canterbury,  
Barnhise  
10/21/04

Lrg. RSPK atop  
Brass Disc in Conc.  
7" Down

Reset PK/Washer  
11/2/11  
TR

SR. 2



Lucas Co. Mon  
Rec.  
57.43' Plumbed

Krause Rd.

Found 'X' cut  
in curb

Q

QD.O.T. DISTRICT 2 SURVEY OFFICE

Sht. 1 of 1

County Ottawa S.R. #2

Date ~~1/2/83~~ 6/21/14

Township Benton

Weather sunny ✓

Section 28

Temp. ~~30°~~ 80°

T8N, R14E

Personnel Cronin Finger

Rippke Rousos

Geyman

Barbour

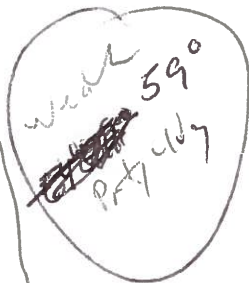
①

Lucas  
ottawa

Co. line	
28	



GPS  
Ref OTT 1



FD

4' cut in  
curb

39.15

57.43

34.70

34.66

FD  
N/S

57.15

4' cut in  
curb

FD

Lucas Co. Mon.  
Rec

0 ± 00

Set P.K. washer atop

Adj. brass monument

Ottawa  
Lucas

Fd Brass Disk in Conc.  
7" Down, placed Large  
RR Spike on surface  
10-21-04  
Homan  
Barnhisel  
Canterbury



FD LG RR SPK  
6/21/11 EAF

S.S.R. #22

QD.O.T. DISTRICT 2 SURVEY OFFICE

Sht. 1 of

County Ottawa S.R. #2

Date 1/4/83

Township Benton

Weather sunny

Section 28

Temp. 30°

T8N, R14E

Personnel Cronin

Rippt

Geyman

Barbour

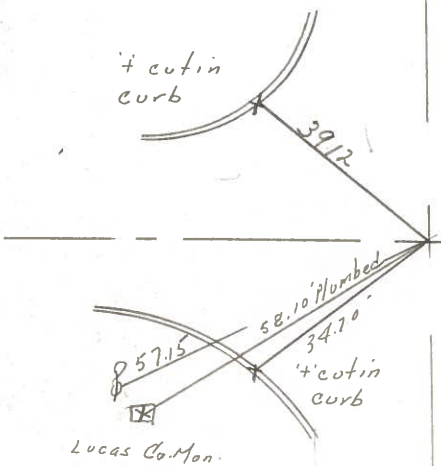
①

Lucas  
ottawa

Lucas	Co. Line
ottawa	28



0+00  
Set P.K. & washer atop  
Adj. brass monument



Fd Brass Disk in Conc.  
7" Down, Placed Large  
RR Spike on Surface  
10-21-04  
Homan  
Barnhazel  
Canterbury

Ottawa  
Lucas

S.R. #2

PERSONNEL TITLE PERSONNEL TITLE

Schneider  
Mosser  
Barbour  
Potts

COUNTY Ottawa DATE 5-9-68

S. R. 2 WEATHER Cloudy-windy

SEC. Lucas Co. Line-East TEMP. 70°

DESCRIPTION Ties for Control Points JOB NO. \_\_\_\_\_

LEFT CENTER LINE RIGHT

