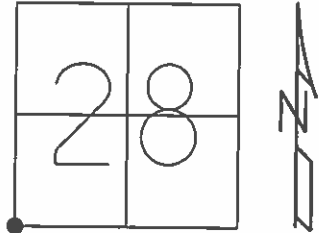


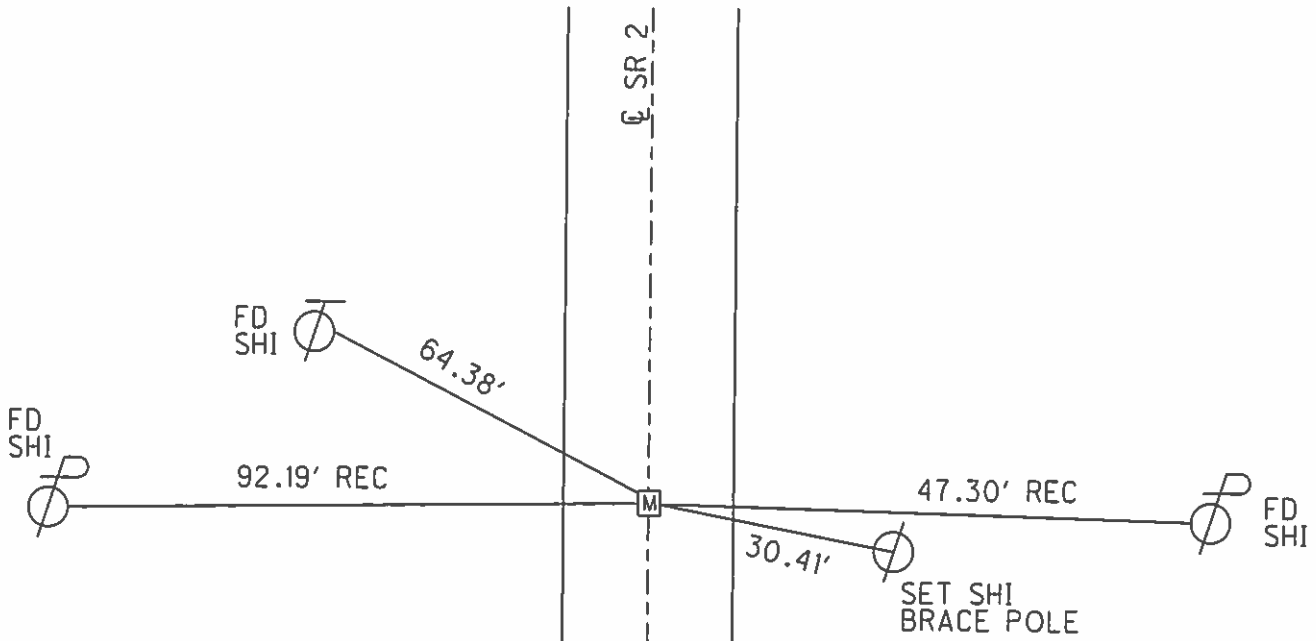
O.D.O.T. DISTRICT 2 SURVEY OFFICE (USE ONLY)

PERSONNEL	REFERENCE NO.	<u>2</u>	SHEET	<u>2</u>	OF	<u>38</u>
NOTES	RHOADES	DATE	<u>6/24/15</u>	ROUTE	<u>SR 2</u>	
H.C.	<u>O'DONNELL</u>	WEATHER	<u>FAIR</u>	COUNTY	<u>OTTAWA</u>	
R.C.	<u>RHOADES</u>	TEMP.	<u>70°</u>	TOWNSHIP	<u>BENTON</u>	
				SECTION	<u>28</u>	
				T	<u>8</u>	N
				R	<u>14</u>	E

TYPE MONUMENT MONBOX  
 ON SURFACE - ~~BELOW~~ ON  
 LEFT - ☉ PAV'T - RIGHT ON  
11.6' TO LT EDGE PAVEMENT  
 S.L.M. 15+74.77



GRID: NORTHING: 712054.094      EASTING: 1760727.233



RECORD:  
 STA. 15+75.20  
 SET P.K./WASHER  
 ATOP BRASS MON.  
 1/4/83, CRONIN  
 FD P.K./WASHER  
 GPS, REF2  
 11/22/11, SAH  
 FD P.K.NAIL  
 4/17/13, SDC  
 MONBOX INSTALLED  
 W/ 1" IPIN  
 GPS, NEWREF2  
 6/24/15, JFO

LUCAS CO.  
OTTAWA CO. TR 3  
FO BRASS DISK

NW CORNER SECTION 28 T8N R14E

USE FO. BRASS MONUMENT

N= 713,628.7148 E= 1,760,754.6726

1574.87'

2

2647.77'

TR 76

NW CORNER SECTION 33 T8N R14E

USE FO. BRASS MONUMENT (0.51' BELOW SURFACE)

N= 712,054.085 E= 1,760,727.192

3

FO BRASS DISK

W 1/4 POST SECTION 33 T8N R14E

USE FO. BRASS MONUMENT (0.53' BELOW SURFACE)

N= 709,406.787 E= 1,760,679.966

2673.24'

S2S7A

S2R2

4

FO IRON PIN  
IN METAL BOX

NOTE TO SET IRON PIN IN MONUMENT BOX

- ⓐ NW CORNER SECTION 28 T8N R14E
- ⓑ NW CORNER SECTION 33 T8N R14E
- ⓒ W 1/4 POST SECTION 33 T8N R14E

3 PINS & BOXES NEEDED

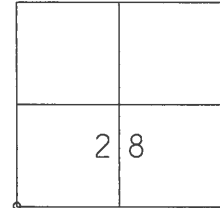
OR

3 MODIFIED BOXES

O.D.O.T. DISTRICT 2 SURVEY OFFICE (Use Only)

PERSONNEL \_\_\_\_\_ REFERENCE NO. 2 SHEET \_\_\_\_\_ OF \_\_\_\_\_  
 NOTES Finger DATE 6/21/11 ROUTE 2  
 H.C. Rousos WEATHER Sunny COUNTY Ottawa  
 R.C. Finger TEMP. 80° F TOWNSHIP Benton  
 \_\_\_\_\_ SECTION 28  
 \_\_\_\_\_ T 8 N R 14 E

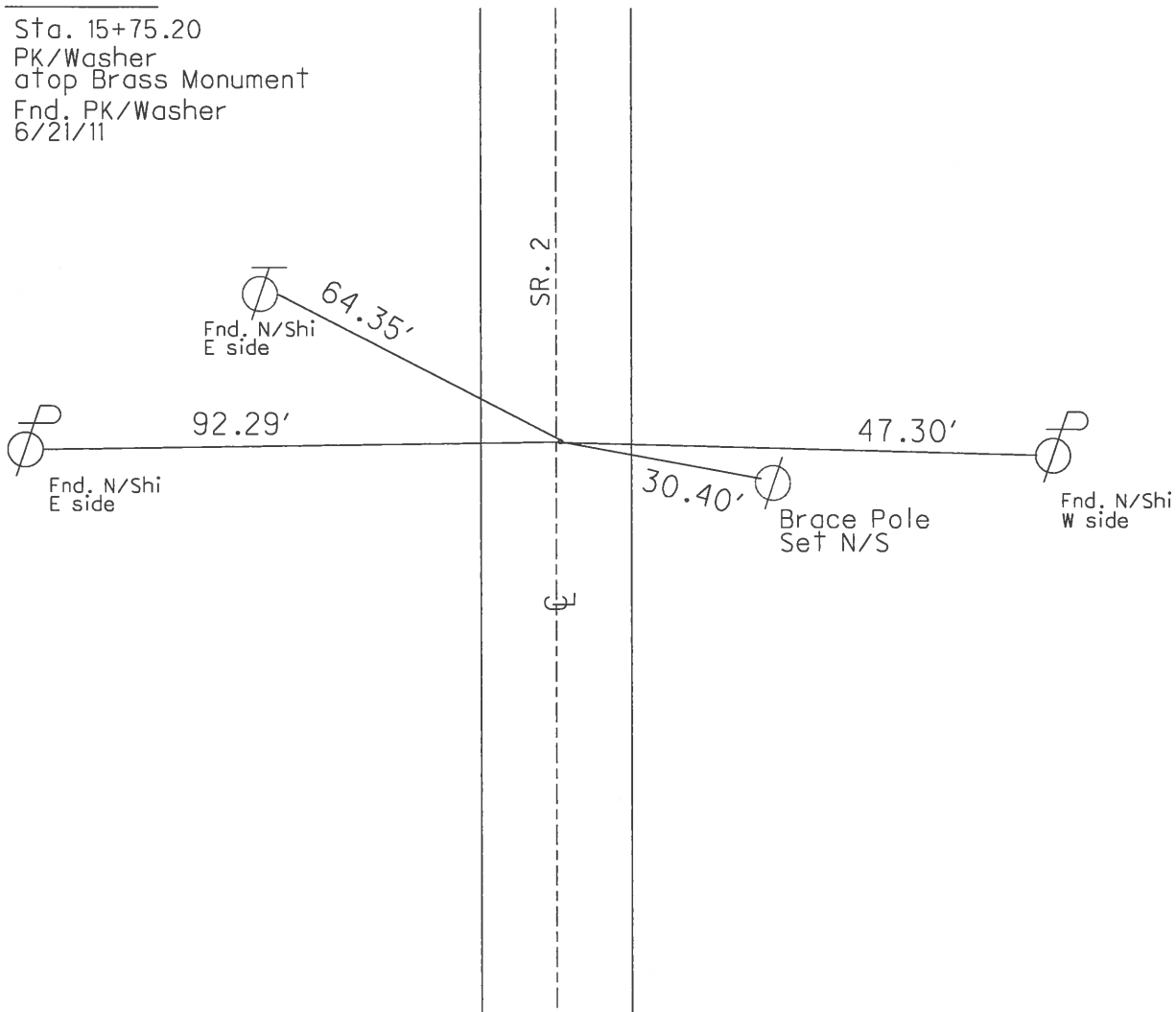
TYPE MONUMENT PK/Washer  
 ON SURFACE - ~~BELOW~~ Surface  
~~LEFT - C~~ PAV'T - ~~RIGHT~~ \_\_\_\_\_  
 \_\_\_\_\_ TO \_\_\_\_\_ EDGE PAVEMENT  
 S.L.M. 0.29



Grid: Northing: 712054.198 Easting: 1760727.075

Record

Sta. 15+75.20  
 PK/Washer  
 atop Brass Monument  
 Fnd. PK/Washer  
 6/21/11



County Ottawa S.R. # 2

Township Benton

Section 28

T8N, R14E

Personnel Cronin Finger

Ripple Rausos

Geyman

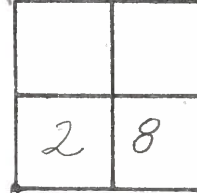
Barbour

(2)

Date ~~1/1/83~~ 6/21/11

Weather sunny ✓

Temp. 30° 80°



FD PK/W  
6/21/11 EAF

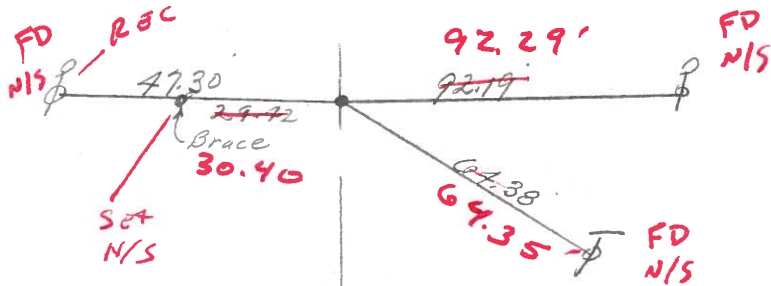
OK  
NO NEED to  
Reset  
6/21/11

GPS

REF OTT 2  
6/21/11



15+75.20  
set P.K.'s washer  
atop brass monument



S.R. # 2



County Ottawa S.R. # 2

Date 1/4/83

Township Benton

Weather sunny

Section 28

Temp. 30°

T8N, R14E

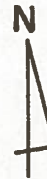
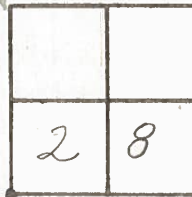
Personnel Cronin

Ripple

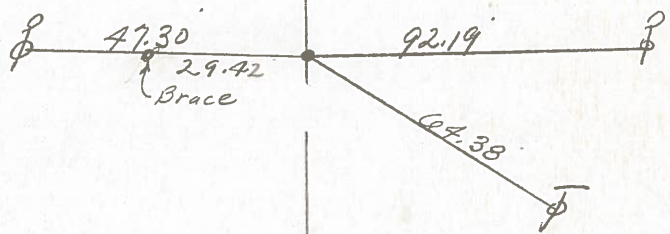
Geyman

Barbour

2



15+75.20  
set P.K. & washer  
atop brass monument



S.S.R.

PERSONNEL TITLE PERSONNEL TITLE

Schneider  
 Mosser  
 Barbour  
 Potts

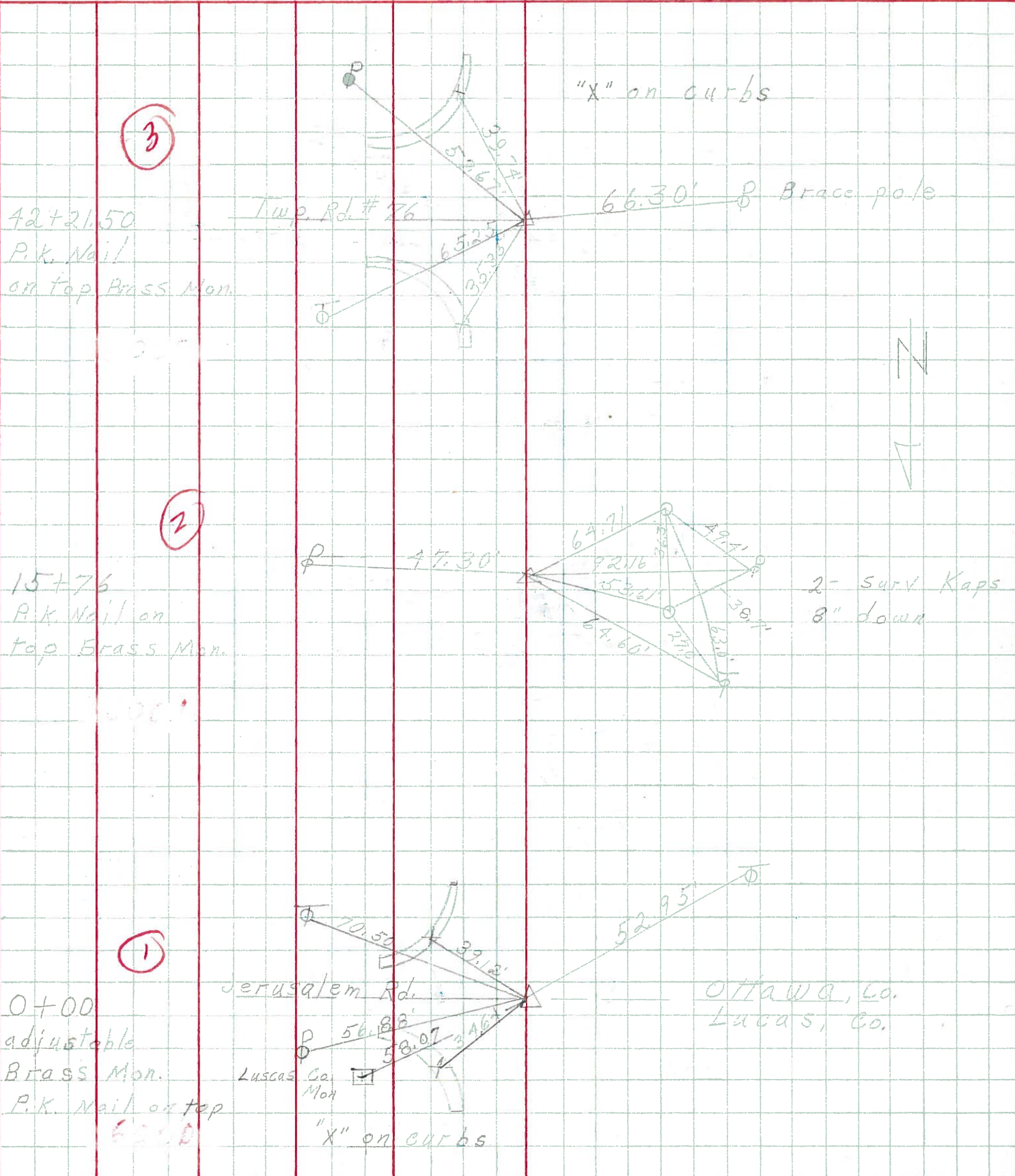
COUNTY Ottawa DATE 5-9-68

S. R. 2 WEATHER Cloudy - windy

SEC. Lucas Co. Line - East TEMP. 70°

DESCRIPTION Ties for Control Points JOB NO. \_\_\_\_\_

LEFT CENTER LINE RIGHT





PERSONNEL TITLE PERSONNEL TITLE

COUNTY O Howard DATE \_\_\_\_\_

S. H. 2 WEATHER \_\_\_\_\_

SEC. \_\_\_\_\_ TEMP. \_\_\_\_\_

DESCRIPTION

LEFT

CENTER LINE

RIGHT

