

LUCAS CO.  
OTTAWA CO. TR 3  
FO BRASS DISK

NW CORNER BENTON 28 TWP R14E

USE FO. BRASS MONUMENT

N= 713,628.7148 E= 1,760,754.6726

1574.87'

2

FO BRASS DISK

NW CORNER BENTON 33 TWP R14E

USE FO. BRASS MONUMENT (0.51' BELOW SURFACE)

N= 712,054.085 E= 1,760,727.192

2647.77'

3

TR 76  
FO BRASS DISK

W 1/4 POST BENTON 33 TWP R14E

USE FO. BRASS MONUMENT (0.53' BELOW SURFACE)

N= 709,406.787 E= 1,760,679.966

2673.24'

S2S7A

S2R2

4

FO IRON PIN  
IN METAL BOX

NOTE TO SET IRON PIN IN MONUMENT BOX

① NW COR BENTON 28 TWP R14E

② NW CORNER BENTON 33 TWP R14E

③ W 1/4 POST BENTON 33 TWP R14E

3 PINS & BOXES NEEDED

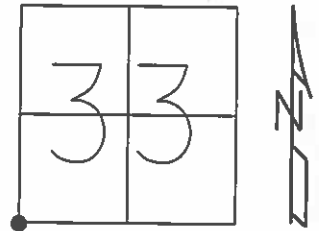
OR

3 MODIFIED BOXES

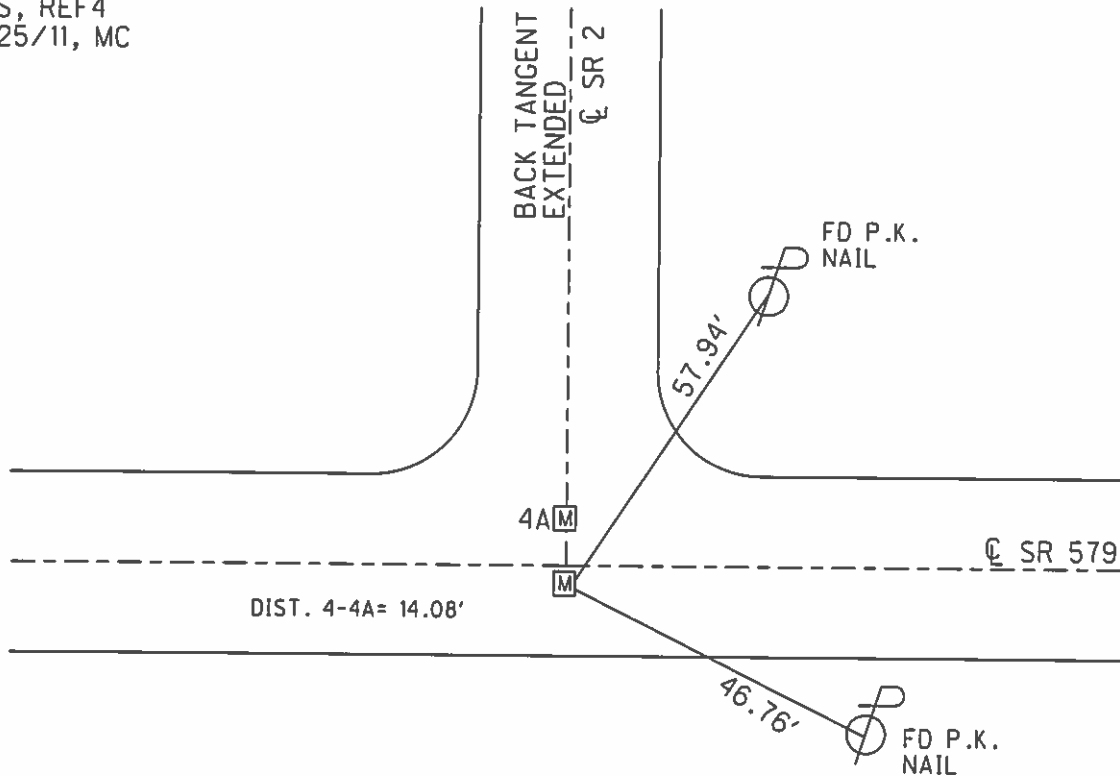
O.D.O.T. DISTRICT 2 SURVEY OFFICE (USE ONLY)

PERSONNEL \_\_\_\_\_ REFERENCE NO. 4 SHEET 4 OF 38  
 NOTES FINGER \_\_\_\_\_ DATE 6/21/11 ROUTE SR 2  
 H.C. ROUSOS \_\_\_\_\_ WEATHER SUNNY COUNTY OTTAWA  
 R.C. FINGER \_\_\_\_\_ TEMP. 80° TOWNSHIP BENTON  
 \_\_\_\_\_ SECTION 33  
 \_\_\_\_\_ T 8 N R 14 E

TYPE MONUMENT MON.BOX  
 ON SURFACE - ~~BELOW~~ ON \_\_\_\_\_  
 LEFT - ☉ PAV'T - RIGHT ON, 3.6' RT ☉ SR 579  
 \_\_\_\_\_ TO \_\_\_\_\_ EDGE PAVEMENT  
 S.L.M. 68+95.92  
 GRID: NORTHING: 706733.853 EASTING: 1760633.609



RECORD: P.I.  
 STA. 68+95.30  
 FD BROKEN P.K.  
 NAIL OVER  
 R.R.SPIKE  
 1/4/83, CRONIN  
 FD MON.BOX  
 GPS, REF4  
 11/25/11, MC



O.D.O.T. DISTRICT 2 SURVEY OFFICE (Use Only)

PERSONNEL \_\_\_\_\_

REFERENCE NO. A4

SHEET \_\_\_\_\_ OF \_\_\_\_\_

NOTES Finger

DATE 6/21/11

ROUTE 2

H.C. Rousos

WEATHER Sunny

COUNTY Ottawa

R.C. Finger

TEMP. 80°F

TOWNSHIP Benton

SECTION 33

T 8 N R 14 E

TYPE MONUMENT Mon. box

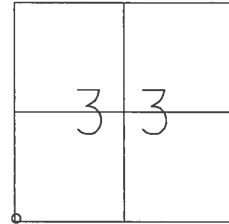
ON SURFACE - ~~BELOW~~ Surface

LEFT - CL PAV'T - RIGHT \_\_\_\_\_

\_\_\_\_\_ TO \_\_\_\_\_ EDGE PAVEMENT

S.L.M. 1.44

Grid: Northing: 706733.867 Easting: 1760633.613



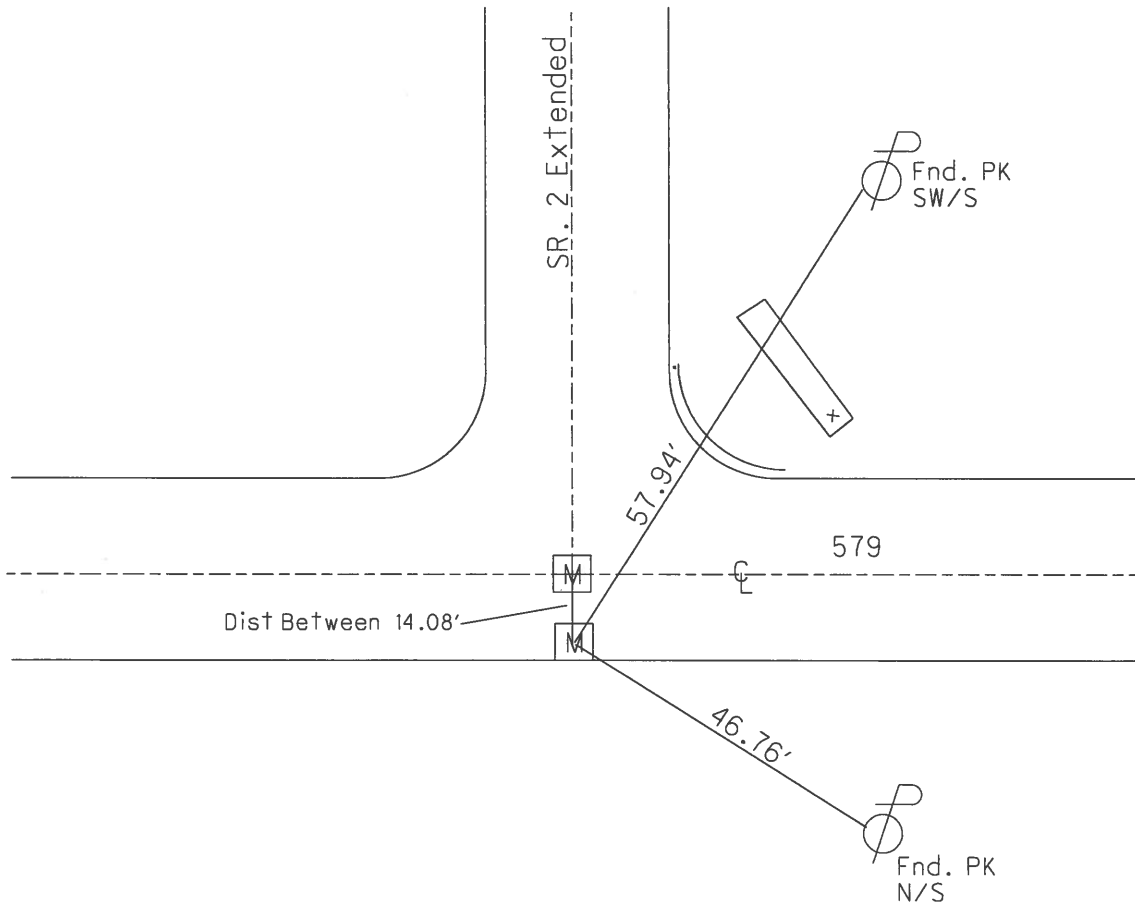
4

Record

Sta. 68+95.30

Fnd. Mon Box

6/21/11



County Ottawa S.R. # 2

Date ~~1/4/83~~ 6/21/11

Township Benton

Weather sunny ✓

Section 33

Temp. ~~30°~~ 80°

T8N, R14E

Personnel Cronin Finger

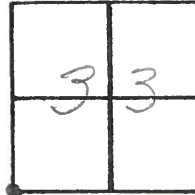
Rippke Rousos

Geyman

Barbour

(4)

4A



P.I.  
 68+95.30  
 Fd. broken P.K (over  
 R.R spike)

MON. BOX

