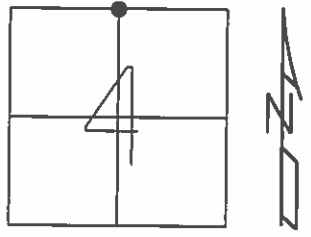


O.D.O.T. DISTRICT 2 SURVEY OFFICE (USE ONLY)

PERSONNEL	REFERENCE NO.	<u>4 B</u> SHEET	<u>6</u> OF <u>38</u>
NOTES	<u>RHOADES</u> DATE <u>6/24/15</u>	ROUTE	<u>SR 2</u>
H.C.	<u>O'DONNELL</u> WEATHER <u>FAIR</u>	COUNTY	<u>OTTAWA</u>
R.C.	<u>RHOADES</u> TEMP. <u>70°</u>	TOWNSHIP	<u>BENTON</u>
		SECTION	<u>4</u>
		T <u>7</u> N	R <u>14</u> E

TYPE MONUMENT MONBOX  
 ON SURFACE - ~~BELOW~~ ON \_\_\_\_\_  
~~LEFT~~ - Q PAV'T - RIGHT 14'  
1.7' RT TO RT EDGE PAVEMENT  
 S.L.M. 89+13.75



GRID: NORTHING: 706725.459 EASTING: 1763131.968

RECORD:  
 N 1/4 POST  
 SECTION 4  
 FD MAG NAIL  
 SET BY ANDRUS  
 2011, MC  
 MAG NAIL FOUND  
 4/23/13, SDC  
 MONBOX INSTALLED  
 W/ 1" IPIN  
 GPS, REFB4  
 6/24/15, JFO

