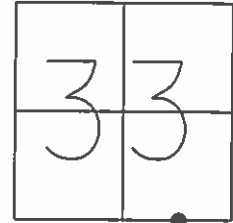


O.D.O.T. DISTRICT 2 SURVEY OFFICE (USE ONLY)

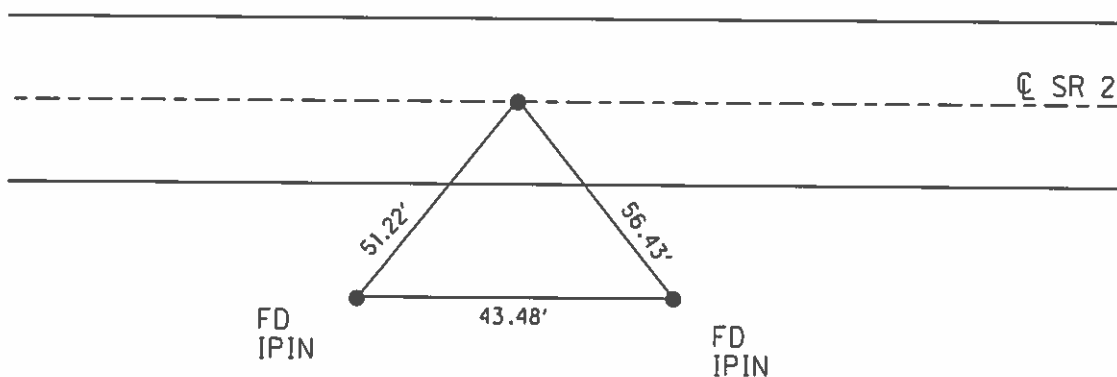
PERSONNEL _____ REFERENCE NO. 5 SHEET 8 OF 38
 NOTES RHOADES DATE 4/23/13 ROUTE SR 2
 H.C. CODER WEATHER CLEAR COUNTY OTTAWA
 R.C. LAU TEMP. 65°F TOWNSHIP BENTON
HOMAN SECTION 33
ROUSOS T 8 N R 14 E

TYPE MONUMENT P.K./WASHER
 ON SURFACE - ~~BELOW~~ ON
 LEFT - ☉ PAV'T - RIGHT ON
11.6' TO LT EDGE PAVEMENT
 S.L.M. 100+10.09



GRID: NORTHING: 706734.961 EASTING: 1764228.443

RECORD:
 STA. 100+03
 SET P.K./WASHER
 ATOP BRASS MON.
 1" BELOW SURF.
 1/4/82, CRONIN
 FD P.K./WASHER
 GPS, REF5
 11/25/11, MC
 SET MAG/WASHER
 GPS, NEWREF5
 10/7/15, JFO



O.D.O.T. DISTRICT 2 SURVEY OFFICE (Use Only)

PERSONNEL _____

REFERENCE NO. 5

SHEET _____ OF _____

NOTES Finger

DATE 6/21/11

ROUTE 2

H.C. Rousos

WEATHER Sunny

COUNTY Ottawa

R.C. Finger

TEMP. 80°F

TOWNSHIP Benton

SECTION 33

T 8 N R 14 E

TYPE MONUMENT Mag/Washer

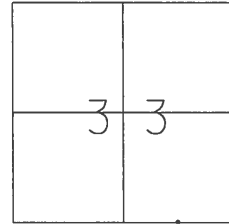
ON SURFACE - ~~BELOW~~ _____

LEFT - ☉ PAV'T - RIGHT _____

_____ TO _____ EDGE PAVEMENT

S.L.M. 1.89

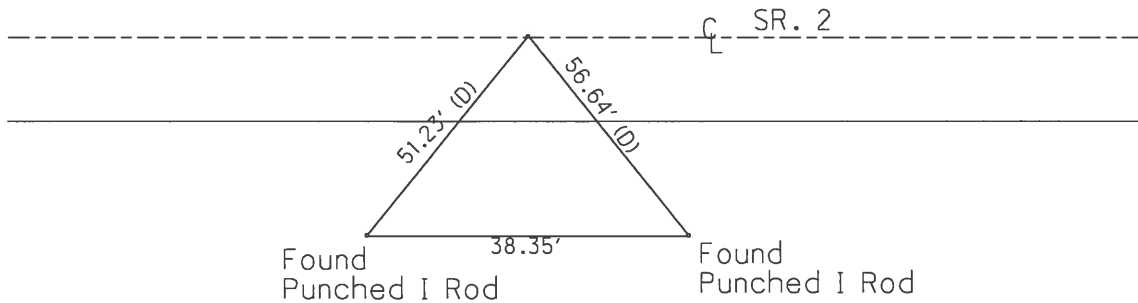
Grid: Northing: 706734.964 Easting: 1764228.401



Record

Sta. 100+03
Set PK&Washer atop
brass monument (1' below
surface)

Reset
Mag & Washer
11/02/11



County Ottawa

Date ~~1/1/82~~ 6/21/11

Township Benton

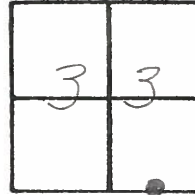
Weather sunny ✓

Section 33

Temp. ~~30°~~ 85°

T8N, R14E

Personnel Cronin Finger



Ripple Rousos

Geyman

Barbour

5

Reset
11-2-11

GPS
REF OTTS

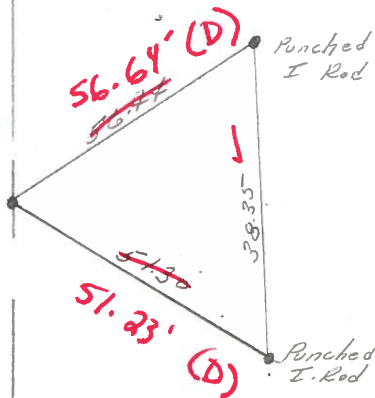
~~DNF~~



100 + 03

Set P.K. 1/2" washer atop
brass monument (1" below
surface)

FD PK
6/21/11



S.S.R. #27

County Ottawa

Date 1/4/82

Township Benton

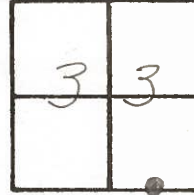
Weather sunny

Section 33

Temp. 30°

T8N, R14E

Personnel Cronin



5

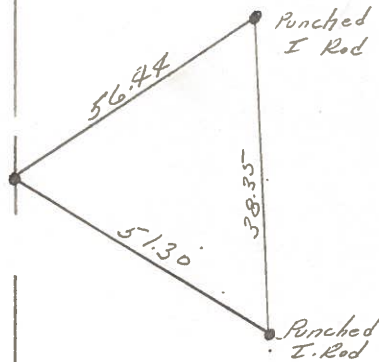
Ripple

Geyman

Barbour



100 + 03
Set P.K. & washer atop
brass monument (1" below
surface)



R.S.E. #27

PERSONNEL TITLE PERSONNEL TITLE COUNTY Ottawa DATE 5-9-68
Schneider _____
Mosser _____ S. R. 2 WEATHER 5-9-68
Barbour _____
Boths _____ SEC. Lucas Co. Line - East TEMP. Cloudy - windy

DESCRIPTION Ties for Control Points JOB NO. _____

