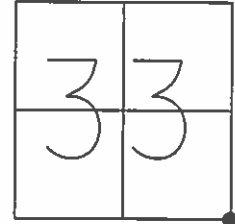


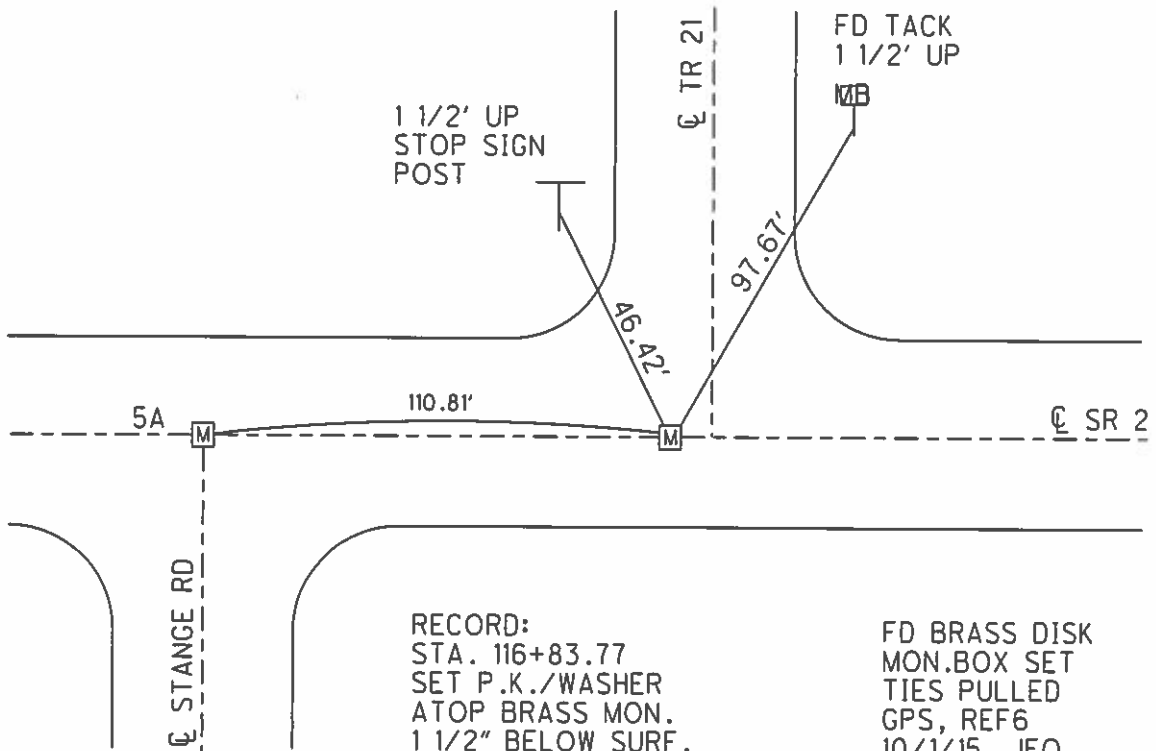
**O.D.O.T. DISTRICT 2 SURVEY OFFICE (USE ONLY)**

PERSONNEL \_\_\_\_\_ REFERENCE NO. 6 SHEET 10 OF 38  
 NOTES RHOADES DATE 10/1/15 ROUTE SR 2  
 H.C. O'DONNELL WEATHER CLOUDY COUNTY OTTAWA  
 R.C. RHOADES TEMP. 59° TOWNSHIP BENTON  
 \_\_\_\_\_ SECTION 33  
 \_\_\_\_\_ T 8 N R 14 E

TYPE MONUMENT MONBOX  
 ON SURFACE - ~~BELOW~~ ON  
 LEFT - ☉ PAV'T - RIGHT ON  
 \_\_\_\_\_ TO \_\_\_\_\_ EDGE PAVEMENT  
 S.L.M. 116+94.93

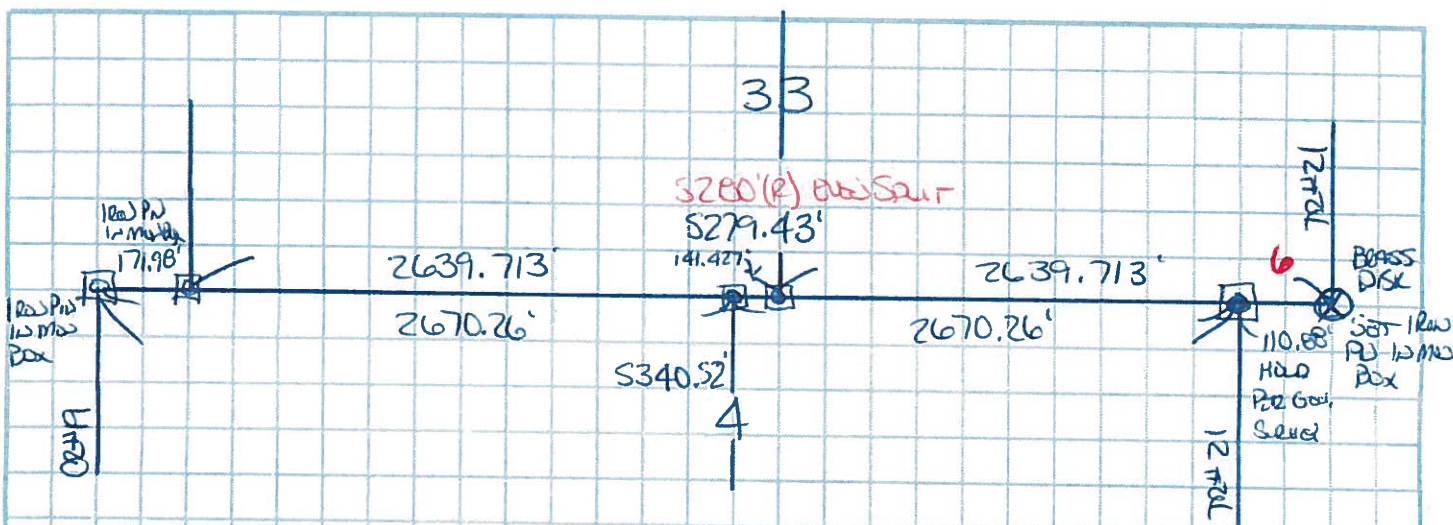


GRID: NORTHING: 706716.057 EASTING: 1765912.974



RECORD:  
 STA. 116+83.77  
 SET P.K./WASHER  
 ATOP BRASS MON.  
 1 1/2" BELOW SURF.  
 1/4/83, CRONIN  
 DNF POINT, ALL TIES  
 WERE DESTROYED  
 6/21/11, TMR

FD BRASS DISK  
 MON.BOX SET  
 TIES PULLED  
 GPS, REF6  
 10/1/15, JFO



NE COR SEC 4 - ESTABLISH ONLINE SE COR TO SW COR SEC 33 TBN R14E HADING 110.88' PER ORIGINAL CONVEYANCE SURVEY

N = 706,716.4748    E = 1,765,802.1266

N 1/4 POST SEC 4 - ESTABLISH ONLINE @ SINGLE PROPORTIONATE MEASUREMENT FROM NE COR TO NW COR SECTION 4. POINT IS A CLOSING CORNER & SHALL BE SET ON S. LINE SEC 33 TBN R14E.

N = 706,725.4530    E = 1,763,131.8817

S 1/4 POST SEC 33 - ESTABLISH ONLINE SE CORNER TO SW CORNER SEC 33 TBN R14E USING SINGLE PROPORTIONATE MEASURE.

N = 706,724.9775    E = 1,763,273.3079

SE COR SEC 33 - USE BRASS DISK (0.57' BELOW SURFACE)

N = 706,716.102    E = 1,765,913.006

NEED TO SET IRON PIN IN MOUNTAIN BOX @ N 1/4 POST & NE COR BOUND SEC 4 T7N  
@ S 1/4 POST & SE COR BOUND SEC 33 TBN

\* BRASS DISK @ SE COR SEC 33  
IS 0.57' BELOW SURFACE.

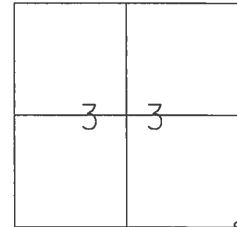
\* 1/4 POSTS WILL BE SURM OF OLD CONCRETE ROAD.

4 PINS & BOXES NEEDED  
OR  
3 PINS & 3 BOXES + 1 MODIFIED BOX

O.D.O.T. DISTRICT 2 SURVEY OFFICE (Use Only)

PERSONNEL \_\_\_\_\_ REFERENCE NO. 6 SHEET \_\_\_\_\_ OF \_\_\_\_\_  
 NOTES Finger DATE 6/21/11 ROUTE Ottawa  
 H.C. Rousos WEATHER Sunny COUNTY Ottawa  
 R.C. Finger TEMP. 86°F TOWNSHIP Benton  
 \_\_\_\_\_ SECTION 33  
 \_\_\_\_\_ T 8 N R 14 E

TYPE MONUMENT PK/Washer  
 ON SURFACE - ~~BELOW~~ \_\_\_\_\_  
 LEFT - ℄ PAV'T - RIGHT \_\_\_\_\_  
 \_\_\_\_\_ TO \_\_\_\_\_ EDGE PAVEMENT  
 S.L.M. 2.22

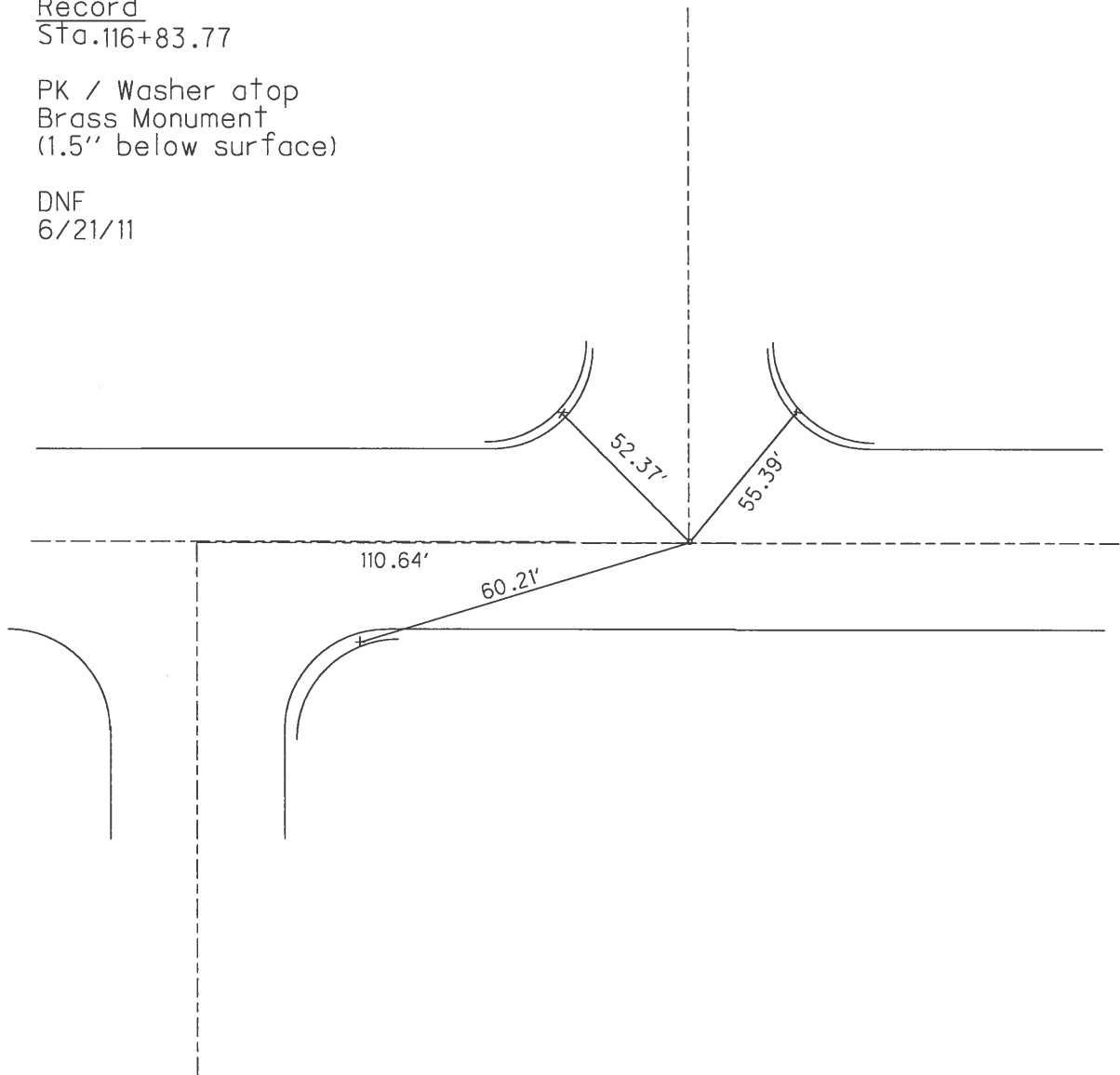


Grid: Northing: \_\_\_\_\_ Easting: \_\_\_\_\_

Record  
 Sta. 116+83.77

PK / Washer atop  
 Brass Monument  
 (1.5" below surface)

DNF  
 6/21/11



County Ottawa S.E.#2

Date ~~1/2/83~~ 6/21/11

Township Benton

Weather sunny - ~~windy~~

Section 33

Temp. ~~36°~~ 86°

T&N, R&E

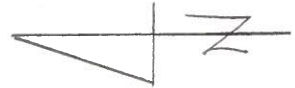
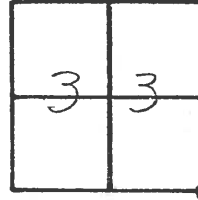
Personnel Cronin Finger

Ripple Rousos

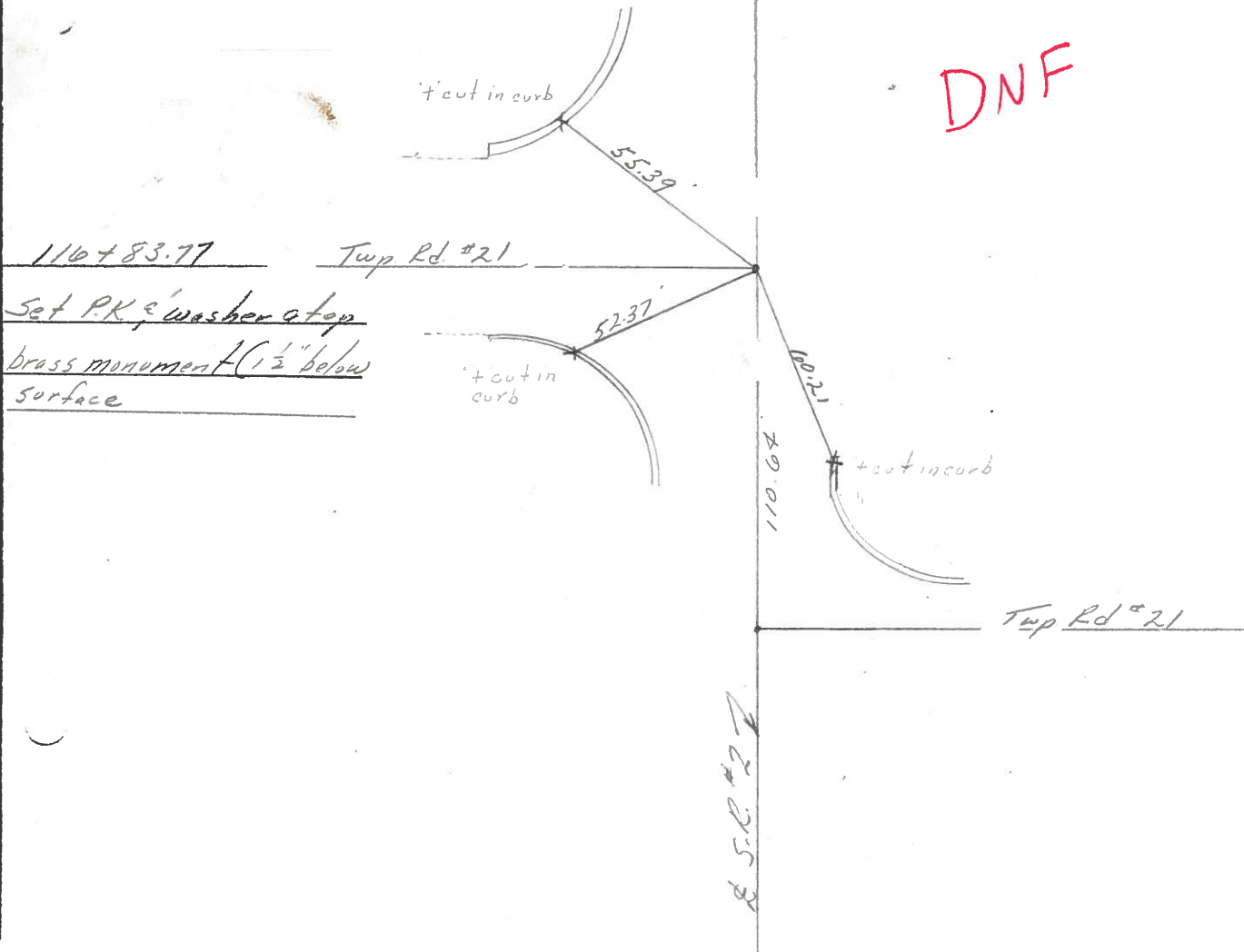
Geyman

Barbour

⑥



DNF





County Ottawa S.R.#2

Date 1/4/83

Township Benton

Weather sunny - windy

Section 33

Temp. 35°

T8N, R4E

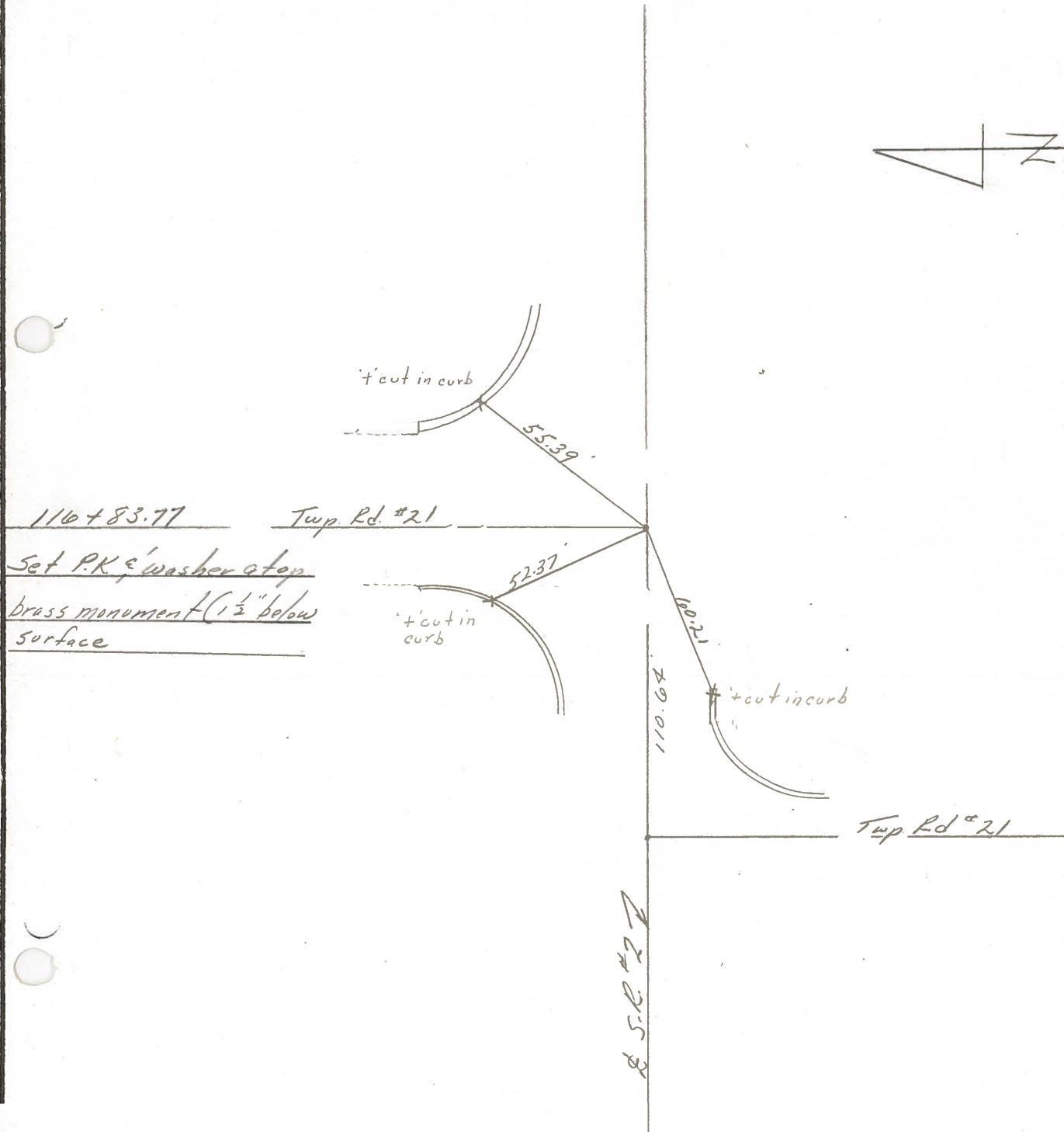
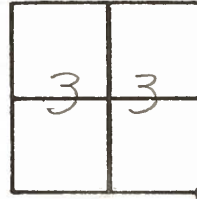
Personnel Cronin

Ripple

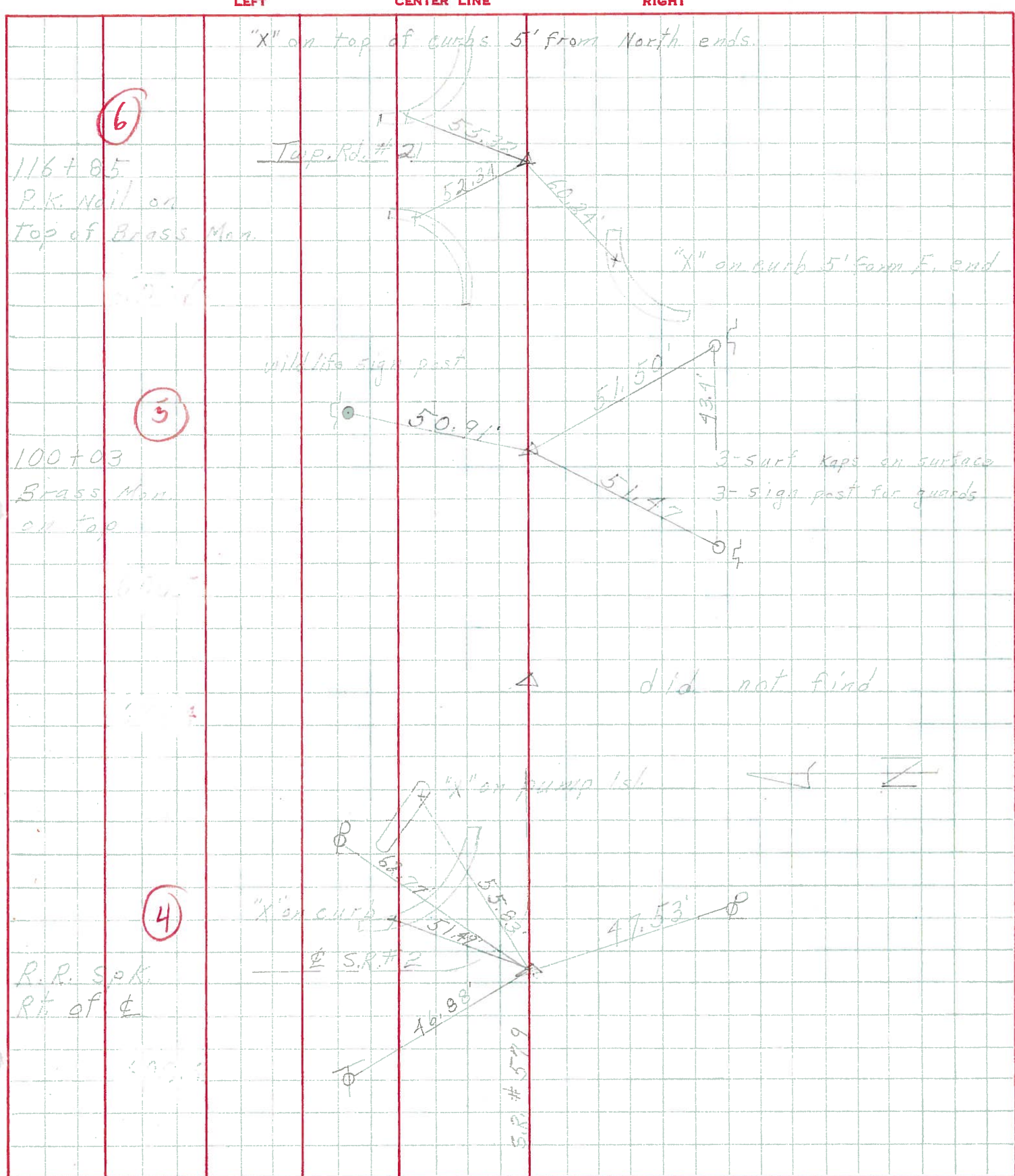
Geyman

Barbour

⑥



PERSONNEL TITLE PERSONNEL TITLE COUNTY Ottawa DATE 5-9-68  
Schneider \_\_\_\_\_  
Mosser \_\_\_\_\_ S. R. 2 WEATHER 5-9-68  
Barbour \_\_\_\_\_  
On H's \_\_\_\_\_ SEC. Lucas Co. Line - East TEMP. Cloudy - Windy  
 DESCRIPTION Ties for Control Points JOB NO. \_\_\_\_\_



PERSONNEL	TITLE	PERSONNEL	TITLE	COUNTY	DATE
				O'Hawa	
				S. H.	WEATHER
				2	
				SEC.	TEMP.

DESCRIPTION LEFT CENTER LINE RIGHT

