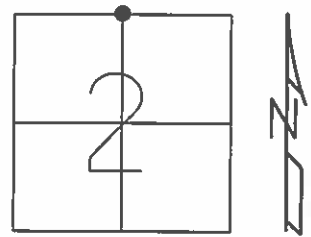


O.D.O.T. DISTRICT 2 SURVEY OFFICE (USE ONLY)

PERSONNEL	REFERENCE NO.	8 A	SHEET	15	OF	38
NOTES	RHOADES	DATE	10/1/15	ROUTE	SR 2	
H.C.	O'DONNELL	WEATHER	CLOUDY	COUNTY	OTTAWA	
R.C.	RHOADES	TEMP.	59°	TOWNSHIP	BENTON	
				SECTION	2	
				T	8	N
				R	14	E

TYPE MONUMENT MON.BOX
 ON SURFACE - ~~BELOW~~ ON _____
 LEFT - ℄ PAV'T - ~~RIGHT~~ 1'
11.7' TO LT EDGE PAVEMENT
 S.L.M. 195+54.55
 GRID: NORTHING: 706581.4072 EASTING: 1773771.1697



RECORD:
 FD MON.BOX SET
 W/ 1" IPIN
 10/1/15, JFO

