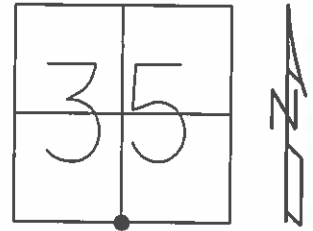


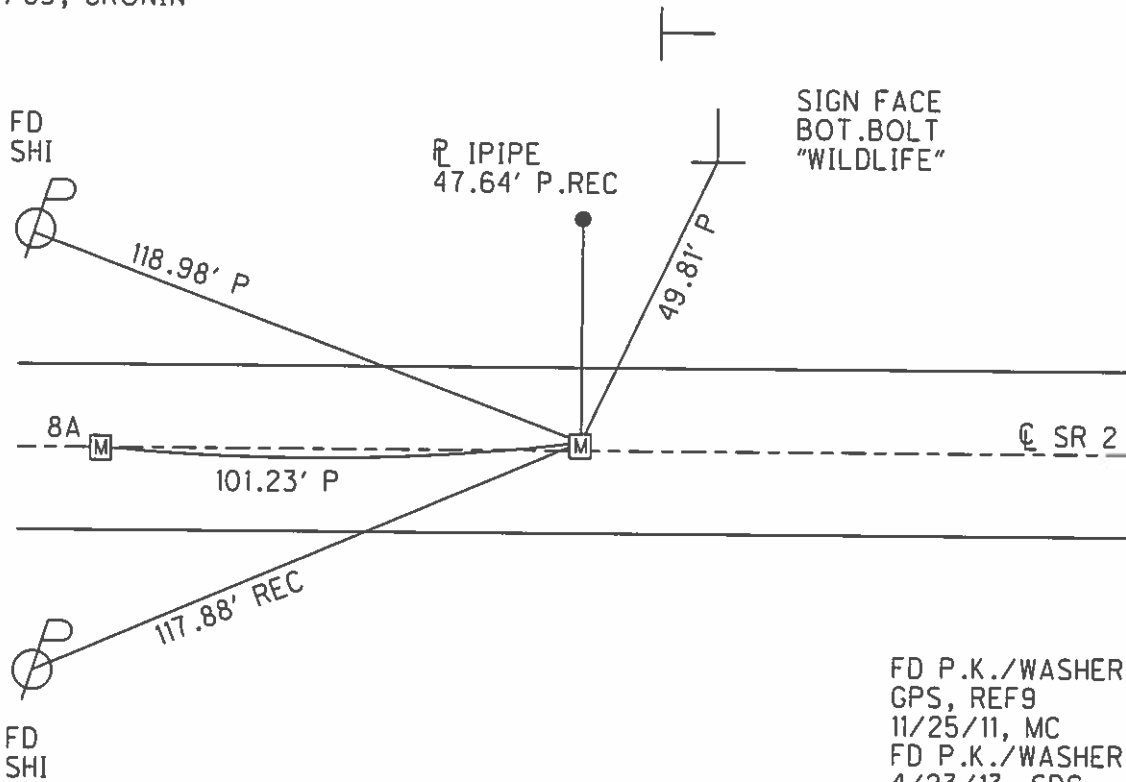
O.D.O.T. DISTRICT 2 SURVEY OFFICE (USE ONLY)

PERSONNEL	REFERENCE NO.	9	SHEET	16	OF	38
NOTES	RHOADES	DATE	10/1/15	ROUTE	SR 2	
H.C.	O'DONNELL	WEATHER	CLOUDY	COUNTY	OTTAWA	
R.C.	RHOADES	TEMP.	59°	TOWNSHIP	BENTON	
				SECTION	35	
				T	8	N
				R	14	E

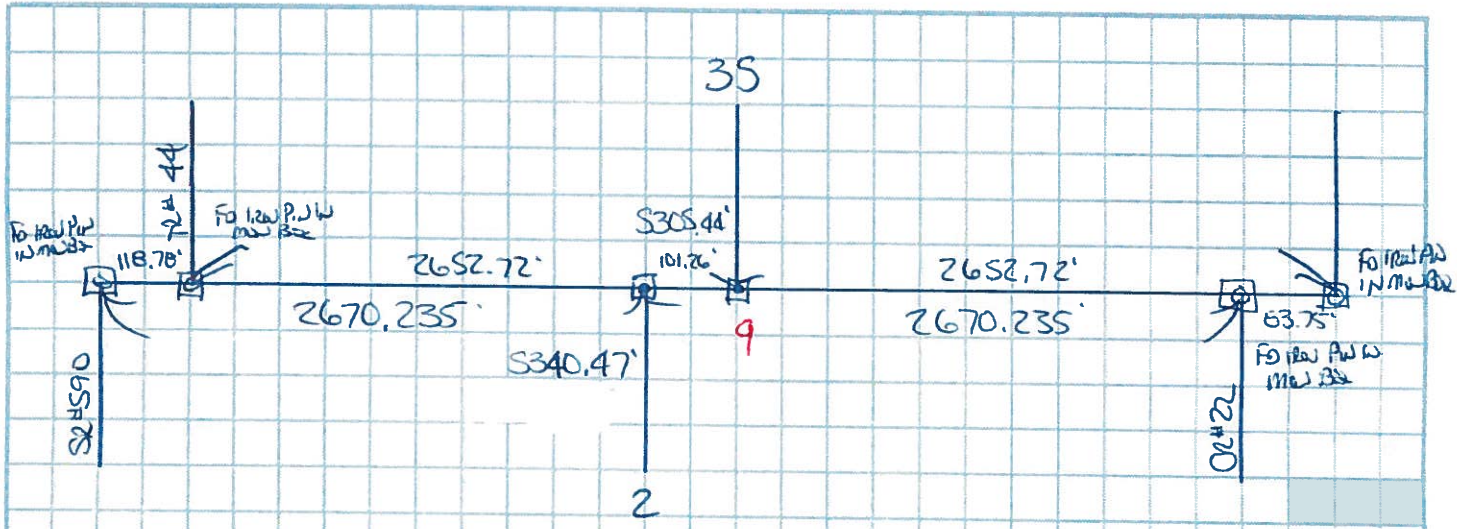
TYPE MONUMENT MONBOX
 ON SURFACE - ~~BELOW~~ ON _____
 LEFT - ☉ PAV'T - ~~RIGHT~~ 1'
11.7' TO LT EDGE PAVEMENT
 S.L.M. 196+55.78
 GRID: NORTHING: 706579.353 EASTING: 1773872.430



RECORD:
 SET P.K./WASHER
 ATOP P.K./WASHER
 ATOP "+" CUT IN CONC.
 1/4/83, CRONIN



FD P.K./WASHER
 GPS, REF9
 11/25/11, MC
 FD P.K./WASHER
 4/23/13, SDC
 MON.BOX SET
 W/ 1" IPIN
 GPS, NEWREF9
 10/1/15, JFO



S/4 Post Sec 35 - ESTABLISH A LINE BETWEEN SE CORNER & SW CORNER
SEC 35 TO N R14E USING SINGLE PROPORTIONATE MEASUREMENT

N = 706,579.3294 E = 1,773,872.4133

N/4 Post Sec 2 - ESTABLISH A LINE BETWEEN SE CORNER & SW CORNER SEC 2 TO N14E
USING SINGLE PROPORTIONATE MEASUREMENT

N = 706,581.4072 E = 1,773,771.1697

NEED TO SET IRON PIN IN MOUNTAIN BOX @ S/4 POST BETWEEN SEC 35 TO N14E
@ N/4 POST BETWEEN SEC 2 TO N14E

2 PINS & BOXES NEEDED

County Ottawa S.R.#2

Date 1/4/83

Township Benton

Weather sunny - windy

Section 35

Temp. 35°

T8N, R14E

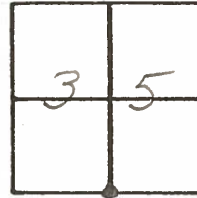
Personnel Cronin

Ripple

Geyman

Barbour

9



196 +
 set P.K. & washer atop
 P.K. & washer atop 'x' cut in
 conc.

I. Pipe P/L
 47.69
 Plumb

104.47
 Plumb

15' conc. pipe
 cut in conc. pipe

S.R.#2

PERSONNEL	TITLE	PERSONNEL	TITLE	COUNTY	DATE	WEATHER	TEMP.
Schneider		Redding		Ottawa	5-15-68	Partly - Cloudy	80°
Mosser				S. R. 2			
Barbour				SEC. Lucas Co. Line - East			
Potts							

DESCRIPTION Ties for Control Points JOB NO. _____

