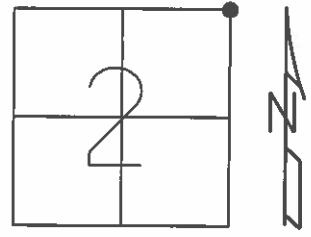


O.D.O.T. DISTRICT 2 SURVEY OFFICE (USE ONLY)

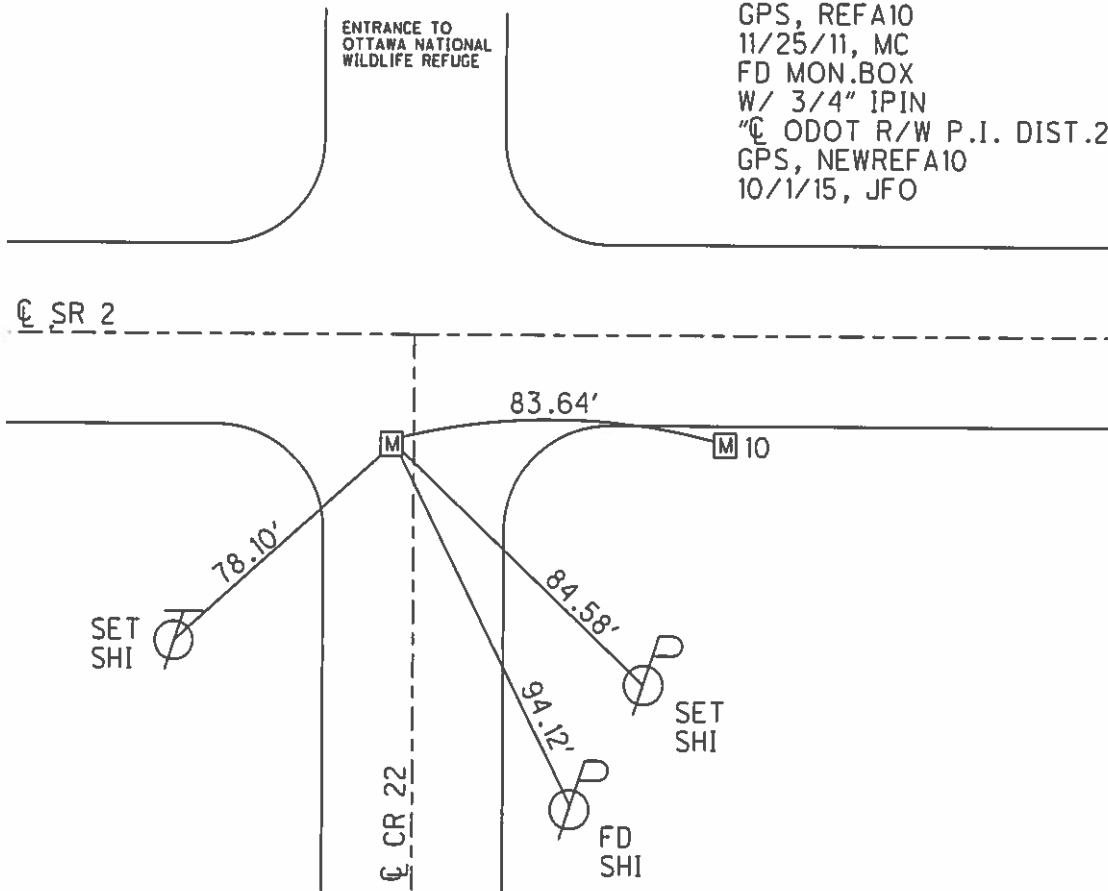
| | | | | | |
|-----------|---------------|---------|---------|----------|------------|
| PERSONNEL | REFERENCE NO. | 9 A | SHEET | 17 OF | 38 |
| NOTES | RHOADES | DATE | 4/23/13 | ROUTE | SR 2 |
| H.C. | CODER | WEATHER | CLEAR | COUNTY | OTTAWA |
| R.C. | LAU | TEMP. | 65° | TOWNSHIP | BENTON |
| | HOMAN | | | SECTION | 2 |
| | ROUSOS | | | T | 7 N R 14 E |

TYPE MONUMENT MON.BOX
 ON SURFACE - ~~BELOW~~ ON _____
~~LEFT~~ - CL PAV'T - RIGHT 17'±
 - TO - EDGE PAVEMENT
 S.L.M. 222+24.71



GRID: NORTHING: 706526.213 EASTING: 1776441.104

RECORD: P.I.
 STA. 222+15.10
 SET P.K./WASHER
 ATOP BRASS MON.
 2 1/2" BELOW SURF.
 1/4/83, CRONIN
 FD MON.BOX
 GPS, REFA10
 11/25/11, MC
 FD MON.BOX
 W/ 3/4" IPIN
 "CL ODOT R/W P.I. DIST.2"
 GPS, NEWREFA10
 10/1/15, JFO



Q.D.O.T. DISTRICT 2 SURVEY OFFICE

Sht. 10 of

County Ottawa S.R. # 2

Date 1/4/83

Township Benton

Weather sunny-windy

Section 2

Temp. 35°

T7N, R14E

Personnel Aronin

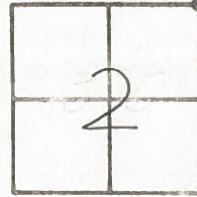
Ripple

Geyman

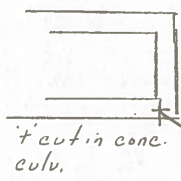
Barbour

10

9A



S.E. 1/4 Sec. 35



83.57 Meas. - 83.22 Rec.

222+15.10
set P.K. & washer at top
brass monument (2 1/2"
below surface)

67.40'

70.47'

94.09'

Co. Rd. #22

79.74'

5.S.R. #27

PERSONNEL TITLE PERSONNEL TITLE

Schneider

Potts

COUNTY Ottawa

DATE 5-15-68

Mosser

S. R. 2

WEATHER Fair

Barbour

SEC. Lucas Co. Line-East

TEMP. 80°

Redding

DESCRIPTION

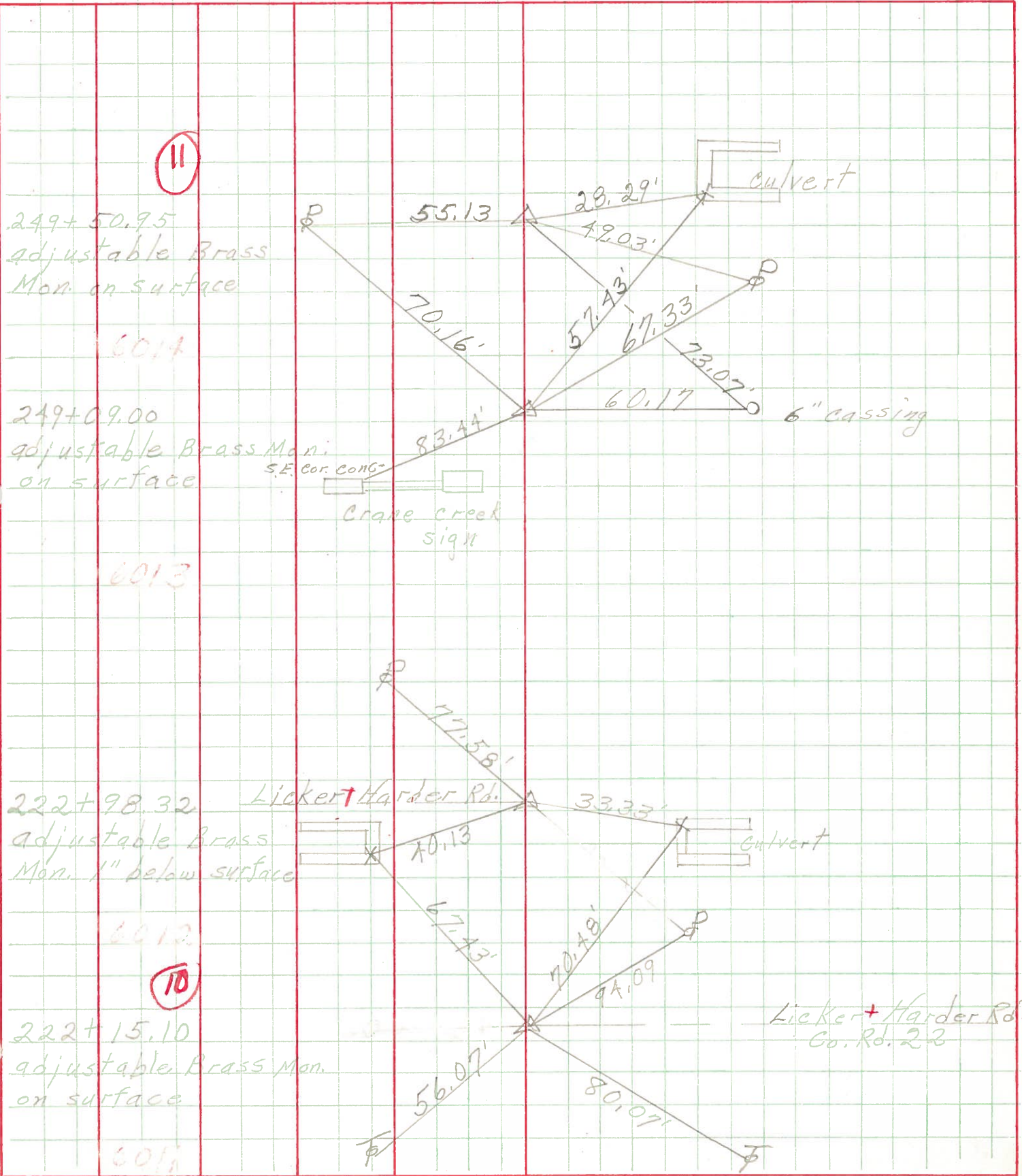
Ties for central points

JOB NO.

LEFT

CENTER LINE

RIGHT



11

6014

6013

6012

10

6011