

O.D.O.T. DISTRICT 2 SURVEY OFFICE (USE ONLY)

PERSONNEL	REFERENCE NO.	10	SHEET	18	OF	38
NOTES	RHOADES	DATE	4/23/13	ROUTE	SR 2	
H.C.	CODER	WEATHER	CLEAR	COUNTY	OTTAWA	
R.C.	LAU	TEMP.	65°	TOWNSHIP	BENTON	
	HOMAN			SECTION	35	
	ROUSOS					

T 8 N R 14 E

TYPE MONUMENT MON.BOX

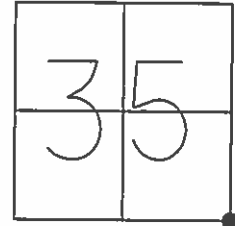
ON SURFACE - ~~BELOW~~ ON

~~LEFT~~ - CL PAV'T - RIGHT 17'±

5.1' RT TO RT EDGE PAVEMENT

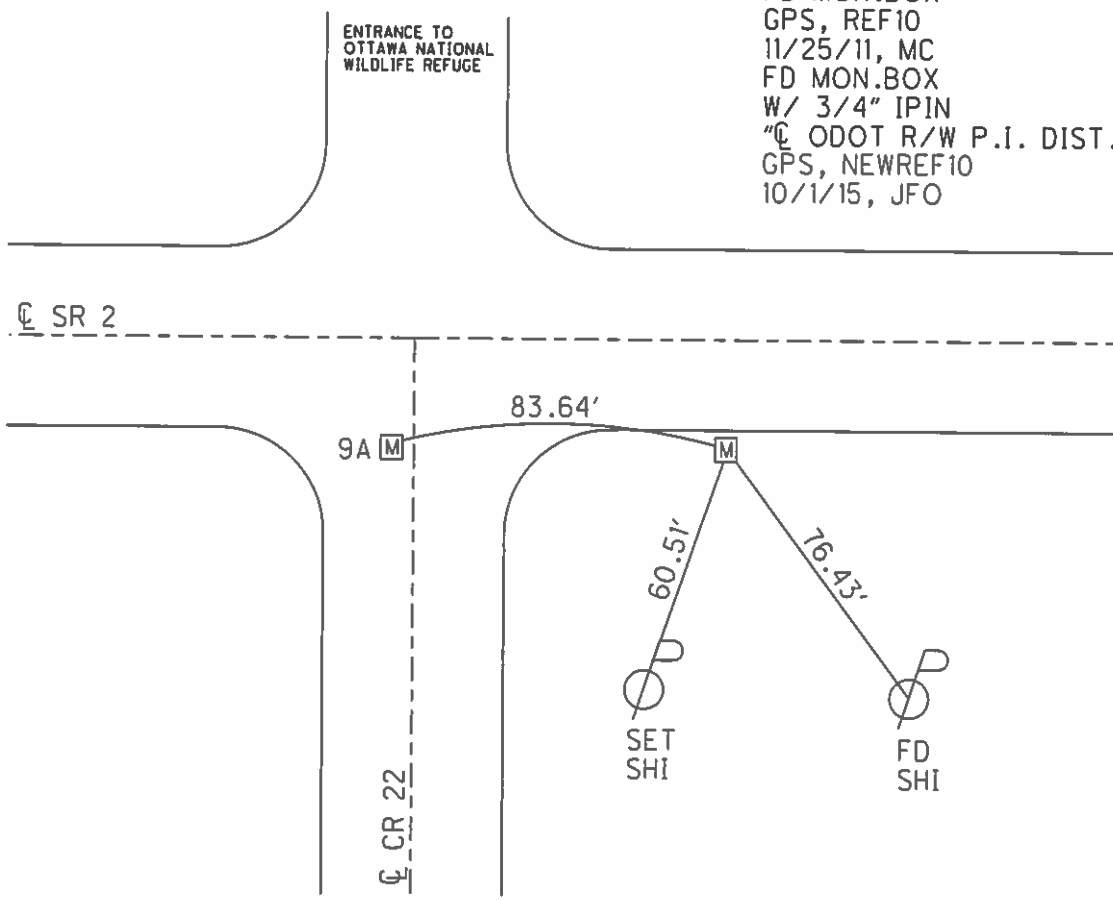
S.L.M. 223+08.46

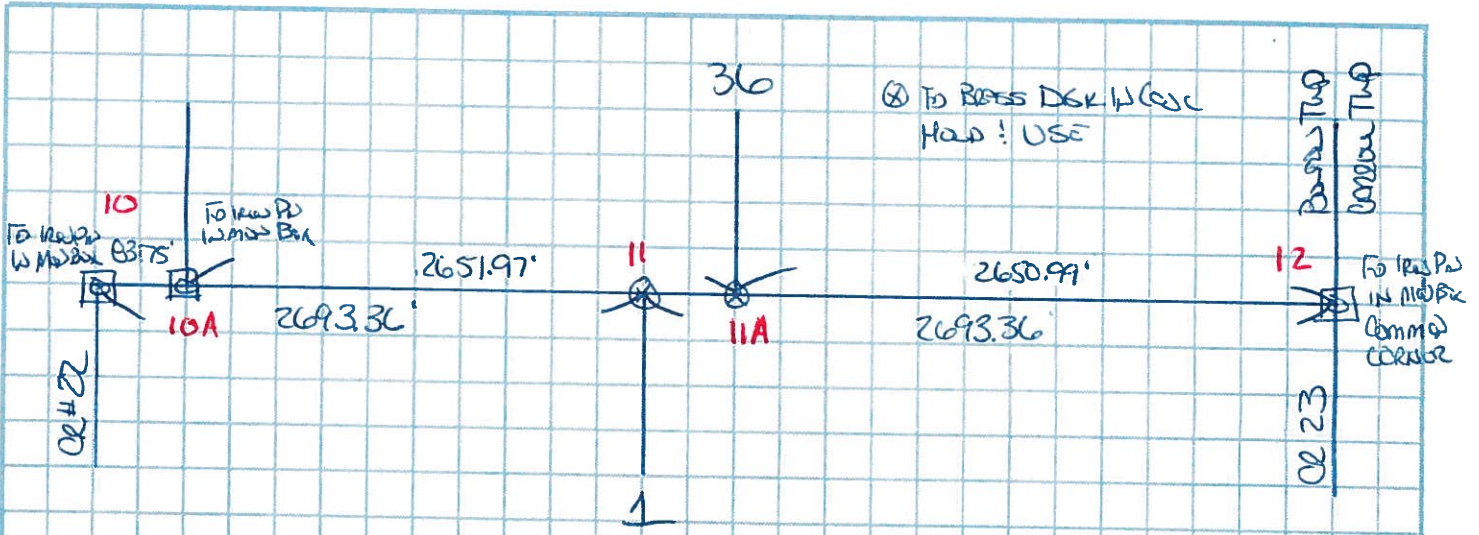
GRID: NORTHING: 706524.831 EASTING: 1776524.729



RECORD: P.I.
 STA. 222+98.77
 SET P.K./WASHER
 ATOP BRASS MON.
 2 1/2" BELOW SURF.
 1/4/83, CRONIN
 FD MON.BOX
 GPS, REF10
 11/25/11, MC
 FD MON.BOX
 W/ 3/4" IPIN
 "CL ODOT R/W P.I. DIST.2"
 GPS, NEWREF10
 10/1/15, JFO

ENTRANCE TO
 OTTAWA NATIONAL
 WILDLIFE REFUGE





HOLD & USE FO. BRASS DISKS AS SHOWN

S 1/4 POST SEC 36 - N = 700,478.472 E = 1,779,134.306

N 1/4 POST SEC 1 - N = 700,477.936 E = 1,779,176.252

NEED TO SET IRON PIPE & MOUNT BOX @ S 1/4 POST BOUND SEC 36 TOW N 1/4 E
 @ N 1/4 POST BOUND SEC 1 TOW N 1/4 E

* BRASS DISKS ~~WILL~~ ARE
 0.53' & 0.50' BELOW
 SURFACE

2 PINS & BOXES NEEDED
 OR
 2 MODIFIED BOXES

O.D.O.T. DISTRICT 2 SURVEY OFFICE

PERSONNEL _____ REFERENCE NO. 10 A SHEET _____ OF _____

NOTES CORDES

H.C. HUSS

R.C. CANTERBURY

BARNHISEL III

DATE 3-22-96

WEATHER CLOUDY

TEMP. +25°F

ROUTE 2

COUNTY OTTAWA

TOWNSHIP BENTON

SECTION 35

T8N R14E

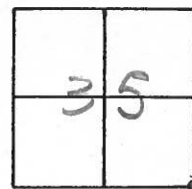
TYPE MONUMENT PK + WASHER

ON SURFACE - BELOW

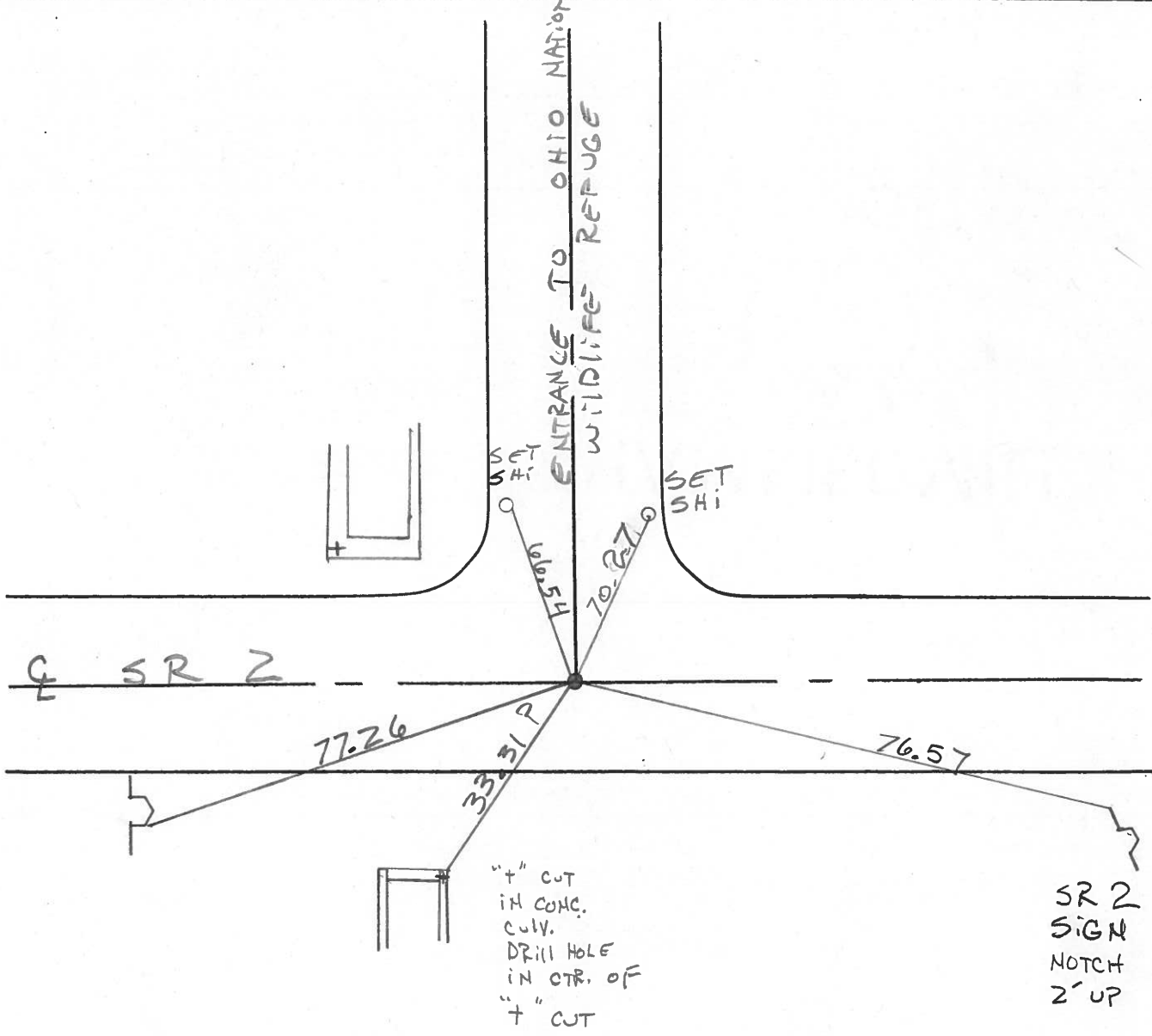
~~LEFT~~ - PAV'T. - RIGHT

11.8 TO RT EDGE PAVEMENT

S.L.M. 222+97.72



ENTRANCE TO OHIO NATIONAL WILDLIFE REFUGE



SR 2
SIGN
NOTCH
2' UP

QD.O.T. DISTRICT 2 SURVEY OFFICE

Sht. 11 of

County Ottawa S.R. # 2

Date 1/4/83

Township Benton

Weather sunny

Section 35

Temp. 35°

T8N, R14E

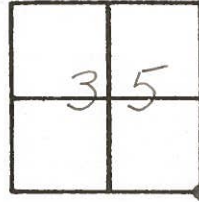
Personnel Cronin

Ripple

Geyman

Barbour

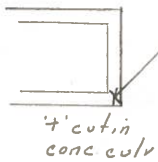
10-A



TO OHIO NATIONAL WILDLIFE REFUGE

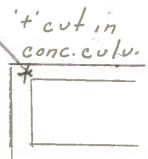
222+98.32

set P.K. & washer atop brass monument (2 1/2" below surface)



4' cut in conc. culv

40.16 Plumb



4' cut in conc. culv.

33.33 Plumb

83.57 Meas. 83.22 Rec.

Cor Rd. #22

S.S. #22

PERSONNEL TITLE PERSONNEL TITLE

Schneider Potts

COUNTY Ottawa DATE 5-15-68

Mosser

S. R. 2 WEATHER Fair

Barbour

SEC. Lucas Co. Line-East TEMP. 80°

Redding

DESCRIPTION Ties for control points JOB NO.

LEFT CENTER LINE RIGHT

