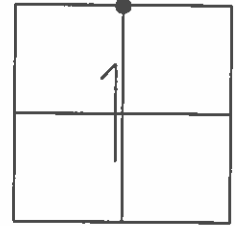


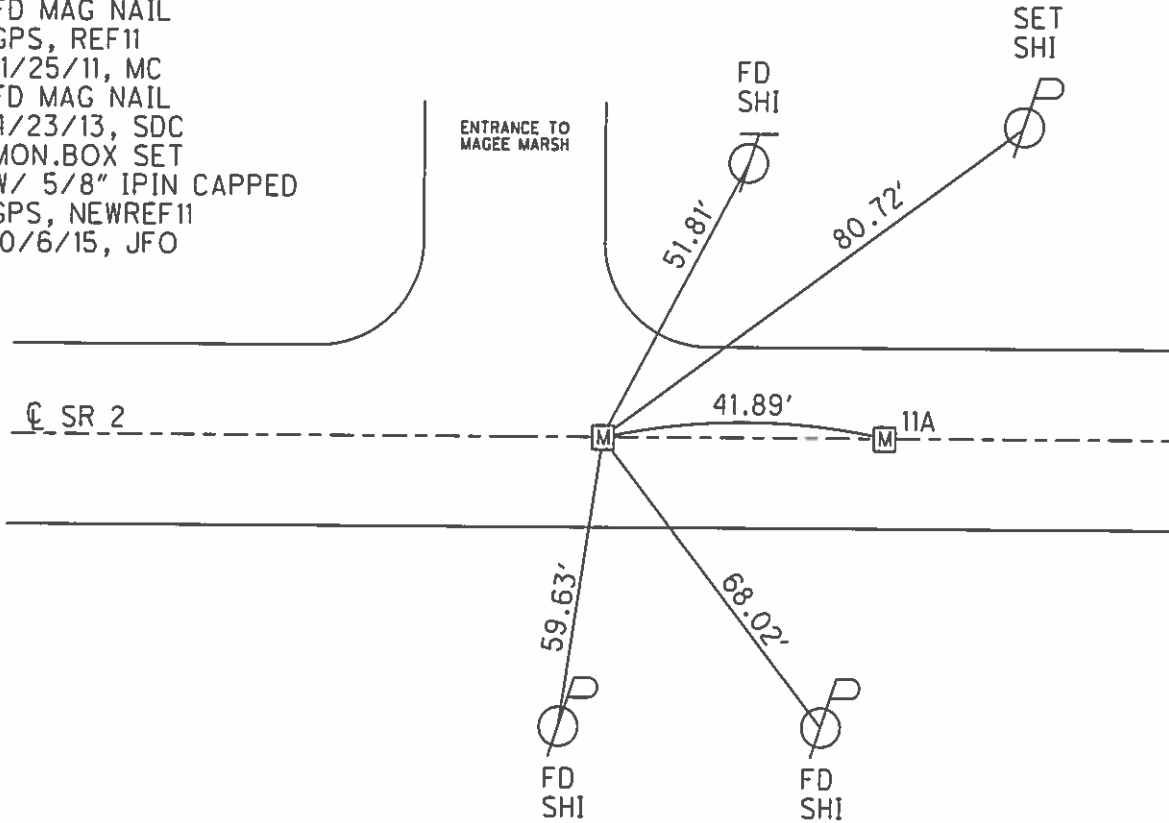
O.D.O.T. DISTRICT 2 SURVEY OFFICE (USE ONLY)

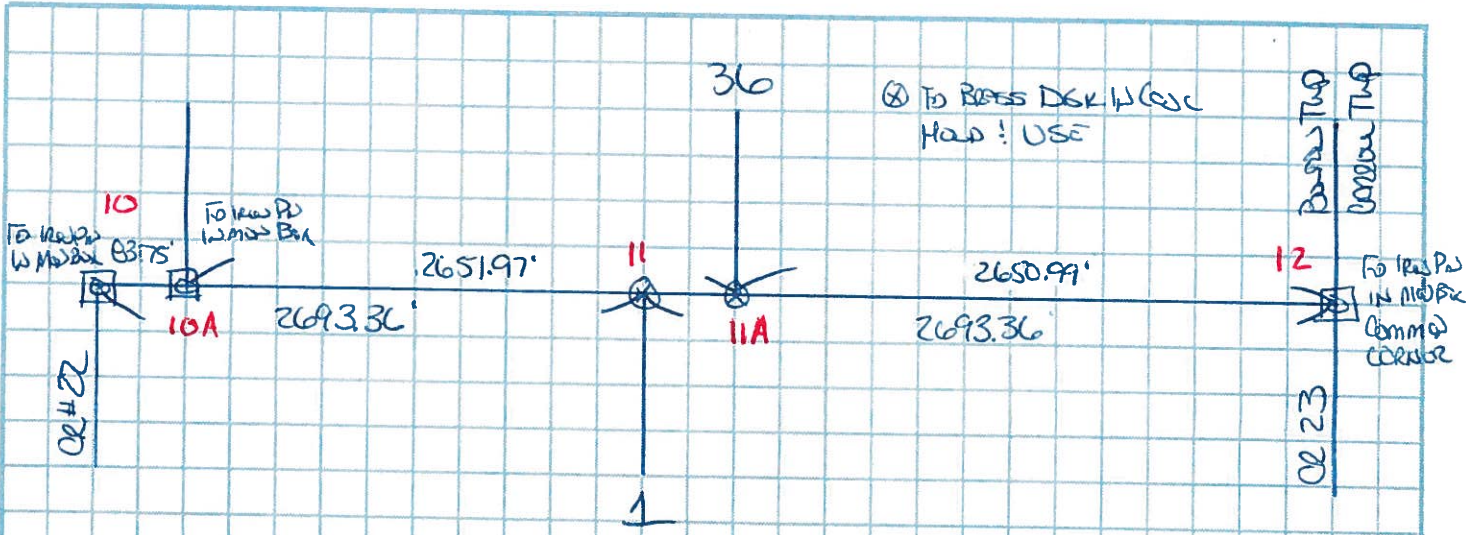
PERSONNEL	REFERENCE NO.	11	SHEET	19	OF	38
NOTES	RHOADES	DATE	10/6/15	ROUTE	SR 2	
H.C.	O'DONNELL	WEATHER	CLEAR	COUNTY	OTTAWA	
R.C.	RHOADES	TEMP.	65°	TOWNSHIP	BENTON	
				SECTION	1	
				T	7	N
				R	14	E

TYPE MONUMENT MONBOX
 ON SURFACE - ~~BELOW~~ ON
 LEFT - ☉ PAV'T - RIGHT ON
18.2' TO RT EDGE PAVEMENT
 S.L.M. 249+18.53
 GRID: NORTHING: 706478.412 EASTING: 1779134.380



RECORD: P.I.
 STA. 249+09
 SET P.K./WASHER
 ATOP BRASS MON.
 2 1/2" BELOW SURF.
 1/5/83, CRONIN
 FD MAG NAIL
 GPS, REF11
 11/25/11, MC
 FD MAG NAIL
 4/23/13, SDC
 MON.BOX SET
 W/ 5/8" IPIN CAPPED
 GPS, NEWREF11
 10/6/15, JFO





HOLD & USE FO. BRASS DISKS AS SHOWN

S 1/4 POST SEC 36 - N = 700,478.472 E = 1,779,134.306

N 1/4 POST SEC 1 - N = 700,477.936 E = 1,779,176.252

NEED TO SET IRON PIPE & MONUMENT BOX @ S 1/4 POST BOUND SEC 36 TOWARD E
@ N 1/4 POST BOUND SEC 1 TOWARD E

* BRASS DISKS ~~WILL~~ ARE
0.53' & 0.50' BELOW
SURFACE

2 PINS & BOXES NEEDED
OR
2 MODIFIED BOXES

County Ottawa S.R.#2

Date 1/5/83

Township Benton

Weather overcast - windy

Section 1

Temp. 32°

T2N, R14E

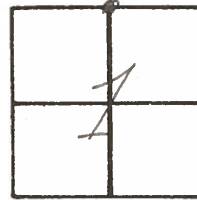
Personnel Cronin

Ripple

Geyman

Barbour

11



5 1/4 Post-Sec. 36

51.83

40.90 Meas - 40.95 Rec.

67.25

59.83

Elec. Drop

249+09.00

set P.K. & washer atop
brass monument - (2 1/2"
below surface)

S.R.#2

PERSONNEL TITLE PERSONNEL TITLE

Schneider

Potts

COUNTY

Ottawa

DATE

5-15-68

Mosser

S. R.

2

WEATHER

Fair

Barbour

SEC.

Lucas Co. Line-East

TEMP.

80°

Redding

DESCRIPTION

Ties for Control Points

JOB NO.

LEFT

CENTER LINE

RIGHT

