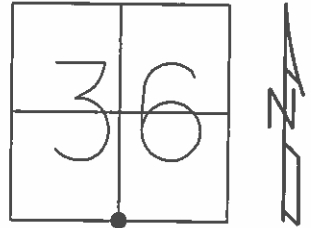


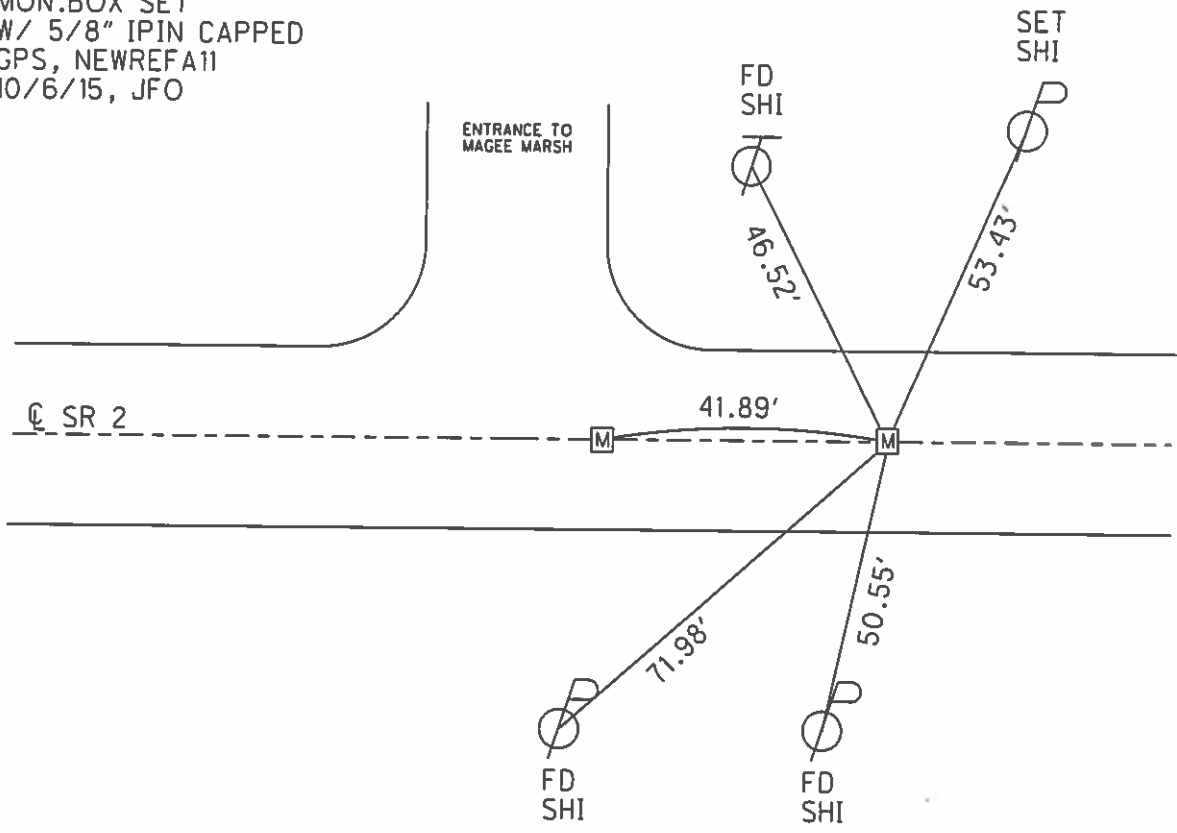
O.D.O.T. DISTRICT 2 SURVEY OFFICE (USE ONLY)

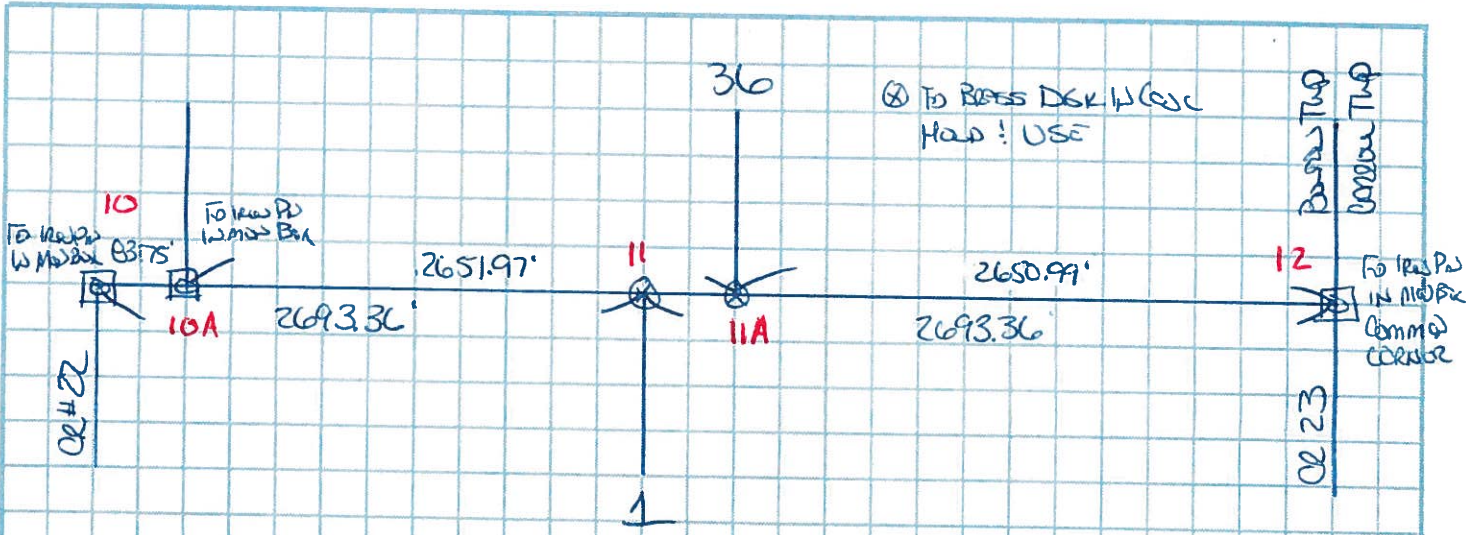
PERSONNEL	REFERENCE NO.	11 A	SHEET	20 20 38	
NOTES	RHOADES	DATE	4/23/13	ROUTE	SR 2
H.C.	O'DONNELL	WEATHER	CLEAR	COUNTY	OTTAWA
R.C.	RHOADES	TEMP.	65°	TOWNSHIP	BENTON
				SECTION	36
				T	8 N R 14 E

TYPE MONUMENT MONBOX
 ON SURFACE - ~~BELOW~~ ON _____
 LEFT - ☉ PAV'T - RIGHT ON _____
18.0' TO RT EDGE PAVEMENT
 S.L.M. 249+60.43
 GRID: NORTHING: 706477.909 EASTING: 1779176.317



RECORD: P.I.
 FD P.K./WASHER
 GPS, REFA11
 11/25/11, MC
 FD P.K./WASHER
 4/23/13, SDC
 MON.BOX SET
 W/ 5/8" IPIN CAPPED
 GPS, NEWREFA11
 10/6/15, JFO





HOLD & USE FO. BRASS DISKS AS SHOWN

S 1/4 POST SEC 36 - N = 700,478.472 E = 1,779,134.306

N 1/4 POST SEC 1 - N = 700,477.936 E = 1,779,176.252

NEED TO SET IRON PIPE & MONUMENT BOX @ S 1/4 POST BOUND SEC 36 TOW N 1/4 E
@ N 1/4 POST BOUND SEC 1 TOW N 1/4 E

* BRASS DISKS ~~WILL~~ ARE
0.53' & 0.50' BELOW
SURFACE

2 PINS & BOXES NEEDED
OR
2 MODIFIED BOXES

O.D.O.T. DISTRICT 2 SURVEY OFFICE

PERSONNEL _____

REFERENCE NO. 11A

SHEET _____ OF _____

NOTES CORDES

H.C. HUSS

DATE 3-22-96

ROUTE 2

R.C. CANTERBURY

WEATHER CLOUDY

COUNTY OTTAWA

BARNHISEL II

TEMP. +25°F

TOWNSHIP BENTON

SECTION 36

T&N R 14 E

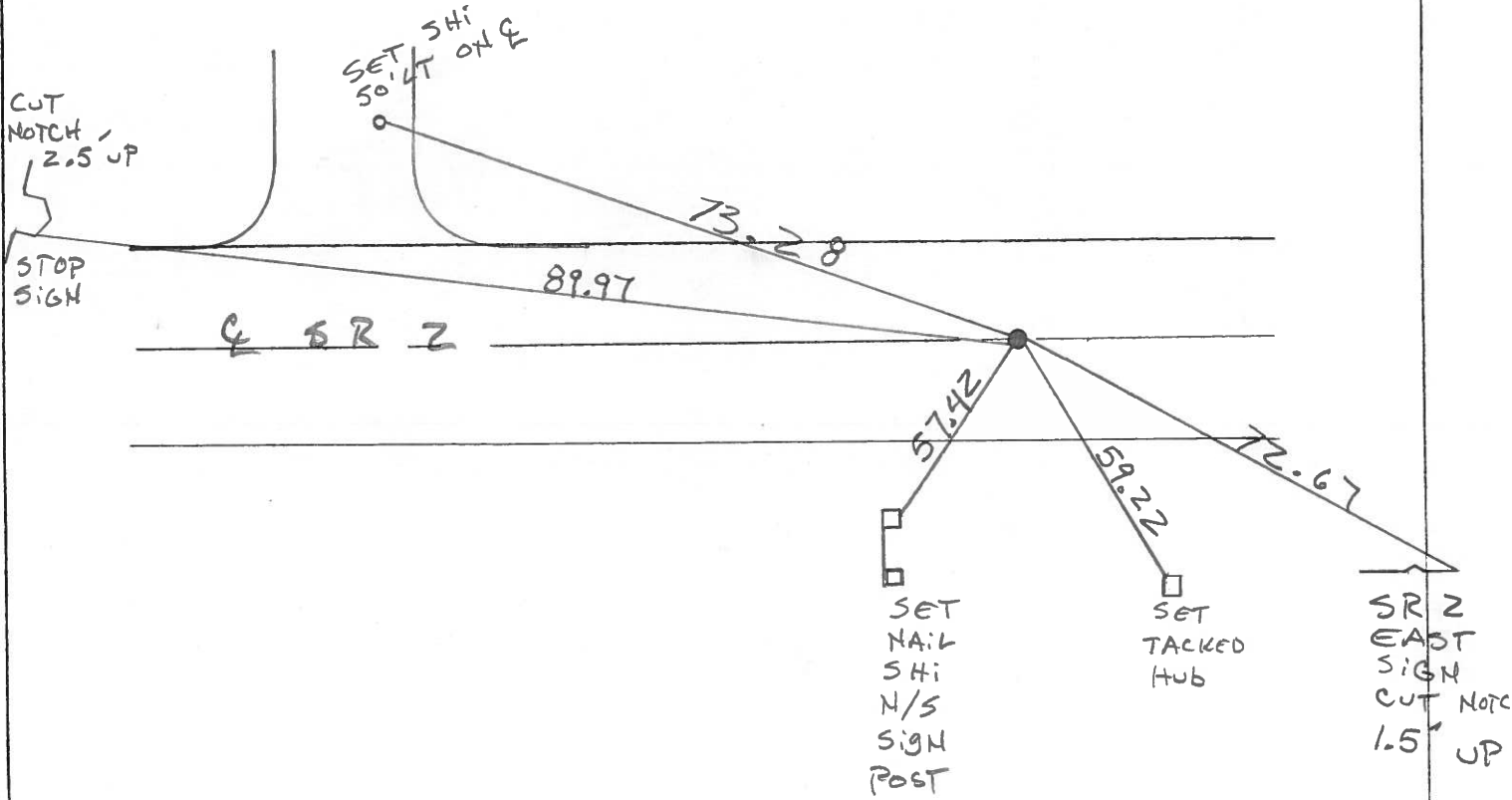
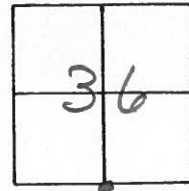
TYPE MONUMENT PK & WASHER

ON SURFACE - BELOW

~~LEFT~~ - Q PAV'T. - RIGHT

11.7 TO LT EDGE PAVEMENT

S.L.M. 249+49.77



County Ottawa - S.R.#2

Date 1/5/83

Township Benton

Weather overcast - windy

Section 36

Temp. 32°

T8N, R14E

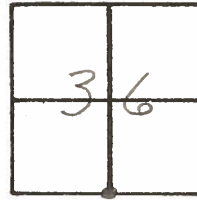
Personnel Cronin

Ripple

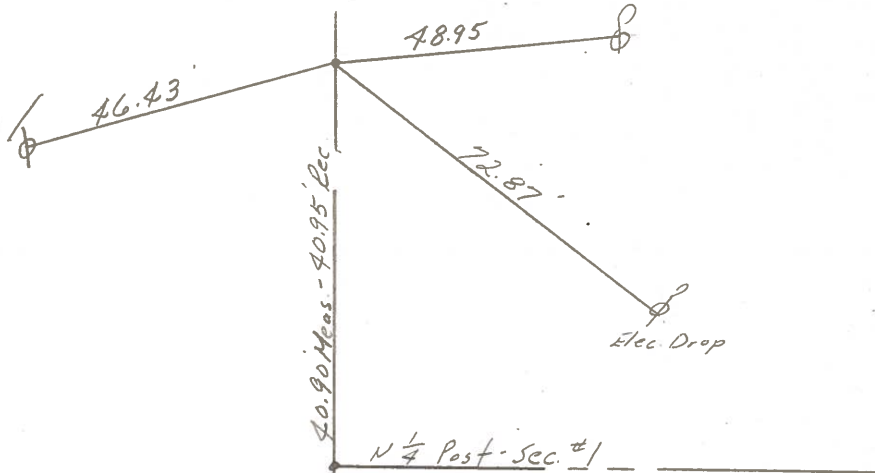
Geyman

Barbour

11-A



249+50.95
set P.K. washer atop
brass monument (2 1/2" t
below surface)



S.R.#2

PERSONNEL TITLE PERSONNEL TITLE

Schneider
Mossar
Barbour
Perding

COUNTY Ottawa DATE 5-15-68

S. R. 2 WEATHER Fair

SEC. Lucas Co. Line-East TEMP. 80°

DESCRIPTION Ties for Control Points LEFT CENTER LINE RIGHT JOB NO.

