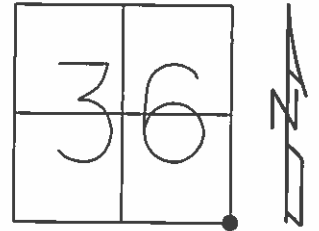


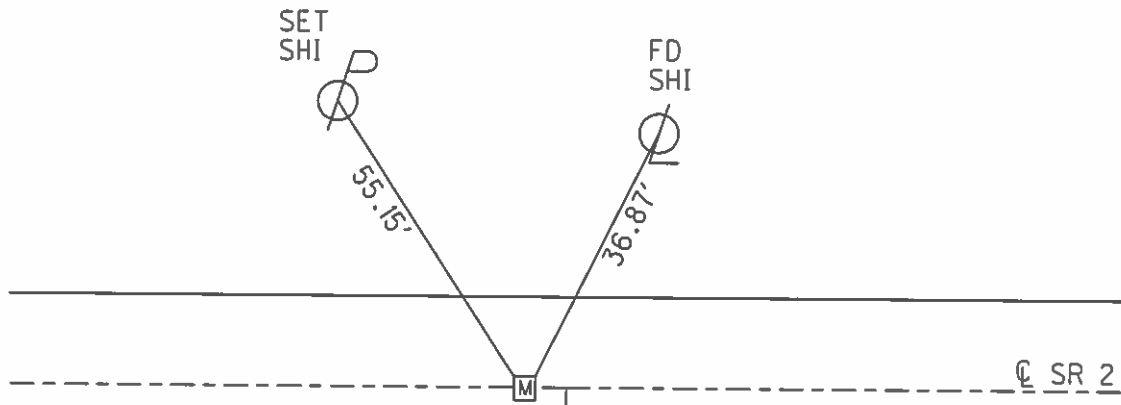
O.D.O.T. DISTRICT 2 SURVEY OFFICE (USE ONLY)

PERSONNEL	REFERENCE NO.	12	SHEET	21	OF	38
NOTES	RHOADES	DATE	4/23/13	ROUTE	SR 2	
H.C.	CODER	WEATHER	CLEAR	COUNTY	OTTAWA	
R.C.	LAU	TEMP.	65°	TOWNSHIP	BENTON	
	HOMAN			SECTION	36	
	ROUSOS			T 8 N	R 14 E	

TYPE MONUMENT MON.BOX
 ON SURFACE - ~~BELOW~~ ON _____
 LEFT - ☉ PAV'T - RIGHT ON _____
15.5' TO LT EDGE PAVEMENT
 S.L.M. 276+11.43
 GRID: NORTHING: 706430.656 EASTING: 1781826.764

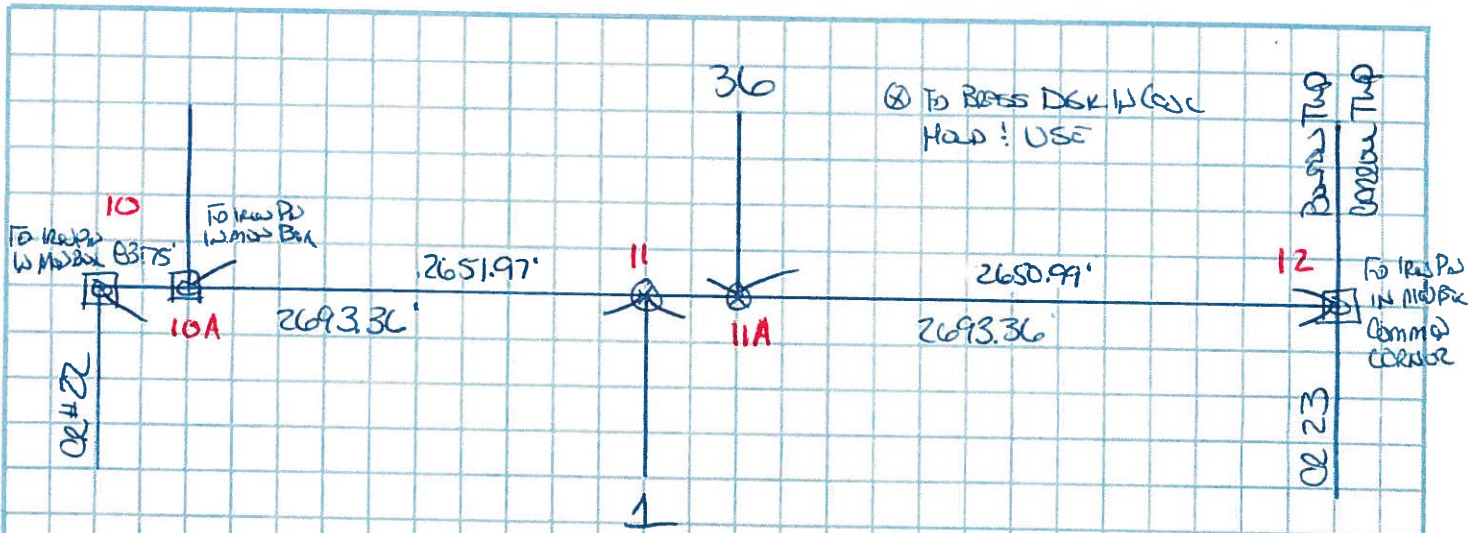


RES#12975



RECORD: P.I.
 STA. 276+02.15
 SET P.K./WASHER
 OVER BRASS MON.
 1/5/83, CRONIN
 FD P.K./WASHER
 3/22/96, MB
 FD MON.BOX
 GPS, REF12
 11/25/11, MC
 FD MON.BOX
 W/ 1" IPIN
 GPS, NEWREF12
 10/6/15, JFO

☉ CR 23
 BENTON-CARROLL RD



HOLD & USE FO. BRASS DISKS AS SHOWN

S 1/4 POST SEC 36 - N = 700,478.472 E = 1,779,134.306

N 1/4 POST SEC 1 - N = 700,477.936 E = 1,779,176.252

NEED TO SET IRON PIPE & MONUMENT BOX @ S 1/4 POST BOUND SEC 36 TOW N 1/4 E
@ N 1/4 POST BOUND SEC 1 TOW N 1/4 E

* BRASS DISKS ~~WERE~~ ARE
0.53' & 0.50' BELOW
SURFACE

2 PINS & BOXES NEEDED

OR

2 MODIFIED BOXES

O.D.O.T. DISTRICT 2 SURVEY OFFICE

PERSONNEL

REFERENCE NO. 12

SHEET OF

NOTES BARNHISEL

H.C. HUSS

DATE 3-22-96

ROUTE 2

R.C. CANTERBURY

WEATHER cloudy

COUNTY OTTAWA

TEMP. +25°

TOWNSHIP BENTON

SECTION 36

T 8 N R 14 E

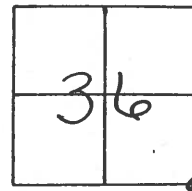
TYPE MONUMENT PK & WASHER

ON SURFACE - ~~BELOW~~ YES

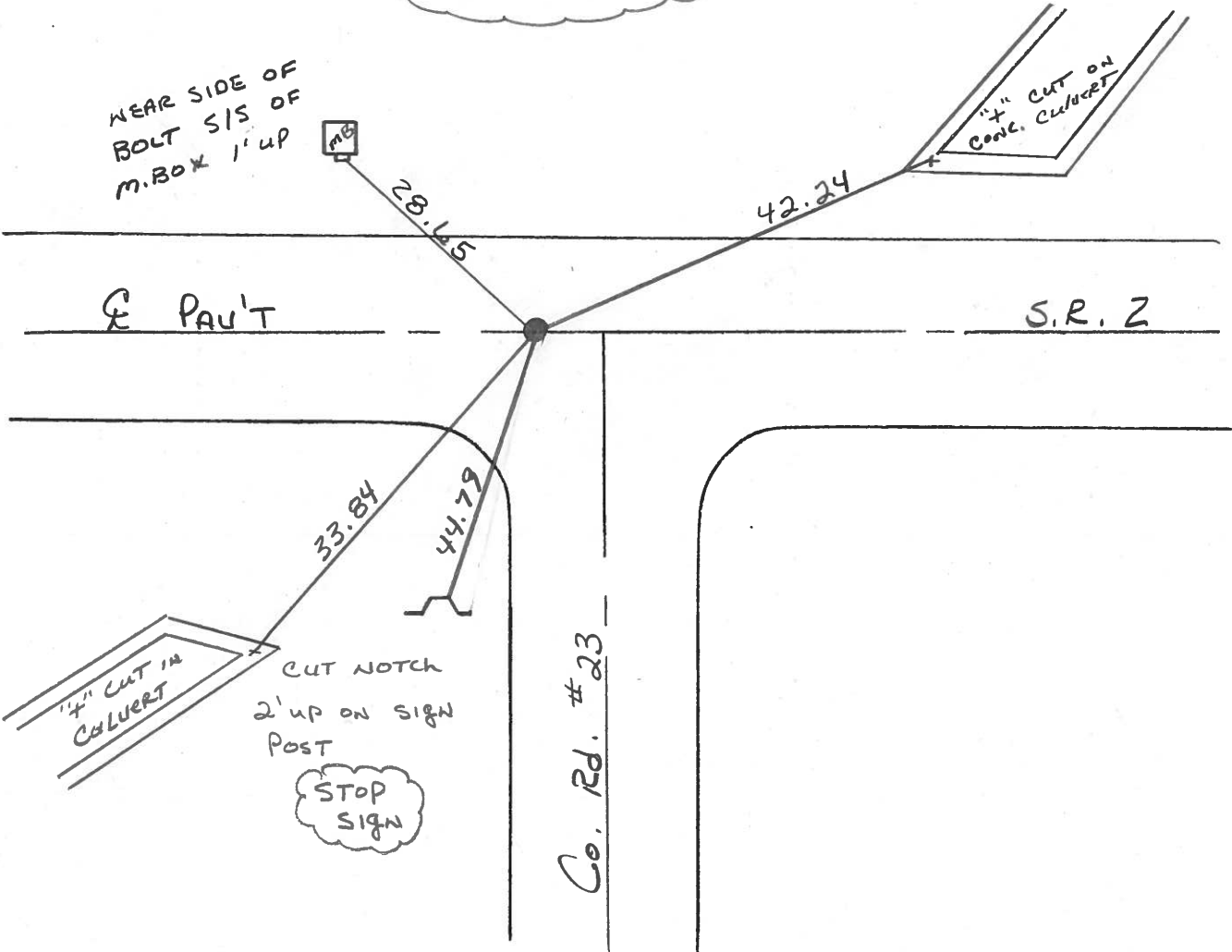
~~LEFT~~ - E PAV'T. - ~~RIGHT~~ YES

12.3 TO LT EDGE PAVEMENT

S.L.M. 276+00.86



RECORD: 276+02.15
SET PK & WASHER OVER
BRASS MONUMENT



County Ottawa 5R#2

Date 1/5/83

Township Benton - Carroll

Weather overcast - windy

Section 1E36 - 6E31

Temp. 32°

T N, R E

Personnel Cronin

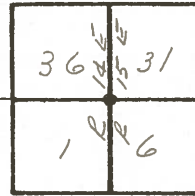
Ripple

Geyman

Barbour

12

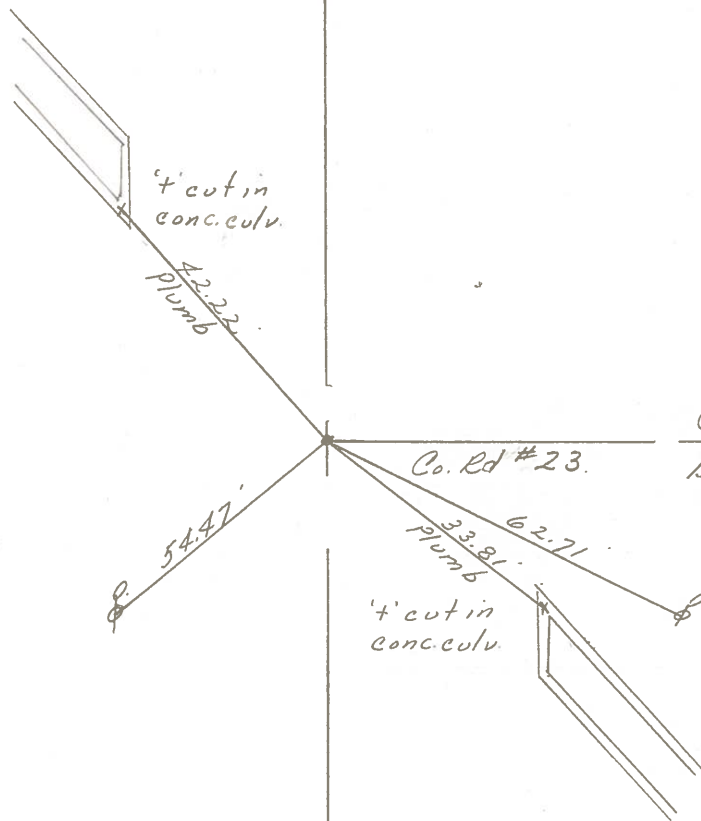
I-8-N
T-7-N



* Assumed this to be a common corner.



276+02.15
set P.K. & washer atop
brass monument (2 1/2" t
below surface)



5R#2

PERSONNEL	TITLE	PERSONNEL	TITLE	COUNTY	DATE
Schneider		Potts		Ottawa	5-15-68
Moisser				S. R. 2	WEATHER Fair
Barbour				SEC. Lucas Co. Line-East	TEMP. 80°
Redding					

DESCRIPTION Ties for Control Points JOB NO. _____

