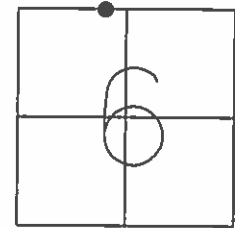


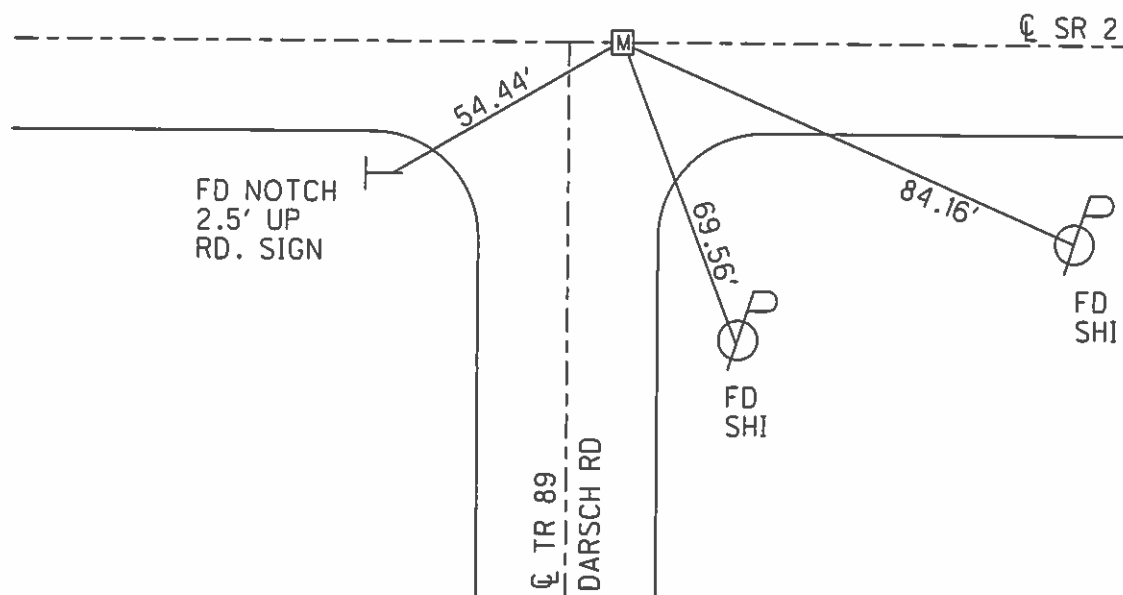
O.D.O.T. DISTRICT 2 SURVEY OFFICE (USE ONLY)

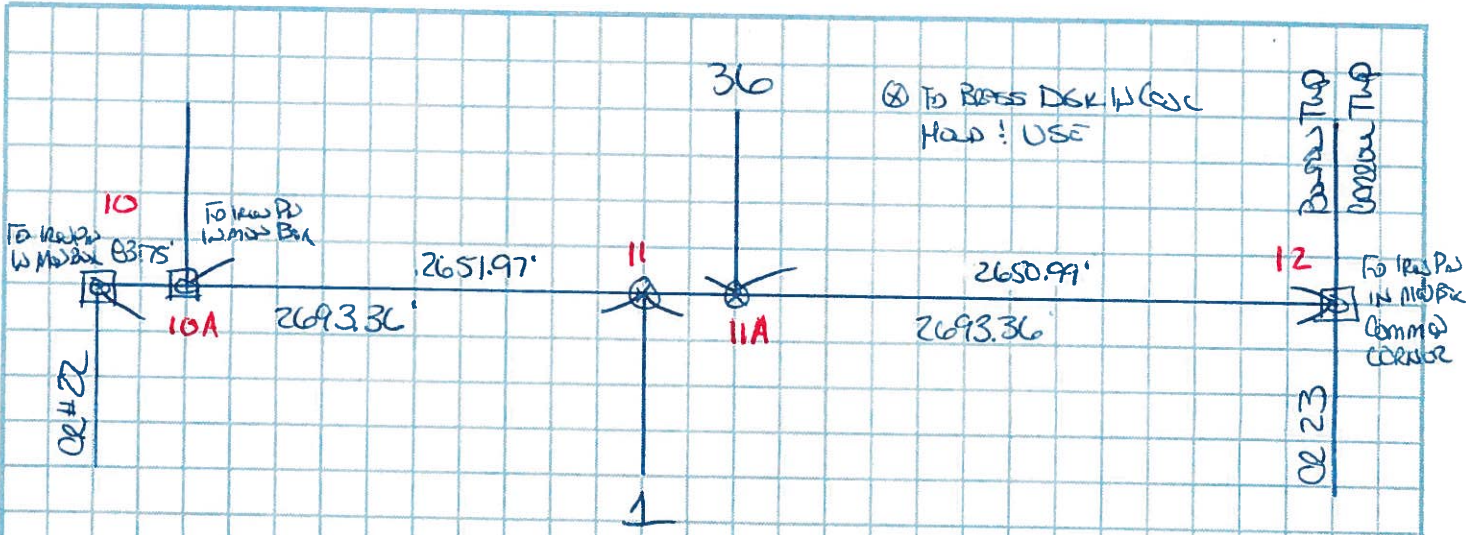
PERSONNEL	REFERENCE NO.	13	SHEET	22	OF	38
NOTES	RHOADES	DATE	10/6/15	ROUTE	SR 2	
H.C.	O'DONNELL	WEATHER	CLEAR	COUNTY	OTTAWA	
R.C.	RHOADES	TEMP.	65°	TOWNSHIP	CARROLL	
				SECTION	6	
				T	7	N
				R	15	E

TYPE MONUMENT MONBOX
 ON SURFACE - ~~BELOW~~ ON
 LEFT - ☉ PAV'T - RIGHT ON
11.6' TO LT EDGE PAVEMENT
 S.L.M. 298+95.10
 GRID: NORTHING: 706406.464 EASTING: 1784110.448



RECORD: P.I.
 STA. 298+86.30
 SET P.K./WASHER
 OVER BRASS MON.
 1/13/83, CRONIN
 FD P.K./WASHER
 3" DOWN
 GPS, REF13
 11/25/11, MC
 FD P.K./WASHER
 4/23/13, SDC
 MON.BOX SET
 W/ 5/8" IPIN CAPPED
 GPS, NEWREF13
 10/6/15, JFO





HOLD & USE FO. BRASS DISKS AS SHOWN

S 1/4 POST SEC 36 - N = 700,478.472 E = 1,779,134.306

N 1/4 POST SEC 1 - N = 700,477.936 E = 1,779,176.252

NEED TO SET IRON PIPE & MONUMENT BOX @ S 1/4 POST BOUND SEC 36 TOW N 1/4 E
@ N 1/4 POST BOUND SEC 1 TOW N 1/4 E

* BRASS DISKS ~~W/~~ ARE
0.53' & 0.50' BELOW
SURFACE

2 PINS & BOXES NEEDED
OR
2 MODIFIED BOXES

County Ottawa S.R. #2

Date 1/13/83

Township Carroll

Weather overcast - windy

Section 6

Temp. 27°

T2N, R15E

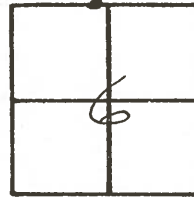
Personnel Cronin

Ripple

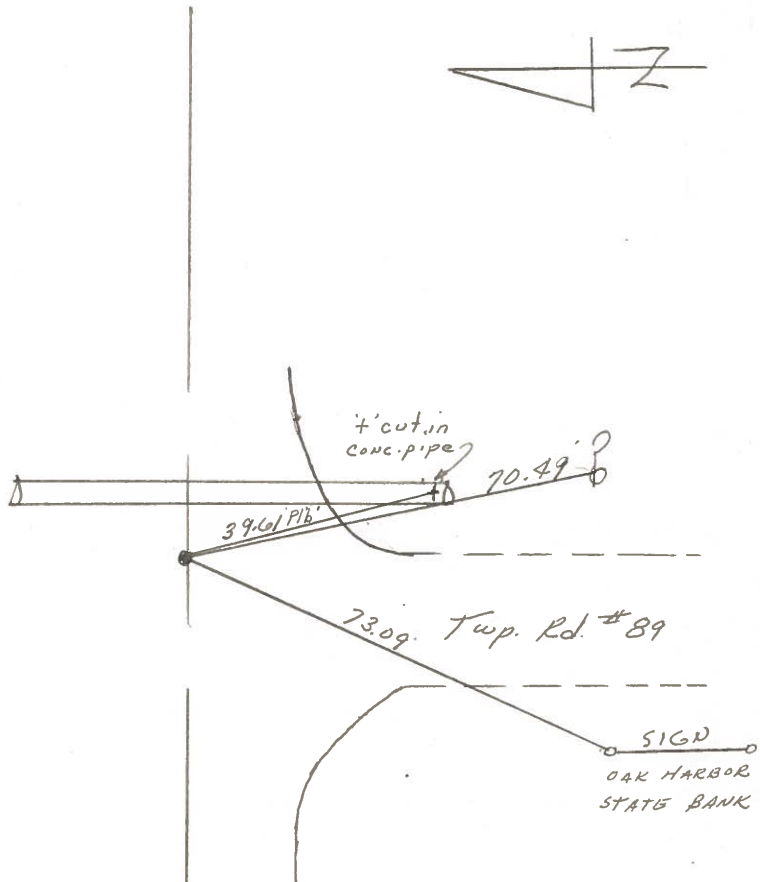
Geyman

Barbour

13



298 + 86.30
set P.K. & washer atop
brass monument



S.R. #27

PERSONNEL	TITLE	PERSONNEL	TITLE	COUNTY	DATE
Schneider		Potts		Ottawa	5-15-68
Moesser				S. R. <u>2</u>	WEATHER <u>Fair</u>
Barbour				SEC. <u>Lucas Co. Line-East</u>	TEMP. <u>80°</u>
Redding					

DESCRIPTION Ties for Control Points JOB NO. _____

