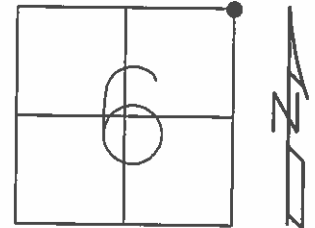


O.D.O.T. DISTRICT 2 SURVEY OFFICE (USE ONLY)

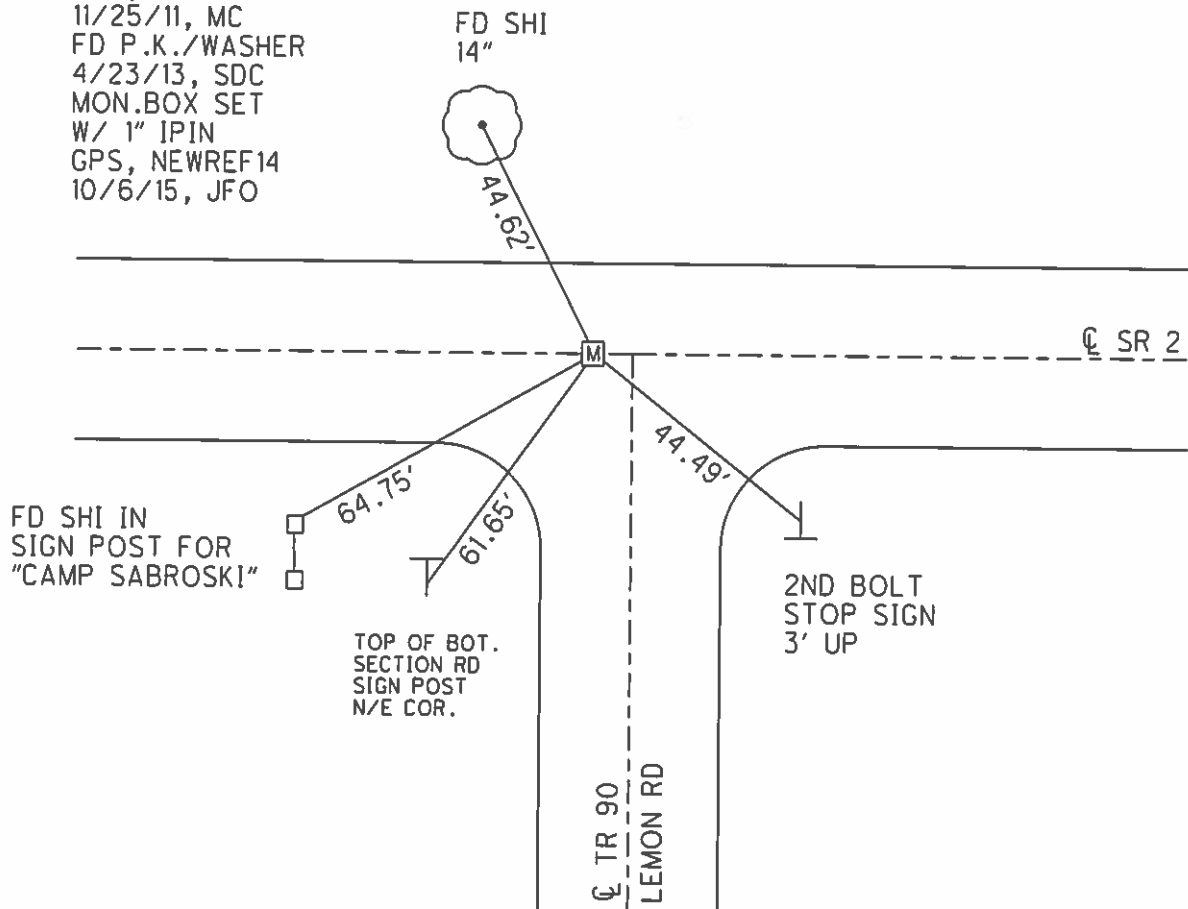
PERSONNEL	REFERENCE NO.	14	SHEET	23	OF	38
NOTES	RHOADES	DATE	10/6/15	ROUTE	SR 2	
H.C.	O'DONNELL	WEATHER	CLEAR	COUNTY	OTTAWA	
R.C.	RHOADES	TEMP.	65°	TOWNSHIP	CARROLL	
				SECTION	6	
				T	7	N
				R	15	E

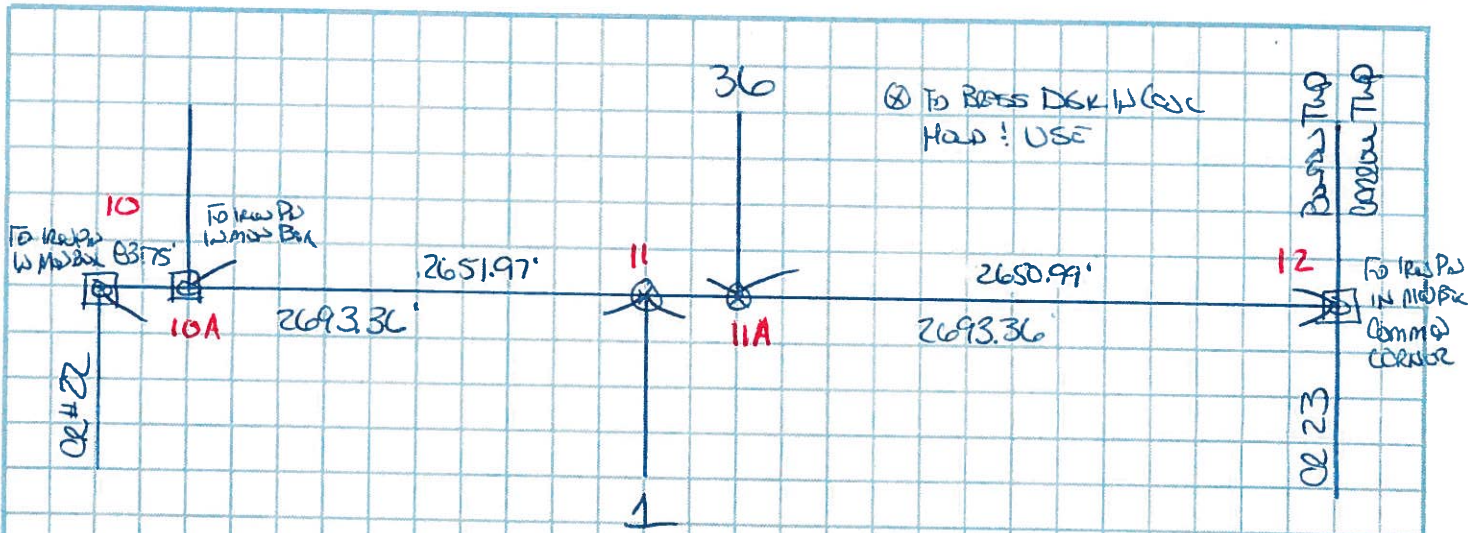
TYPE MONUMENT MONBOX
 ON SURFACE - ~~BELOW~~ ON
 LEFT - ☉ PAV'T - RIGHT ON
12.4' TO LT EDGE PAVEMENT
 S.L.M. 325+63.04



GRID: NORTHING: 706375.052 EASTING: 1786777.974

RECORD: P.I.
 STA. 325+51.95
 SET P.K./WASHER
 OVER BRASS MON.
 1/13/83, CRONIN
 FD P.K./WASHER
 GPS, REF14
 11/25/11, MC
 FD P.K./WASHER
 4/23/13, SDC
 MON.BOX SET
 W/ 1" IPIN
 GPS, NEWREF14
 10/6/15, JFO





HOLD & USE FO. BRASS DISKS AS SHOWN

S 1/4 POST SEC 36 - N = 700,478.472 E = 1,779,134.306

N 1/4 POST SEC 1 - N = 700,477.936 E = 1,779,176.252

NEED TO SET IRON PIPE & MOUNTING BOX @ S 1/4 POST BOUND SEC 36 TOW N 1/4 E
@ N 1/4 POST BOUND SEC 1 TOW N 1/4 E

* BRASS DISKS ~~WILL~~ ARE
0.53' & 0.50' BELOW
SURFACE

2 PINS & BOXES NEEDED
OR
2 MODIFIED BOXES

County Ottawa S.R.#2

Date 1/13/83

Township Carroll

Weather overcast-windy

Section 6

Temp. 27°

T7N, R15E

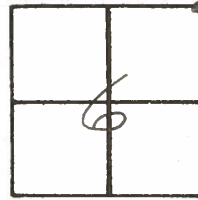
Personnel Aronin

Ripple

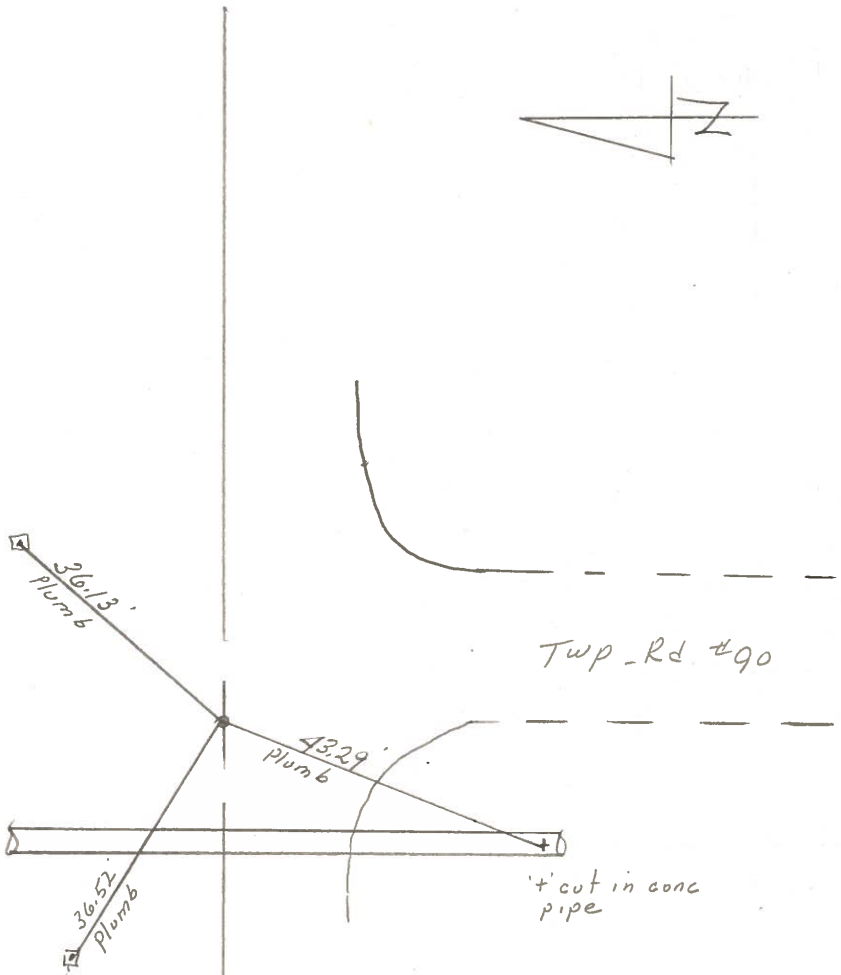
Geyman

Barbour

14



32.5 + 51.95
set P.K. & washer at top
brass monument



S.R.#27

PERSONNEL	TITLE	PERSONNEL	TITLE
<u>Schneider</u>		<u>Potts</u>	
<u>Moasser</u>			
<u>Barbour</u>			
<u>Redding</u>			

COUNTY Ottawa DATE 5-15-68
 S. R. 2 WEATHER Fair
 SEC. Lucas Co. Line-East TEMP. 80°

DESCRIPTION Ties for Control Points JOB NO. _____

