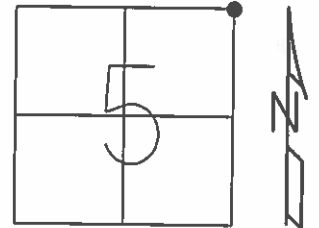


O.D.O.T. DISTRICT 2 SURVEY OFFICE (USE ONLY)

PERSONNEL	REFERENCE NO.	16	SHEET	24	OF	38
NOTES	RHOADES	DATE	10/6/15	ROUTE	SR 2	
H.C.	O'DONNELL	WEATHER	CLEAR	COUNTY	OTTAWA	
R.C.	RHOADES	TEMP.	65°	TOWNSHIP	CARROLL	
				SECTION	5	
				T	7	N
				R	15	E

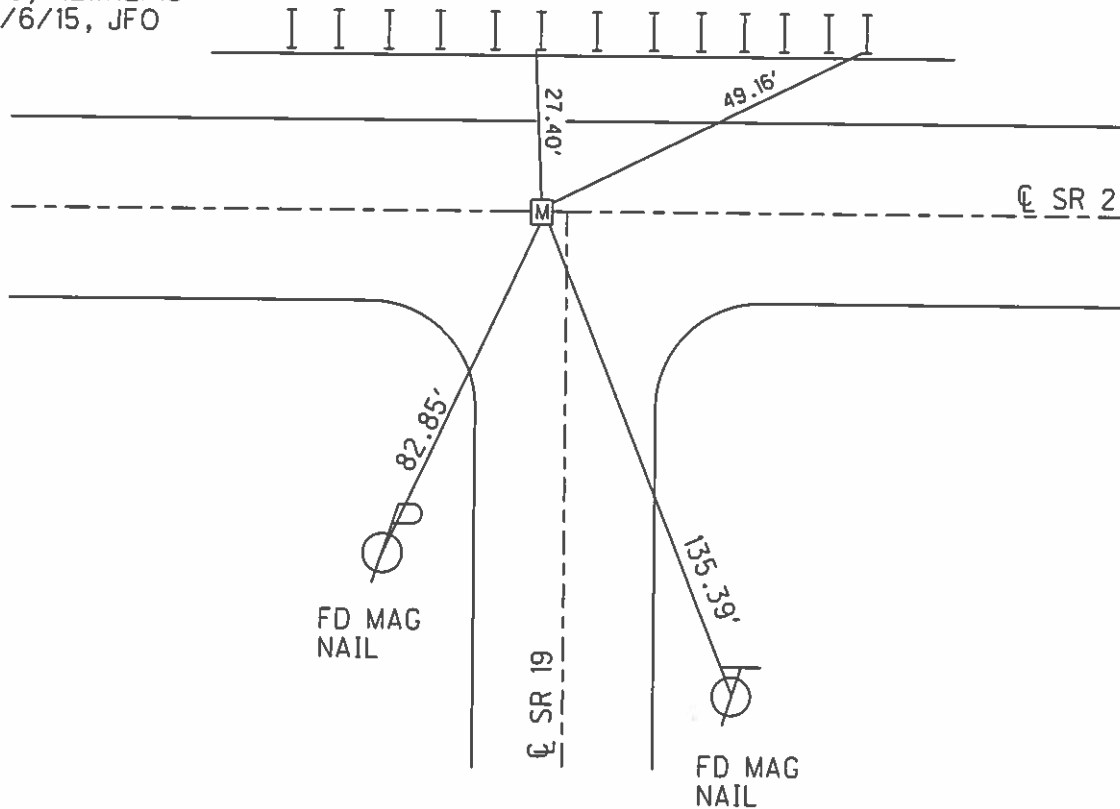
TYPE MONUMENT MON.BOX
 ON SURFACE - ~~BELOW~~ ON _____
 LEFT - ☉ PAV'T - RIGHT ON _____
16.9' TO LT EDGE PAVEMENT
 S.L.M. 377+96.68

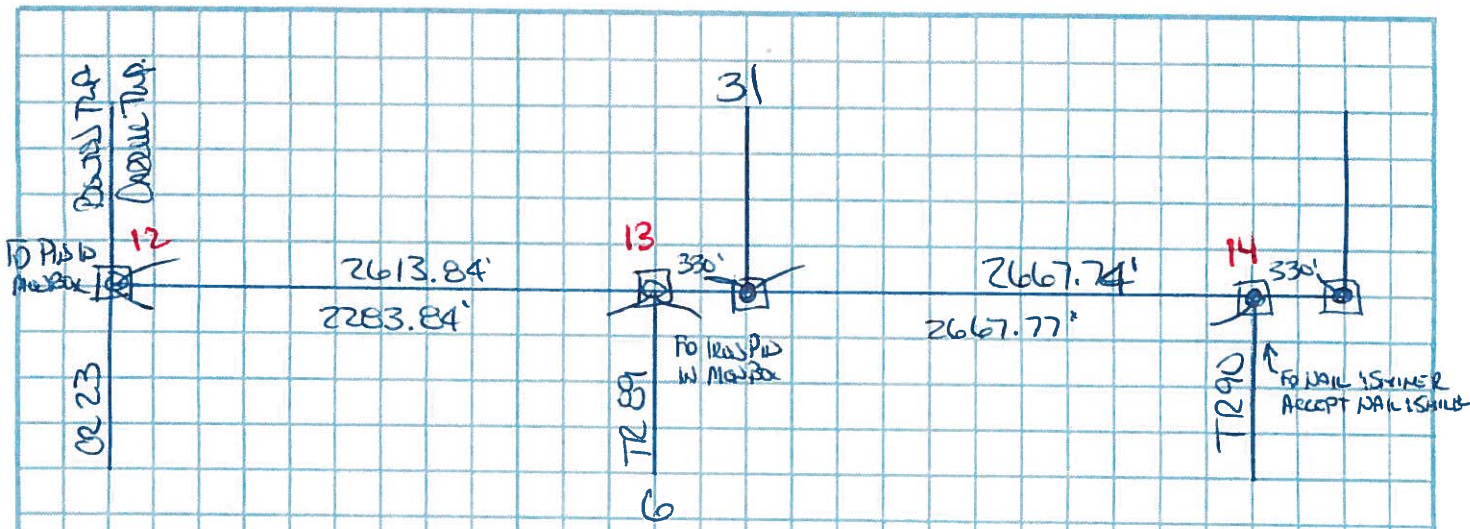


GRID: NORTHING: 706387.743 EASTING: 1792011.657

RECORD: P.I.
 STA. 377+86.94
 SET P.K./WASHER
 ATOP IPIPE
 IN MON.BOX
 1/13/83, CRONIN
 FD MON.BOX
 GPS, REF16
 11/25/11, MC
 MON.BOX SET
 W/ 1" IPIN
 GPS, NEWREF16
 10/6/15, JFO

SET NOTCHES
 ON STEEL GR
 POSTS 1' UP





N 1/4 Post Corner 6 - RAISE MOUNT BOX TO SURFACE

N = 706,406.4720 E = 1,784,110.4180

NE CORNER CORNER 6 - ACCEPT & USE ODOT PK NAIL & STIMER - BRASS DISK / MOUNT BOX OF RECORD W/ PIV NOT FOUND

N = 706,374.9775 E = 1,786,778.0245

S 1/4 Post Corner 31 TR 90 - CALCULATED @ 330.00' (PER ORIG COR SURV.) DUPLICATE RECORDS FOR TR 90 S 1/4 POST CORNER 6

N = 706,402.5762 E = 1,784,440.3950

SE CORNER CORNER 31 TR 90 - CALCULATED @ 330.00' (PER ORIG COR SURV.) DUPLICATE FROM NE CORNER 6 TO SE CORNER 32

N = 706,375.8868 E = 1,787,108.0032

NEED TO RAISE MOUNT BOX @ N 1/4 Post Corner 6

NEED TO SET IRON PIV W/ MOUNT BOX @ S 1/4 Post Corner SEC 31 TR 90 RISE

① NE CORNER CORNER SEC 6 TR 90 RISE

② SE CORNER CORNER SEC 31 TR 90 RISE

* CONCRETE ROAD IS 0.60-0.65'
BELOW EXISTING SURFACE.

3 PIVS & 4 BOXES NEEDED

County Ottawa S.R. # 2

Township Carroll

Section 5

T¹/₂N, R¹/₂E

Personnel Cronin

Ripple

Geyman

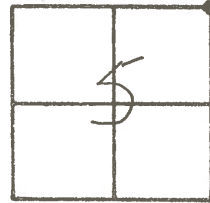
Barbour

16

Date 1/13/83

Weather overcast - windy

Temp. 27°



72.29
could not check

50.86

65.56

R.R. Tie

S.R. # 19

P.I

377+86.97

Set P.K. & washer atop

I. Pipe in Man. Box

S.S.R. # 22

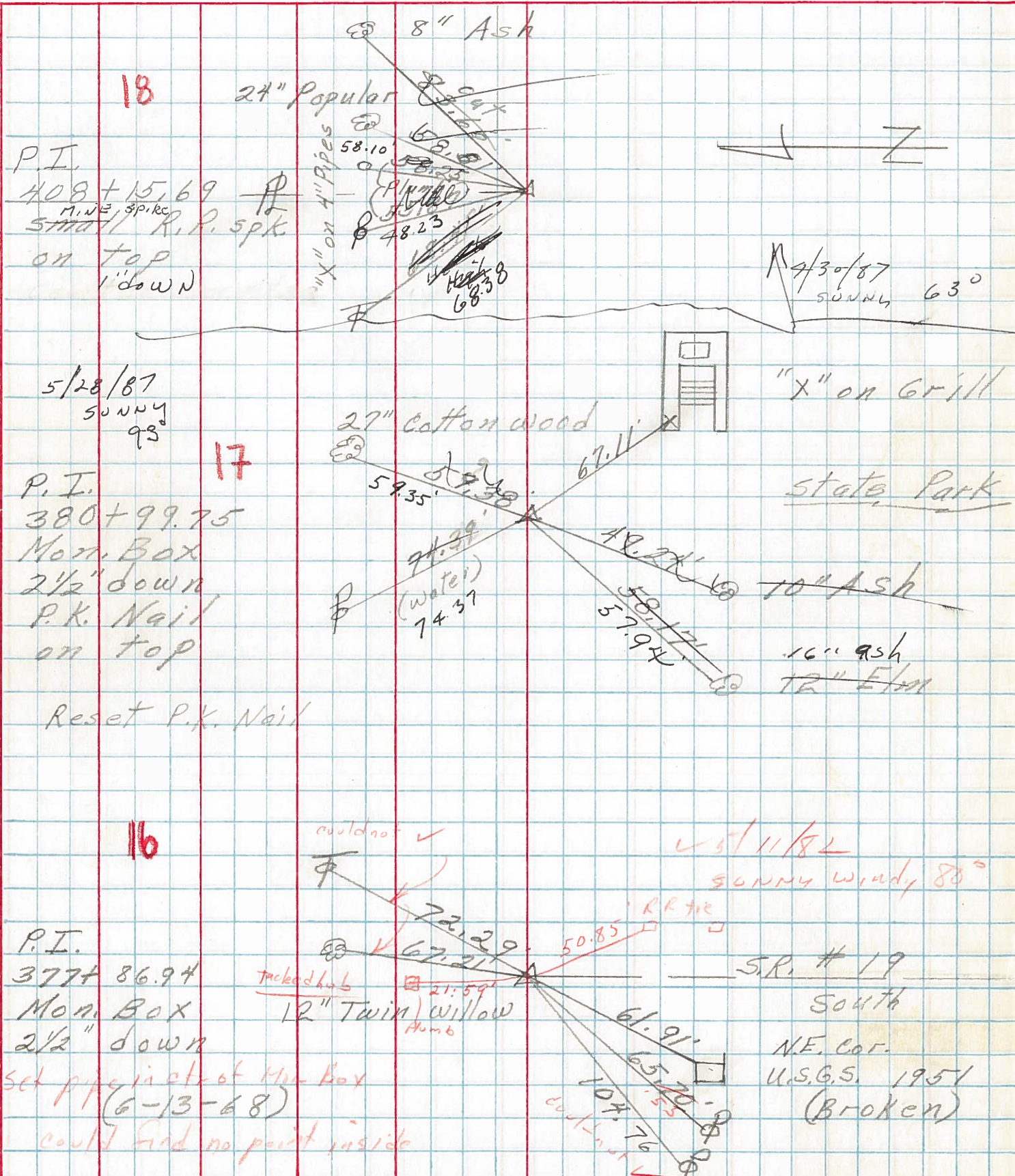
PERSONNEL	TITLE	PERSONNEL	TITLE
<u>Schneider</u>		<u>Cronin</u>	
<u>Masser</u>		<u>Ripple</u>	
<u>Barbour</u>		<u>Gelman</u>	

COUNTY Ottawa DATE 7-17-74

S. R. 2 WEATHER Fair

SEC. 4 TEMP. 85°

DESCRIPTION Benton Twp. S.R. # 19 East JOB NO. _____



PERSONNEL TITLE PERSONNEL TITLE

Schneider
 Mosser
 Barbour
 Redding

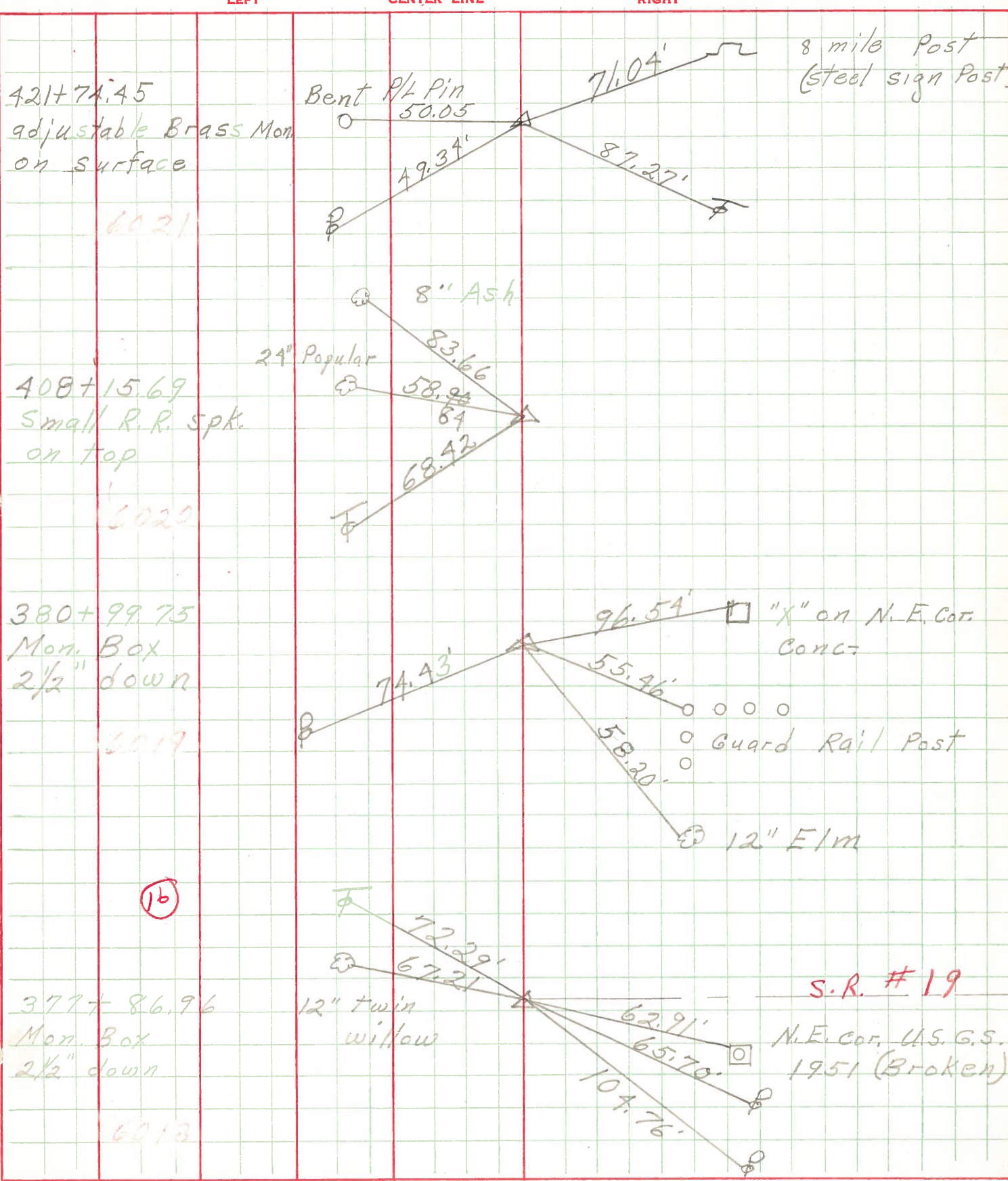
Potts

COUNTY Ottawa DATE 6-13-68

S. R. 2 WEATHER Cloudy

SEC. S.R. #19 East TEMP. 60°

DESCRIPTION Ties for Control Points JOB NO. _____



6021

6020

6019

16

6013

S.R. #19

N.E. cor. U.S. G.S. 1951 (Broken)