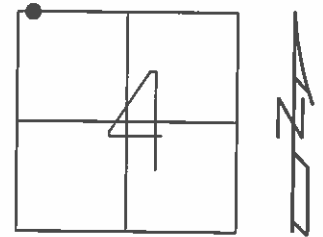


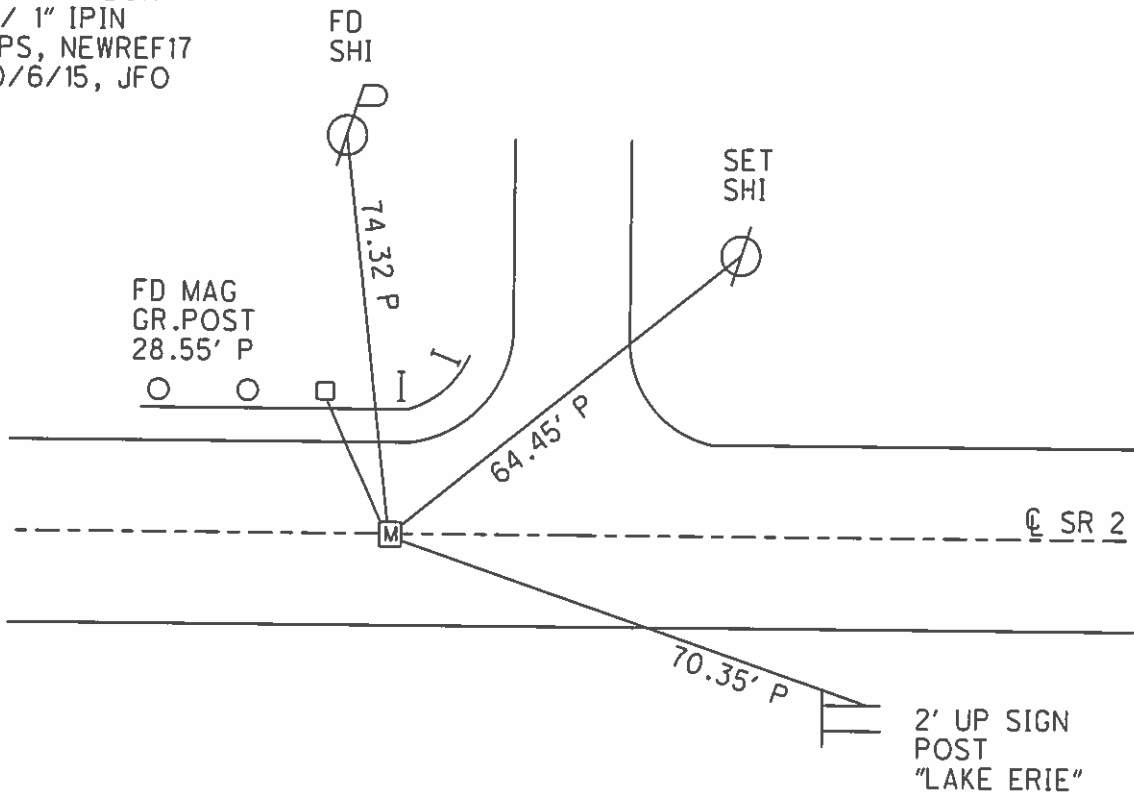
O.D.O.T. DISTRICT 2 SURVEY OFFICE (USE ONLY)

PERSONNEL	REFERENCE NO.	17	SHEET	25	OF	38
NOTES	RHOADES	DATE	5/7/13	ROUTE	SR 2	
H.C.	CODER	WEATHER	CLOUDY	COUNTY	OTTAWA	
R.C.	RHOADES	TEMP.	65°	TOWNSHIP	CARROLL	
				SECTION	4	
				T. 7 N	R. 15 E	

TYPE MONUMENT MON.BOX
 ON SURFACE - ~~BELOW~~ ON _____
 LEFT - ☉ PAV'T - RIGHT ON _____
24.5' TO RT EDGE PAVEMENT
 S.L.M. 381+05.67
 GRID: NORTHING: 706390.231 EASTING: 1792320.545



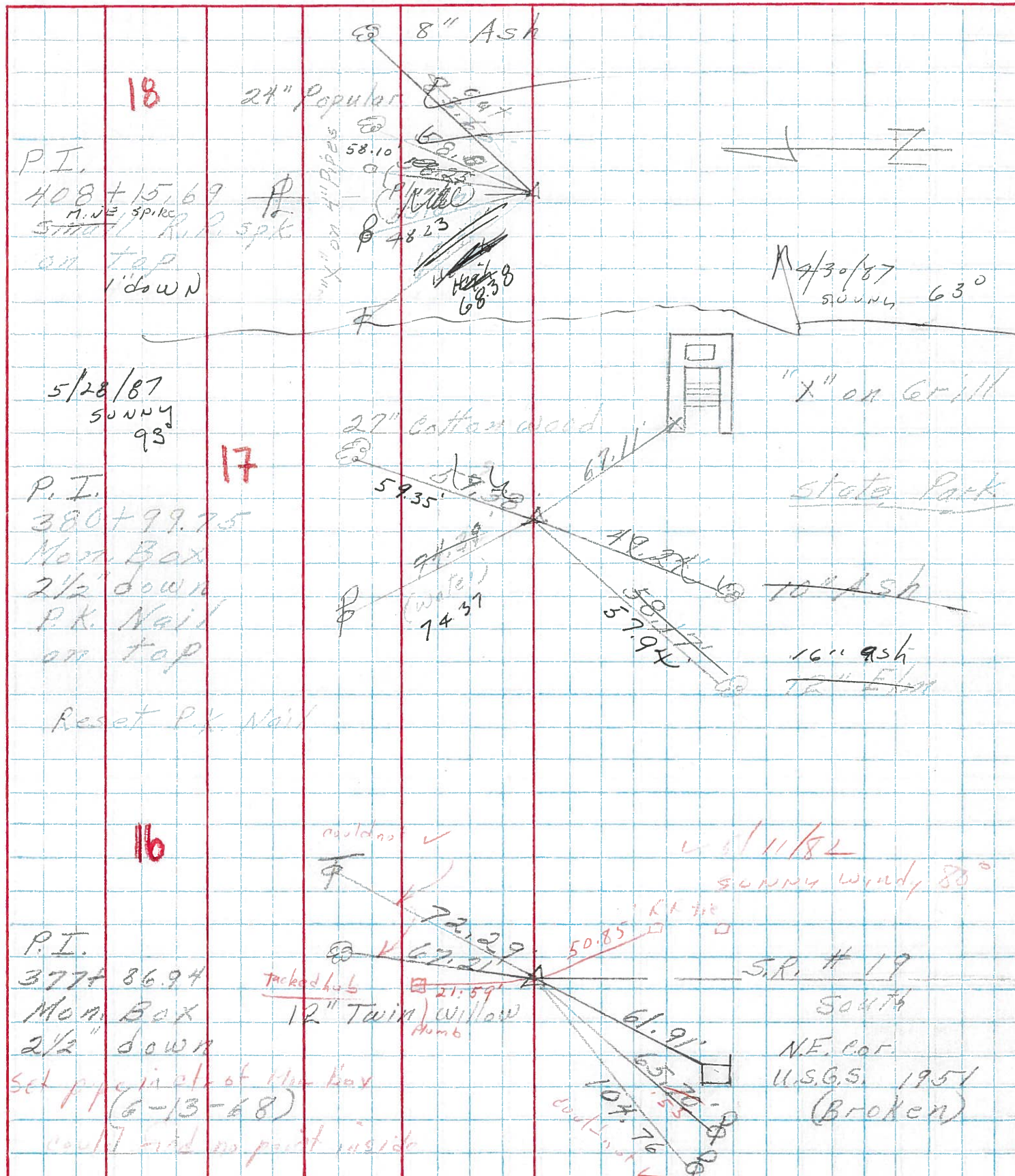
RECORD: P.I.
 FD MON.BOX
 W/ 1" IPIN
 GPS, NEWREF17
 10/6/15, JFO



PERSONNEL TITLE PERSONNEL TITLE
 Schneider Cronin
 Mosser Rippe
 Barbour Geyman

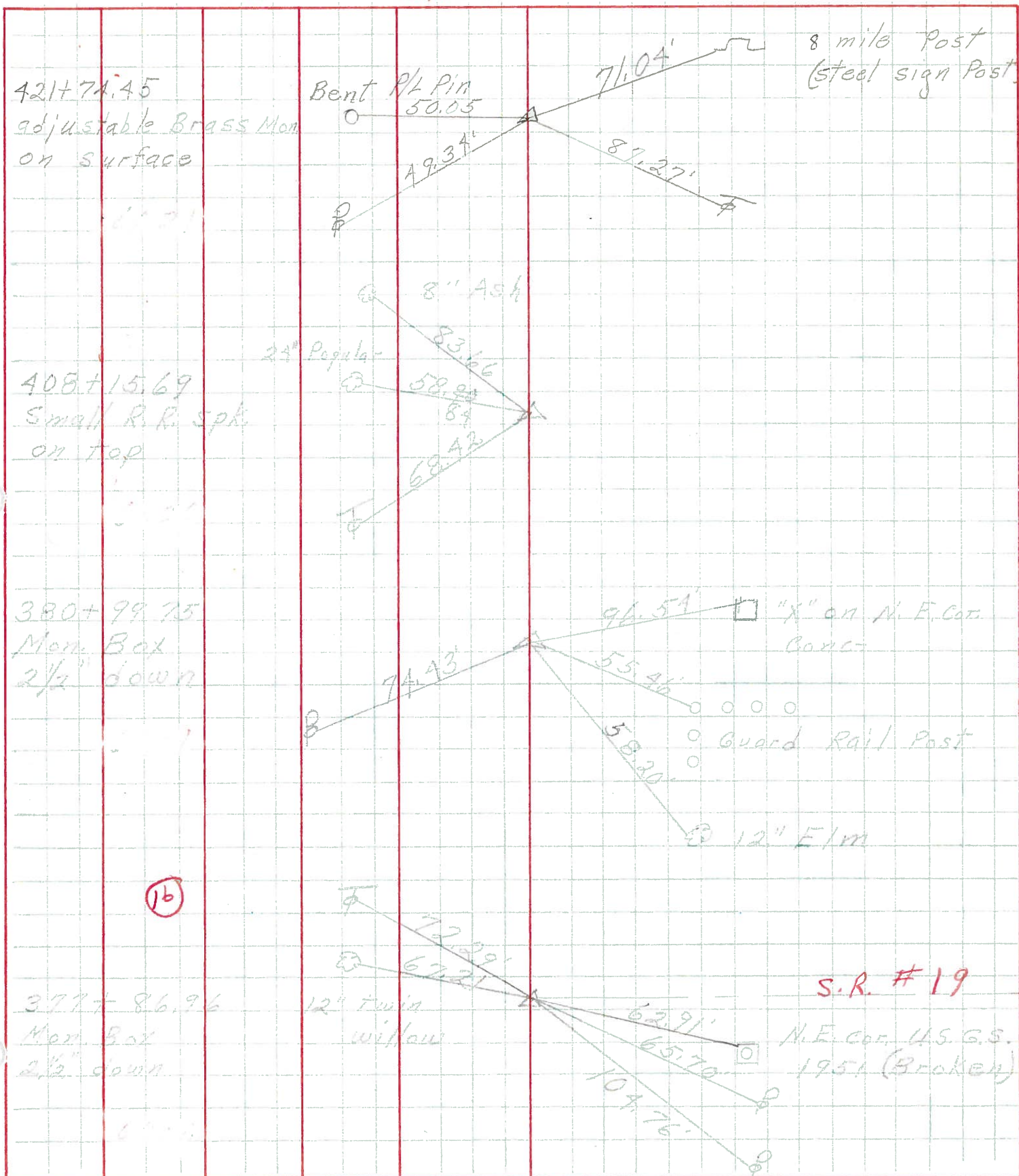
COUNTY Ottawa DATE 10-31-74
 S. R. 2 WEATHER Fair
 SEC. 4 TEMP. 85°

DESCRIPTION Benton Twp. S.R. # 19 East JOB NO.



PERSONNEL	TITLE	PERSONNEL	TITLE	COUNTY	DATE
Schneider		Potts		Ottawa	6-13-68
Mosser				S. R. <u>2</u>	WEATHER <u>Cloudy</u>
Barbour				SEC. <u>S.R. #19 East</u>	TEMP. <u>60°</u>
Redding					

DESCRIPTION Ties for Control Points JOB NO. _____



S.R. #19
N.E. cor. U.S.G.S.
1951 (Broken)